

Data Path : Z:\pestpcbsrv\HPCHEM1\ECD_L\Data\PL062421\
 Data File : PL067776.D
 Signal(s) : Signal #1: ECD1A.ch Signal #2: ECD2B.ch
 Acq On : 24 Jun 2021 13:43
 Operator : AR\AJ
 Sample : PB137313BS
 Misc :
 ALS Vial : 7 Sample Multiplier: 1

Instrument :
 ECD_L
 ClientSampleId :

Integration File signal 1: autoint1.e
 Integration File signal 2: autoint2.e
 Quant Time: Jun 25 01:20:47 2021
 Quant Method : Z:\pestpcbsrv\HPCHEM1\ECD_L\methods\PL061021.M
 Quant Title : GC Extractables
 QLast Update : Fri Jun 11 02:00:12 2021
 Response via : Initial Calibration
 Integrator: ChemStation

Volume Inj. : 1 µl
 Signal #1 Phase : ZB-MR2 Signal #2 Phase: ZB-MR1
 Signal #1 Info : 30M x 0.32mm x0.2 Signal #2 Info : 30M x 0.32mm x0.5µm

Compound	RT#1	RT#2	Resp#1	Resp#2	ng/ml	ng/ml
System Monitoring Compounds						
1) SA Tetrachlo...	4.485	5.525	9629380	16411153	17.515	17.408
28) SA Decachlor...	10.223	11.426	13744052	19025608	19.394	19.101
Target Compounds						
2) A alpha-BHC	5.184	6.106	37222135	60369195	50.608	48.824
3) MA gamma-BHC...	5.603	6.502	35321354	57643186	47.131	48.893
4) MA Heptachlor	6.014	7.149	35388701	53356716	46.916	47.844
5) MB Aldrin	6.335	7.520	34015030	49130389	46.229	45.392
6) B beta-BHC	5.987	6.757	16563609	27099947	46.292	49.907
7) B delta-BHC	6.243	7.023	35835751	56188889	48.520	47.799
8) B Heptachlo...	6.909	7.986	32867559	46340577	46.976	46.259
9) A Endosulfan I	7.308	8.391	31571320	42486296	46.962	46.528
10) B gamma-Chl...	7.187	8.256	34086419	46761592	47.015	46.314
11) B alpha-Chl...	7.255	8.337	34052198	46043434	46.512	45.605
12) B 4,4'-DDE	7.474	8.526	31538236	43726949	47.404	48.267
13) MA Dieldrin	7.592	8.680	33605374	43680100	47.939	48.094
14) MA Endrin	7.879	8.919	30505355	35778343	46.527	46.775
15) B Endosulfa...	8.189	9.154	29758462	40137401	48.319	50.342
16) A 4,4'-DDD	8.055	9.065	27160780	34871569	46.726	49.032
17) MA 4,4'-DDT	8.314	9.382	27149295	33027721	46.658	45.049
18) B Endrin al...	8.376	9.289	26258104	33729821	51.865	52.816
19) B Endosulfa...	8.608	9.526	31097769	39105256	48.988	49.240
20) A Methoxychlor	8.907	9.868	16358997	18251228	46.021	46.942
21) B Endrin ke...	9.117	10.024	37153709	44541193	48.799	49.142
22) Mirex	9.304	10.488	29910849	36516006	47.494	48.302
24) Chlordane-2	0.000	7.520f	0	49130389	N.D.	1348.026 #
25) Chlordane-3	7.187	8.256	34086419	46761592	507.309	349.390 #
26) Chlordane-4	7.255	8.337	34052198	46043434	465.966	284.043 #
27) Chlordane-5	8.189	0.000	29758462	0	1360.133	N.D. #

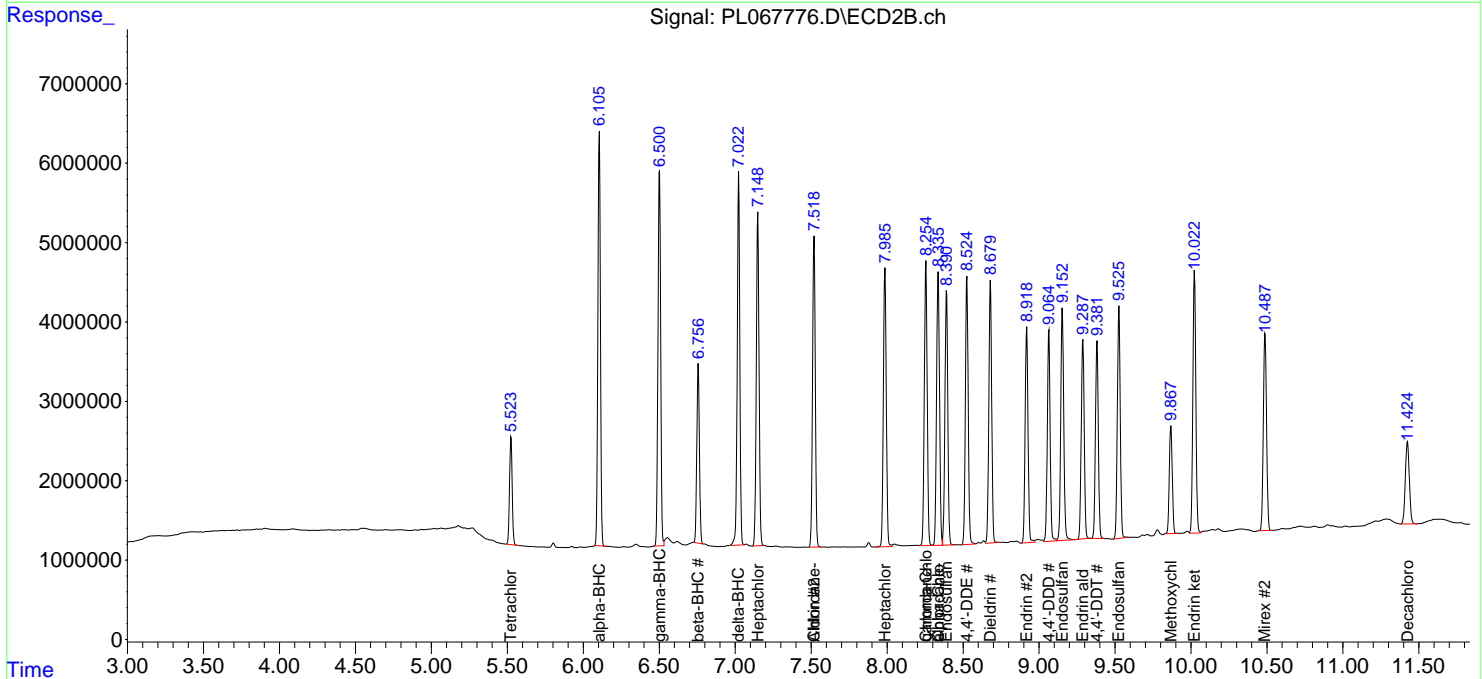
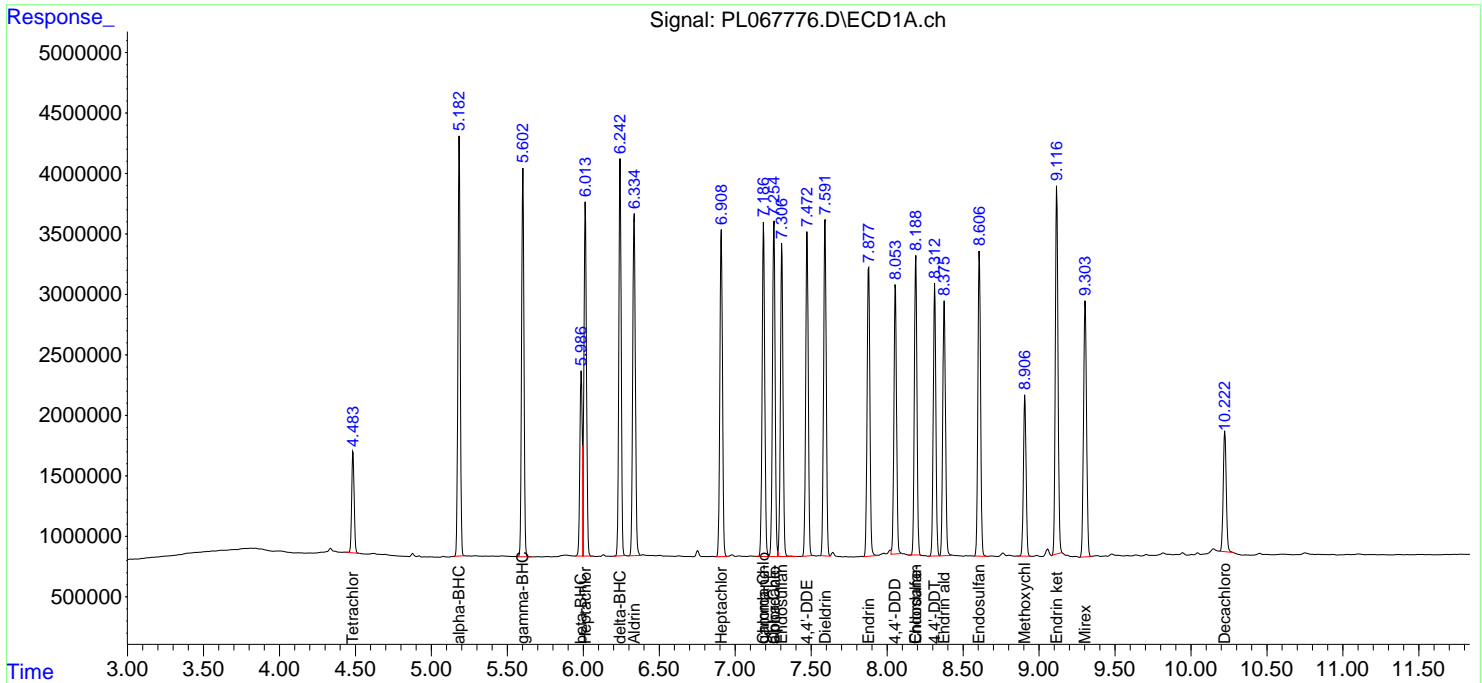
(f)=RT Delta > 1/2 Window (#)=Amounts differ by > 25% (m)=manual int.

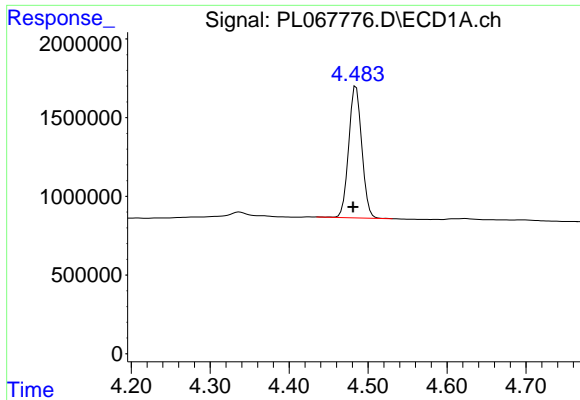
Data Path : Z:\pestpcbsrv\HPCHEM1\ECD_L\Data\PL062421\
 Data File : PL067776.D
 Signal(s) : Signal #1: ECD1A.ch Signal #2: ECD2B.ch
 Acq On : 24 Jun 2021 13:43
 Operator : AR\AJ
 Sample : PB137313BS
 Misc :
 ALS Vial : 7 Sample Multiplier: 1

Instrument :
 ECD_L
 ClientSampled :

Integration File signal 1: autoint1.e
 Integration File signal 2: autoint2.e
 Quant Time: Jun 25 01:20:47 2021
 Quant Method : Z:\pestpcbsrv\HPCHEM1\ECD_L\methods\PL061021.M
 Quant Title : GC Extractables
 QLast Update : Fri Jun 11 02:00:12 2021
 Response via : Initial Calibration
 Integrator: ChemStation

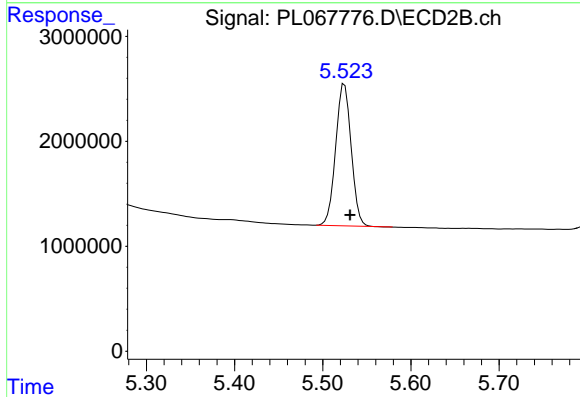
Volume Inj. : 1 µl
 Signal #1 Phase : ZB-MR2 Signal #2 Phase: ZB-MR1
 Signal #1 Info : 30M x 0.32mm x0.2 Signal #2 Info : 30M x 0.32mm x0.5µm



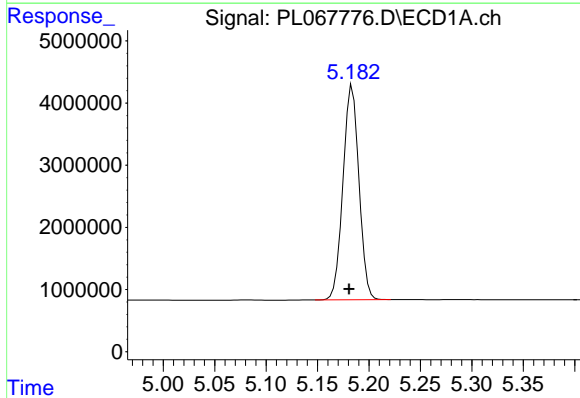


#1 Tetrachloro-m-xylene
 R.T.: 4.485 min
 Delta R.T.: 0.004 min
 Response: 9629380
 Conc: 17.51 ng/ml

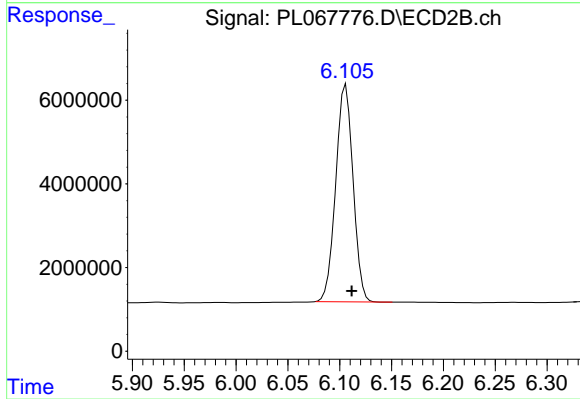
Instrument :
 ECD_L
 ClientSampled :



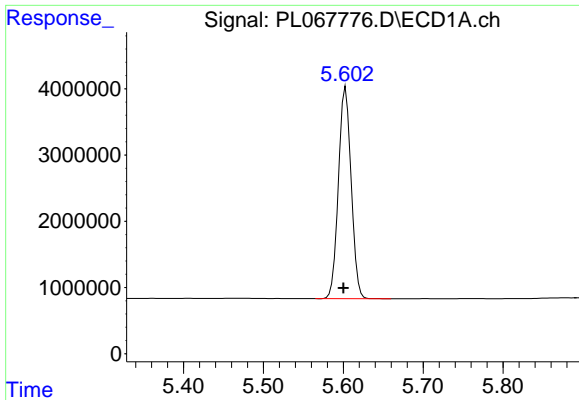
#1 Tetrachloro-m-xylene
 R.T.: 5.525 min
 Delta R.T.: -0.006 min
 Response: 16411153
 Conc: 17.41 ng/ml



#2 alpha-BHC
 R.T.: 5.184 min
 Delta R.T.: 0.003 min
 Response: 37222135
 Conc: 50.61 ng/ml

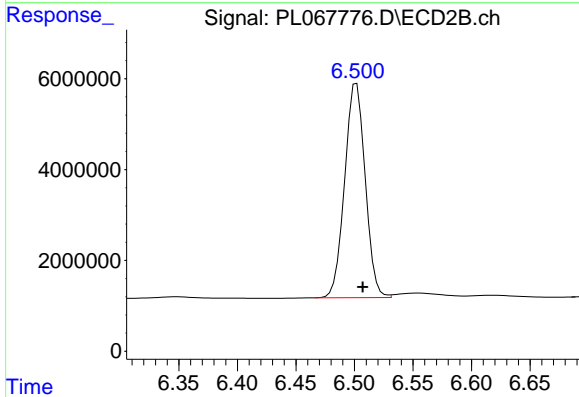


#2 alpha-BHC
 R.T.: 6.106 min
 Delta R.T.: -0.006 min
 Response: 60369195
 Conc: 48.82 ng/ml

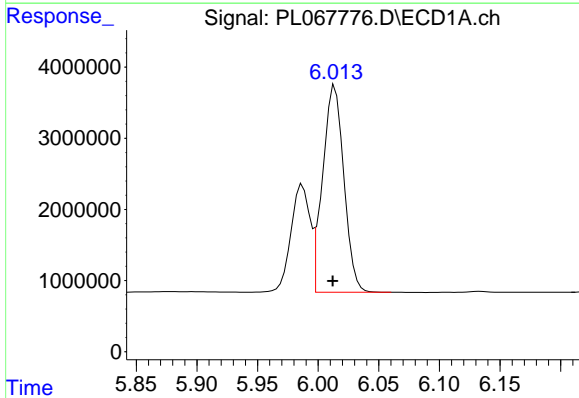


#3 gamma-BHC (Lindane)
 R.T.: 5.603 min
 Delta R.T.: 0.003 min
 Response: 35321354
 Conc: 47.13 ng/ml

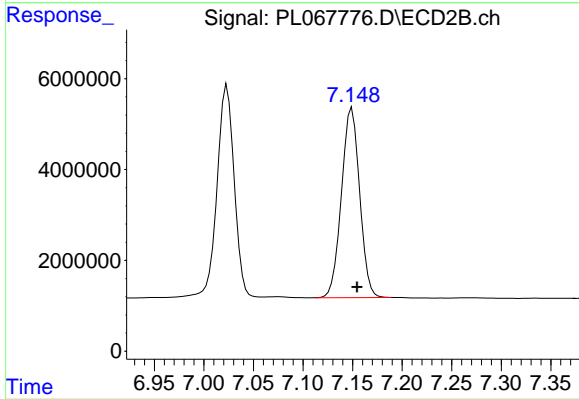
Instrument :
 ECD_L
 ClientSampleId :



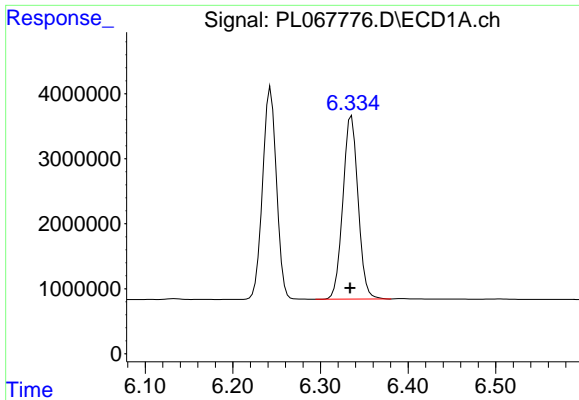
#3 gamma-BHC (Lindane)
 R.T.: 6.502 min
 Delta R.T.: -0.005 min
 Response: 57643186
 Conc: 48.89 ng/ml



#4 Heptachlor
 R.T.: 6.014 min
 Delta R.T.: 0.002 min
 Response: 35388701
 Conc: 46.92 ng/ml

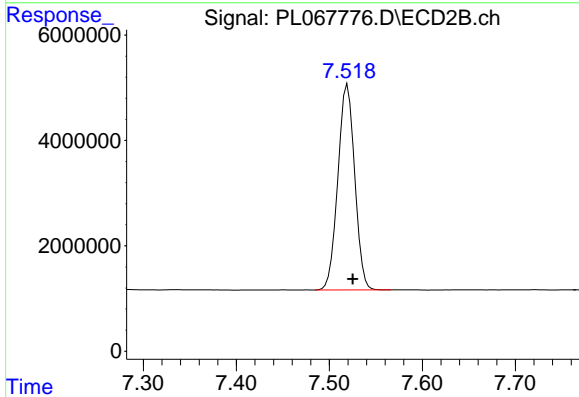


#4 Heptachlor
 R.T.: 7.149 min
 Delta R.T.: -0.005 min
 Response: 53356716
 Conc: 47.84 ng/ml

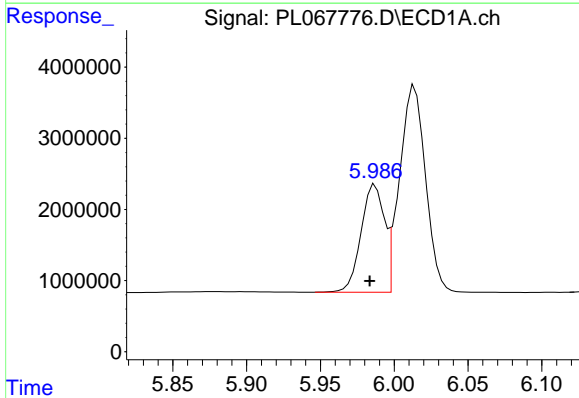


#5 Aldrin
 R.T.: 6.335 min
 Delta R.T.: 0.002 min
 Response: 34015030
 Conc: 46.23 ng/ml

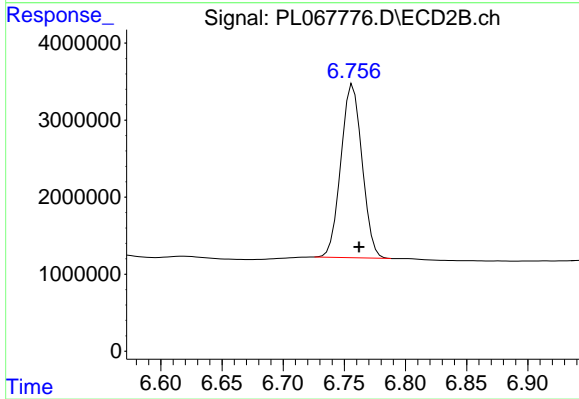
Instrument :
 ECD_L
 ClientSampled :



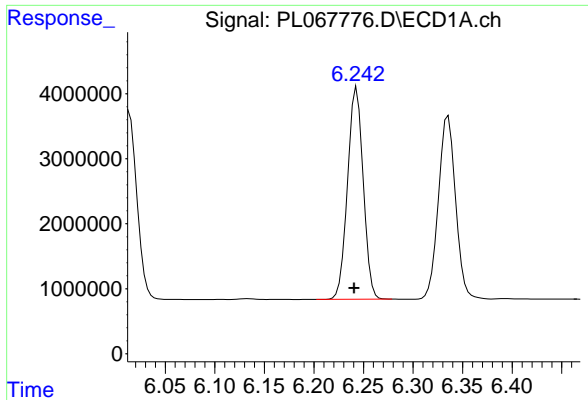
#5 Aldrin
 R.T.: 7.520 min
 Delta R.T.: -0.006 min
 Response: 49130389
 Conc: 45.39 ng/ml



#6 beta-BHC
 R.T.: 5.987 min
 Delta R.T.: 0.004 min
 Response: 16563609
 Conc: 46.29 ng/ml

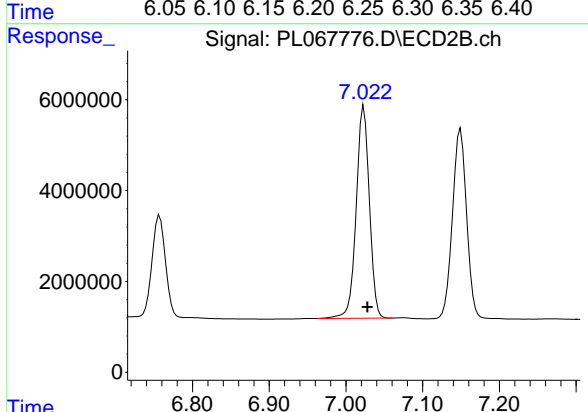


#6 beta-BHC
 R.T.: 6.757 min
 Delta R.T.: -0.005 min
 Response: 27099947
 Conc: 49.91 ng/ml

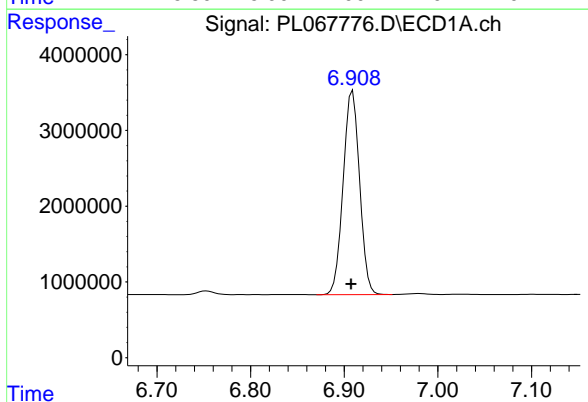


#7 delta-BHC
 R.T.: 6.243 min
 Delta R.T.: 0.003 min
 Response: 35835751
 Conc: 48.52 ng/ml

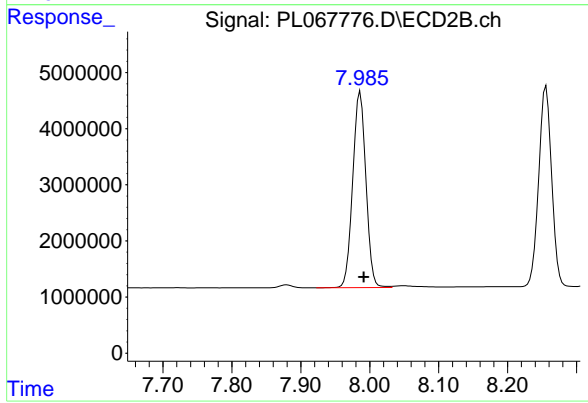
Instrument :
 ECD_L
 ClientSampled :



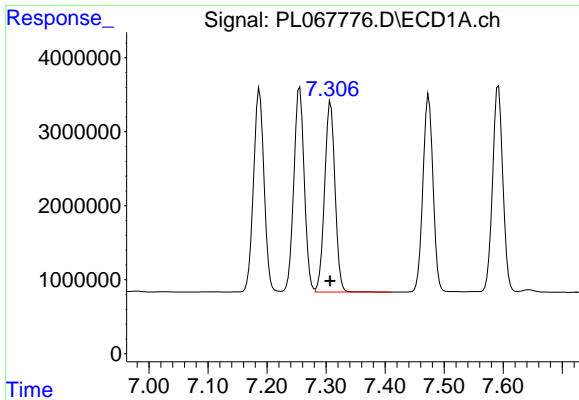
#7 delta-BHC
 R.T.: 7.023 min
 Delta R.T.: -0.005 min
 Response: 56188889
 Conc: 47.80 ng/ml



#8 Heptachlor epoxide
 R.T.: 6.909 min
 Delta R.T.: 0.002 min
 Response: 32867559
 Conc: 46.98 ng/ml

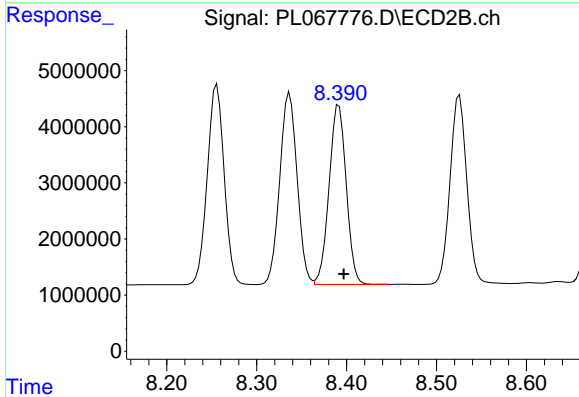


#8 Heptachlor epoxide
 R.T.: 7.986 min
 Delta R.T.: -0.005 min
 Response: 46340577
 Conc: 46.26 ng/ml

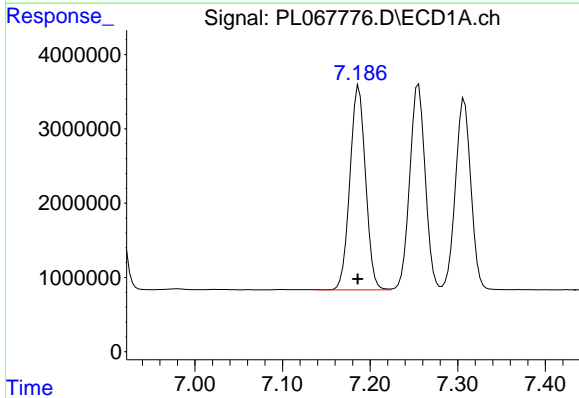


#9 Endosulfan I
 R.T.: 7.308 min
 Delta R.T.: 0.000 min
 Response: 31571320
 Conc: 46.96 ng/ml

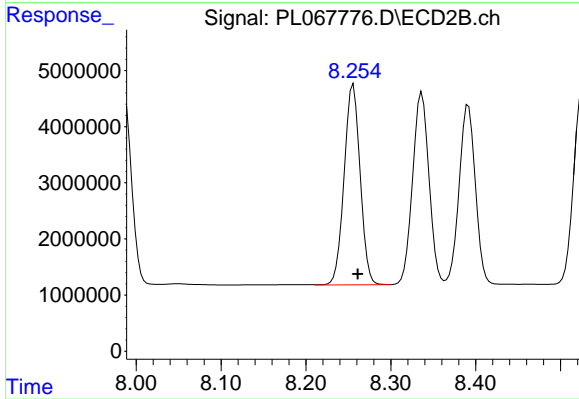
Instrument :
 ECD_L
 ClientSampled :



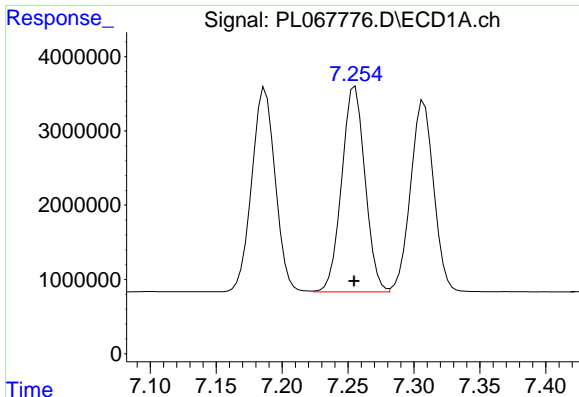
#9 Endosulfan I
 R.T.: 8.391 min
 Delta R.T.: -0.005 min
 Response: 42486296
 Conc: 46.53 ng/ml



#10 gamma-Chlordane
 R.T.: 7.187 min
 Delta R.T.: 0.002 min
 Response: 34086419
 Conc: 47.02 ng/ml



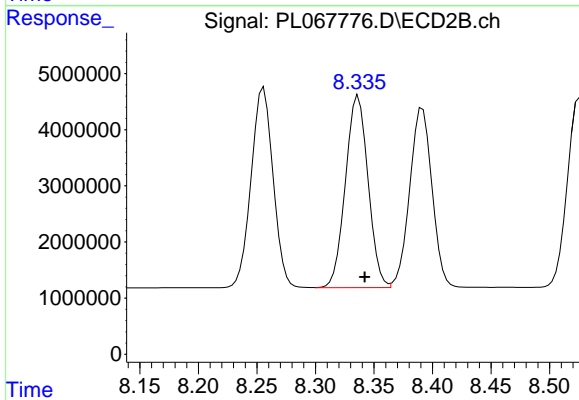
#10 gamma-Chlordane
 R.T.: 8.256 min
 Delta R.T.: -0.005 min
 Response: 46761592
 Conc: 46.31 ng/ml



#11 alpha-Chlordane

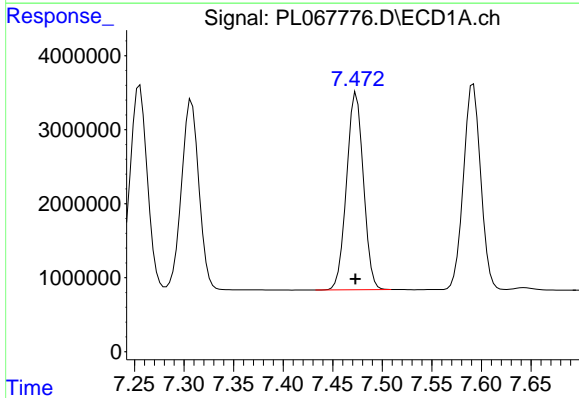
R.T.: 7.255 min
Delta R.T.: 0.000 min
Response: 34052198
Conc: 46.51 ng/ml

Instrument :
ECD_L
ClientSampled :



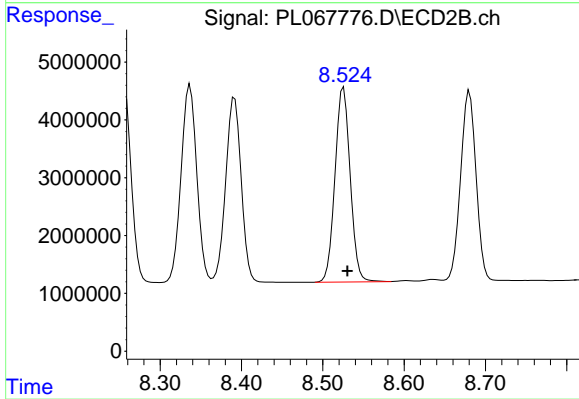
#11 alpha-Chlordane

R.T.: 8.337 min
Delta R.T.: -0.005 min
Response: 46043434
Conc: 45.60 ng/ml



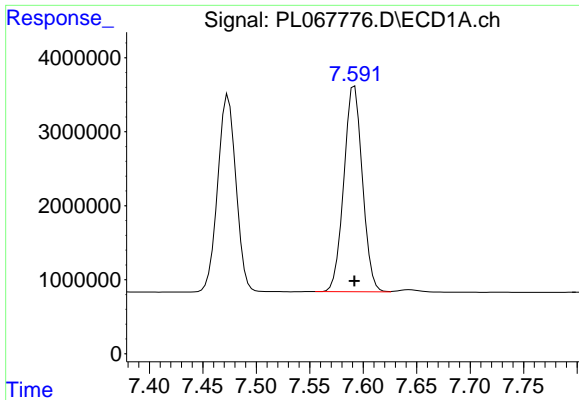
#12 4,4'-DDE

R.T.: 7.474 min
Delta R.T.: 0.000 min
Response: 31538236
Conc: 47.40 ng/ml



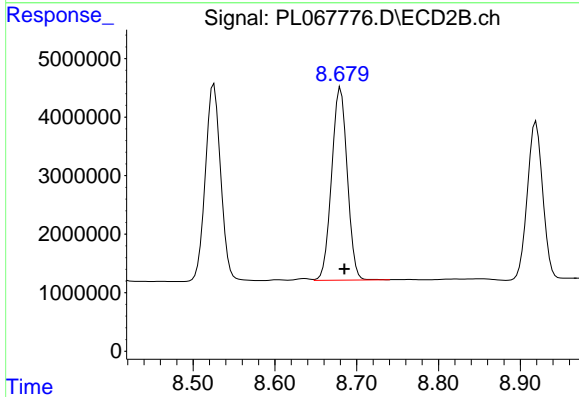
#12 4,4'-DDE

R.T.: 8.526 min
Delta R.T.: -0.005 min
Response: 43726949
Conc: 48.27 ng/ml

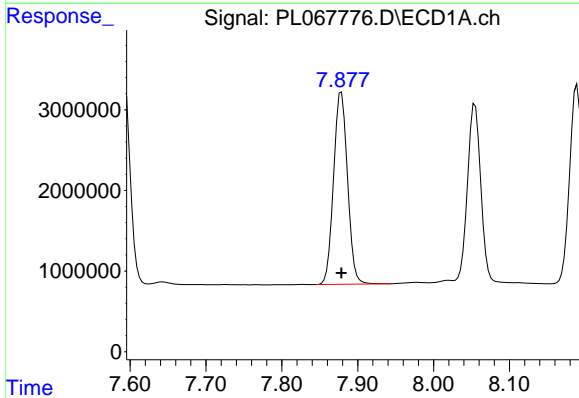


#13 Dieldrin
 R.T.: 7.592 min
 Delta R.T.: 0.000 min
 Response: 33605374
 Conc: 47.94 ng/ml

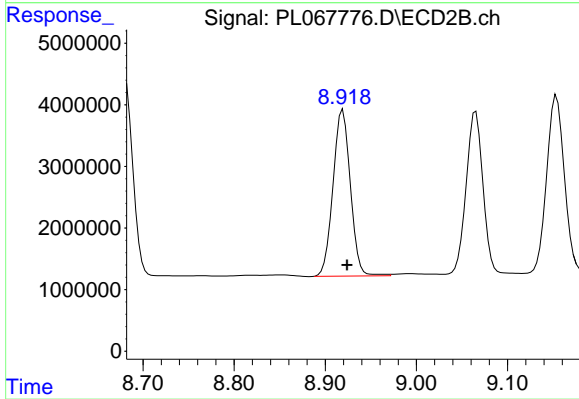
Instrument :
 ECD_L
 ClientSampled :



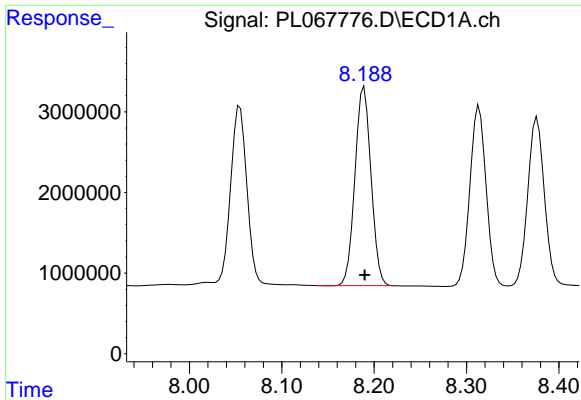
#13 Dieldrin
 R.T.: 8.680 min
 Delta R.T.: -0.005 min
 Response: 43680100
 Conc: 48.09 ng/ml



#14 Endrin
 R.T.: 7.879 min
 Delta R.T.: 0.000 min
 Response: 30505355
 Conc: 46.53 ng/ml



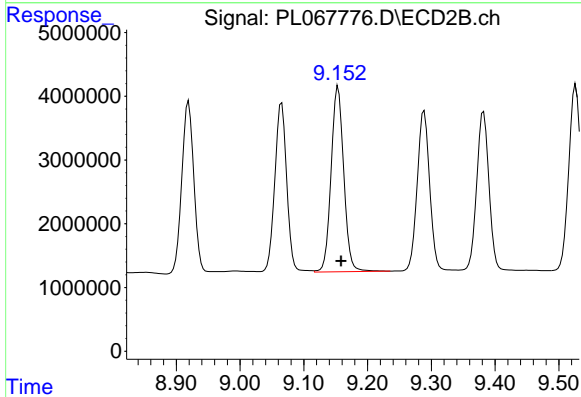
#14 Endrin
 R.T.: 8.919 min
 Delta R.T.: -0.005 min
 Response: 35778343
 Conc: 46.78 ng/ml



#15 Endosulfan II

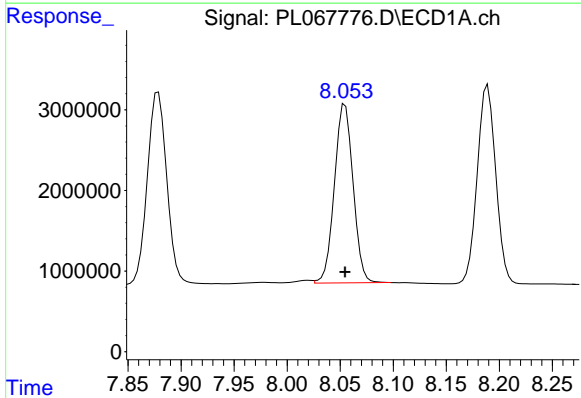
R.T.: 8.189 min
 Delta R.T.: 0.000 min
 Response: 29758462
 Conc: 48.32 ng/ml

Instrument :
 ECD_L
 ClientSampled :



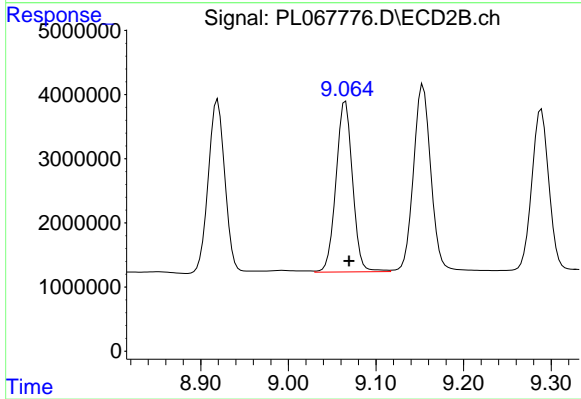
#15 Endosulfan II

R.T.: 9.154 min
 Delta R.T.: -0.005 min
 Response: 40137401
 Conc: 50.34 ng/ml



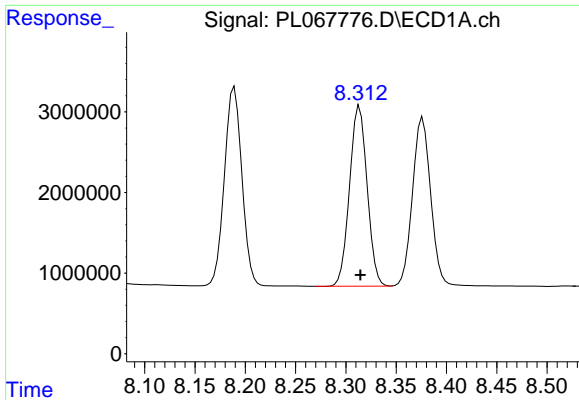
#16 4,4'-DDD

R.T.: 8.055 min
 Delta R.T.: 0.000 min
 Response: 27160780
 Conc: 46.73 ng/ml



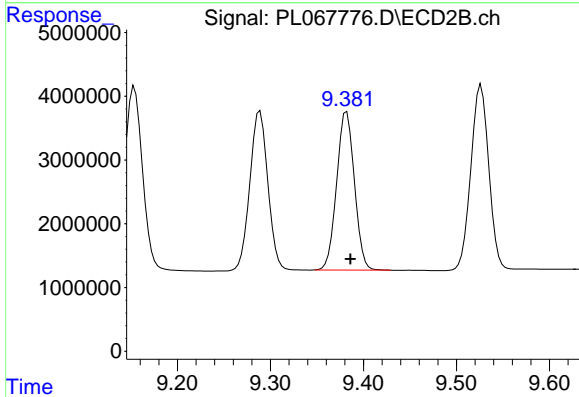
#16 4,4'-DDD

R.T.: 9.065 min
 Delta R.T.: -0.004 min
 Response: 34871569
 Conc: 49.03 ng/ml

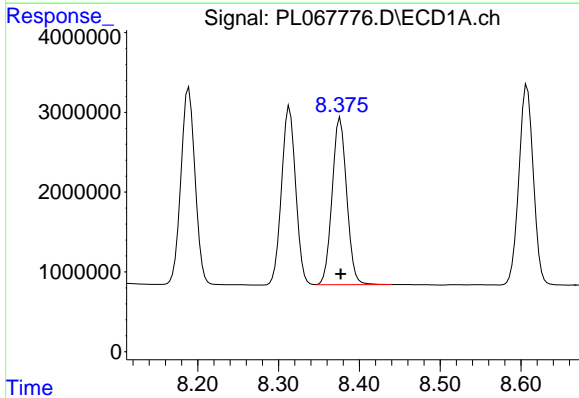


#17 4,4'-DDT
R.T.: 8.314 min
Delta R.T.: 0.000 min
Response: 27149295
Conc: 46.66 ng/ml

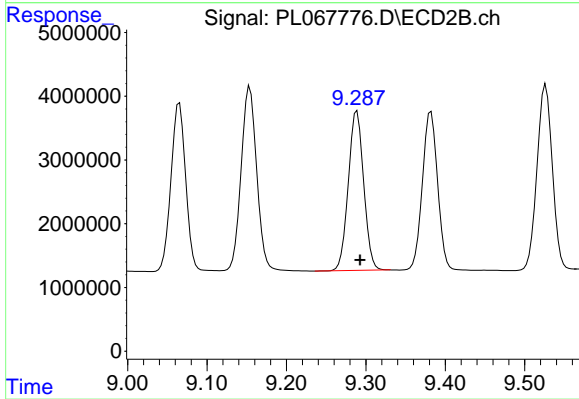
Instrument :
ECD_L
ClientSampled :



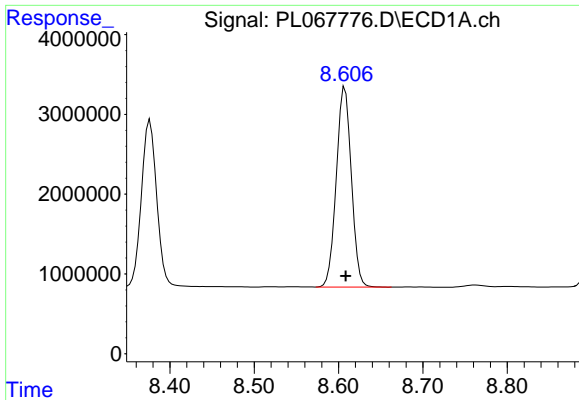
#17 4,4'-DDT
R.T.: 9.382 min
Delta R.T.: -0.004 min
Response: 33027721
Conc: 45.05 ng/ml



#18 Endrin aldehyde
R.T.: 8.376 min
Delta R.T.: 0.000 min
Response: 26258104
Conc: 51.87 ng/ml

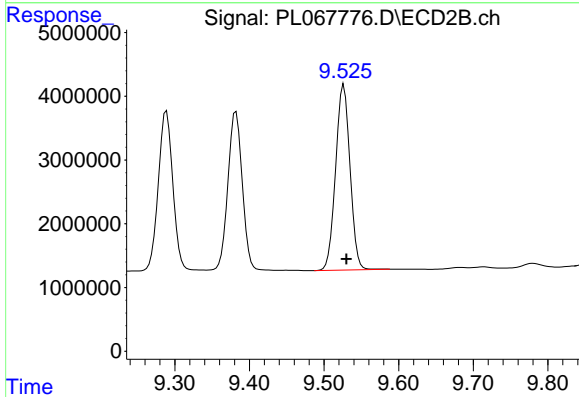


#18 Endrin aldehyde
R.T.: 9.289 min
Delta R.T.: -0.004 min
Response: 33729821
Conc: 52.82 ng/ml

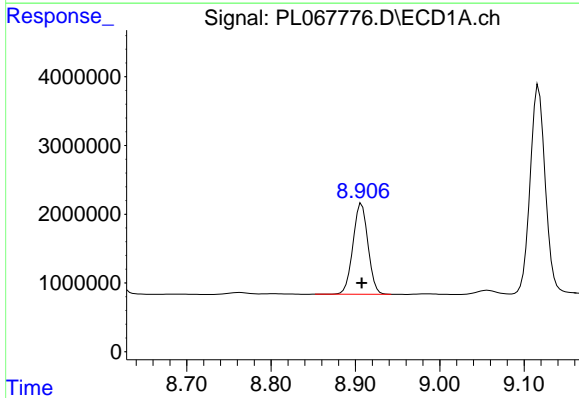


#19 Endosulfan Sulfate
 R.T.: 8.608 min
 Delta R.T.: 0.000 min
 Response: 31097769
 Conc: 48.99 ng/ml

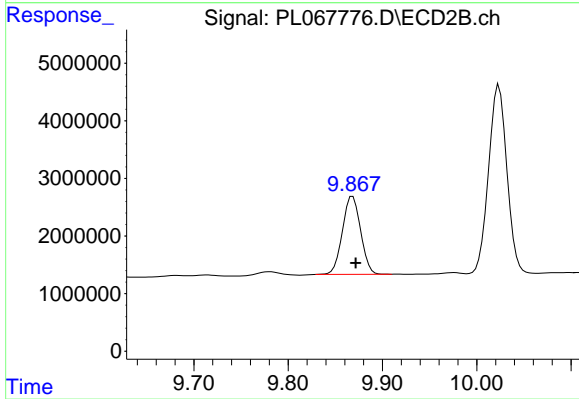
Instrument :
 ECD_L
 ClientSampled :



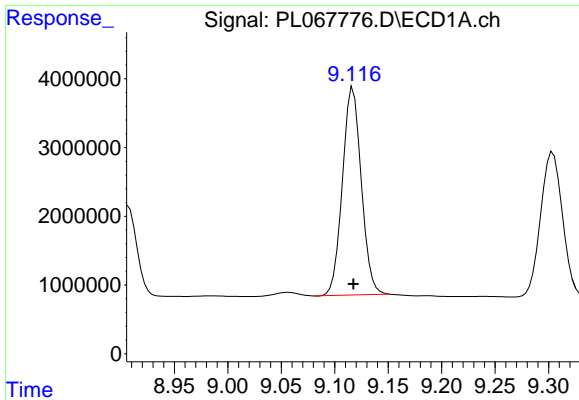
#19 Endosulfan Sulfate
 R.T.: 9.526 min
 Delta R.T.: -0.004 min
 Response: 39105256
 Conc: 49.24 ng/ml



#20 Methoxychlor
 R.T.: 8.907 min
 Delta R.T.: 0.000 min
 Response: 16358997
 Conc: 46.02 ng/ml

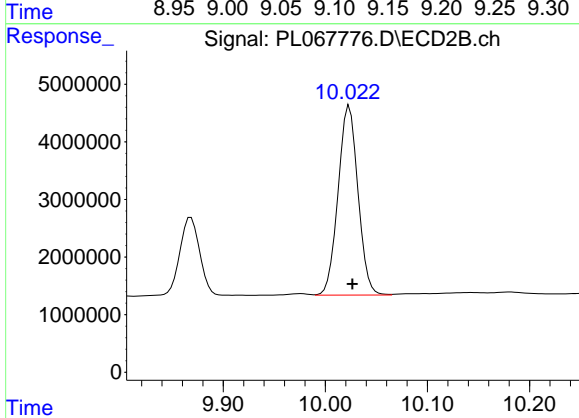


#20 Methoxychlor
 R.T.: 9.868 min
 Delta R.T.: -0.003 min
 Response: 18251228
 Conc: 46.94 ng/ml

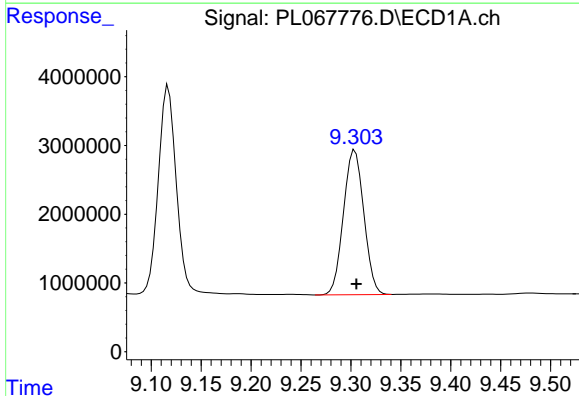


#21 Endrin ketone
 R.T.: 9.117 min
 Delta R.T.: 0.000 min
 Response: 37153709
 Conc: 48.80 ng/ml

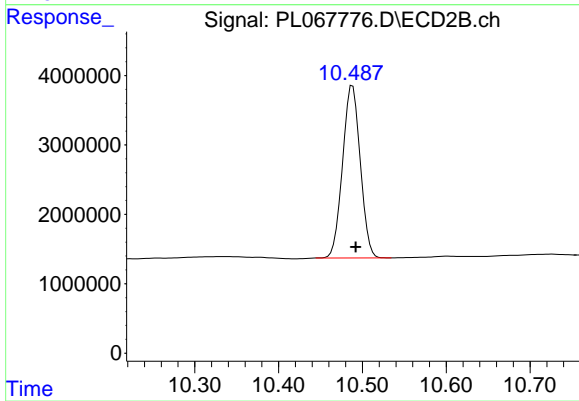
Instrument :
 ECD_L
 ClientSampled :



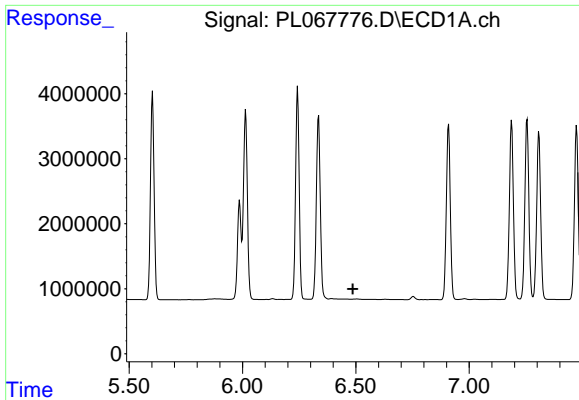
#21 Endrin ketone
 R.T.: 10.024 min
 Delta R.T.: -0.003 min
 Response: 44541193
 Conc: 49.14 ng/ml



#22 Mirex
 R.T.: 9.304 min
 Delta R.T.: -0.001 min
 Response: 29910849
 Conc: 47.49 ng/ml



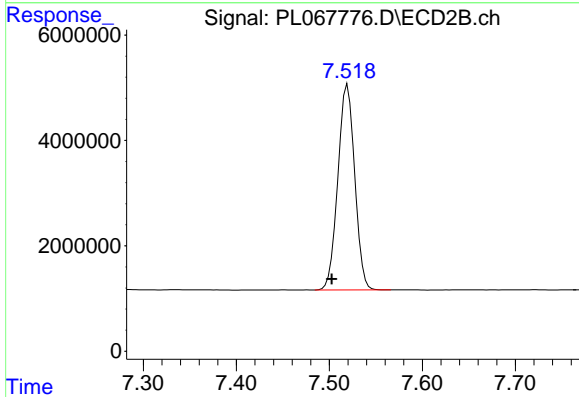
#22 Mirex
 R.T.: 10.488 min
 Delta R.T.: -0.004 min
 Response: 36516006
 Conc: 48.30 ng/ml



#24 Chlordane-2

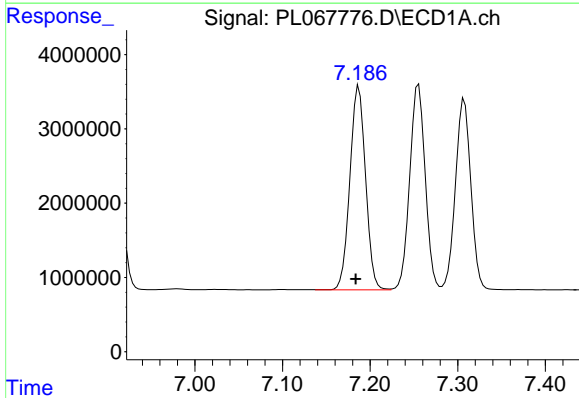
R.T.: 0.000 min
 Exp R.T.: 6.486 min
 Response: 0
 Conc: N.D.

Instrument :
 ECD_L
 ClientSampled :



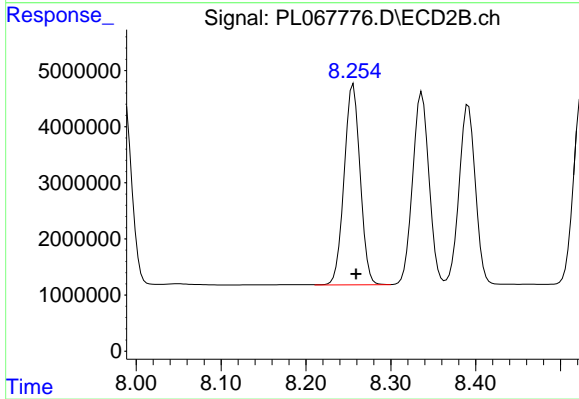
#24 Chlordane-2

R.T.: 7.520 min
 Delta R.T.: 0.017 min
 Response: 49130389
 Conc: 1348.03 ng/ml



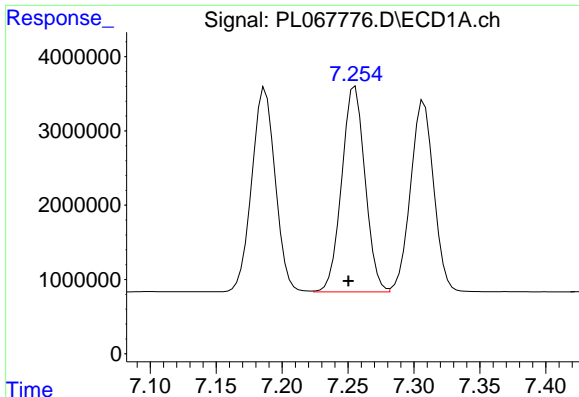
#25 Chlordane-3

R.T.: 7.187 min
 Delta R.T.: 0.004 min
 Response: 34086419
 Conc: 507.31 ng/ml



#25 Chlordane-3

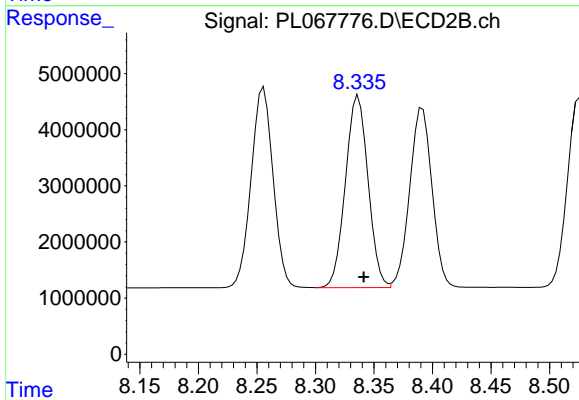
R.T.: 8.256 min
 Delta R.T.: -0.004 min
 Response: 46761592
 Conc: 349.39 ng/ml



#26 Chlordane-4

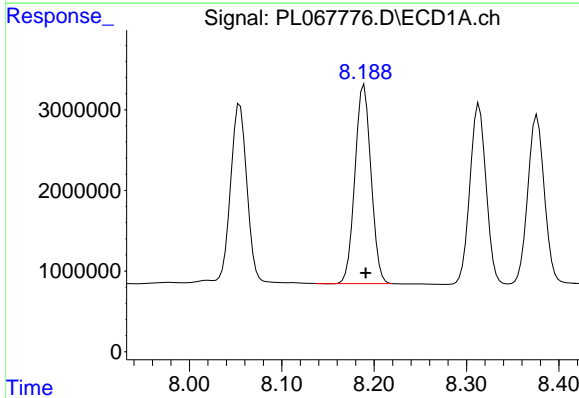
R.T.: 7.255 min
 Delta R.T.: 0.005 min
 Response: 34052198
 Conc: 465.97 ng/ml

Instrument :
 ECD_L
 ClientSampleId :



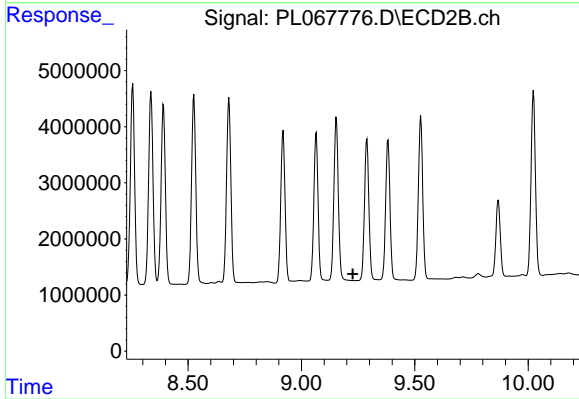
#26 Chlordane-4

R.T.: 8.337 min
 Delta R.T.: -0.005 min
 Response: 46043434
 Conc: 284.04 ng/ml



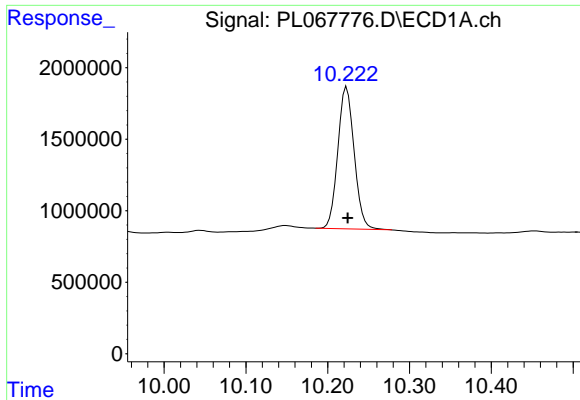
#27 Chlordane-5

R.T.: 8.189 min
 Delta R.T.: -0.002 min
 Response: 29758462
 Conc: 1360.13 ng/ml



#27 Chlordane-5

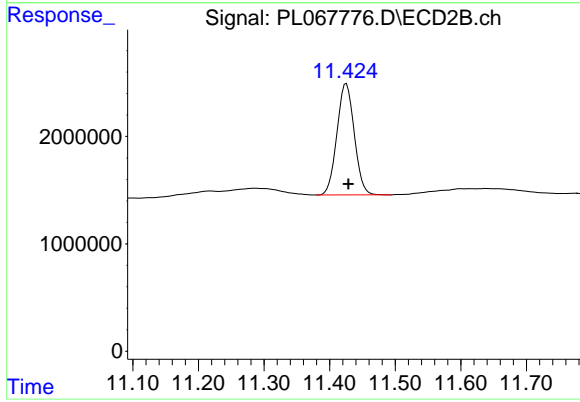
R.T.: 0.000 min
 Exp R.T. : 9.227 min
 Response: 0
 Conc: N.D.



#28 Decachlorobiphenyl

R.T.: 10.223 min
Delta R.T.: -0.001 min
Response: 13744052
Conc: 19.39 ng/ml

Instrument :
ECD_L
ClientSampleId :



#28 Decachlorobiphenyl

R.T.: 11.426 min
Delta R.T.: -0.003 min
Response: 19025608
Conc: 19.10 ng/ml