

Data Path : Z:\pestpcbsrv\HPCHEM1\ECD_L\Data\PL062421\
 Data File : PL067777.D
 Signal(s) : Signal #1: ECD1A.ch Signal #2: ECD2B.ch
 Acq On : 24 Jun 2021 14:39
 Operator : AR\AJ
 Sample : PB137313BL
 Misc :
 ALS Vial : 8 Sample Multiplier: 1

Instrument :
 ECD_L
 ClientSampleId :

Integration File signal 1: autoint1.e
 Integration File signal 2: autoint2.e
 Quant Time: Jun 25 01:21:11 2021
 Quant Method : Z:\pestpcbsrv\HPCHEM1\ECD_L\methods\PL061021.M
 Quant Title : GC Extractables
 QLast Update : Fri Jun 11 02:00:12 2021
 Response via : Initial Calibration
 Integrator: ChemStation

Volume Inj. : 1 µl
 Signal #1 Phase : ZB-MR2 Signal #2 Phase: ZB-MR1
 Signal #1 Info : 30M x 0.32mm x0.2 Signal #2 Info : 30M x 0.32mm x0.5µm

	Compound	RT#1	RT#2	Resp#1	Resp#2	ng/ml	ng/ml

System Monitoring Compounds							
1)	SA Tetrachlo...	4.480	5.525	10344532	18429254	18.816	19.549
28)	SA Decachlor...	10.218	11.421	14370277	20622547	20.277	20.704
Target Compounds							
10)	B gamma-Chl...	0.000	8.259	0	273997	N.D.	0.271 #
14)	MA Endrin	7.895f	0.000	233198	0	0.356	N.D. #
15)	B Endosulfa...	0.000	9.175f	0	356466	N.D.	0.447 #
16)	A 4,4'-DDD	8.029f	0.000	258062	0	0.444	N.D. #
23)	Chlordane-1	0.000	6.938f	0	305572	N.D.	10.821 #
25)	Chlordane-3	0.000	8.259	0	273997	N.D.	2.047 #

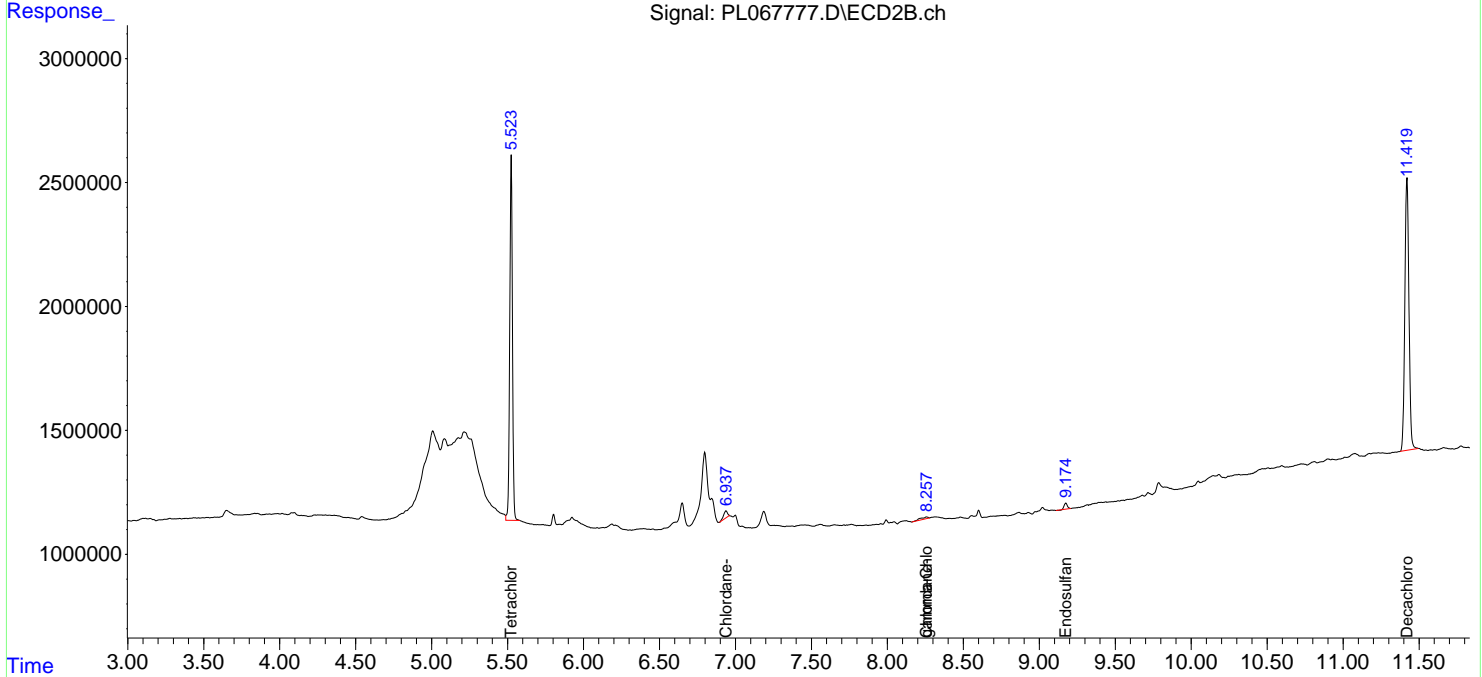
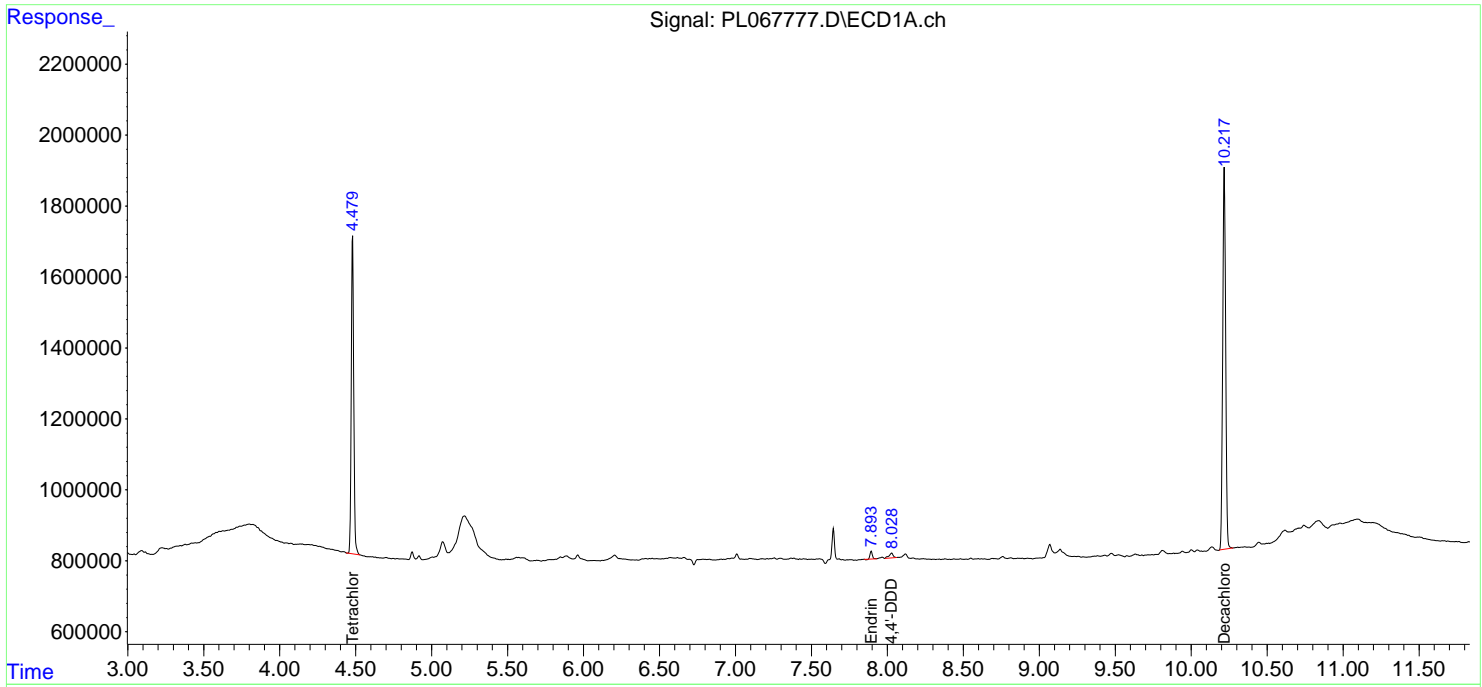
(f)=RT Delta > 1/2 Window (#)=Amounts differ by > 25% (m)=manual int.

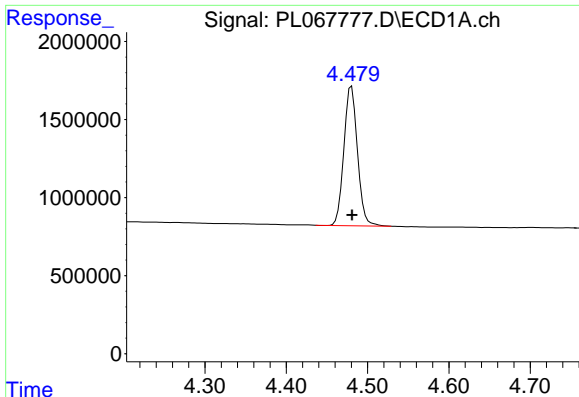
Data Path : Z:\pestpcbsrv\HPCHEM1\ECD_L\Data\PL062421\
 Data File : PL067777.D
 Signal(s) : Signal #1: ECD1A.ch Signal #2: ECD2B.ch
 Acq On : 24 Jun 2021 14:39
 Operator : AR\AJ
 Sample : PB137313BL
 Misc :
 ALS Vial : 8 Sample Multiplier: 1

Instrument :
 ECD_L
 ClientSampled :

Integration File signal 1: autoint1.e
 Integration File signal 2: autoint2.e
 Quant Time: Jun 25 01:21:11 2021
 Quant Method : Z:\pestpcbsrv\HPCHEM1\ECD_L\methods\PL061021.M
 Quant Title : GC Extractables
 QLast Update : Fri Jun 11 02:00:12 2021
 Response via : Initial Calibration
 Integrator: ChemStation

Volume Inj. : 1 µl
 Signal #1 Phase : ZB-MR2 Signal #2 Phase: ZB-MR1
 Signal #1 Info : 30M x 0.32mm x0.2 Signal #2 Info : 30M x 0.32mm x0.5µm

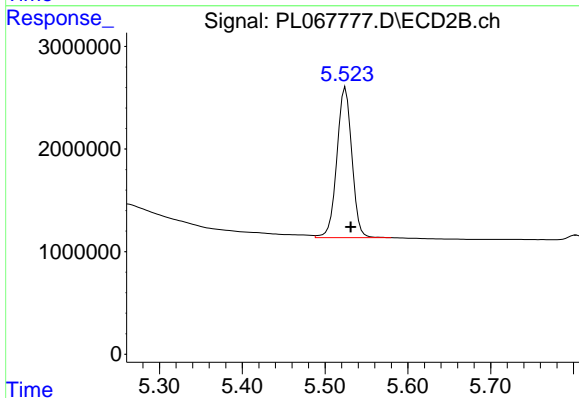




#1 Tetrachloro-m-xylene

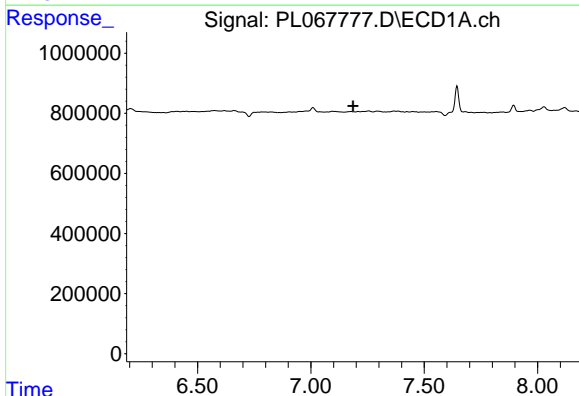
R.T.: 4.480 min
 Delta R.T.: 0.000 min
 Response: 10344532
 Conc: 18.82 ng/ml

Instrument :
 ECD_L
 ClientSampled :



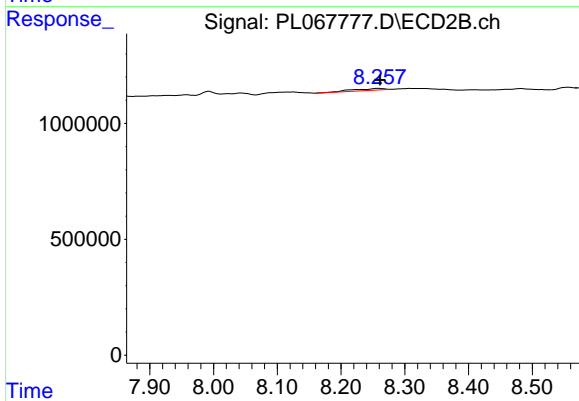
#1 Tetrachloro-m-xylene

R.T.: 5.525 min
 Delta R.T.: -0.006 min
 Response: 18429254
 Conc: 19.55 ng/ml



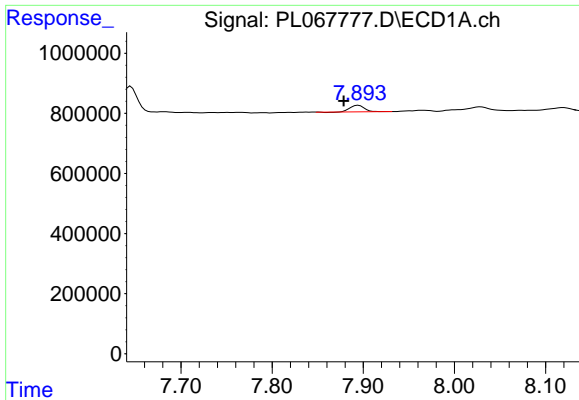
#10 gamma-Chlordane

R.T.: 0.000 min
 Exp R.T. : 7.186 min
 Response: 0
 Conc: N.D.



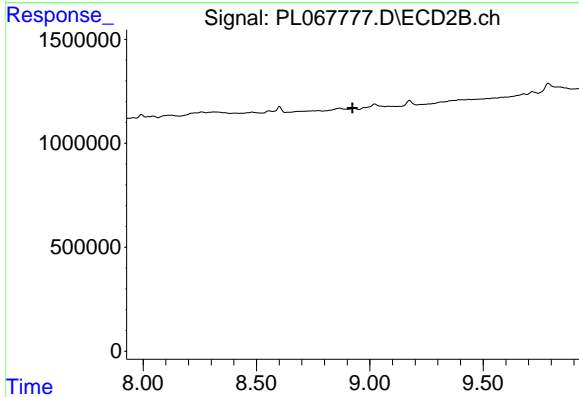
#10 gamma-Chlordane

R.T.: 8.259 min
 Delta R.T.: -0.003 min
 Response: 273997
 Conc: 0.27 ng/ml

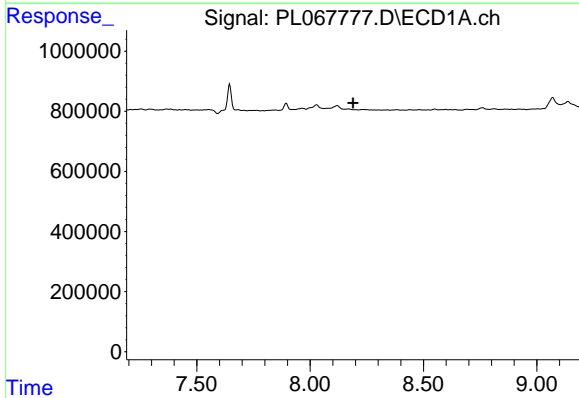


#14 Endrin
 R.T.: 7.895 min
 Delta R.T.: 0.016 min
 Response: 233198
 Conc: 0.36 ng/ml

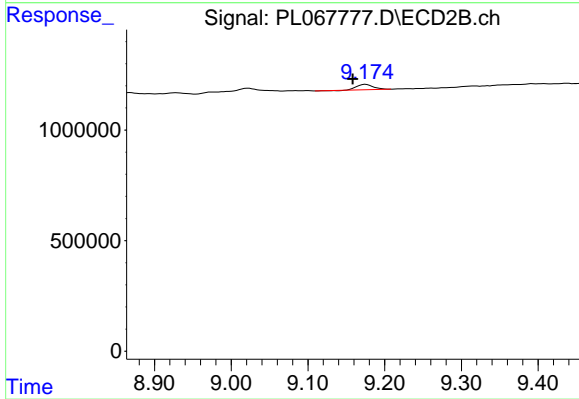
Instrument :
 ECD_L
 ClientSampled :



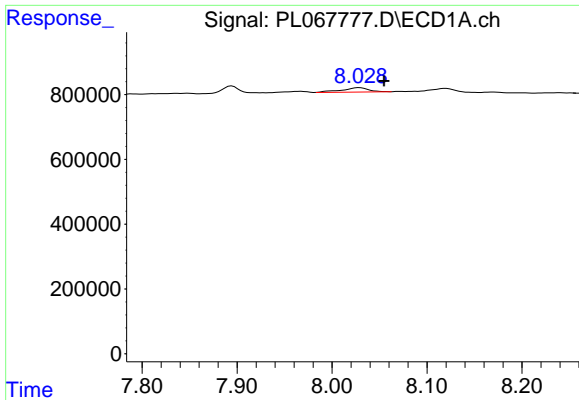
#14 Endrin
 R.T.: 0.000 min
 Exp R.T. : 8.924 min
 Response: 0
 Conc: N.D.



#15 Endosulfan II
 R.T.: 0.000 min
 Exp R.T. : 8.190 min
 Response: 0
 Conc: N.D.

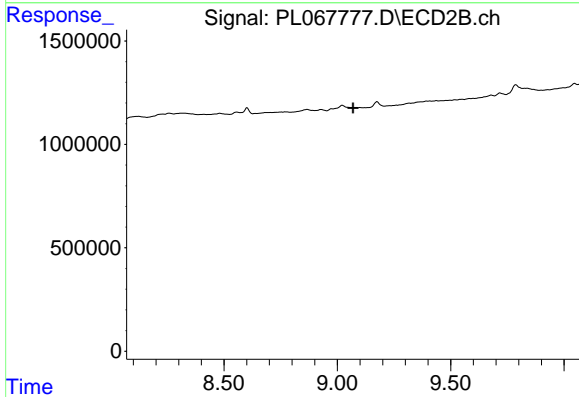


#15 Endosulfan II
 R.T.: 9.175 min
 Delta R.T.: 0.017 min
 Response: 356466
 Conc: 0.45 ng/ml

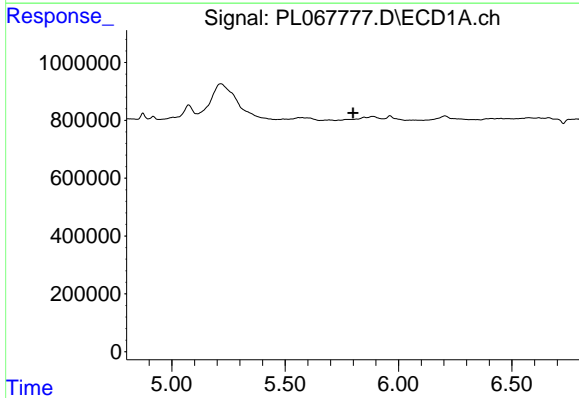


#16 4,4'-DDD
 R.T.: 8.029 min
 Delta R.T.: -0.026 min
 Response: 258062
 Conc: 0.44 ng/ml

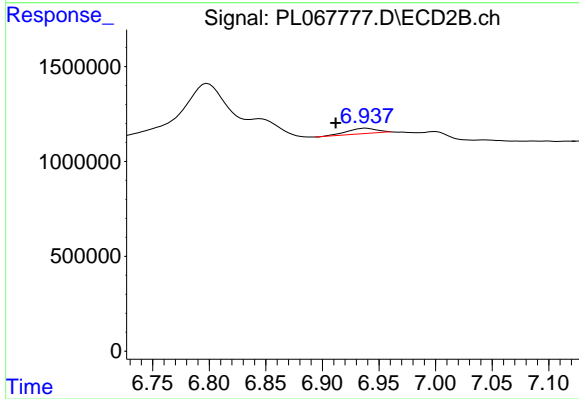
Instrument :
 ECD_L
 ClientSampled :



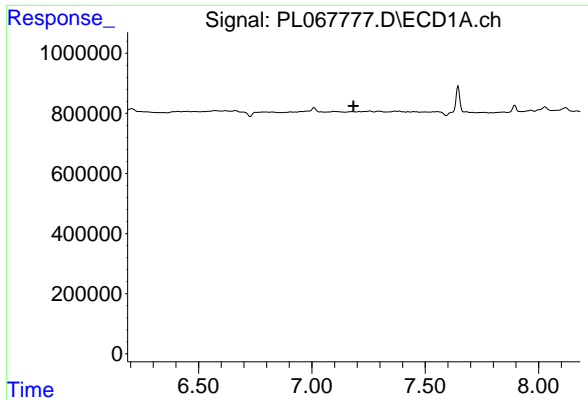
#16 4,4'-DDD
 R.T.: 0.000 min
 Exp R.T. : 9.069 min
 Response: 0
 Conc: N.D.



#23 Chlordane-1
 R.T.: 0.000 min
 Exp R.T. : 5.800 min
 Response: 0
 Conc: N.D.

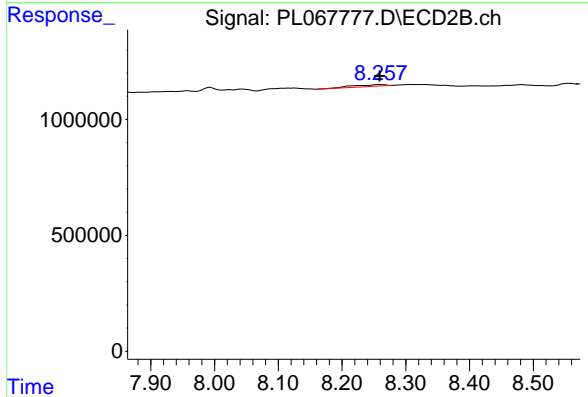


#23 Chlordane-1
 R.T.: 6.938 min
 Delta R.T.: 0.027 min
 Response: 305572
 Conc: 10.82 ng/ml

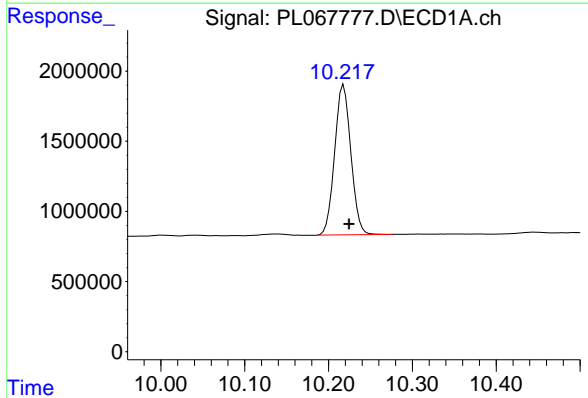


#25 Chlordane-3
 R.T.: 0.000 min
 Exp R.T.: 7.184 min
 Response: 0
 Conc: N.D.

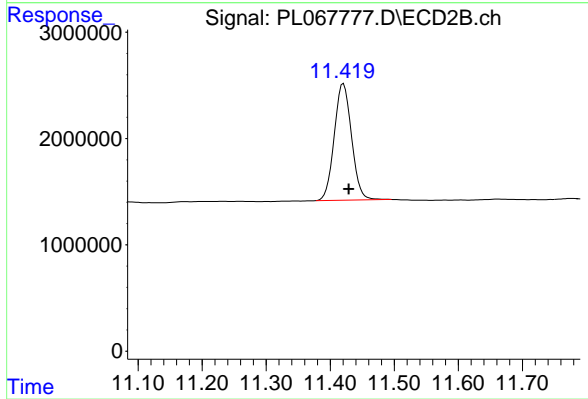
Instrument :
 ECD_L
 ClientSampled :



#25 Chlordane-3
 R.T.: 8.259 min
 Delta R.T.: 0.000 min
 Response: 273997
 Conc: 2.05 ng/ml



#28 Decachlorobiphenyl
 R.T.: 10.218 min
 Delta R.T.: -0.006 min
 Response: 14370277
 Conc: 20.28 ng/ml



#28 Decachlorobiphenyl
 R.T.: 11.421 min
 Delta R.T.: -0.008 min
 Response: 20622547
 Conc: 20.70 ng/ml