

Data Path : Z:\pestpcbsrv\HPCHEM1\ECD_L\Data\PL062421\
 Data File : PL067781.D
 Signal(s) : Signal #1: ECD1A.ch Signal #2: ECD2B.ch
 Acq On : 24 Jun 2021 16:33
 Operator : AR\AJ
 Sample : M2833-01MS
 Misc :
 ALS Vial : 12 Sample Multiplier: 1

Instrument :
 ECD_L
 ClientSampleId :

Integration File signal 1: autoint1.e
 Integration File signal 2: autoint2.e
 Quant Time: Jun 25 01:22:16 2021
 Quant Method : Z:\pestpcbsrv\HPCHEM1\ECD_L\methods\PL061021.M
 Quant Title : GC Extractables
 QLast Update : Fri Jun 11 02:00:12 2021
 Response via : Initial Calibration
 Integrator: ChemStation

Volume Inj. : 1 µl
 Signal #1 Phase : ZB-MR2 Signal #2 Phase: ZB-MR1
 Signal #1 Info : 30M x 0.32mm x0.2 Signal #2 Info : 30M x 0.32mm x0.5µm

	Compound	RT#1	RT#2	Resp#1	Resp#2	ng/ml	ng/ml

System Monitoring Compounds							
1)	SA Tetrachlo...	4.478	5.529	15953484	27649285	29.018	29.329
28)	SA Decachlor...	10.219	11.425	21259559	30662491	29.999	30.784
Target Compounds							
2)	A alpha-BHC	5.178	6.109	43970186	72013476	59.783	58.241
3)	MA gamma-BHC...	5.597	6.505	41819429	67671621	55.802	57.399
4)	MA Heptachlor	6.008	7.152	41768971	63853635	55.374	57.256
5)	MB Aldrin	6.330	7.522	40064705	58748923	54.451	54.279
6)	B beta-BHC	5.981	6.760	19371489	31627342	54.139	58.244
7)	B delta-BHC	6.237	7.026	42743409	67592024	57.872	57.500
8)	B Heptachlo...	6.903	7.989	38358189	54660553	54.824	54.564
9)	A Endosulfan I	7.303	8.393	36549397	49619801	54.367	54.340
10)	B gamma-Chl...	7.182	8.258	39860037	54950950	54.979	54.425
11)	B alpha-Chl...	7.250	8.339	39547420	54040247	54.018	53.526
12)	B 4,4'-DDE	7.469	8.527	37083470	50671544	55.739	55.933
13)	MA Dieldrin	7.588	8.682	39293627	51594436	56.053	56.808
14)	MA Endrin	7.875	8.921	36660053	43529555	55.914	56.909
15)	B Endosulfa...	8.185	9.155	34573272	45281841	56.137	56.794
16)	A 4,4'-DDD	8.050	9.066	31832761	40929391	54.764	57.550
17)	MA 4,4'-DDT	8.309	9.383	31671350	38579230	54.429	52.621
18)	B Endrin al...	8.372	9.290	29897640	38491709	59.054	60.273
19)	B Endosulfa...	8.603	9.527	35806964	44889305	56.407	56.523
20)	A Methoxychlor	8.903	9.869	19231062	21951233	54.100	56.459
21)	B Endrin ke...	9.112	10.024	42135034	50986097	55.342	56.253
22)	Mirex	9.300	10.489	33171347	41876856	52.672	55.393
24)	Chlordane-2	0.000	7.522f	0	58748923	N.D.	1611.936 #
25)	Chlordane-3	7.182	8.258	39860037	54950950	593.238	410.578 #
26)	Chlordane-4	7.250	8.339	39547420	54040247	541.162	333.375 #
27)	Chlordane-5	8.185	0.000	34573272	0	1580.198	N.D. #

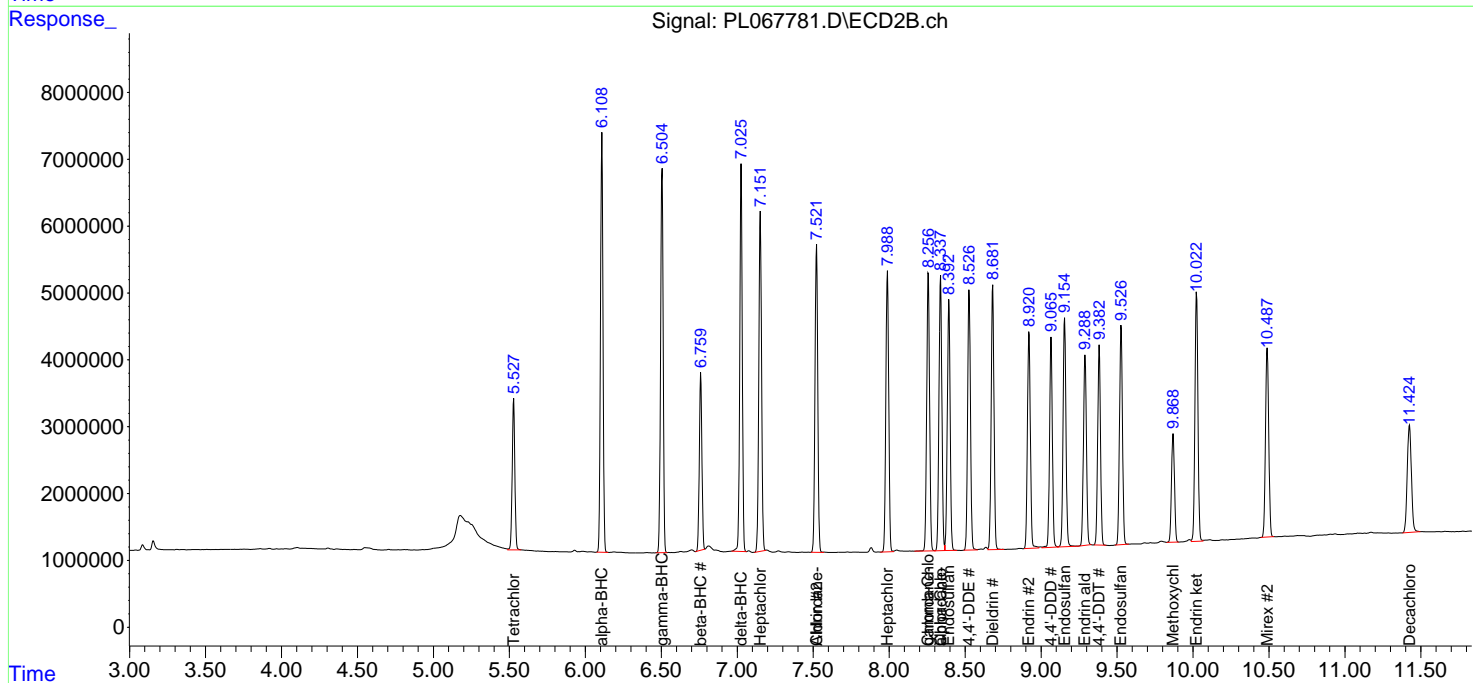
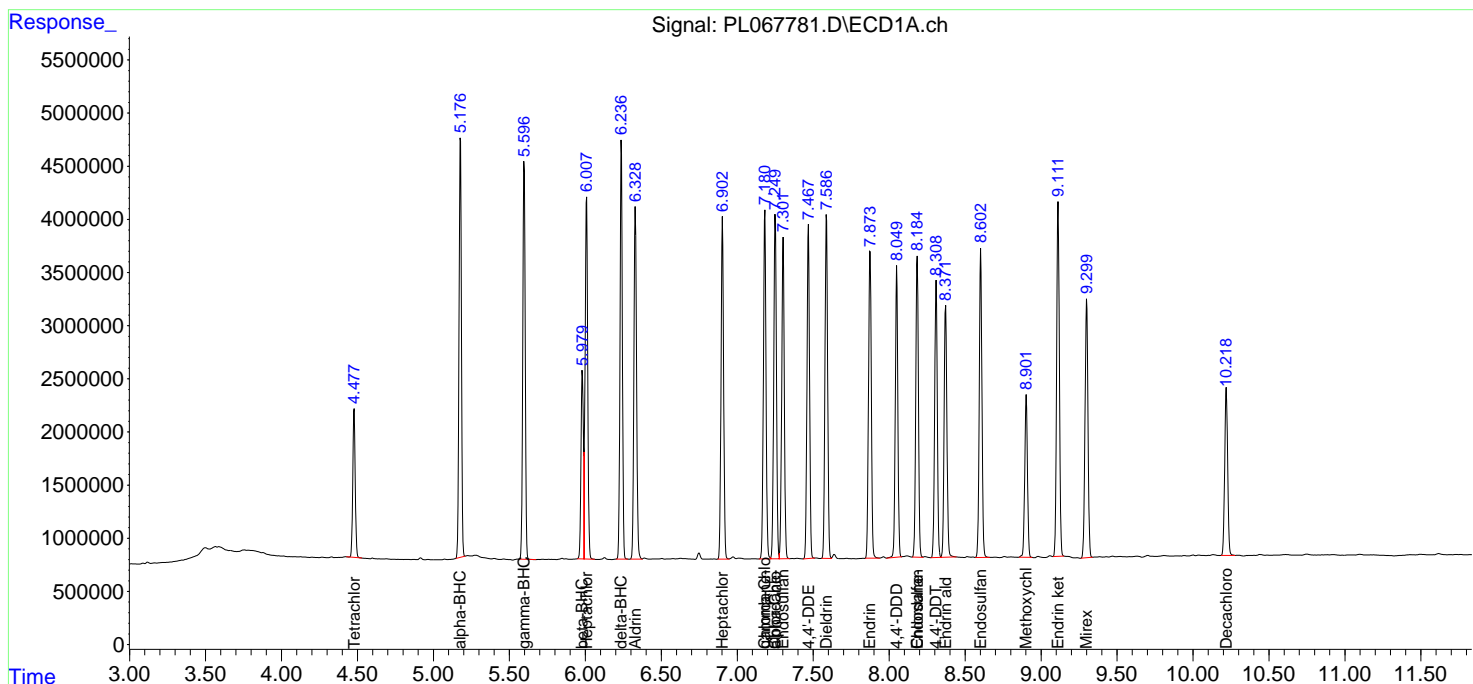
(f)=RT Delta > 1/2 Window (#)=Amounts differ by > 25% (m)=manual int.

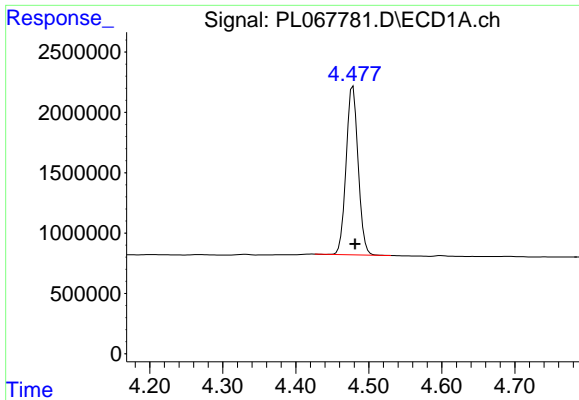
Data Path : Z:\pestpcbsrv\HPCHEM1\ECD_L\Data\PL062421\
 Data File : PL067781.D
 Signal(s) : Signal #1: ECD1A.ch Signal #2: ECD2B.ch
 Acq On : 24 Jun 2021 16:33
 Operator : AR\AJ
 Sample : M2833-01MS
 Misc :
 ALS Vial : 12 Sample Multiplier: 1

Instrument :
 ECD_L
 ClientSampled :

Integration File signal 1: autoint1.e
 Integration File signal 2: autoint2.e
 Quant Time: Jun 25 01:22:16 2021
 Quant Method : Z:\pestpcbsrv\HPCHEM1\ECD_L\methods\PL061021.M
 Quant Title : GC Extractables
 QLast Update : Fri Jun 11 02:00:12 2021
 Response via : Initial Calibration
 Integrator: ChemStation

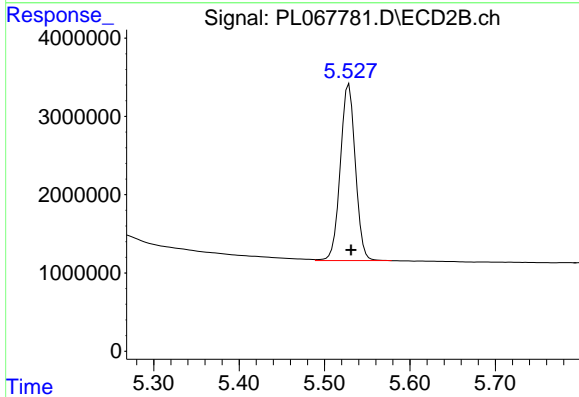
Volume Inj. : 1 µl
 Signal #1 Phase : ZB-MR2 Signal #2 Phase: ZB-MR1
 Signal #1 Info : 30M x 0.32mm x0.2 Signal #2 Info : 30M x 0.32mm x0.5µm



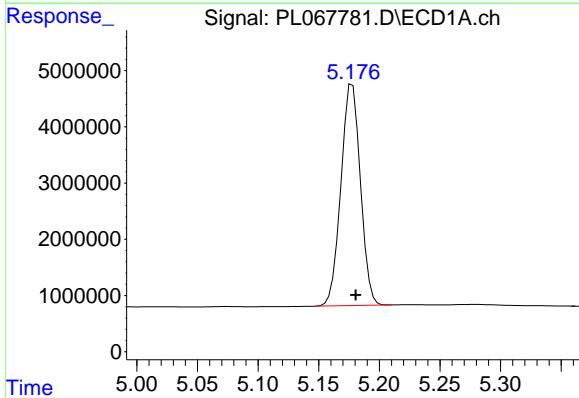


#1 Tetrachloro-m-xylene
 R.T.: 4.478 min
 Delta R.T.: -0.003 min
 Response: 15953484
 Conc: 29.02 ng/ml

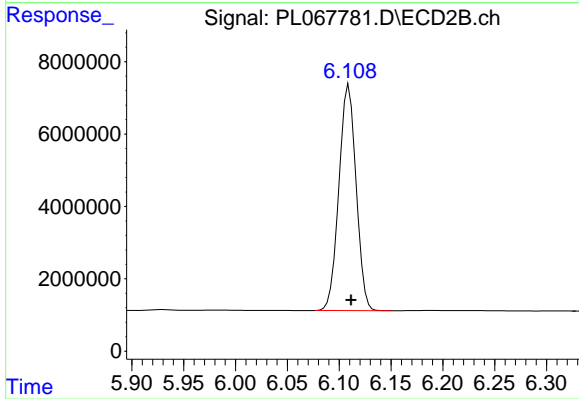
Instrument :
 ECD_L
 ClientSampleId :



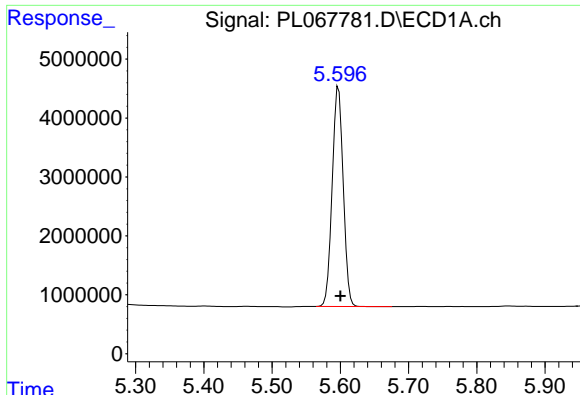
#1 Tetrachloro-m-xylene
 R.T.: 5.529 min
 Delta R.T.: -0.002 min
 Response: 27649285
 Conc: 29.33 ng/ml



#2 alpha-BHC
 R.T.: 5.178 min
 Delta R.T.: -0.003 min
 Response: 43970186
 Conc: 59.78 ng/ml

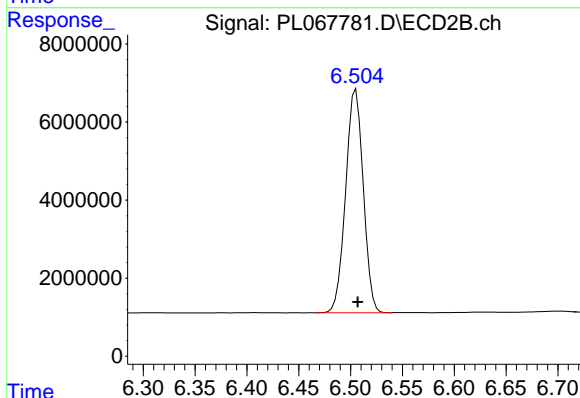


#2 alpha-BHC
 R.T.: 6.109 min
 Delta R.T.: -0.002 min
 Response: 72013476
 Conc: 58.24 ng/ml

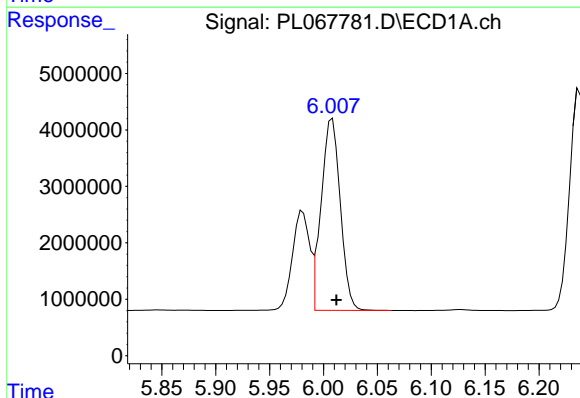


#3 gamma-BHC (Lindane)
 R.T.: 5.597 min
 Delta R.T.: -0.003 min
 Response: 41819429
 Conc: 55.80 ng/ml

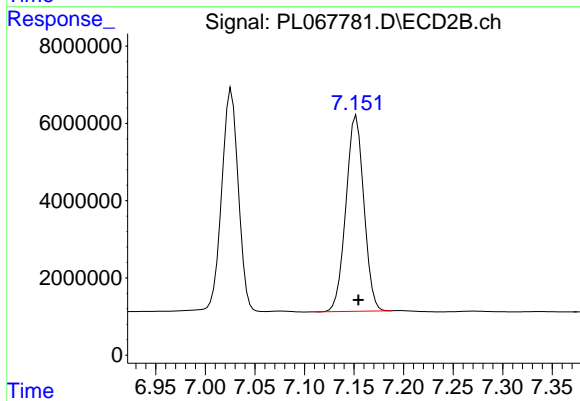
Instrument :
 ECD_L
 ClientSampleId :



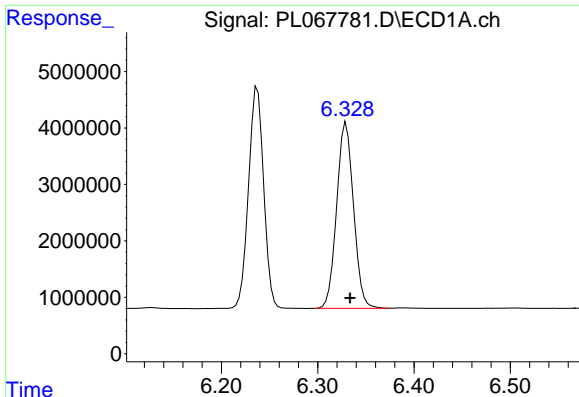
#3 gamma-BHC (Lindane)
 R.T.: 6.505 min
 Delta R.T.: -0.002 min
 Response: 67671621
 Conc: 57.40 ng/ml



#4 Heptachlor
 R.T.: 6.008 min
 Delta R.T.: -0.004 min
 Response: 41768971
 Conc: 55.37 ng/ml

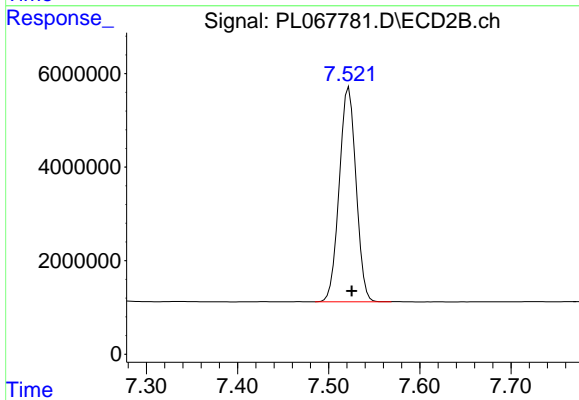


#4 Heptachlor
 R.T.: 7.152 min
 Delta R.T.: -0.002 min
 Response: 63853635
 Conc: 57.26 ng/ml

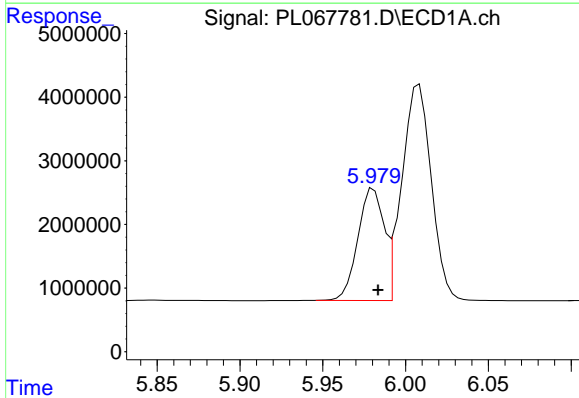


#5 Aldrin
 R.T.: 6.330 min
 Delta R.T.: -0.004 min
 Response: 40064705
 Conc: 54.45 ng/ml

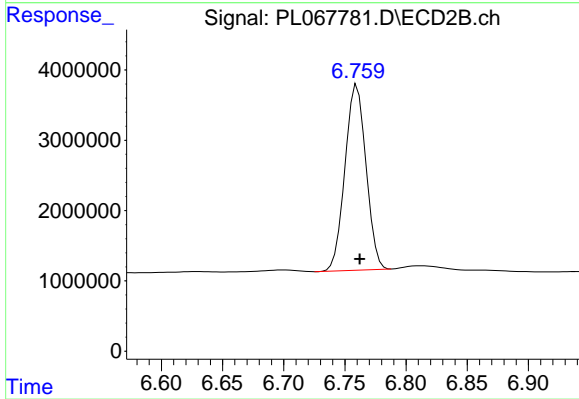
Instrument :
 ECD_L
 ClientSampled :



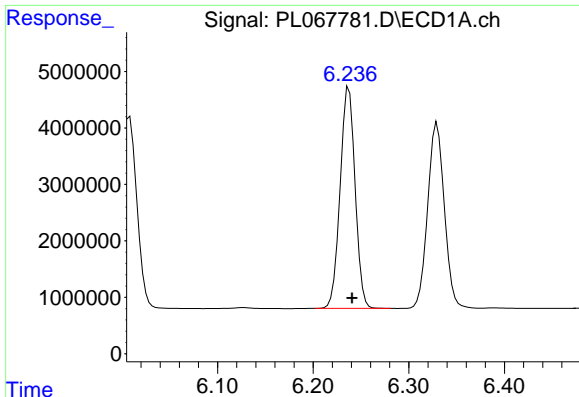
#5 Aldrin
 R.T.: 7.522 min
 Delta R.T.: -0.003 min
 Response: 58748923
 Conc: 54.28 ng/ml



#6 beta-BHC
 R.T.: 5.981 min
 Delta R.T.: -0.003 min
 Response: 19371489
 Conc: 54.14 ng/ml



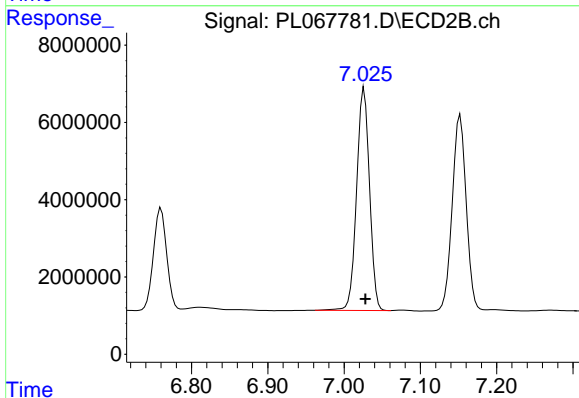
#6 beta-BHC
 R.T.: 6.760 min
 Delta R.T.: -0.002 min
 Response: 31627342
 Conc: 58.24 ng/ml



#7 delta-BHC

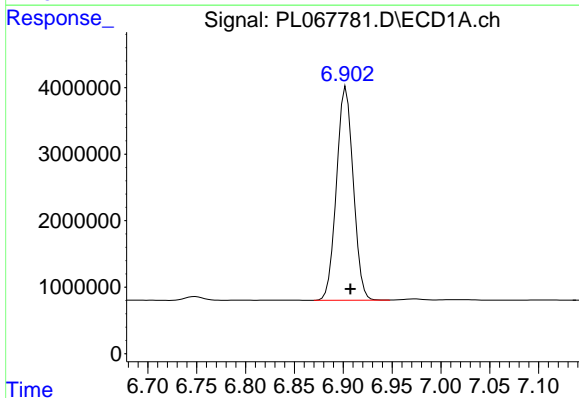
R.T.: 6.237 min
 Delta R.T.: -0.003 min
 Response: 42743409
 Conc: 57.87 ng/ml

Instrument :
 ECD_L
 ClientSampleId :



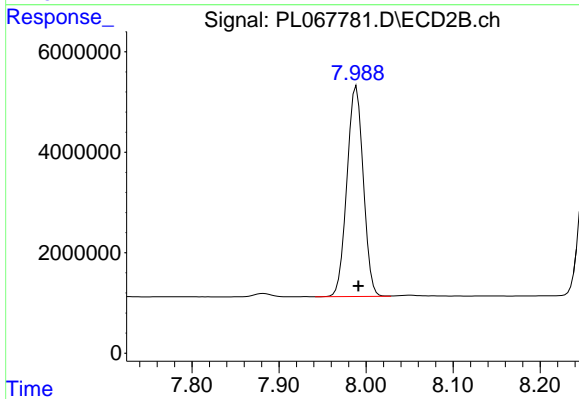
#7 delta-BHC

R.T.: 7.026 min
 Delta R.T.: -0.002 min
 Response: 67592024
 Conc: 57.50 ng/ml



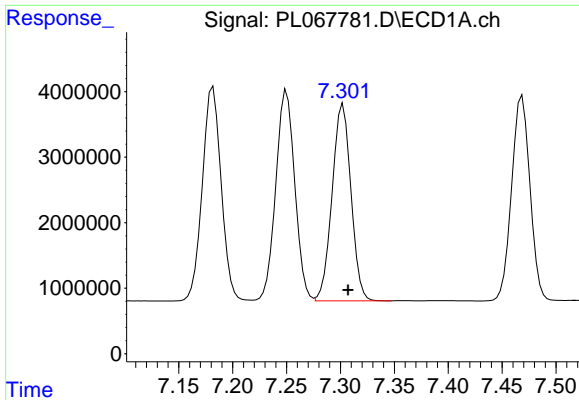
#8 Heptachlor epoxide

R.T.: 6.903 min
 Delta R.T.: -0.004 min
 Response: 38358189
 Conc: 54.82 ng/ml



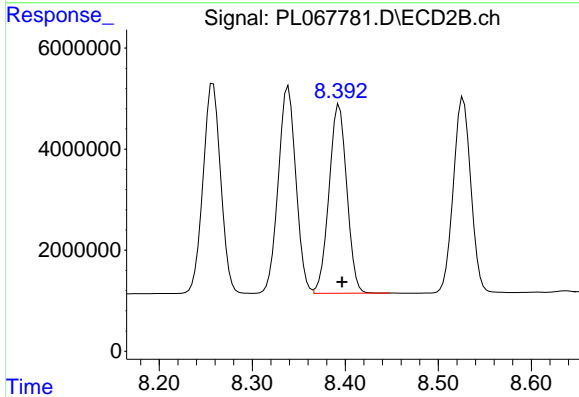
#8 Heptachlor epoxide

R.T.: 7.989 min
 Delta R.T.: -0.002 min
 Response: 54660553
 Conc: 54.56 ng/ml

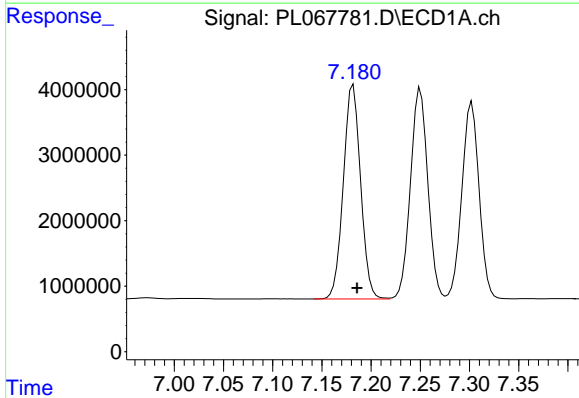


#9 Endosulfan I
 R.T.: 7.303 min
 Delta R.T.: -0.004 min
 Response: 36549397
 Conc: 54.37 ng/ml

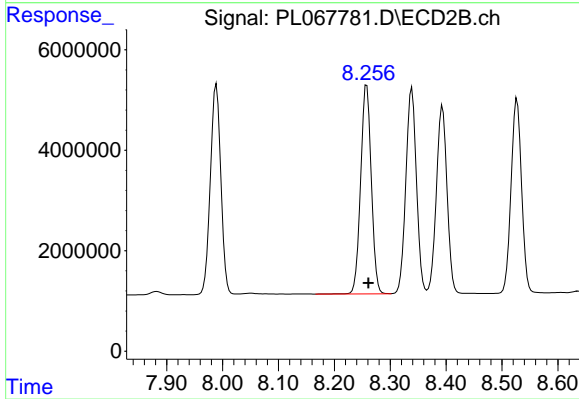
Instrument :
 ECD_L
 ClientSampleId :



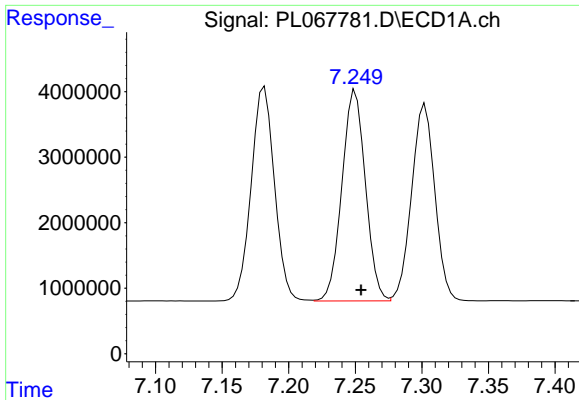
#9 Endosulfan I
 R.T.: 8.393 min
 Delta R.T.: -0.003 min
 Response: 49619801
 Conc: 54.34 ng/ml



#10 gamma-Chlordane
 R.T.: 7.182 min
 Delta R.T.: -0.004 min
 Response: 39860037
 Conc: 54.98 ng/ml

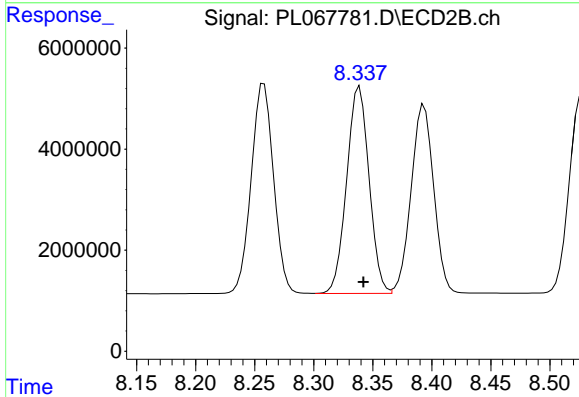


#10 gamma-Chlordane
 R.T.: 8.258 min
 Delta R.T.: -0.003 min
 Response: 54950950
 Conc: 54.43 ng/ml

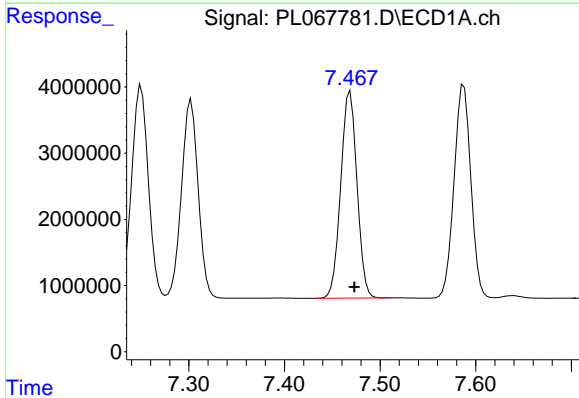


#11 alpha-Chlordane
R.T.: 7.250 min
Delta R.T.: -0.004 min
Response: 39547420
Conc: 54.02 ng/ml

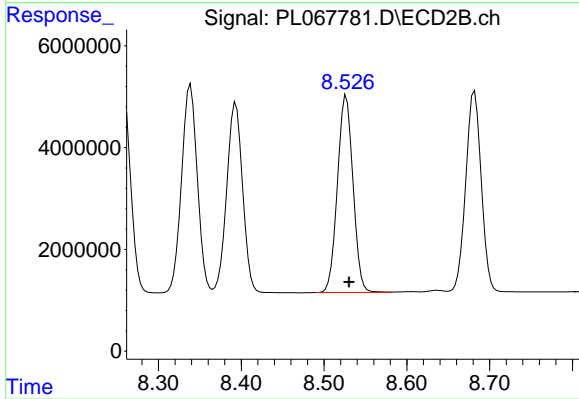
Instrument :
ECD_L
ClientSampleId :



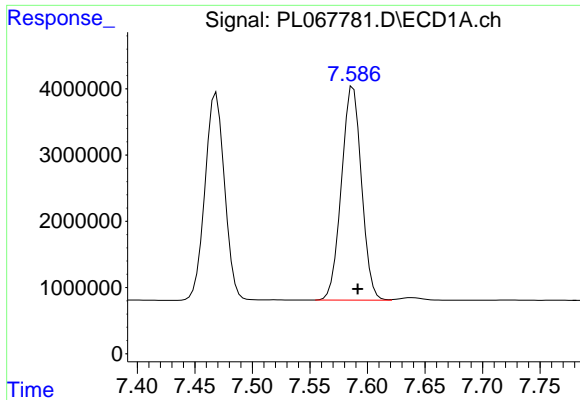
#11 alpha-Chlordane
R.T.: 8.339 min
Delta R.T.: -0.003 min
Response: 54040247
Conc: 53.53 ng/ml



#12 4,4'-DDE
R.T.: 7.469 min
Delta R.T.: -0.004 min
Response: 37083470
Conc: 55.74 ng/ml

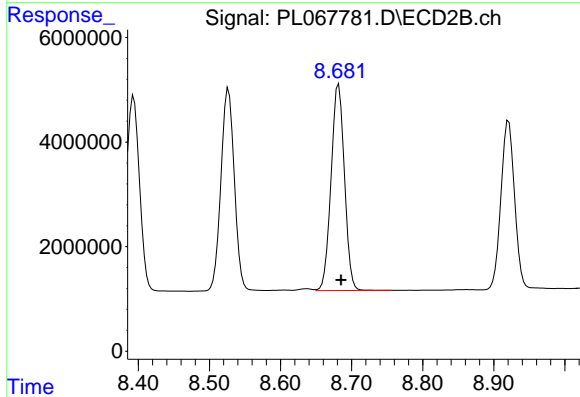


#12 4,4'-DDE
R.T.: 8.527 min
Delta R.T.: -0.004 min
Response: 50671544
Conc: 55.93 ng/ml

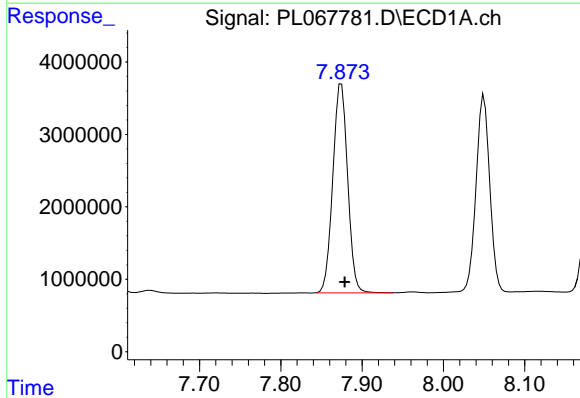


#13 Dieldrin
 R.T.: 7.588 min
 Delta R.T.: -0.004 min
 Response: 39293627
 Conc: 56.05 ng/ml

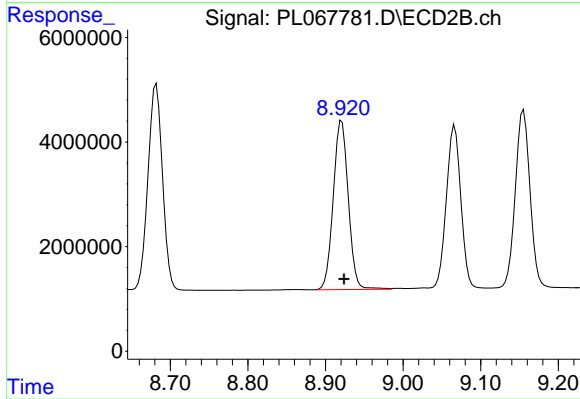
Instrument :
 ECD_L
 ClientSampled :



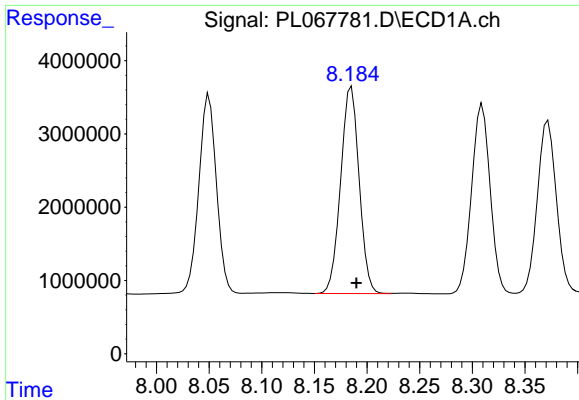
#13 Dieldrin
 R.T.: 8.682 min
 Delta R.T.: -0.003 min
 Response: 51594436
 Conc: 56.81 ng/ml



#14 Endrin
 R.T.: 7.875 min
 Delta R.T.: -0.004 min
 Response: 36660053
 Conc: 55.91 ng/ml

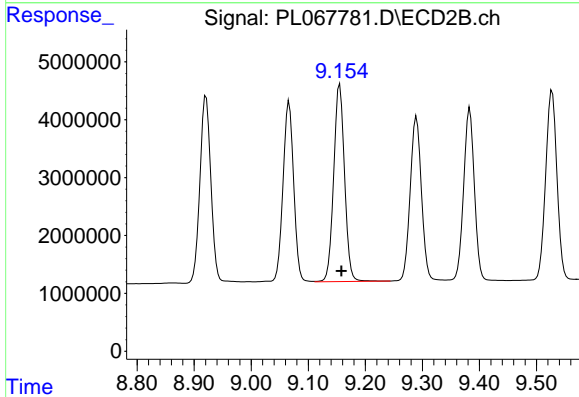


#14 Endrin
 R.T.: 8.921 min
 Delta R.T.: -0.003 min
 Response: 43529555
 Conc: 56.91 ng/ml

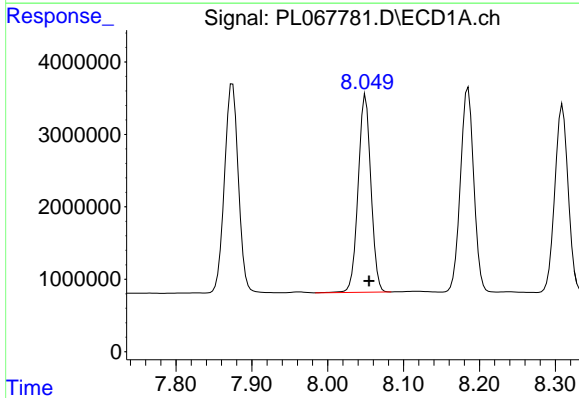


#15 Endosulfan II
 R.T.: 8.185 min
 Delta R.T.: -0.005 min
 Response: 34573272
 Conc: 56.14 ng/ml

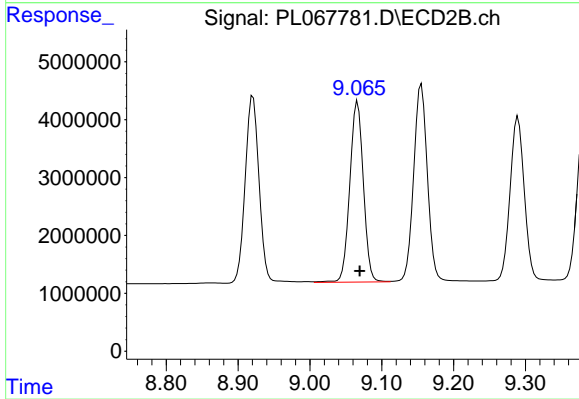
Instrument :
 ECD_L
 ClientSampled :



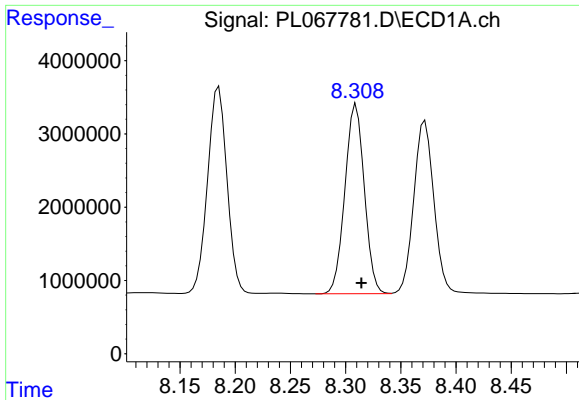
#15 Endosulfan II
 R.T.: 9.155 min
 Delta R.T.: -0.003 min
 Response: 45281841
 Conc: 56.79 ng/ml



#16 4,4'-DDD
 R.T.: 8.050 min
 Delta R.T.: -0.005 min
 Response: 31832761
 Conc: 54.76 ng/ml

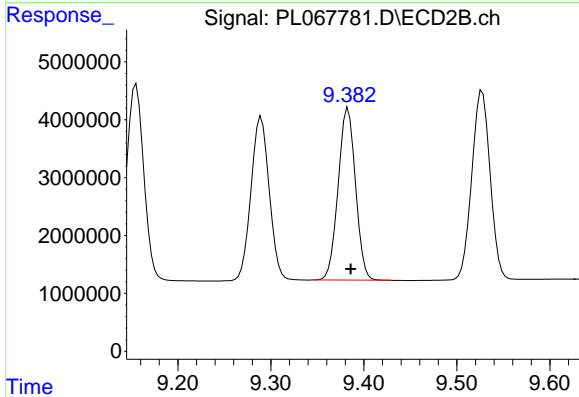


#16 4,4'-DDD
 R.T.: 9.066 min
 Delta R.T.: -0.003 min
 Response: 40929391
 Conc: 57.55 ng/ml

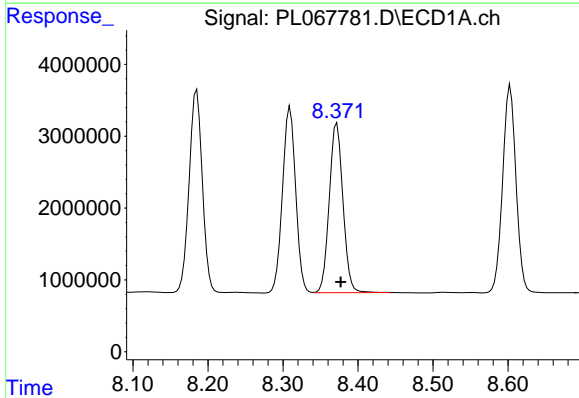


#17 4,4'-DDT
 R.T.: 8.309 min
 Delta R.T.: -0.005 min
 Response: 31671350
 Conc: 54.43 ng/ml

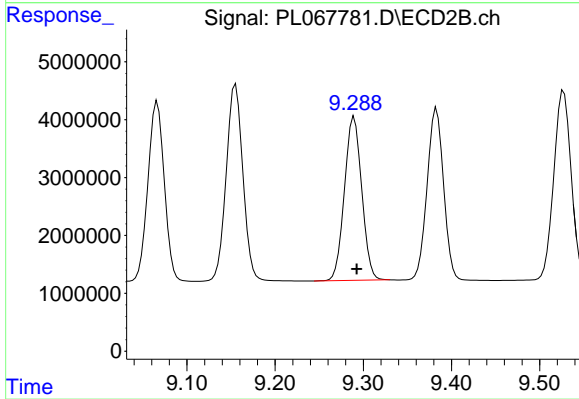
Instrument :
 ECD_L
 ClientSampleId :



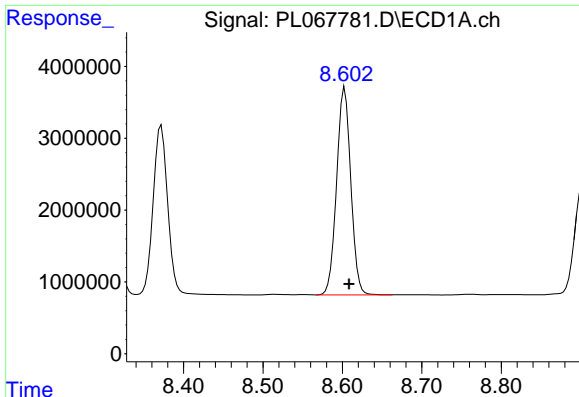
#17 4,4'-DDT
 R.T.: 9.383 min
 Delta R.T.: -0.003 min
 Response: 38579230
 Conc: 52.62 ng/ml



#18 Endrin aldehyde
 R.T.: 8.372 min
 Delta R.T.: -0.005 min
 Response: 29897640
 Conc: 59.05 ng/ml



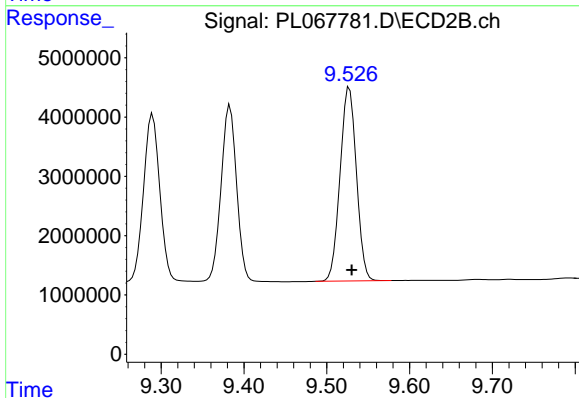
#18 Endrin aldehyde
 R.T.: 9.290 min
 Delta R.T.: -0.003 min
 Response: 38491709
 Conc: 60.27 ng/ml



#19 Endosulfan Sulfate

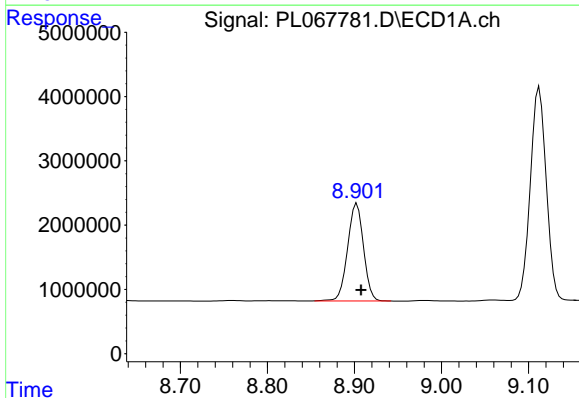
R.T.: 8.603 min
Delta R.T.: -0.005 min
Response: 35806964
Conc: 56.41 ng/ml

Instrument :
ECD_L
ClientSampled :



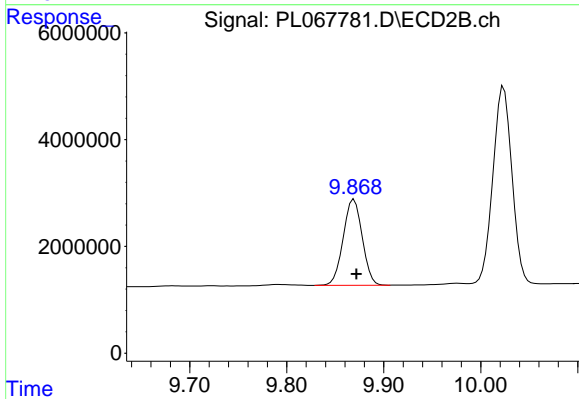
#19 Endosulfan Sulfate

R.T.: 9.527 min
Delta R.T.: -0.003 min
Response: 44889305
Conc: 56.52 ng/ml



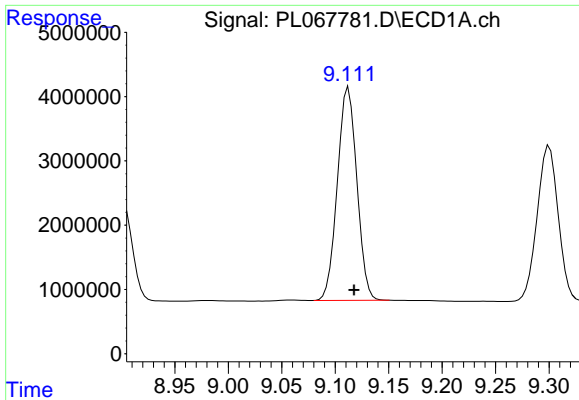
#20 Methoxychlor

R.T.: 8.903 min
Delta R.T.: -0.005 min
Response: 19231062
Conc: 54.10 ng/ml



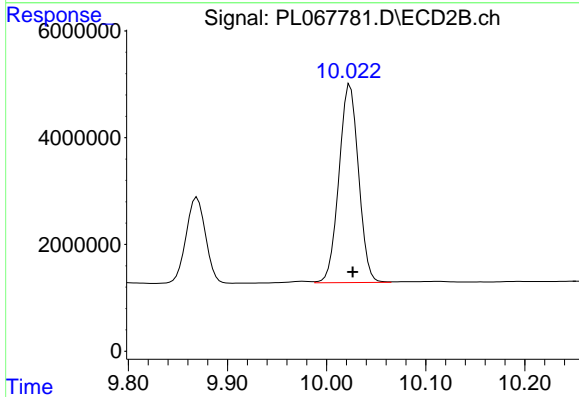
#20 Methoxychlor

R.T.: 9.869 min
Delta R.T.: -0.002 min
Response: 21951233
Conc: 56.46 ng/ml

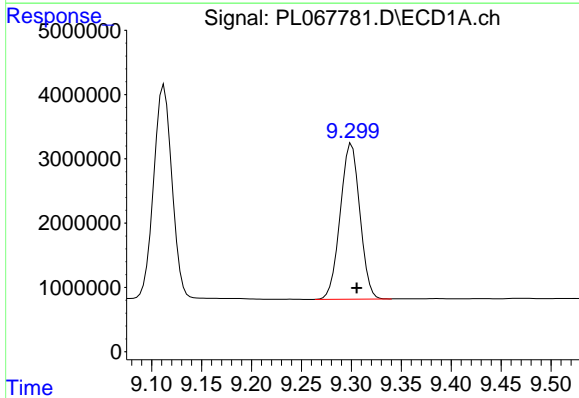


#21 Endrin ketone
 R.T.: 9.112 min
 Delta R.T.: -0.005 min
 Response: 42135034
 Conc: 55.34 ng/ml

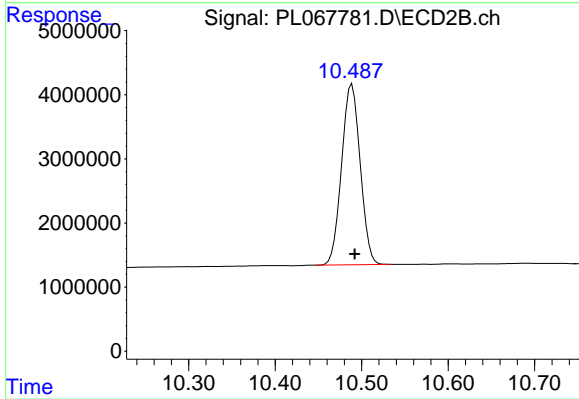
Instrument :
 ECD_L
 ClientSampled :



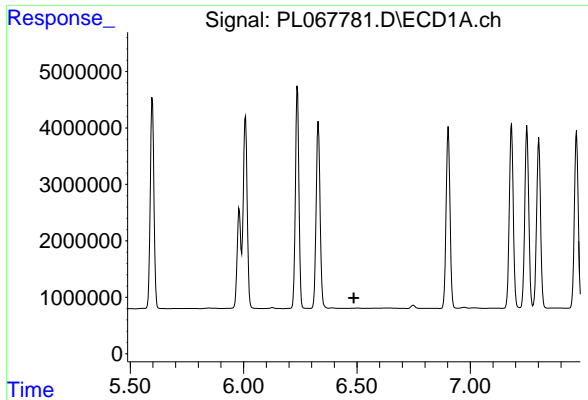
#21 Endrin ketone
 R.T.: 10.024 min
 Delta R.T.: -0.003 min
 Response: 50986097
 Conc: 56.25 ng/ml



#22 Mirex
 R.T.: 9.300 min
 Delta R.T.: -0.005 min
 Response: 33171347
 Conc: 52.67 ng/ml



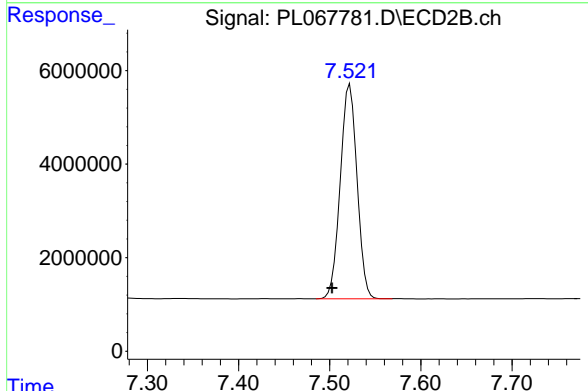
#22 Mirex
 R.T.: 10.489 min
 Delta R.T.: -0.003 min
 Response: 41876856
 Conc: 55.39 ng/ml



#24 Chlordane-2

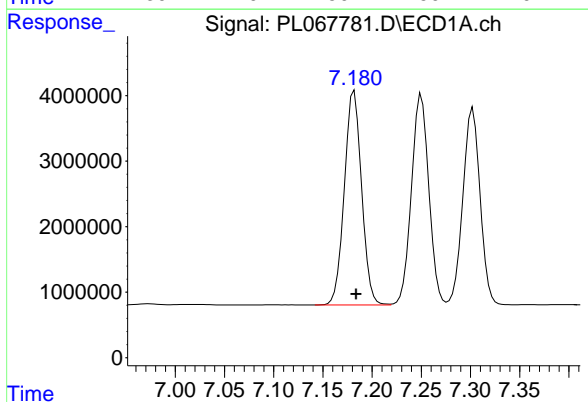
R.T.: 0.000 min
 Exp R.T.: 6.486 min
 Response: 0
 Conc: N.D.

Instrument :
 ECD_L
 ClientSampled :



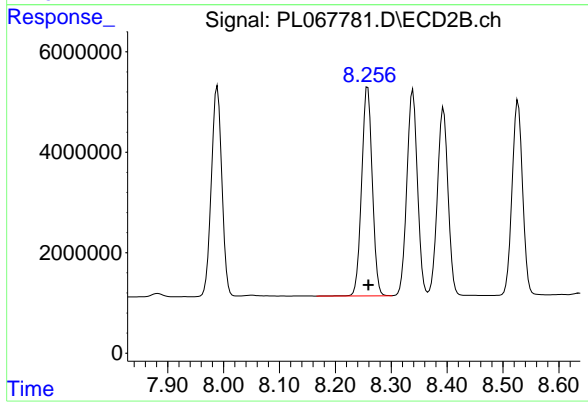
#24 Chlordane-2

R.T.: 7.522 min
 Delta R.T.: 0.020 min
 Response: 58748923
 Conc: 1611.94 ng/ml



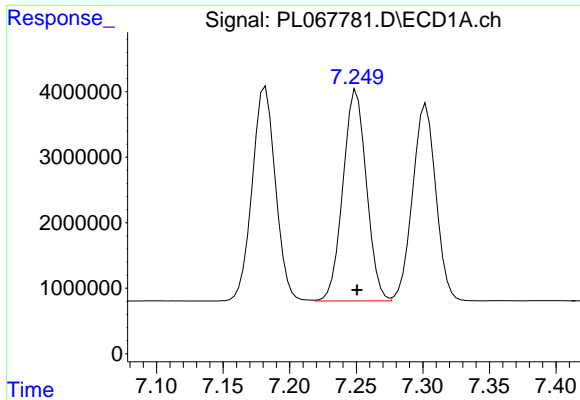
#25 Chlordane-3

R.T.: 7.182 min
 Delta R.T.: -0.002 min
 Response: 39860037
 Conc: 593.24 ng/ml



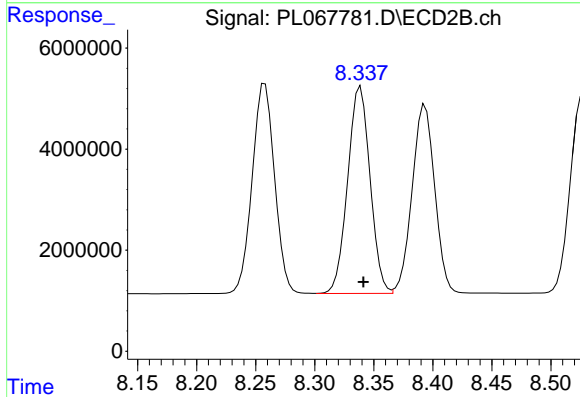
#25 Chlordane-3

R.T.: 8.258 min
 Delta R.T.: -0.002 min
 Response: 54950950
 Conc: 410.58 ng/ml

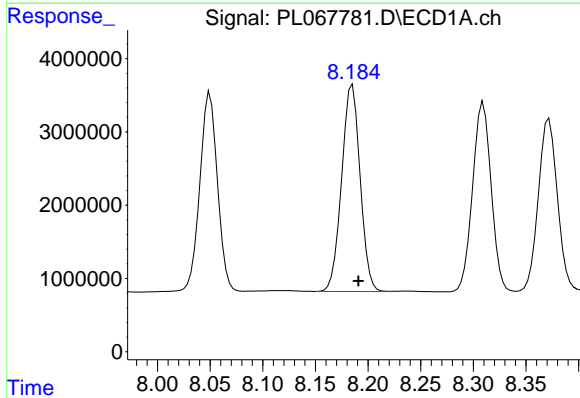


#26 Chlordane-4
 R.T.: 7.250 min
 Delta R.T.: 0.000 min
 Response: 39547420
 Conc: 541.16 ng/ml

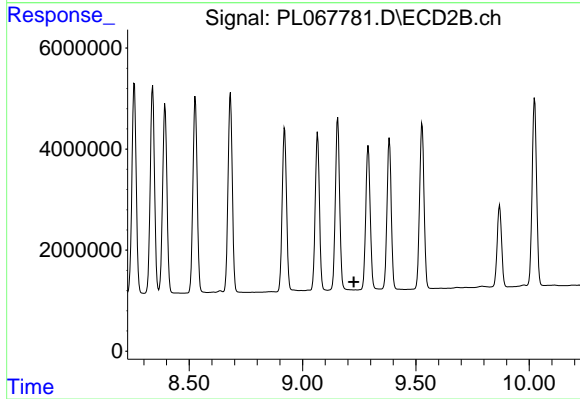
Instrument :
 ECD_L
 ClientSampled :



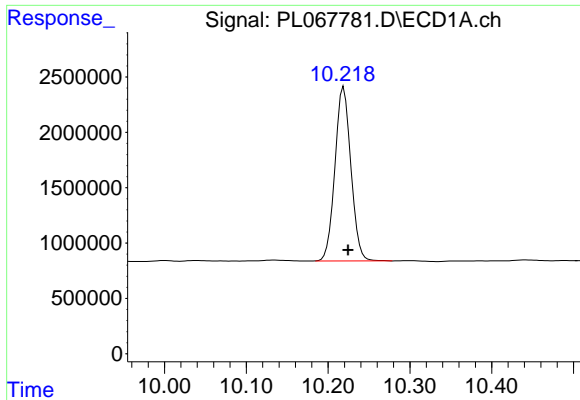
#26 Chlordane-4
 R.T.: 8.339 min
 Delta R.T.: -0.002 min
 Response: 54040247
 Conc: 333.38 ng/ml



#27 Chlordane-5
 R.T.: 8.185 min
 Delta R.T.: -0.006 min
 Response: 34573272
 Conc: 1580.20 ng/ml



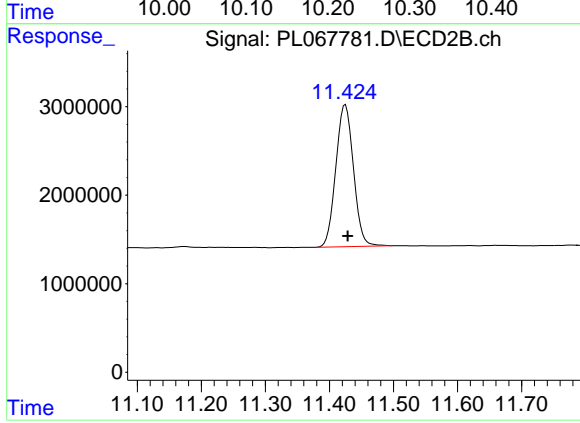
#27 Chlordane-5
 R.T.: 0.000 min
 Exp R.T.: 9.227 min
 Response: 0
 Conc: N.D.



#28 Decachlorobiphenyl

R.T.: 10.219 min
Delta R.T.: -0.005 min
Response: 21259559
Conc: 30.00 ng/ml

Instrument :
ECD_L
ClientSampleId :



#28 Decachlorobiphenyl

R.T.: 11.425 min
Delta R.T.: -0.004 min
Response: 30662491
Conc: 30.78 ng/ml