

Data Path : Z:\pestpcbsrv\HPCHEM1\ECD_L\Data\PL062422\
 Data File : PL075978.D
 Signal(s) : Signal #1: ECD1A.ch Signal #2: ECD2B.ch
 Acq On : 24 Jun 2022 15:00
 Operator : AR\AJ
 Sample : N3422-08
 Misc :
 ALS Vial : 6 Sample Multiplier: 1

Instrument :
 ECD_L
 ClientSampleId :

Integration File signal 1: autoint1.e
 Integration File signal 2: autoint2.e
 Quant Time: Jun 24 22:41:26 2022
 Quant Method : Z:\pestpcbsrv\HPCHEM1\ECD_L\methods\PL062222.M
 Quant Title : GC Extractables
 QLast Update : Fri Jun 24 02:17:51 2022
 Response via : Initial Calibration
 Integrator: ChemStation

Volume Inj. : 1 µl
 Signal #1 Phase : ZB-MR2 Signal #2 Phase: ZB-MR1
 Signal #1 Info : 30M x 0.32mm x0.2 Signal #2 Info : 30M x 0.32mm x0.5µm

	Compound	RT#1	RT#2	Resp#1	Resp#2	ng/ml	ng/ml

System Monitoring Compounds							
1)	SA Tetrachlo...	5.646	4.634	10770802	23331544	14.241	12.302
28)	SA Decachlor...	11.638	10.376	11590639	21412424	18.419	13.941
Target Compounds							
2)	A alpha-BHC	0.000	5.351f	0	114773	N.D.	0.047 #
3)	MA gamma-BHC...	6.640f	5.756	86074	157538	0.093	0.068 #
4)	MA Heptachlor	7.262	6.140f	308945	445989	0.337	0.197 #
5)	MB Aldrin	7.676f	0.000	334087	0	0.402	N.D. #
6)	B beta-BHC	6.871	6.140	814442	445989	1.860	0.428 #
7)	B delta-BHC	7.128f	6.400	1064949	853836	1.364	0.378 #
8)	Heptachlo...	8.118	0.000	1036631	0	1.302	N.D. #
9)	A Endosulfan I	0.000	7.458	0	194174	N.D.	0.111 #
10)	B gamma-Chl...	8.385	7.336	2180903	678662	2.806	0.353 #
11)	B alpha-Chl...	0.000	7.417	0	1554623	N.D.	0.812 #
12)	B 4,4'-DDE	0.000	7.617	0	384136	N.D.	0.226 #
13)	MA Dieldrin	0.000	7.760	0	445402	N.D.	0.248 #
14)	MA Endrin	0.000	8.035	0	248092	N.D.	0.163 #
15)	B Endosulfa...	9.291	8.361	967310	359482	1.525	0.238 #
16)	A 4,4'-DDD	9.201	8.196	1703722	1833851	3.005	1.322 #
17)	MA 4,4'-DDT	9.502f	8.453	193119	181186	0.316	0.123 #
18)	B Endrin al...	9.428	0.000	738385	0	1.430	N.D. #
19)	B Endosulfa...	9.646f	8.768	1163157	1199134	1.814	0.782 #
20)	A Methoxychlor	0.000	9.040	0	102256	N.D.	0.120 #
21)	B Endrin ke...	10.186f	9.285	1195022	293601	1.658	0.178 #
25)	Chlordane-3	8.385	7.336	2180903	678662	21.447	3.848 #
26)	Chlordane-4	0.000	7.417	0	1554623	N.D.	8.246 #
27)	Chlordane-5	9.367	8.136f	385745	5060454	18.078	110.603 #

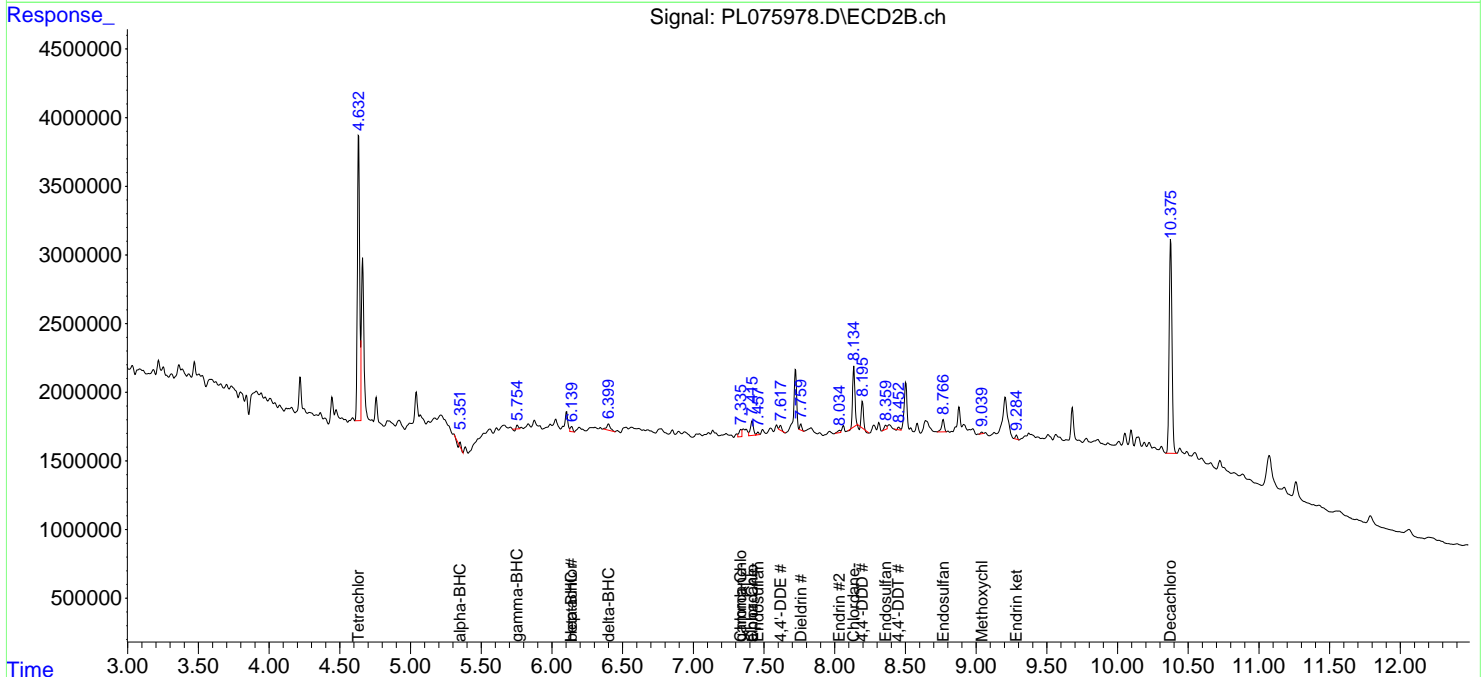
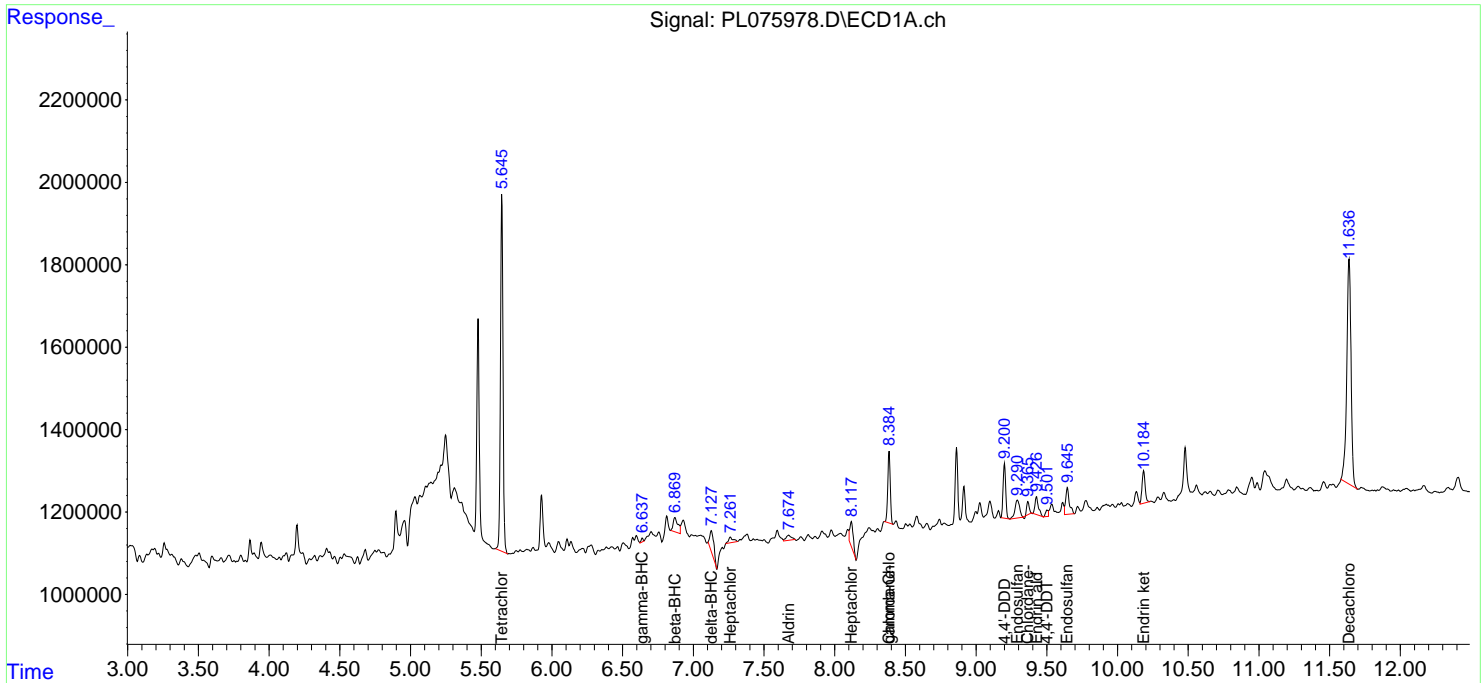
(f)=RT Delta > 1/2 Window (#)=Amounts differ by > 25% (m)=manual int.

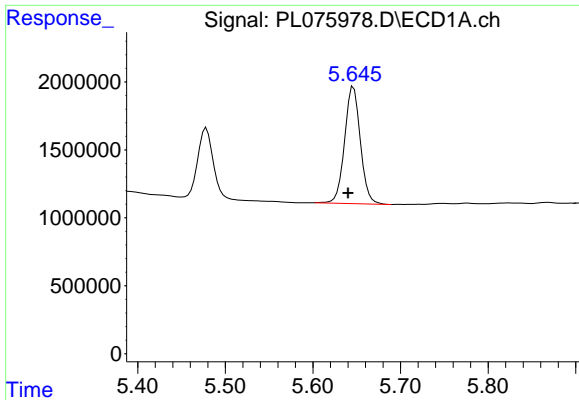
Data Path : Z:\pestpcbsrv\HPCHEM1\ECD_L\Data\PL062422\
 Data File : PL075978.D
 Signal(s) : Signal #1: ECD1A.ch Signal #2: ECD2B.ch
 Acq On : 24 Jun 2022 15:00
 Operator : AR\AJ
 Sample : N3422-08
 Misc :
 ALS Vial : 6 Sample Multiplier: 1

Instrument :
 ECD_L
 ClientSampleId :

Integration File signal 1: autoint1.e
 Integration File signal 2: autoint2.e
 Quant Time: Jun 24 22:41:26 2022
 Quant Method : Z:\pestpcbsrv\HPCHEM1\ECD_L\methods\PL062222.M
 Quant Title : GC Extractables
 QLast Update : Fri Jun 24 02:17:51 2022
 Response via : Initial Calibration
 Integrator: ChemStation

Volume Inj. : 1 µl
 Signal #1 Phase : ZB-MR2 Signal #2 Phase: ZB-MR1
 Signal #1 Info : 30M x 0.32mm x0.2 Signal #2 Info : 30M x 0.32mm x0.5µm

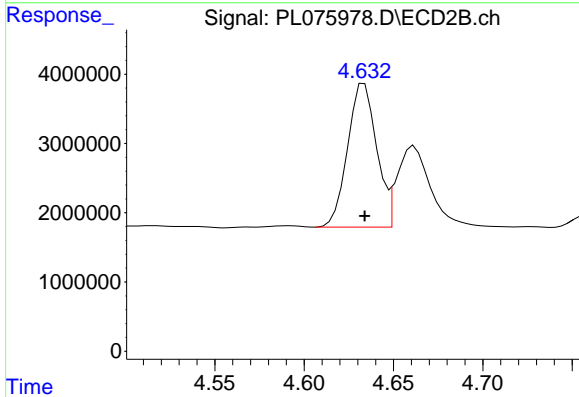




#1 Tetrachloro-m-xylene

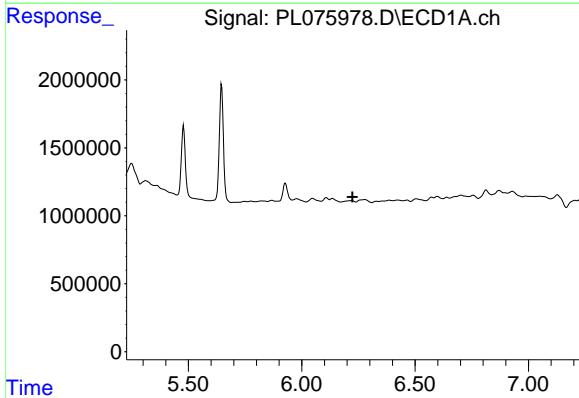
R.T.: 5.646 min
 Delta R.T.: 0.006 min
 Response: 10770802
 Conc: 14.24 ng/ml

Instrument :
 ECD_L
 ClientSampleId :



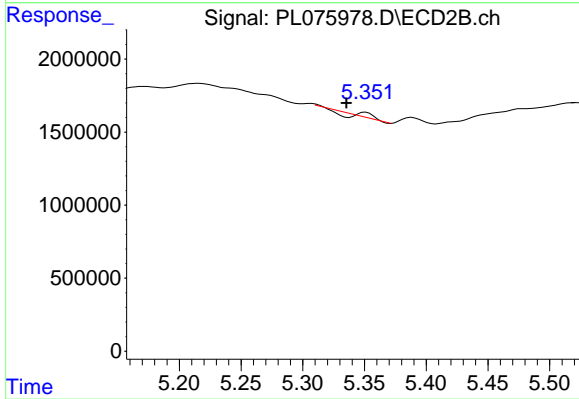
#1 Tetrachloro-m-xylene

R.T.: 4.634 min
 Delta R.T.: 0.000 min
 Response: 23331544
 Conc: 12.30 ng/ml



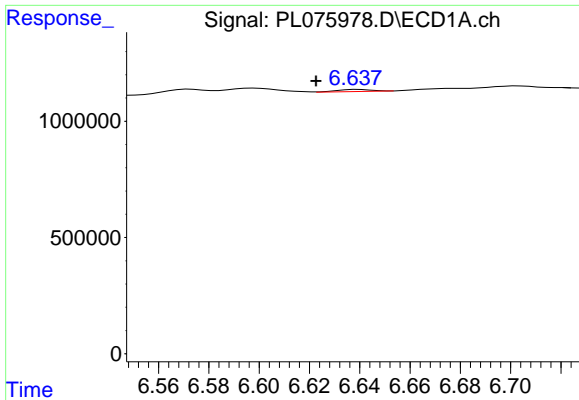
#2 alpha-BHC

R.T.: 0.000 min
 Exp R.T. : 6.225 min
 Response: 0
 Conc: N.D.



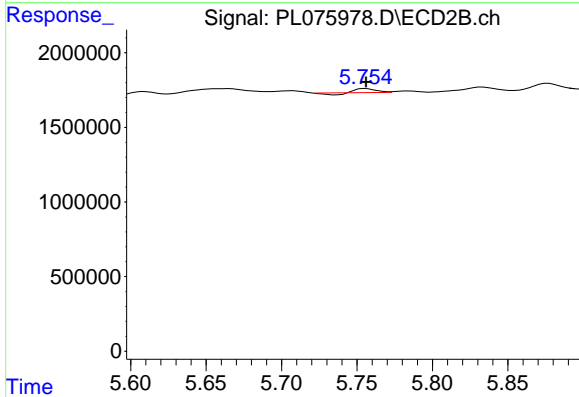
#2 alpha-BHC

R.T.: 5.351 min
 Delta R.T.: 0.016 min
 Response: 114773
 Conc: 0.05 ng/ml

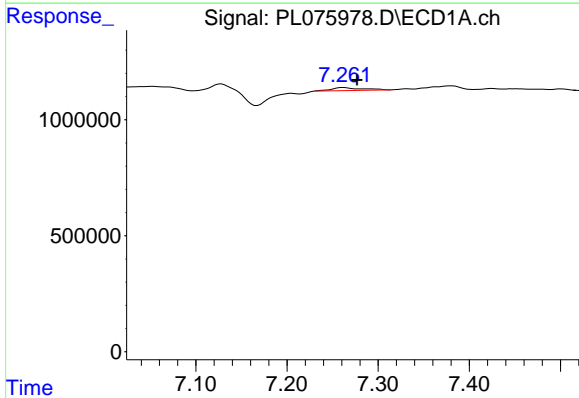


#3 gamma-BHC (Lindane)
 R.T.: 6.640 min
 Delta R.T.: 0.017 min
 Response: 86074
 Conc: 0.09 ng/ml

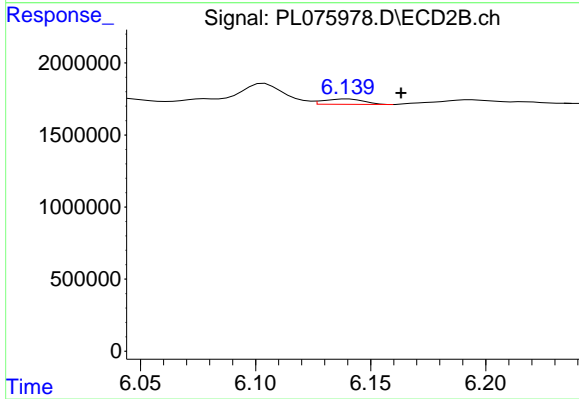
Instrument :
 ECD_L
 ClientSampleId :



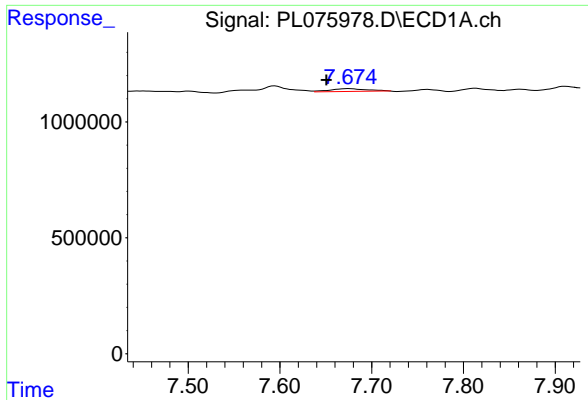
#3 gamma-BHC (Lindane)
 R.T.: 5.756 min
 Delta R.T.: 0.000 min
 Response: 157538
 Conc: 0.07 ng/ml



#4 Heptachlor
 R.T.: 7.262 min
 Delta R.T.: -0.015 min
 Response: 308945
 Conc: 0.34 ng/ml

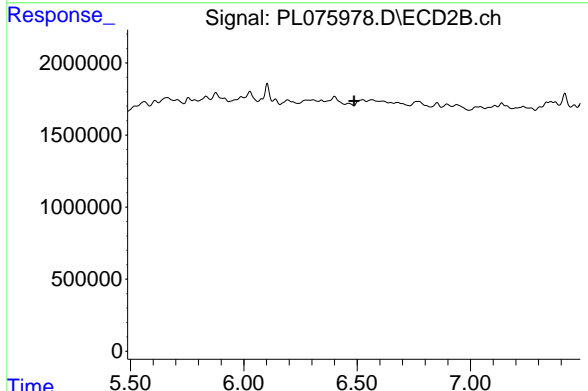


#4 Heptachlor
 R.T.: 6.140 min
 Delta R.T.: -0.023 min
 Response: 445989
 Conc: 0.20 ng/ml

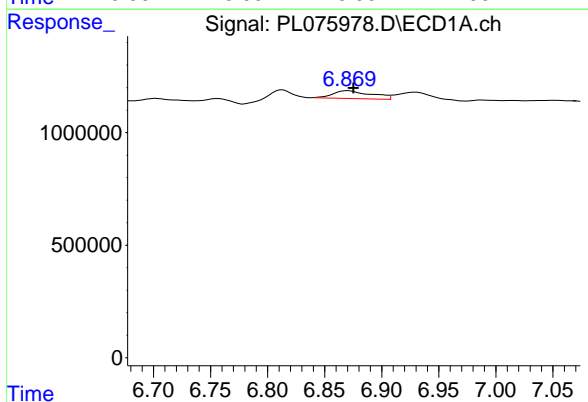


#5 Aldrin
 R.T.: 7.676 min
 Delta R.T.: 0.025 min
 Response: 334087
 Conc: 0.40 ng/ml

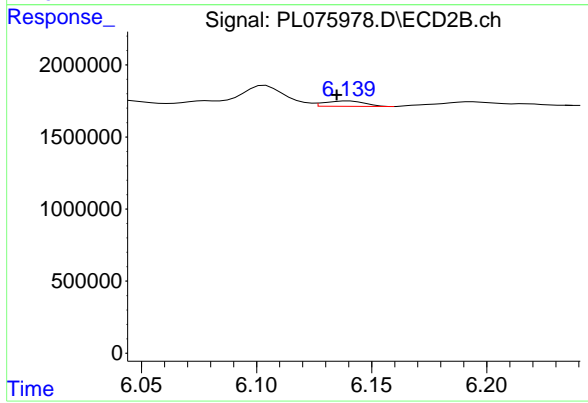
Instrument :
 ECD_L
 ClientSampleId :



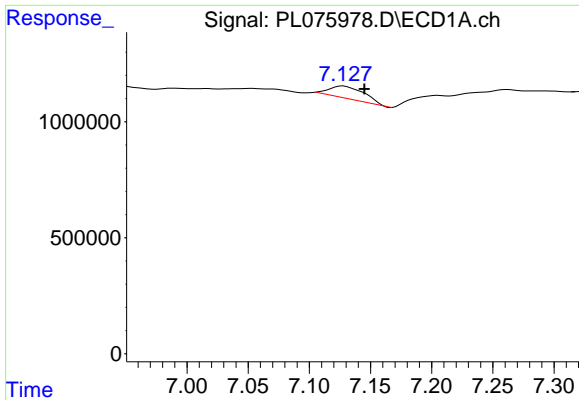
#5 Aldrin
 R.T.: 0.000 min
 Exp R.T. : 6.487 min
 Response: 0
 Conc: N.D.



#6 beta-BHC
 R.T.: 6.871 min
 Delta R.T.: -0.005 min
 Response: 814442
 Conc: 1.86 ng/ml



#6 beta-BHC
 R.T.: 6.140 min
 Delta R.T.: 0.005 min
 Response: 445989
 Conc: 0.43 ng/ml

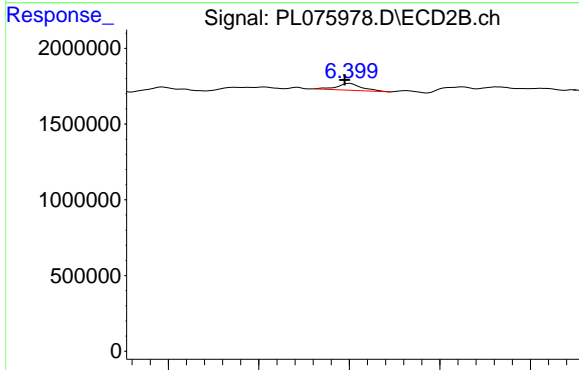


#7 delta-BHC

R.T.: 7.128 min
 Delta R.T.: -0.017 min
 Response: 1064949
 Conc: 1.36 ng/ml

Instrument :
 ECD_L
 ClientSampleId :

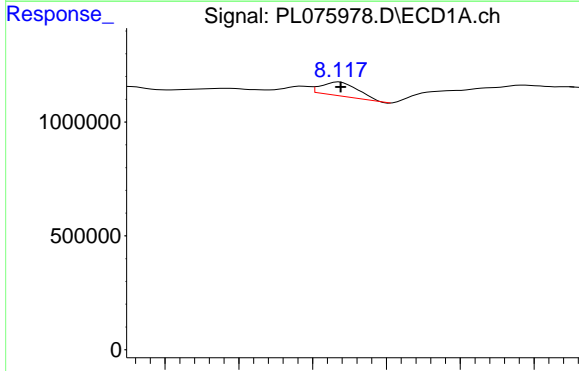
Time 7.00 7.05 7.10 7.15 7.20 7.25 7.30



#7 delta-BHC

R.T.: 6.400 min
 Delta R.T.: 0.005 min
 Response: 853836
 Conc: 0.38 ng/ml

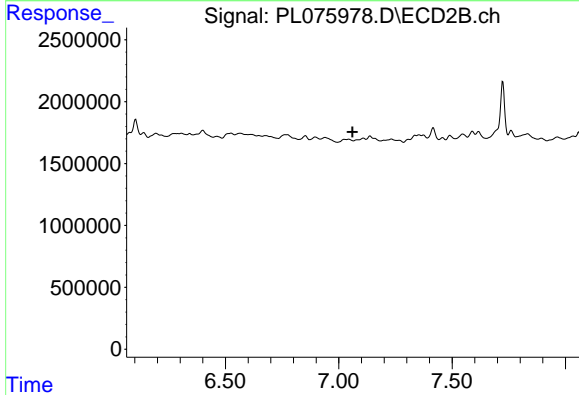
Time 6.20 6.30 6.40 6.50 6.60



#8 Heptachlor epoxide

R.T.: 8.118 min
 Delta R.T.: 0.000 min
 Response: 1036631
 Conc: 1.30 ng/ml

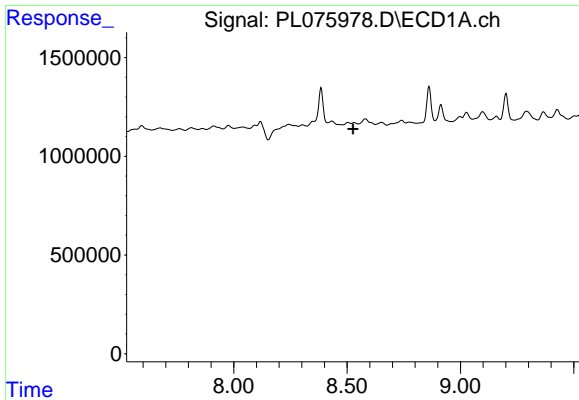
Time 8.00 8.05 8.10 8.15 8.20 8.25



#8 Heptachlor epoxide

R.T.: 0.000 min
 Exp R.T.: 7.061 min
 Response: 0
 Conc: N.D.

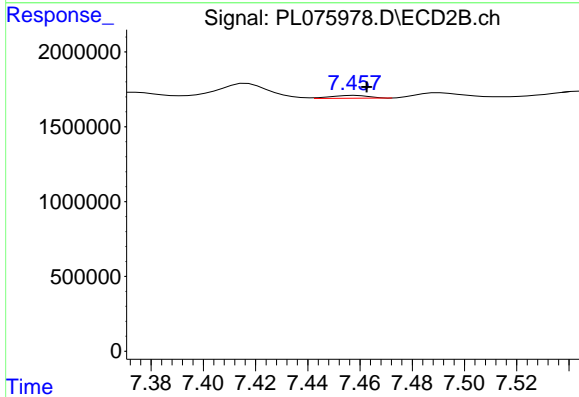
Time 6.50 7.00 7.50



#9 Endosulfan I

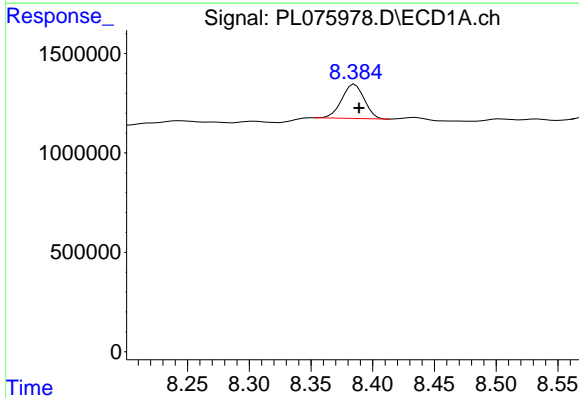
R.T.: 0.000 min
 Exp R.T.: 8.527 min
 Response: 0
 Conc: N.D.

Instrument :
 ECD_L
 ClientSampleId :



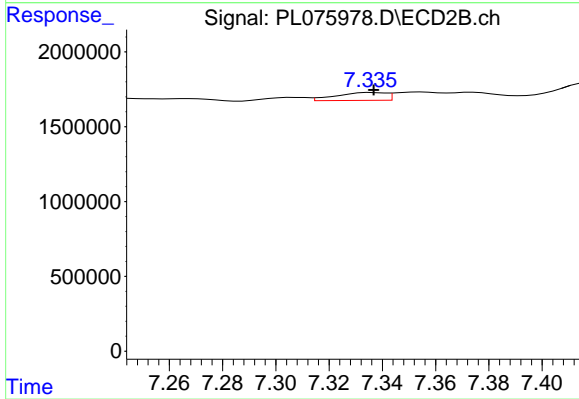
#9 Endosulfan I

R.T.: 7.458 min
 Delta R.T.: -0.004 min
 Response: 194174
 Conc: 0.11 ng/ml



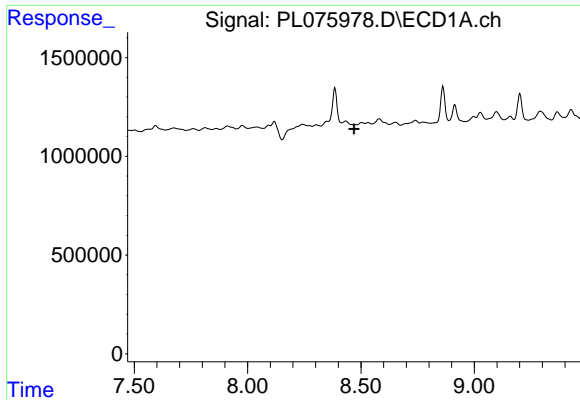
#10 gamma-Chlordane

R.T.: 8.385 min
 Delta R.T.: -0.003 min
 Response: 2180903
 Conc: 2.81 ng/ml



#10 gamma-Chlordane

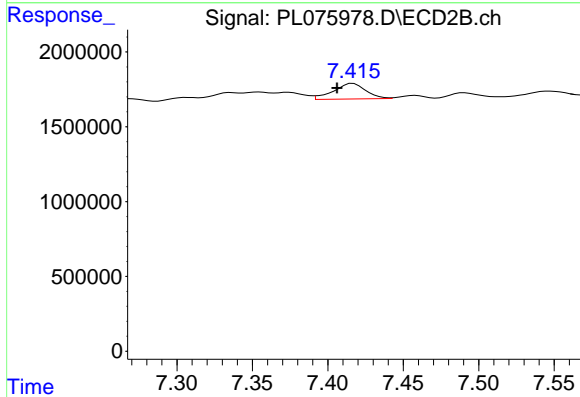
R.T.: 7.336 min
 Delta R.T.: 0.000 min
 Response: 678662
 Conc: 0.35 ng/ml



#11 alpha-Chlordane

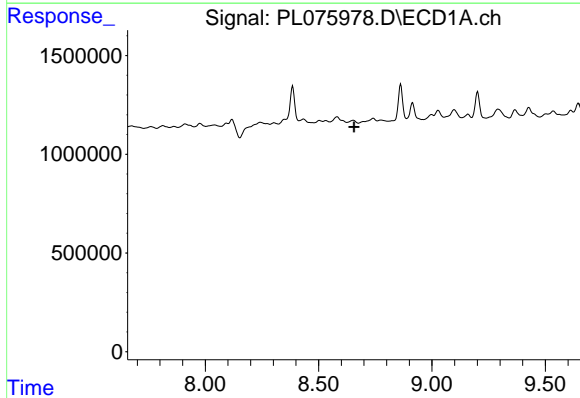
R.T.: 0.000 min
 Exp R.T. : 8.470 min
 Response: 0
 Conc: N.D.

Instrument :
 ECD_L
 ClientSampleId :



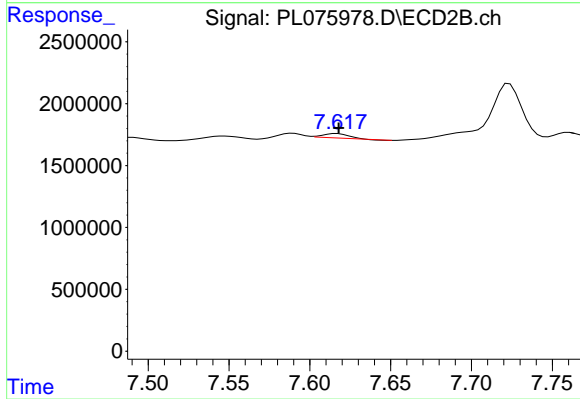
#11 alpha-Chlordane

R.T.: 7.417 min
 Delta R.T.: 0.011 min
 Response: 1554623
 Conc: 0.81 ng/ml



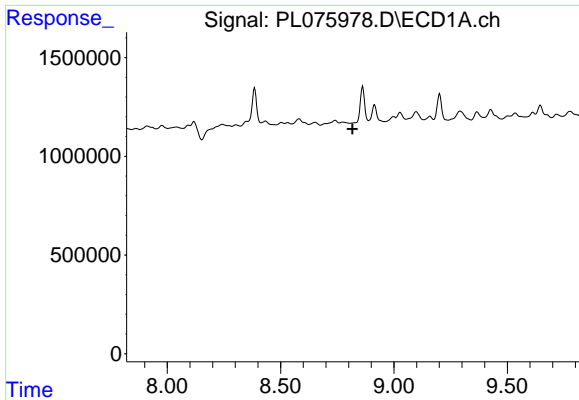
#12 4,4'-DDE

R.T.: 0.000 min
 Exp R.T. : 8.656 min
 Response: 0
 Conc: N.D.



#12 4,4'-DDE

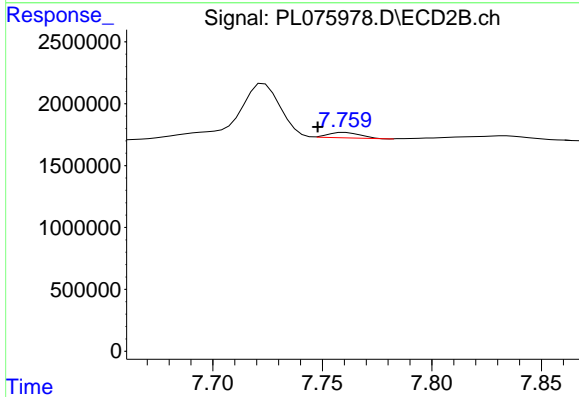
R.T.: 7.617 min
 Delta R.T.: -0.001 min
 Response: 384136
 Conc: 0.23 ng/ml



#13 Dieldrin

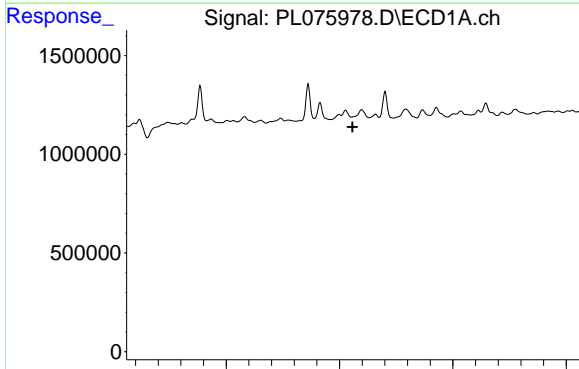
R.T.: 0.000 min
 Exp R.T.: 8.817 min
 Response: 0
 Conc: N.D.

Instrument :
 ECD_L
 ClientSampleId :



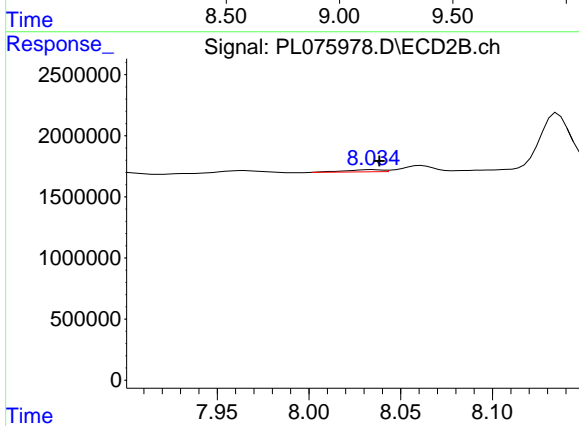
#13 Dieldrin

R.T.: 7.760 min
 Delta R.T.: 0.013 min
 Response: 445402
 Conc: 0.25 ng/ml



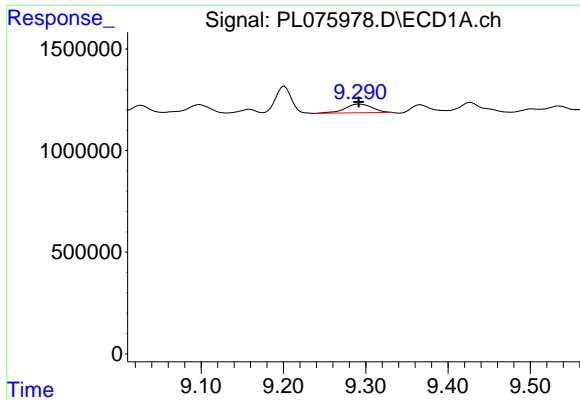
#14 Endrin

R.T.: 0.000 min
 Exp R.T.: 9.058 min
 Response: 0
 Conc: N.D.



#14 Endrin

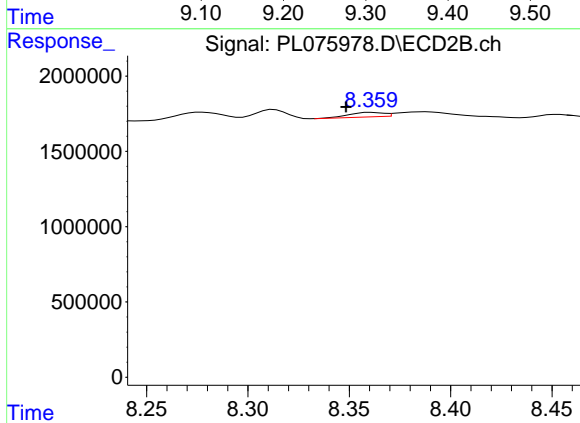
R.T.: 8.035 min
 Delta R.T.: -0.004 min
 Response: 248092
 Conc: 0.16 ng/ml



#15 Endosulfan II

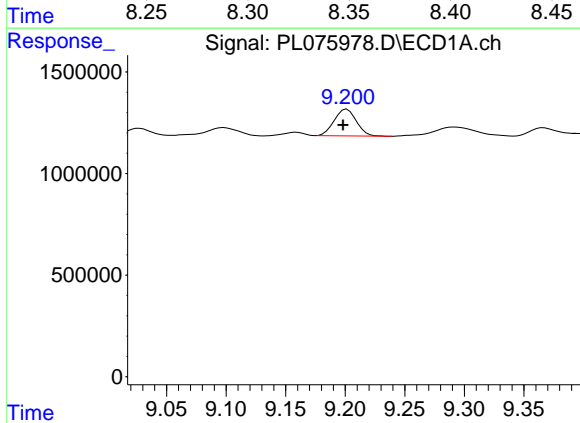
R.T.: 9.291 min
 Delta R.T.: 0.000 min
 Response: 967310
 Conc: 1.52 ng/ml

Instrument :
 ECD_L
 ClientSampleId :



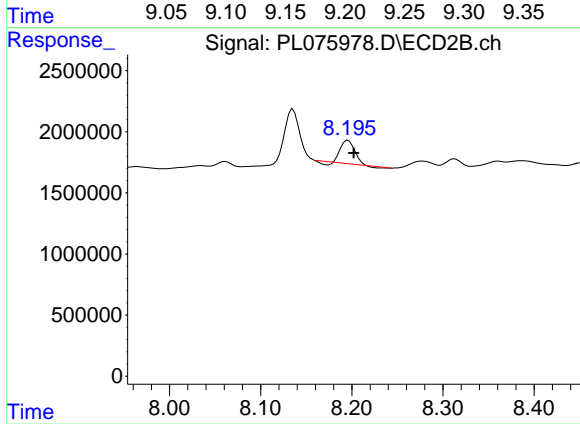
#15 Endosulfan II

R.T.: 8.361 min
 Delta R.T.: 0.013 min
 Response: 359482
 Conc: 0.24 ng/ml



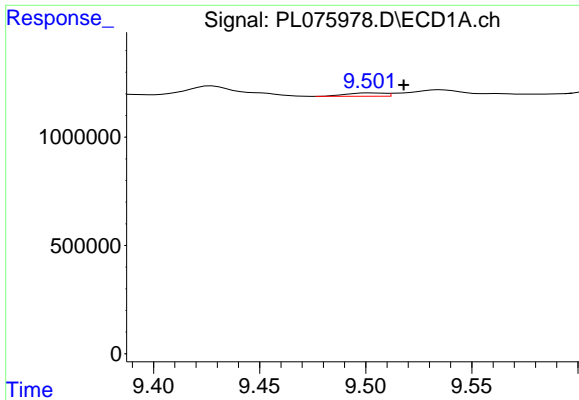
#16 4,4'-DDD

R.T.: 9.201 min
 Delta R.T.: 0.003 min
 Response: 1703722
 Conc: 3.00 ng/ml



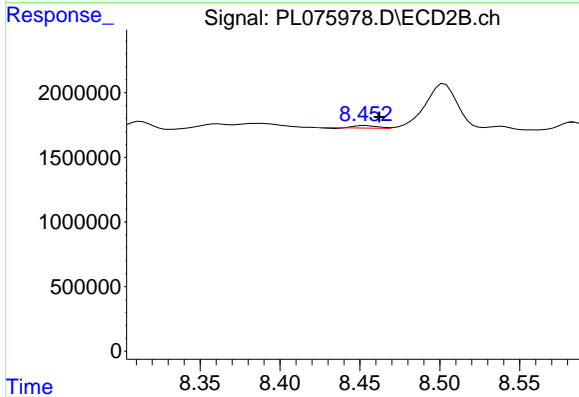
#16 4,4'-DDD

R.T.: 8.196 min
 Delta R.T.: -0.006 min
 Response: 1833851
 Conc: 1.32 ng/ml

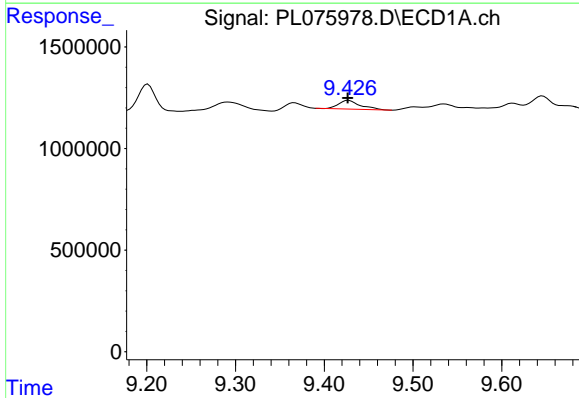


#17 4,4'-DDT
 R.T.: 9.502 min
 Delta R.T.: -0.016 min
 Response: 193119
 Conc: 0.32 ng/ml

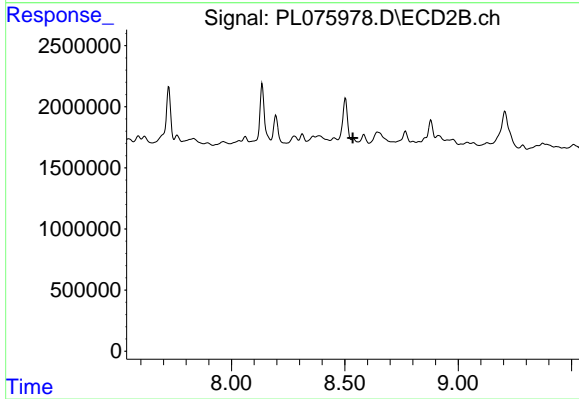
Instrument :
 ECD_L
 ClientSampleId :



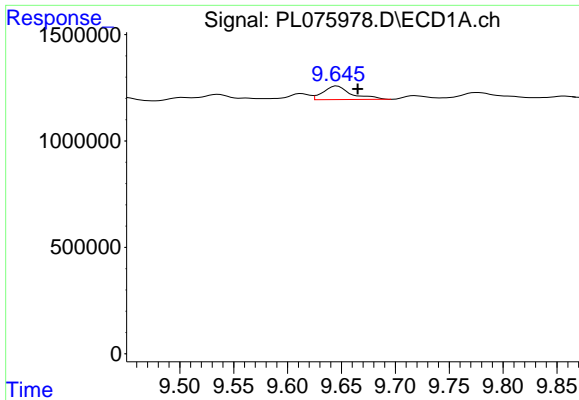
#17 4,4'-DDT
 R.T.: 8.453 min
 Delta R.T.: -0.009 min
 Response: 181186
 Conc: 0.12 ng/ml



#18 Endrin aldehyde
 R.T.: 9.428 min
 Delta R.T.: 0.001 min
 Response: 738385
 Conc: 1.43 ng/ml

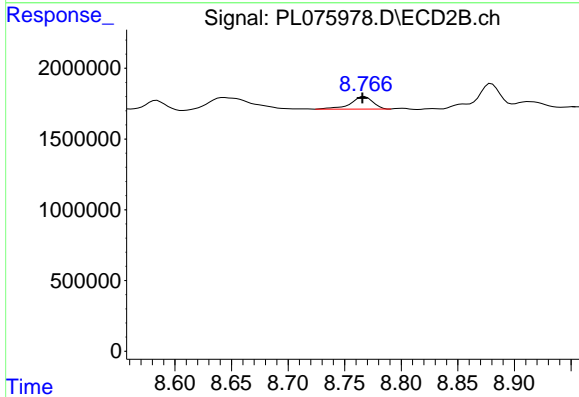


#18 Endrin aldehyde
 R.T.: 0.000 min
 Exp R.T. : 8.536 min
 Response: 0
 Conc: N.D.

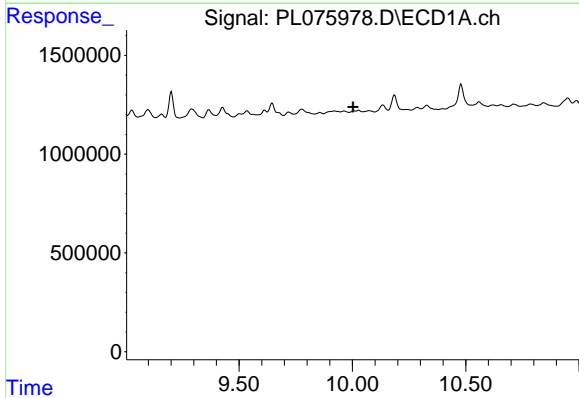


#19 Endosulfan Sulfate
 R.T.: 9.646 min
 Delta R.T.: -0.019 min
 Response: 1163157
 Conc: 1.81 ng/ml

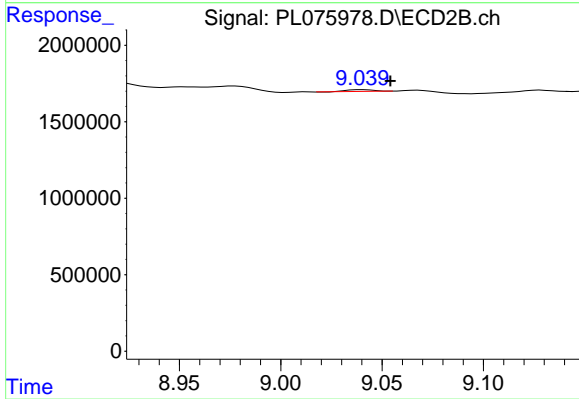
Instrument :
 ECD_L
 ClientSampleId :



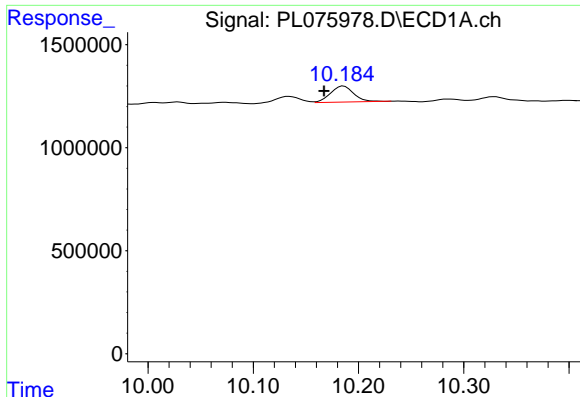
#19 Endosulfan Sulfate
 R.T.: 8.768 min
 Delta R.T.: 0.002 min
 Response: 1199134
 Conc: 0.78 ng/ml



#20 Methoxychlor
 R.T.: 0.000 min
 Exp R.T. : 10.003 min
 Response: 0
 Conc: N.D.



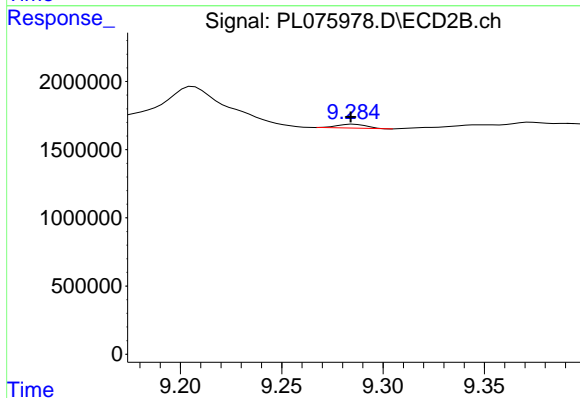
#20 Methoxychlor
 R.T.: 9.040 min
 Delta R.T.: -0.014 min
 Response: 102256
 Conc: 0.12 ng/ml



#21 Endrin ketone

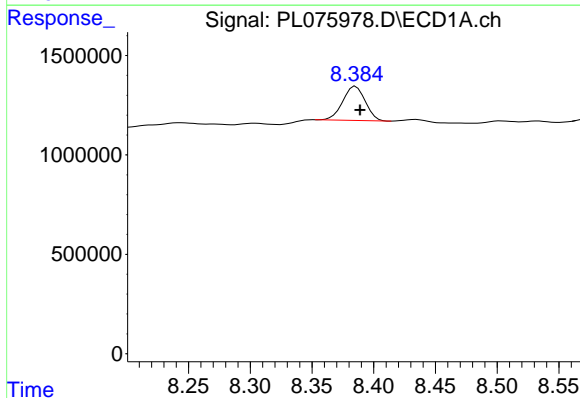
R.T.: 10.186 min
 Delta R.T.: 0.019 min
 Response: 1195022
 Conc: 1.66 ng/ml

Instrument :
 ECD_L
 ClientSampleId :



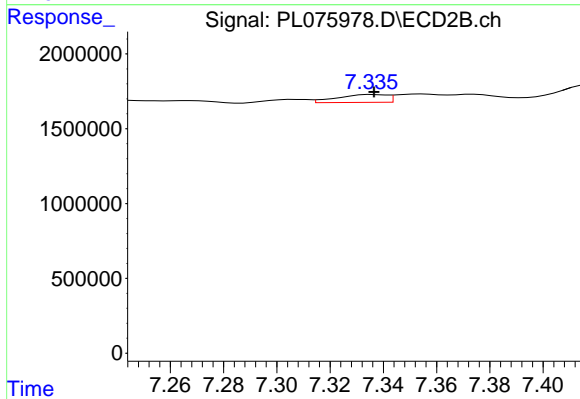
#21 Endrin ketone

R.T.: 9.285 min
 Delta R.T.: 0.001 min
 Response: 293601
 Conc: 0.18 ng/ml



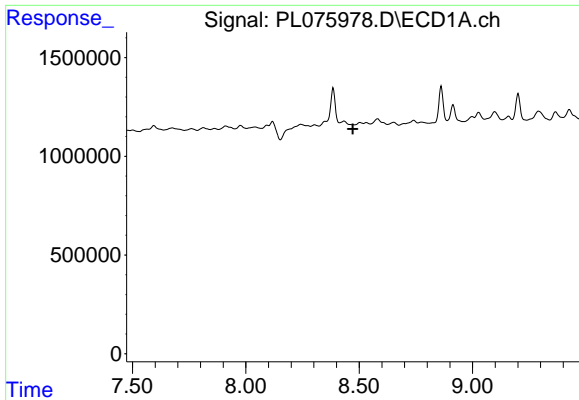
#25 Chlordane-3

R.T.: 8.385 min
 Delta R.T.: -0.004 min
 Response: 2180903
 Conc: 21.45 ng/ml



#25 Chlordane-3

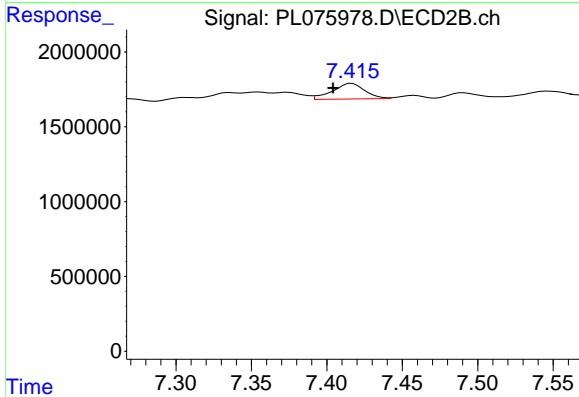
R.T.: 7.336 min
 Delta R.T.: 0.000 min
 Response: 678662
 Conc: 3.85 ng/ml



#26 Chlordane-4

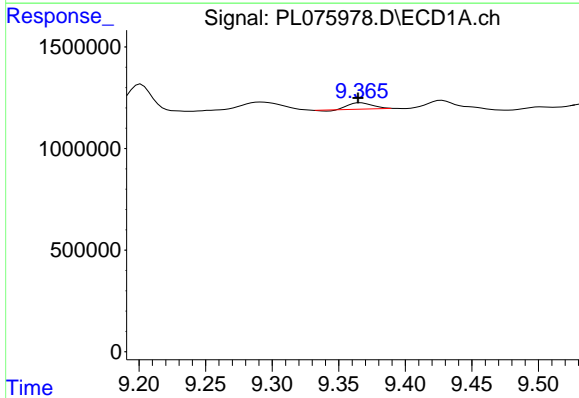
R.T.: 0.000 min
 Exp R.T.: 8.472 min
 Response: 0
 Conc: N.D.

Instrument :
 ECD_L
 ClientSampleId :



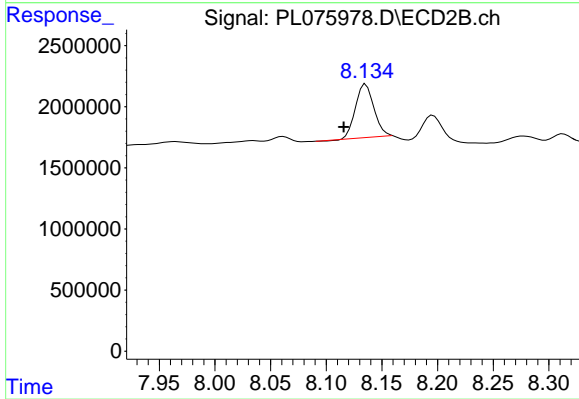
#26 Chlordane-4

R.T.: 7.417 min
 Delta R.T.: 0.013 min
 Response: 1554623
 Conc: 8.25 ng/ml



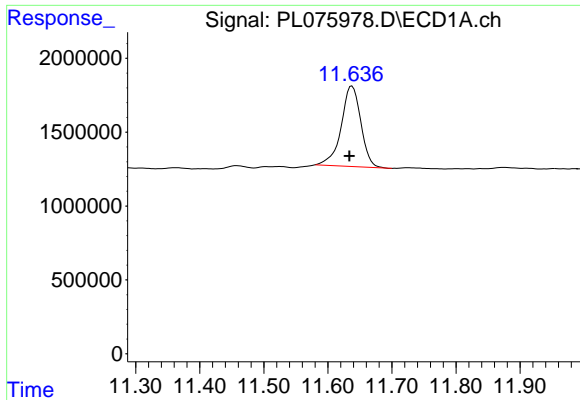
#27 Chlordane-5

R.T.: 9.367 min
 Delta R.T.: 0.002 min
 Response: 385745
 Conc: 18.08 ng/ml



#27 Chlordane-5

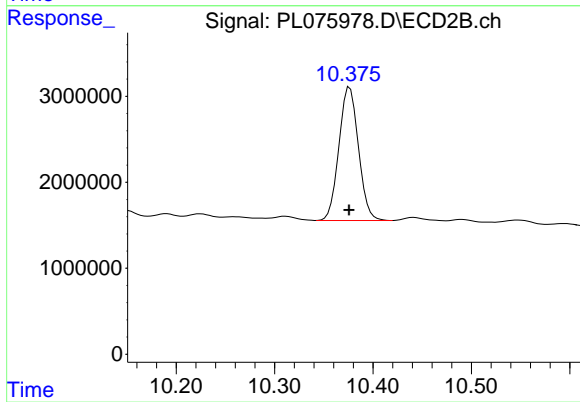
R.T.: 8.136 min
 Delta R.T.: 0.020 min
 Response: 5060454
 Conc: 110.60 ng/ml



#28 Decachlorobiphenyl

R.T.: 11.638 min
Delta R.T.: 0.004 min
Response: 11590639
Conc: 18.42 ng/ml

Instrument :
ECD_L
ClientSampleId :



#28 Decachlorobiphenyl

R.T.: 10.376 min
Delta R.T.: 0.000 min
Response: 21412424
Conc: 13.94 ng/ml