

Data Path : Z:\pestpcbsrv\HPCHEM1\ECD\_L\Data\PL062422\  
 Data File : PL076014.D  
 Signal(s) : Signal #1: ECD1A.ch Signal #2: ECD2B.ch  
 Acq On : 25 Jun 2022 03:01  
 Operator : AR\AJ  
 Sample : N3431-02MSD  
 Misc :  
 ALS Vial : 39 Sample Multiplier: 1

Instrument :  
 ECD\_L  
 ClientSampleId :  
 WC-14B-2-2MSD

Integration File signal 1: autoint1.e  
 Integration File signal 2: autoint2.e  
 Quant Time: Jun 25 05:50:03 2022  
 Quant Method : Z:\pestpcbsrv\HPCHEM1\ECD\_L\methods\PL062222.M  
 Quant Title : GC Extractables  
 QLast Update : Fri Jun 24 02:17:51 2022  
 Response via : Initial Calibration  
 Integrator: ChemStation

Volume Inj. : 1 µl  
 Signal #1 Phase : ZB-MR1 Signal #2 Phase: ZB-MR1  
 Signal #1 Info : 30M x 0.32mm x0.2 Signal #2 Info : 30M x 0.32mm x0.5µm

| Compound                    | RT#1   | RT#2   | Resp#1   | Resp#2   | ng/ml  | ng/ml  |
|-----------------------------|--------|--------|----------|----------|--------|--------|
| -----                       |        |        |          |          |        |        |
| System Monitoring Compounds |        |        |          |          |        |        |
| 1) SA Tetrachlo...          | 5.640  | 4.633  | 13436178 | 31893938 | 17.765 | 16.816 |
| 28) SA Decachlor...         | 11.633 | 10.373 | 12406539 | 26840732 | 19.716 | 17.476 |
| Target Compounds            |        |        |          |          |        |        |
| 2) A alpha-BHC              | 6.224  | 5.335  | 62566758 | 146.6E6  | 63.341 | 59.996 |
| 3) MA gamma-BHC...          | 6.622  | 5.755  | 58411090 | 135.5E6  | 63.095 | 58.630 |
| 4) MA Heptachlor            | 7.277  | 6.162  | 55577231 | 127.2E6  | 60.586 | 56.075 |
| 5) MB Aldrin                | 7.650  | 6.486  | 52532041 | 121.7E6  | 63.286 | 58.954 |
| 6) B beta-BHC               | 6.874  | 6.134  | 25609017 | 56194046 | 58.472 | 53.871 |
| 7) B delta-BHC              | 7.144  | 6.394  | 55194462 | 133.0E6  | 70.689 | 58.894 |
| 8) B Heptachlo...           | 8.118  | 7.059  | 48829210 | 111.6E6  | 61.327 | 58.158 |
| 9) A Endosulfan I           | 8.526  | 7.461  | 43919360 | 101.0E6  | 60.755 | 57.512 |
| 10) B gamma-Chl...          | 8.389  | 7.336  | 48401487 | 112.2E6  | 62.271 | 58.372 |
| 11) B alpha-Chl...          | 8.470  | 7.405  | 47640908 | 109.6E6  | 61.347 | 57.287 |
| 12) B 4,4'-DDE              | 8.656  | 7.616  | 42721848 | 99758260 | 63.207 | 58.773 |
| 13) MA Dieldrin             | 8.817  | 7.746  | 46838325 | 107.1E6  | 63.800 | 59.536 |
| 14) MA Endrin               | 9.058  | 8.036  | 40167360 | 96655751 | 64.422 | 63.602 |
| 15) B Endosulfa...          | 9.291  | 8.346  | 40169310 | 89378016 | 63.312 | 59.132 |
| 16) A 4,4'-DDD              | 9.198  | 8.200  | 36295970 | 82071510 | 64.011 | 59.172 |
| 17) MA 4,4'-DDT             | 9.517  | 8.460  | 36880549 | 80973571 | 60.414 | 54.749 |
| 18) B Endrin al...          | 9.426  | 8.534  | 32802002 | 70297560 | 63.505 | 58.885 |
| 19) B Endosulfa...          | 9.665  | 8.764  | 39557573 | 88268854 | 61.704 | 57.532 |
| 20) A Methoxychlor          | 10.003 | 9.052  | 20731884 | 45329783 | 60.441 | 53.230 |
| 21) B Endrin ke...          | 10.166 | 9.282  | 44214540 | 97037546 | 61.343 | 58.735 |
| 22) Mirex                   | 10.639 | 9.468  | 32749338 | 73450108 | 60.889 | 54.888 |
| -----                       |        |        |          |          |        |        |

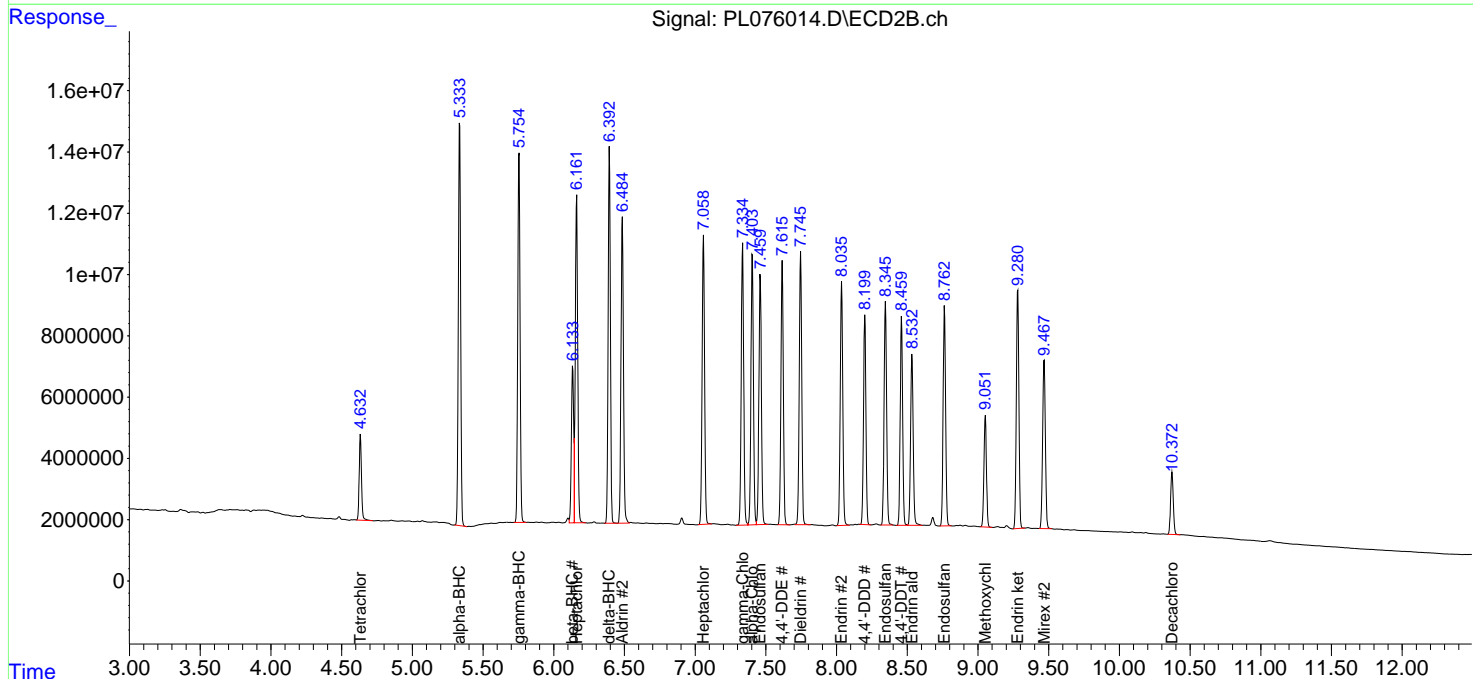
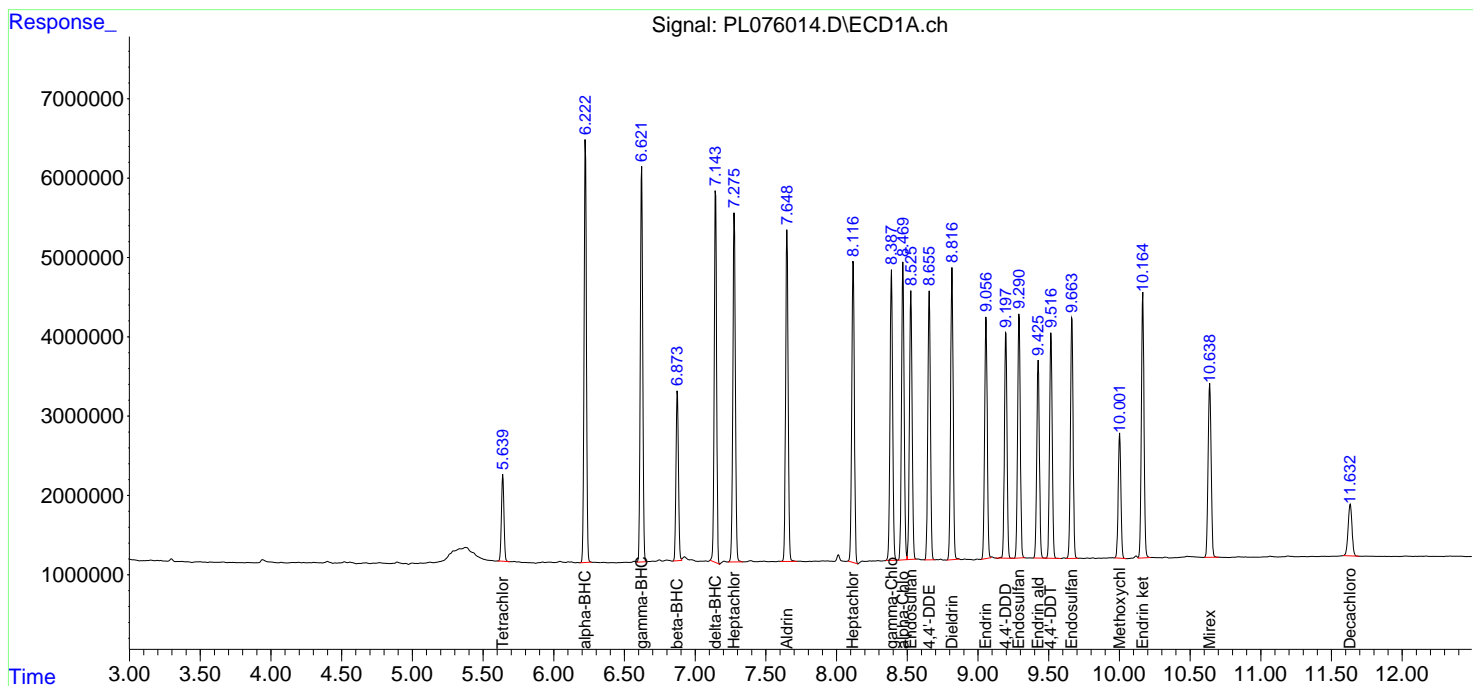
(f)=RT Delta > 1/2 Window (#)=Amounts differ by > 25% (m)=manual int.

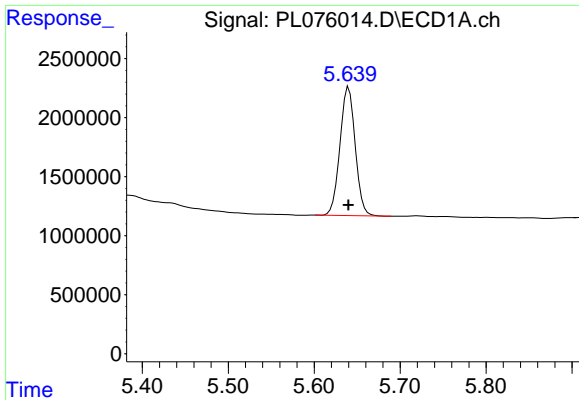
Data Path : Z:\pestpcbsrv\HPCHEM1\ECD\_L\Data\PL062422\  
 Data File : PL076014.D  
 Signal(s) : Signal #1: ECD1A.ch Signal #2: ECD2B.ch  
 Acq On : 25 Jun 2022 03:01  
 Operator : AR\AJ  
 Sample : N3431-02MSD  
 Misc :  
 ALS Vial : 39 Sample Multiplier: 1

Instrument :  
 ECD\_L  
 ClientSampleId :  
 WC-14B-2-2MSD

Integration File signal 1: autoint1.e  
 Integration File signal 2: autoint2.e  
 Quant Time: Jun 25 05:50:03 2022  
 Quant Method : Z:\pestpcbsrv\HPCHEM1\ECD\_L\methods\PL062222.M  
 Quant Title : GC Extractables  
 QLast Update : Fri Jun 24 02:17:51 2022  
 Response via : Initial Calibration  
 Integrator: ChemStation

Volume Inj. : 1 µl  
 Signal #1 Phase : ZB-MR2 Signal #2 Phase: ZB-MR1  
 Signal #1 Info : 30M x 0.32mm x0.2 Signal #2 Info : 30M x 0.32mm x0.5µm

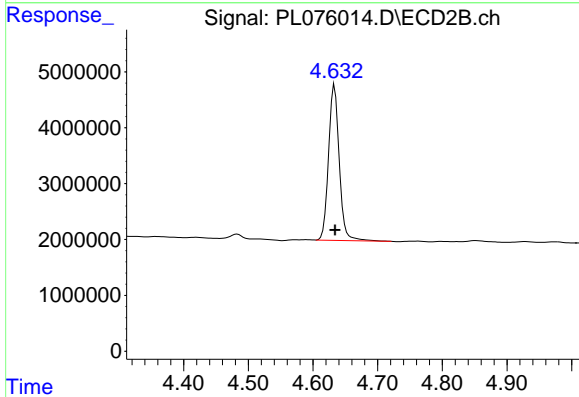




#1 Tetrachloro-m-xylene

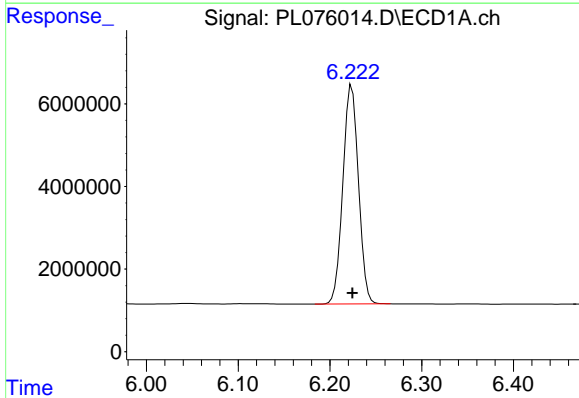
R.T.: 5.640 min  
 Delta R.T.: 0.000 min  
 Response: 13436178  
 Conc: 17.77 ng/ml

Instrument :  
 ECD\_L  
 ClientSampleId :  
 WC-14B-2-2MSD



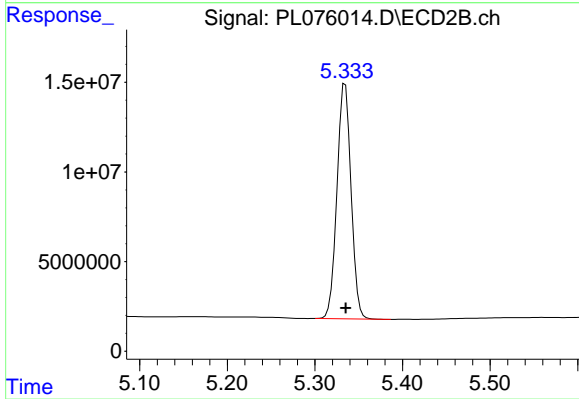
#1 Tetrachloro-m-xylene

R.T.: 4.633 min  
 Delta R.T.: 0.000 min  
 Response: 31893938  
 Conc: 16.82 ng/ml



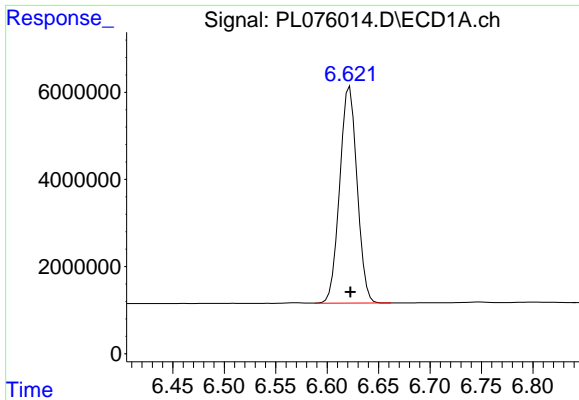
#2 alpha-BHC

R.T.: 6.224 min  
 Delta R.T.: 0.000 min  
 Response: 62566758  
 Conc: 63.34 ng/ml



#2 alpha-BHC

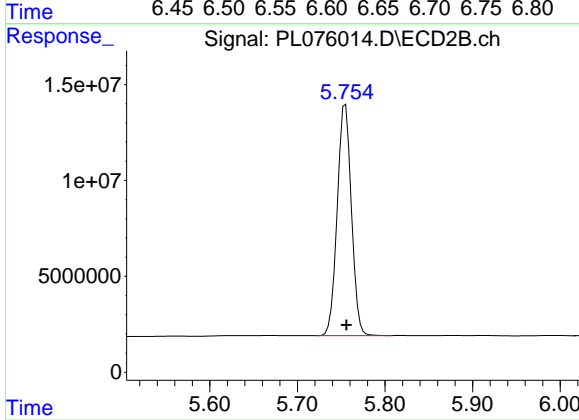
R.T.: 5.335 min  
 Delta R.T.: 0.000 min  
 Response: 146644824  
 Conc: 60.00 ng/ml



#3 gamma-BHC (Lindane)

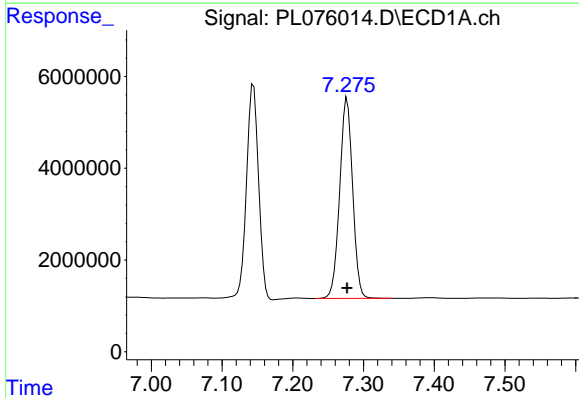
R.T.: 6.622 min  
 Delta R.T.: 0.000 min  
 Response: 58411090  
 Conc: 63.09 ng/ml

Instrument :  
 ECD\_L  
 ClientSampleId :  
 WC-14B-2-2MSD



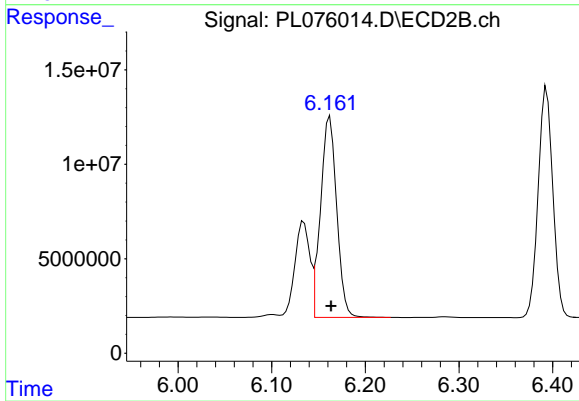
#3 gamma-BHC (Lindane)

R.T.: 5.755 min  
 Delta R.T.: -0.001 min  
 Response: 135542402  
 Conc: 58.63 ng/ml



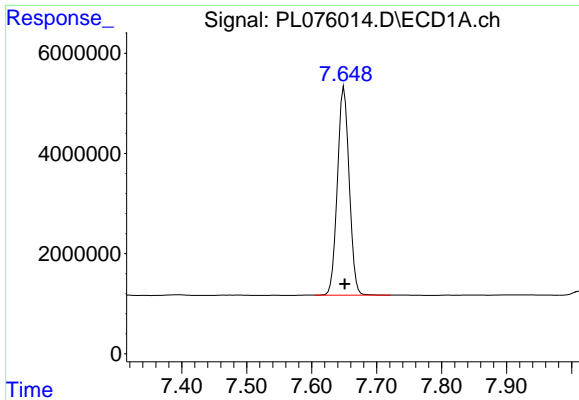
#4 Heptachlor

R.T.: 7.277 min  
 Delta R.T.: 0.000 min  
 Response: 55577231  
 Conc: 60.59 ng/ml



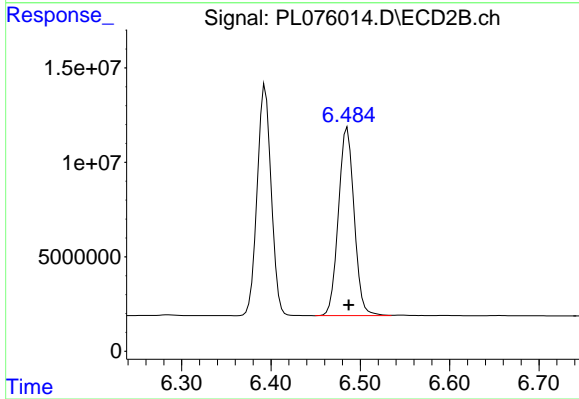
#4 Heptachlor

R.T.: 6.162 min  
 Delta R.T.: -0.001 min  
 Response: 127219180  
 Conc: 56.08 ng/ml

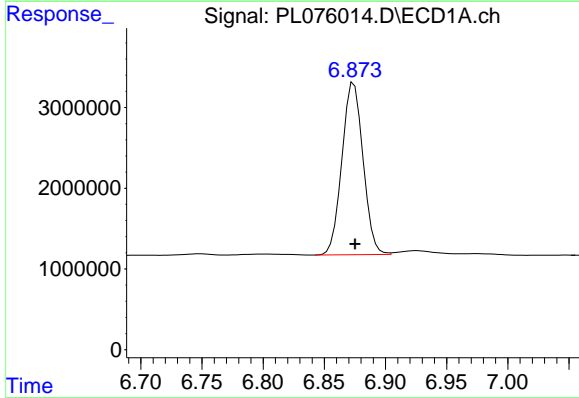


#5 Aldrin  
 R.T.: 7.650 min  
 Delta R.T.: -0.001 min  
 Response: 52532041  
 Conc: 63.29 ng/ml

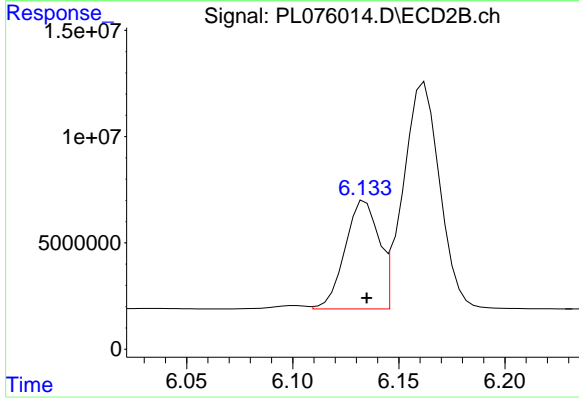
Instrument :  
 ECD\_L  
 ClientSampleId :  
 WC-14B-2-2MSD



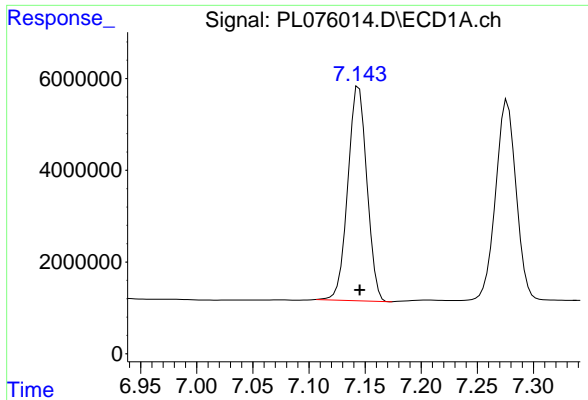
#5 Aldrin  
 R.T.: 6.486 min  
 Delta R.T.: -0.001 min  
 Response: 121715306  
 Conc: 58.95 ng/ml



#6 beta-BHC  
 R.T.: 6.874 min  
 Delta R.T.: 0.000 min  
 Response: 25609017  
 Conc: 58.47 ng/ml



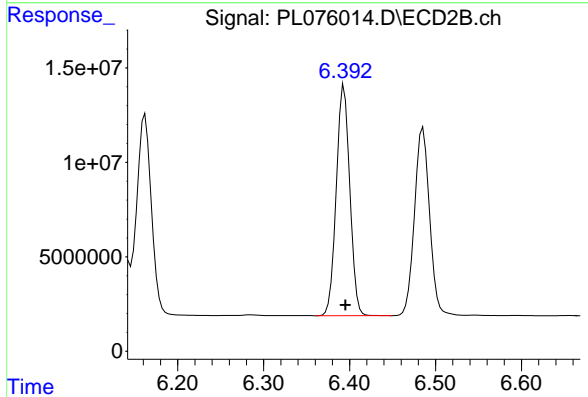
#6 beta-BHC  
 R.T.: 6.134 min  
 Delta R.T.: 0.000 min  
 Response: 56194046  
 Conc: 53.87 ng/ml



#7 delta-BHC

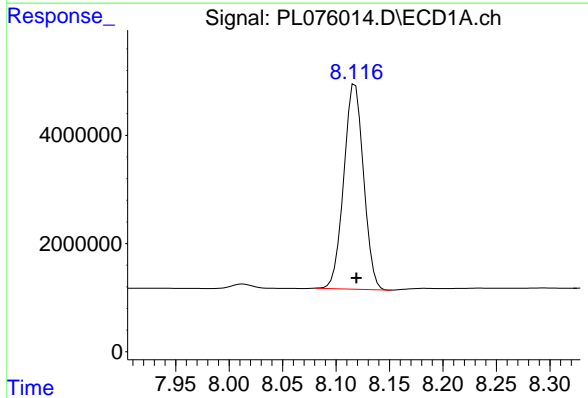
R.T.: 7.144 min  
 Delta R.T.: 0.000 min  
 Response: 55194462  
 Conc: 70.69 ng/ml

Instrument :  
 ECD\_L  
 ClientSampleId :  
 WC-14B-2-2MSD



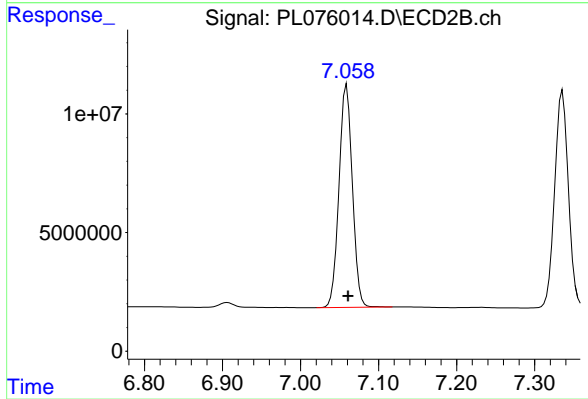
#7 delta-BHC

R.T.: 6.394 min  
 Delta R.T.: -0.001 min  
 Response: 133034790  
 Conc: 58.89 ng/ml



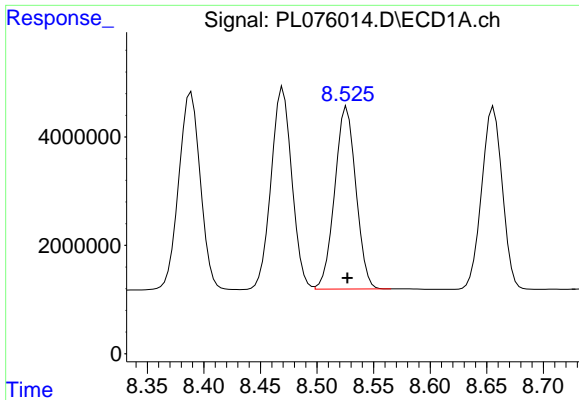
#8 Heptachlor epoxide

R.T.: 8.118 min  
 Delta R.T.: -0.001 min  
 Response: 48829210  
 Conc: 61.33 ng/ml



#8 Heptachlor epoxide

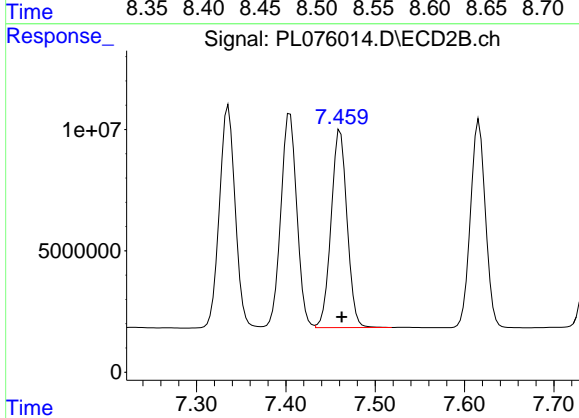
R.T.: 7.059 min  
 Delta R.T.: -0.002 min  
 Response: 111571206  
 Conc: 58.16 ng/ml



#9 Endosulfan I

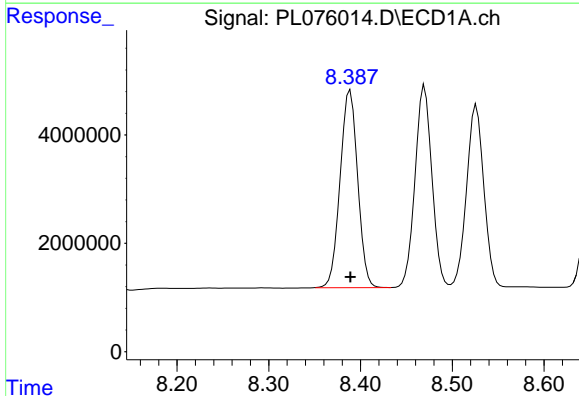
R.T.: 8.526 min  
 Delta R.T.: 0.000 min  
 Response: 43919360  
 Conc: 60.76 ng/ml

Instrument :  
 ECD\_L  
 ClientSampleId :  
 WC-14B-2-2MSD



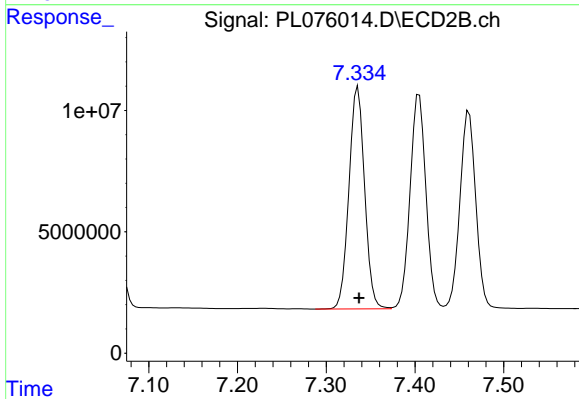
#9 Endosulfan I

R.T.: 7.461 min  
 Delta R.T.: -0.002 min  
 Response: 100980577  
 Conc: 57.51 ng/ml



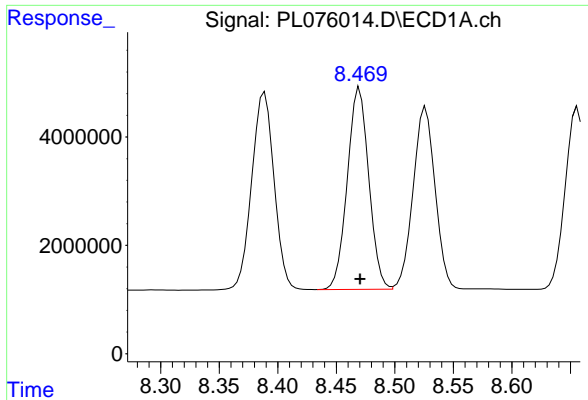
#10 gamma-Chlordane

R.T.: 8.389 min  
 Delta R.T.: 0.000 min  
 Response: 48401487  
 Conc: 62.27 ng/ml



#10 gamma-Chlordane

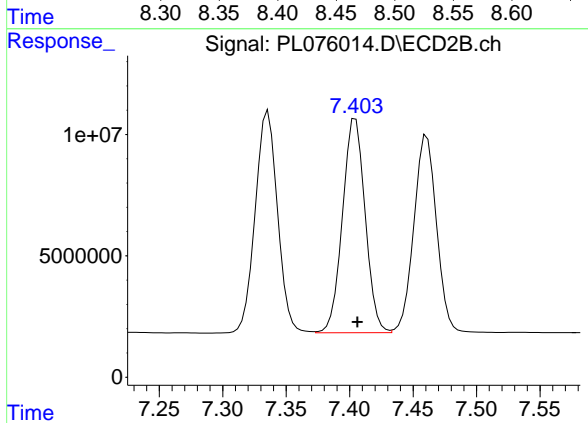
R.T.: 7.336 min  
 Delta R.T.: -0.001 min  
 Response: 112207084  
 Conc: 58.37 ng/ml



#11 alpha-Chlordane

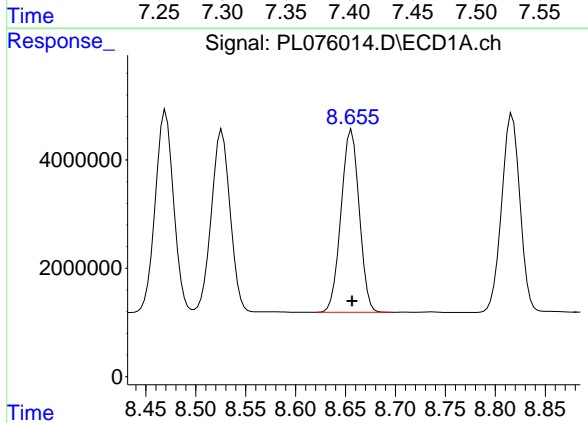
R.T.: 8.470 min  
 Delta R.T.: 0.000 min  
 Response: 47640908  
 Conc: 61.35 ng/ml

Instrument :  
 ECD\_L  
 ClientSampleId :  
 WC-14B-2-2MSD



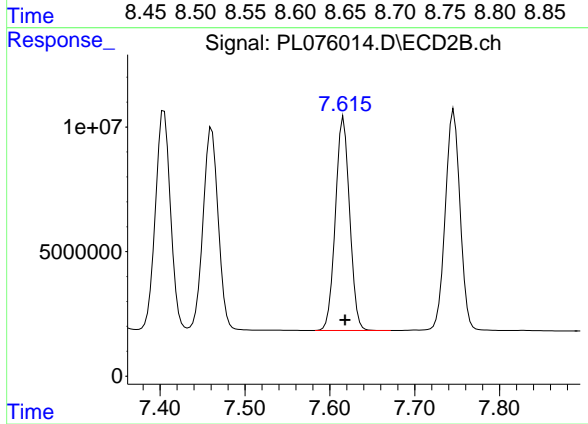
#11 alpha-Chlordane

R.T.: 7.405 min  
 Delta R.T.: -0.001 min  
 Response: 109646334  
 Conc: 57.29 ng/ml



#12 4,4'-DDE

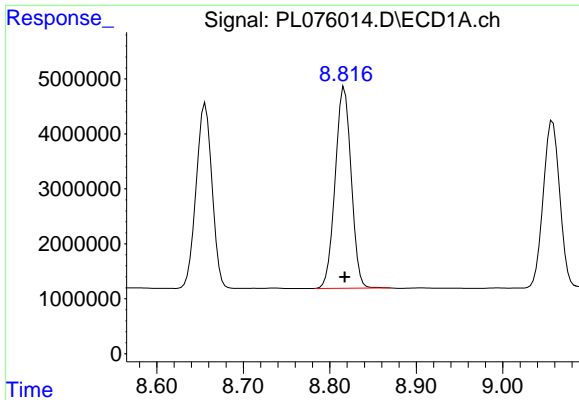
R.T.: 8.656 min  
 Delta R.T.: 0.000 min  
 Response: 42721848  
 Conc: 63.21 ng/ml



#12 4,4'-DDE

R.T.: 7.616 min  
 Delta R.T.: -0.002 min  
 Response: 99758260  
 Conc: 58.77 ng/ml

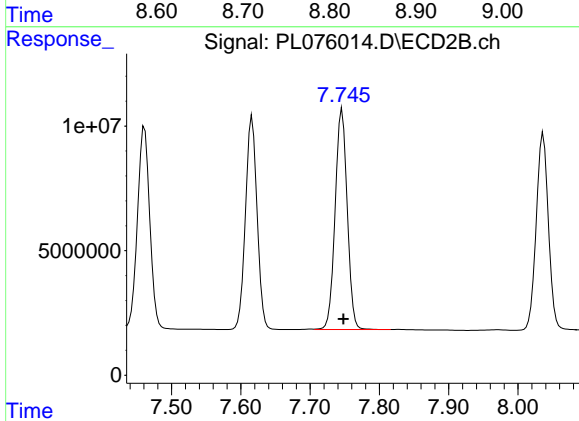




#13 Dieldrin

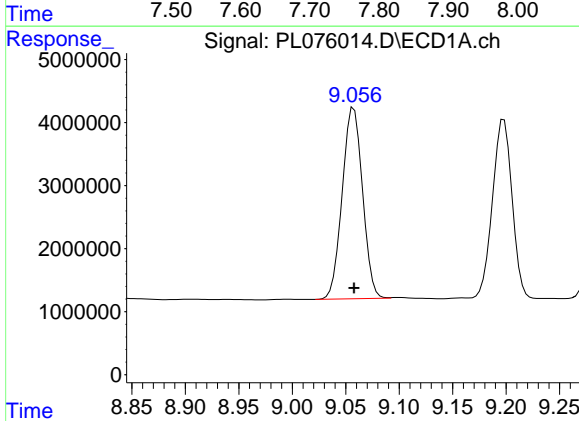
R.T.: 8.817 min  
 Delta R.T.: 0.000 min  
 Response: 46838325  
 Conc: 63.80 ng/ml

Instrument :  
 ECD\_L  
 ClientSampleId :  
 WC-14B-2-2MSD



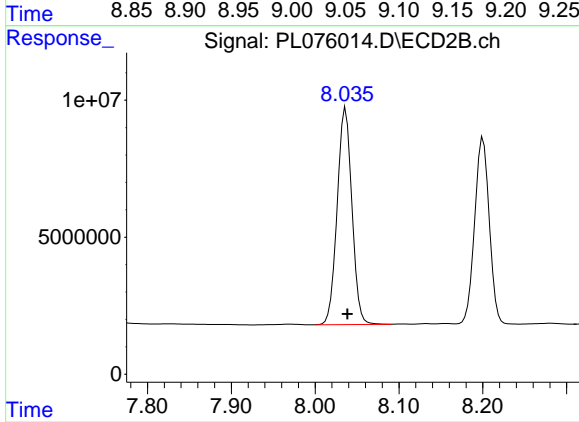
#13 Dieldrin

R.T.: 7.746 min  
 Delta R.T.: -0.002 min  
 Response: 107133359  
 Conc: 59.54 ng/ml



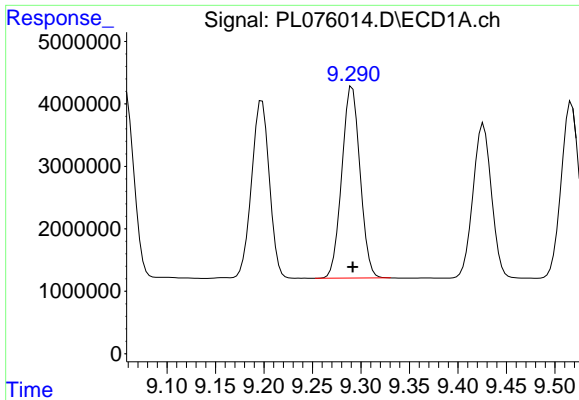
#14 Endrin

R.T.: 9.058 min  
 Delta R.T.: 0.000 min  
 Response: 40167360  
 Conc: 64.42 ng/ml



#14 Endrin

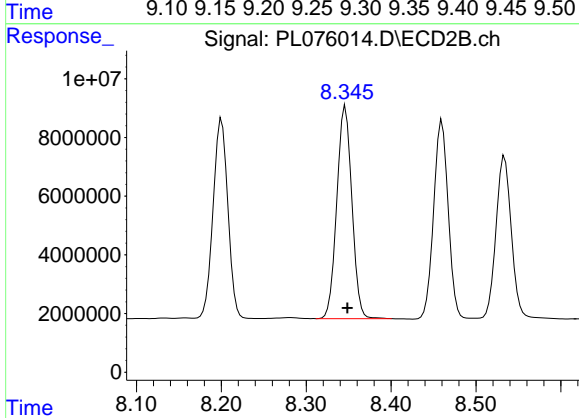
R.T.: 8.036 min  
 Delta R.T.: -0.002 min  
 Response: 96655751  
 Conc: 63.60 ng/ml



#15 Endosulfan II

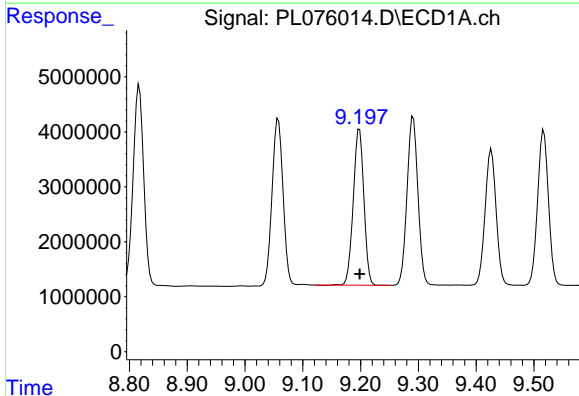
R.T.: 9.291 min  
 Delta R.T.: 0.000 min  
 Response: 40169310  
 Conc: 63.31 ng/ml

Instrument :  
 ECD\_L  
 ClientSampleId :  
 WC-14B-2-2MSD



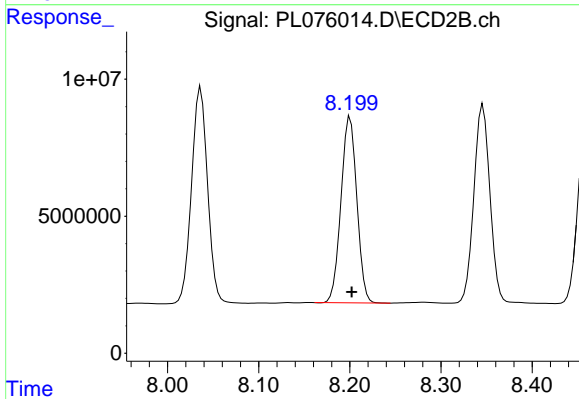
#15 Endosulfan II

R.T.: 8.346 min  
 Delta R.T.: -0.002 min  
 Response: 89378016  
 Conc: 59.13 ng/ml



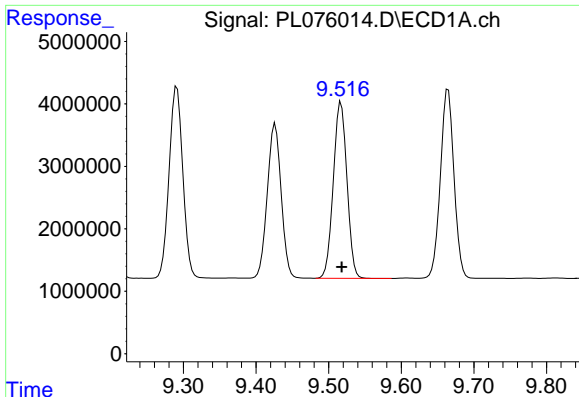
#16 4,4'-DDD

R.T.: 9.198 min  
 Delta R.T.: 0.000 min  
 Response: 36295970  
 Conc: 64.01 ng/ml



#16 4,4'-DDD

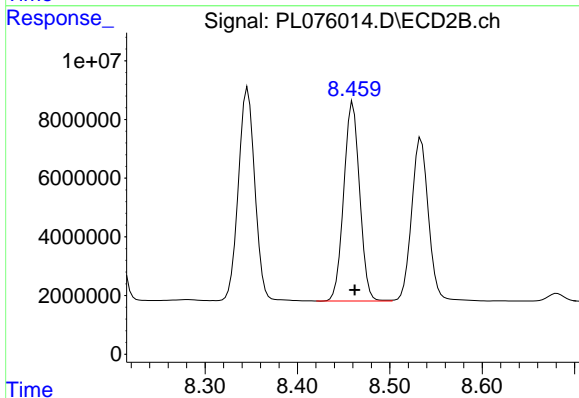
R.T.: 8.200 min  
 Delta R.T.: -0.002 min  
 Response: 82071510  
 Conc: 59.17 ng/ml



#17 4,4'-DDT

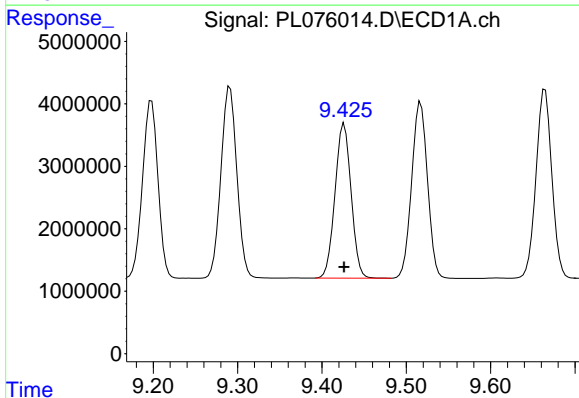
R.T.: 9.517 min  
 Delta R.T.: 0.000 min  
 Response: 36880549  
 Conc: 60.41 ng/ml

Instrument :  
 ECD\_L  
 ClientSampleId :  
 WC-14B-2-2MSD



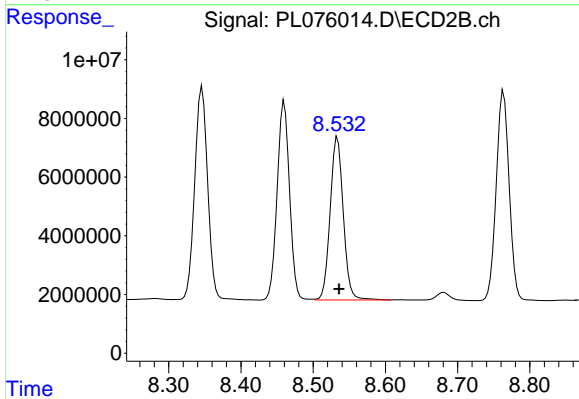
#17 4,4'-DDT

R.T.: 8.460 min  
 Delta R.T.: -0.002 min  
 Response: 80973571  
 Conc: 54.75 ng/ml



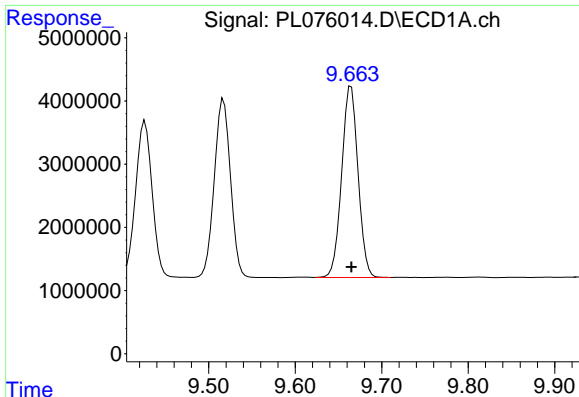
#18 Endrin aldehyde

R.T.: 9.426 min  
 Delta R.T.: 0.000 min  
 Response: 32802002  
 Conc: 63.51 ng/ml



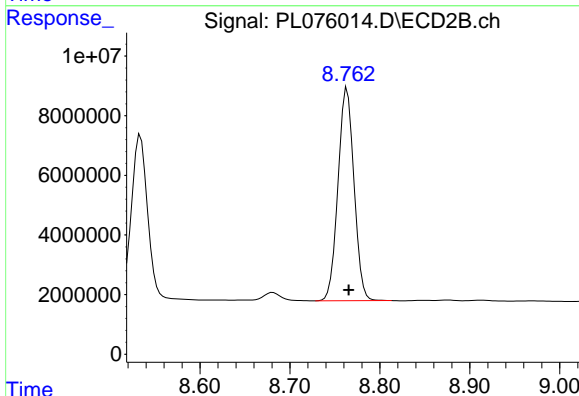
#18 Endrin aldehyde

R.T.: 8.534 min  
 Delta R.T.: -0.002 min  
 Response: 70297560  
 Conc: 58.89 ng/ml

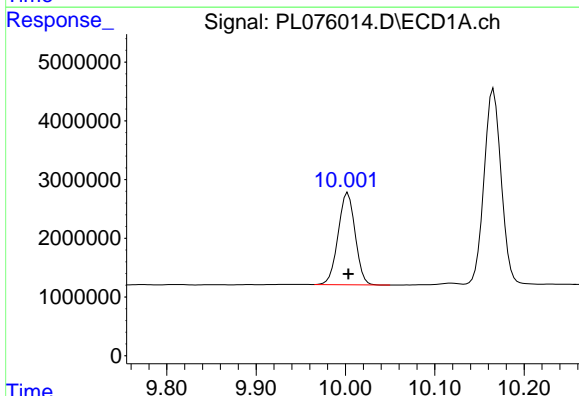


#19 Endosulfan Sulfate  
 R.T.: 9.665 min  
 Delta R.T.: 0.000 min  
 Response: 39557573  
 Conc: 61.70 ng/ml

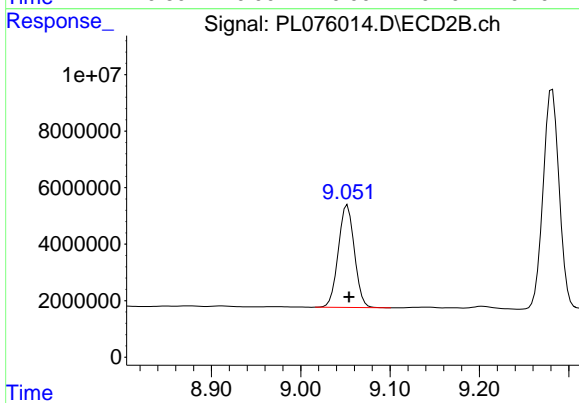
Instrument :  
 ECD\_L  
 ClientSampleId :  
 WC-14B-2-2MSD



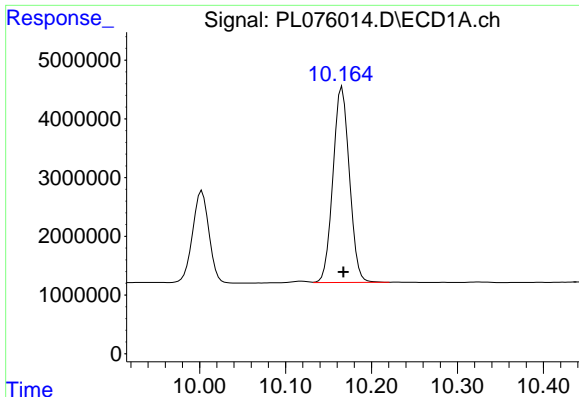
#19 Endosulfan Sulfate  
 R.T.: 8.764 min  
 Delta R.T.: -0.002 min  
 Response: 88268854  
 Conc: 57.53 ng/ml



#20 Methoxychlor  
 R.T.: 10.003 min  
 Delta R.T.: 0.000 min  
 Response: 20731884  
 Conc: 60.44 ng/ml



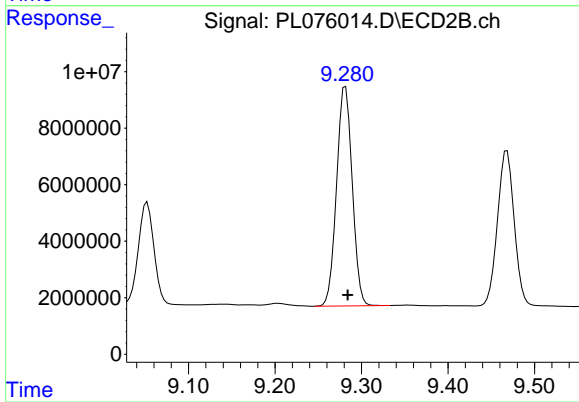
#20 Methoxychlor  
 R.T.: 9.052 min  
 Delta R.T.: -0.002 min  
 Response: 45329783  
 Conc: 53.23 ng/ml



#21 Endrin ketone

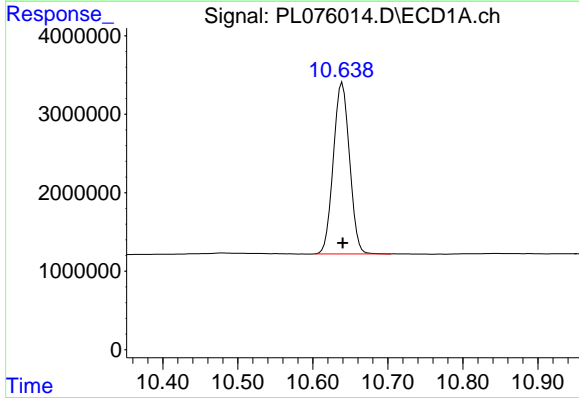
R.T.: 10.166 min  
 Delta R.T.: -0.002 min  
 Response: 44214540  
 Conc: 61.34 ng/ml

Instrument :  
 ECD\_L  
 ClientSampleId :  
 WC-14B-2-2MSD



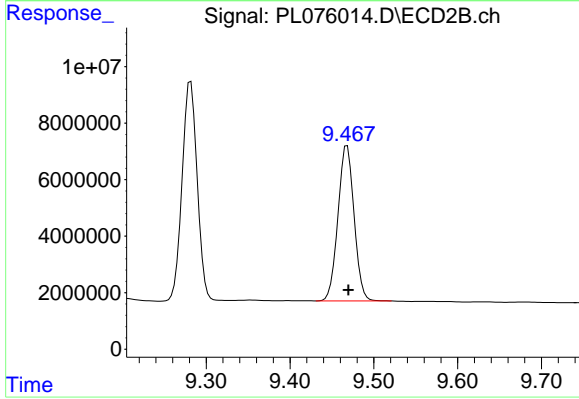
#21 Endrin ketone

R.T.: 9.282 min  
 Delta R.T.: -0.002 min  
 Response: 97037546  
 Conc: 58.74 ng/ml



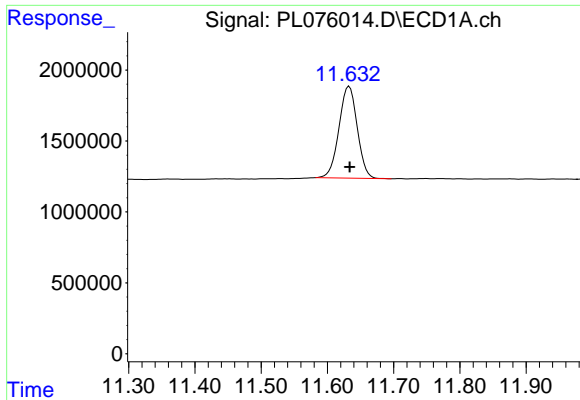
#22 Mirex

R.T.: 10.639 min  
 Delta R.T.: 0.000 min  
 Response: 32749338  
 Conc: 60.89 ng/ml



#22 Mirex

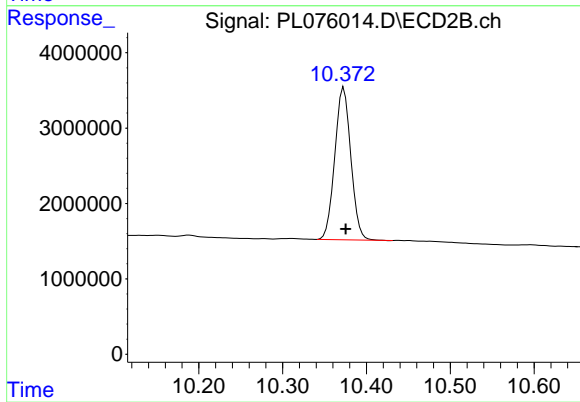
R.T.: 9.468 min  
 Delta R.T.: -0.001 min  
 Response: 73450108  
 Conc: 54.89 ng/ml



#28 Decachlorobiphenyl

R.T.: 11.633 min  
Delta R.T.: 0.000 min  
Response: 12406539  
Conc: 19.72 ng/ml

Instrument :  
ECD\_L  
ClientSampleId :  
WC-14B-2-2MSD



#28 Decachlorobiphenyl

R.T.: 10.373 min  
Delta R.T.: -0.002 min  
Response: 26840732  
Conc: 17.48 ng/ml