

Data Path : Z:\pestpcbsrv\HPCHEM1\ECD\_L\Data\PL062519\  
 Data File : PL049843.D  
 Signal(s) : Signal #1: ECD1A.ch Signal #2: ECD2B.ch  
 Acq On : 25 Jun 2019 21:00  
 Operator : SM\AJ  
 Sample : K3164-09  
 Misc :  
 ALS Vial : 31 Sample Multiplier: 1

Instrument :  
 ECD\_L  
 ClientSampleId :  
 BAT-B08

Integration File signal 1: autoint1.e  
 Integration File signal 2: autoint2.e  
 Quant Time: Jun 26 01:14:23 2019  
 Quant Method : Z:\pestpcbsrv\HPCHEM1\ECD\_L\methods\PL062019.M  
 Quant Title : GC Extractables  
 QLast Update : Fri Jun 21 02:23:20 2019  
 Response via : Initial Calibration  
 Integrator: ChemStation

Volume Inj. : 1 µl  
 Signal #1 Phase : ZB-MR2 Signal #2 Phase: ZB-MR1  
 Signal #1 Info : 30M x 0.32mm x0.2 Signal #2 Info : 30M x 0.32mm x0.5µm

Compound	RT#1	RT#2	Resp#1	Resp#2	ng/ml	ng/ml
-----						
System Monitoring Compounds						
1) SA Tetrachlo...	3.323	3.934	113.8E6	31428793	10.092	10.265
28) SA Decachlor...	7.988	8.969	155.7E6	46541226	12.251	13.864

Target Compounds

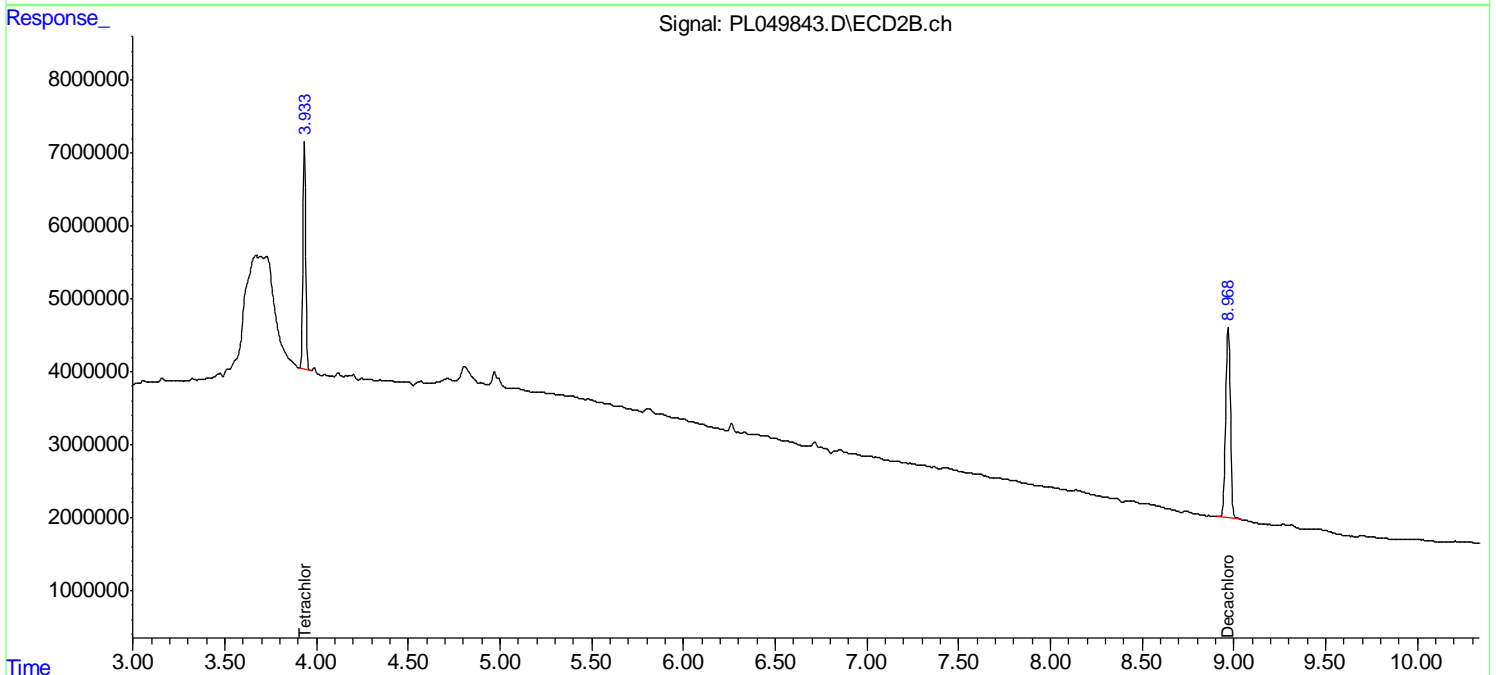
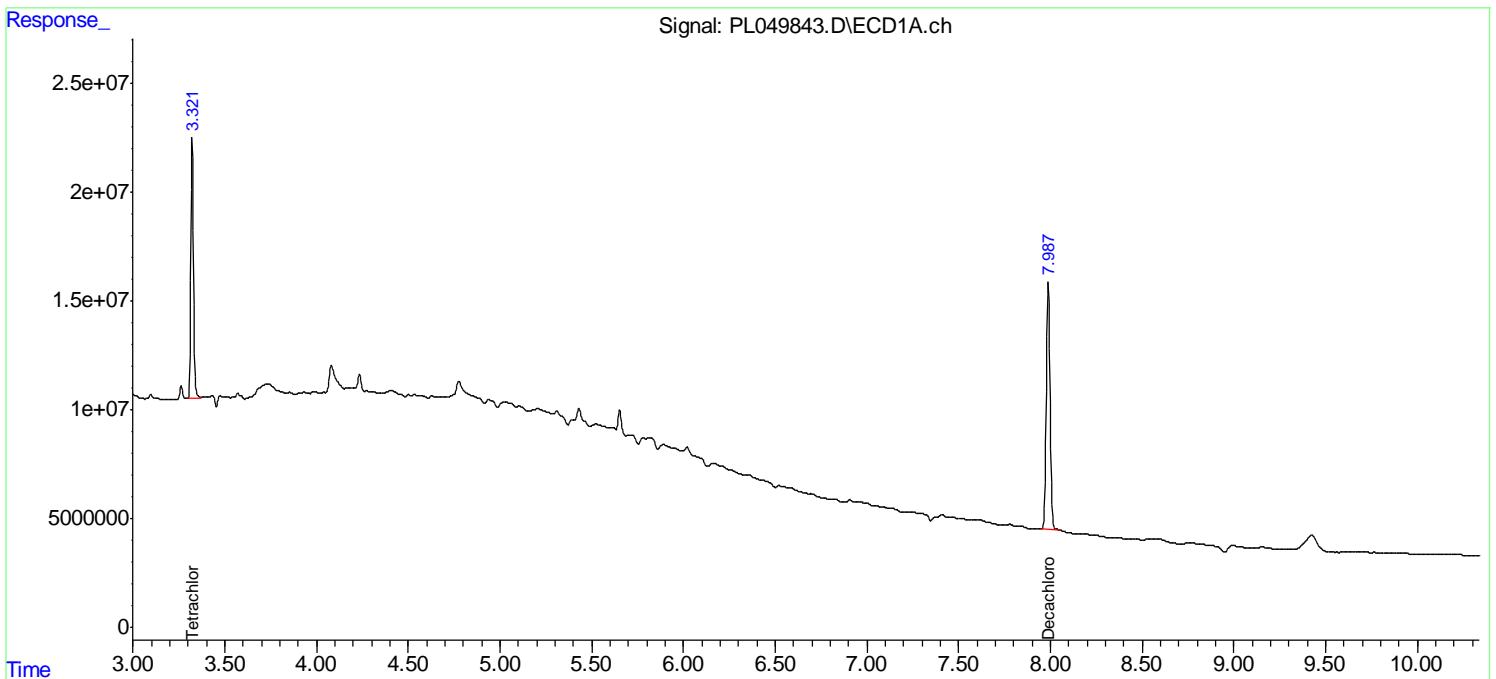
(f)=RT Delta > 1/2 Window (#)=Amounts differ by > 25% (m)=manual int.

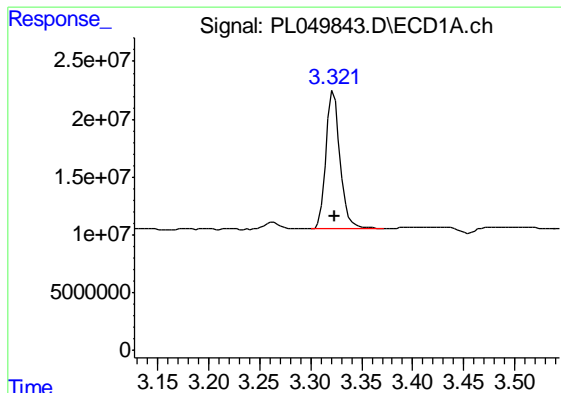
Data Path : Z:\pestpcbsrv\HPCHEM1\ECD\_L\Data\PL062519\  
 Data File : PL049843.D  
 Signal(s) : Signal #1: ECD1A.ch Signal #2: ECD2B.ch  
 Acq On : 25 Jun 2019 21:00  
 Operator : SM\AJ  
 Sample : K3164-09  
 Misc :  
 ALS Vial : 31 Sample Multiplier: 1

Instrument :  
 ECD\_L  
 ClientSampleId :  
 BAT-B08

Integration File signal 1: autoint1.e  
 Integration File signal 2: autoint2.e  
 Quant Time: Jun 26 01:14:23 2019  
 Quant Method : Z:\pestpcbsrv\HPCHEM1\ECD\_L\methods\PL062019.M  
 Quant Title : GC Extractables  
 QLast Update : Fri Jun 21 02:23:20 2019  
 Response via : Initial Calibration  
 Integrator: ChemStation

Volume Inj. : 1 µl  
 Signal #1 Phase : ZB-MR2 Signal #2 Phase: ZB-MR1  
 Signal #1 Info : 30M x 0.32mm x0.2 Signal #2 Info : 30M x 0.32mm x0.5µm

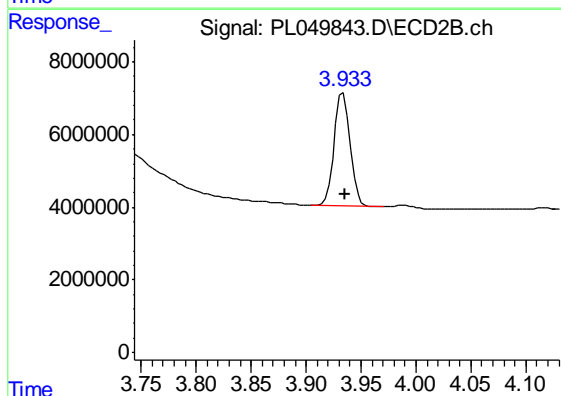




#1 Tetrachloro-m-xylene

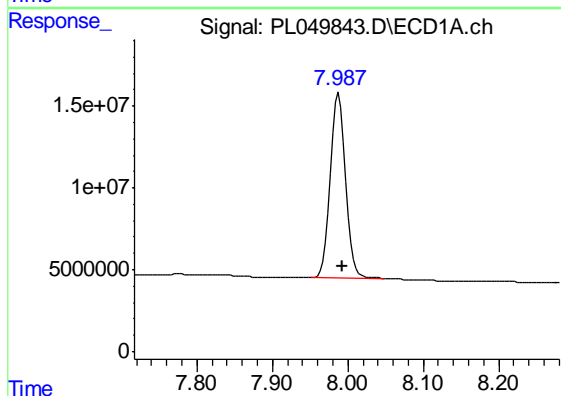
R.T.: 3.323 min  
 Delta R.T.: -0.001 min  
 Response: 113810849  
 Conc: 10.09 ng/ml

Instrument :  
 ECD\_L  
 ClientSampleId :  
 BAT-B08



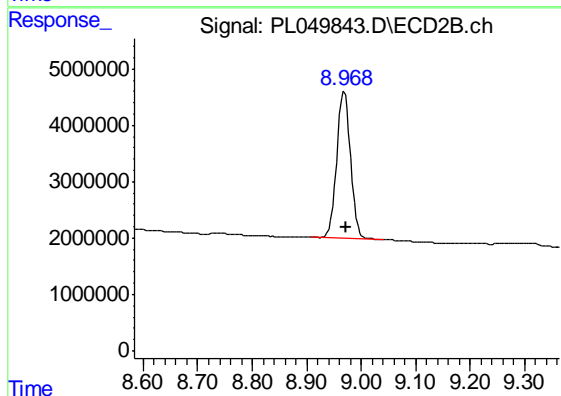
#1 Tetrachloro-m-xylene

R.T.: 3.934 min  
 Delta R.T.: -0.001 min  
 Response: 31428793  
 Conc: 10.26 ng/ml



#28 Decachlorobiphenyl

R.T.: 7.988 min  
 Delta R.T.: -0.004 min  
 Response: 155672367  
 Conc: 12.25 ng/ml



#28 Decachlorobiphenyl

R.T.: 8.969 min  
 Delta R.T.: -0.004 min  
 Response: 46541226  
 Conc: 13.86 ng/ml