

Data Path : Z:\pestpcbsrv\HPCHEM1\ECD_L\Data\PL062521\
 Data File : PL067818.D
 Signal(s) : Signal #1: ECD1A.ch Signal #2: ECD2B.ch
 Acq On : 25 Jun 2021 20:43
 Operator : AR\AJ
 Sample : M2829-01
 Misc :
 ALS Vial : 26 Sample Multiplier: 1

Instrument :
 ECD_L
 ClientSampleId :
 15B-STOCKPILE-1

Manual Integrations
 APPROVED

Ankita
 6/28/2021 9:29:21 AM

Integration File signal 1: autoint1.e
 Integration File signal 2: autoint2.e
 Quant Time: Jun 28 06:33:39 2021
 Quant Method : Z:\pestpcbsrv\HPCHEM1\ECD_L\methods\PL061021.M
 Quant Title : GC Extractables
 QLast Update : Fri Jun 11 02:00:12 2021
 Response via : Initial Calibration
 Integrator: ChemStation

Volume Inj. : 1 µl
 Signal #1 Phase : ZB-MR2 Signal #2 Phase: ZB-MR1
 Signal #1 Info : 30M x 0.32mm x0.2 Signal #2 Info : 30M x 0.32mm x0.5µm

Compound	RT#1	RT#2	Resp#1	Resp#2	ng/ml	ng/ml

System Monitoring Compounds						
1) SA Tetrachlo...	4.476	5.526	5485264	9786657	9.977	10.381
28) SA Decachlor...	10.215	11.419	9317692	14030632	13.148	14.086
Target Compounds						
10) B gamma-Chl...	7.178	8.254	6517685	16866929	8.990	16.706 #
11) B alpha-Chl...	7.245	8.336	16181755	42876342	22.103	42.468 #
12) B 4,4'-DDE	7.465	8.523	30636143	40784185	46.048	45.019
13) MA Dieldrin	7.596	8.673	552386	475542	0.788m	0.524m#
16) A 4,4'-DDD	8.044	9.063	1659353	5103716	2.855m	7.176 #
17) MA 4,4'-DDT	8.304	9.377	16391642	18261064	28.170	24.908m

(f)=RT Delta > 1/2 Window (#)=Amounts differ by > 25% (m)=manual int.

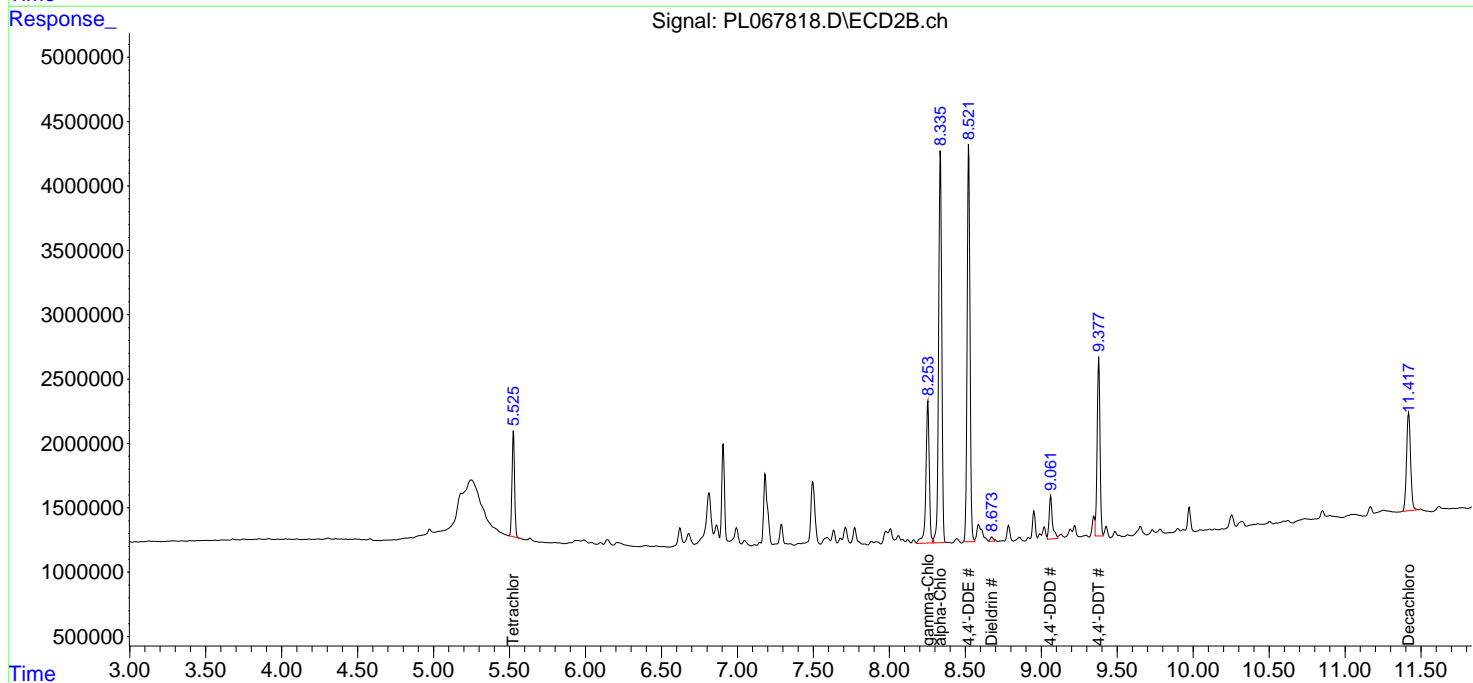
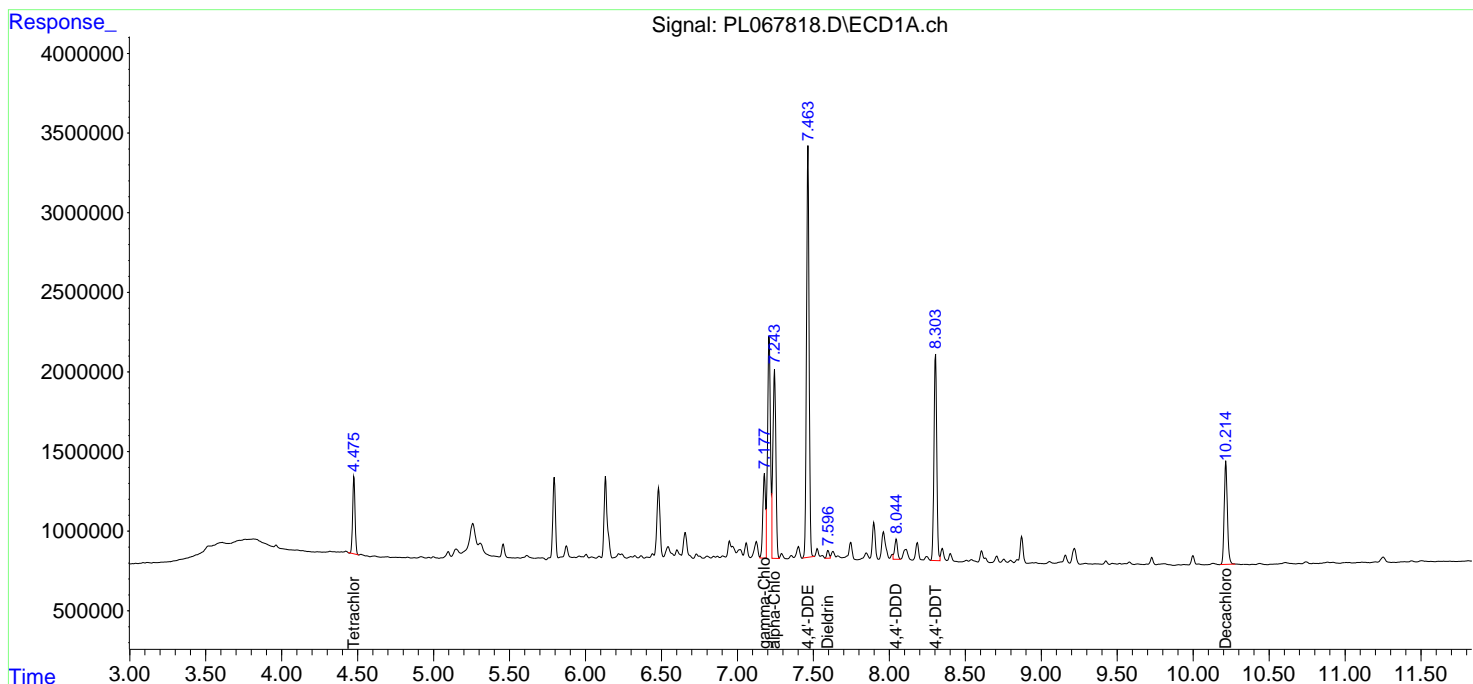
Data Path : Z:\pestpcbsrv\HPCHEM1\ECD_L\Data\PL062521\
 Data File : PL067818.D
 Signal(s) : Signal #1: ECD1A.ch Signal #2: ECD2B.ch
 Acq On : 25 Jun 2021 20:43
 Operator : AR\AJ
 Sample : M2829-01
 Misc :
 ALS Vial : 26 Sample Multiplier: 1

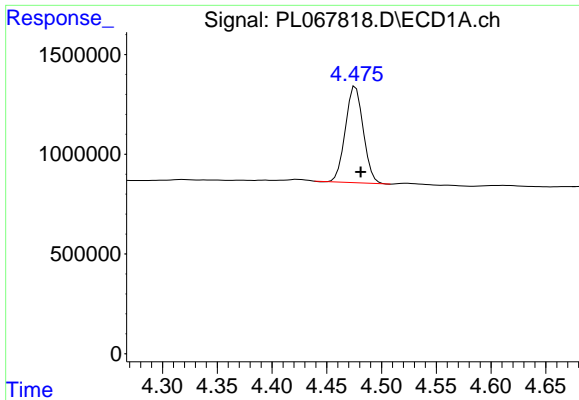
Instrument :
 ECD_L
Client Sampled :
 15B-STOCKPILE-1

Manual Integrations
APPROVED
 Ankita
 6/28/2021 9:29:21 AM

Integration File signal 1: autoint1.e
 Integration File signal 2: autoint2.e
 Quant Time: Jun 28 06:33:39 2021
 Quant Method : Z:\pestpcbsrv\HPCHEM1\ECD_L\methods\PL061021.M
 Quant Title : GC Extractables
 QLast Update : Fri Jun 11 02:00:12 2021
 Response via : Initial Calibration
 Integrator: ChemStation

Volume Inj. : 1 µl
 Signal #1 Phase : ZB-MR2 Signal #2 Phase: ZB-MR1
 Signal #1 Info : 30M x 0.32mm x0.2 Signal #2 Info : 30M x 0.32mm x0.5µm

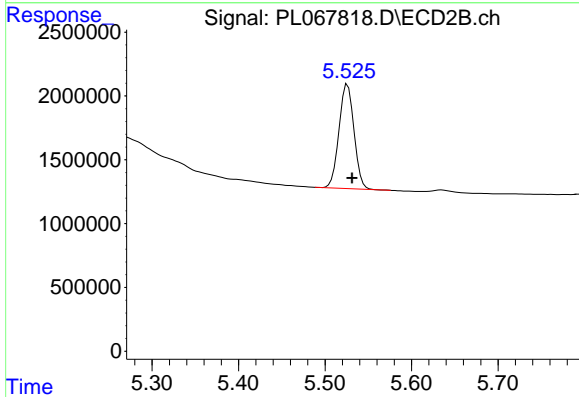




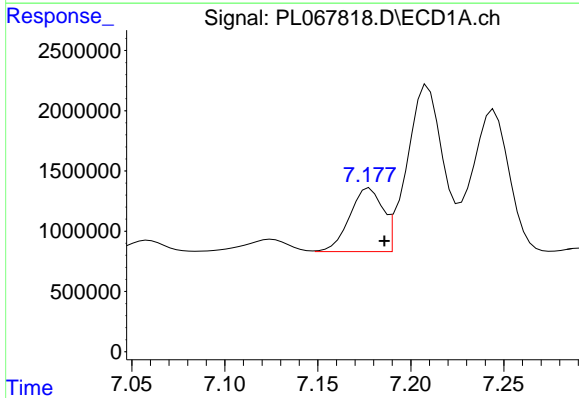
#1 Tetrachloro-m-xylene
 R.T.: 4.476 min
 Delta R.T.: -0.005 min
 Response: 5485264
 Conc: 9.98 ng/ml

Instrument :
 ECD_L
 ClientSampled :
 15B-STOCKPILE-1

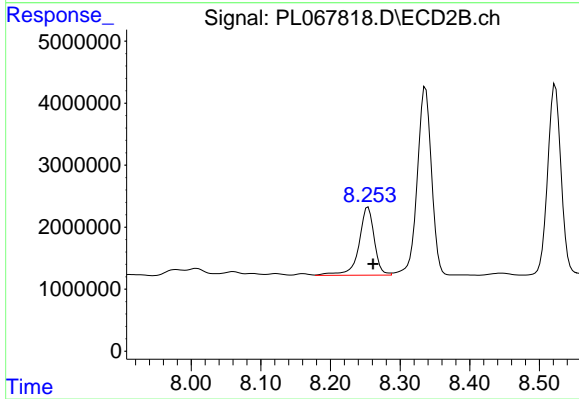
Manual Integrations
 APPROVED
 Ankita
 6/28/2021 9:29:21 AM



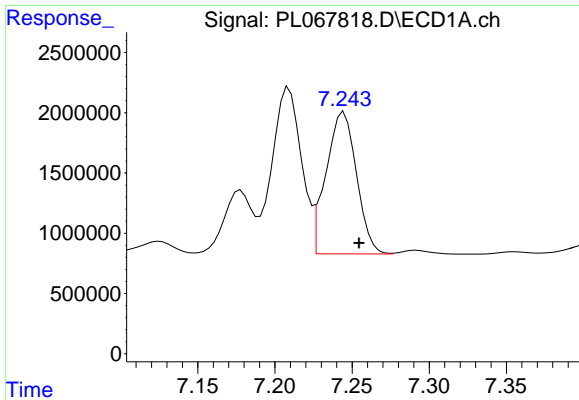
#1 Tetrachloro-m-xylene
 R.T.: 5.526 min
 Delta R.T.: -0.005 min
 Response: 9786657
 Conc: 10.38 ng/ml



#10 gamma-Chlordane
 R.T.: 7.178 min
 Delta R.T.: -0.008 min
 Response: 6517685
 Conc: 8.99 ng/ml



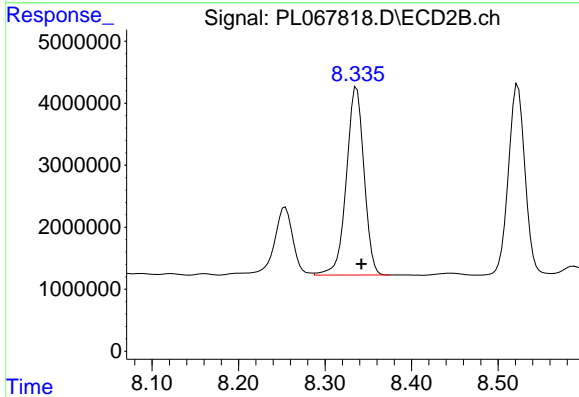
#10 gamma-Chlordane
 R.T.: 8.254 min
 Delta R.T.: -0.007 min
 Response: 16866929
 Conc: 16.71 ng/ml



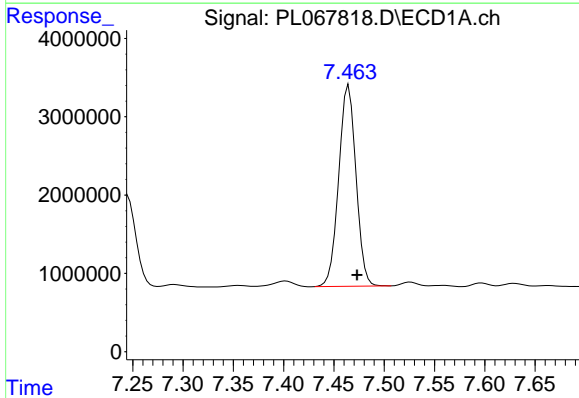
#11 alpha-Chlordane
 R.T.: 7.245 min
 Delta R.T.: -0.010 min
 Response: 16181755
 Conc: 22.10 ng/ml

Instrument :
 ECD_L
 ClientSampled :
 15B-STOCKPILE-1

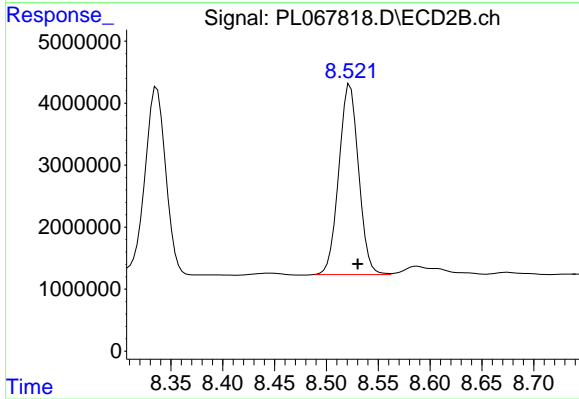
Manual Integrations
 APPROVED
 Ankita
 6/28/2021 9:29:21 AM



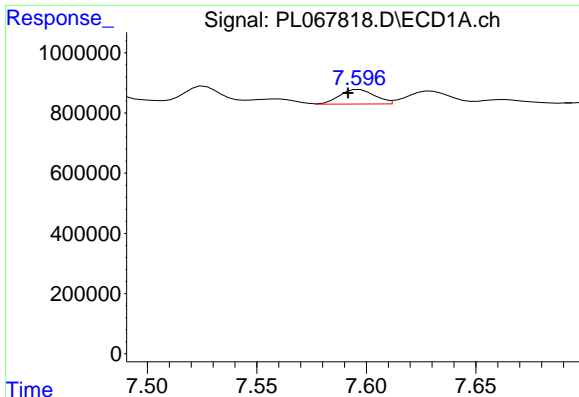
#11 alpha-Chlordane
 R.T.: 8.336 min
 Delta R.T.: -0.006 min
 Response: 42876342
 Conc: 42.47 ng/ml



#12 4,4'-DDE
 R.T.: 7.465 min
 Delta R.T.: -0.008 min
 Response: 30636143
 Conc: 46.05 ng/ml



#12 4,4'-DDE
 R.T.: 8.523 min
 Delta R.T.: -0.008 min
 Response: 40784185
 Conc: 45.02 ng/ml



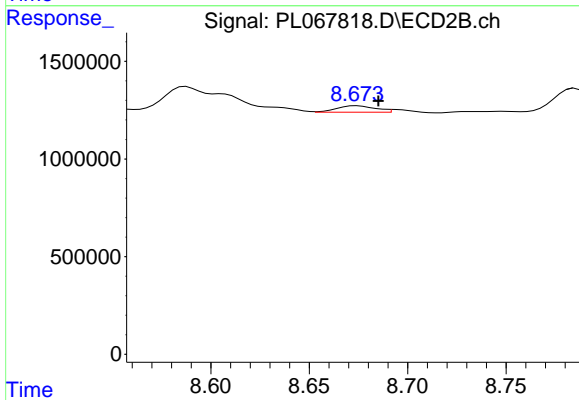
#13 Dieldrin

R.T.: 7.596 min
 Delta R.T.: 0.004 min
 Response: 552386
 Conc: 0.79 ng/ml m

Instrument :
 ECD_L
 ClientSampled :
 15B-STOCKPILE-1

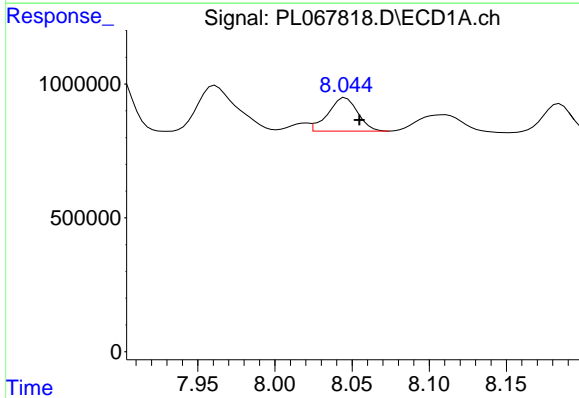
Manual Integrations
 APPROVED

Ankita
 6/28/2021 9:29:21 AM



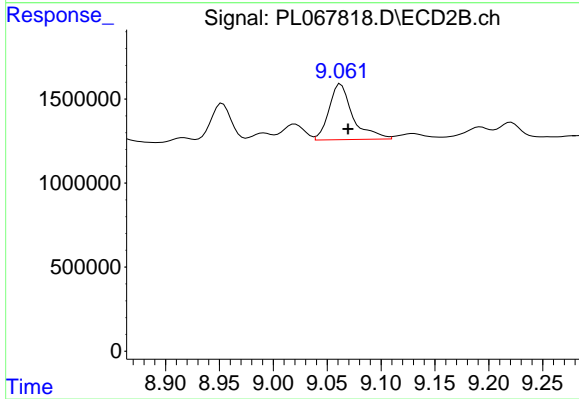
#13 Dieldrin

R.T.: 8.673 min
 Delta R.T.: -0.012 min
 Response: 475542
 Conc: 0.52 ng/ml m



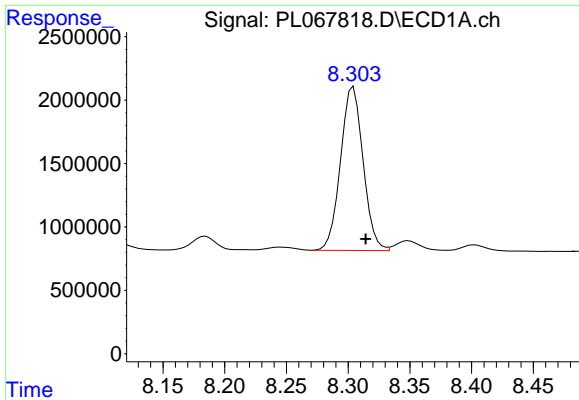
#16 4,4'-DDD

R.T.: 8.044 min
 Delta R.T.: -0.010 min
 Response: 1659353
 Conc: 2.85 ng/ml m



#16 4,4'-DDD

R.T.: 9.063 min
 Delta R.T.: -0.007 min
 Response: 5103716
 Conc: 7.18 ng/ml

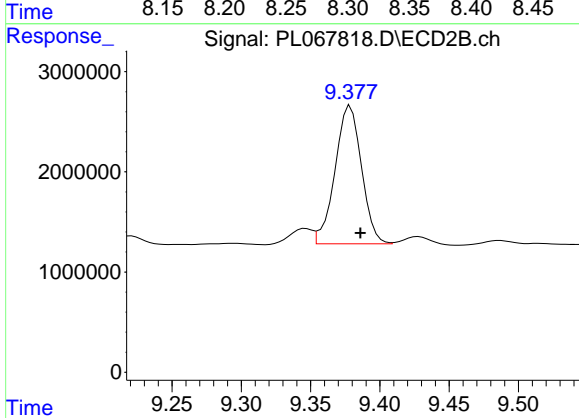


#17 4,4'-DDT

R.T.: 8.304 min
 Delta R.T.: -0.010 min
 Response: 16391642
 Conc: 28.17 ng/ml

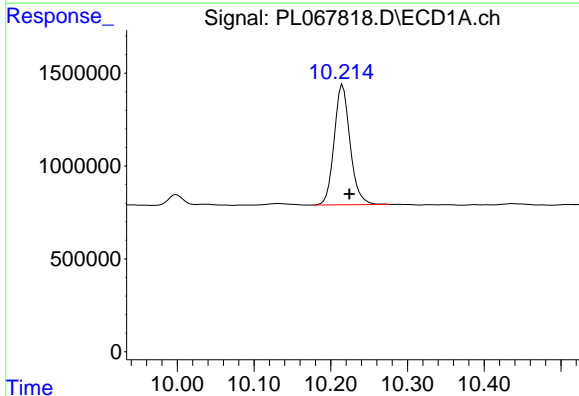
Instrument :
 ECD_L
 ClientSampled :
 15B-STOCKPILE-1

Manual Integrations
 APPROVED
 Ankita
 6/28/2021 9:29:21 AM



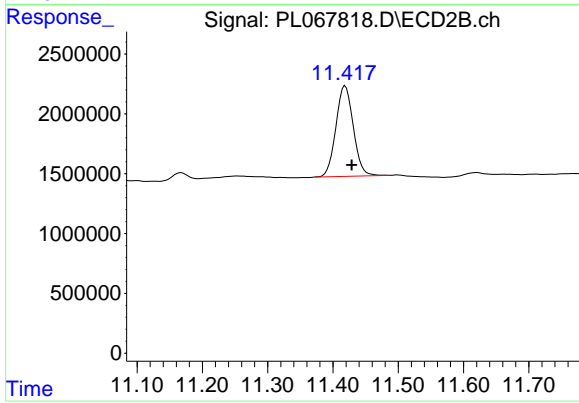
#17 4,4'-DDT

R.T.: 9.377 min
 Delta R.T.: -0.009 min
 Response: 18261064
 Conc: 24.91 ng/ml m



#28 Decachlorobiphenyl

R.T.: 10.215 min
 Delta R.T.: -0.009 min
 Response: 9317692
 Conc: 13.15 ng/ml



#28 Decachlorobiphenyl

R.T.: 11.419 min
 Delta R.T.: -0.010 min
 Response: 14030632
 Conc: 14.09 ng/ml