

Data Path : Z:\pestpcbsrv\HPCHEM1\ECD_L\Data\PL062523\
 Data File : PL083688.D
 Signal(s) : Signal #1: ECD1A.ch Signal #2: ECD2B.ch
 Acq On : 26 Jun 2023 01:59
 Operator : AR\AJ
 Sample : PTOXICC1000
 Misc :
 ALS Vial : 15 Sample Multiplier: 1

Instrument :
 ECD_L
 ClientSampleId :
 PTOXICC1000

Integration File signal 1: autoint1.e
 Integration File signal 2: autoint2.e
 Quant Time: Jun 26 03:11:12 2023
 Quant Method : Z:\pestpcbsrv\HPCHEM1\ECD_L\methods\LTX062523.M
 Quant Title : GC Extractables
 QLast Update : Mon Jun 26 03:10:45 2023
 Response via : Initial Calibration
 Integrator: ChemStation

Volume Inj. : 2 µl
 Signal #1 Phase : Rtx-CLPesticide 1 Signal #2 Phase: Rtx-CLPesticide 1
 Signal #1 Info : 30M x 0.32mm x0.3 Signal #2 Info : 30M x 0.32mm x 0.25µm

Compound	RT#1	RT#2	Resp#1	Resp#2	ng/ml	ng/ml

System Monitoring Compounds						
1) SA Tetrachlo...	3.431	2.693	234.1E6	265.2E6	96.199	95.766
7) SA Decachlor...	8.974	7.881	161.0E6	220.2E6	96.544	90.883
Target Compounds						
2) Toxaphene-1	6.144	5.265	21230948	14365661	909.600	969.131
3) Toxaphene-2	6.968	5.430	73448315	11649152	980.170	950.328
4) Toxaphene-3	7.057	5.908	52127622	17862701	964.836	901.703
5) Toxaphene-4	7.157	6.545	30019916	56164172	967.709	970.086
6) Toxaphene-5	7.480	6.672	41620203	73687142	958.506	958.003

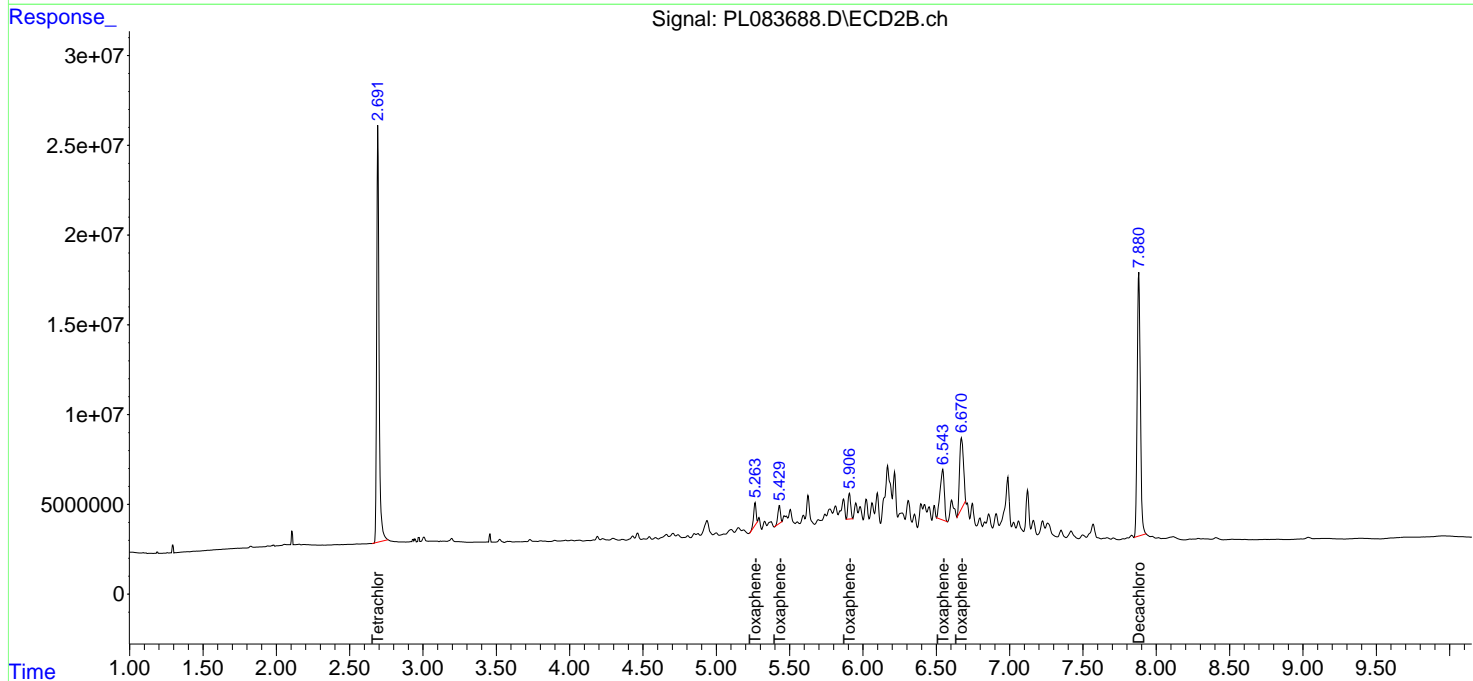
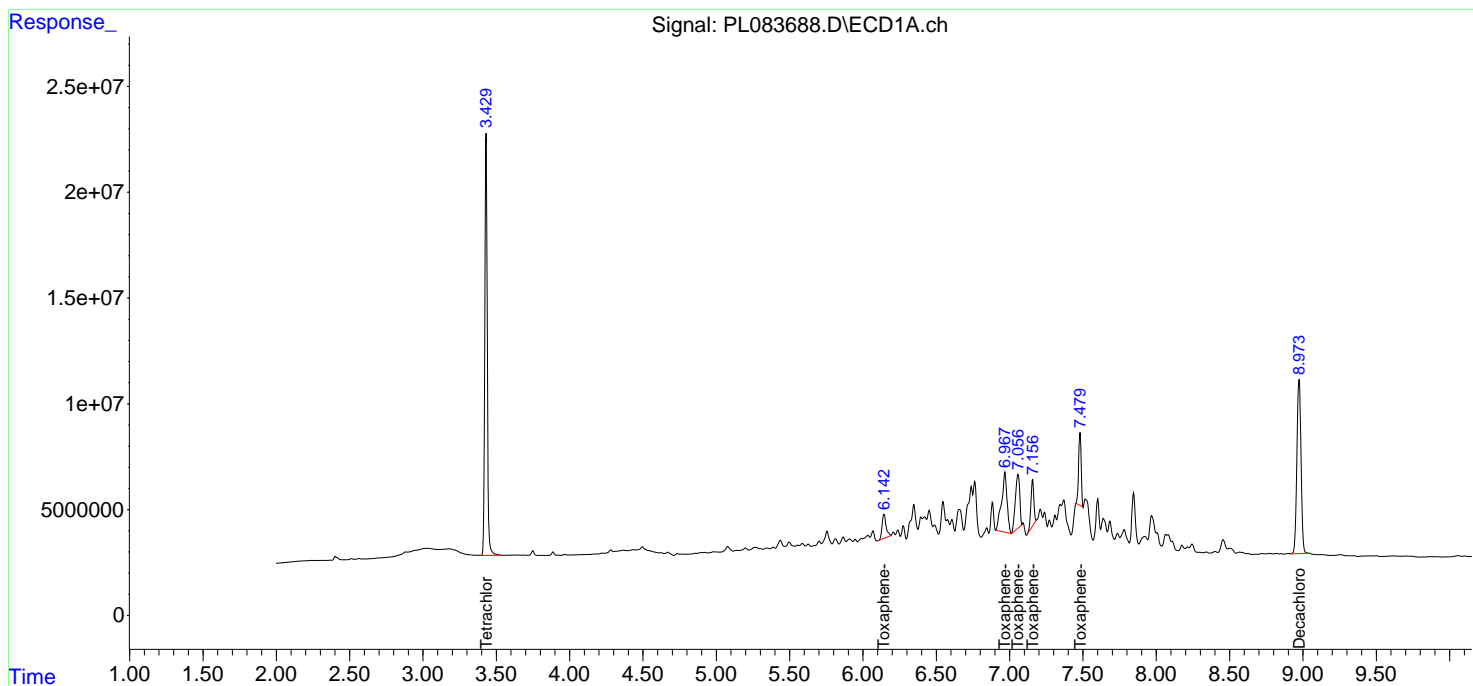
(f)=RT Delta > 1/2 Window (#)=Amounts differ by > 25% (m)=manual int.

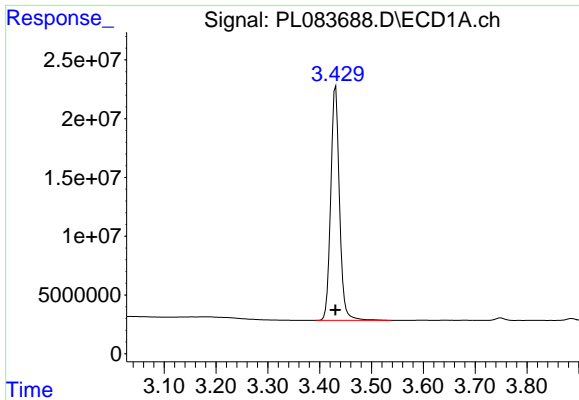
Data Path : Z:\pestpcbsrv\HPCHEM1\ECD_L\Data\PL062523\
 Data File : PL083688.D
 Signal(s) : Signal #1: ECD1A.ch Signal #2: ECD2B.ch
 Acq On : 26 Jun 2023 01:59
 Operator : AR\AJ
 Sample : PTOXICC1000
 Misc :
 ALS Vial : 15 Sample Multiplier: 1

Instrument :
 ECD_L
 ClientSampleId :
 PTOXICC1000

Integration File signal 1: autoint1.e
 Integration File signal 2: autoint2.e
 Quant Time: Jun 26 03:11:12 2023
 Quant Method : Z:\pestpcbsrv\HPCHEM1\ECD_L\methods\LTX062523.M
 Quant Title : GC Extractables
 QLast Update : Mon Jun 26 03:10:45 2023
 Response via : Initial Calibration
 Integrator: ChemStation

Volume Inj. : 2 µl
 Signal #1 Phase : Rtx-CLPesticide 1 Signal #2 Phase: Rtx-CLPesticide 1
 Signal #1 Info : 30M x 0.32mm x0.3 Signal #2 Info : 30M x 0.32mm x 0.25µm

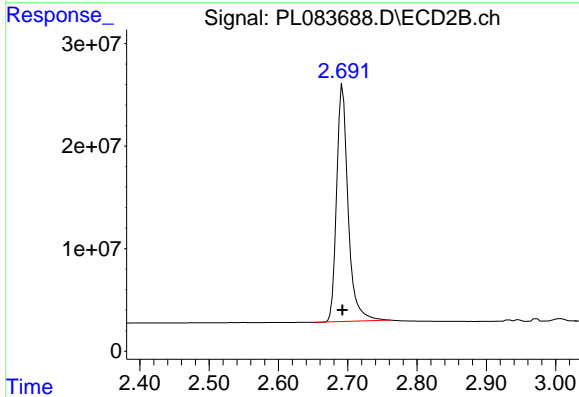




#1 Tetrachloro-m-xylene

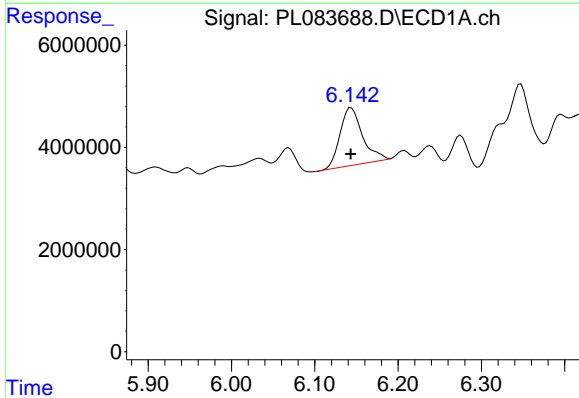
R.T.: 3.431 min
 Delta R.T.: 0.000 min
 Response: 234136857
 Conc: 96.20 ng/ml

Instrument :
 ECD_L
 ClientSampleId :
 PTOXICC1000



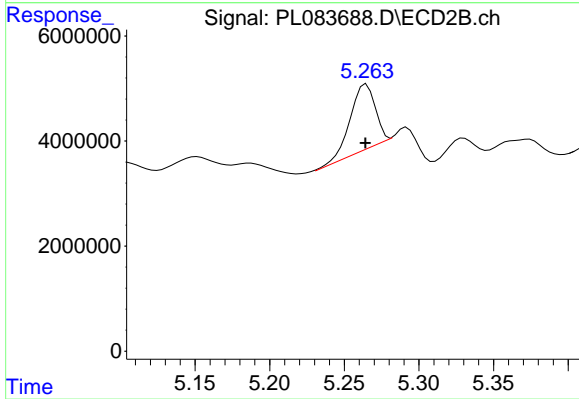
#1 Tetrachloro-m-xylene

R.T.: 2.693 min
 Delta R.T.: 0.000 min
 Response: 265205211
 Conc: 95.77 ng/ml



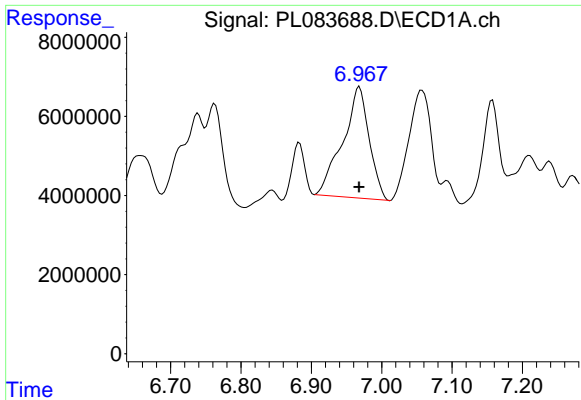
#2 Toxaphene-1

R.T.: 6.144 min
 Delta R.T.: 0.000 min
 Response: 21230948
 Conc: 909.60 ng/ml



#2 Toxaphene-1

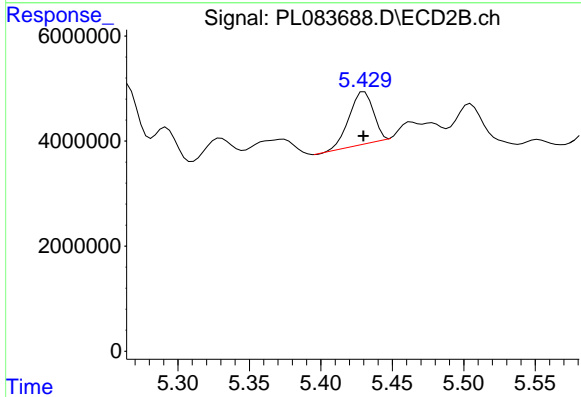
R.T.: 5.265 min
 Delta R.T.: 0.000 min
 Response: 14365661
 Conc: 969.13 ng/ml



#3 Toxaphene-2

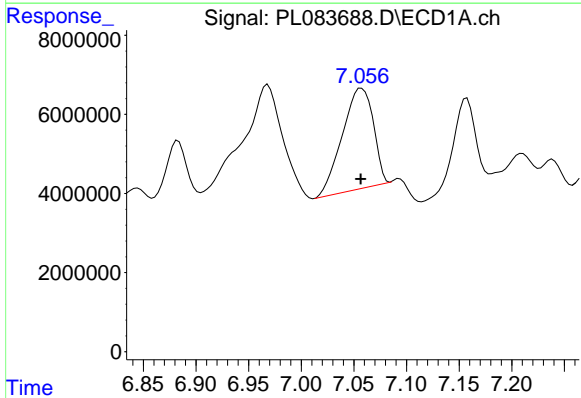
R.T.: 6.968 min
 Delta R.T.: 0.000 min
 Response: 73448315
 Conc: 980.17 ng/ml

Instrument :
 ECD_L
 ClientSampleId :
 PTOXICC1000



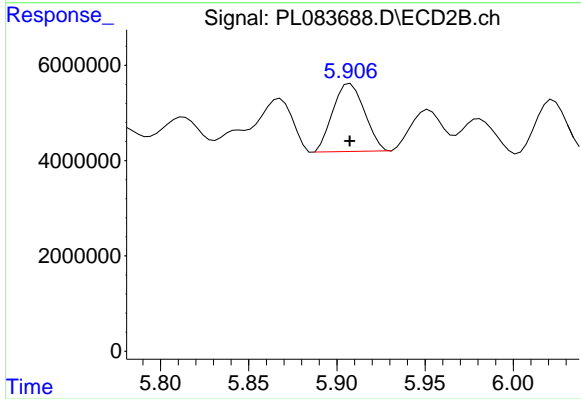
#3 Toxaphene-2

R.T.: 5.430 min
 Delta R.T.: 0.000 min
 Response: 11649152
 Conc: 950.33 ng/ml



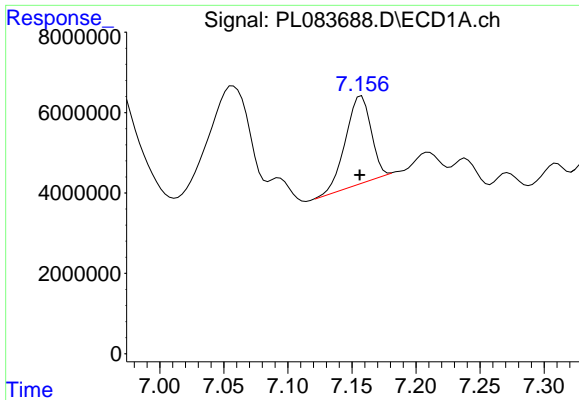
#4 Toxaphene-3

R.T.: 7.057 min
 Delta R.T.: 0.000 min
 Response: 52127622
 Conc: 964.84 ng/ml



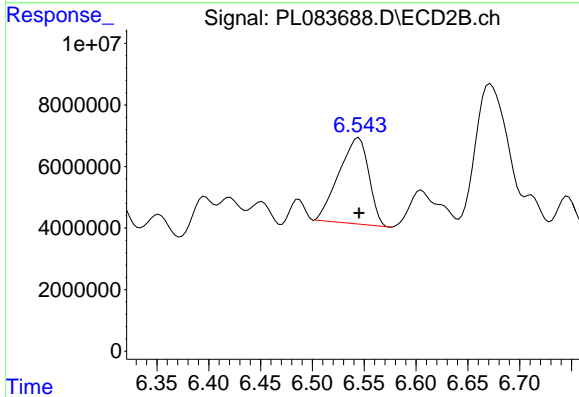
#4 Toxaphene-3

R.T.: 5.908 min
 Delta R.T.: 0.000 min
 Response: 17862701
 Conc: 901.70 ng/ml

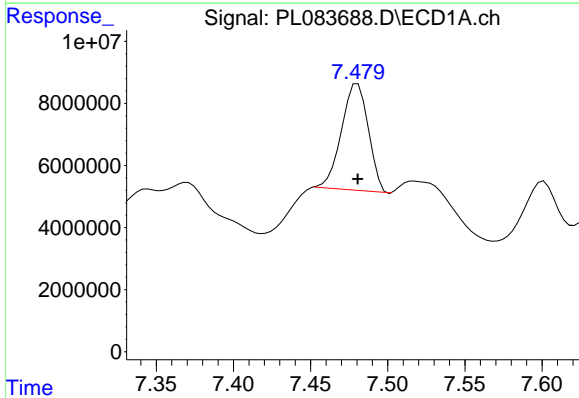


#5 Toxaphene-4
 R.T.: 7.157 min
 Delta R.T.: 0.001 min
 Response: 30019916
 Conc: 967.71 ng/ml

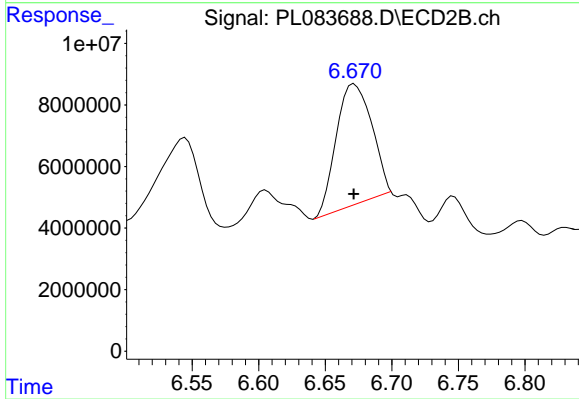
Instrument :
 ECD_L
 ClientSampleId :
 PTOXICC1000



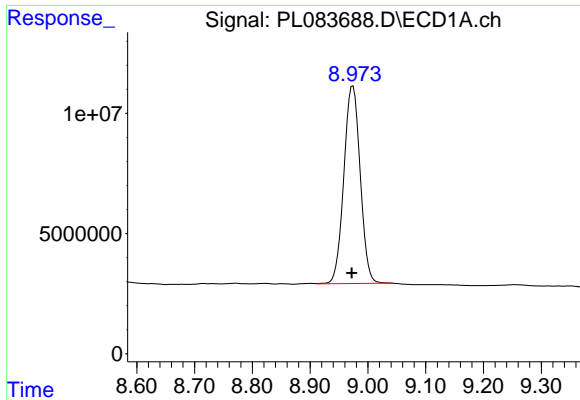
#5 Toxaphene-4
 R.T.: 6.545 min
 Delta R.T.: 0.000 min
 Response: 56164172
 Conc: 970.09 ng/ml



#6 Toxaphene-5
 R.T.: 7.480 min
 Delta R.T.: 0.000 min
 Response: 41620203
 Conc: 958.51 ng/ml



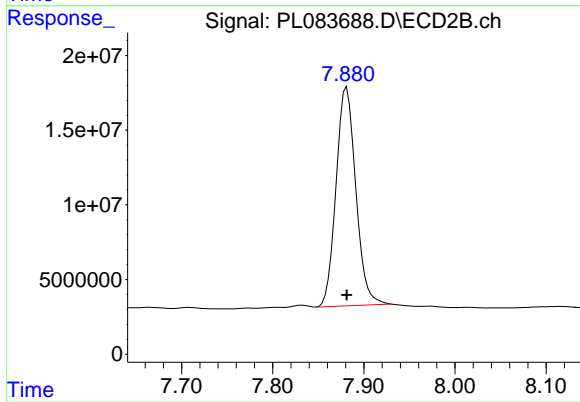
#6 Toxaphene-5
 R.T.: 6.672 min
 Delta R.T.: 0.000 min
 Response: 73687142
 Conc: 958.00 ng/ml



#7 Decachlorobiphenyl

R.T.: 8.974 min
Delta R.T.: 0.002 min
Response: 160950317
Conc: 96.54 ng/ml

Instrument :
ECD_L
ClientSampleId :
PTOXICC1000



#7 Decachlorobiphenyl

R.T.: 7.881 min
Delta R.T.: 0.000 min
Response: 220192860
Conc: 90.88 ng/ml