

Data Path : Z:\pestpcbsrv\HPCHEM1\ECD_L\Data\PL062620\
 Data File : PL059539.D
 Signal(s) : Signal #1: ECD1A.ch Signal #2: ECD2B.ch
 Acq On : 26 Jun 2020 15:58
 Operator : AJ\MA
 Sample : L3126-11
 Misc :
 ALS Vial : 14 Sample Multiplier: 1

Instrument :
 ECD_L
 ClientSampleId :
 TP-4-S

Integration File signal 1: autoint1.e
 Integration File signal 2: autoint2.e
 Quant Time: Jun 26 23:48:02 2020
 Quant Method : Z:\pestpcbsrv\HPCHEM1\ECD_L\methods\PL062220.M
 Quant Title : GC Extractables
 QLast Update : Mon Jun 22 14:09:48 2020
 Response via : Initial Calibration
 Integrator: ChemStation

Volume Inj. : 1 µl
 Signal #1 Phase : ZB-MR1 Signal #2 Phase: ZB-MR1
 Signal #1 Info : 30M x 0.32mm x0.2 Signal #2 Info : 30M x 0.32mm x0.5µm

Compound	RT#1	RT#2	Resp#1	Resp#2	ng/ml	ng/ml

System Monitoring Compounds						
1) SA Tetrachlo...	3.517	4.071	29252118	42720094	16.277	16.552
2) SA Decachlor...	8.287	9.182	21127320	30066209	12.407	13.132
Target Compounds						
2) A alpha-BHC	3.963	0.000	750548	0	0.291	N.D. #
4) MA Heptachlor	0.000	5.261	0	469042	N.D.	0.145 #
5) MB Aldrin	0.000	5.575	0	136411	N.D.	0.044 #
7) B delta-BHC	0.000	5.109f	0	1150650	N.D.	0.414 #
8) B Heptachlo...	0.000	5.989f	0	192423	N.D.	0.077 #
9) A Endosulfan I	5.595	6.308	439338	651174	0.299	0.240
11) B alpha-Chl...	0.000	6.265	0	423791	N.D.	0.144 #
12) B 4,4'-DDE	0.000	6.419	0	556929	N.D.	0.206 #
14) MA Endrin	0.000	6.822f	0	887689	N.D.	0.359 #
15) B Endosulfa...	0.000	7.008	0	1230573	N.D.	0.485 #
17) MA 4,4'-DDT	6.456	0.000	100520	0	0.076	N.D. #
18) B Endrin al...	6.520	7.126	53103	302519	0.040	0.138 #
22) Mirex	0.000	8.309f	0	742233	N.D.	0.376 #
23) Chlordane-1	4.421f	0.000	590590	0	10.378	N.D. #
26) Chlordane-4	0.000	6.265	0	423791	N.D.	0.892 #
27) Chlordane-5	0.000	7.070	0	274231	N.D.	3.167 #

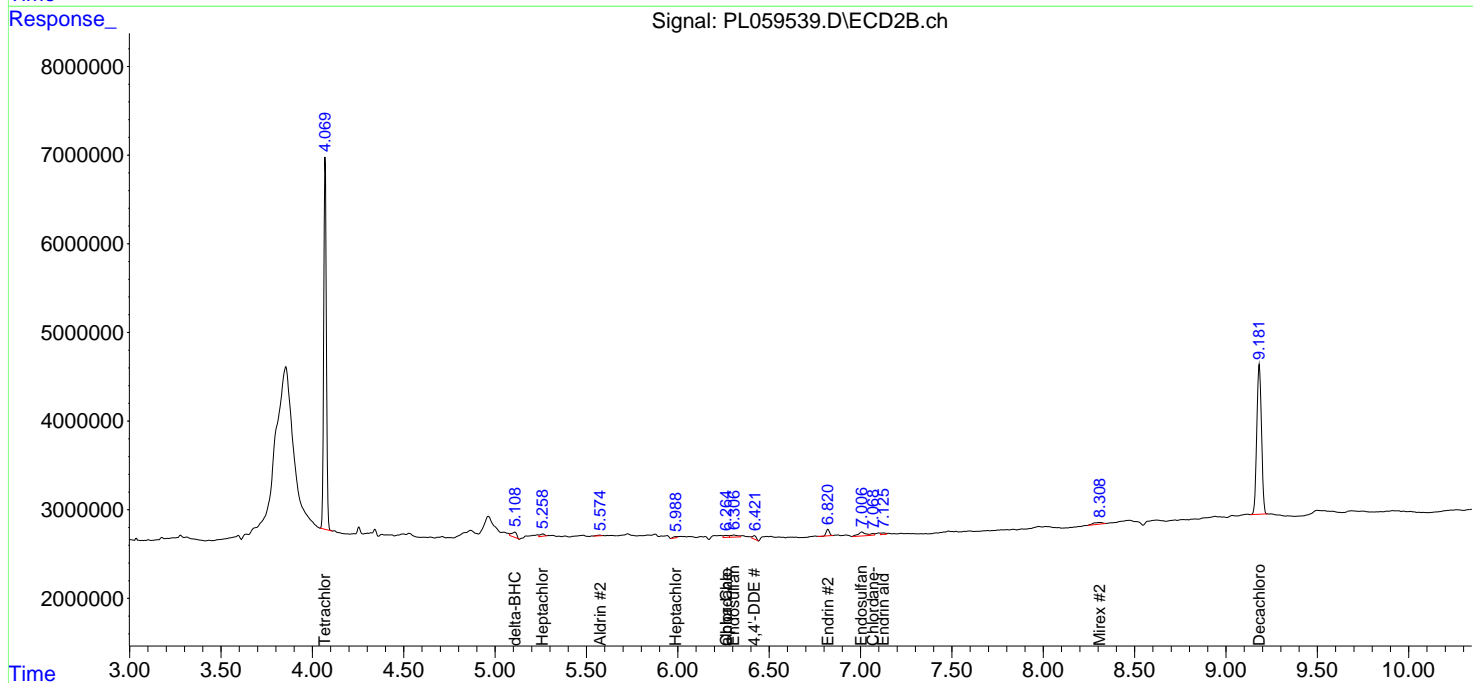
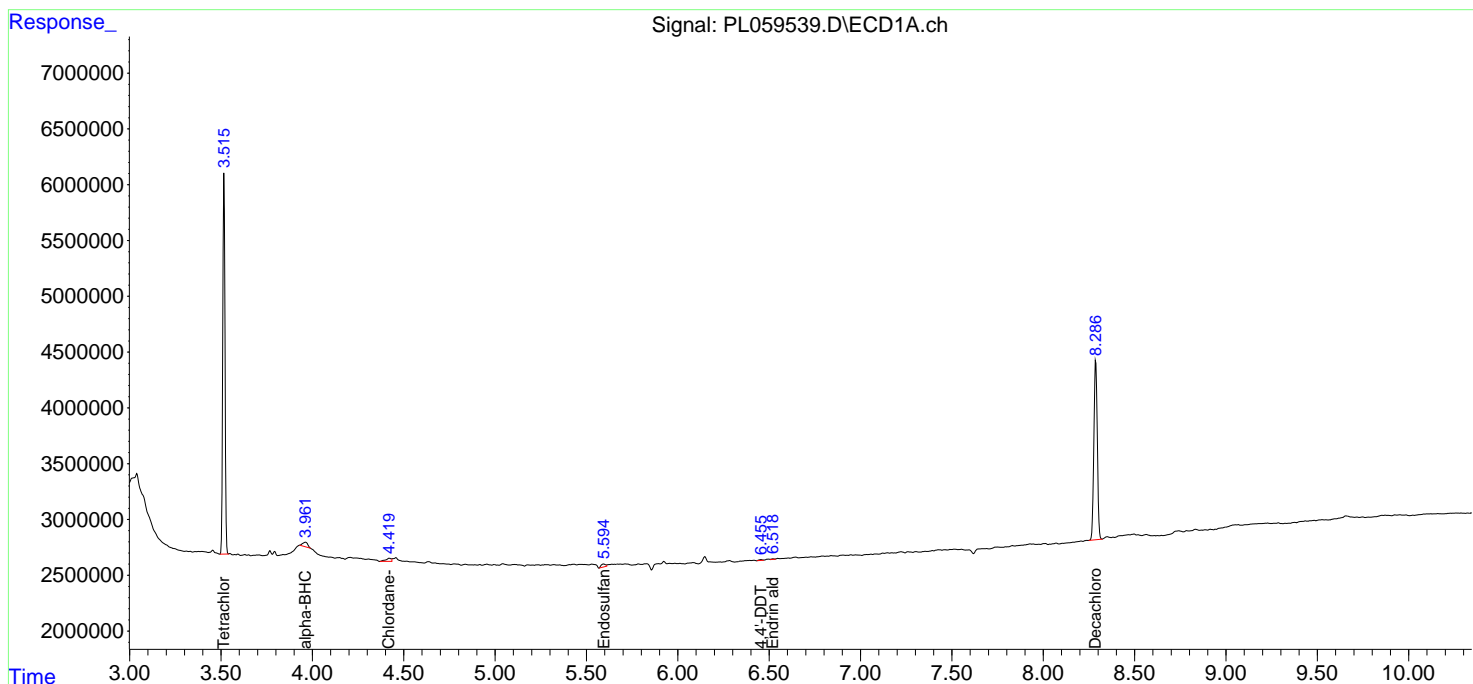
(f)=RT Delta > 1/2 Window (#)=Amounts differ by > 25% (m)=manual int.

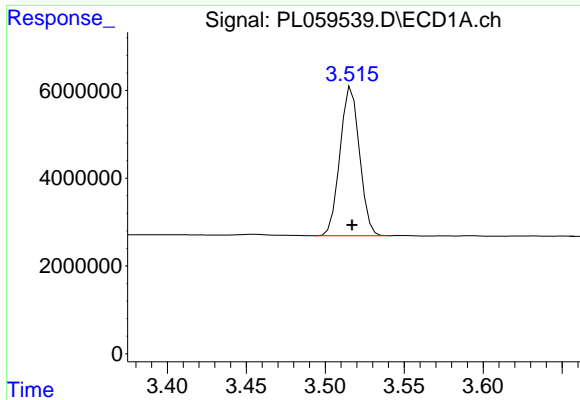
Data Path : Z:\pestpcbsrv\HPCHEM1\ECD_L\Data\PL062620\
 Data File : PL059539.D
 Signal(s) : Signal #1: ECD1A.ch Signal #2: ECD2B.ch
 Acq On : 26 Jun 2020 15:58
 Operator : AJ\MA
 Sample : L3126-11
 Misc :
 ALS Vial : 14 Sample Multiplier: 1

Instrument :
 ECD_L
 Client Sampled :
 TP-4-S

Integration File signal 1: autoint1.e
 Integration File signal 2: autoint2.e
 Quant Time: Jun 26 23:48:02 2020
 Quant Method : Z:\pestpcbsrv\HPCHEM1\ECD_L\methods\PL062220.M
 Quant Title : GC Extractables
 QLast Update : Mon Jun 22 14:09:48 2020
 Response via : Initial Calibration
 Integrator: ChemStation

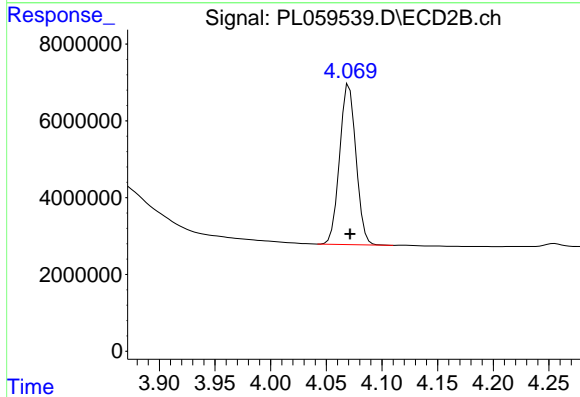
Volume Inj. : 1 µl
 Signal #1 Phase : ZB-MR2 Signal #2 Phase: ZB-MR1
 Signal #1 Info : 30M x 0.32mm x0.2 Signal #2 Info : 30M x 0.32mm x0.5µm



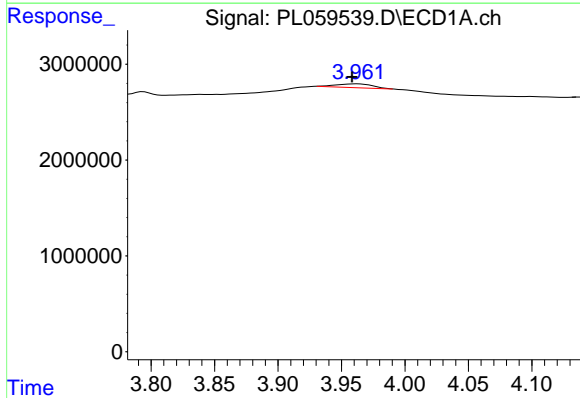


#1 Tetrachloro-m-xylene
 R.T.: 3.517 min
 Delta R.T.: 0.000 min
 Response: 29252118
 Conc: 16.28 ng/ml

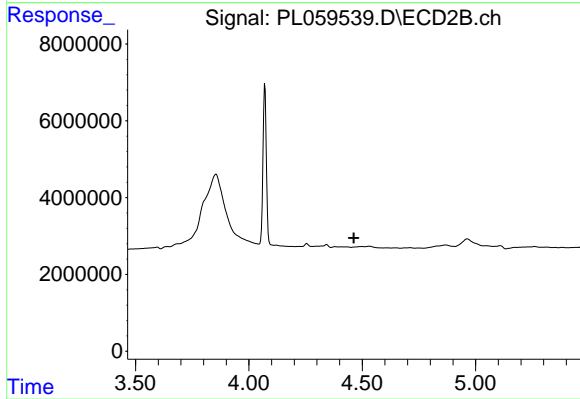
Instrument :
 ECD_L
 ClientSampled :
 TP-4-S



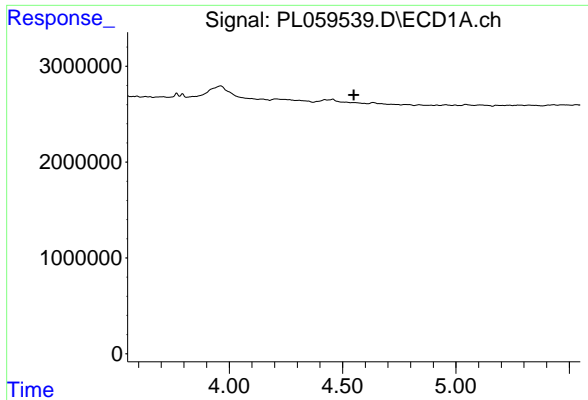
#1 Tetrachloro-m-xylene
 R.T.: 4.071 min
 Delta R.T.: 0.000 min
 Response: 42720094
 Conc: 16.55 ng/ml



#2 alpha-BHC
 R.T.: 3.963 min
 Delta R.T.: 0.004 min
 Response: 750548
 Conc: 0.29 ng/ml



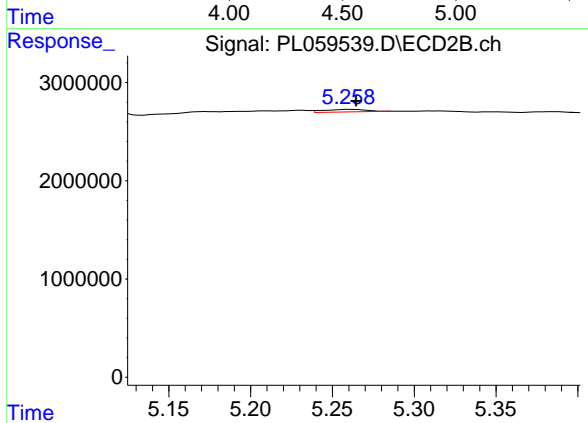
#2 alpha-BHC
 R.T.: 0.000 min
 Exp R.T. : 4.463 min
 Response: 0
 Conc: N.D.



#4 Heptachlor

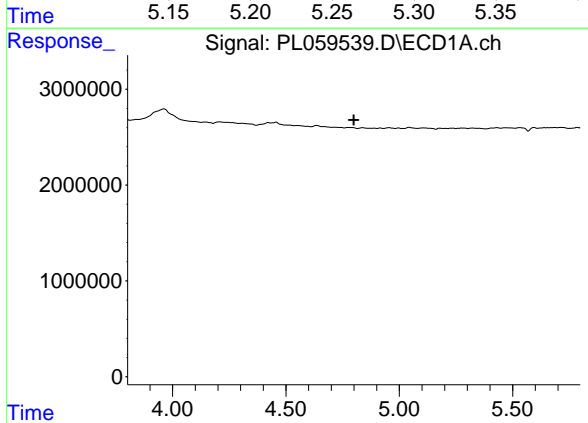
R.T.: 0.000 min
 Exp R.T. : 4.549 min
 Response: 0
 Conc: N.D.

Instrument :
 ECD_L
 ClientSampleId :
 TP-4-S



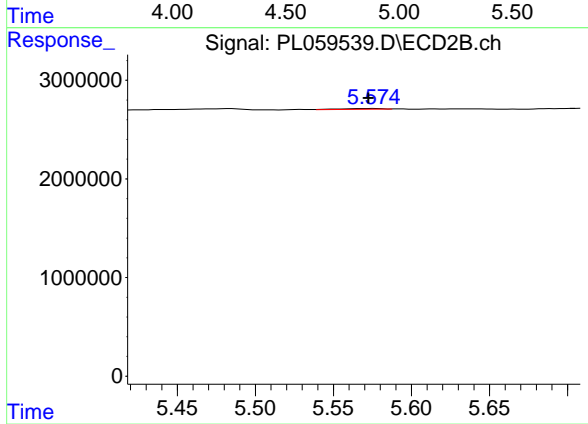
#4 Heptachlor

R.T.: 5.261 min
 Delta R.T.: -0.004 min
 Response: 469042
 Conc: 0.14 ng/ml



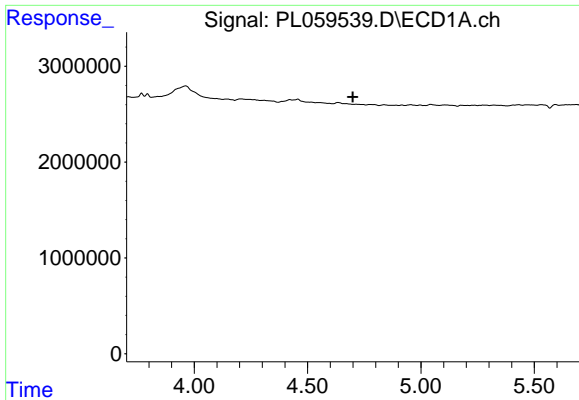
#5 Aldrin

R.T.: 0.000 min
 Exp R.T. : 4.799 min
 Response: 0
 Conc: N.D.



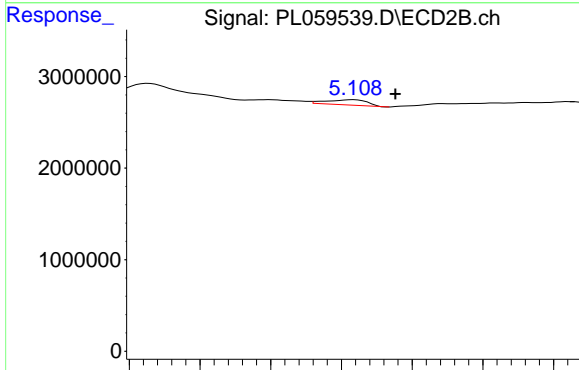
#5 Aldrin

R.T.: 5.575 min
 Delta R.T.: 0.003 min
 Response: 136411
 Conc: 0.04 ng/ml

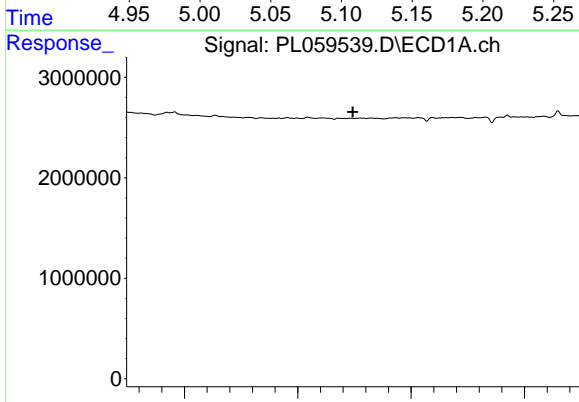


#7 delta-BHC
 R.T.: 0.000 min
 Exp R.T. : 4.700 min
 Response: 0
 Conc: N.D.

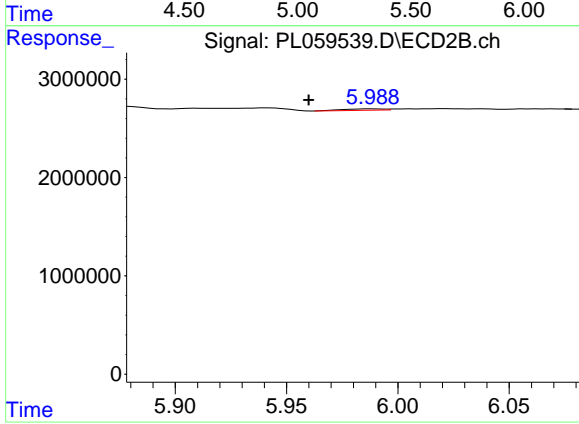
Instrument :
 ECD_L
 ClientSampleId :
 TP-4-S



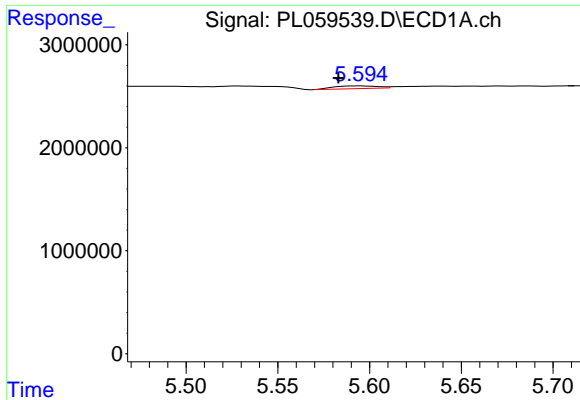
#7 delta-BHC
 R.T.: 5.109 min
 Delta R.T.: -0.030 min
 Response: 1150650
 Conc: 0.41 ng/ml



#8 Heptachlor epoxide
 R.T.: 0.000 min
 Exp R.T. : 5.243 min
 Response: 0
 Conc: N.D.

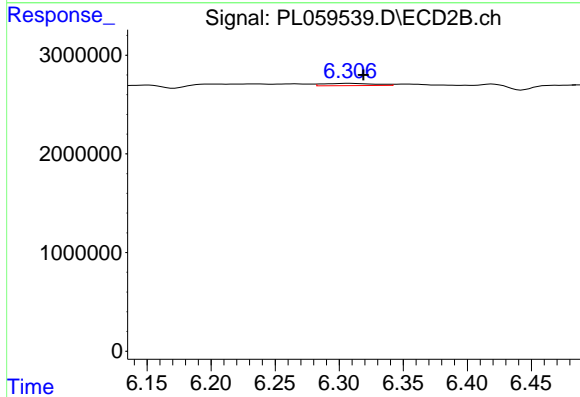


#8 Heptachlor epoxide
 R.T.: 5.989 min
 Delta R.T.: 0.029 min
 Response: 192423
 Conc: 0.08 ng/ml

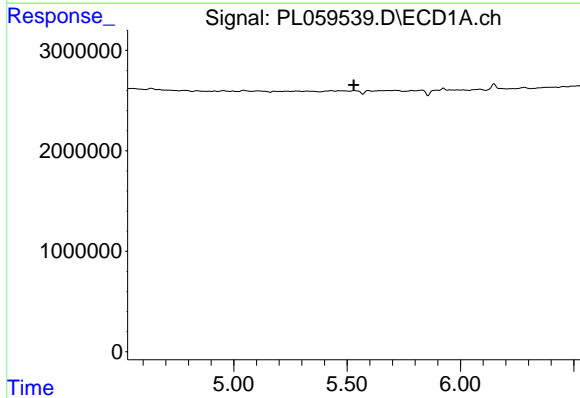


#9 Endosulfan I
 R.T.: 5.595 min
 Delta R.T.: 0.012 min
 Response: 439338
 Conc: 0.30 ng/ml

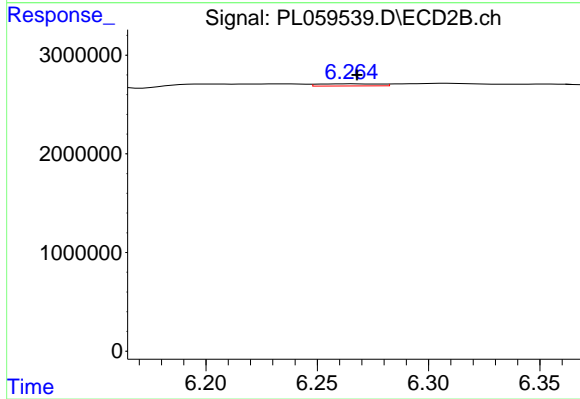
Instrument :
 ECD_L
 ClientSampleId :
 TP-4-S



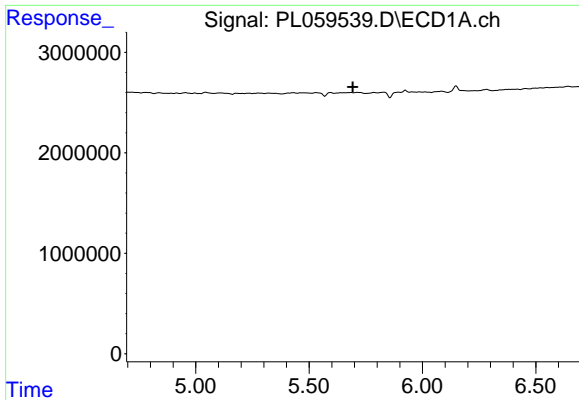
#9 Endosulfan I
 R.T.: 6.308 min
 Delta R.T.: -0.011 min
 Response: 651174
 Conc: 0.24 ng/ml



#11 alpha-Chlordane
 R.T.: 0.000 min
 Exp R.T. : 5.530 min
 Response: 0
 Conc: N.D.

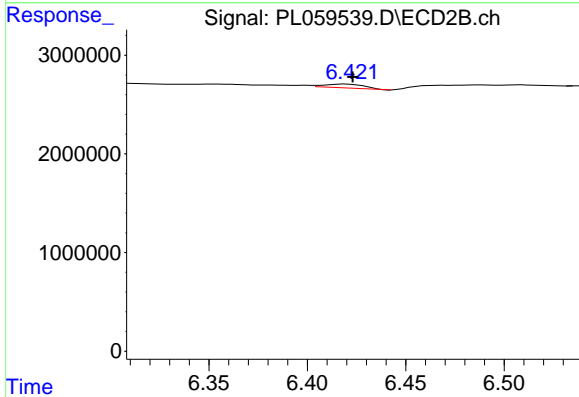


#11 alpha-Chlordane
 R.T.: 6.265 min
 Delta R.T.: -0.003 min
 Response: 423791
 Conc: 0.14 ng/ml

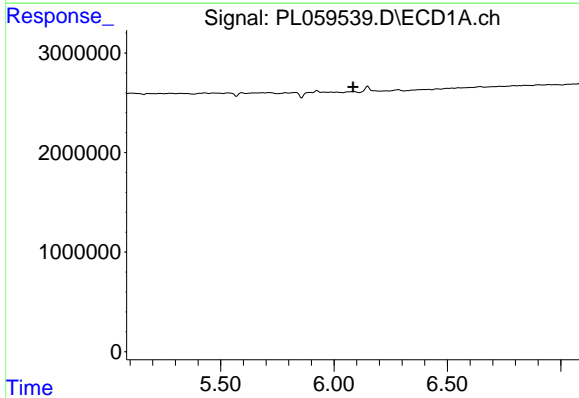


#12 4,4'-DDE
 R.T.: 0.000 min
 Exp R.T.: 5.693 min
 Response: 0
 Conc: N.D.

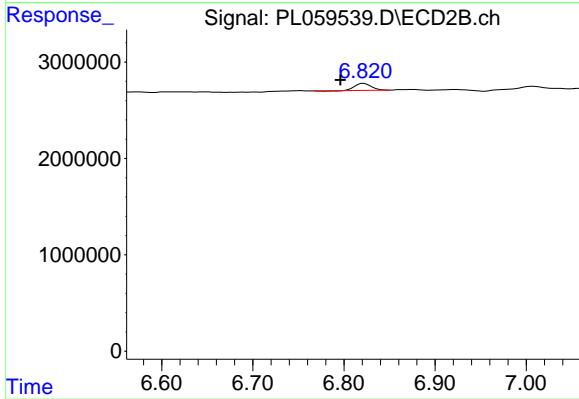
Instrument :
 ECD_L
 ClientSampleId :
 TP-4-S



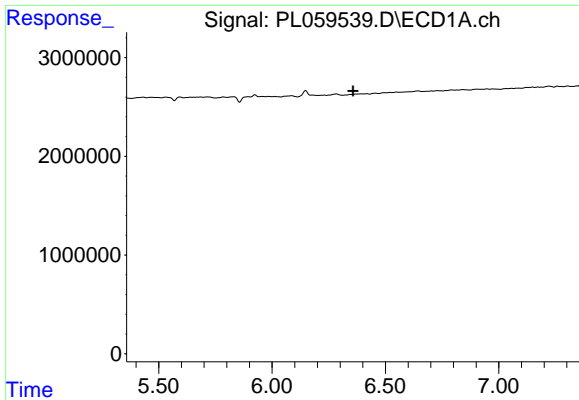
#12 4,4'-DDE
 R.T.: 6.419 min
 Delta R.T.: -0.004 min
 Response: 556929
 Conc: 0.21 ng/ml



#14 Endrin
 R.T.: 0.000 min
 Exp R.T.: 6.085 min
 Response: 0
 Conc: N.D.



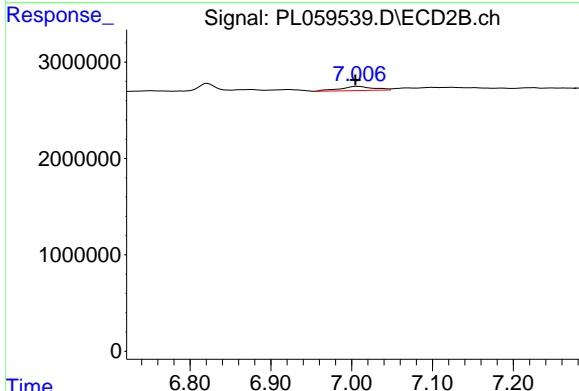
#14 Endrin
 R.T.: 6.822 min
 Delta R.T.: 0.026 min
 Response: 887689
 Conc: 0.36 ng/ml



#15 Endosulfan II

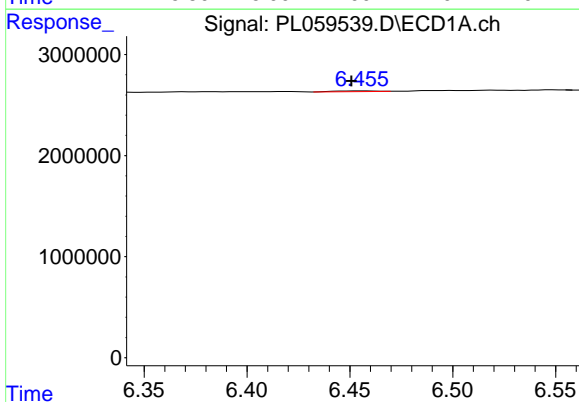
R.T.: 0.000 min
 Exp R.T.: 6.357 min
 Response: 0
 Conc: N.D.

Instrument :
 ECD_L
 ClientSampleId :
 TP-4-S



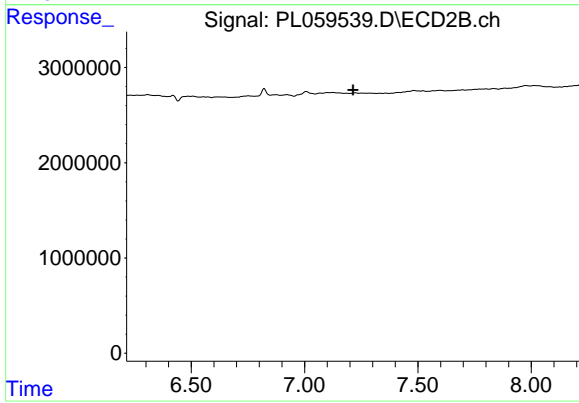
#15 Endosulfan II

R.T.: 7.008 min
 Delta R.T.: 0.003 min
 Response: 1230573
 Conc: 0.49 ng/ml



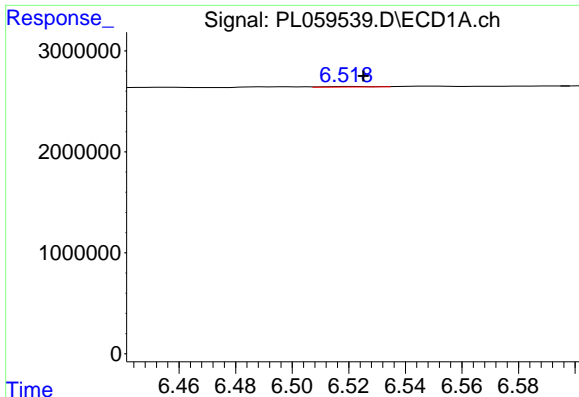
#17 4,4'-DDT

R.T.: 6.456 min
 Delta R.T.: 0.005 min
 Response: 100520
 Conc: 0.08 ng/ml



#17 4,4'-DDT

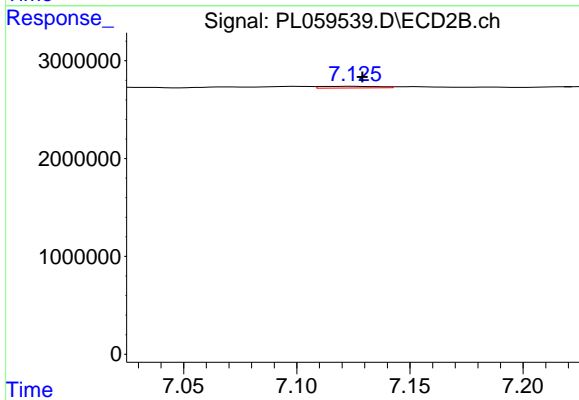
R.T.: 0.000 min
 Exp R.T.: 7.214 min
 Response: 0
 Conc: N.D.



#18 Endrin aldehyde

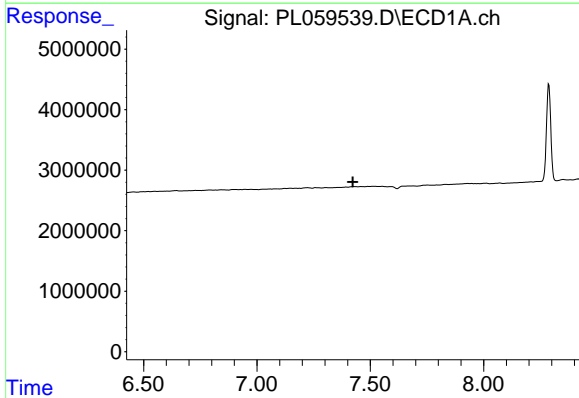
R.T.: 6.520 min
 Delta R.T.: -0.005 min
 Response: 53103
 Conc: 0.04 ng/ml

Instrument :
 ECD_L
 ClientSampled :
 TP-4-S



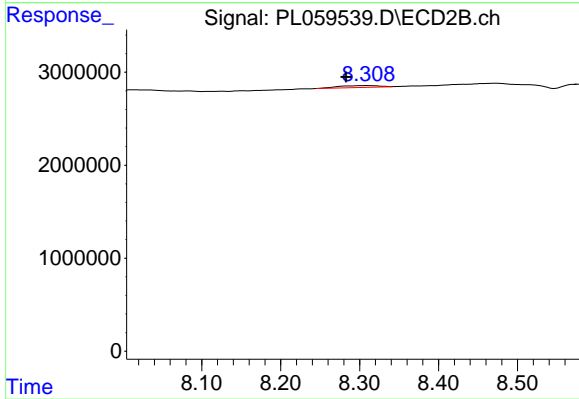
#18 Endrin aldehyde

R.T.: 7.126 min
 Delta R.T.: -0.003 min
 Response: 302519
 Conc: 0.14 ng/ml



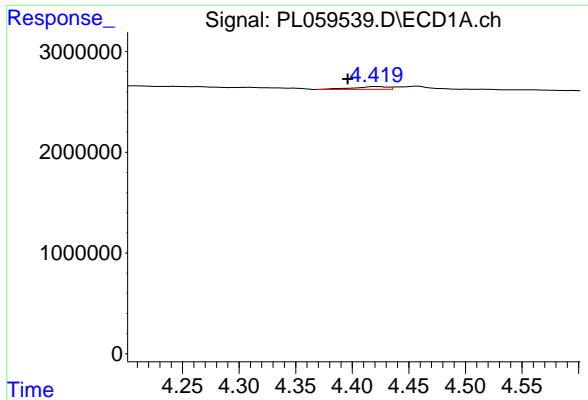
#22 Mirex

R.T.: 0.000 min
 Exp R.T. : 7.423 min
 Response: 0
 Conc: N.D.



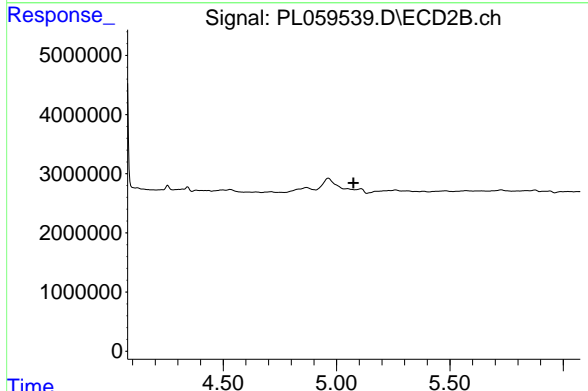
#22 Mirex

R.T.: 8.309 min
 Delta R.T.: 0.026 min
 Response: 742233
 Conc: 0.38 ng/ml

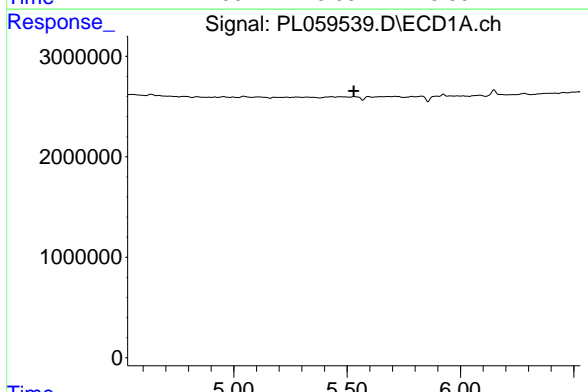


#23 Chlordane-1
 R.T.: 4.421 min
 Delta R.T.: 0.025 min
 Response: 590590
 Conc: 10.38 ng/ml

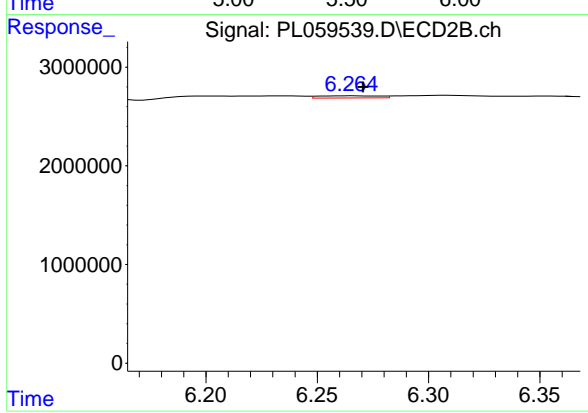
Instrument :
 ECD_L
 ClientSampleId :
 TP-4-S



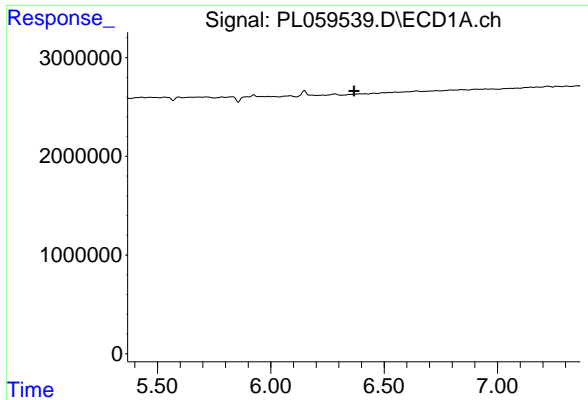
#23 Chlordane-1
 R.T.: 0.000 min
 Exp R.T. : 5.075 min
 Response: 0
 Conc: N.D.



#26 Chlordane-4
 R.T.: 0.000 min
 Exp R.T. : 5.530 min
 Response: 0
 Conc: N.D.

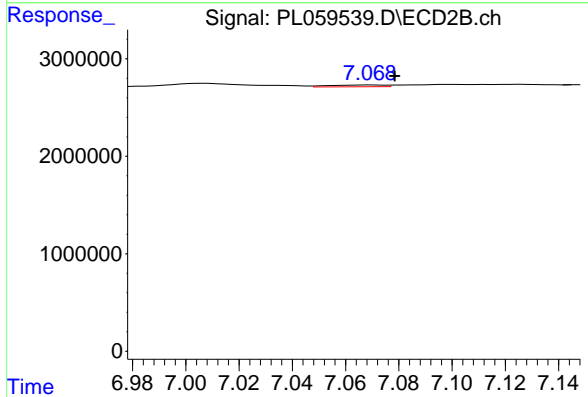


#26 Chlordane-4
 R.T.: 6.265 min
 Delta R.T.: -0.005 min
 Response: 423791
 Conc: 0.89 ng/ml

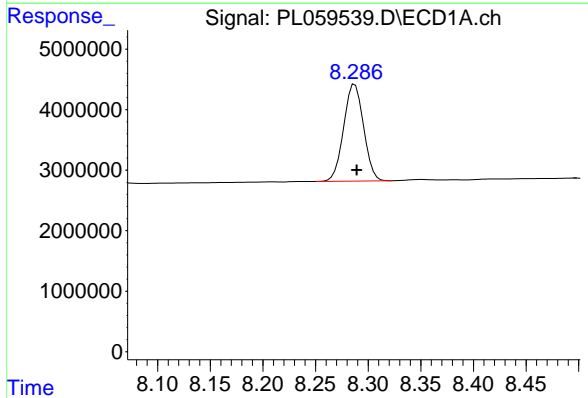


#27 Chlordane-5
 R.T.: 0.000 min
 Exp R.T.: 6.367 min
 Response: 0
 Conc: N.D.

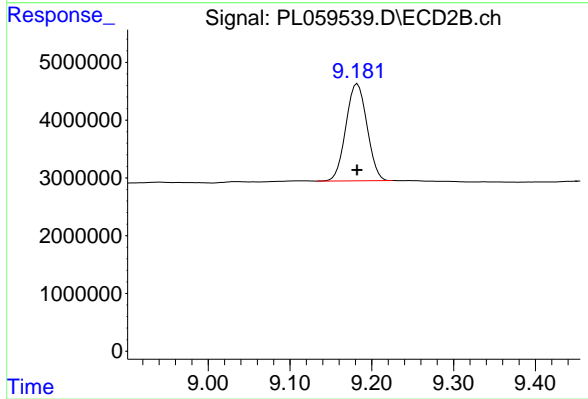
Instrument :
 ECD_L
 ClientSampleId :
 TP-4-S



#27 Chlordane-5
 R.T.: 7.070 min
 Delta R.T.: -0.009 min
 Response: 274231
 Conc: 3.17 ng/ml



#28 Decachlorobiphenyl
 R.T.: 8.287 min
 Delta R.T.: -0.002 min
 Response: 21127320
 Conc: 12.41 ng/ml



#28 Decachlorobiphenyl
 R.T.: 9.182 min
 Delta R.T.: 0.000 min
 Response: 30066209
 Conc: 13.13 ng/ml