

Data Path : Z:\pestpcbsrv\HPCHEM1\ECD_L\Data\PL062625\
 Data File : PL096182.D
 Signal(s) : Signal #1: ECD1A.ch Signal #2: ECD2B.ch
 Acq On : 26 Jun 2025 13:42
 Operator : AR\AJ
 Sample : PCHLORICC250
 Misc :
 ALS Vial : 13 Sample Multiplier: 1

Instrument :
 ECD_L
 ClientSampleId :

Integration File signal 1: autoint1.e
 Integration File signal 2: autoint2.e
 Quant Time: Jun 26 13:51:40 2025
 Quant Method : Z:\pestpcbsrv\HPCHEM1\ECD_L\methods\PL062625.M
 Quant Title : GC Extractables
 QLast Update : Thu Jun 26 13:51:30 2025
 Response via : Initial Calibration
 Integrator: ChemStation

Volume Inj. : 1 µl
 Signal #1 Phase : ZB-MR1 Signal #2 Phase: ZB-MR2
 Signal #1 Info : 30M x 0.32mm x0.5 Signal #2 Info : 30M x 0.32mm x0.25µm

	Compound	RT#1	RT#2	Resp#1	Resp#2	ng/ml	ng/ml

System Monitoring Compounds							
1)	SA Tetrachlo...	3.570	2.879	84460033	145.2E6	25.773	25.298
28)	SA Decachlor...	9.125	8.066	66423879	150.2E6	26.799	26.160
Target Compounds							
23)	Chlordane-1	4.735	3.896	43632577	49986496	259.228	252.671
24)	Chlordane-2	5.262	4.477	45687016	57228133	266.444	258.586
25)	Chlordane-3	5.967	5.112	167.5E6	171.5E6	252.688	248.663
26)	Chlordane-4	6.052	5.176	200.1E6	152.0E6	255.145	251.264
27)	Chlordane-5	6.894	6.075	36917794	64365490	262.746	249.737

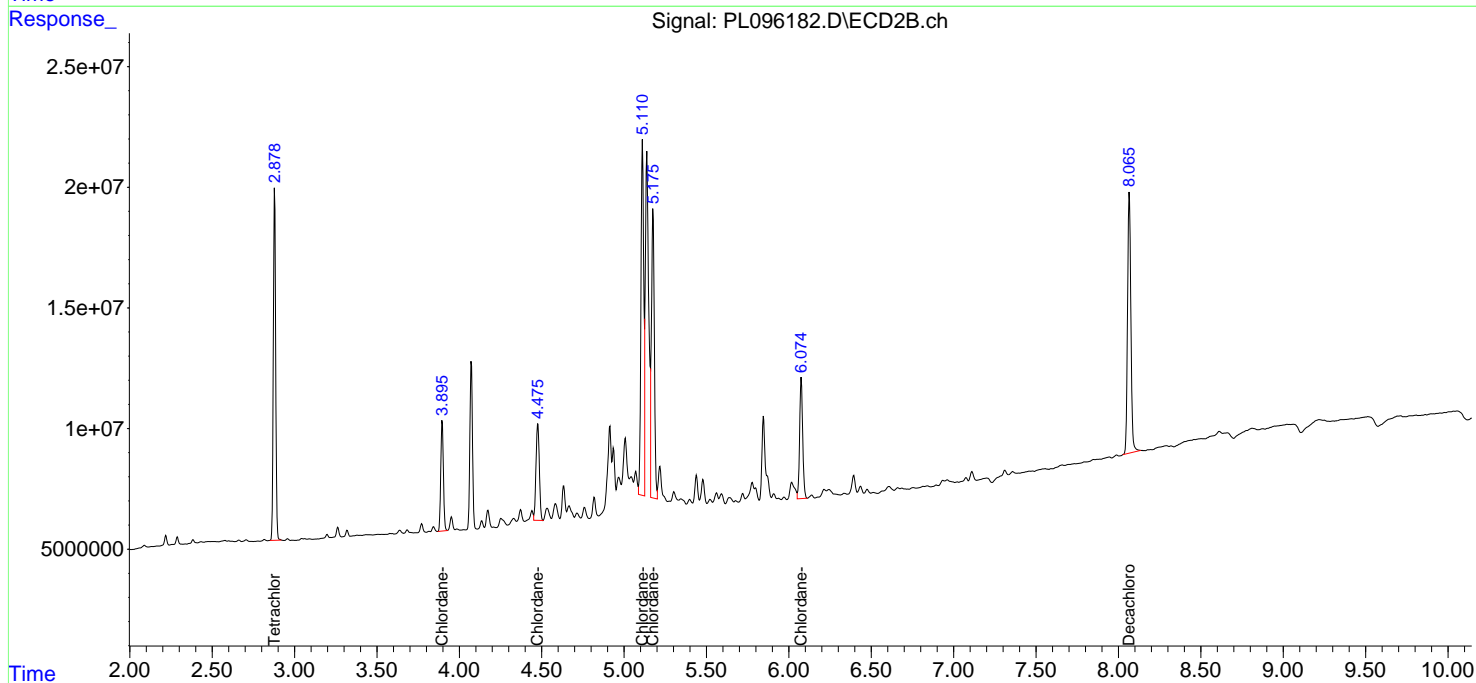
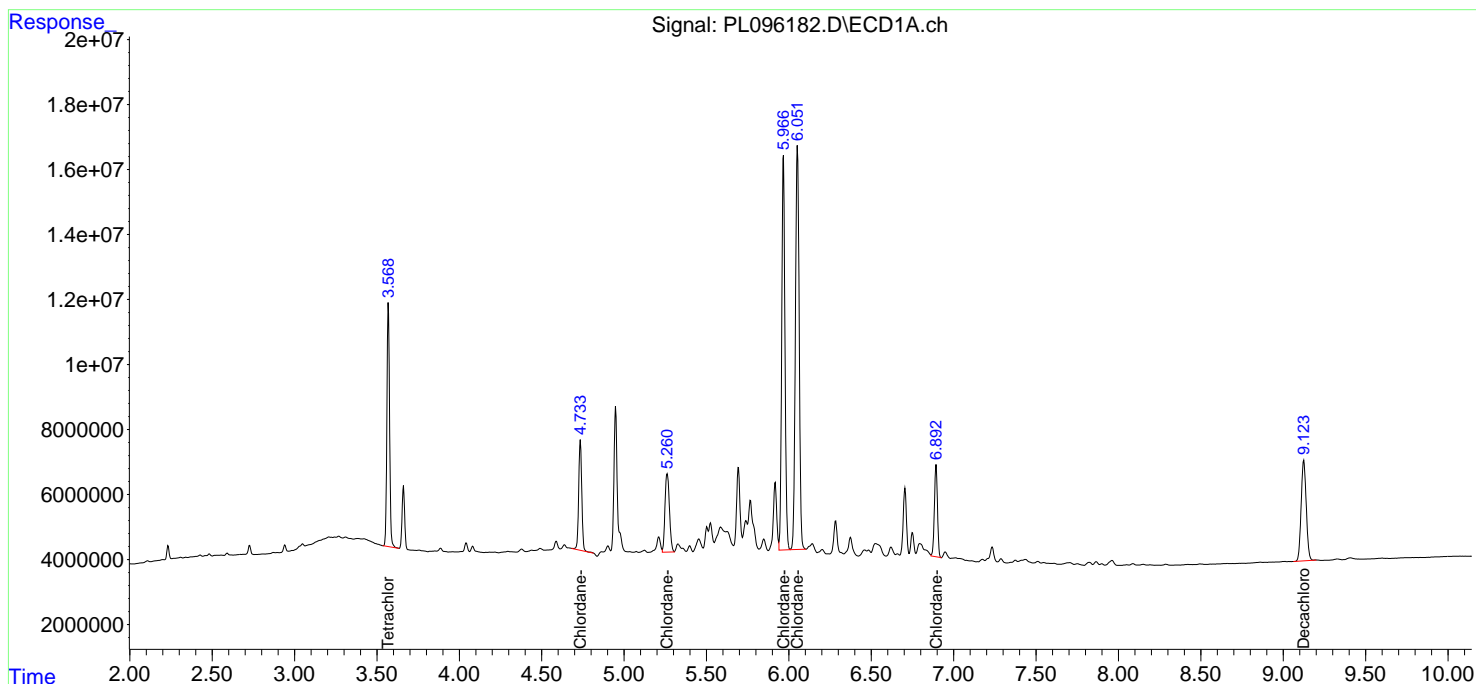
(f)=RT Delta > 1/2 Window (#)=Amounts differ by > 25% (m)=manual int.

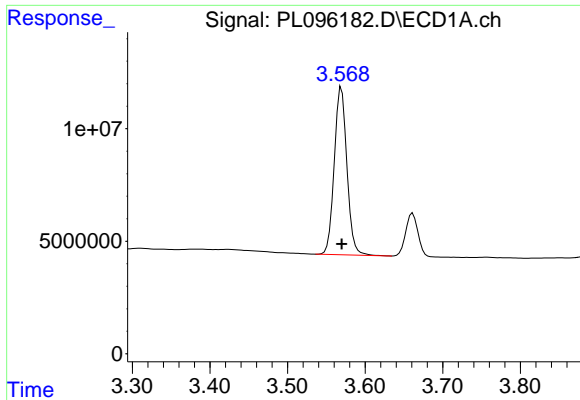
Data Path : Z:\pestpcbsrv\HPCHEM1\ECD_L\Data\PL062625\
 Data File : PL096182.D
 Signal(s) : Signal #1: ECD1A.ch Signal #2: ECD2B.ch
 Acq On : 26 Jun 2025 13:42
 Operator : AR\AJ
 Sample : PCHLORICC250
 Misc :
 ALS Vial : 13 Sample Multiplier: 1

Instrument :
 ECD_L
 ClientSampleId :

Integration File signal 1: autoint1.e
 Integration File signal 2: autoint2.e
 Quant Time: Jun 26 13:51:40 2025
 Quant Method : Z:\pestpcbsrv\HPCHEM1\ECD_L\methods\PL062625.M
 Quant Title : GC Extractables
 QLast Update : Thu Jun 26 13:51:30 2025
 Response via : Initial Calibration
 Integrator: ChemStation

Volume Inj. : 1 µl
 Signal #1 Phase : ZB-MR1 Signal #2 Phase: ZB-MR2
 Signal #1 Info : 30M x 0.32mm x0.5 Signal #2 Info : 30M x 0.32mm x0.25µm

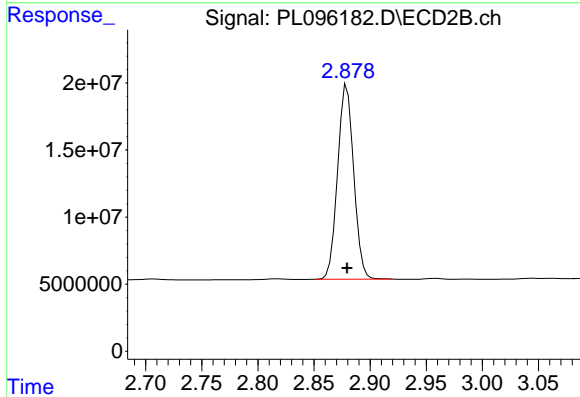




#1 Tetrachloro-m-xylene

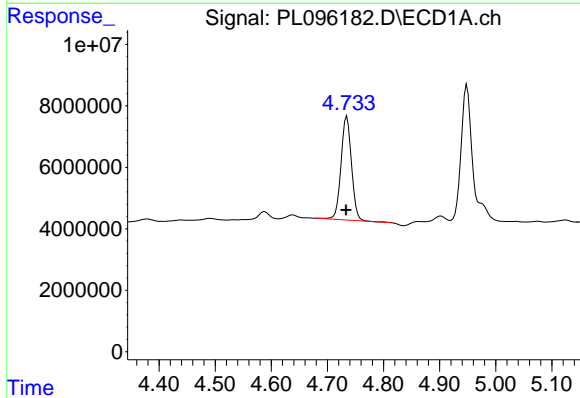
R.T.: 3.570 min
 Delta R.T.: 0.000 min
 Response: 84460033
 Conc: 25.77 ng/ml

Instrument :
 ECD_L
 ClientSampleId :



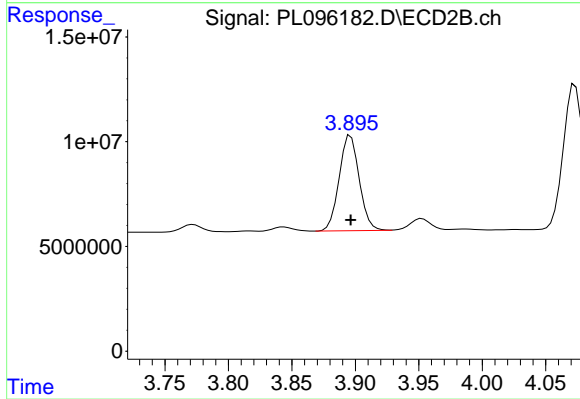
#1 Tetrachloro-m-xylene

R.T.: 2.879 min
 Delta R.T.: 0.000 min
 Response: 145230212
 Conc: 25.30 ng/ml



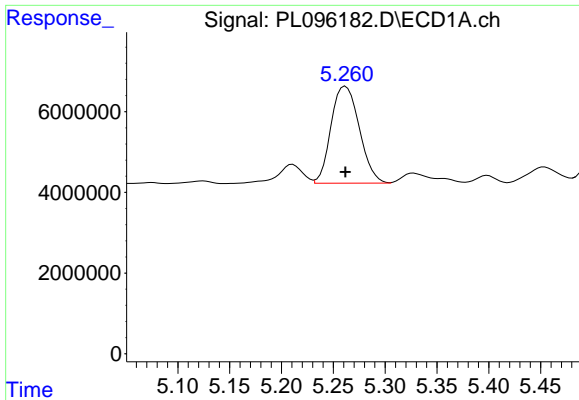
#23 Chlordane-1

R.T.: 4.735 min
 Delta R.T.: 0.001 min
 Response: 43632577
 Conc: 259.23 ng/ml



#23 Chlordane-1

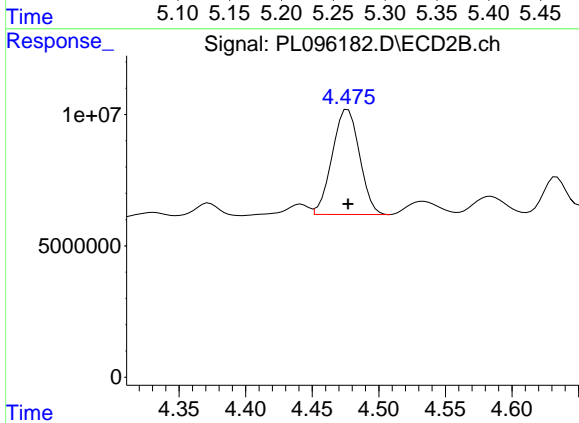
R.T.: 3.896 min
 Delta R.T.: 0.000 min
 Response: 49986496
 Conc: 252.67 ng/ml



#24 Chlordane-2

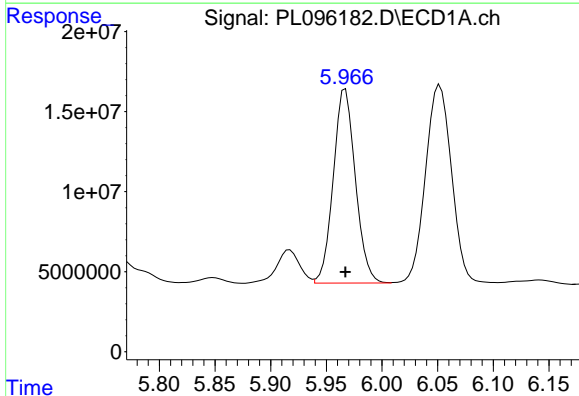
R.T.: 5.262 min
 Delta R.T.: 0.000 min
 Response: 45687016
 Conc: 266.44 ng/ml

Instrument :
 ECD_L
 ClientSampleId :



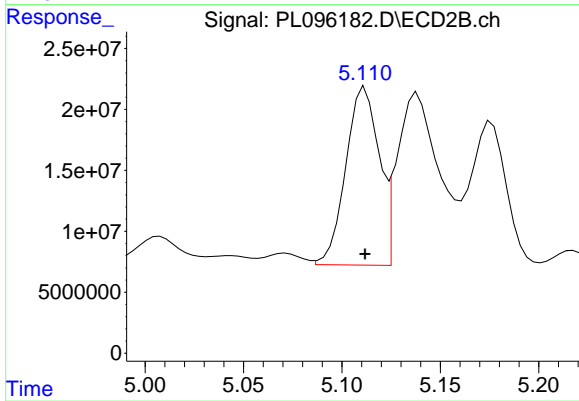
#24 Chlordane-2

R.T.: 4.477 min
 Delta R.T.: 0.000 min
 Response: 57228133
 Conc: 258.59 ng/ml



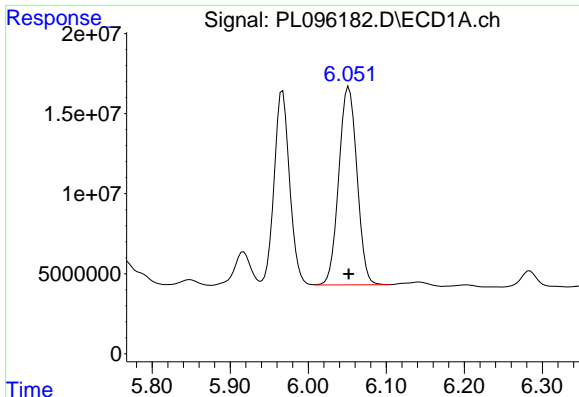
#25 Chlordane-3

R.T.: 5.967 min
 Delta R.T.: 0.000 min
 Response: 167450651
 Conc: 252.69 ng/ml



#25 Chlordane-3

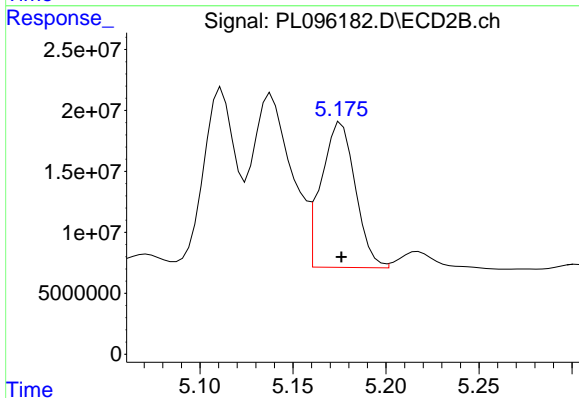
R.T.: 5.112 min
 Delta R.T.: 0.000 min
 Response: 171490701
 Conc: 248.66 ng/ml



#26 Chlordane-4

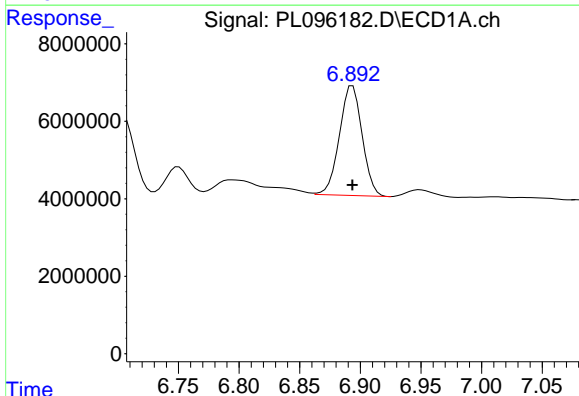
R.T.: 6.052 min
 Delta R.T.: 0.000 min
 Response: 200059855
 Conc: 255.14 ng/ml

Instrument :
 ECD_L
 ClientSampleId :



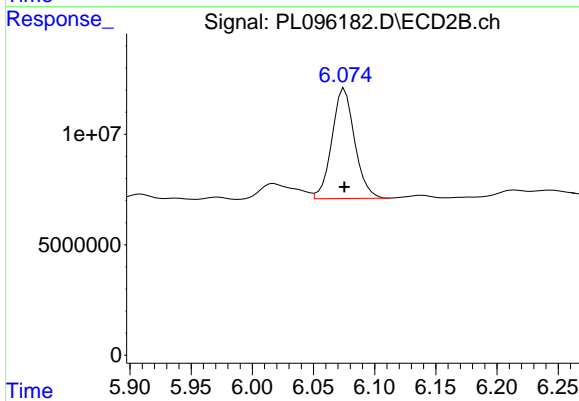
#26 Chlordane-4

R.T.: 5.176 min
 Delta R.T.: 0.000 min
 Response: 152001569
 Conc: 251.26 ng/ml



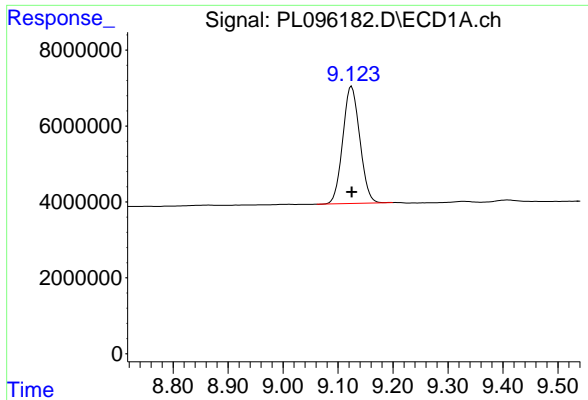
#27 Chlordane-5

R.T.: 6.894 min
 Delta R.T.: 0.000 min
 Response: 36917794
 Conc: 262.75 ng/ml



#27 Chlordane-5

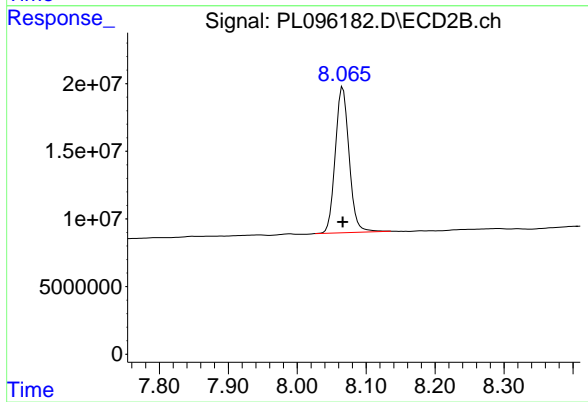
R.T.: 6.075 min
 Delta R.T.: 0.000 min
 Response: 64365490
 Conc: 249.74 ng/ml



#28 Decachlorobiphenyl

R.T.: 9.125 min
Delta R.T.: 0.000 min
Response: 66423879
Conc: 26.80 ng/ml

Instrument :
ECD_L
ClientSampleId :



#28 Decachlorobiphenyl

R.T.: 8.066 min
Delta R.T.: 0.000 min
Response: 150213272
Conc: 26.16 ng/ml