

Data Path : Z:\pestpcbsrv\HPCHEM1\ECD_L\Data\PL062718\
 Data File : PL037488.D
 Signal(s) : Signal #1: ECD1A.ch Signal #2: ECD2B.ch
 Acq On : 27 Jun 2018 22:37
 Operator : UA\AJ
 Sample : PEM
 Misc :
 ALS Vial : 3 Sample Multiplier: 1

Instrument :
 ECD_L
 ClientSampleId :

Integration File signal 1: autoint1.e
 Integration File signal 2: autoint2.e
 Quant Time: Jun 28 01:37:36 2018
 Quant Method : Z:\PESTPCBSRV\HPCHEM1\ECD_L\methods\PL062018.M
 Quant Title : GC Extractables
 QLast Update : Thu Jun 21 02:27:11 2018
 Response via : Initial Calibration
 Integrator: ChemStation

Volume Inj. : 2 µl
 Signal #1 Phase : ZB-MR2 Signal #2 Phase: ZB-MR2
 Signal #1 Info : 30M x 0.32mm x0.5 Signal #2 Info : 30M x 0.32mm x0.25µm

Compound	RT#1	RT#2	Resp#1	Resp#2	ng/ml	ng/ml

System Monitoring Compounds						
1) SA Tetrachlo...	3.335	3.937	147.8E6	53009213	18.684	19.159
28) SA Decachlor...	8.016	8.949	131.7E6	40633838	21.827	20.481
Target Compounds						
2) A alpha-BHC	3.765	4.315	112.1E6	34718839	9.158	8.948
3) MA gamma-BHC...	4.042	4.596	104.5E6	32378141	10.129	9.375
4) MA Heptachlor	4.296	0.000	47400752	0	4.627	N.D. #
6) B beta-BHC	4.296	4.756	47400752	15365922	10.393	9.528
10) B gamma-Chl...	5.163f	0.000	10487996	0	1.120	N.D. #
14) MA Endrin	5.831	6.610	364.7E6	103.6E6	46.298	45.039
16) A 4,4'-DDD	5.967	6.732	24644117	6199721	3.753	3.020
17) MA 4,4'-DDT	6.201	7.033	680.8E6	205.2E6	105.444	96.855
20) A Methoxychlor	6.750	7.487	795.9E6	268.2E6	234.151	239.562
21) B Endrin ke...	6.969	0.000	11172402	0	1.571	N.D. #
25) Chlordane-3	5.163	0.000	10487996	0	9.867	N.D. #
27) Chlordane-5	5.831	0.000	364.7E6	0	2786.907	N.D. #

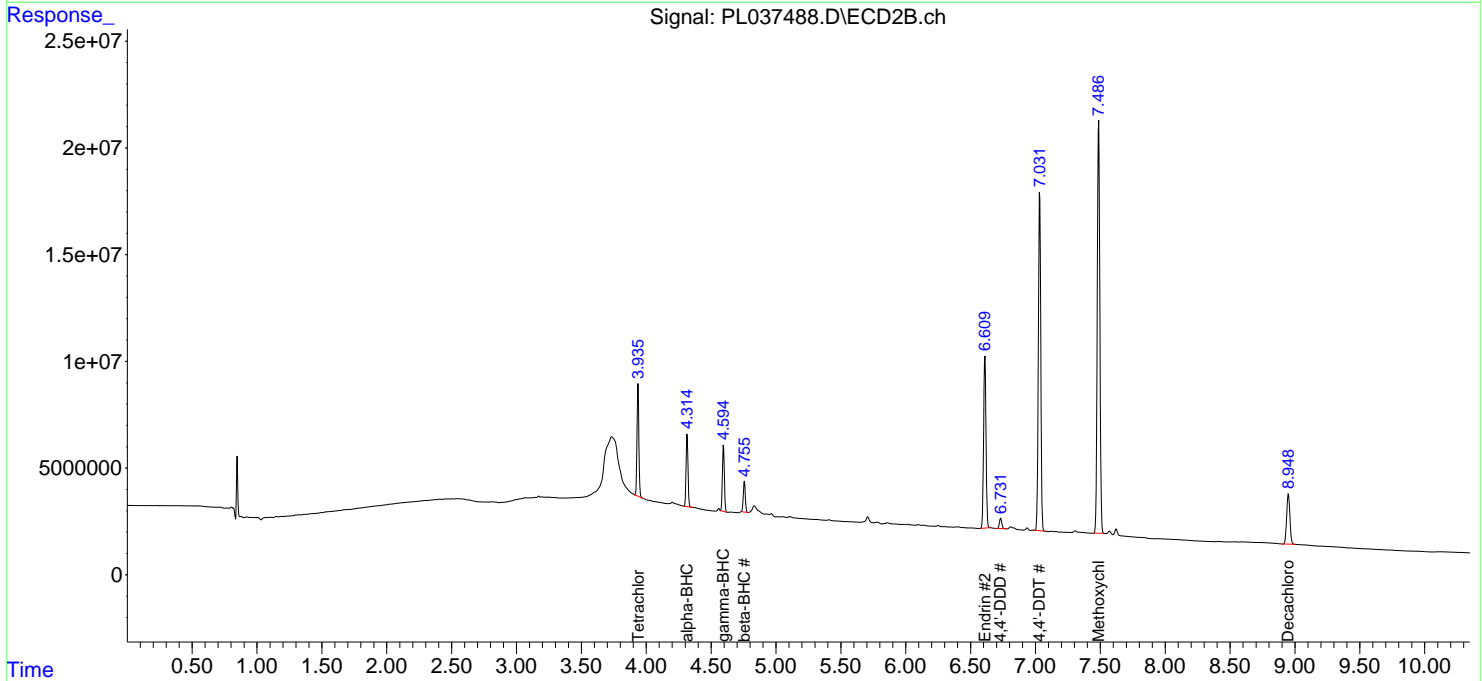
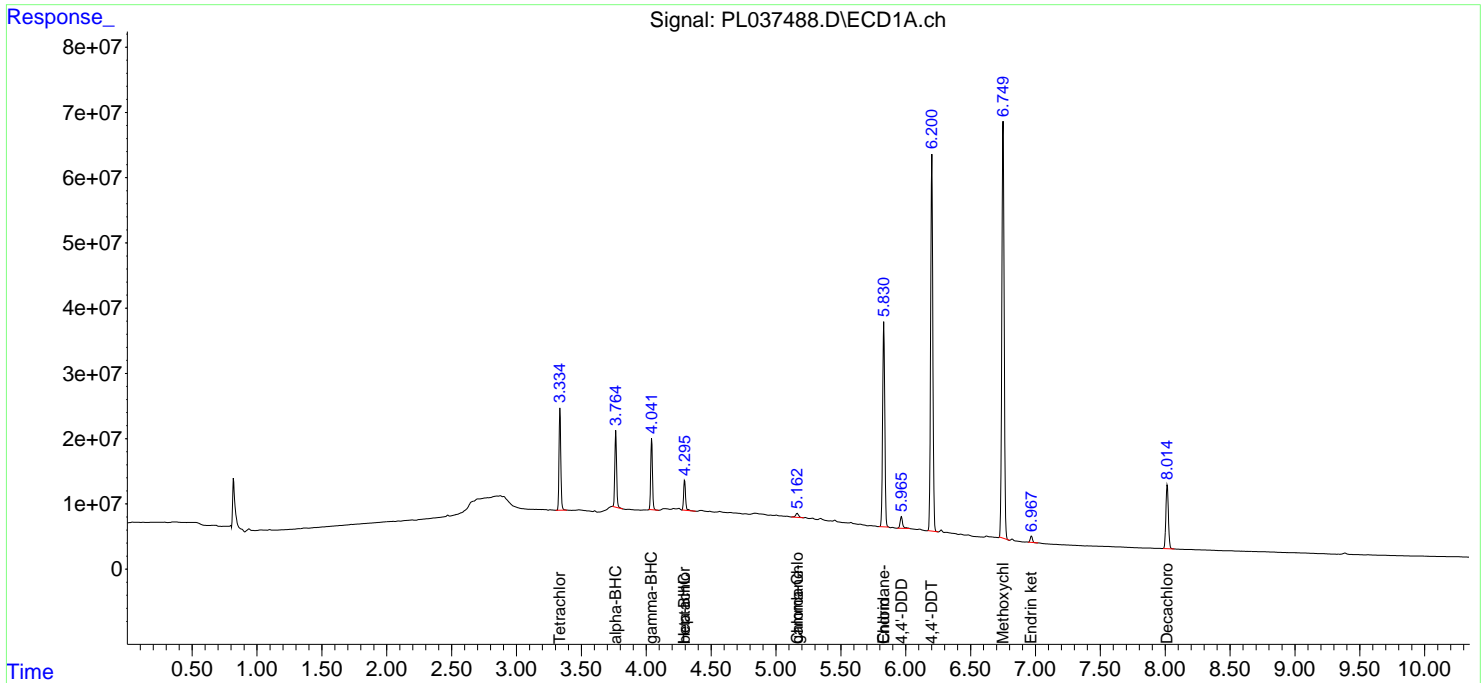
(f)=RT Delta > 1/2 Window (#)=Amounts differ by > 25% (m)=manual int.

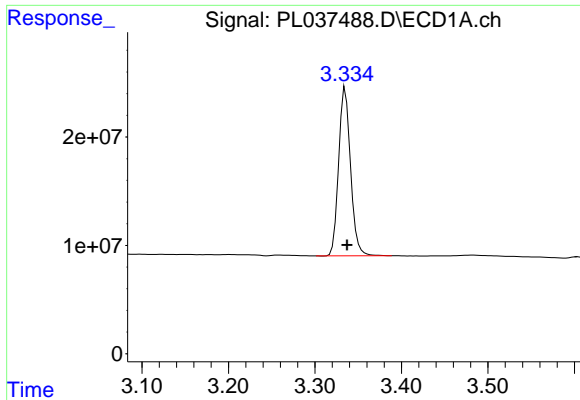
Data Path : Z:\pestpcbsrv\HPCHEM1\ECD_L\Data\PL062718\
 Data File : PL037488.D
 Signal(s) : Signal #1: ECD1A.ch Signal #2: ECD2B.ch
 Acq On : 27 Jun 2018 22:37
 Operator : UA\AJ
 Sample : PEM
 Misc :
 ALS Vial : 3 Sample Multiplier: 1

Instrument :
 ECD_L
 ClientSampled :

Integration File signal 1: autoint1.e
 Integration File signal 2: autoint2.e
 Quant Time: Jun 28 01:37:36 2018
 Quant Method : Z:\PESTPCBSRV\HPCHEM1\ECD_L\methods\PL062018.M
 Quant Title : GC Extractables
 QLast Update : Thu Jun 21 02:27:11 2018
 Response via : Initial Calibration
 Integrator: ChemStation

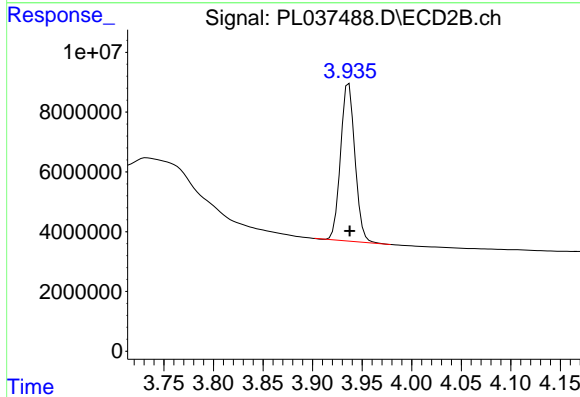
Volume Inj. : 2 µl
 Signal #1 Phase : ZB-MR1 Signal #2 Phase: ZB-MR2
 Signal #1 Info : 30M x 0.32mm x0.5 Signal #2 Info : 30M x 0.32mm x0.25µm



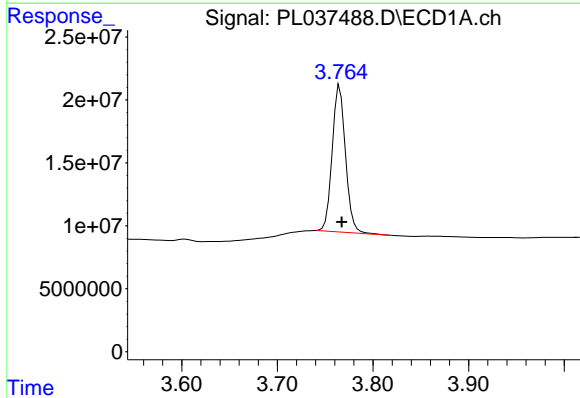


#1 Tetrachloro-m-xylene
 R.T.: 3.335 min
 Delta R.T.: -0.002 min
 Response: 147797173
 Conc: 18.68 ng/ml

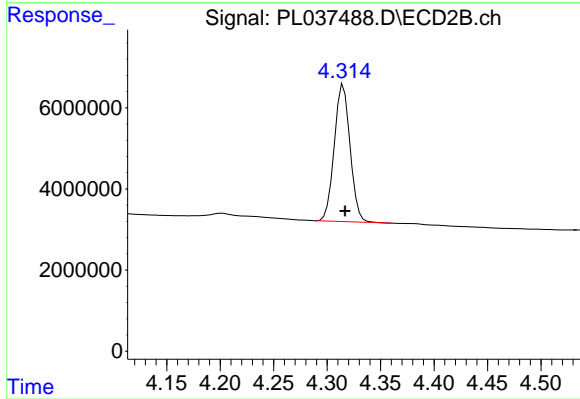
Instrument :
 ECD_L
 ClientSampled :



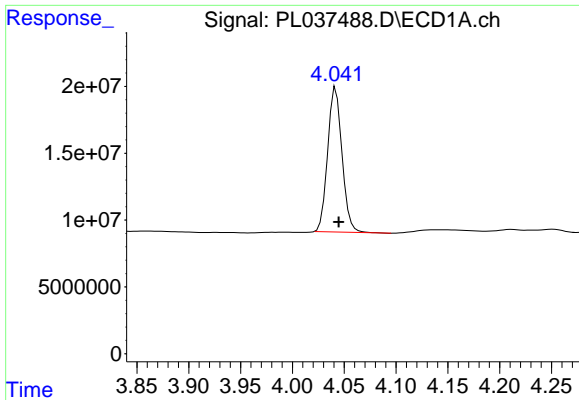
#1 Tetrachloro-m-xylene
 R.T.: 3.937 min
 Delta R.T.: 0.000 min
 Response: 53009213
 Conc: 19.16 ng/ml



#2 alpha-BHC
 R.T.: 3.765 min
 Delta R.T.: -0.002 min
 Response: 112125701
 Conc: 9.16 ng/ml

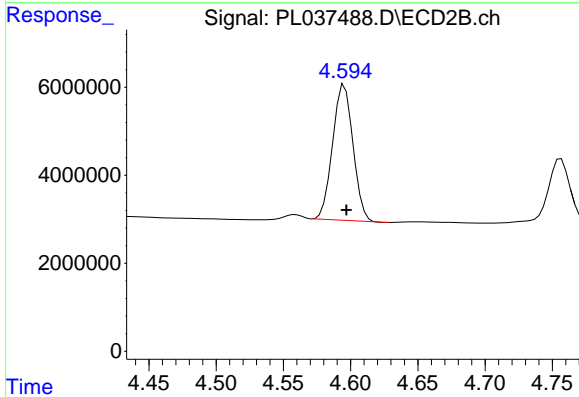


#2 alpha-BHC
 R.T.: 4.315 min
 Delta R.T.: -0.001 min
 Response: 34718839
 Conc: 8.95 ng/ml

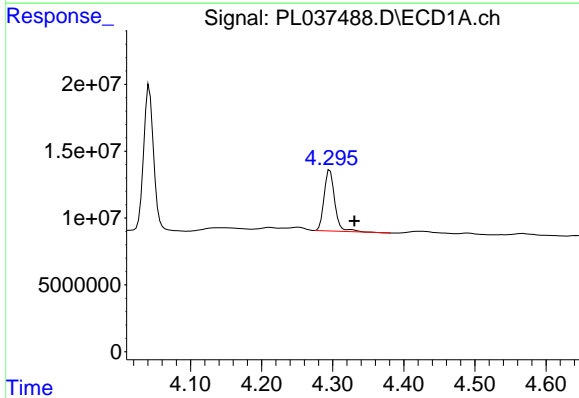


#3 gamma-BHC (Lindane)
 R.T.: 4.042 min
 Delta R.T.: -0.003 min
 Response: 104475022
 Conc: 10.13 ng/ml

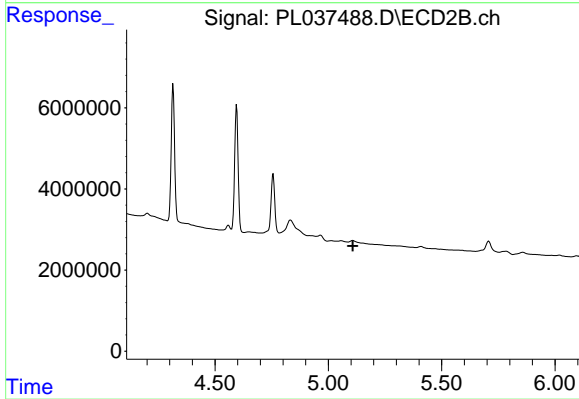
Instrument :
 ECD_L
 ClientSampleId :



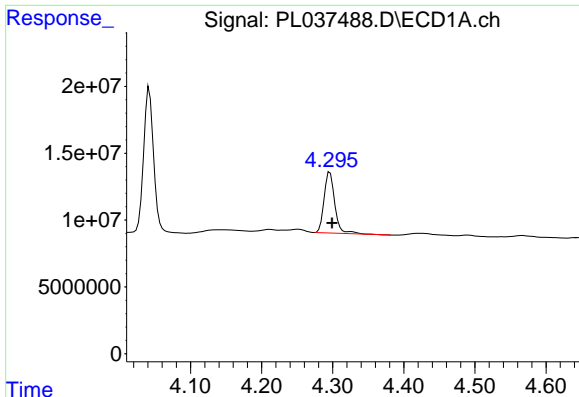
#3 gamma-BHC (Lindane)
 R.T.: 4.596 min
 Delta R.T.: -0.001 min
 Response: 32378141
 Conc: 9.37 ng/ml



#4 Heptachlor
 R.T.: 4.296 min
 Delta R.T.: -0.034 min
 Response: 47400752
 Conc: 4.63 ng/ml



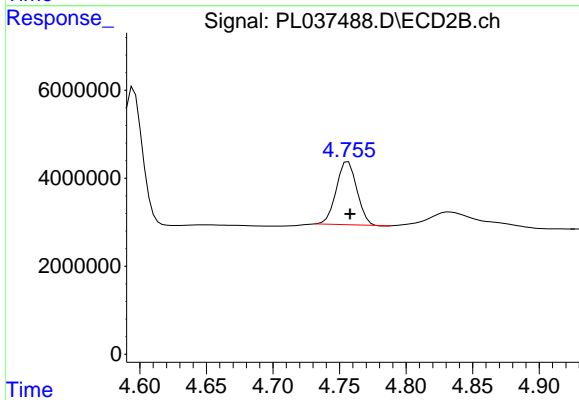
#4 Heptachlor
 R.T.: 0.000 min
 Exp R.T. : 5.108 min
 Response: 0
 Conc: N.D.



#6 beta-BHC

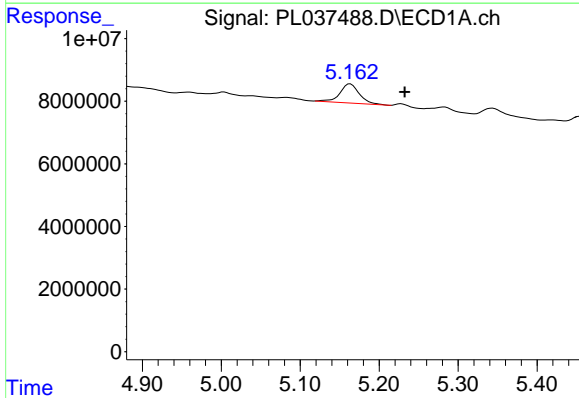
R.T.: 4.296 min
 Delta R.T.: -0.003 min
 Response: 47400752
 Conc: 10.39 ng/ml

Instrument :
 ECD_L
 ClientSampled :



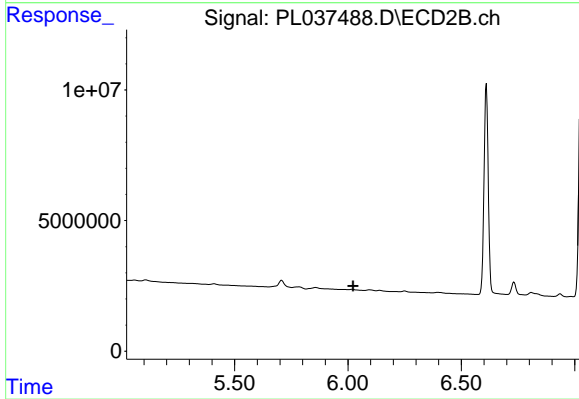
#6 beta-BHC

R.T.: 4.756 min
 Delta R.T.: -0.001 min
 Response: 15365922
 Conc: 9.53 ng/ml



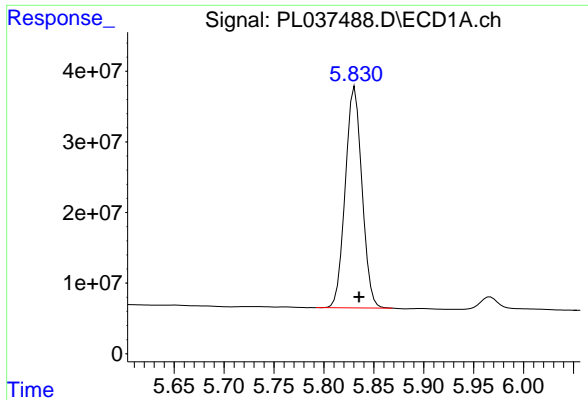
#10 gamma-Chlordane

R.T.: 5.163 min
 Delta R.T.: -0.069 min
 Response: 10487996
 Conc: 1.12 ng/ml



#10 gamma-Chlordane

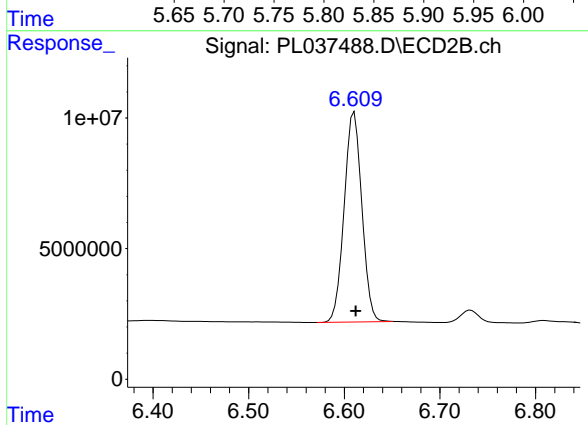
R.T.: 0.000 min
 Exp R.T. : 6.023 min
 Response: 0
 Conc: N.D.



#14 Endrin

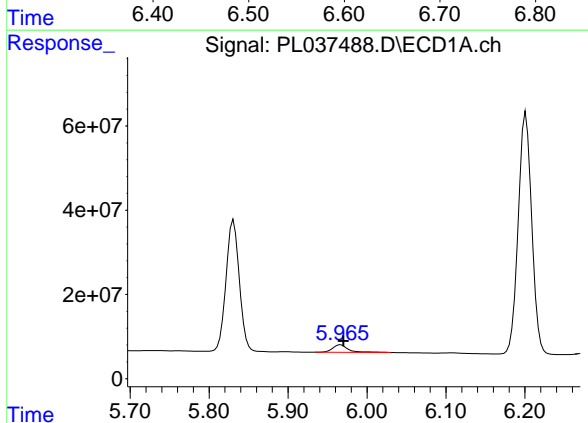
R.T.: 5.831 min
 Delta R.T.: -0.004 min
 Response: 364717651
 Conc: 46.30 ng/ml

Instrument :
 ECD_L
 ClientSampled :



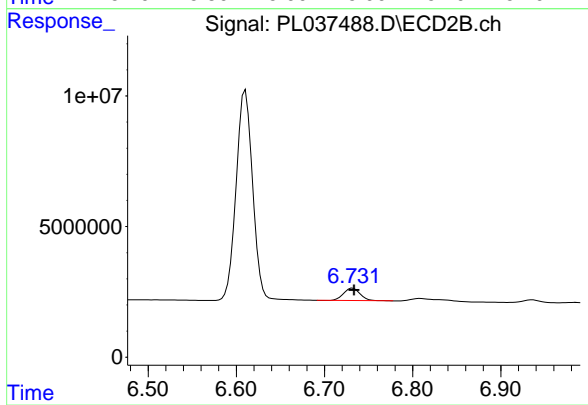
#14 Endrin

R.T.: 6.610 min
 Delta R.T.: -0.002 min
 Response: 103556076
 Conc: 45.04 ng/ml



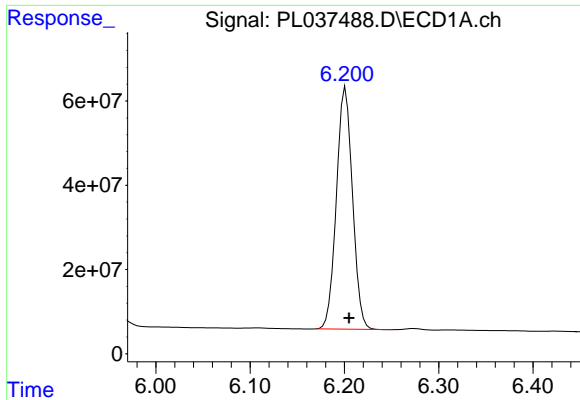
#16 4,4'-DDD

R.T.: 5.967 min
 Delta R.T.: -0.004 min
 Response: 24644117
 Conc: 3.75 ng/ml



#16 4,4'-DDD

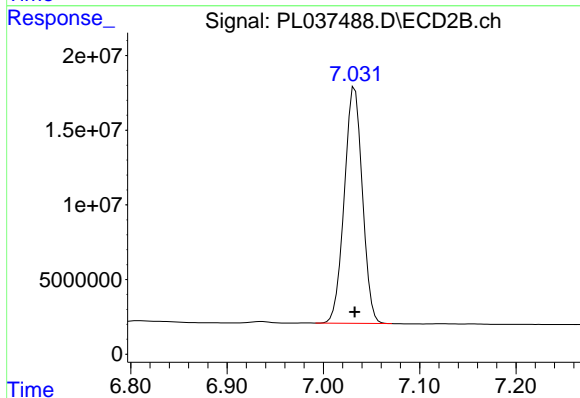
R.T.: 6.732 min
 Delta R.T.: -0.002 min
 Response: 6199721
 Conc: 3.02 ng/ml



#17 4,4'-DDT

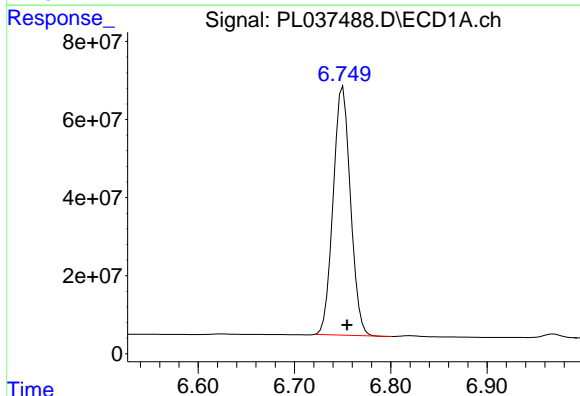
R.T.: 6.201 min
Delta R.T.: -0.004 min
Response: 680779293
Conc: 105.44 ng/ml

Instrument :
ECD_L
ClientSampleId :



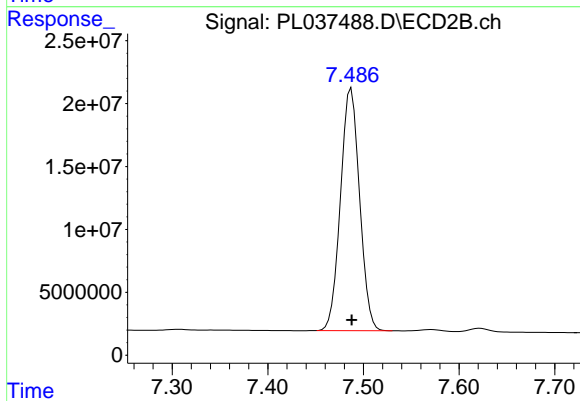
#17 4,4'-DDT

R.T.: 7.033 min
Delta R.T.: 0.000 min
Response: 205155059
Conc: 96.85 ng/ml



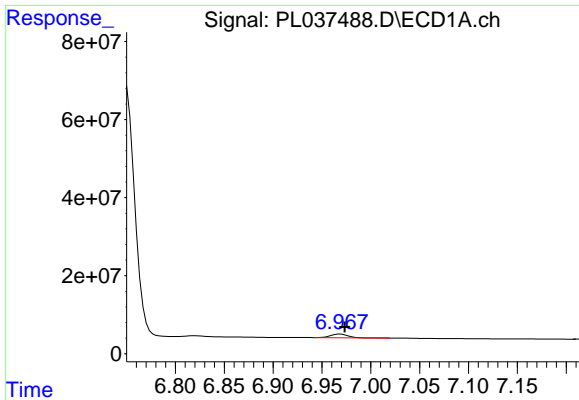
#20 Methoxychlor

R.T.: 6.750 min
Delta R.T.: -0.004 min
Response: 795876448
Conc: 234.15 ng/ml



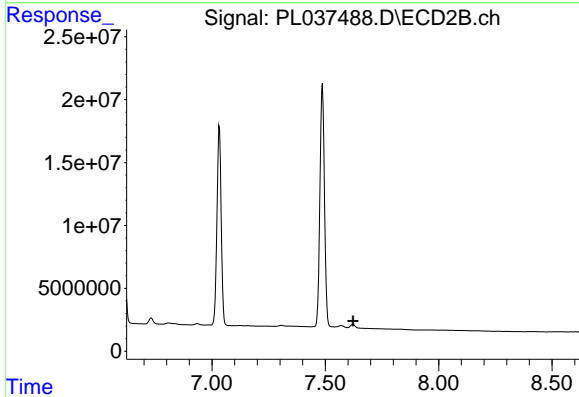
#20 Methoxychlor

R.T.: 7.487 min
Delta R.T.: 0.000 min
Response: 268153003
Conc: 239.56 ng/ml

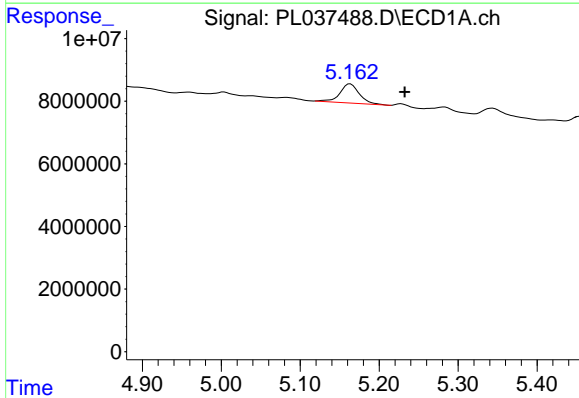


#21 Endrin ketone
 R.T.: 6.969 min
 Delta R.T.: -0.005 min
 Response: 11172402
 Conc: 1.57 ng/ml

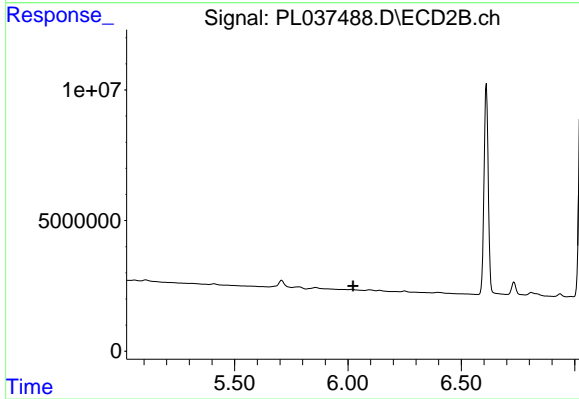
Instrument :
 ECD_L
 ClientSampled :



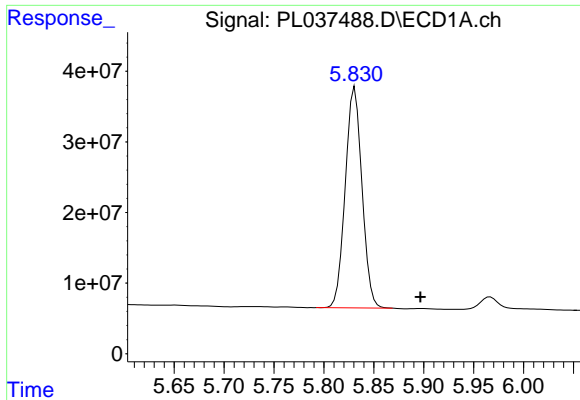
#21 Endrin ketone
 R.T.: 0.000 min
 Exp R.T. : 7.623 min
 Response: 0
 Conc: N.D.



#25 Chlordane-3
 R.T.: 5.163 min
 Delta R.T.: -0.069 min
 Response: 10487996
 Conc: 9.87 ng/ml

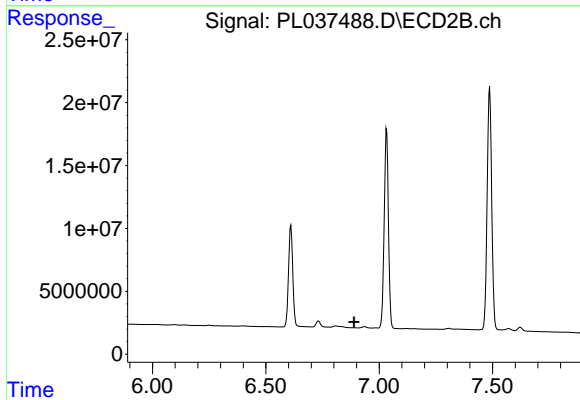


#25 Chlordane-3
 R.T.: 0.000 min
 Exp R.T. : 6.022 min
 Response: 0
 Conc: N.D.

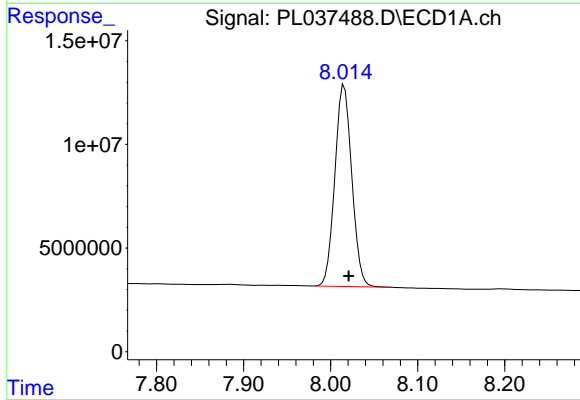


#27 Chlordane-5
 R.T.: 5.831 min
 Delta R.T.: -0.066 min
 Response: 364717651
 Conc: 2786.91 ng/ml

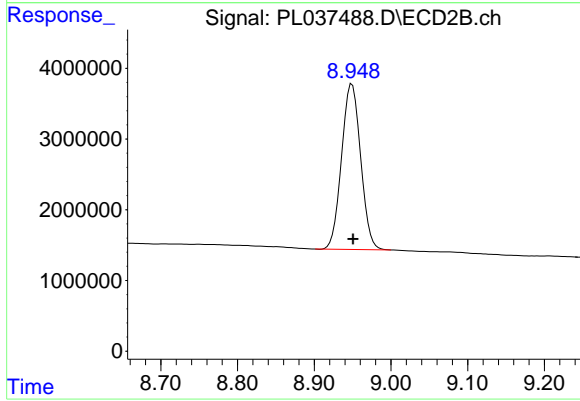
Instrument :
 ECD_L
 ClientSampled :



#27 Chlordane-5
 R.T.: 0.000 min
 Exp R.T. : 6.889 min
 Response: 0
 Conc: N.D.



#28 Decachlorobiphenyl
 R.T.: 8.016 min
 Delta R.T.: -0.005 min
 Response: 131704729
 Conc: 21.83 ng/ml



#28 Decachlorobiphenyl
 R.T.: 8.949 min
 Delta R.T.: -0.002 min
 Response: 40633838
 Conc: 20.48 ng/ml