

Data Path : Z:\pestpcbsrv\HPCHEM1\ECD_L\Data\PL062718\
 Data File : PL037453.D
 Signal(s) : Signal #1: ECD1A.ch Signal #2: ECD2B.ch
 Acq On : 27 Jun 2018 12:53
 Operator : UA\AJ
 Sample : I.BLK
 Misc :
 ALS Vial : 2 Sample Multiplier: 1

Instrument :
 ECD_L
 ClientSampleId :
 I.BLK

Integration File signal 1: autoint1.e
 Integration File signal 2: autoint2.e
 Quant Time: Jun 28 01:30:12 2018
 Quant Method : Z:\PESTPCBSRV\HPCHEM1\ECD_L\methods\PL062018.M
 Quant Title : GC Extractables
 QLast Update : Thu Jun 21 02:27:11 2018
 Response via : Initial Calibration
 Integrator: ChemStation

Volume Inj. : 2 µl
 Signal #1 Phase : ZB-MR1 Signal #2 Phase: ZB-MR2
 Signal #1 Info : 30M x 0.32mm x0.5 Signal #2 Info : 30M x 0.32mm x0.25µm

Compound	RT#1	RT#2	Resp#1	Resp#2	ng/ml	ng/ml

System Monitoring Compounds						
1) SA Tetrachlo...	3.336	3.936	129.6E6	45205071	16.388	16.339
28) SA Decachlor...	8.016	8.947	122.9E6	37313215	20.370	18.808

Target Compounds

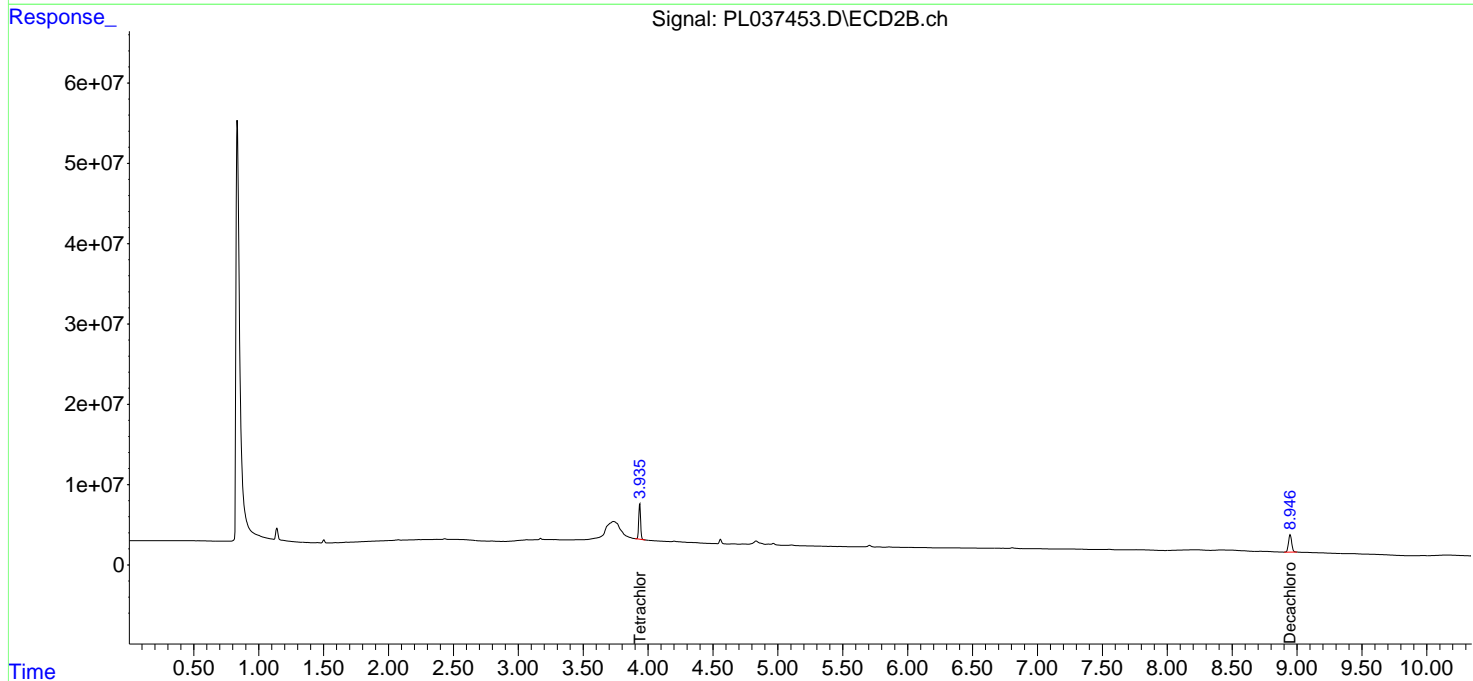
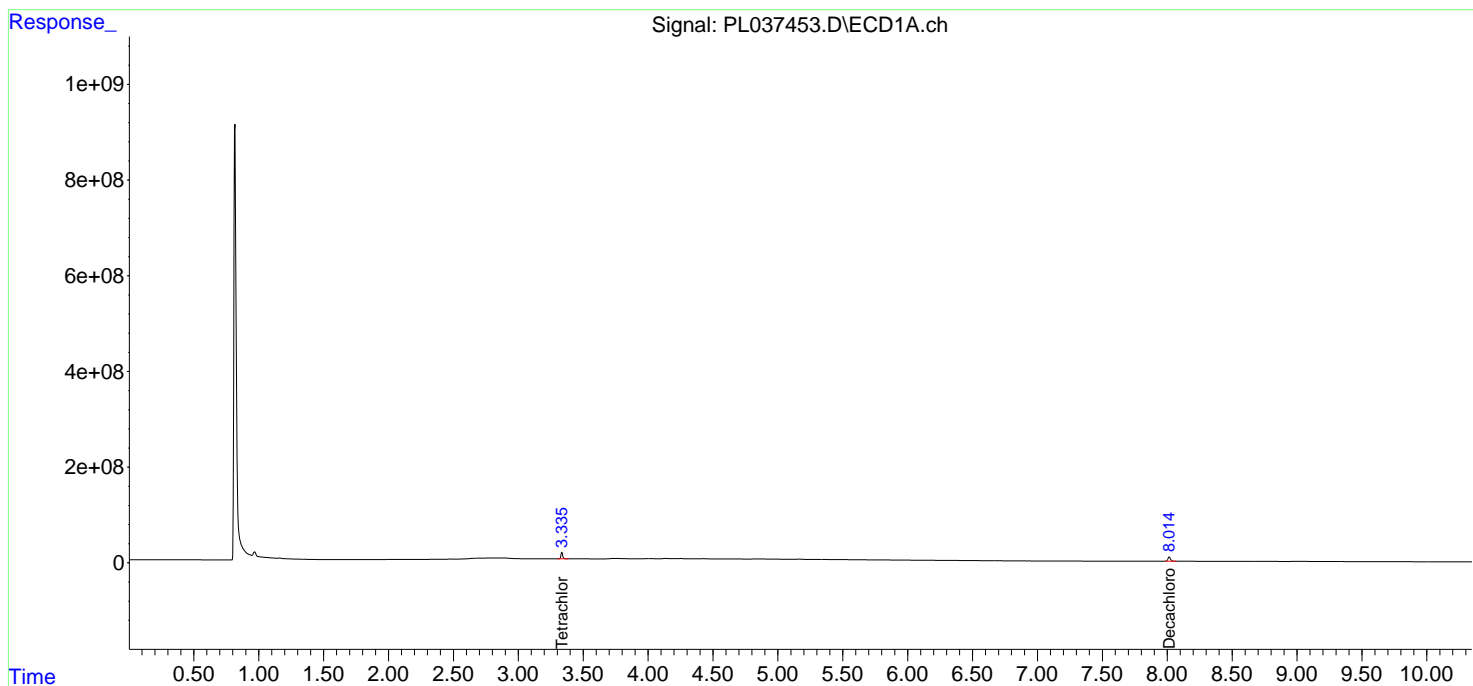
(f)=RT Delta > 1/2 Window (#)=Amounts differ by > 25% (m)=manual int.

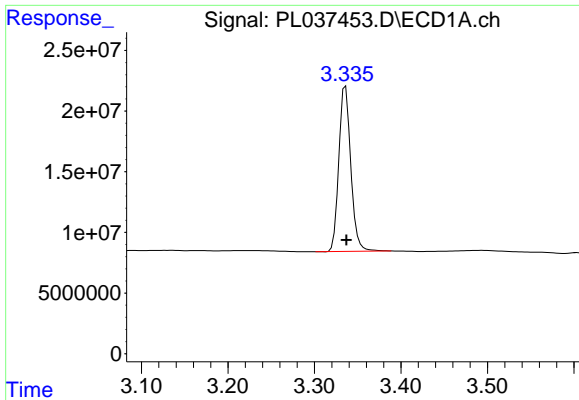
Data Path : Z:\pestpcbsrv\HPCHEM1\ECD_L\Data\PL062718\
 Data File : PL037453.D
 Signal(s) : Signal #1: ECD1A.ch Signal #2: ECD2B.ch
 Acq On : 27 Jun 2018 12:53
 Operator : UA\AJ
 Sample : I.BLK
 Misc :
 ALS Vial : 2 Sample Multiplier: 1

Instrument :
 ECD_L
 ClientSampled :
 I.BLK

Integration File signal 1: autoint1.e
 Integration File signal 2: autoint2.e
 Quant Time: Jun 28 01:30:12 2018
 Quant Method : Z:\PESTPCBSRV\HPCHEM1\ECD_L\methods\PL062018.M
 Quant Title : GC Extractables
 QLast Update : Thu Jun 21 02:27:11 2018
 Response via : Initial Calibration
 Integrator: ChemStation

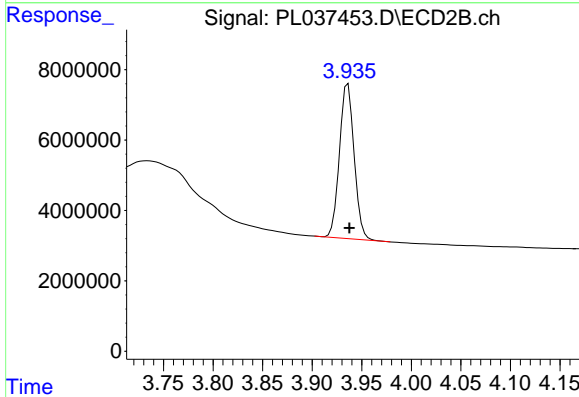
Volume Inj. : 2 µl
 Signal #1 Phase : ZB-MR1 Signal #2 Phase: ZB-MR2
 Signal #1 Info : 30M x 0.32mm x0.5 Signal #2 Info : 30M x 0.32mm x0.25µm



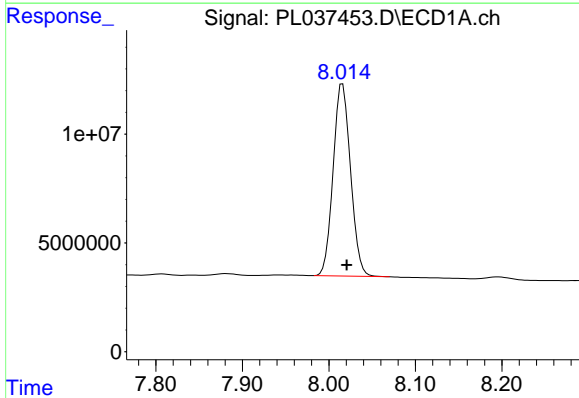


#1 Tetrachloro-m-xylene
 R.T.: 3.336 min
 Delta R.T.: 0.000 min
 Response: 129635632
 Conc: 16.39 ng/ml

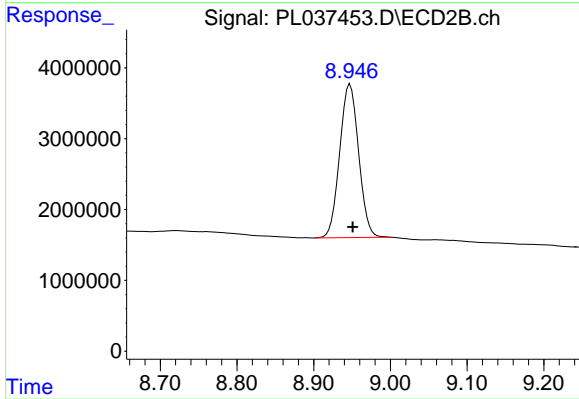
Instrument :
 ECD_L
 ClientSampled :
 I.BLK



#1 Tetrachloro-m-xylene
 R.T.: 3.936 min
 Delta R.T.: -0.002 min
 Response: 45205071
 Conc: 16.34 ng/ml



#28 Decachlorobiphenyl
 R.T.: 8.016 min
 Delta R.T.: -0.005 min
 Response: 122914669
 Conc: 20.37 ng/ml



#28 Decachlorobiphenyl
 R.T.: 8.947 min
 Delta R.T.: -0.003 min
 Response: 37313215
 Conc: 18.81 ng/ml