

Data Path : Z:\pestpcbsrv\HPCHEM1\ECD_L\Data\PL062719\
 Data File : PL049971.D
 Signal(s) : Signal #1: ECD1A.ch Signal #2: ECD2B.ch
 Acq On : 28 Jun 2019 00:37
 Operator : SM\AJ
 Sample : K3552-03
 Misc :
 ALS Vial : 53 Sample Multiplier: 1

Instrument :
 ECD_L
 ClientSampleId :
 M-2

Integration File signal 1: autoint1.e
 Integration File signal 2: autoint2.e
 Quant Time: Jun 28 01:32:01 2019
 Quant Method : Z:\pestpcbsrv\HPCHEM1\ECD_L\methods\PL062019.M
 Quant Title : GC Extractables
 QLast Update : Fri Jun 21 02:23:20 2019
 Response via : Initial Calibration
 Integrator: ChemStation

Volume Inj. : 1 µl
 Signal #1 Phase : ZB-MR2 Signal #2 Phase: ZB-MR1
 Signal #1 Info : 30M x 0.32mm x0.2 Signal #2 Info : 30M x 0.32mm x0.5µm

Compound	RT#1	RT#2	Resp#1	Resp#2	ng/ml	ng/ml

System Monitoring Compounds						
1) SA Tetrachlo...	3.322	3.933	248.3E6	66958453	22.021	21.869
28) SA Decachlor...	7.986	8.965	198.0E6	58952387	15.583	17.561

Target Compounds

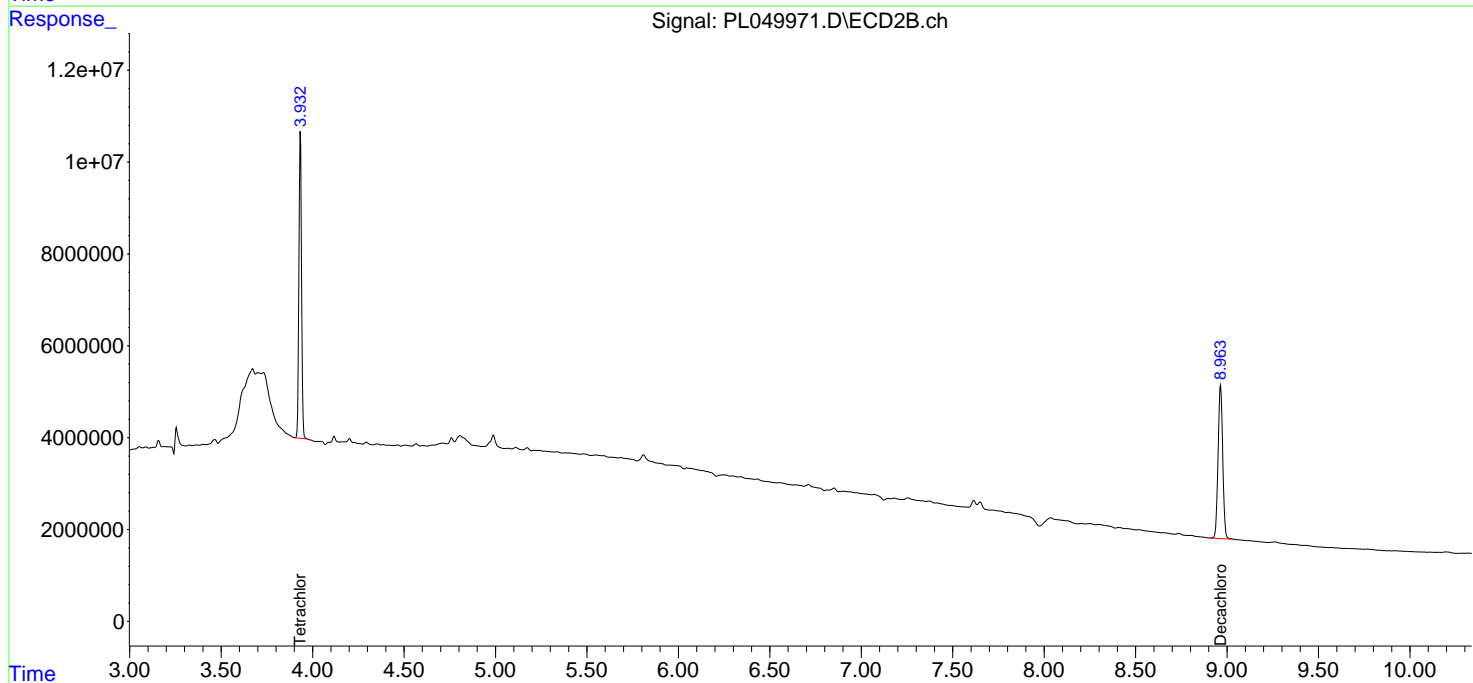
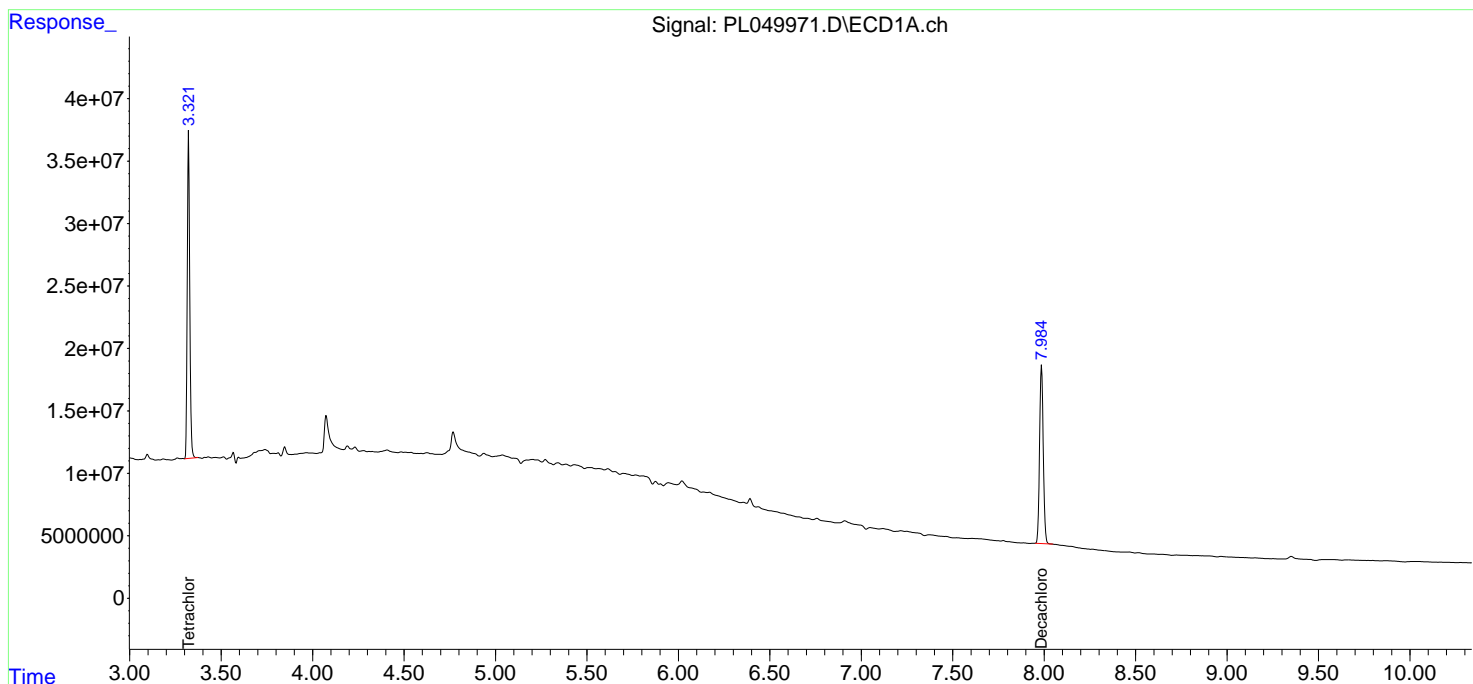
(f)=RT Delta > 1/2 Window (#)=Amounts differ by > 25% (m)=manual int.

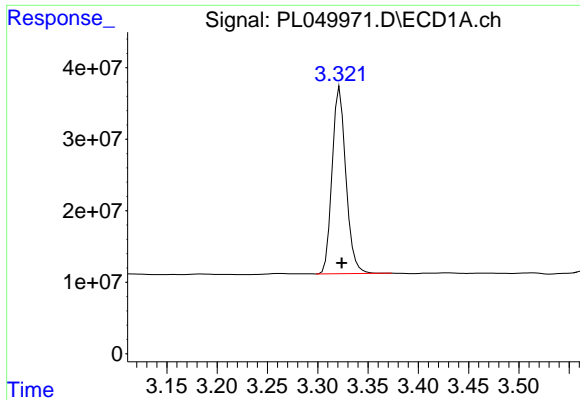
Data Path : Z:\pestpcbsrv\HPCHEM1\ECD_L\Data\PL062719\
 Data File : PL049971.D
 Signal(s) : Signal #1: ECD1A.ch Signal #2: ECD2B.ch
 Acq On : 28 Jun 2019 00:37
 Operator : SM\AJ
 Sample : K3552-03
 Misc :
 ALS Vial : 53 Sample Multiplier: 1

Instrument :
 ECD_L
 ClientSampleId :
 M-2

Integration File signal 1: autoint1.e
 Integration File signal 2: autoint2.e
 Quant Time: Jun 28 01:32:01 2019
 Quant Method : Z:\pestpcbsrv\HPCHEM1\ECD_L\methods\PL062019.M
 Quant Title : GC Extractables
 QLast Update : Fri Jun 21 02:23:20 2019
 Response via : Initial Calibration
 Integrator: ChemStation

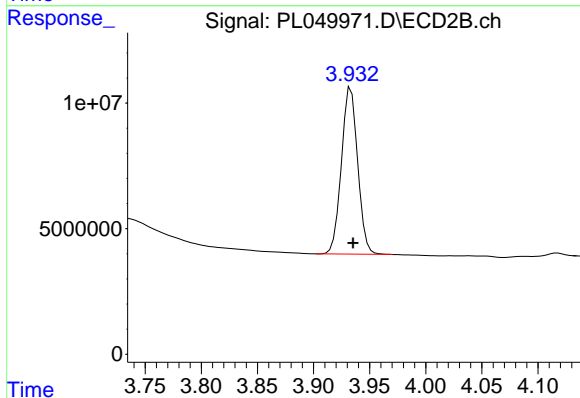
Volume Inj. : 1 µl
 Signal #1 Phase : ZB-MR2 Signal #2 Phase: ZB-MR1
 Signal #1 Info : 30M x 0.32mm x0.2 Signal #2 Info : 30M x 0.32mm x0.5µm



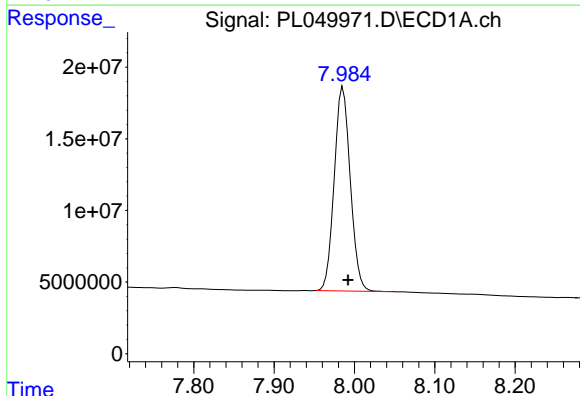


#1 Tetrachloro-m-xylene
 R.T.: 3.322 min
 Delta R.T.: -0.002 min
 Response: 248343614
 Conc: 22.02 ng/ml

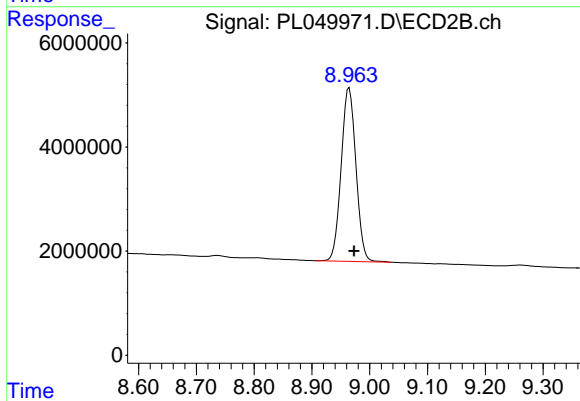
Instrument :
 ECD_L
 ClientSampled :
 M-2



#1 Tetrachloro-m-xylene
 R.T.: 3.933 min
 Delta R.T.: -0.002 min
 Response: 66958453
 Conc: 21.87 ng/ml



#28 Decachlorobiphenyl
 R.T.: 7.986 min
 Delta R.T.: -0.006 min
 Response: 198002861
 Conc: 15.58 ng/ml



#28 Decachlorobiphenyl
 R.T.: 8.965 min
 Delta R.T.: -0.008 min
 Response: 58952387
 Conc: 17.56 ng/ml