

Data Path : Z:\pestpcbsrv\HPCHEM1\ECD_L\Data\PL062725\
 Data File : PL096194.D
 Signal(s) : Signal #1: ECD1A.ch Signal #2: ECD2B.ch
 Acq On : 27 Jun 2025 12:44
 Operator : AR\AJ
 Sample : PEM
 Misc :
 ALS Vial : 3 Sample Multiplier: 1

Instrument :
 ECD_L
 ClientSampleId :

Integration File signal 1: autoint1.e
 Integration File signal 2: autoint2.e
 Quant Time: Jun 27 23:15:02 2025
 Quant Method : Z:\pestpcbsrv\HPCHEM1\ECD_L\methods\PL062625.M
 Quant Title : GC Extractables
 QLast Update : Thu Jun 26 18:02:32 2025
 Response via : Initial Calibration
 Integrator: ChemStation

Volume Inj. : 1 µl
 Signal #1 Phase : ZB-MR1 Signal #2 Phase: ZB-MR2
 Signal #1 Info : 30M x 0.32mm x0.5 Signal #2 Info : 30M x 0.32mm x0.25µm

Compound	RT#1	RT#2	Resp#1	Resp#2	ng/ml	ng/ml

System Monitoring Compounds						
1) SA Tetrachlo...	3.570	2.880	77153061	99806728	23.140	17.353 #
28) SA Decachlor...	9.135	8.066	63845326	127.7E6	24.897	21.342
Target Compounds						
2) A alpha-BHC	4.020	3.389	57955698	71254066	11.696	10.909
3) MA gamma-BHC...	4.352	3.722	55574508	68753975	11.988	11.092
6) B beta-BHC	4.539	4.017	24050180	31506093	12.142	11.547
10) B gamma-Chl...	0.000	5.136f	0	1456054	N.D.	0.242 #
14) MA Endrin	6.597	5.775	191.2E6	305.9E6	60.168	57.356
16) A 4,4'-DDD	0.000	5.921	0	4435924	N.D.	0.912 #
17) MA 4,4'-DDT	7.047	6.176	336.4E6	609.3E6	115.107	118.710
20) A Methoxychlor	7.526	6.751	401.9E6	723.2E6	266.238	253.403
25) Chlordane-3	0.000	5.136f	0	1456054	N.D.	2.122 #

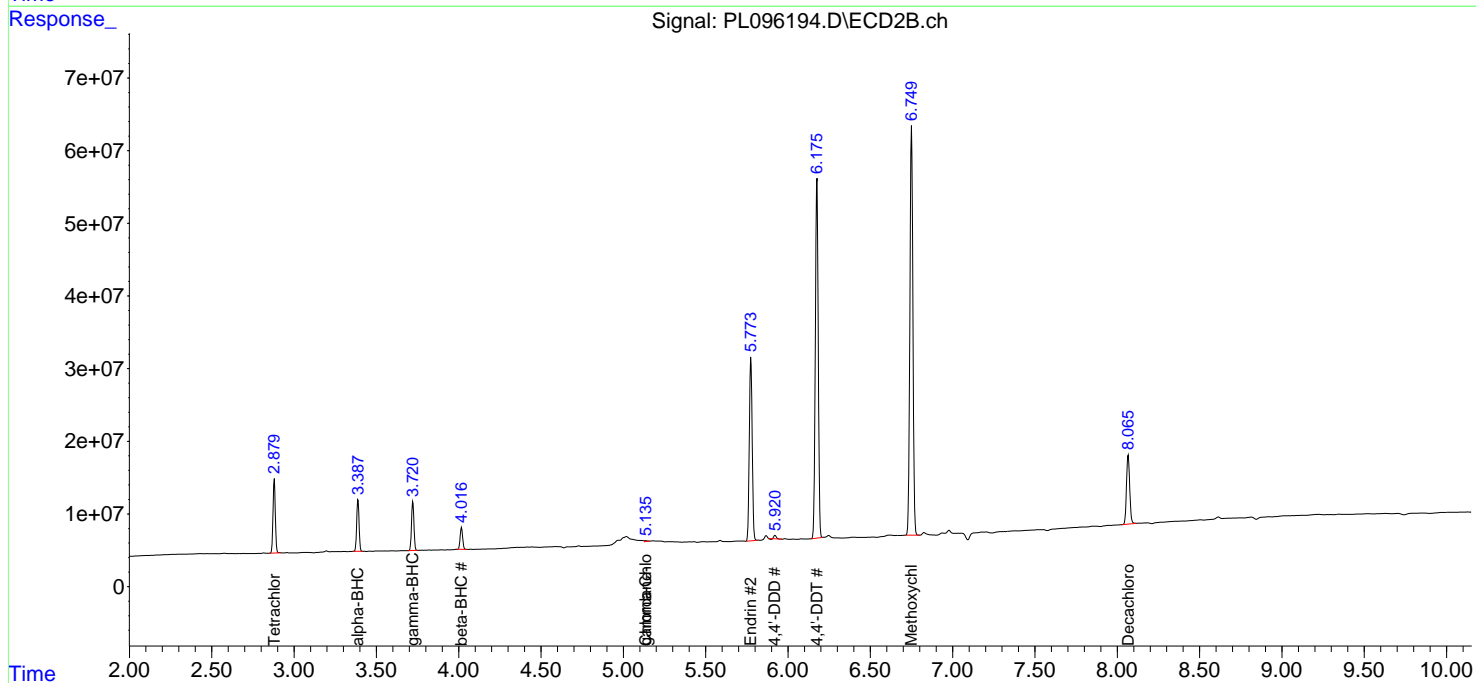
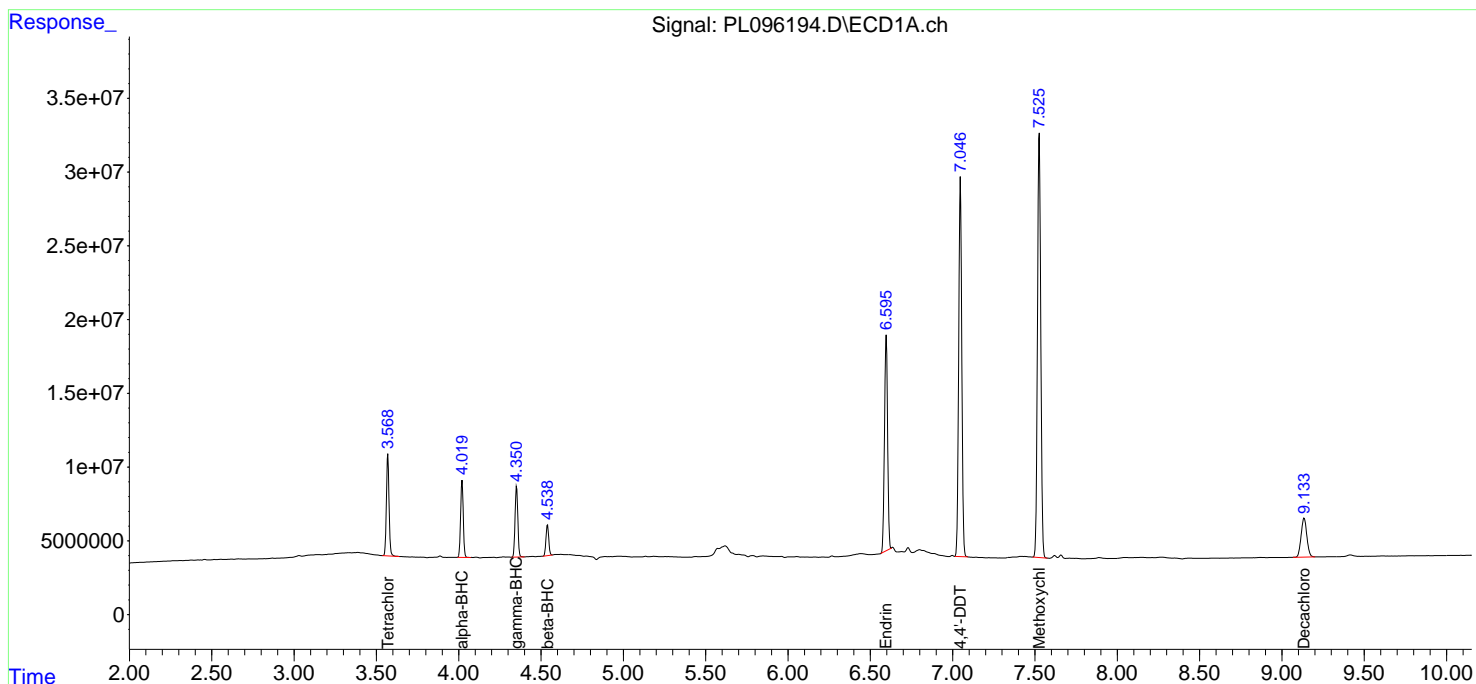
(f)=RT Delta > 1/2 Window (#)=Amounts differ by > 25% (m)=manual int.

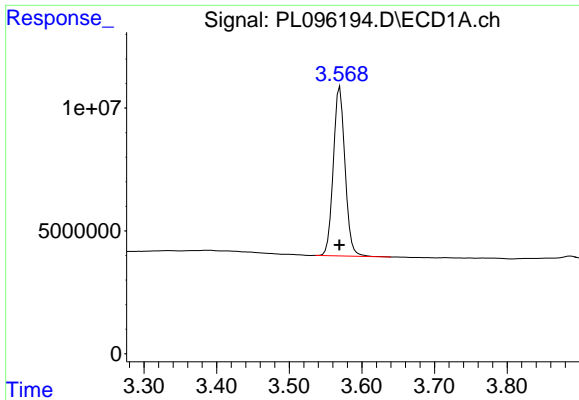
Data Path : Z:\pestpcbsrv\HPCHEM1\ECD_L\Data\PL062725\
 Data File : PL096194.D
 Signal(s) : Signal #1: ECD1A.ch Signal #2: ECD2B.ch
 Acq On : 27 Jun 2025 12:44
 Operator : AR\AJ
 Sample : PEM
 Misc :
 ALS Vial : 3 Sample Multiplier: 1

Instrument :
 ECD_L
 ClientSampleId :

Integration File signal 1: autoint1.e
 Integration File signal 2: autoint2.e
 Quant Time: Jun 27 23:15:02 2025
 Quant Method : Z:\pestpcbsrv\HPCHEM1\ECD_L\methods\PL062625.M
 Quant Title : GC Extractables
 QLast Update : Thu Jun 26 18:02:32 2025
 Response via : Initial Calibration
 Integrator: ChemStation

Volume Inj. : 1 µl
 Signal #1 Phase : ZB-MR1 Signal #2 Phase: ZB-MR2
 Signal #1 Info : 30M x 0.32mm x0.5 Signal #2 Info : 30M x 0.32mm x0.25µm

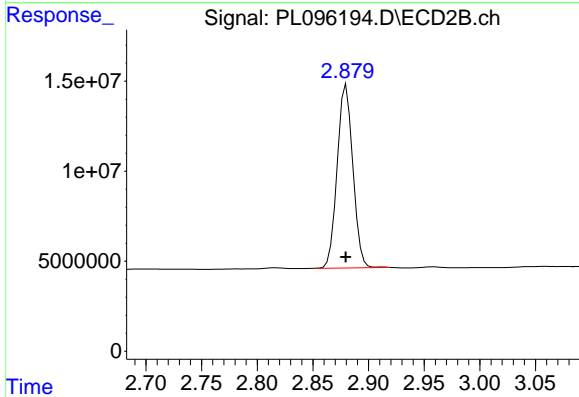




#1 Tetrachloro-m-xylene

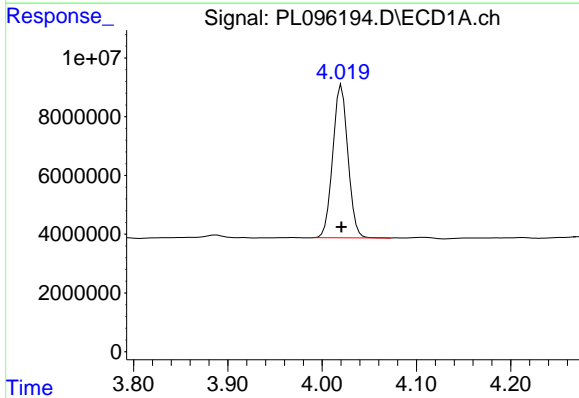
R.T.: 3.570 min
 Delta R.T.: 0.000 min
 Response: 77153061
 Conc: 23.14 ng/ml

Instrument :
 ECD_L
 ClientSampleId :



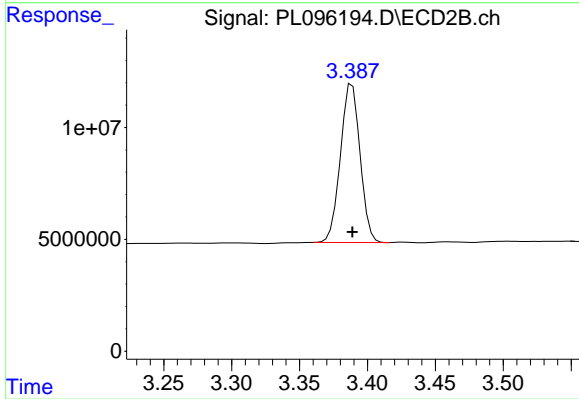
#1 Tetrachloro-m-xylene

R.T.: 2.880 min
 Delta R.T.: 0.000 min
 Response: 99806728
 Conc: 17.35 ng/ml



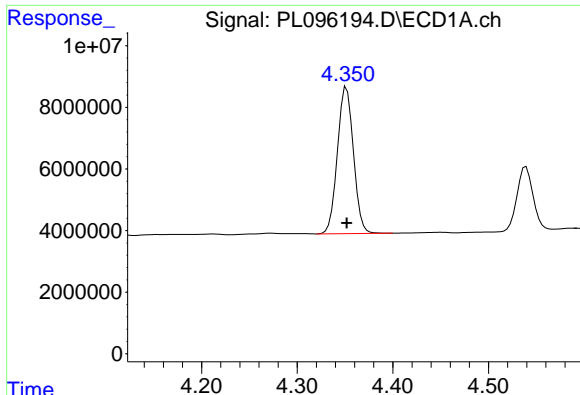
#2 alpha-BHC

R.T.: 4.020 min
 Delta R.T.: 0.000 min
 Response: 57955698
 Conc: 11.70 ng/ml



#2 alpha-BHC

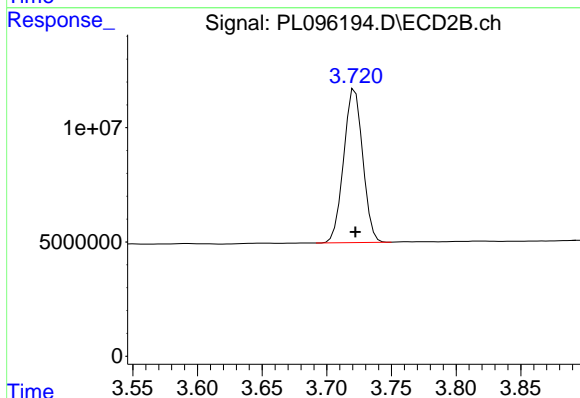
R.T.: 3.389 min
 Delta R.T.: 0.000 min
 Response: 71254066
 Conc: 10.91 ng/ml



#3 gamma-BHC (Lindane)

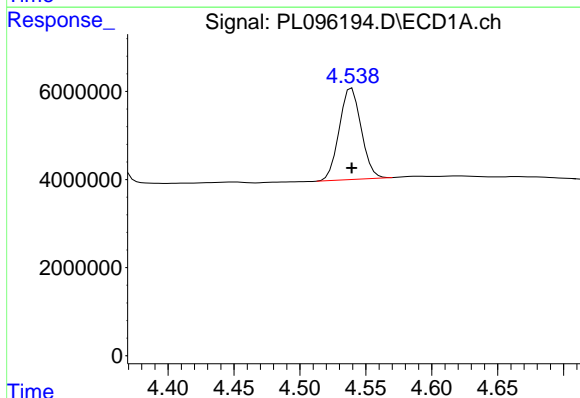
R.T.: 4.352 min
 Delta R.T.: 0.000 min
 Response: 55574508
 Conc: 11.99 ng/ml

Instrument :
 ECD_L
 ClientSampleId :



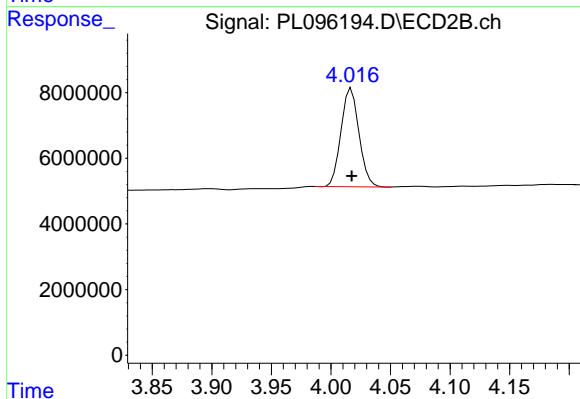
#3 gamma-BHC (Lindane)

R.T.: 3.722 min
 Delta R.T.: 0.000 min
 Response: 68753975
 Conc: 11.09 ng/ml



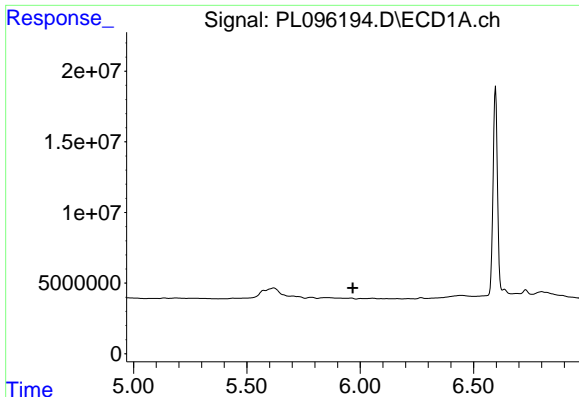
#6 beta-BHC

R.T.: 4.539 min
 Delta R.T.: 0.000 min
 Response: 24050180
 Conc: 12.14 ng/ml



#6 beta-BHC

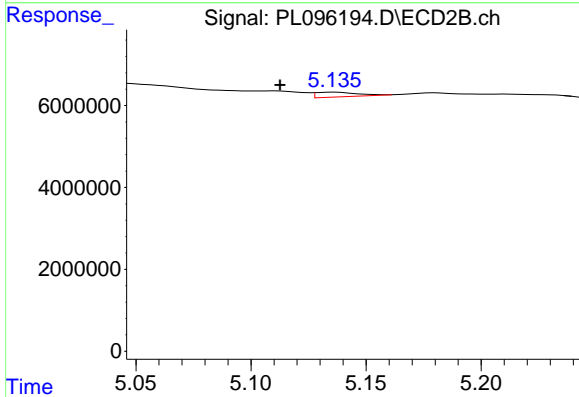
R.T.: 4.017 min
 Delta R.T.: 0.000 min
 Response: 31506093
 Conc: 11.55 ng/ml



#10 gamma-Chlordane

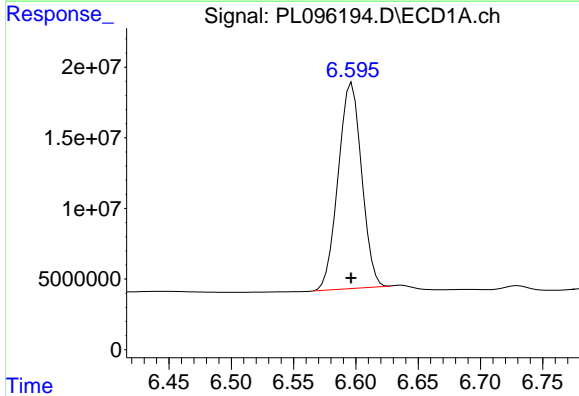
R.T.: 0.000 min
 Exp R.T.: 5.967 min
 Response: 0
 Conc: N.D.

Instrument :
 ECD_L
 ClientSampleId :



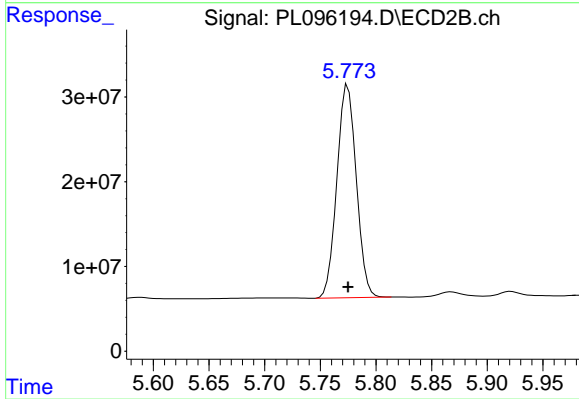
#10 gamma-Chlordane

R.T.: 5.136 min
 Delta R.T.: 0.024 min
 Response: 1456054
 Conc: 0.24 ng/ml



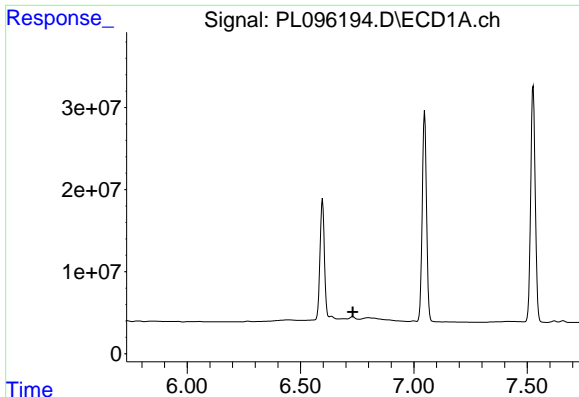
#14 Endrin

R.T.: 6.597 min
 Delta R.T.: 0.000 min
 Response: 191202275
 Conc: 60.17 ng/ml



#14 Endrin

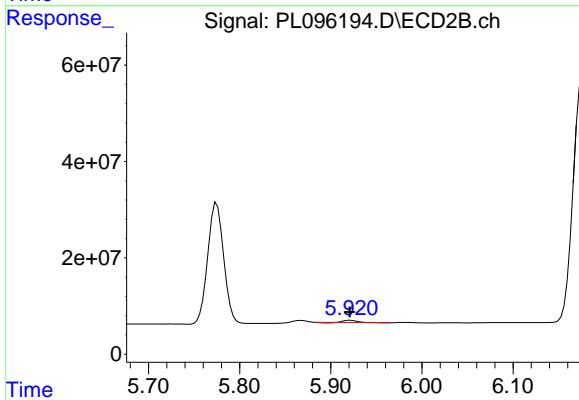
R.T.: 5.775 min
 Delta R.T.: 0.000 min
 Response: 305867401
 Conc: 57.36 ng/ml



#16 4,4'-DDD

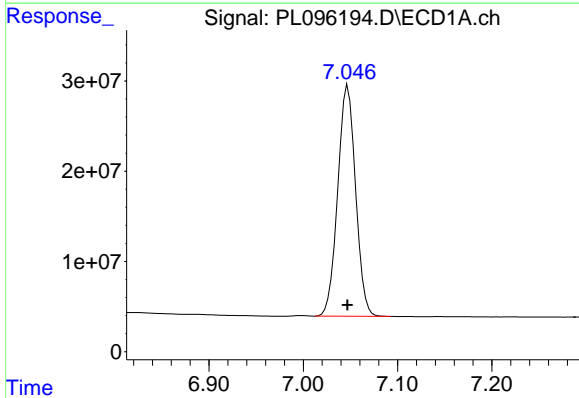
R.T.: 0.000 min
 Exp R.T.: 6.730 min
 Response: 0
 Conc: N.D.

Instrument :
 ECD_L
 ClientSampleId :



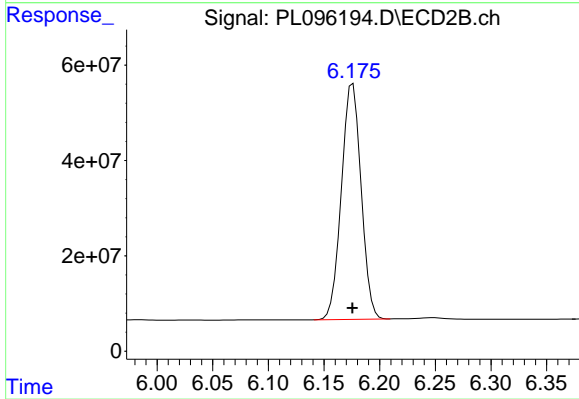
#16 4,4'-DDD

R.T.: 5.921 min
 Delta R.T.: 0.000 min
 Response: 4435924
 Conc: 0.91 ng/ml



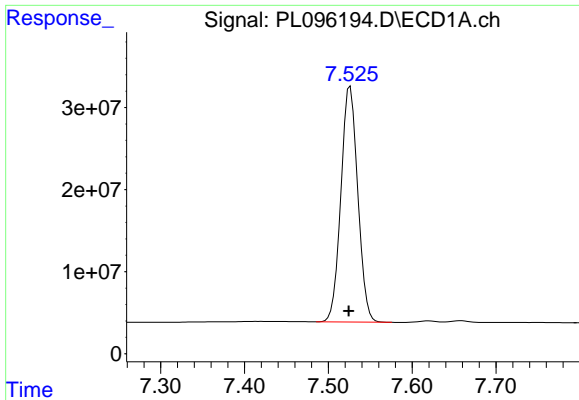
#17 4,4'-DDT

R.T.: 7.047 min
 Delta R.T.: 0.000 min
 Response: 336430177
 Conc: 115.11 ng/ml



#17 4,4'-DDT

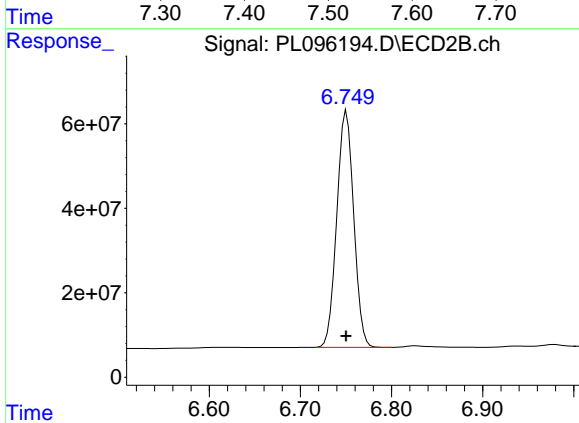
R.T.: 6.176 min
 Delta R.T.: 0.000 min
 Response: 609295823
 Conc: 118.71 ng/ml



#20 Methoxychlor

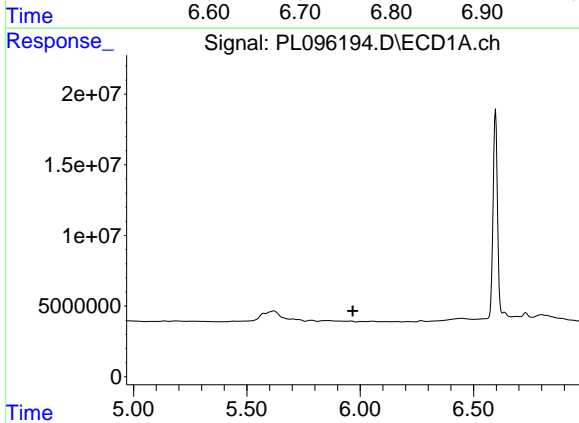
R.T.: 7.526 min
 Delta R.T.: 0.002 min
 Response: 401867011
 Conc: 266.24 ng/ml

Instrument :
 ECD_L
 ClientSampleId :



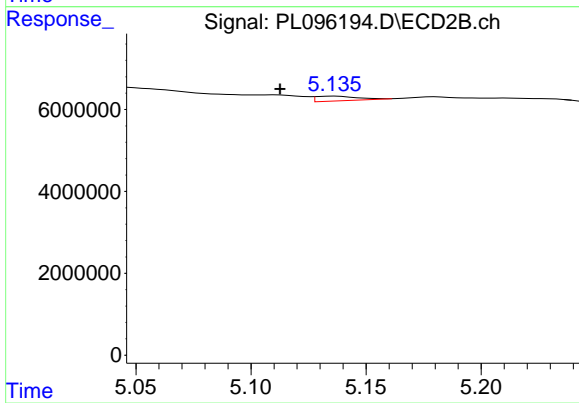
#20 Methoxychlor

R.T.: 6.751 min
 Delta R.T.: 0.000 min
 Response: 723196740
 Conc: 253.40 ng/ml



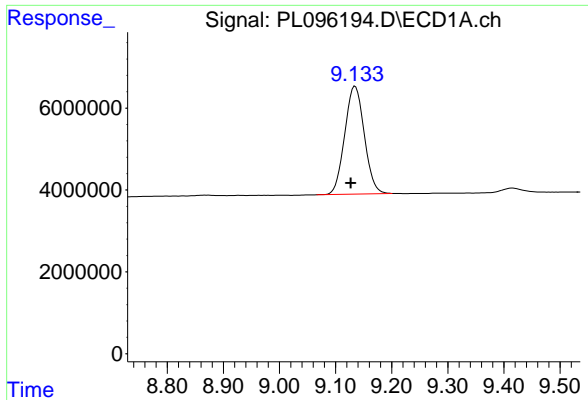
#25 Chlordane-3

R.T.: 0.000 min
 Exp R.T. : 5.967 min
 Response: 0
 Conc: N.D.



#25 Chlordane-3

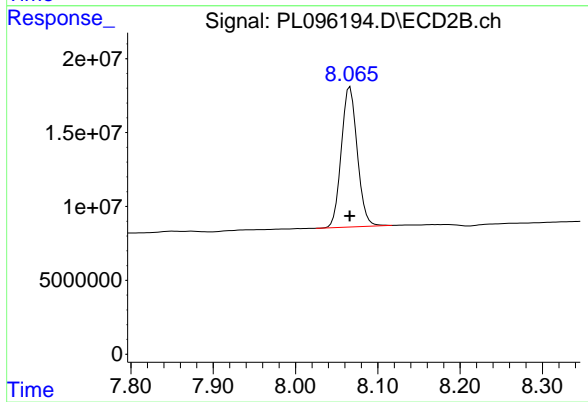
R.T.: 5.136 min
 Delta R.T.: 0.024 min
 Response: 1456054
 Conc: 2.12 ng/ml



#28 Decachlorobiphenyl

R.T.: 9.135 min
Delta R.T.: 0.008 min
Response: 63845326
Conc: 24.90 ng/ml

Instrument :
ECD_L
ClientSampleId :



#28 Decachlorobiphenyl

R.T.: 8.066 min
Delta R.T.: 0.000 min
Response: 127654489
Conc: 21.34 ng/ml