

Data Path : Z:\pestpcbsrv\HPCHEM1\ECD\_L\Data\PL062822\  
 Data File : PL076080.D  
 Signal(s) : Signal #1: ECD1A.ch Signal #2: ECD2B.ch  
 Acq On : 28 Jun 2022 13:18  
 Operator : AR\AJ  
 Sample : PB145883BL  
 Misc :  
 ALS Vial : 6 Sample Multiplier: 1

Instrument :  
 ECD\_L  
 ClientSampleId :

Integration File signal 1: autoint1.e  
 Integration File signal 2: autoint2.e  
 Quant Time: Jun 28 22:28:14 2022  
 Quant Method : Z:\pestpcbsrv\HPCHEM1\ECD\_L\methods\PL062222.M  
 Quant Title : GC Extractables  
 QLast Update : Fri Jun 24 02:17:51 2022  
 Response via : Initial Calibration  
 Integrator: ChemStation

Volume Inj. : 1 µl  
 Signal #1 Phase : ZB-MR2 Signal #2 Phase: ZB-MR1  
 Signal #1 Info : 30M x 0.32mm x0.2 Signal #2 Info : 30M x 0.32mm x0.5µm

Compound	RT#1	RT#2	Resp#1	Resp#2	ng/ml	ng/ml
-----						
System Monitoring Compounds						
1) SA Tetrachlo...	5.644	4.633	13797894	32957345	18.243	17.377
2) SA Decachlor...	11.637	10.374	13199491	27735832	20.976	18.059
Target Compounds						
5) MB Aldrin	0.000	6.460f	0	208570	N.D.	0.101 #
7) B delta-BHC	0.000	6.398	0	607974	N.D.	0.269 #
8) B Heptachlo...	0.000	7.044f	0	158337	N.D.	0.083 #
9) A Endosulfan I	0.000	7.486f	0	155967	N.D.	0.089 #
10) B gamma-Chl...	8.418f	0.000	185431	0	0.239	N.D. #
11) B alpha-Chl...	0.000	7.379f	0	1800920	N.D.	0.941 #
14) MA Endrin	0.000	8.032	0	766291	N.D.	0.504 #
15) B Endosulfa...	9.304	0.000	794257	0	1.252	N.D. #
17) MA 4,4'-DDT	9.494f	0.000	192651	0	0.316	N.D. #
18) B Endrin a...	0.000	8.561f	0	650081	N.D.	0.545 #
21) B Endrin ke...	10.184f	9.286	579747	565227	0.804	0.342 #
24) Chlordane-2	7.618	6.615f	592454	4433084	19.530	63.753 #
25) Chlordane-3	8.418f	0.000	185431	0	1.823	N.D. #
26) Chlordane-4	0.000	7.379f	0	1800920	N.D.	9.553 #
27) Chlordane-5	9.379	8.134f	81111	69778	3.801	1.525 #
-----						

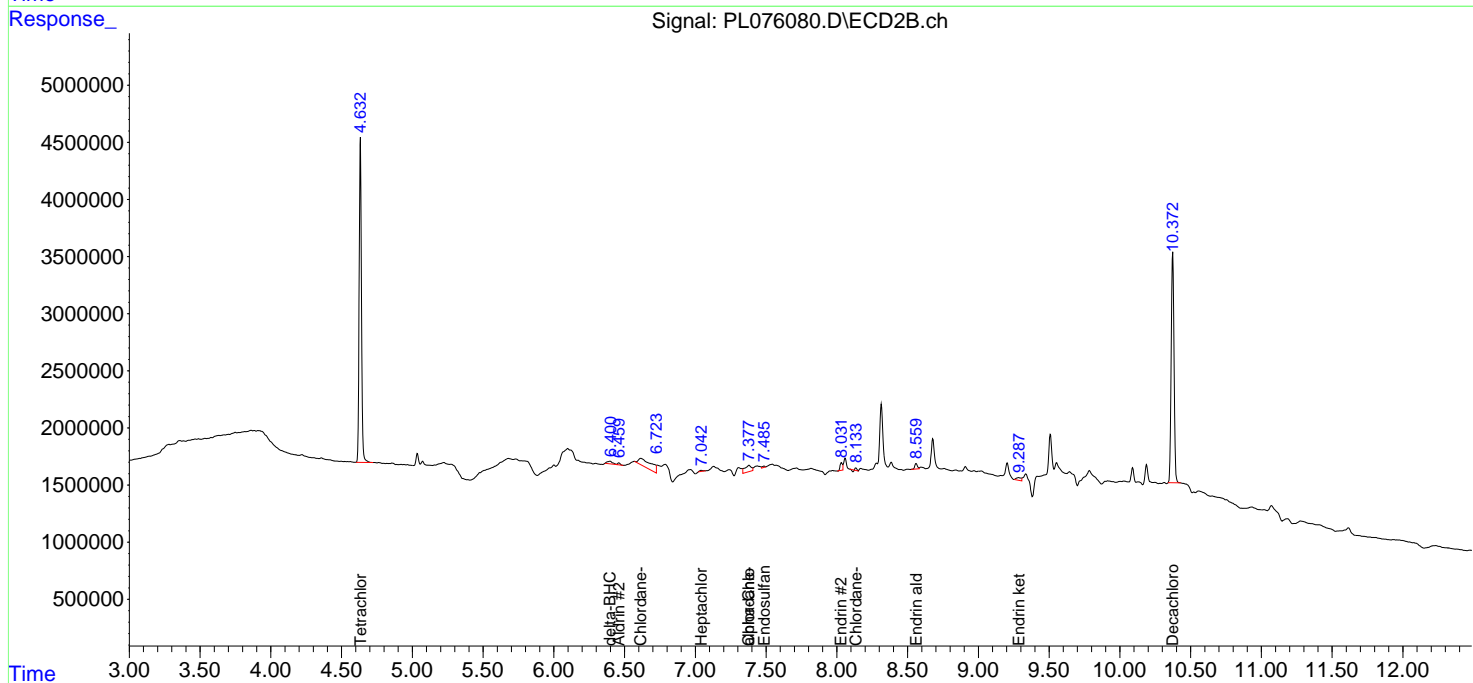
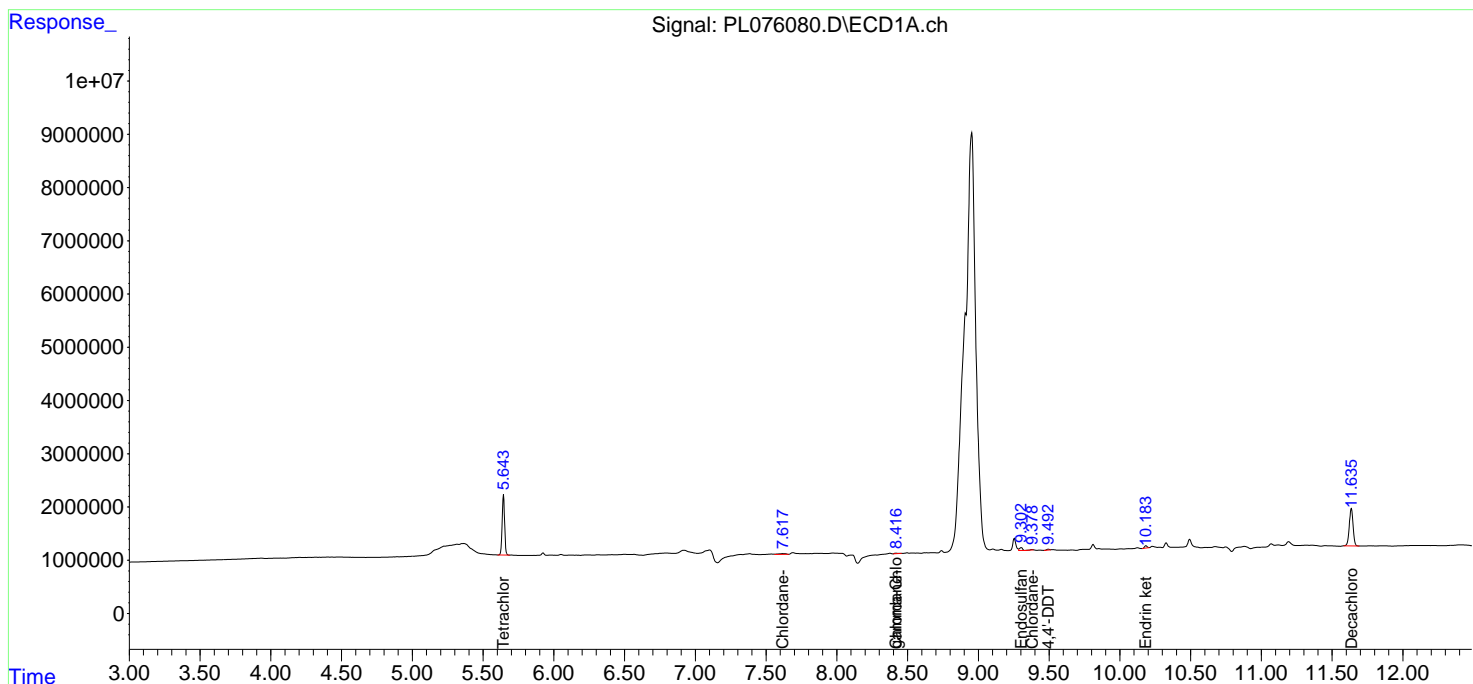
(f)=RT Delta > 1/2 Window (#)=Amounts differ by > 25% (m)=manual int.

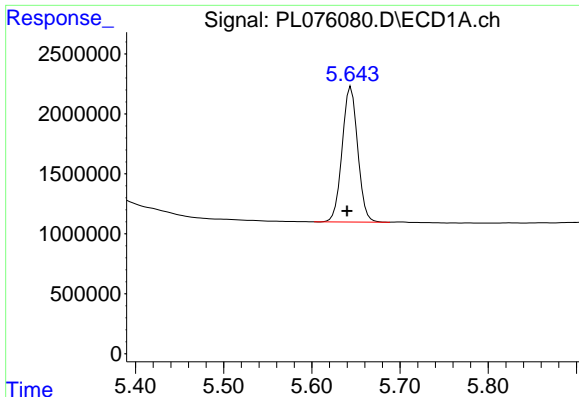
Data Path : Z:\pestpcbsrv\HPCHEM1\ECD\_L\Data\PL062822\  
 Data File : PL076080.D  
 Signal(s) : Signal #1: ECD1A.ch Signal #2: ECD2B.ch  
 Acq On : 28 Jun 2022 13:18  
 Operator : AR\AJ  
 Sample : PB145883BL  
 Misc :  
 ALS Vial : 6 Sample Multiplier: 1

Instrument :  
 ECD\_L  
 ClientSampleId :

Integration File signal 1: autoint1.e  
 Integration File signal 2: autoint2.e  
 Quant Time: Jun 28 22:28:14 2022  
 Quant Method : Z:\pestpcbsrv\HPCHEM1\ECD\_L\methods\PL062222.M  
 Quant Title : GC Extractables  
 QLast Update : Fri Jun 24 02:17:51 2022  
 Response via : Initial Calibration  
 Integrator: ChemStation

Volume Inj. : 1 µl  
 Signal #1 Phase : ZB-MR2 Signal #2 Phase: ZB-MR1  
 Signal #1 Info : 30M x 0.32mm x0.2 Signal #2 Info : 30M x 0.32mm x0.5µm

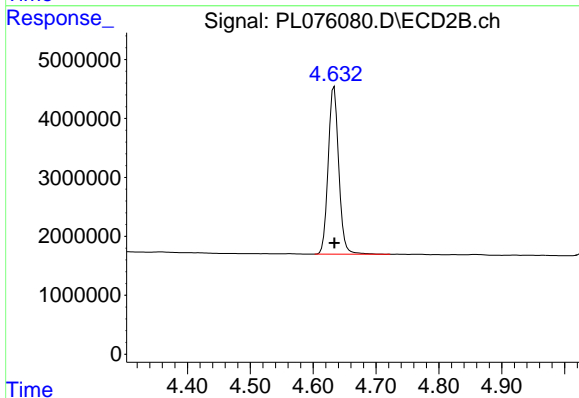




#1 Tetrachloro-m-xylene

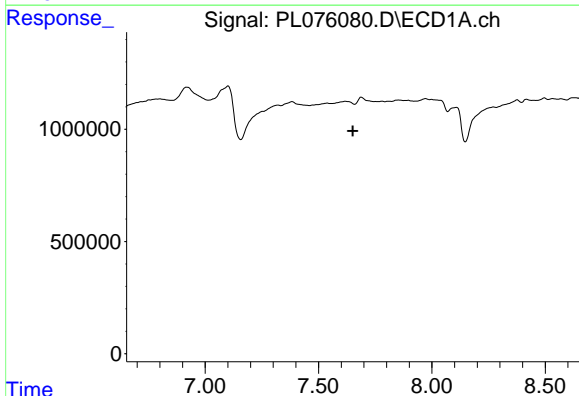
R.T.: 5.644 min  
 Delta R.T.: 0.004 min  
 Response: 13797894  
 Conc: 18.24 ng/ml

Instrument :  
 ECD\_L  
 ClientSampleId :



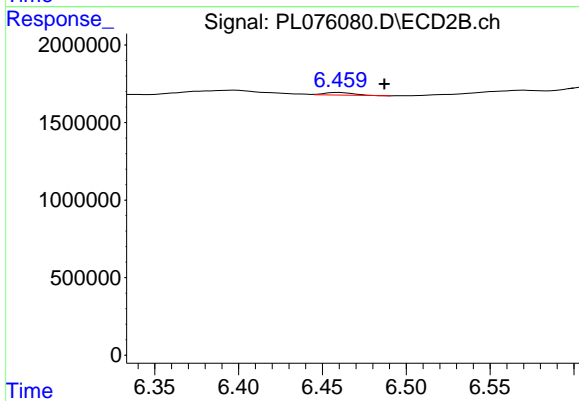
#1 Tetrachloro-m-xylene

R.T.: 4.633 min  
 Delta R.T.: 0.000 min  
 Response: 32957345  
 Conc: 17.38 ng/ml



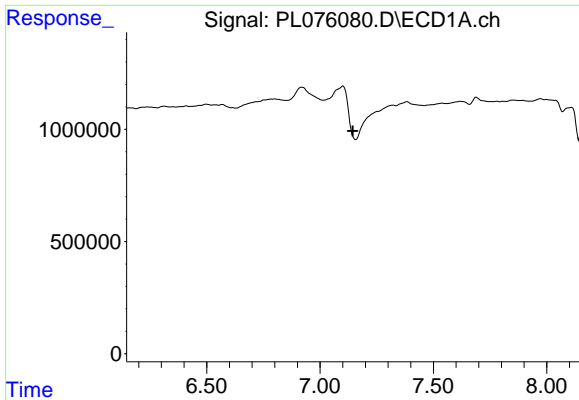
#5 Aldrin

R.T.: 0.000 min  
 Exp R.T. : 7.651 min  
 Response: 0  
 Conc: N.D.



#5 Aldrin

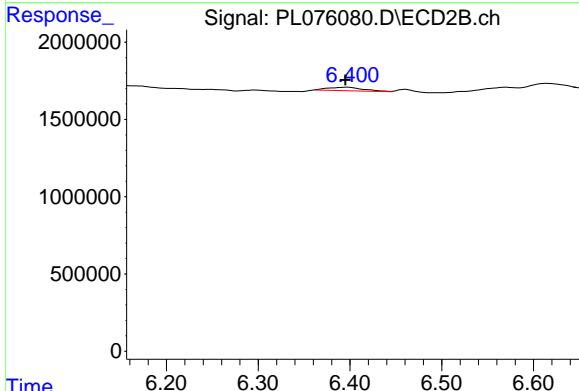
R.T.: 6.460 min  
 Delta R.T.: -0.027 min  
 Response: 208570  
 Conc: 0.10 ng/ml



#7 delta-BHC

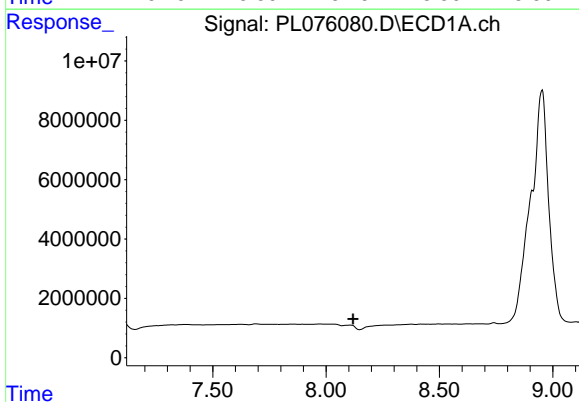
R.T.: 0.000 min  
 Exp R.T.: 7.145 min  
 Response: 0  
 Conc: N.D.

Instrument :  
 ECD\_L  
 ClientSampleId :



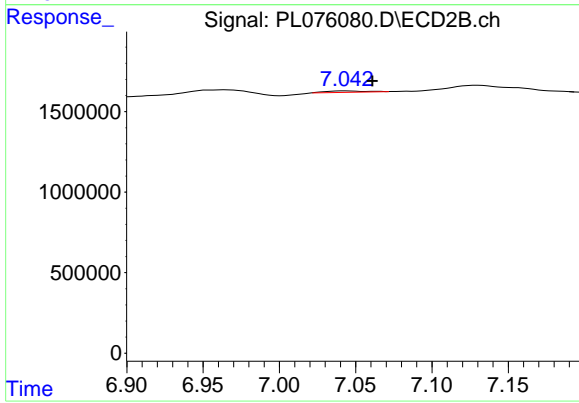
#7 delta-BHC

R.T.: 6.398 min  
 Delta R.T.: 0.003 min  
 Response: 607974  
 Conc: 0.27 ng/ml



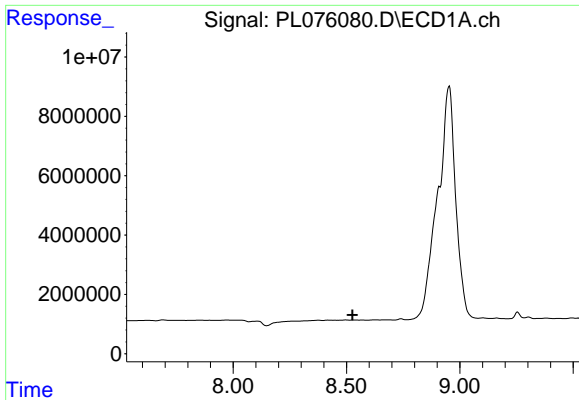
#8 Heptachlor epoxide

R.T.: 0.000 min  
 Exp R.T.: 8.119 min  
 Response: 0  
 Conc: N.D.



#8 Heptachlor epoxide

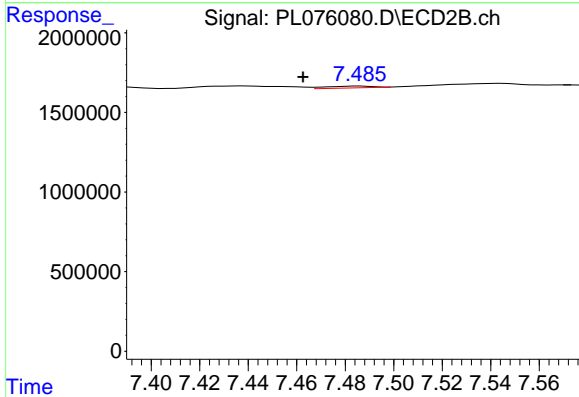
R.T.: 7.044 min  
 Delta R.T.: -0.017 min  
 Response: 158337  
 Conc: 0.08 ng/ml



#9 Endosulfan I

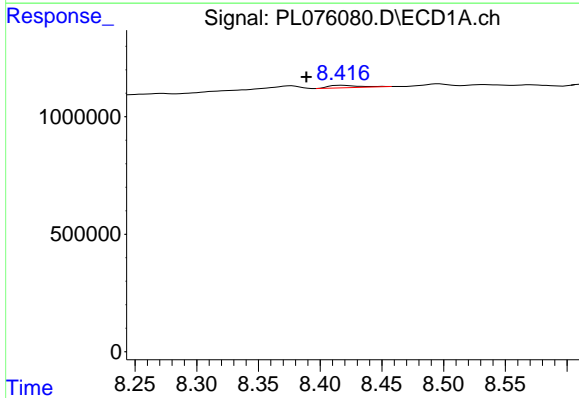
R.T.: 0.000 min  
 Exp R.T.: 8.527 min  
 Response: 0  
 Conc: N.D.

Instrument :  
 ECD\_L  
 ClientSampleId :



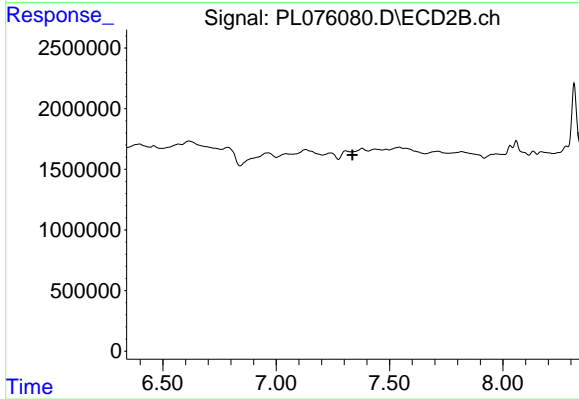
#9 Endosulfan I

R.T.: 7.486 min  
 Delta R.T.: 0.024 min  
 Response: 155967  
 Conc: 0.09 ng/ml



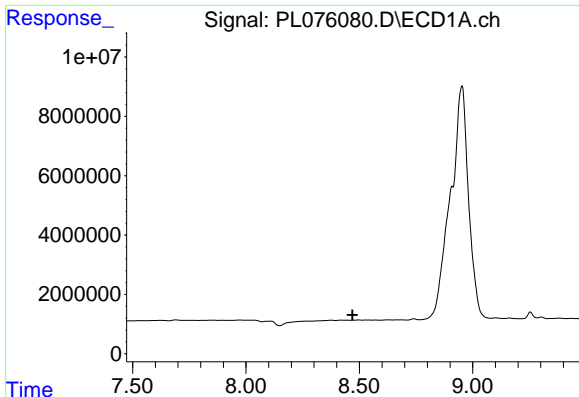
#10 gamma-Chlordane

R.T.: 8.418 min  
 Delta R.T.: 0.029 min  
 Response: 185431  
 Conc: 0.24 ng/ml



#10 gamma-Chlordane

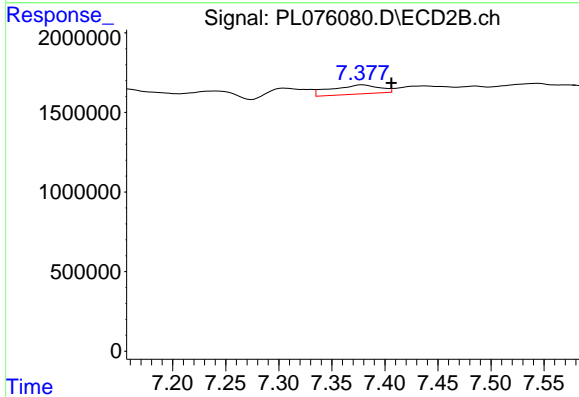
R.T.: 0.000 min  
 Exp R.T.: 7.337 min  
 Response: 0  
 Conc: N.D.



#11 alpha-Chlordane

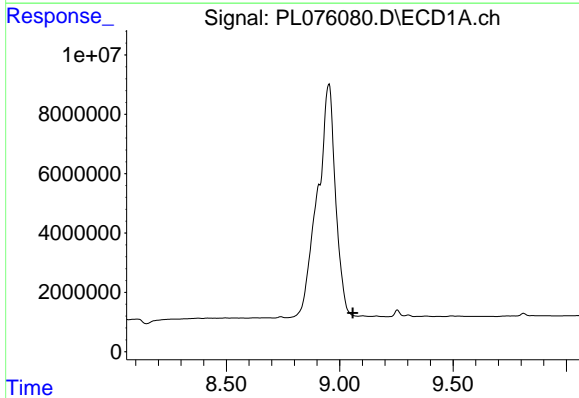
R.T.: 0.000 min  
 Exp R.T. : 8.470 min  
 Response: 0  
 Conc: N.D.

Instrument :  
 ECD\_L  
 ClientSampleId :



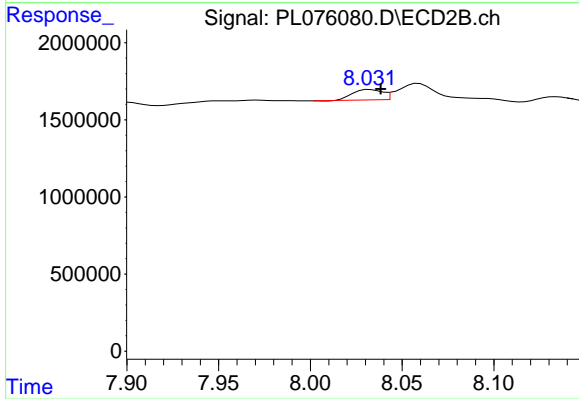
#11 alpha-Chlordane

R.T.: 7.379 min  
 Delta R.T.: -0.027 min  
 Response: 1800920  
 Conc: 0.94 ng/ml



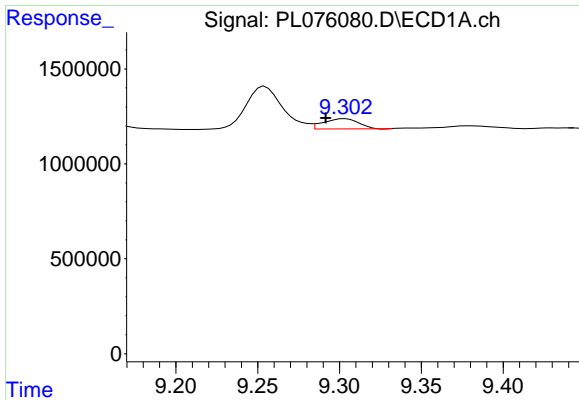
#14 Endrin

R.T.: 0.000 min  
 Exp R.T. : 9.058 min  
 Response: 0  
 Conc: N.D.



#14 Endrin

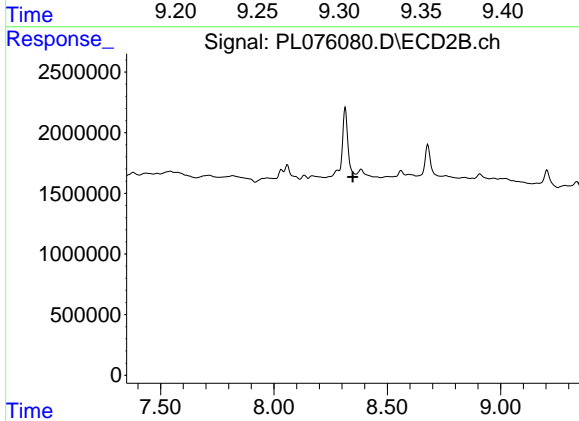
R.T.: 8.032 min  
 Delta R.T.: -0.006 min  
 Response: 766291  
 Conc: 0.50 ng/ml



#15 Endosulfan II

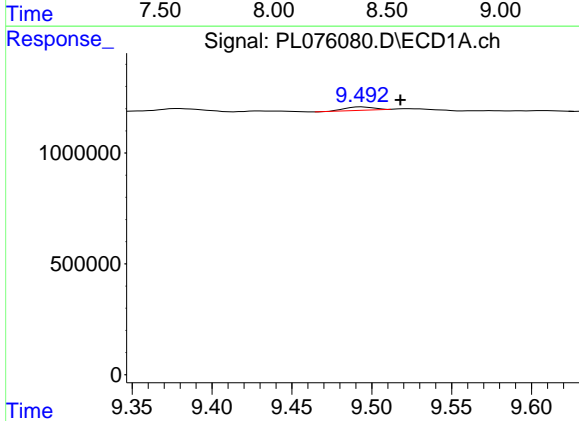
R.T.: 9.304 min  
 Delta R.T.: 0.012 min  
 Response: 794257  
 Conc: 1.25 ng/ml

Instrument :  
 ECD\_L  
 ClientSampleId :



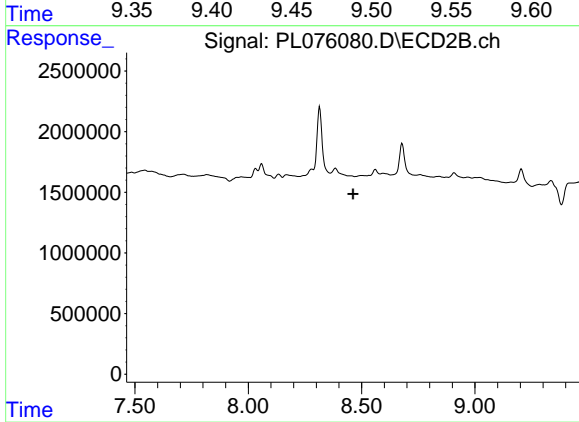
#15 Endosulfan II

R.T.: 0.000 min  
 Exp R.T. : 8.349 min  
 Response: 0  
 Conc: N.D.



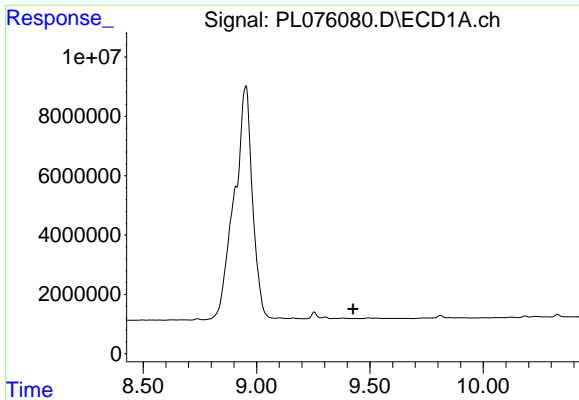
#17 4,4'-DDT

R.T.: 9.494 min  
 Delta R.T.: -0.024 min  
 Response: 192651  
 Conc: 0.32 ng/ml



#17 4,4'-DDT

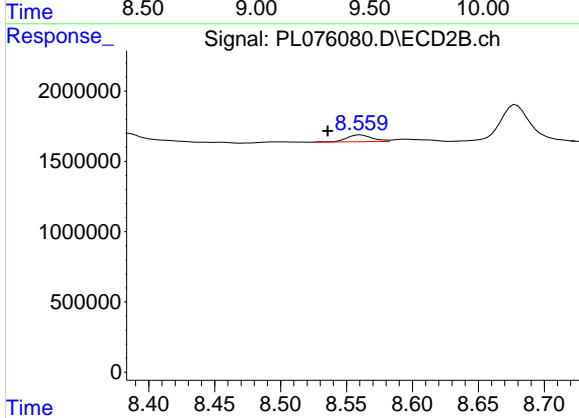
R.T.: 0.000 min  
 Exp R.T. : 8.462 min  
 Response: 0  
 Conc: N.D.



#18 Endrin aldehyde

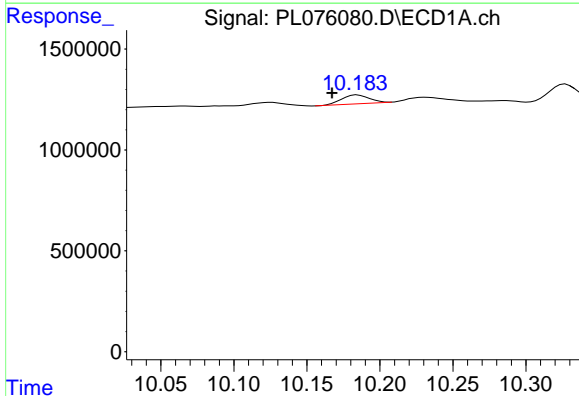
R.T.: 0.000 min  
 Exp R.T.: 9.426 min  
 Response: 0  
 Conc: N.D.

Instrument :  
 ECD\_L  
 ClientSampleId :



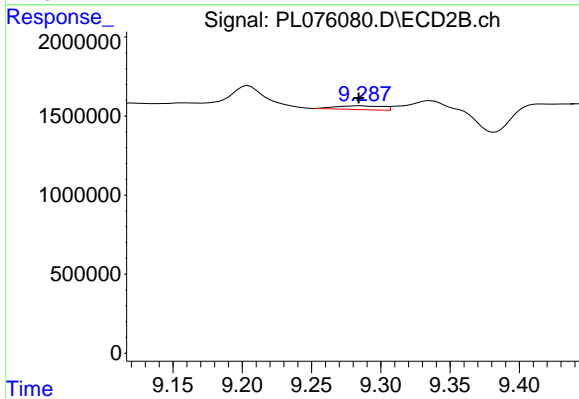
#18 Endrin aldehyde

R.T.: 8.561 min  
 Delta R.T.: 0.025 min  
 Response: 650081  
 Conc: 0.54 ng/ml



#21 Endrin ketone

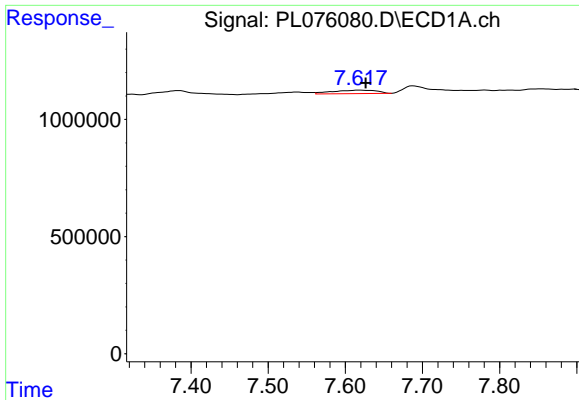
R.T.: 10.184 min  
 Delta R.T.: 0.017 min  
 Response: 579747  
 Conc: 0.80 ng/ml



#21 Endrin ketone

R.T.: 9.286 min  
 Delta R.T.: 0.002 min  
 Response: 565227  
 Conc: 0.34 ng/ml

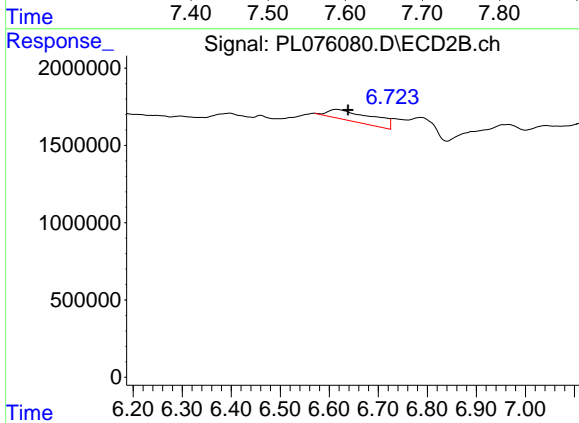




#24 Chlordane-2

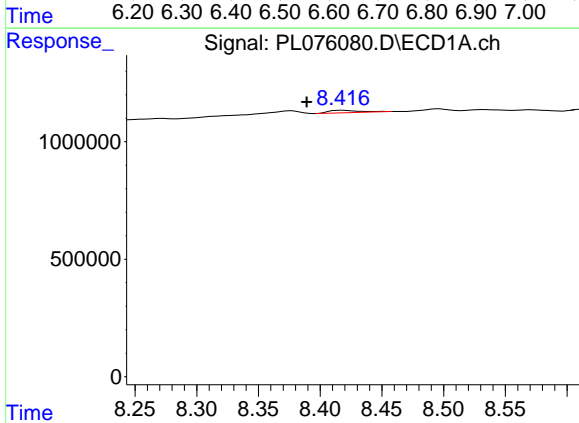
R.T.: 7.618 min  
 Delta R.T.: -0.008 min  
 Response: 592454  
 Conc: 19.53 ng/ml

Instrument :  
 ECD\_L  
 ClientSampleId :



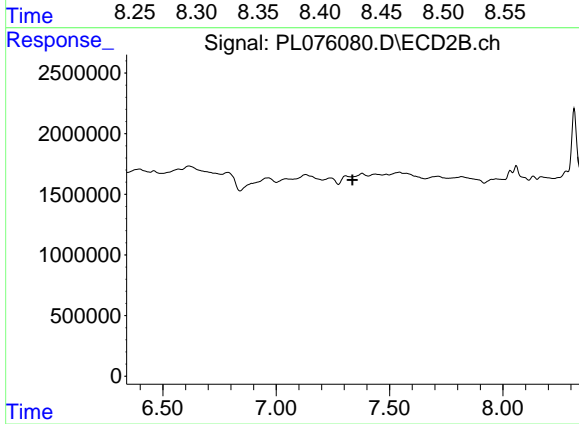
#24 Chlordane-2

R.T.: 6.615 min  
 Delta R.T.: -0.024 min  
 Response: 4433084  
 Conc: 63.75 ng/ml



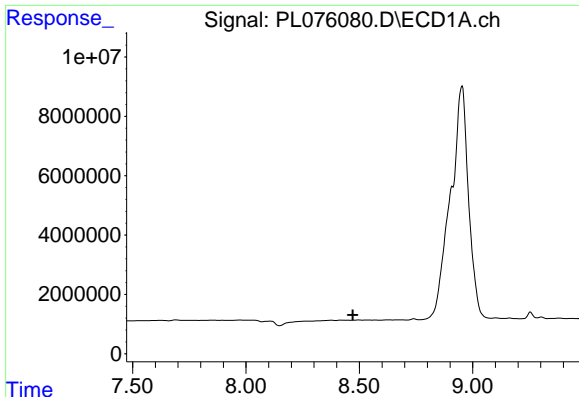
#25 Chlordane-3

R.T.: 8.418 min  
 Delta R.T.: 0.029 min  
 Response: 185431  
 Conc: 1.82 ng/ml



#25 Chlordane-3

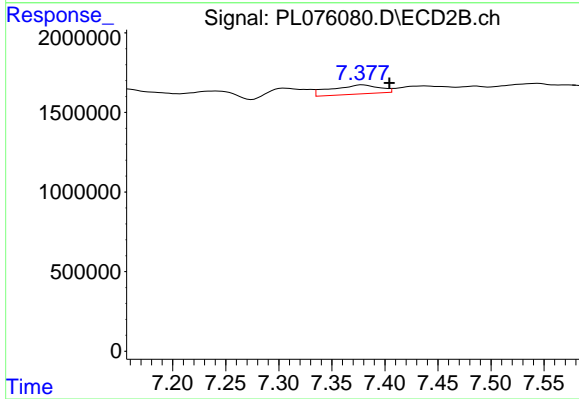
R.T.: 0.000 min  
 Exp R.T. : 7.337 min  
 Response: 0  
 Conc: N.D.



#26 Chlordane-4

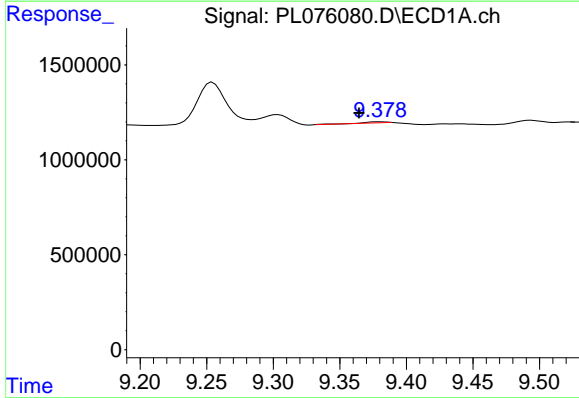
R.T.: 0.000 min  
 Exp R.T.: 8.472 min  
 Response: 0  
 Conc: N.D.

Instrument :  
 ECD\_L  
 ClientSampleId :



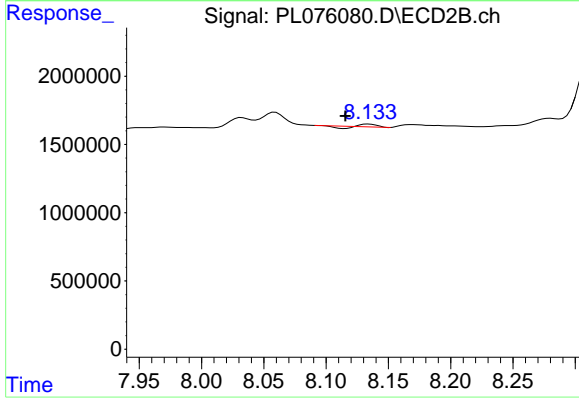
#26 Chlordane-4

R.T.: 7.379 min  
 Delta R.T.: -0.025 min  
 Response: 1800920  
 Conc: 9.55 ng/ml



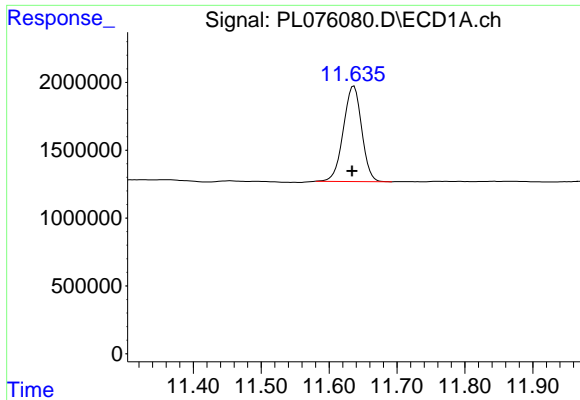
#27 Chlordane-5

R.T.: 9.379 min  
 Delta R.T.: 0.015 min  
 Response: 81111  
 Conc: 3.80 ng/ml



#27 Chlordane-5

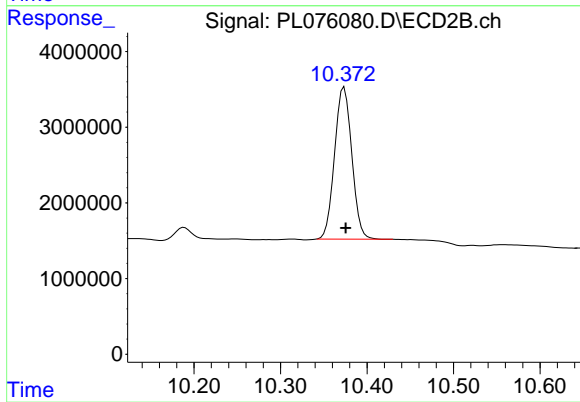
R.T.: 8.134 min  
 Delta R.T.: 0.018 min  
 Response: 69778  
 Conc: 1.53 ng/ml



#28 Decachlorobiphenyl

R.T.: 11.637 min  
Delta R.T.: 0.003 min  
Response: 13199491  
Conc: 20.98 ng/ml

Instrument :  
ECD\_L  
ClientSampleId :



#28 Decachlorobiphenyl

R.T.: 10.374 min  
Delta R.T.: -0.002 min  
Response: 27735832  
Conc: 18.06 ng/ml