

Data Path : Z:\pestpcbsrv\HPCHEM1\ECD\_L\Data\PL062921\  
 Data File : PL067868.D  
 Signal(s) : Signal #1: ECD1A.ch Signal #2: ECD2B.ch  
 Acq On : 29 Jun 2021 09:48  
 Operator : AR\AJ  
 Sample : M2846-01  
 Misc :  
 ALS Vial : 5 Sample Multiplier: 1

Instrument :  
 ECD\_L  
 ClientSampleId :  
 1-4-FEET-TP

Integration File signal 1: autoint1.e  
 Integration File signal 2: autoint2.e  
 Quant Time: Jun 30 02:56:03 2021  
 Quant Method : Z:\pestpcbsrv\HPCHEM1\ECD\_L\methods\PL061021.M  
 Quant Title : GC Extractables  
 QLast Update : Fri Jun 11 02:00:12 2021  
 Response via : Initial Calibration  
 Integrator: ChemStation

Volume Inj. : 1 µl  
 Signal #1 Phase : ZB-MR2 Signal #2 Phase: ZB-MR1  
 Signal #1 Info : 30M x 0.32mm x0.2 Signal #2 Info : 30M x 0.32mm x0.5µm

Compound	RT#1	RT#2	Resp#1	Resp#2	ng/ml	ng/ml
-----						
System Monitoring Compounds						
1) SA Tetrachlo...	4.484	5.528	9486528	18137934	17.255	19.240
28) SA Decachlor...	10.222	11.427	13018324	17880273	18.370	17.951
Target Compounds						
2) A alpha-BHC	5.201f	6.141f	411019	156307	0.559	0.126 #
3) MA gamma-BHC...	5.590	0.000	220683	0	0.294	N.D. #
7) B delta-BHC	6.250	0.000	668793	0	0.906	N.D. #
8) B Heptachlo...	0.000	7.987	0	370687	N.D.	0.370 #
9) A Endosulfan I	7.324f	0.000	500302	0	0.744	N.D. #
10) B gamma-Chl...	7.174	8.236f	495931	749095	0.684	0.742
11) B alpha-Chl...	7.226f	0.000	399180	0	0.545	N.D. #
13) MA Dieldrin	7.603	0.000	186338	0	0.266	N.D. #
14) MA Endrin	7.864	0.000	226982	0	0.346	N.D. #
15) B Endosulfa...	8.187	9.179f	274661	1334090	0.446	1.673 #
16) A 4,4'-DDD	8.030f	0.000	814562	0	1.401	N.D. #
17) MA 4,4'-DDT	8.305	0.000	435720	0	0.749	N.D. #
19) B Endosulfa...	8.591f	0.000	295936	0	0.466	N.D. #
20) A Methoxychlor	8.914	0.000	165281	0	0.465	N.D. #
21) B Endrin ke...	0.000	10.002f	0	472896	N.D.	0.522 #
24) Chlordane-2	6.475	0.000	644859	0	24.081	N.D. #
25) Chlordane-3	7.174	8.236f	495931	749095	7.381	5.597
26) Chlordane-4	7.226f	0.000	399180	0	5.462	N.D. #
27) Chlordane-5	8.187	0.000	274661	0	12.554	N.D. #

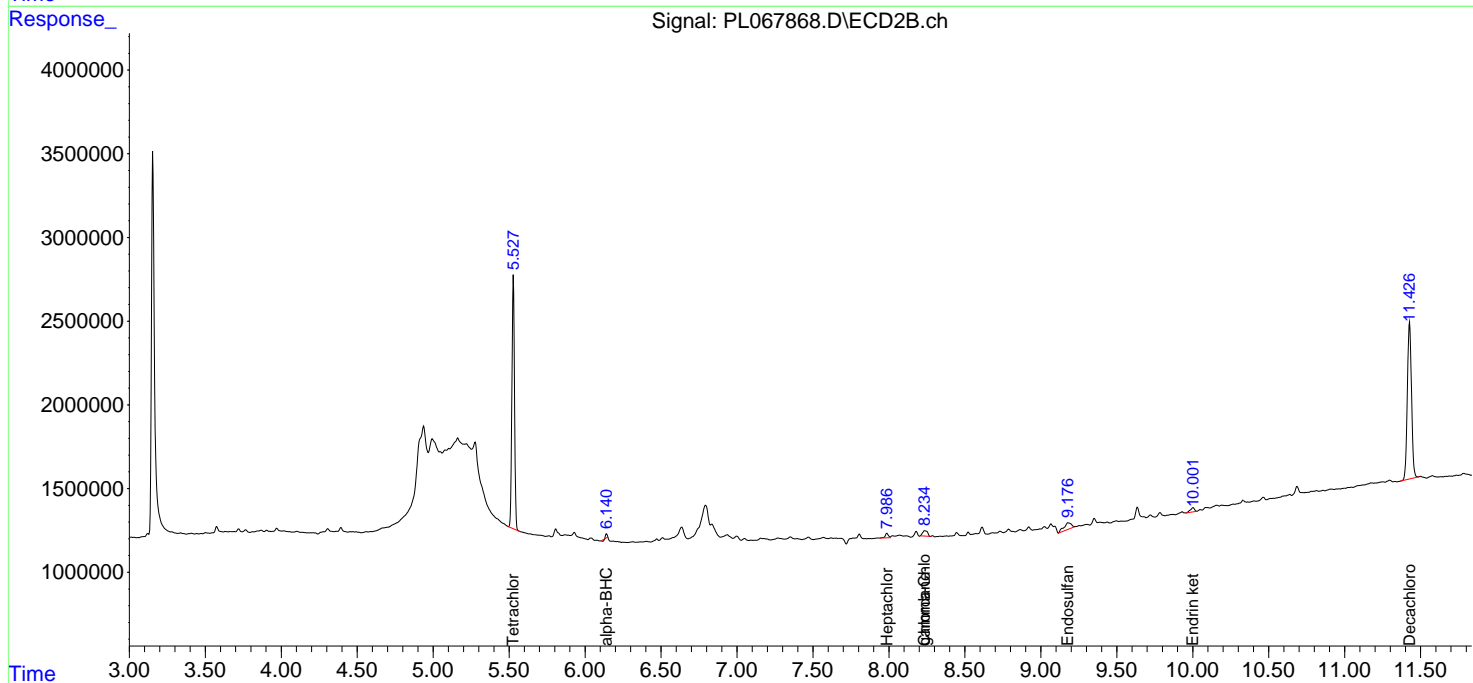
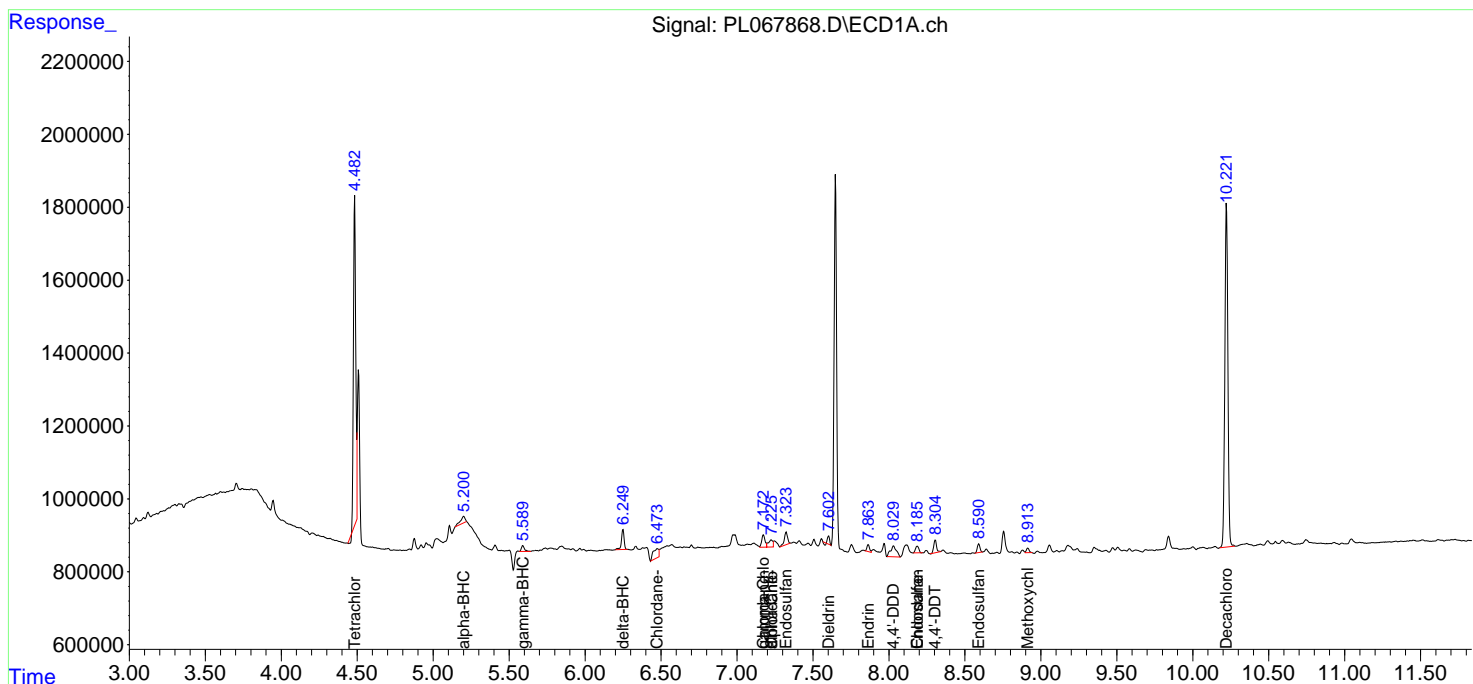
(f)=RT Delta > 1/2 Window (#)=Amounts differ by > 25% (m)=manual int.

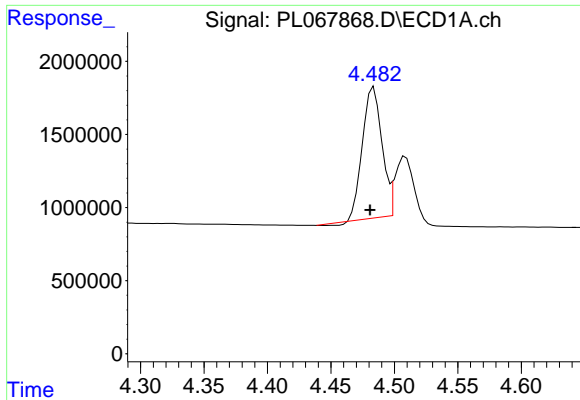
Data Path : Z:\pestpcbsrv\HPCHEM1\ECD\_L\Data\PL062921\  
 Data File : PL067868.D  
 Signal(s) : Signal #1: ECD1A.ch Signal #2: ECD2B.ch  
 Acq On : 29 Jun 2021 09:48  
 Operator : AR\AJ  
 Sample : M2846-01  
 Misc :  
 ALS Vial : 5 Sample Multiplier: 1

Instrument :  
 ECD\_L  
 ClientSampled :  
 1-4-FEET-TP

Integration File signal 1: autoint1.e  
 Integration File signal 2: autoint2.e  
 Quant Time: Jun 30 02:56:03 2021  
 Quant Method : Z:\pestpcbsrv\HPCHEM1\ECD\_L\methods\PL061021.M  
 Quant Title : GC Extractables  
 QLast Update : Fri Jun 11 02:00:12 2021  
 Response via : Initial Calibration  
 Integrator: ChemStation

Volume Inj. : 1 µl  
 Signal #1 Phase : ZB-MR2 Signal #2 Phase: ZB-MR1  
 Signal #1 Info : 30M x 0.32mm x0.2 Signal #2 Info : 30M x 0.32mm x0.5µm

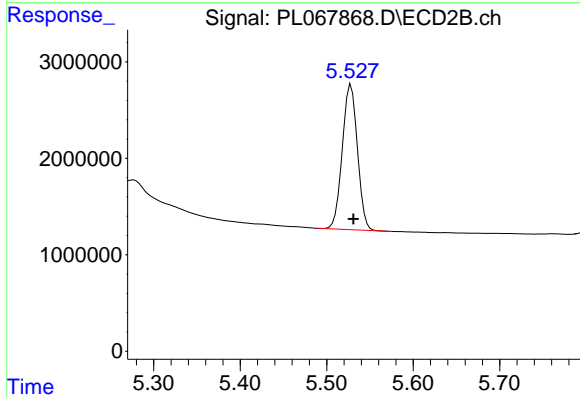




#1 Tetrachloro-m-xylene

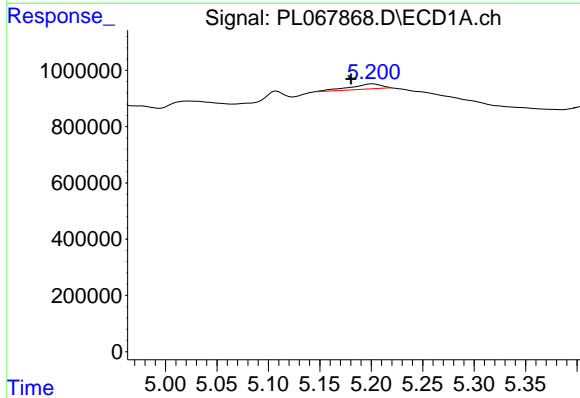
R.T.: 4.484 min  
 Delta R.T.: 0.003 min  
 Response: 9486528  
 Conc: 17.25 ng/ml

Instrument :  
 ECD\_L  
 ClientSampleId :  
 1-4-FEET-TP



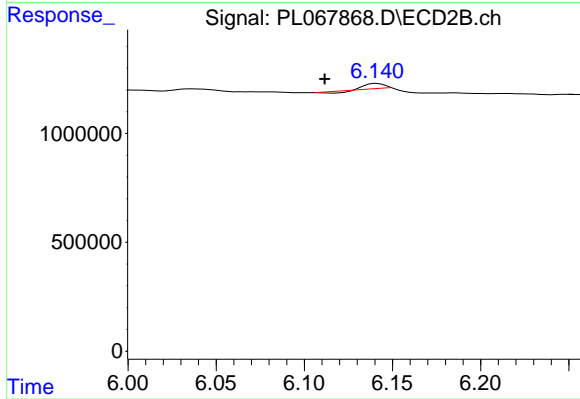
#1 Tetrachloro-m-xylene

R.T.: 5.528 min  
 Delta R.T.: -0.003 min  
 Response: 18137934  
 Conc: 19.24 ng/ml



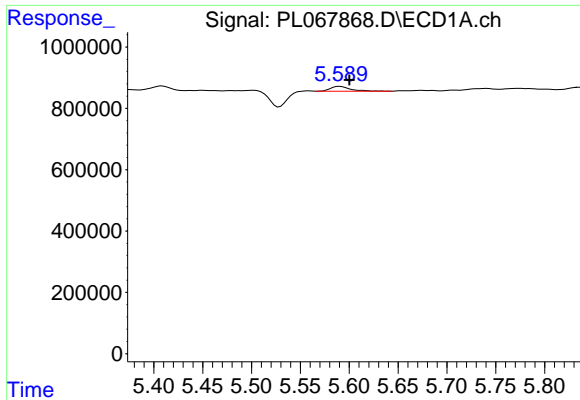
#2 alpha-BHC

R.T.: 5.201 min  
 Delta R.T.: 0.021 min  
 Response: 411019  
 Conc: 0.56 ng/ml



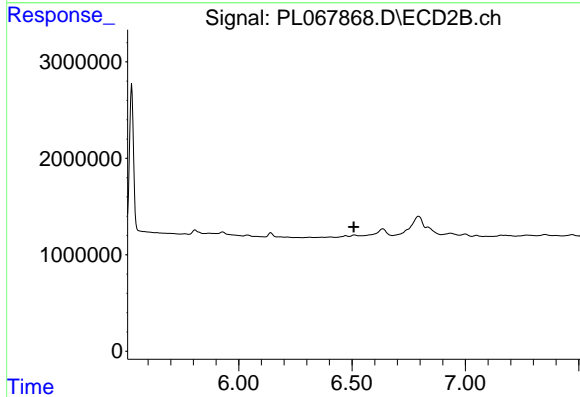
#2 alpha-BHC

R.T.: 6.141 min  
 Delta R.T.: 0.030 min  
 Response: 156307  
 Conc: 0.13 ng/ml

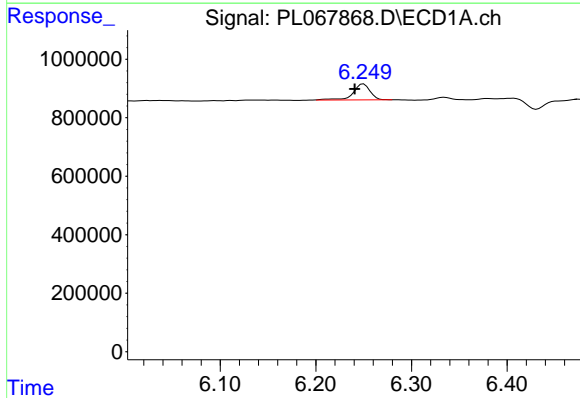


#3 gamma-BHC (Lindane)  
 R.T.: 5.590 min  
 Delta R.T.: -0.010 min  
 Response: 220683  
 Conc: 0.29 ng/ml

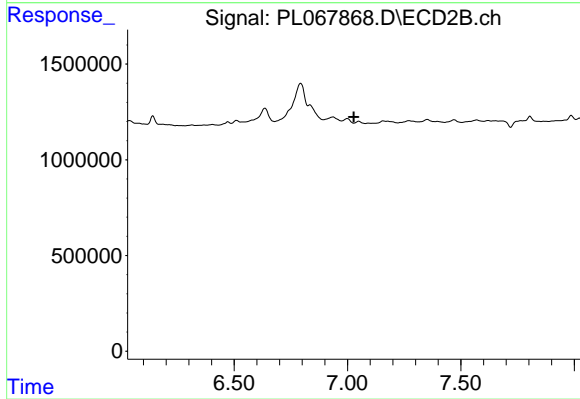
Instrument :  
 ECD\_L  
 ClientSampleId :  
 1-4-FEET-TP



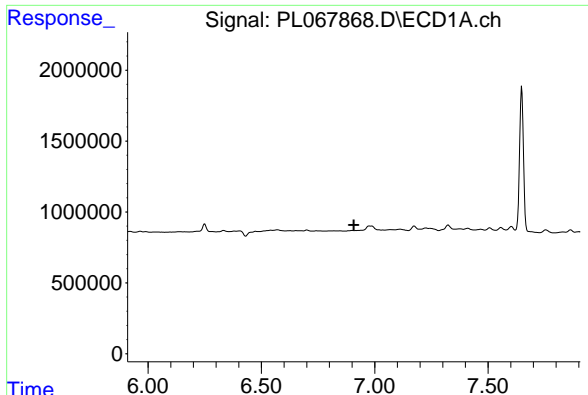
#3 gamma-BHC (Lindane)  
 R.T.: 0.000 min  
 Exp R.T. : 6.507 min  
 Response: 0  
 Conc: N.D.



#7 delta-BHC  
 R.T.: 6.250 min  
 Delta R.T.: 0.009 min  
 Response: 668793  
 Conc: 0.91 ng/ml

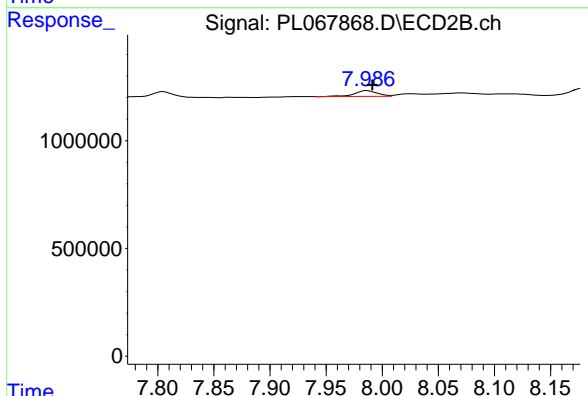


#7 delta-BHC  
 R.T.: 0.000 min  
 Exp R.T. : 7.028 min  
 Response: 0  
 Conc: N.D.

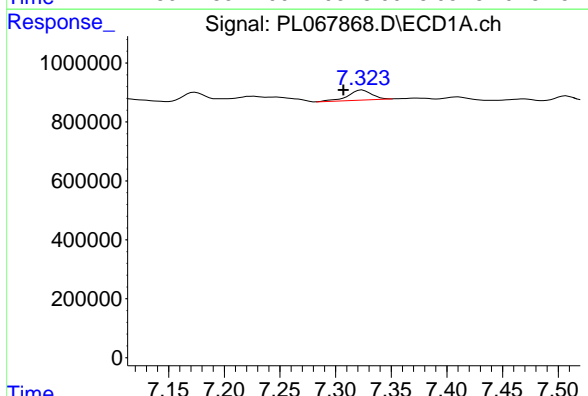


#8 Heptachlor epoxide  
 R.T.: 0.000 min  
 Exp R.T.: 6.907 min  
 Response: 0  
 Conc: N.D.

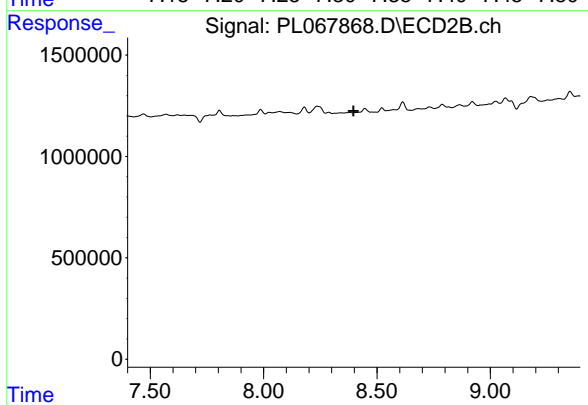
Instrument :  
 ECD\_L  
 ClientSampleId :  
 1-4-FEET-TP



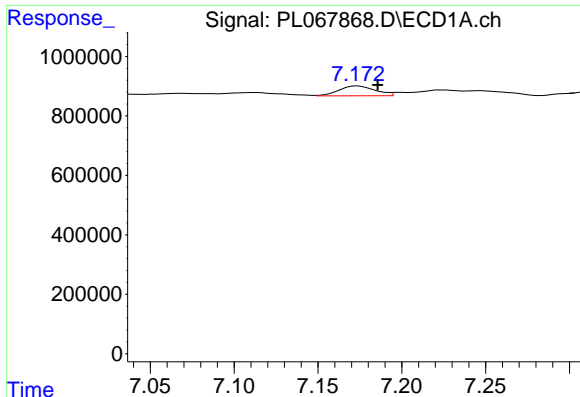
#8 Heptachlor epoxide  
 R.T.: 7.987 min  
 Delta R.T.: -0.004 min  
 Response: 370687  
 Conc: 0.37 ng/ml



#9 Endosulfan I  
 R.T.: 7.324 min  
 Delta R.T.: 0.017 min  
 Response: 500302  
 Conc: 0.74 ng/ml



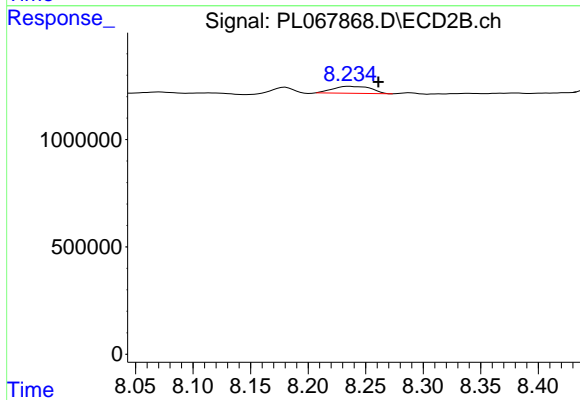
#9 Endosulfan I  
 R.T.: 0.000 min  
 Exp R.T.: 8.397 min  
 Response: 0  
 Conc: N.D.



#10 gamma-Chlordane

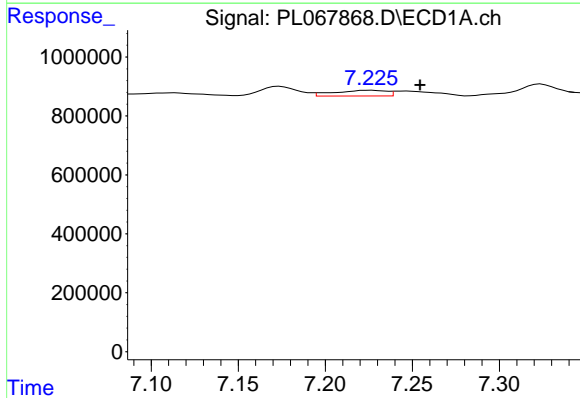
R.T.: 7.174 min  
Delta R.T.: -0.012 min  
Response: 495931  
Conc: 0.68 ng/ml

Instrument :  
ECD\_L  
ClientSampleId :  
1-4-FEET-TP



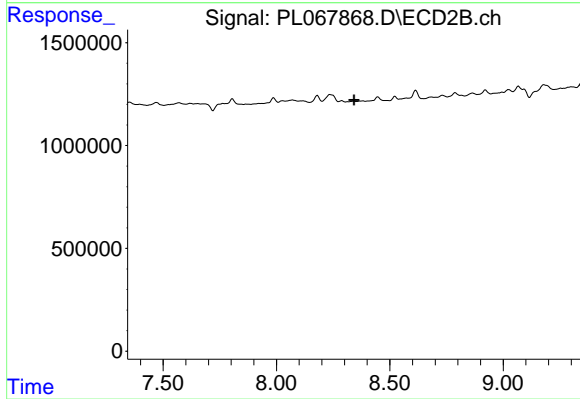
#10 gamma-Chlordane

R.T.: 8.236 min  
Delta R.T.: -0.026 min  
Response: 749095  
Conc: 0.74 ng/ml



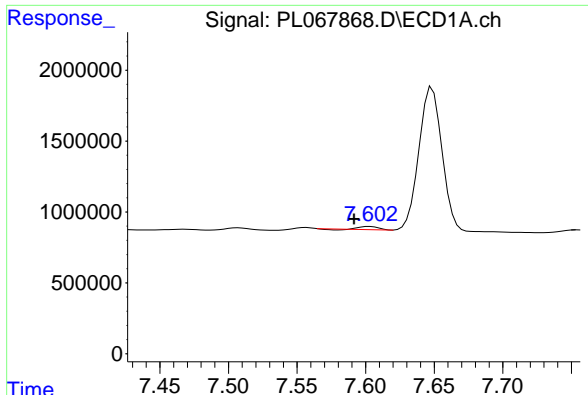
#11 alpha-Chlordane

R.T.: 7.226 min  
Delta R.T.: -0.029 min  
Response: 399180  
Conc: 0.55 ng/ml



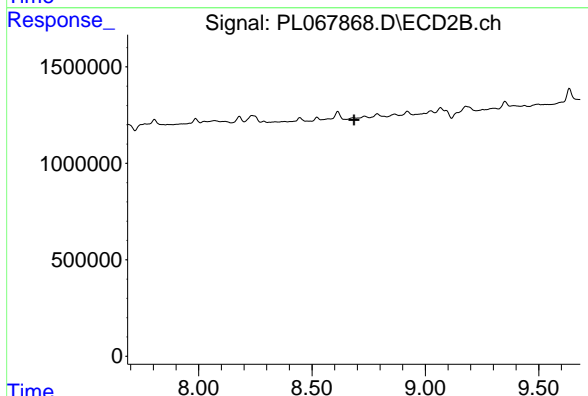
#11 alpha-Chlordane

R.T.: 0.000 min  
Exp R.T. : 8.342 min  
Response: 0  
Conc: N.D.

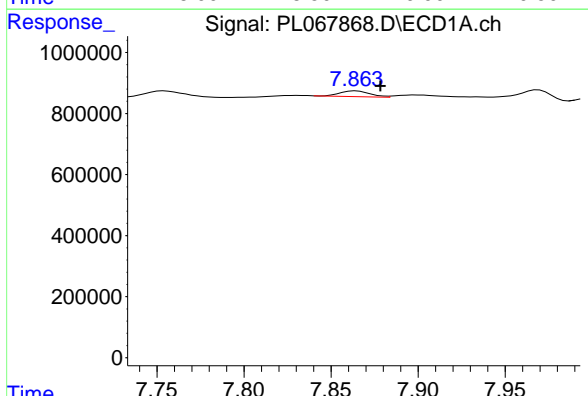


#13 Dieldrin  
 R.T.: 7.603 min  
 Delta R.T.: 0.011 min  
 Response: 186338  
 Conc: 0.27 ng/ml

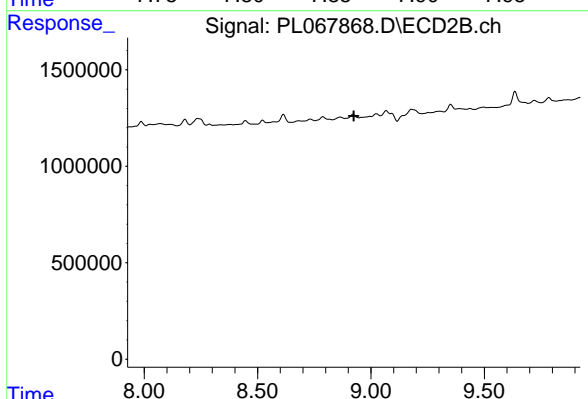
Instrument :  
 ECD\_L  
 ClientSampleId :  
 1-4-FEET-TP



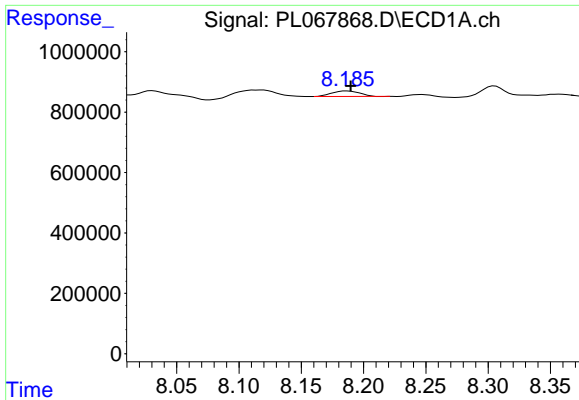
#13 Dieldrin  
 R.T.: 0.000 min  
 Exp R.T. : 8.685 min  
 Response: 0  
 Conc: N.D.



#14 Endrin  
 R.T.: 7.864 min  
 Delta R.T.: -0.014 min  
 Response: 226982  
 Conc: 0.35 ng/ml

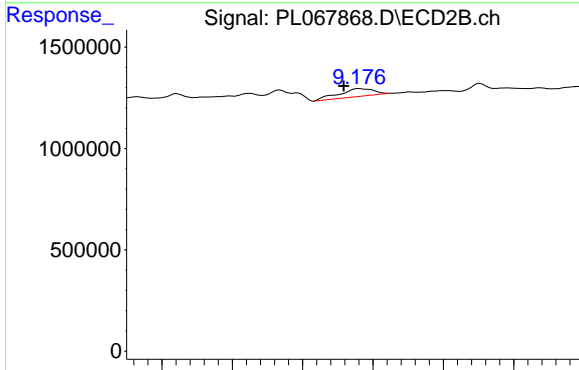


#14 Endrin  
 R.T.: 0.000 min  
 Exp R.T. : 8.924 min  
 Response: 0  
 Conc: N.D.

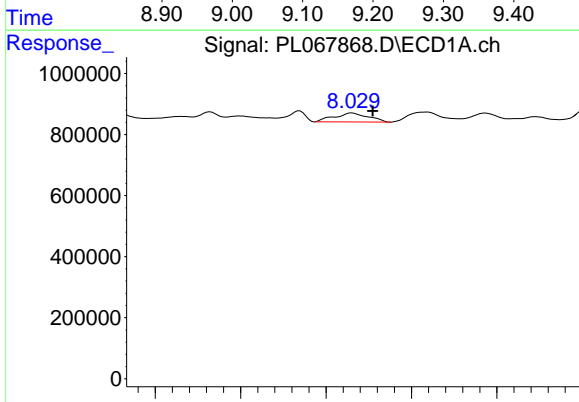


#15 Endosulfan II  
 R.T.: 8.187 min  
 Delta R.T.: -0.003 min  
 Response: 274661  
 Conc: 0.45 ng/ml

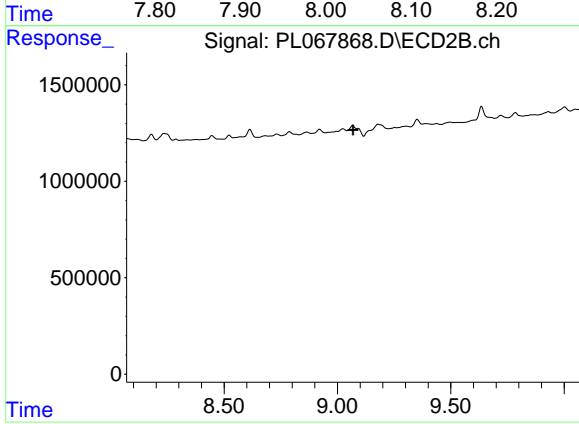
Instrument :  
 ECD\_L  
 ClientSampleId :  
 1-4-FEET-TP



#15 Endosulfan II  
 R.T.: 9.179 min  
 Delta R.T.: 0.021 min  
 Response: 1334090  
 Conc: 1.67 ng/ml

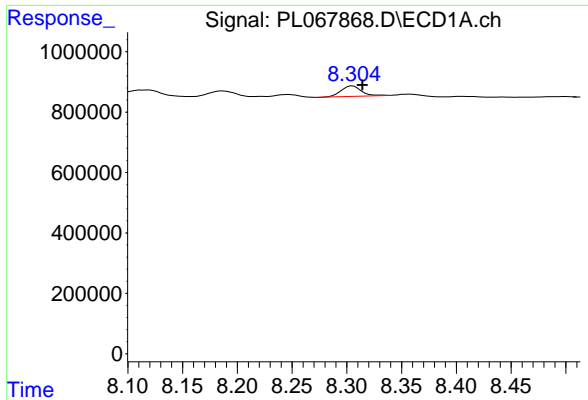


#16 4,4'-DDD  
 R.T.: 8.030 min  
 Delta R.T.: -0.024 min  
 Response: 814562  
 Conc: 1.40 ng/ml



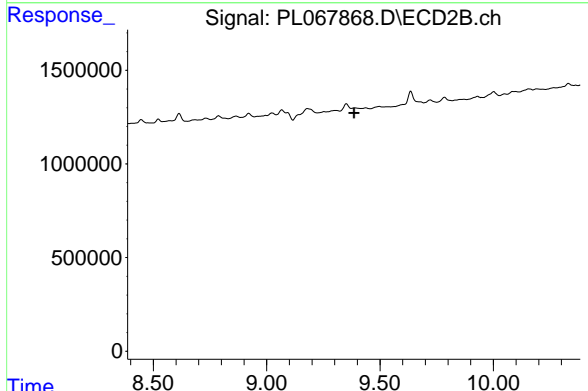
#16 4,4'-DDD  
 R.T.: 0.000 min  
 Exp R.T.: 9.069 min  
 Response: 0  
 Conc: N.D.



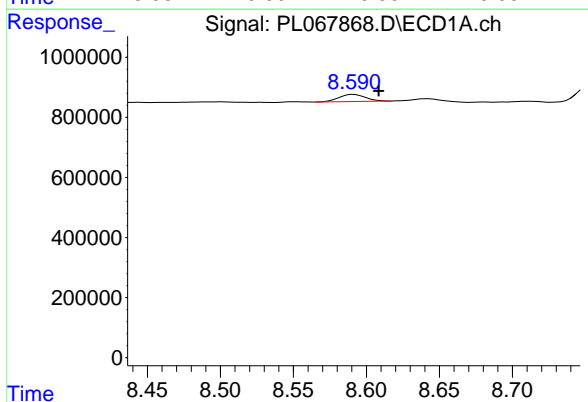


#17 4,4'-DDT  
 R.T.: 8.305 min  
 Delta R.T.: -0.009 min  
 Response: 435720  
 Conc: 0.75 ng/ml

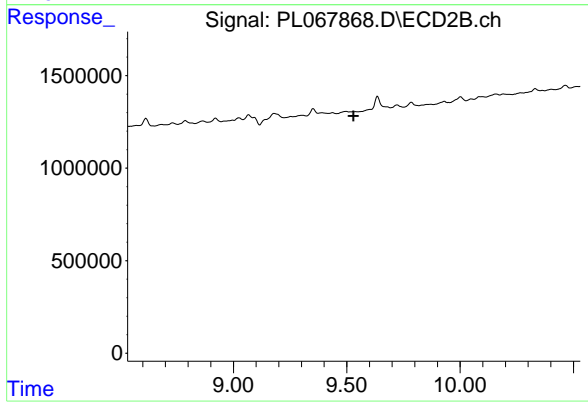
Instrument :  
 ECD\_L  
 ClientSampleId :  
 1-4-FEET-TP



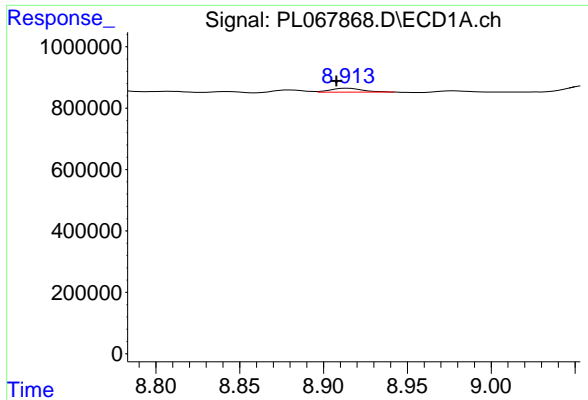
#17 4,4'-DDT  
 R.T.: 0.000 min  
 Exp R.T. : 9.386 min  
 Response: 0  
 Conc: N.D.



#19 Endosulfan Sulfate  
 R.T.: 8.591 min  
 Delta R.T.: -0.017 min  
 Response: 295936  
 Conc: 0.47 ng/ml

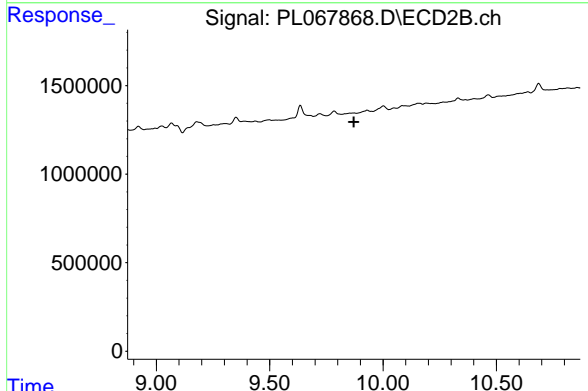


#19 Endosulfan Sulfate  
 R.T.: 0.000 min  
 Exp R.T. : 9.530 min  
 Response: 0  
 Conc: N.D.

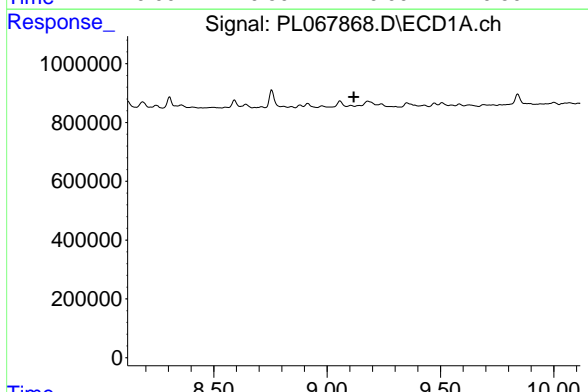


#20 Methoxychlor  
 R.T.: 8.914 min  
 Delta R.T.: 0.007 min  
 Response: 165281  
 Conc: 0.46 ng/ml

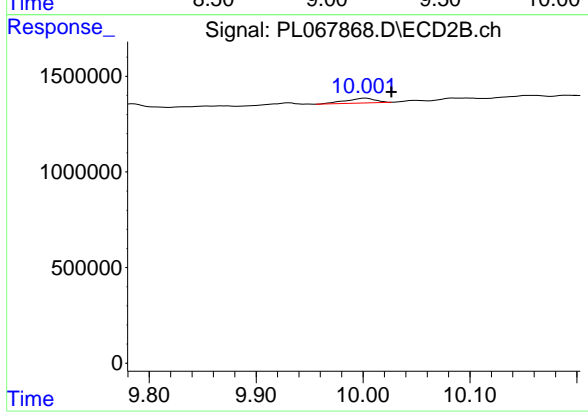
Instrument :  
 ECD\_L  
 ClientSampleId :  
 1-4-FEET-TP



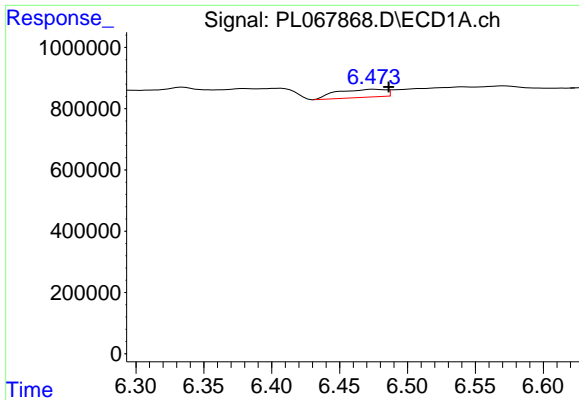
#20 Methoxychlor  
 R.T.: 0.000 min  
 Exp R.T. : 9.872 min  
 Response: 0  
 Conc: N.D.



#21 Endrin ketone  
 R.T.: 0.000 min  
 Exp R.T. : 9.118 min  
 Response: 0  
 Conc: N.D.



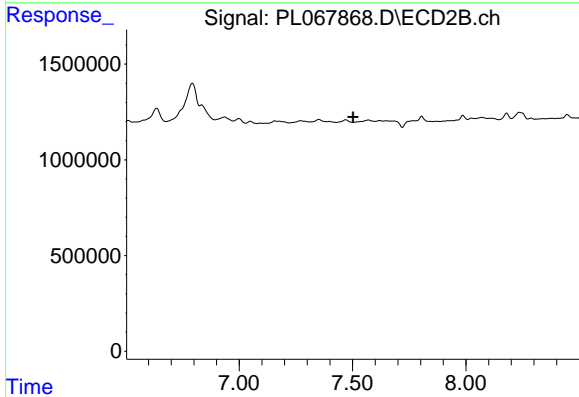
#21 Endrin ketone  
 R.T.: 10.002 min  
 Delta R.T.: -0.024 min  
 Response: 472896  
 Conc: 0.52 ng/ml



#24 Chlordane-2

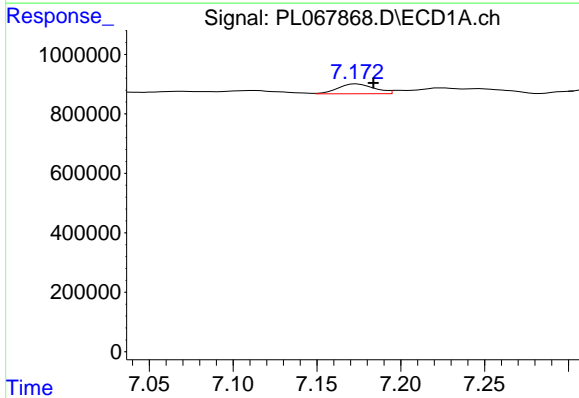
R.T.: 6.475 min  
 Delta R.T.: -0.011 min  
 Response: 644859  
 Conc: 24.08 ng/ml

Instrument :  
 ECD\_L  
 ClientSampleId :  
 1-4-FEET-TP



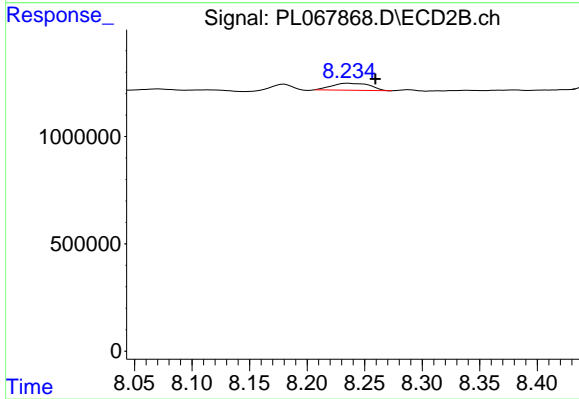
#24 Chlordane-2

R.T.: 0.000 min  
 Exp R.T. : 7.503 min  
 Response: 0  
 Conc: N.D.



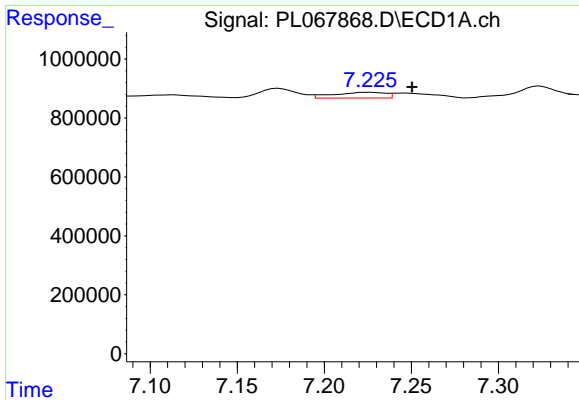
#25 Chlordane-3

R.T.: 7.174 min  
 Delta R.T.: -0.010 min  
 Response: 495931  
 Conc: 7.38 ng/ml



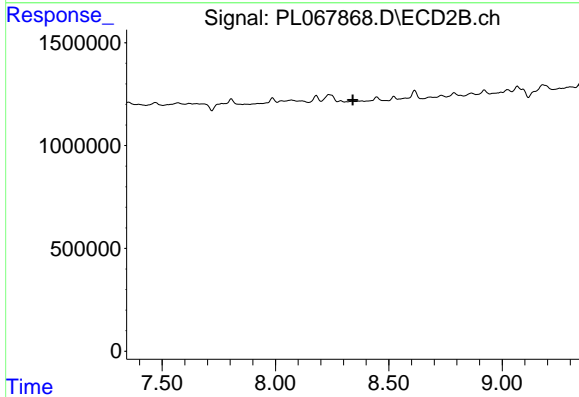
#25 Chlordane-3

R.T.: 8.236 min  
 Delta R.T.: -0.024 min  
 Response: 749095  
 Conc: 5.60 ng/ml

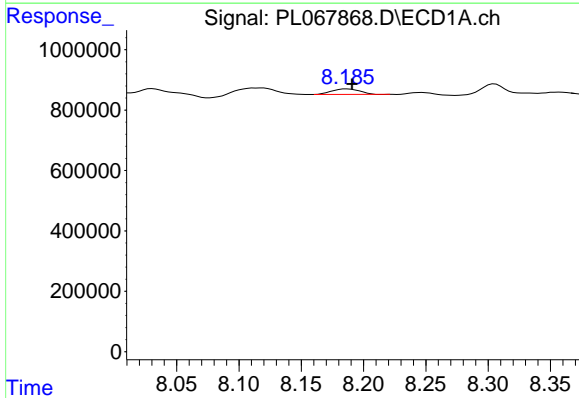


#26 Chlordane-4  
 R.T.: 7.226 min  
 Delta R.T.: -0.025 min  
 Response: 399180  
 Conc: 5.46 ng/ml

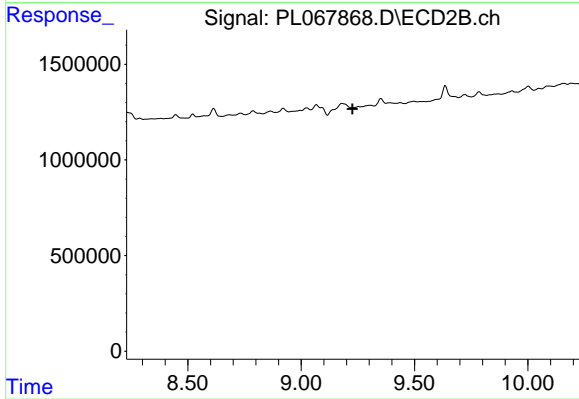
Instrument :  
 ECD\_L  
 ClientSampleId :  
 1-4-FEET-TP



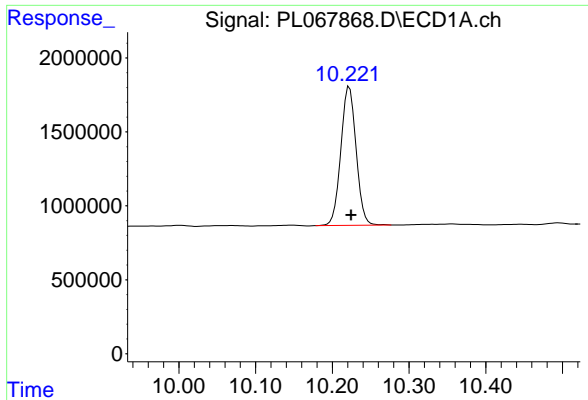
#26 Chlordane-4  
 R.T.: 0.000 min  
 Exp R.T. : 8.341 min  
 Response: 0  
 Conc: N.D.



#27 Chlordane-5  
 R.T.: 8.187 min  
 Delta R.T.: -0.004 min  
 Response: 274661  
 Conc: 12.55 ng/ml



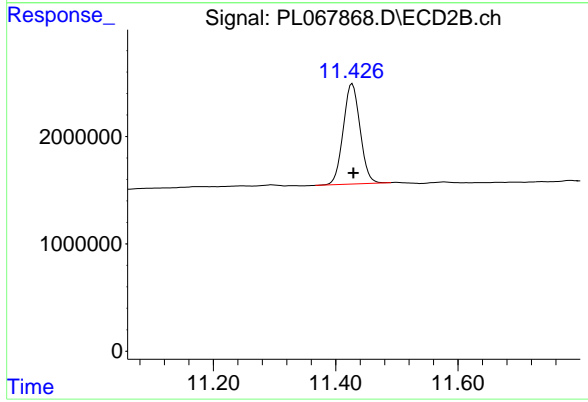
#27 Chlordane-5  
 R.T.: 0.000 min  
 Exp R.T. : 9.227 min  
 Response: 0  
 Conc: N.D.



#28 Decachlorobiphenyl

R.T.: 10.222 min  
Delta R.T.: -0.002 min  
Response: 13018324  
Conc: 18.37 ng/ml

Instrument :  
ECD\_L  
ClientSampled :  
1-4-FEET-TP



#28 Decachlorobiphenyl

R.T.: 11.427 min  
Delta R.T.: -0.001 min  
Response: 17880273  
Conc: 17.95 ng/ml