

Data Path : Z:\pestpcbsrv\HPCHEM1\ECD\_L\Data\PL062921\  
 Data File : PL067876.D  
 Signal(s) : Signal #1: ECD1A.ch Signal #2: ECD2B.ch  
 Acq On : 29 Jun 2021 16:10  
 Operator : AR\AJ  
 Sample : I.BLK  
 Misc :  
 ALS Vial : 2 Sample Multiplier: 1

Instrument :  
 ECD\_L  
 ClientSampleId :  
 I.BLK

Integration File signal 1: autoint1.e  
 Integration File signal 2: autoint2.e  
 Quant Time: Jun 30 02:58:35 2021  
 Quant Method : Z:\pestpcbsrv\HPCHEM1\ECD\_L\methods\PL061021.M  
 Quant Title : GC Extractables  
 QLast Update : Fri Jun 11 02:00:12 2021  
 Response via : Initial Calibration  
 Integrator: ChemStation

Volume Inj. : 1 µl  
 Signal #1 Phase : ZB-MR2 Signal #2 Phase: ZB-MR1  
 Signal #1 Info : 30M x 0.32mm x0.2 Signal #2 Info : 30M x 0.32mm x0.5µm

Compound	RT#1	RT#2	Resp#1	Resp#2	ng/ml	ng/ml
-----						
System Monitoring Compounds						
1) SA Tetrachlo...	4.481	5.526	10932586	19923755	19.885	21.134
28) SA Decachlor...	10.218	11.422	13786171	19920481	19.453	19.999

Target Compounds

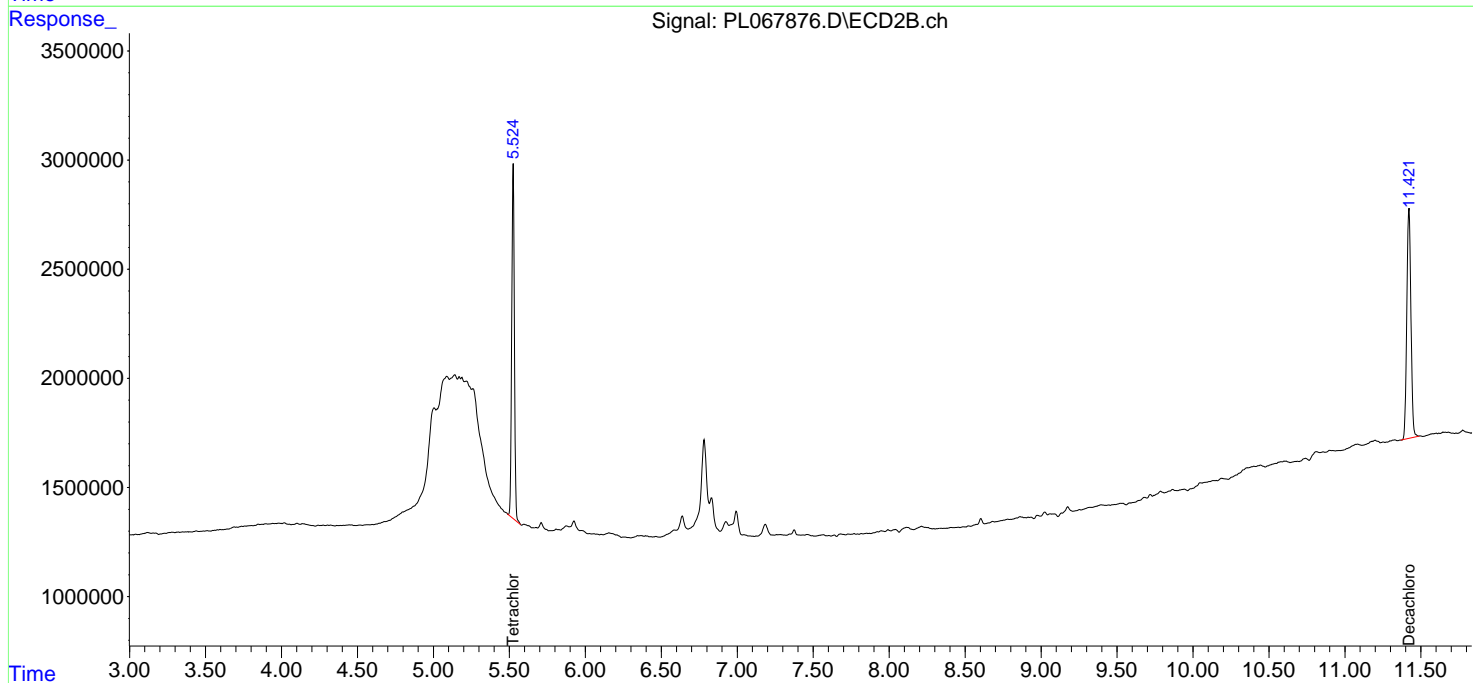
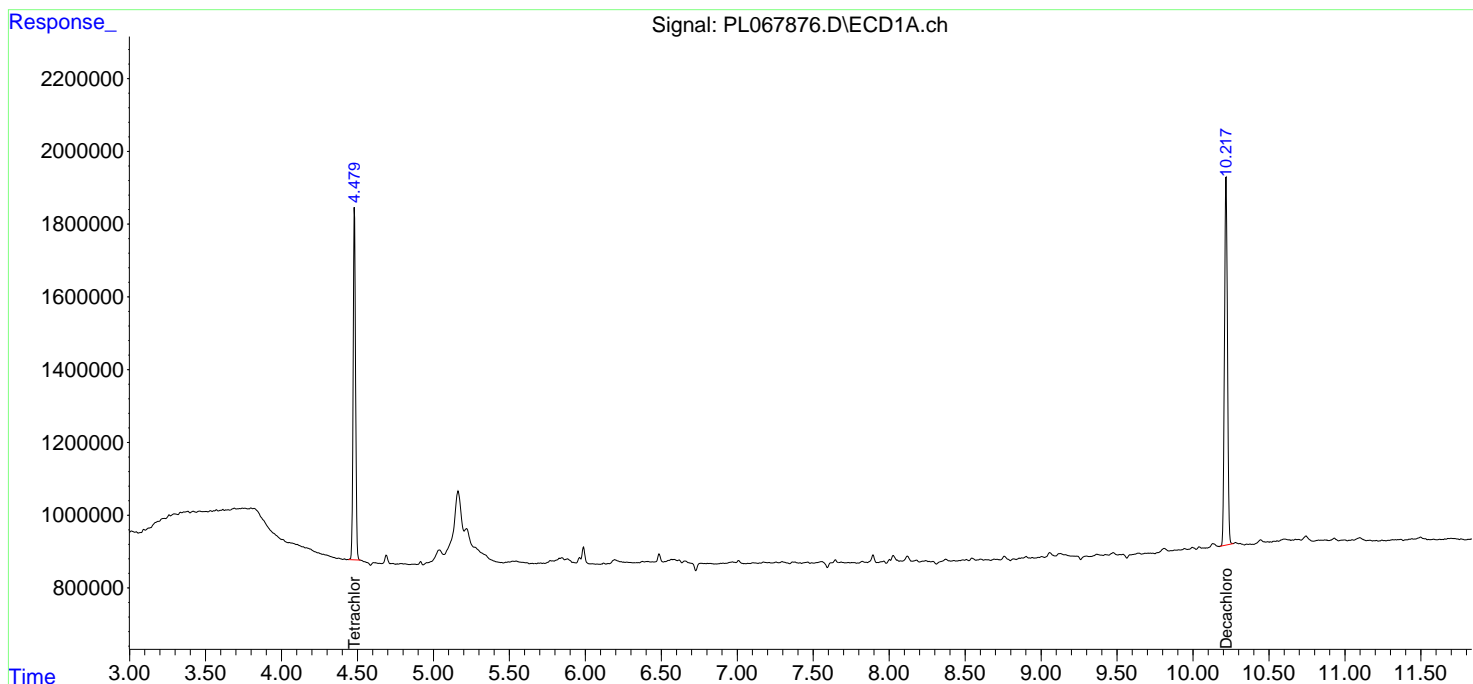
(f)=RT Delta > 1/2 Window (#)=Amounts differ by > 25% (m)=manual int.

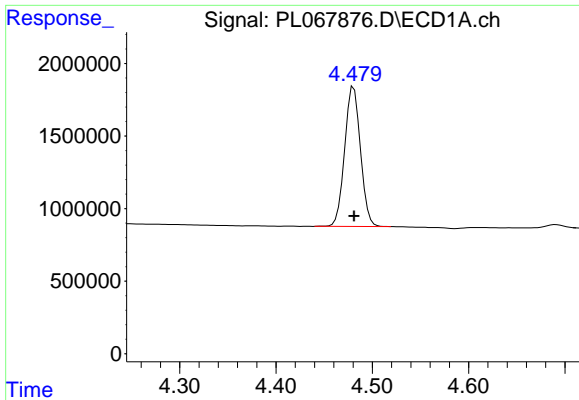
Data Path : Z:\pestpcbsrv\HPCHEM1\ECD\_L\Data\PL062921\  
 Data File : PL067876.D  
 Signal(s) : Signal #1: ECD1A.ch Signal #2: ECD2B.ch  
 Acq On : 29 Jun 2021 16:10  
 Operator : AR\AJ  
 Sample : I.BLK  
 Misc :  
 ALS Vial : 2 Sample Multiplier: 1

Instrument :  
 ECD\_L  
 ClientSampled :  
 I.BLK

Integration File signal 1: autoint1.e  
 Integration File signal 2: autoint2.e  
 Quant Time: Jun 30 02:58:35 2021  
 Quant Method : Z:\pestpcbsrv\HPCHEM1\ECD\_L\methods\PL061021.M  
 Quant Title : GC Extractables  
 QLast Update : Fri Jun 11 02:00:12 2021  
 Response via : Initial Calibration  
 Integrator: ChemStation

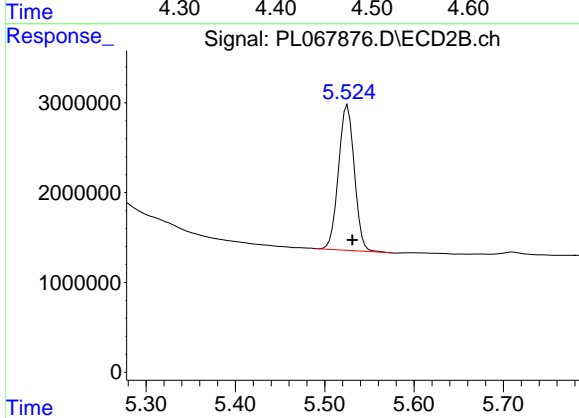
Volume Inj. : 1 µl  
 Signal #1 Phase : ZB-MR2 Signal #2 Phase: ZB-MR1  
 Signal #1 Info : 30M x 0.32mm x0.2 Signal #2 Info : 30M x 0.32mm x0.5µm



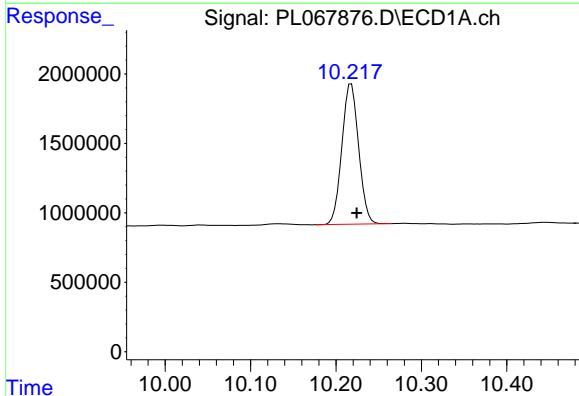


#1 Tetrachloro-m-xylene  
R.T.: 4.481 min  
Delta R.T.: 0.000 min  
Response: 10932586  
Conc: 19.89 ng/ml

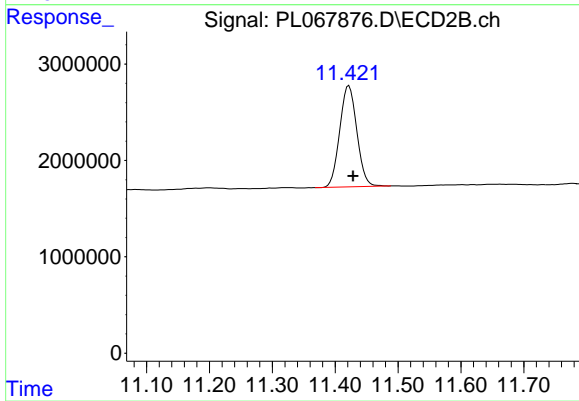
Instrument :  
ECD\_L  
ClientSampleId :  
I.BLK



#1 Tetrachloro-m-xylene  
R.T.: 5.526 min  
Delta R.T.: -0.005 min  
Response: 19923755  
Conc: 21.13 ng/ml



#28 Decachlorobiphenyl  
R.T.: 10.218 min  
Delta R.T.: -0.006 min  
Response: 13786171  
Conc: 19.45 ng/ml



#28 Decachlorobiphenyl  
R.T.: 11.422 min  
Delta R.T.: -0.007 min  
Response: 19920481  
Conc: 20.00 ng/ml