

Data Path : Z:\pestpcbsrv\HPCHEM1\ECD_L\Data\PL062924\
 Data File : PL090402.D
 Signal(s) : Signal #1: ECD1A.ch Signal #2: ECD2B.ch
 Acq On : 28 Jun 2024 21:03
 Operator : AR\AJ
 Sample : P3115-14
 Misc :
 ALS Vial : 24 Sample Multiplier: 1

Instrument :
 ECD_L
 ClientSampleId :

Integration File signal 1: autoint1.e
 Integration File signal 2: autoint2.e
 Quant Time: Jun 29 01:16:13 2024
 Quant Method : Z:\pestpcbsrv\HPCHEM1\ECD_L\methods\PL062424.M
 Quant Title : GC Extractables
 QLast Update : Tue Jun 25 11:05:38 2024
 Response via : Initial Calibration
 Integrator: ChemStation

Volume Inj. : 1 µl
 Signal #1 Phase : ZB-MR2 Signal #2 Phase: ZB-MR1
 Signal #1 Info : 30M x 0.32mm x0.2 Signal #2 Info : 30M x 0.32mm x0.5µm

Compound	RT#1	RT#2	Resp#1	Resp#2	ng/ml	ng/ml

System Monitoring Compounds						
1) SA Tetrachlo...	3.553	2.803	14934857	11706293	6.580	7.401
28) SA Decachlor...	9.057	7.933	23737639	19779102	15.392	13.259
Target Compounds						
3) MA gamma-BHC...	4.347	3.616	2699291	623461	0.898	0.292 #
4) MA Heptachlor	0.000	3.993f	0	15751984	N.D.	7.577 #
5) MB Aldrin	0.000	4.235	0	12970895	N.D.	6.556 #
6) B beta-BHC	4.516	3.894f	5549553	1372651	4.120	1.422 #
7) B delta-BHC	4.773	4.143	-169893	194646	N.D.	0.096
8) B Heptachlo...	5.690	4.753	144.7E6	226587	56.742	0.123 #
9) A Endosulfan I	6.064	0.000	1085649	0	0.461	N.D. #
10) B gamma-Chl...	5.971f	4.984f	3687714	186.4E6	1.459	97.275 #
11) B alpha-Chl...	6.032	5.056	277197	6636977	0.111	3.465 #
12) B 4,4'-DDE	6.222f	5.244	117.9E6	-1907173	53.991	N.D. #
13) MA Dieldrin	6.352	5.360f	319.6E6	24409340	130.723	13.234 #
14) MA Endrin	6.578	5.668	65376463	89234326	30.834	53.965 #
15) B Endosulfa...	6.796	5.948	145.2E6	60753275	65.647	37.027 #
16) A 4,4'-DDD	6.727	0.000	880.2E6	0	480.445	N.D. #
17) MA 4,4'-DDT	7.002f	6.053	832.2E6	833.0E6	433.689	562.784 #
18) B Endrin al...	6.955f	6.151f	53897413	277.4E6	31.922	217.799 #
19) B Endosulfa...	7.144f	6.352	242.1E6	604.4E6	122.222	386.537 #
20) A Methoxychlor	7.491	6.608f	20313333	162.5E6	19.711	194.793 #
21) B Endrin ke...	7.621f	6.860	1471.2E6	8482111	678.244	4.737 #
22) Mirex	8.100f	0.000	531429	0	0.306	N.D. #
23) Chlordane-1	4.705	3.814f	1641542	494949	16.712	8.129 #
24) Chlordane-2	5.235	4.379	29516	78488	0.249	1.111 #
25) Chlordane-3	5.923f	4.984	190.3E6	186.4E6	517.728	923.350 #
26) Chlordane-4	6.032	5.056	277197	6636977	0.621	34.763 #
27) Chlordane-5	6.850f	5.730	361.3E6	757.9E6	4011.785	12546.709 #

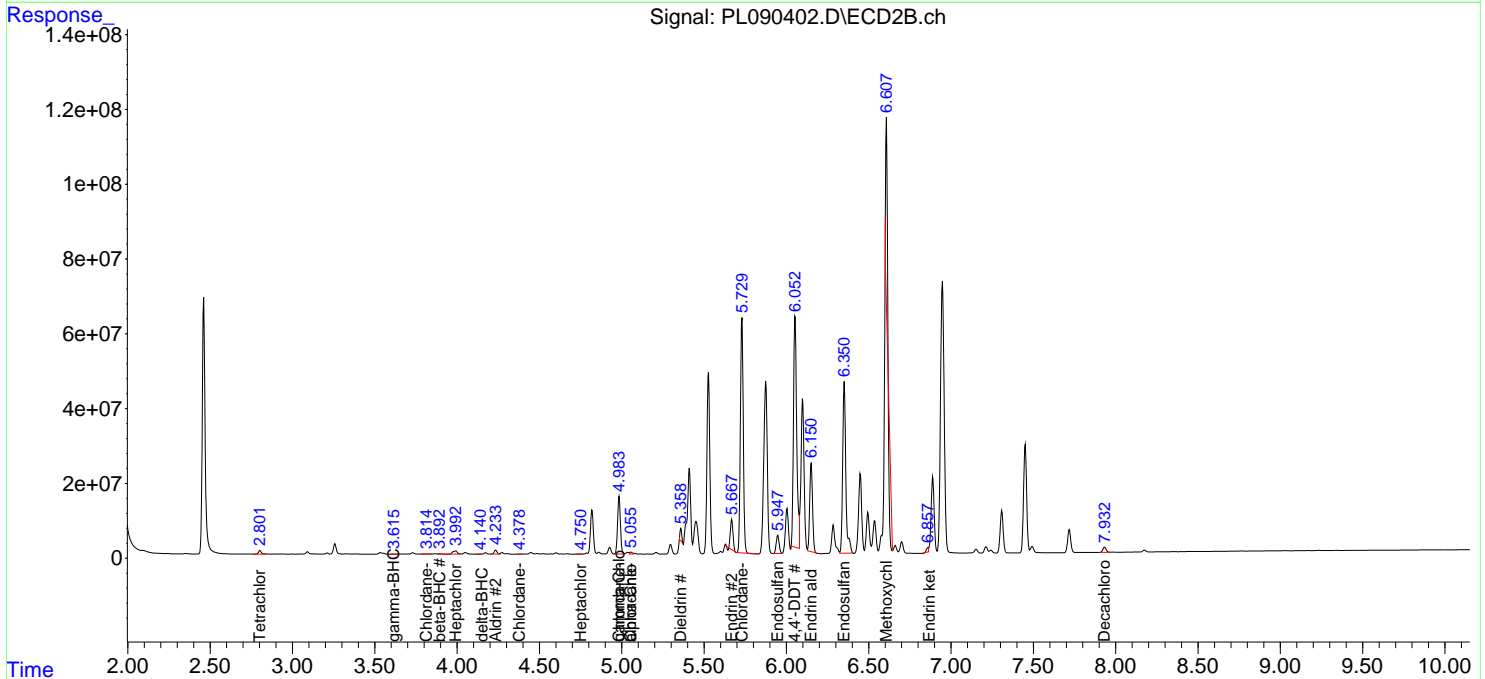
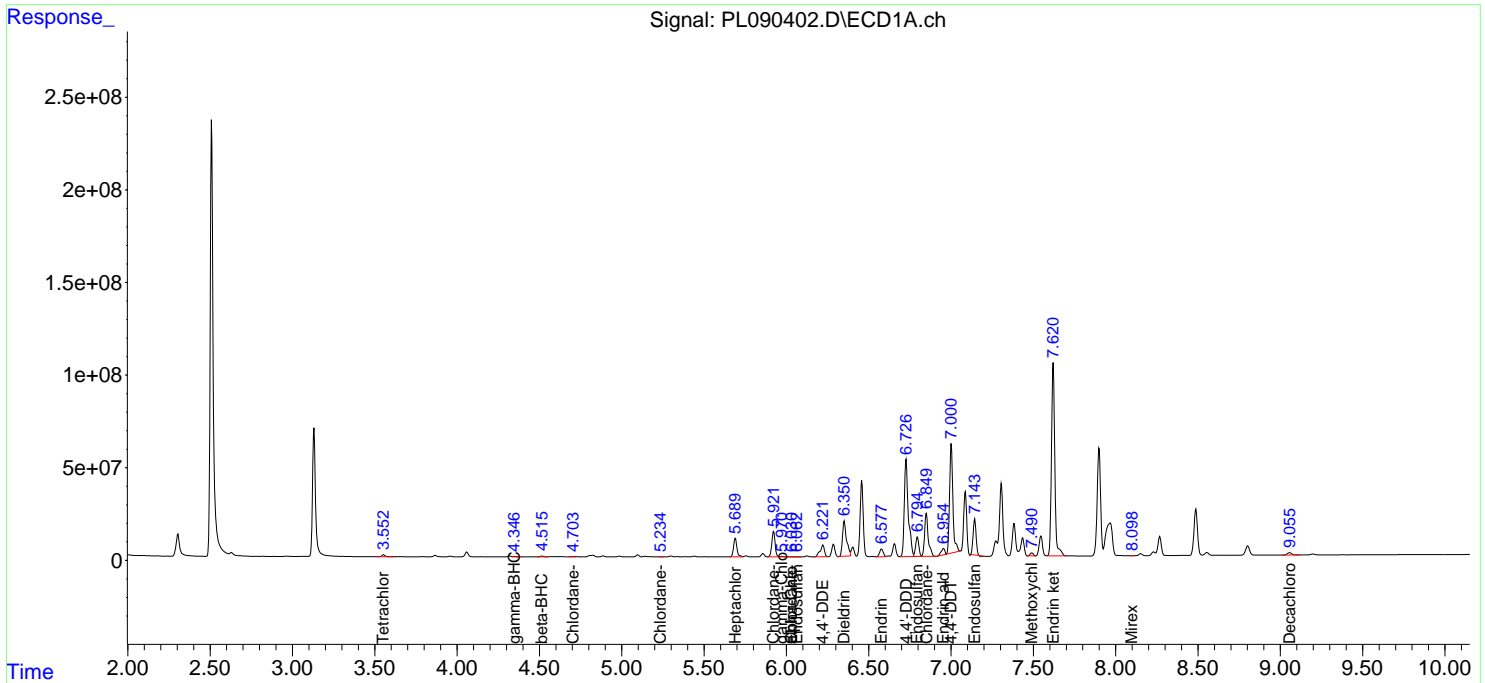
(f)=RT Delta > 1/2 Window (#)=Amounts differ by > 25% (m)=manual int.

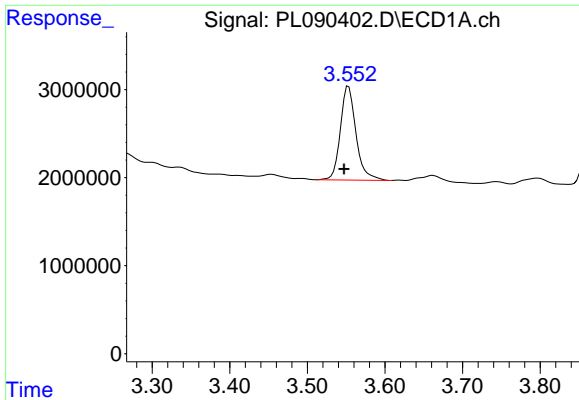
Data Path : Z:\pestpcbsrv\HPCHEM1\ECD_L\Data\PL062924\
 Data File : PL090402.D
 Signal(s) : Signal #1: ECD1A.ch Signal #2: ECD2B.ch
 Acq On : 28 Jun 2024 21:03
 Operator : AR\AJ
 Sample : P3115-14
 Misc :
 ALS Vial : 24 Sample Multiplier: 1

Instrument :
 ECD_L
 ClientSampleId :

Integration File signal 1: autoint1.e
 Integration File signal 2: autoint2.e
 Quant Time: Jun 29 01:16:13 2024
 Quant Method : Z:\pestpcbsrv\HPCHEM1\ECD_L\methods\PL062424.M
 Quant Title : GC Extractables
 QLast Update : Tue Jun 25 11:05:38 2024
 Response via : Initial Calibration
 Integrator: ChemStation

Volume Inj. : 1 µl
 Signal #1 Phase : ZB-MR2 Signal #2 Phase: ZB-MR1
 Signal #1 Info : 30M x 0.32mm x0.2 Signal #2 Info : 30M x 0.32mm x0.5µm

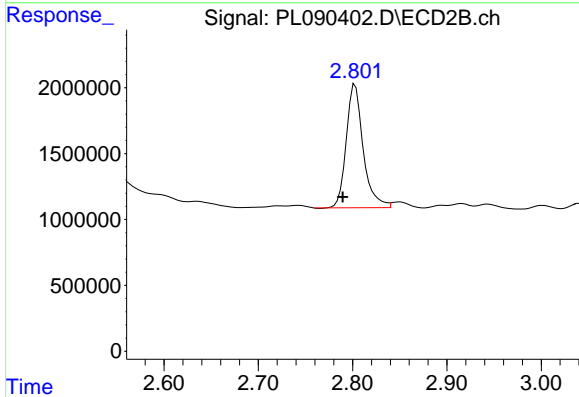




#1 Tetrachloro-m-xylene

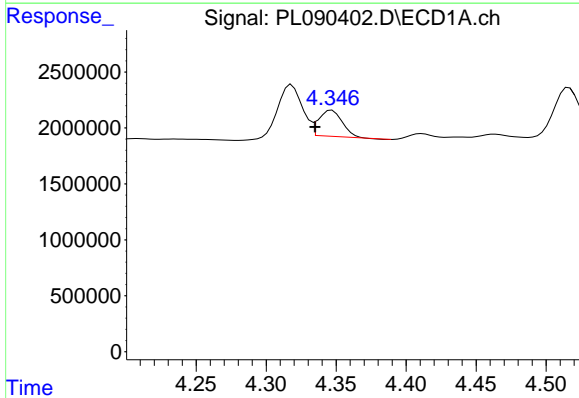
R.T.: 3.553 min
 Delta R.T.: 0.006 min
 Response: 14934857
 Conc: 6.58 ng/ml

Instrument :
 ECD_L
 ClientSampleId :



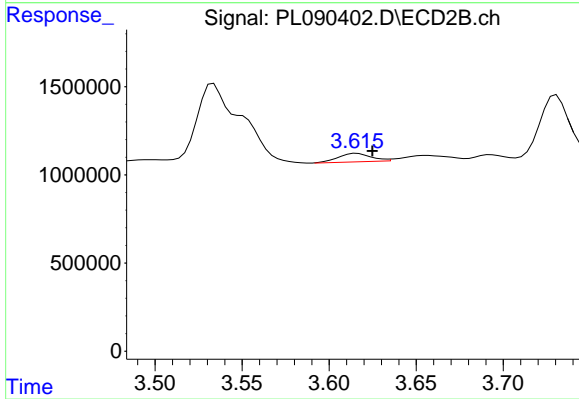
#1 Tetrachloro-m-xylene

R.T.: 2.803 min
 Delta R.T.: 0.013 min
 Response: 11706293
 Conc: 7.40 ng/ml



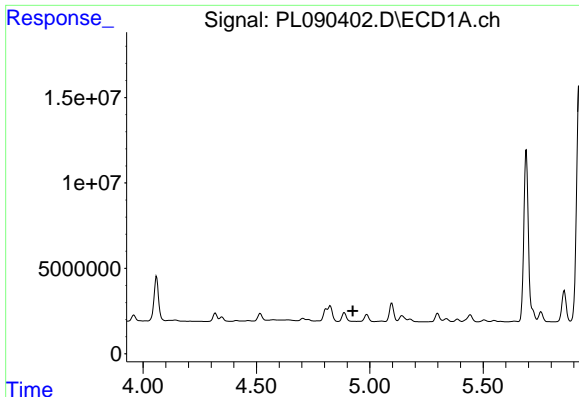
#3 gamma-BHC (Lindane)

R.T.: 4.347 min
 Delta R.T.: 0.012 min
 Response: 2699291
 Conc: 0.90 ng/ml



#3 gamma-BHC (Lindane)

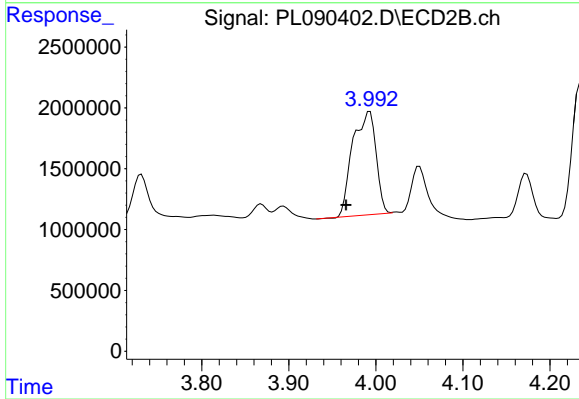
R.T.: 3.616 min
 Delta R.T.: -0.009 min
 Response: 623461
 Conc: 0.29 ng/ml



#4 Heptachlor

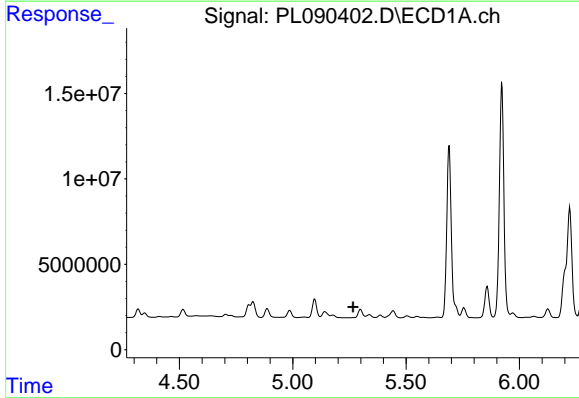
R.T.: 0.000 min
Exp R.T.: 4.924 min
Response: 0
Conc: N.D.

Instrument :
ECD_L
ClientSampleId :



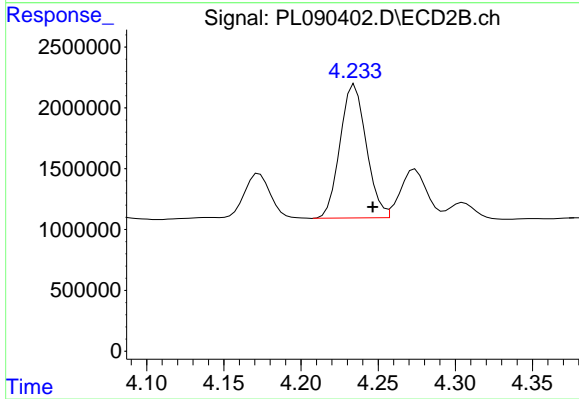
#4 Heptachlor

R.T.: 3.993 min
Delta R.T.: 0.027 min
Response: 15751984
Conc: 7.58 ng/ml



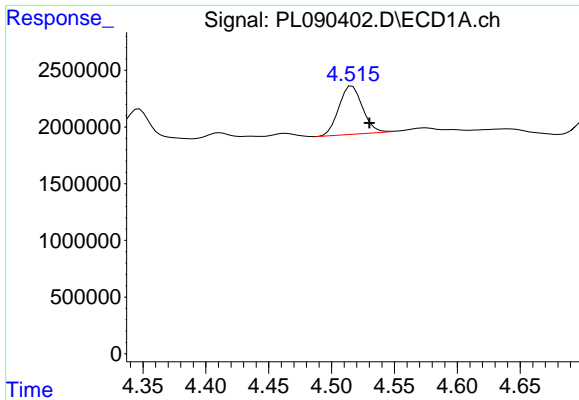
#5 Aldrin

R.T.: 0.000 min
Exp R.T.: 5.266 min
Response: 0
Conc: N.D.



#5 Aldrin

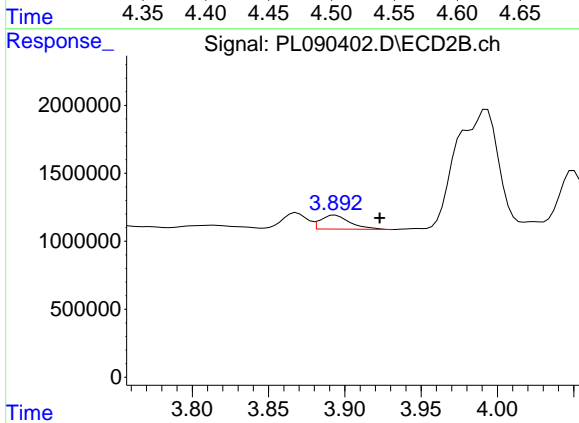
R.T.: 4.235 min
Delta R.T.: -0.012 min
Response: 12970895
Conc: 6.56 ng/ml



#6 beta-BHC

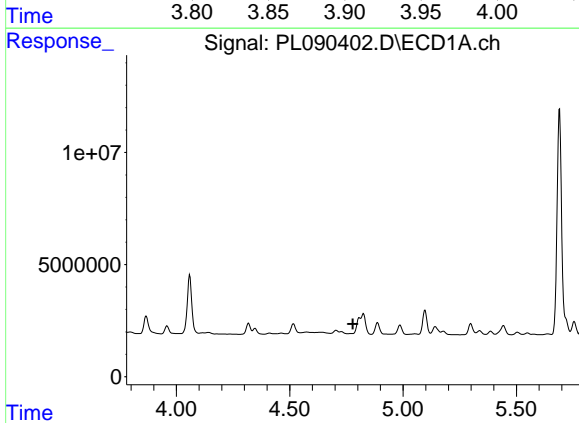
R.T.: 4.516 min
 Delta R.T.: -0.014 min
 Response: 5549553
 Conc: 4.12 ng/ml

Instrument :
 ECD_L
 ClientSampleId :



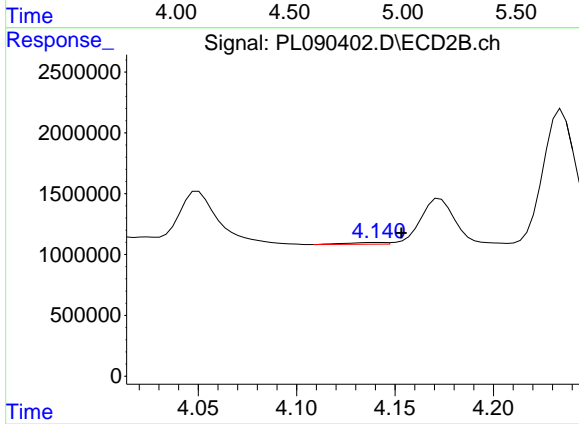
#6 beta-BHC

R.T.: 3.894 min
 Delta R.T.: -0.029 min
 Response: 1372651
 Conc: 1.42 ng/ml



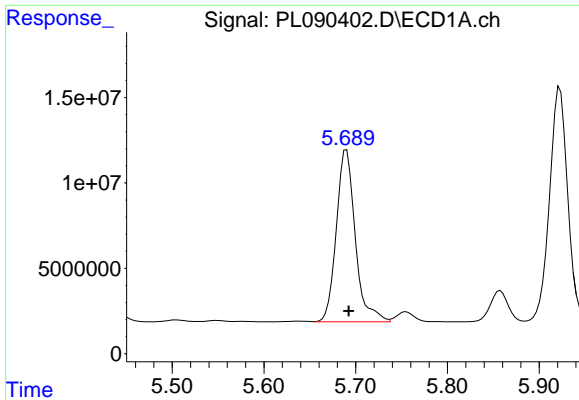
#7 delta-BHC

R.T.: 4.773 min
 Delta R.T.: -0.006 min
 Response: -169893
 Conc: N.D.



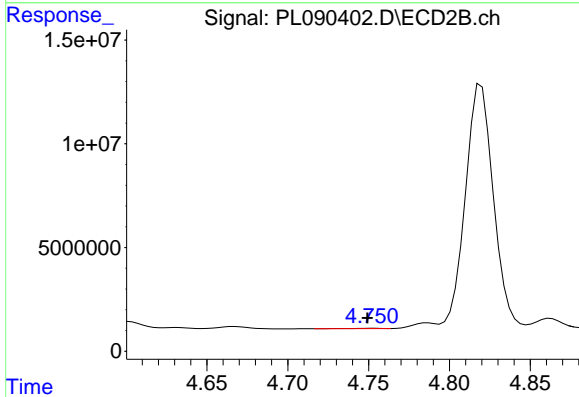
#7 delta-BHC

R.T.: 4.143 min
 Delta R.T.: -0.010 min
 Response: 194646
 Conc: 0.10 ng/ml

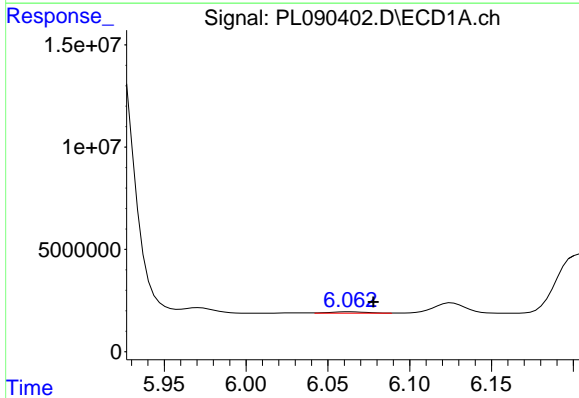


#8 Heptachlor epoxide
 R.T.: 5.690 min
 Delta R.T.: -0.003 min
 Response: 144698607
 Conc: 56.74 ng/ml

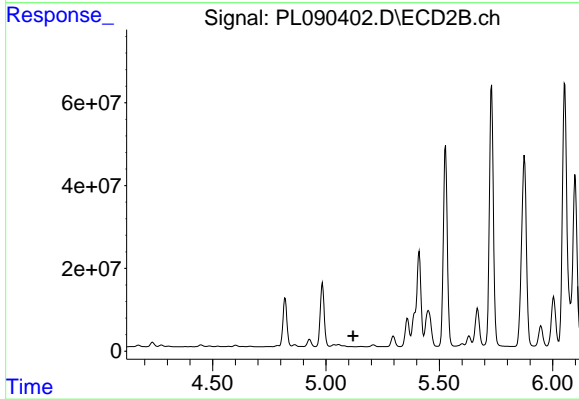
Instrument :
 ECD_L
 ClientSampleId :



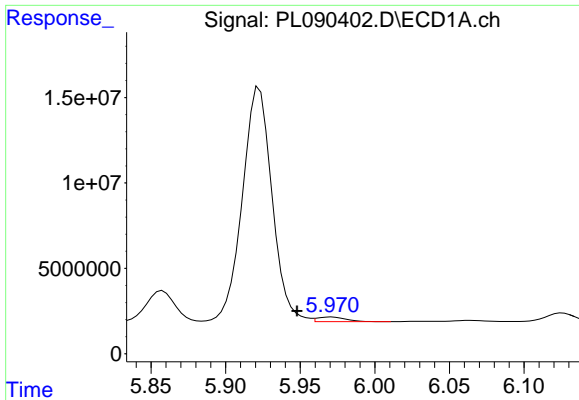
#8 Heptachlor epoxide
 R.T.: 4.753 min
 Delta R.T.: 0.003 min
 Response: 226587
 Conc: 0.12 ng/ml



#9 Endosulfan I
 R.T.: 6.064 min
 Delta R.T.: -0.014 min
 Response: 1085649
 Conc: 0.46 ng/ml



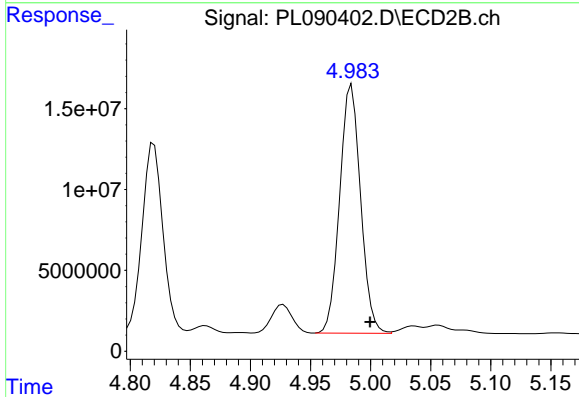
#9 Endosulfan I
 R.T.: 0.000 min
 Exp R.T. : 5.119 min
 Response: 0
 Conc: N.D.



#10 gamma-Chlordane

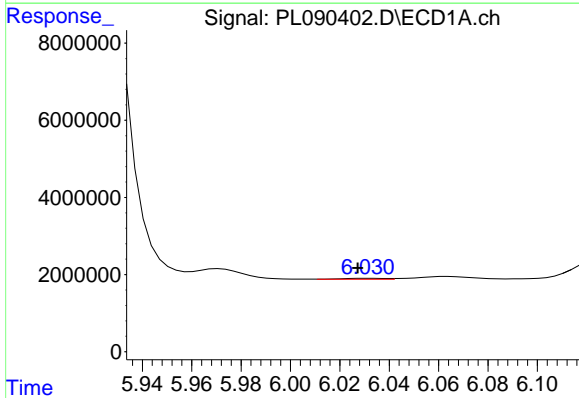
R.T.: 5.971 min
 Delta R.T.: 0.023 min
 Response: 3687714
 Conc: 1.46 ng/ml

Instrument :
 ECD_L
 ClientSampleId :



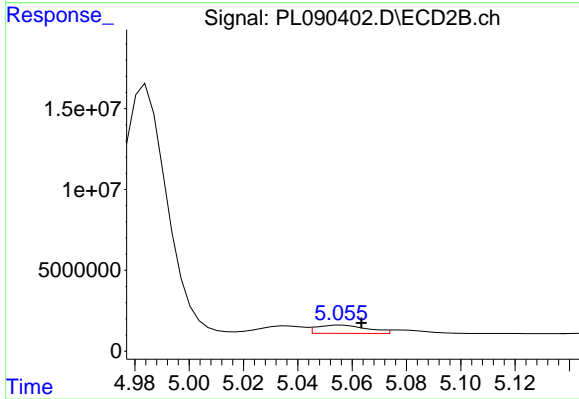
#10 gamma-Chlordane

R.T.: 4.984 min
 Delta R.T.: -0.015 min
 Response: 186433847
 Conc: 97.28 ng/ml



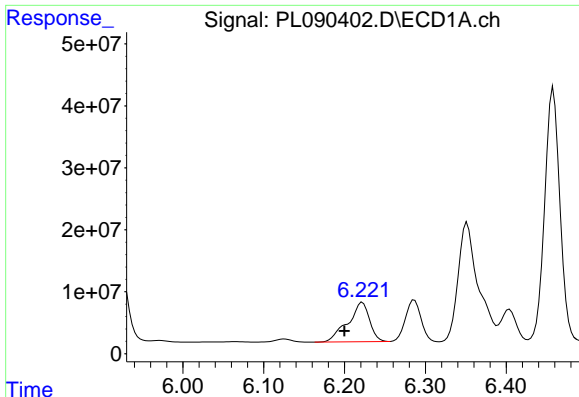
#11 alpha-Chlordane

R.T.: 6.032 min
 Delta R.T.: 0.005 min
 Response: 277197
 Conc: 0.11 ng/ml



#11 alpha-Chlordane

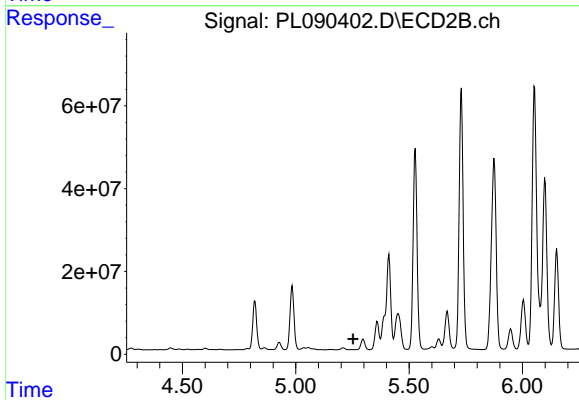
R.T.: 5.056 min
 Delta R.T.: -0.007 min
 Response: 6636977
 Conc: 3.47 ng/ml



#12 4,4'-DDE

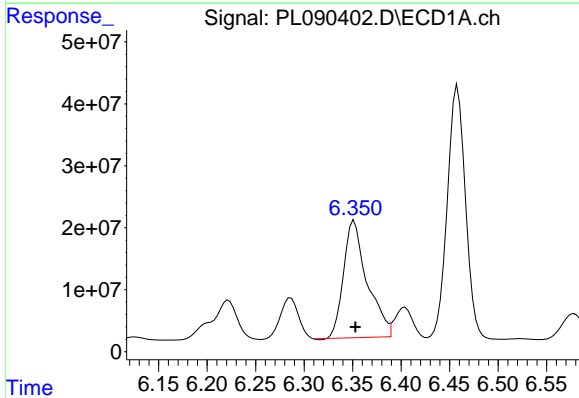
R.T.: 6.222 min
 Delta R.T.: 0.022 min
 Response: 117860731
 Conc: 53.99 ng/ml

Instrument :
 ECD_L
 ClientSampleId :



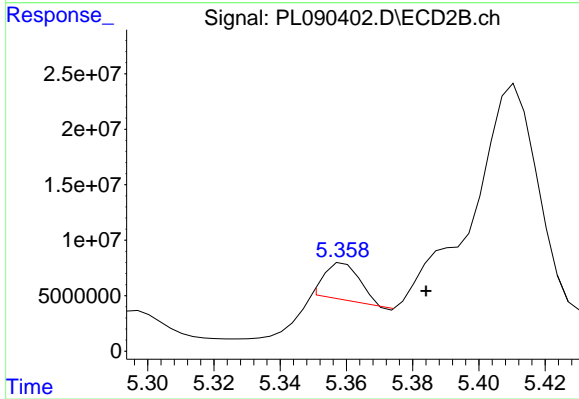
#12 4,4'-DDE

R.T.: 5.244 min
 Delta R.T.: -0.008 min
 Response: -1907173
 Conc: N.D.



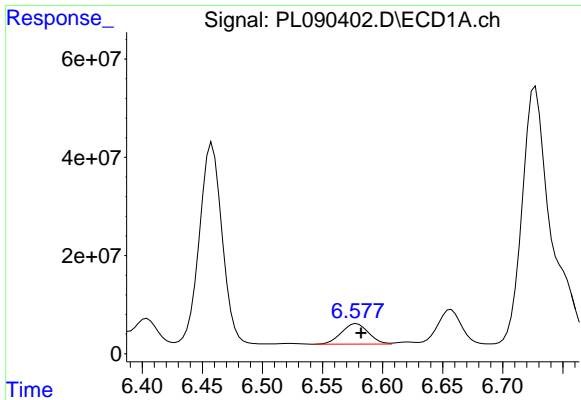
#13 Dieldrin

R.T.: 6.352 min
 Delta R.T.: -0.001 min
 Response: 319601812
 Conc: 130.72 ng/ml



#13 Dieldrin

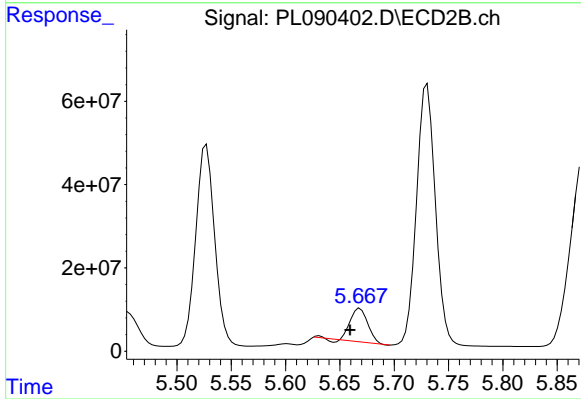
R.T.: 5.360 min
 Delta R.T.: -0.025 min
 Response: 24409340
 Conc: 13.23 ng/ml



#14 Endrin

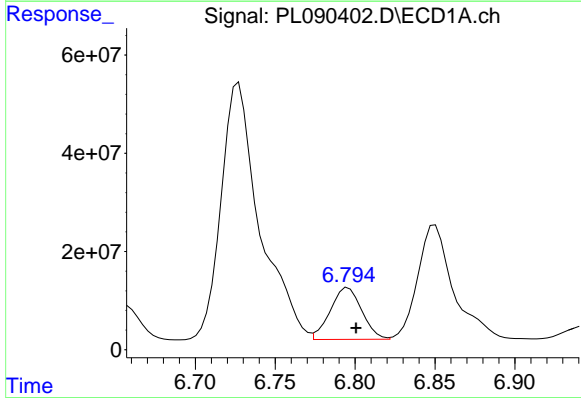
R.T.: 6.578 min
 Delta R.T.: -0.004 min
 Response: 65376463
 Conc: 30.83 ng/ml

Instrument :
 ECD_L
 ClientSampleId :



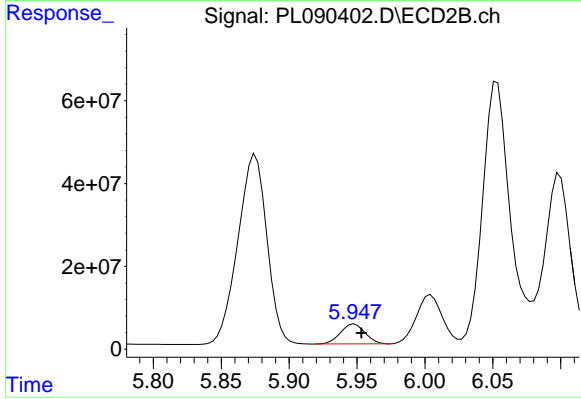
#14 Endrin

R.T.: 5.668 min
 Delta R.T.: 0.009 min
 Response: 89234326
 Conc: 53.96 ng/ml



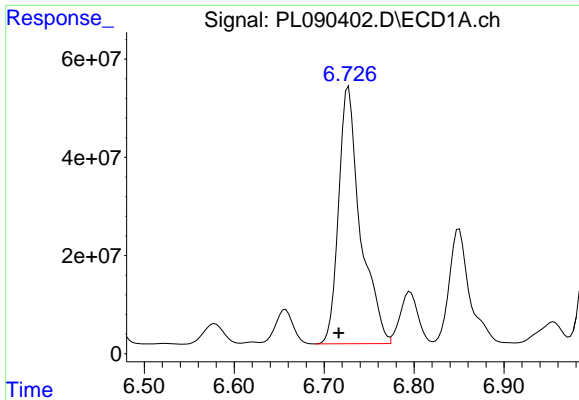
#15 Endosulfan II

R.T.: 6.796 min
 Delta R.T.: -0.005 min
 Response: 145151949
 Conc: 65.65 ng/ml



#15 Endosulfan II

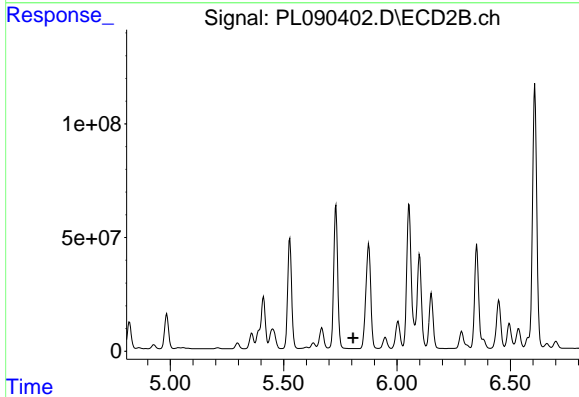
R.T.: 5.948 min
 Delta R.T.: -0.005 min
 Response: 60753275
 Conc: 37.03 ng/ml



#16 4,4'-DDD

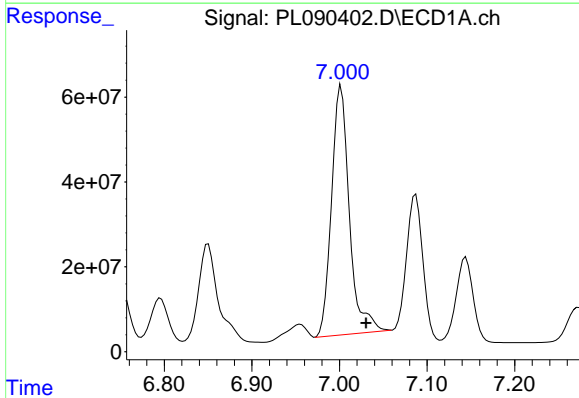
R.T.: 6.727 min
 Delta R.T.: 0.011 min
 Response: 880215747
 Conc: 480.45 ng/ml

Instrument :
 ECD_L
 ClientSampleId :



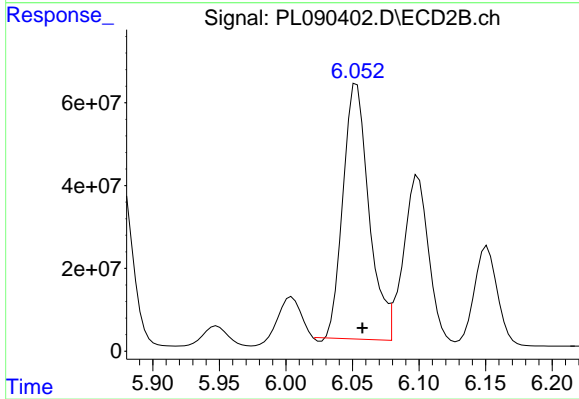
#16 4,4'-DDD

R.T.: 0.000 min
 Exp R.T. : 5.807 min
 Response: 0
 Conc: N.D.



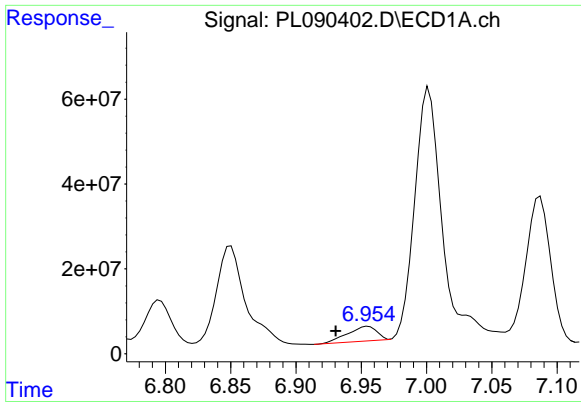
#17 4,4'-DDT

R.T.: 7.002 min
 Delta R.T.: -0.029 min
 Response: 832219787
 Conc: 433.69 ng/ml



#17 4,4'-DDT

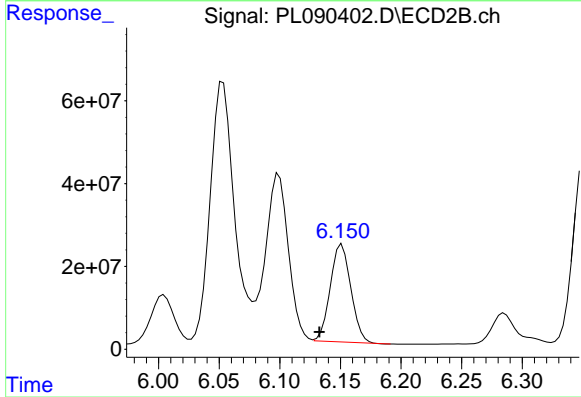
R.T.: 6.053 min
 Delta R.T.: -0.004 min
 Response: 832988287
 Conc: 562.78 ng/ml



#18 Endrin aldehyde

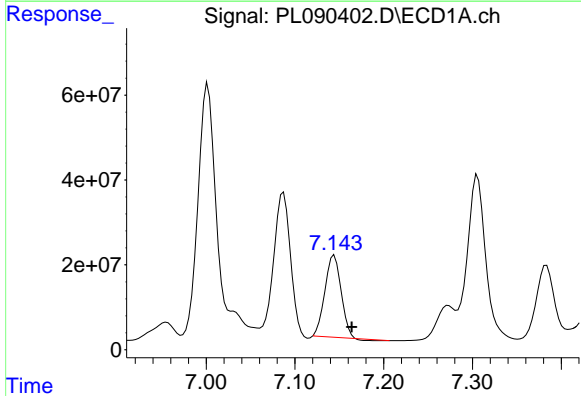
R.T.: 6.955 min
 Delta R.T.: 0.025 min
 Response: 53897413
 Conc: 31.92 ng/ml

Instrument :
 ECD_L
 ClientSampleId :



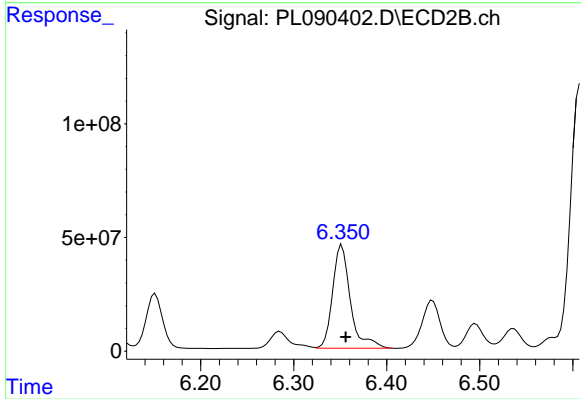
#18 Endrin aldehyde

R.T.: 6.151 min
 Delta R.T.: 0.019 min
 Response: 277364668
 Conc: 217.80 ng/ml



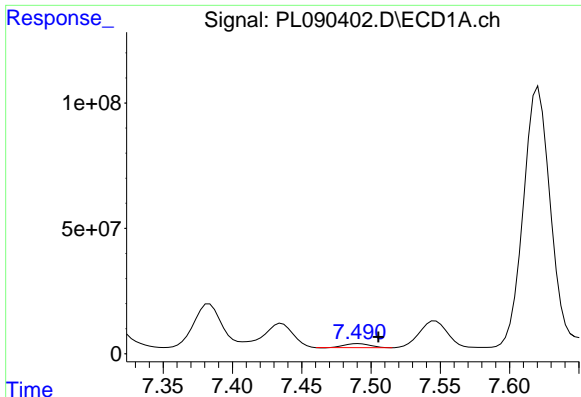
#19 Endosulfan Sulfate

R.T.: 7.144 min
 Delta R.T.: -0.020 min
 Response: 242085830
 Conc: 122.22 ng/ml



#19 Endosulfan Sulfate

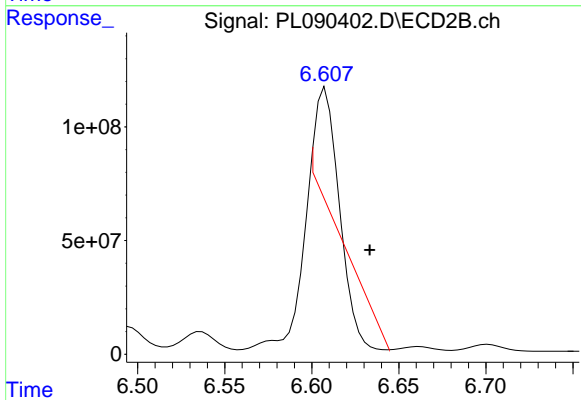
R.T.: 6.352 min
 Delta R.T.: -0.004 min
 Response: 604445527
 Conc: 386.54 ng/ml



#20 Methoxychlor

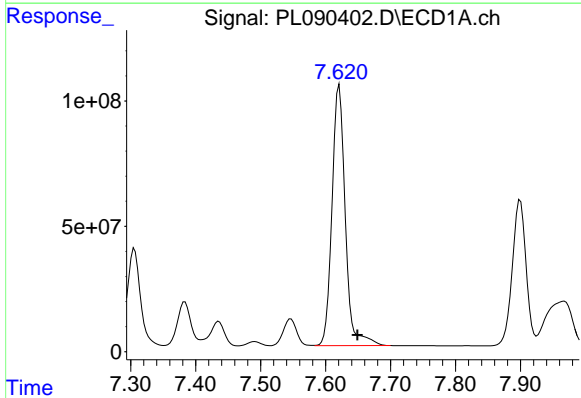
R.T.: 7.491 min
 Delta R.T.: -0.014 min
 Response: 20313333
 Conc: 19.71 ng/ml

Instrument :
 ECD_L
 ClientSampleId :



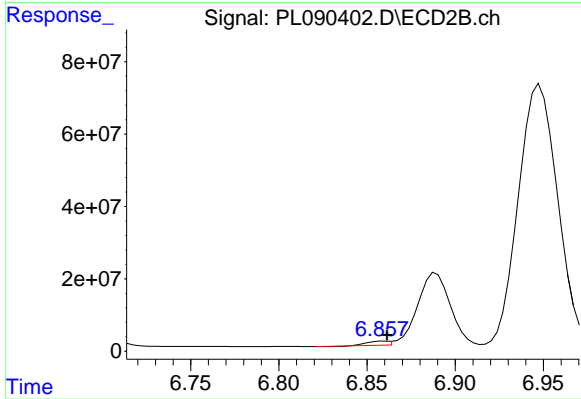
#20 Methoxychlor

R.T.: 6.608 min
 Delta R.T.: -0.025 min
 Response: 162510035
 Conc: 194.79 ng/ml



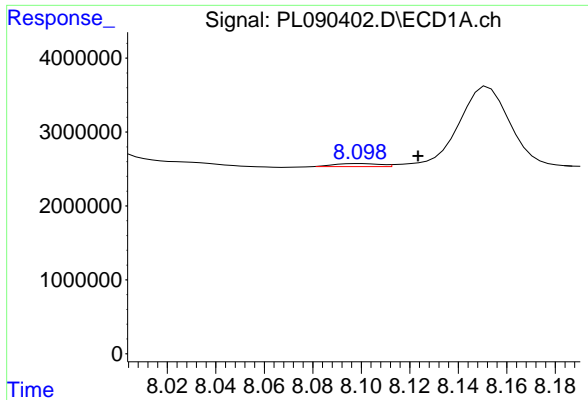
#21 Endrin ketone

R.T.: 7.621 min
 Delta R.T.: -0.028 min
 Response: 1471168597
 Conc: 678.24 ng/ml



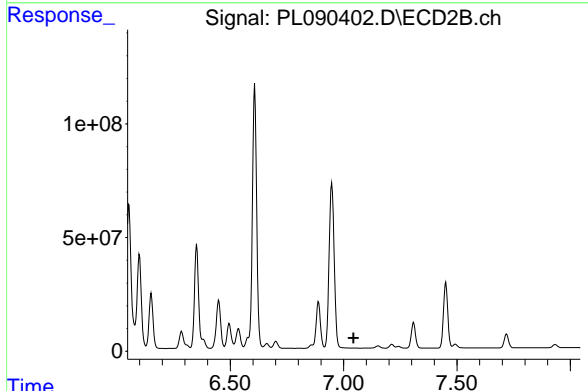
#21 Endrin ketone

R.T.: 6.860 min
 Delta R.T.: -0.001 min
 Response: 8482111
 Conc: 4.74 ng/ml

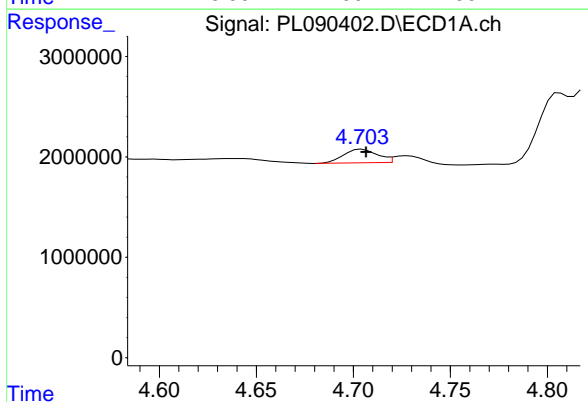


#22 Mirex
 R.T.: 8.100 min
 Delta R.T.: -0.024 min
 Response: 531429
 Conc: 0.31 ng/ml

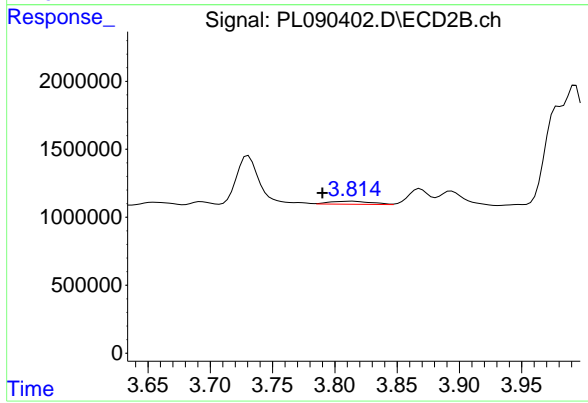
Instrument :
 ECD_L
 ClientSampleId :



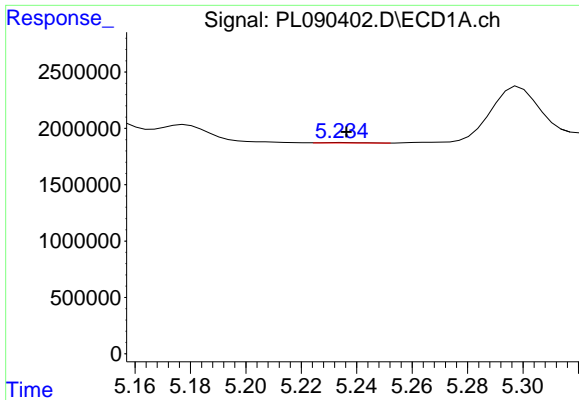
#22 Mirex
 R.T.: 0.000 min
 Exp R.T. : 7.044 min
 Response: 0
 Conc: N.D.



#23 Chlordane-1
 R.T.: 4.705 min
 Delta R.T.: -0.002 min
 Response: 1641542
 Conc: 16.71 ng/ml



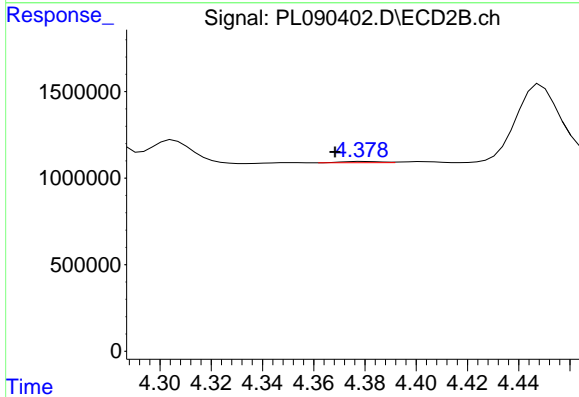
#23 Chlordane-1
 R.T.: 3.814 min
 Delta R.T.: 0.024 min
 Response: 494949
 Conc: 8.13 ng/ml



#24 Chlordane-2

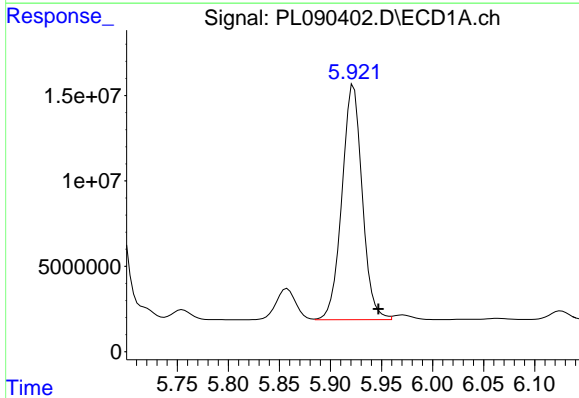
R.T.: 5.235 min
 Delta R.T.: -0.002 min
 Response: 29516
 Conc: 0.25 ng/ml

Instrument :
 ECD_L
 ClientSampleId :



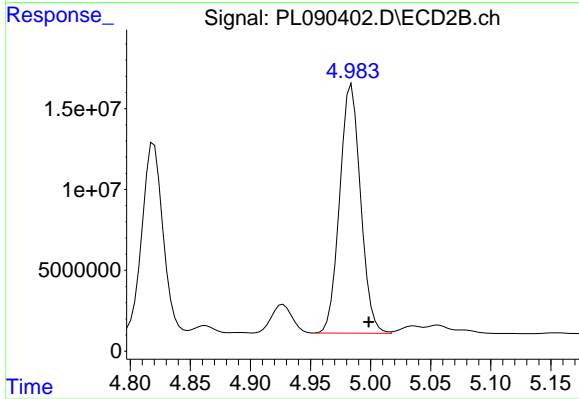
#24 Chlordane-2

R.T.: 4.379 min
 Delta R.T.: 0.011 min
 Response: 78488
 Conc: 1.11 ng/ml



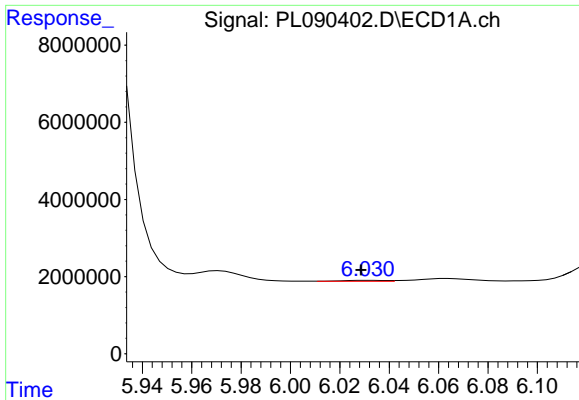
#25 Chlordane-3

R.T.: 5.923 min
 Delta R.T.: -0.024 min
 Response: 190347183
 Conc: 517.73 ng/ml



#25 Chlordane-3

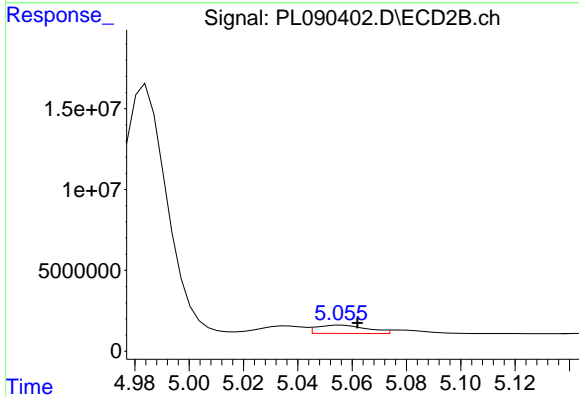
R.T.: 4.984 min
 Delta R.T.: -0.014 min
 Response: 186433847
 Conc: 923.35 ng/ml



#26 Chlordane-4

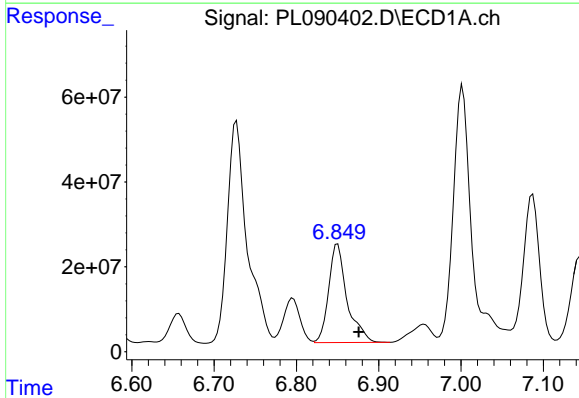
R.T.: 6.032 min
 Delta R.T.: 0.003 min
 Response: 277197
 Conc: 0.62 ng/ml

Instrument :
 ECD_L
 ClientSampleId :



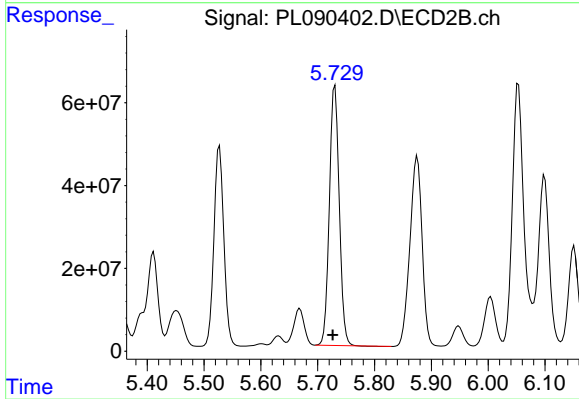
#26 Chlordane-4

R.T.: 5.056 min
 Delta R.T.: -0.006 min
 Response: 6636977
 Conc: 34.76 ng/ml



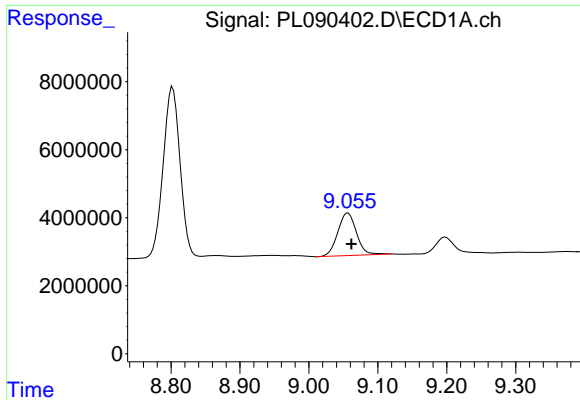
#27 Chlordane-5

R.T.: 6.850 min
 Delta R.T.: -0.026 min
 Response: 361341892
 Conc: 4011.78 ng/ml



#27 Chlordane-5

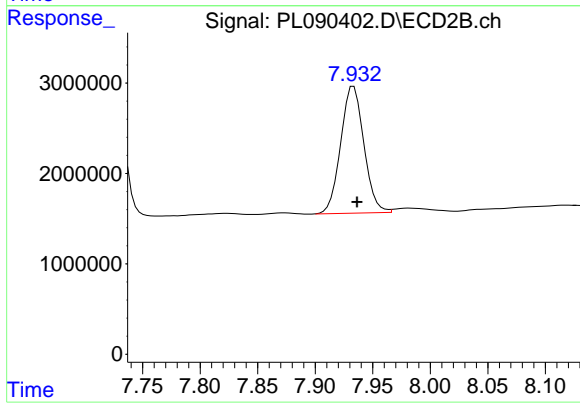
R.T.: 5.730 min
 Delta R.T.: 0.004 min
 Response: 757853356
 Conc: 12546.71 ng/ml



#28 Decachlorobiphenyl

R.T.: 9.057 min
Delta R.T.: -0.005 min
Response: 23737639
Conc: 15.39 ng/ml

Instrument :
ECD_L
ClientSampleId :



#28 Decachlorobiphenyl

R.T.: 7.933 min
Delta R.T.: -0.003 min
Response: 19779102
Conc: 13.26 ng/ml