

Data Path : Z:\pestpcbsrv\HPCHEM1\ECD_L\Data\PL063022\
 Data File : PL076149.D
 Signal(s) : Signal #1: ECD1A.ch Signal #2: ECD2B.ch
 Acq On : 30 Jun 2022 19:39
 Operator : AR\AJ
 Sample : PEM
 Misc :
 ALS Vial : 3 Sample Multiplier: 1

Instrument :
 ECD_L
 ClientSampleId :

Integration File signal 1: autoint1.e
 Integration File signal 2: autoint2.e
 Quant Time: Jul 01 00:23:10 2022
 Quant Method : Z:\pestpcbsrv\HPCHEM1\ECD_L\methods\PL062222.M
 Quant Title : GC Extractables
 QLast Update : Fri Jun 24 02:17:51 2022
 Response via : Initial Calibration
 Integrator: ChemStation

Volume Inj. : 1 µl
 Signal #1 Phase : ZB-MR2 Signal #2 Phase: ZB-MR1
 Signal #1 Info : 30M x 0.32mm x0.2 Signal #2 Info : 30M x 0.32mm x0.5µm

	Compound	RT#1	RT#2	Resp#1	Resp#2	ng/ml	ng/ml

System Monitoring Compounds							
1)	SA Tetrachlo...	5.641	4.631	15651633	39164903	20.694	20.650
28)	SA Decachlor...	11.632	10.369	13854948	32180842	22.018	20.953
Target Compounds							
2)	A alpha-BHC	6.225	5.332	10049595	24988971	10.174	10.224
3)	MA gamma-BHC...	6.623	5.752	9831440	23702203	10.620	10.253
6)	B beta-BHC	6.876	6.131	5209679	13106886	11.895	12.565
7)	B delta-BHC	0.000	6.395	0	399902	N.D.	0.177 #
8)	B Heptachlo...	8.121	0.000	460416	0	0.578	N.D. #
10)	B gamma-Chl...	0.000	7.346	0	281057	N.D.	0.146 #
11)	B alpha-Chl...	0.000	7.379f	0	308345	N.D.	0.161 #
13)	MA Dieldrin	0.000	7.737	0	177840	N.D.	0.099 #
14)	MA Endrin	9.058	8.033	32890445	79323272	52.751	52.197
15)	B Endosulfa...	9.299	8.367f	642302	340520	1.012	0.225 #
16)	A 4,4'-DDD	9.198	8.196	1209462	2698718	2.133	1.946
17)	MA 4,4'-DDT	9.517	8.456	69842648	164.0E6	114.409	110.868
18)	B Endrin al...	9.427	8.531	841656	2812028	1.629	2.356 #
20)	A Methoxychlor	10.002	9.049	94039896	211.7E6	274.161	248.542
21)	B Endrin ke...	10.167	9.277	3040029	6021145	4.218	3.644
24)	Chlordane-2	0.000	6.659f	0	859995	N.D.	12.368 #
25)	Chlordane-3	0.000	7.346	0	281057	N.D.	1.594 #
26)	Chlordane-4	0.000	7.379f	0	308345	N.D.	1.636 #

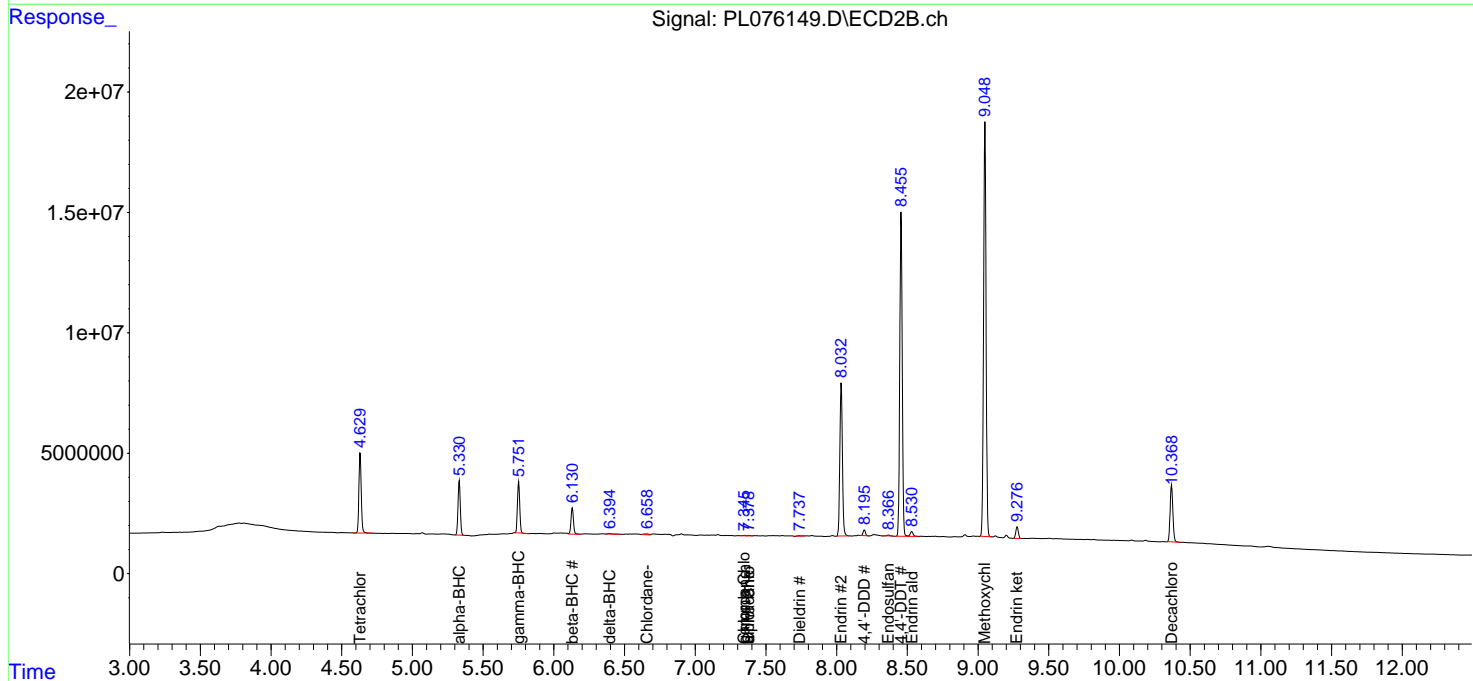
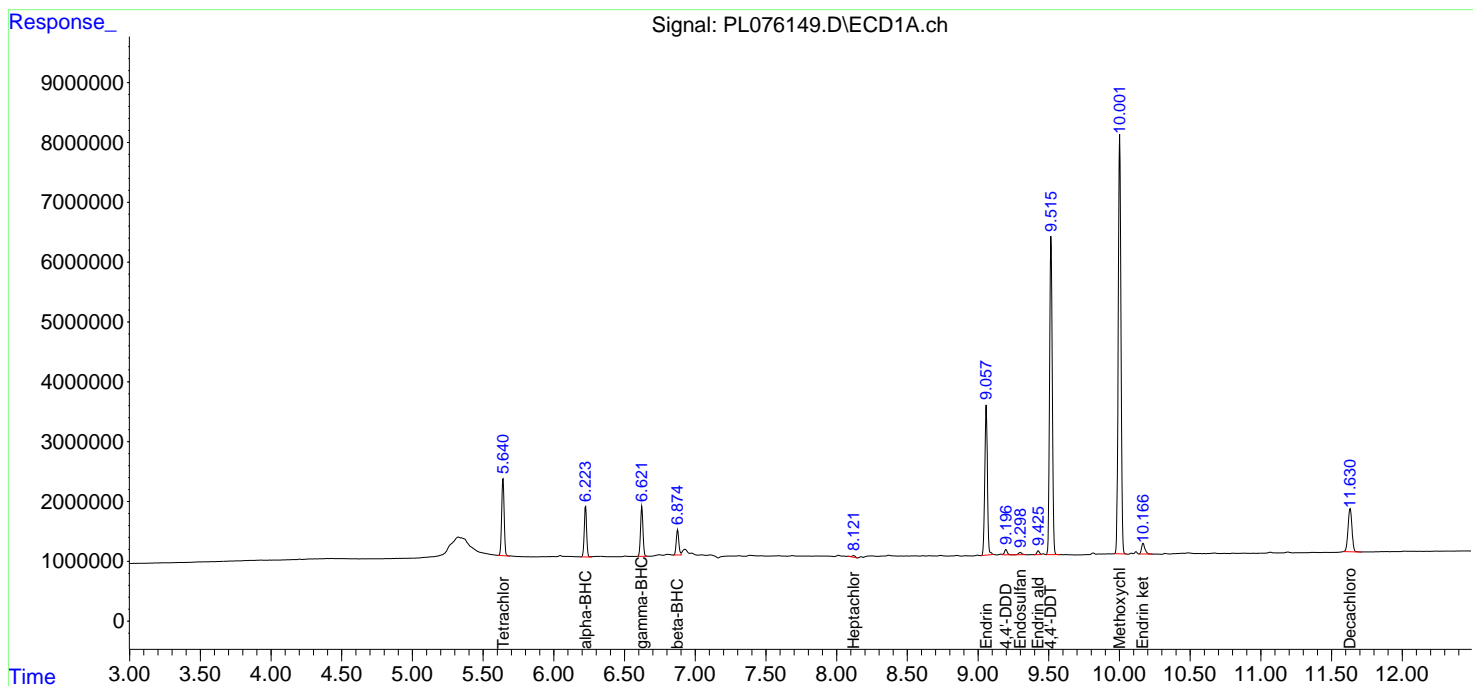
(f)=RT Delta > 1/2 Window (#)=Amounts differ by > 25% (m)=manual int.

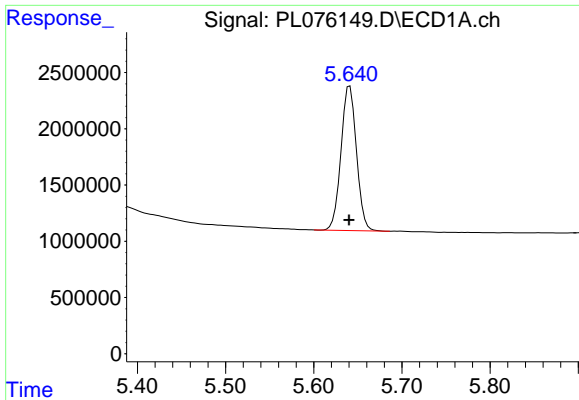
Data Path : Z:\pestpcbsrv\HPCHEM1\ECD_L\Data\PL063022\
 Data File : PL076149.D
 Signal(s) : Signal #1: ECD1A.ch Signal #2: ECD2B.ch
 Acq On : 30 Jun 2022 19:39
 Operator : AR\AJ
 Sample : PEM
 Misc :
 ALS Vial : 3 Sample Multiplier: 1

Instrument :
 ECD_L
 ClientSampleId :

Integration File signal 1: autoint1.e
 Integration File signal 2: autoint2.e
 Quant Time: Jul 01 00:23:10 2022
 Quant Method : Z:\pestpcbsrv\HPCHEM1\ECD_L\methods\PL062222.M
 Quant Title : GC Extractables
 QLast Update : Fri Jun 24 02:17:51 2022
 Response via : Initial Calibration
 Integrator: ChemStation

Volume Inj. : 1 µl
 Signal #1 Phase : ZB-MR2 Signal #2 Phase: ZB-MR1
 Signal #1 Info : 30M x 0.32mm x0.2 Signal #2 Info : 30M x 0.32mm x0.5µm

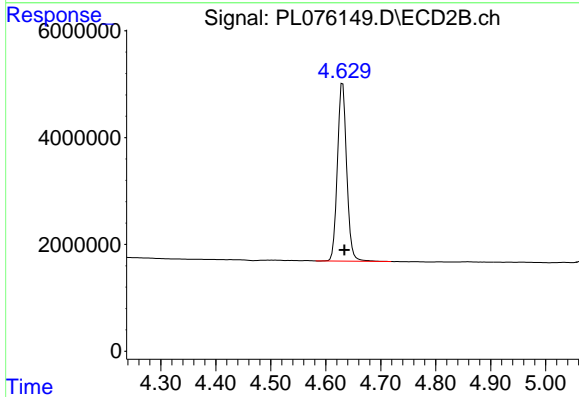




#1 Tetrachloro-m-xylene

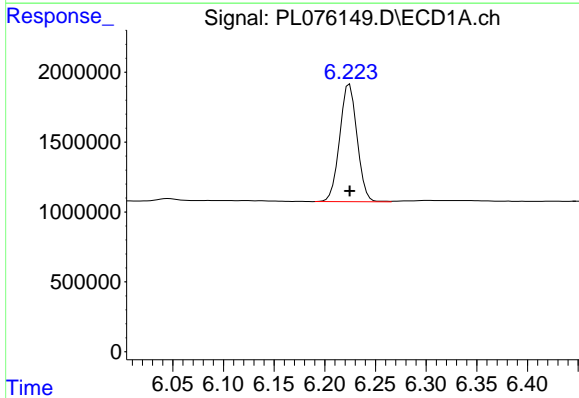
R.T.: 5.641 min
 Delta R.T.: 0.000 min
 Response: 15651633
 Conc: 20.69 ng/ml

Instrument :
 ECD_L
 ClientSampleId :



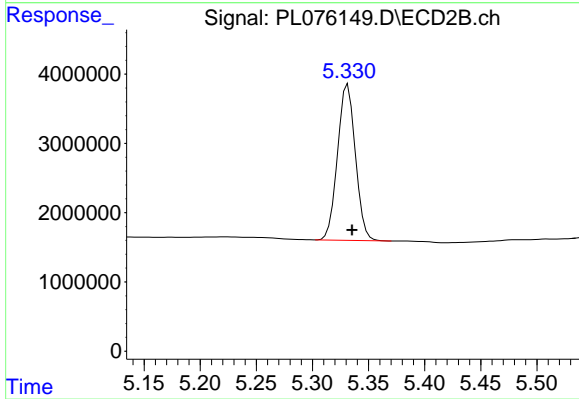
#1 Tetrachloro-m-xylene

R.T.: 4.631 min
 Delta R.T.: -0.003 min
 Response: 39164903
 Conc: 20.65 ng/ml



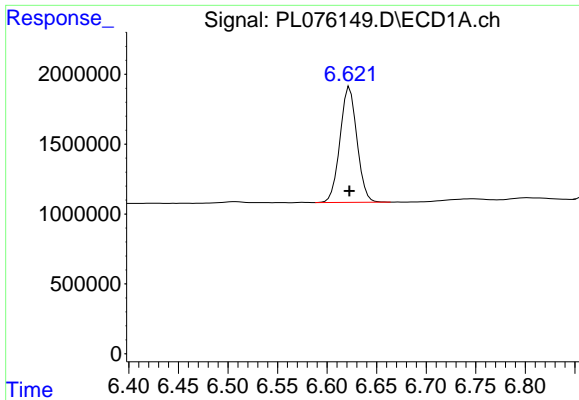
#2 alpha-BHC

R.T.: 6.225 min
 Delta R.T.: 0.000 min
 Response: 10049595
 Conc: 10.17 ng/ml



#2 alpha-BHC

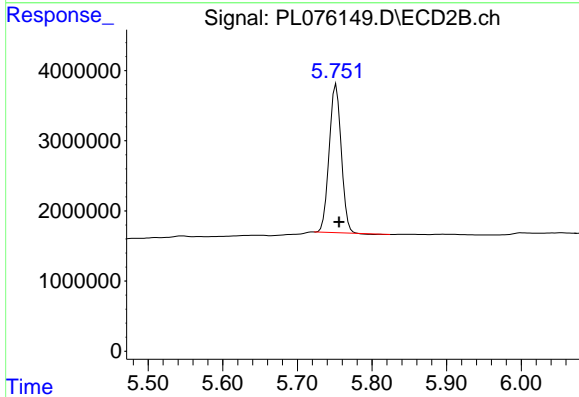
R.T.: 5.332 min
 Delta R.T.: -0.004 min
 Response: 24988971
 Conc: 10.22 ng/ml



#3 gamma-BHC (Lindane)

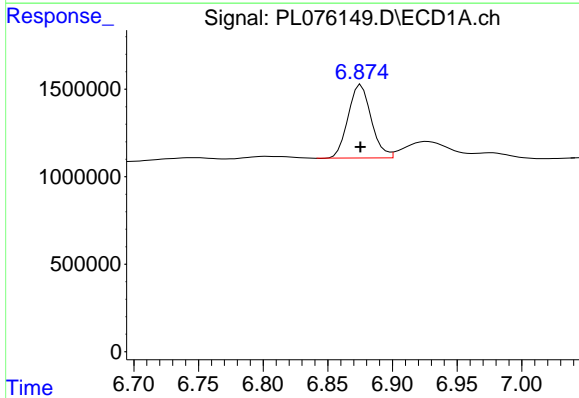
R.T.: 6.623 min
 Delta R.T.: 0.000 min
 Response: 9831440
 Conc: 10.62 ng/ml

Instrument :
 ECD_L
 ClientSampleId :



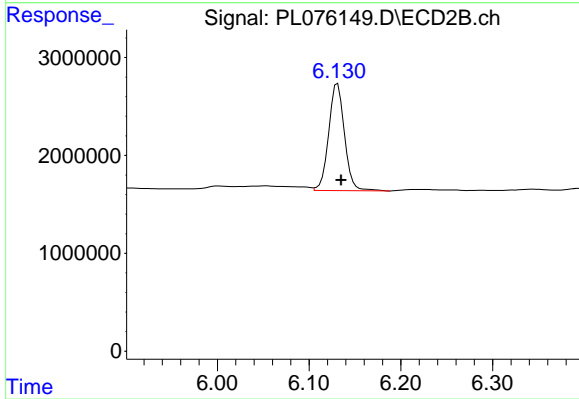
#3 gamma-BHC (Lindane)

R.T.: 5.752 min
 Delta R.T.: -0.004 min
 Response: 23702203
 Conc: 10.25 ng/ml



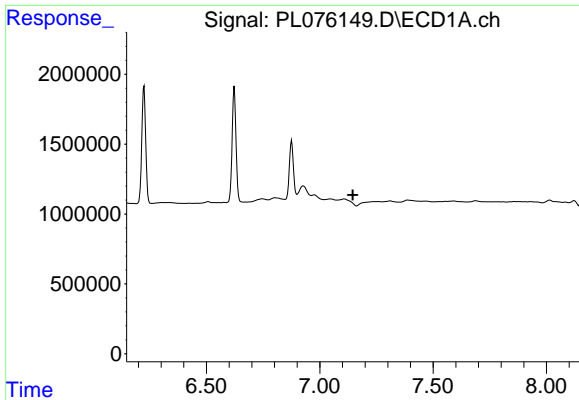
#6 beta-BHC

R.T.: 6.876 min
 Delta R.T.: 0.000 min
 Response: 5209679
 Conc: 11.90 ng/ml



#6 beta-BHC

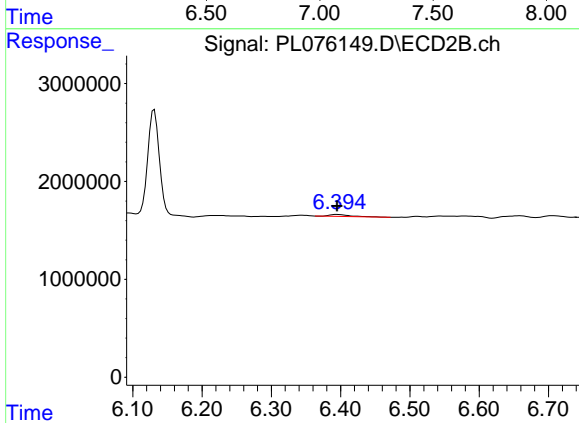
R.T.: 6.131 min
 Delta R.T.: -0.004 min
 Response: 13106886
 Conc: 12.57 ng/ml



#7 delta-BHC

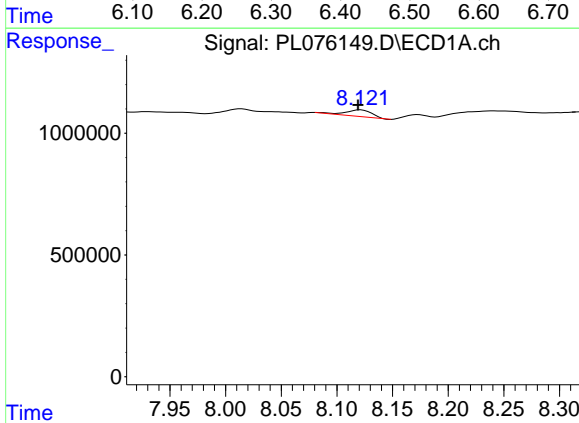
R.T.: 0.000 min
 Exp R.T.: 7.145 min
 Response: 0
 Conc: N.D.

Instrument :
 ECD_L
 ClientSampleId :



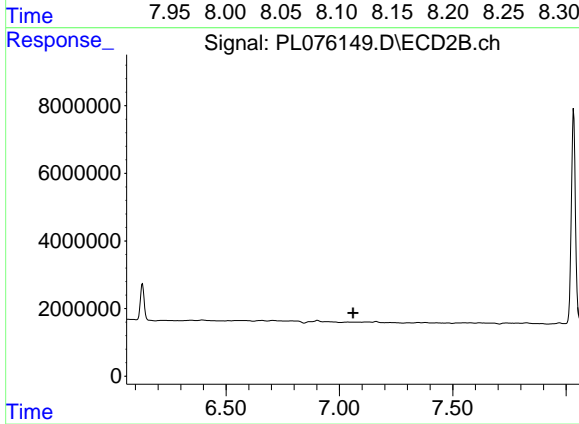
#7 delta-BHC

R.T.: 6.395 min
 Delta R.T.: 0.000 min
 Response: 399902
 Conc: 0.18 ng/ml



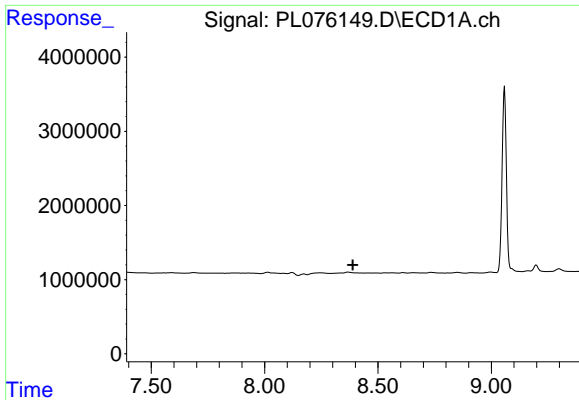
#8 Heptachlor epoxide

R.T.: 8.121 min
 Delta R.T.: 0.002 min
 Response: 460416
 Conc: 0.58 ng/ml



#8 Heptachlor epoxide

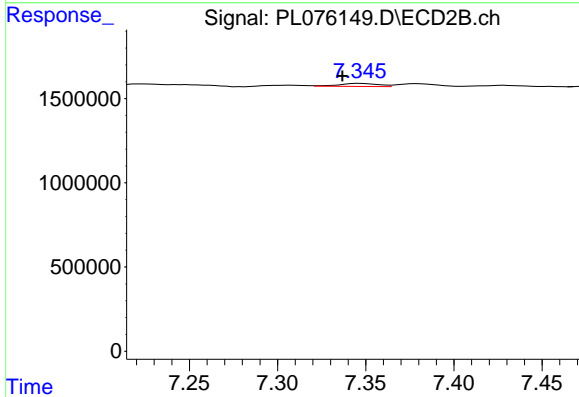
R.T.: 0.000 min
 Exp R.T.: 7.061 min
 Response: 0
 Conc: N.D.



#10 gamma-Chlordane

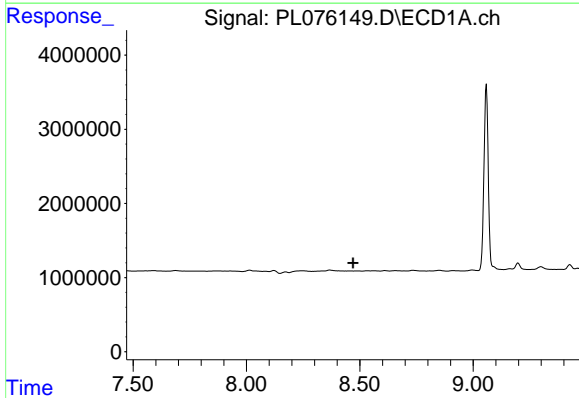
R.T.: 0.000 min
 Exp R.T.: 8.389 min
 Response: 0
 Conc: N.D.

Instrument :
 ECD_L
 ClientSampleId :



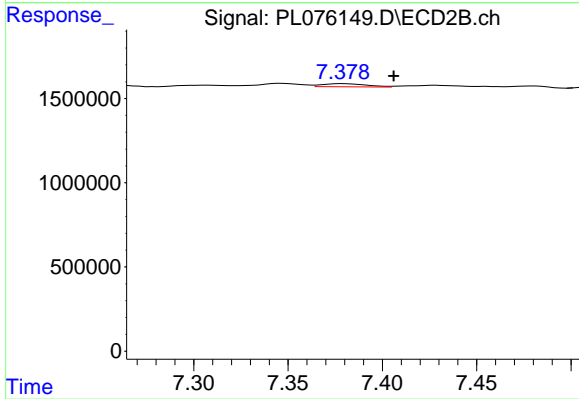
#10 gamma-Chlordane

R.T.: 7.346 min
 Delta R.T.: 0.010 min
 Response: 281057
 Conc: 0.15 ng/ml



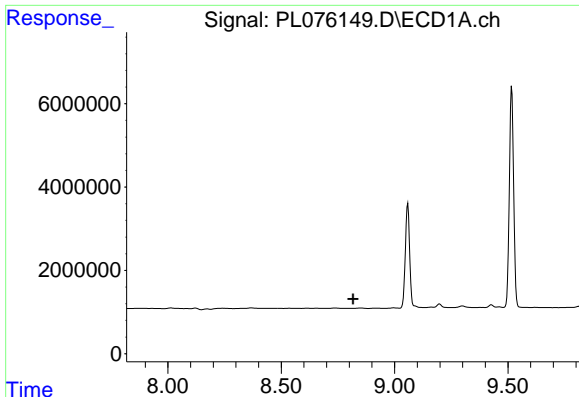
#11 alpha-Chlordane

R.T.: 0.000 min
 Exp R.T.: 8.470 min
 Response: 0
 Conc: N.D.



#11 alpha-Chlordane

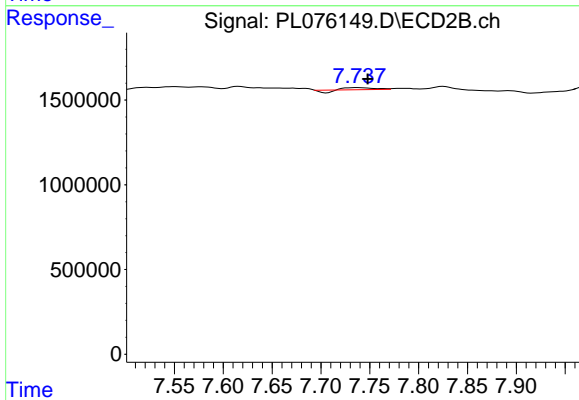
R.T.: 7.379 min
 Delta R.T.: -0.027 min
 Response: 308345
 Conc: 0.16 ng/ml



#13 Dieldrin

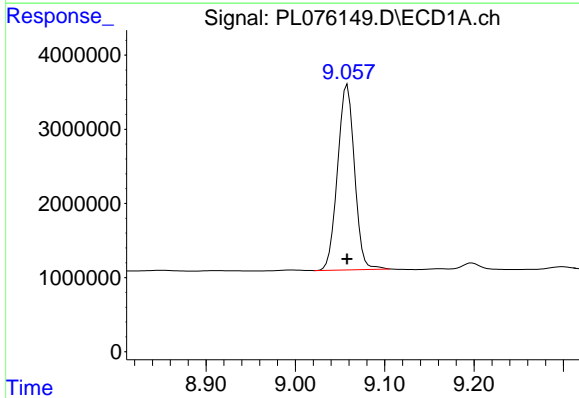
R.T.: 0.000 min
 Exp R.T.: 8.817 min
 Response: 0
 Conc: N.D.

Instrument :
 ECD_L
 ClientSampleId :



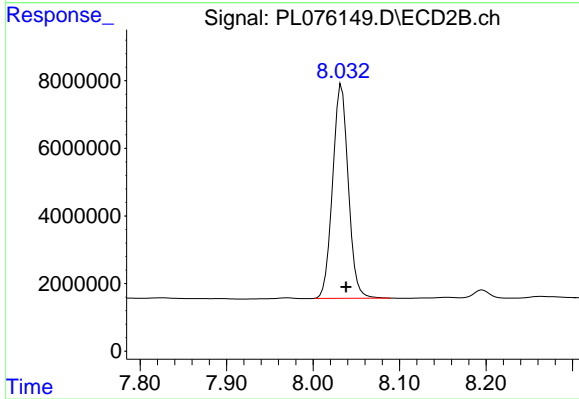
#13 Dieldrin

R.T.: 7.737 min
 Delta R.T.: -0.010 min
 Response: 177840
 Conc: 0.10 ng/ml



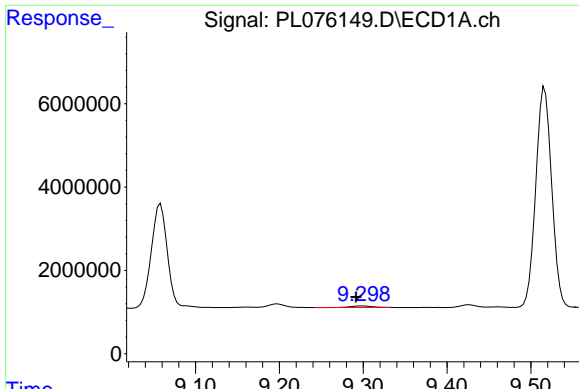
#14 Endrin

R.T.: 9.058 min
 Delta R.T.: 0.000 min
 Response: 32890445
 Conc: 52.75 ng/ml



#14 Endrin

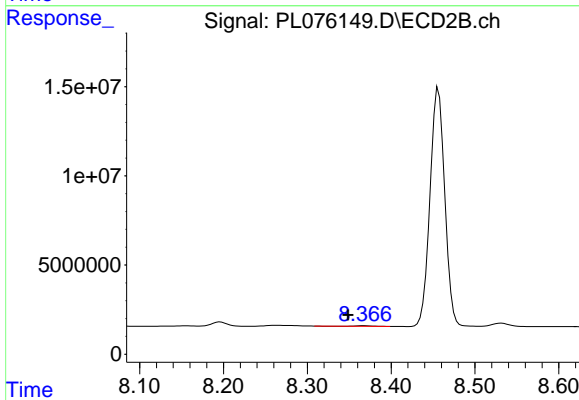
R.T.: 8.033 min
 Delta R.T.: -0.005 min
 Response: 79323272
 Conc: 52.20 ng/ml



#15 Endosulfan II

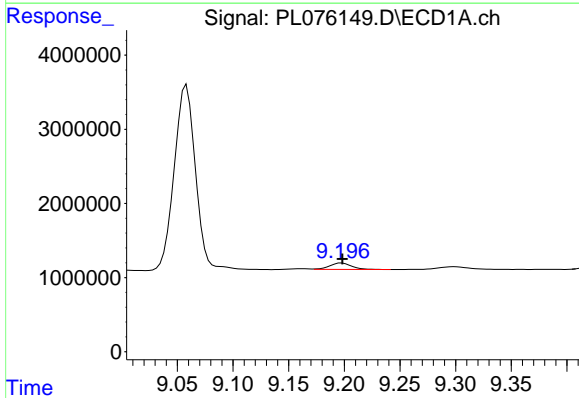
R.T.: 9.299 min
 Delta R.T.: 0.007 min
 Response: 642302
 Conc: 1.01 ng/ml

Instrument :
 ECD_L
 ClientSampleId :



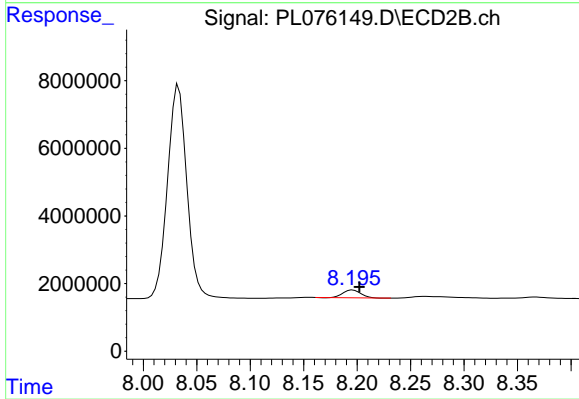
#15 Endosulfan II

R.T.: 8.367 min
 Delta R.T.: 0.018 min
 Response: 340520
 Conc: 0.23 ng/ml



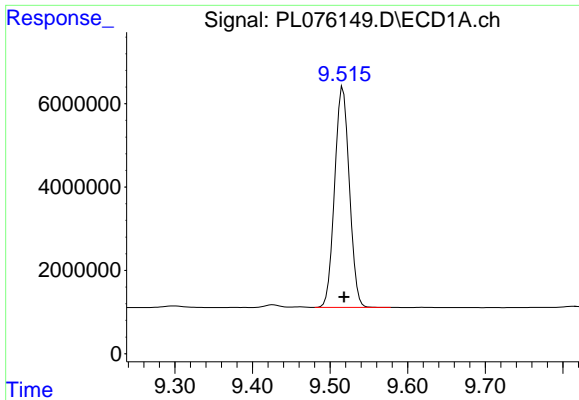
#16 4,4'-DDD

R.T.: 9.198 min
 Delta R.T.: 0.000 min
 Response: 1209462
 Conc: 2.13 ng/ml



#16 4,4'-DDD

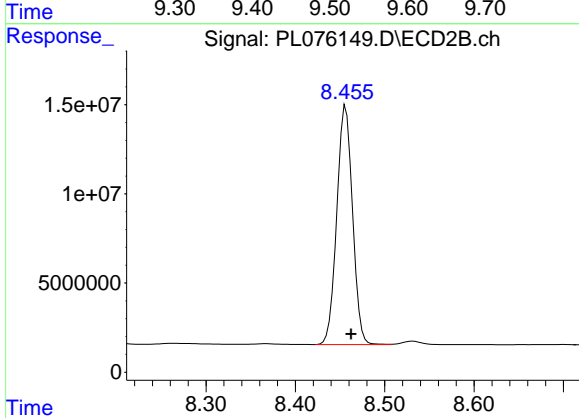
R.T.: 8.196 min
 Delta R.T.: -0.006 min
 Response: 2698718
 Conc: 1.95 ng/ml



#17 4,4'-DDT

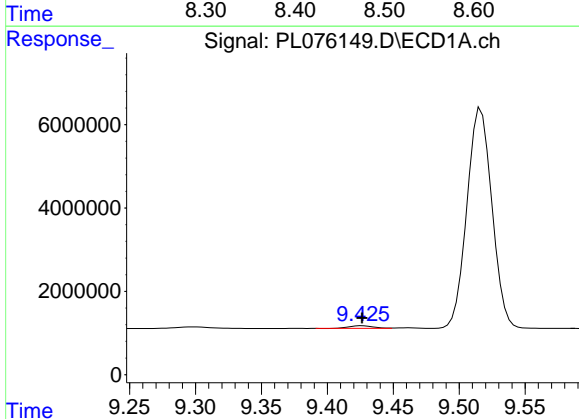
R.T.: 9.517 min
 Delta R.T.: -0.001 min
 Response: 69842648
 Conc: 114.41 ng/ml

Instrument :
 ECD_L
 ClientSampleId :



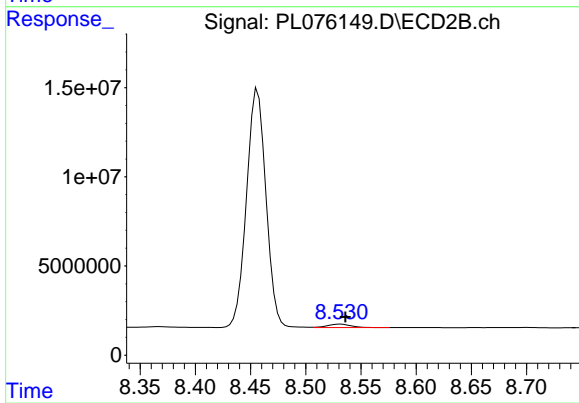
#17 4,4'-DDT

R.T.: 8.456 min
 Delta R.T.: -0.006 min
 Response: 163974976
 Conc: 110.87 ng/ml



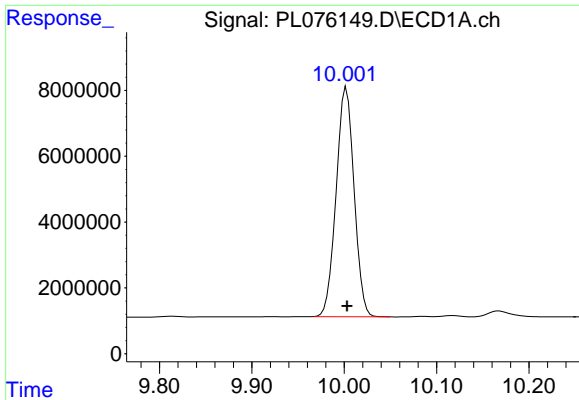
#18 Endrin aldehyde

R.T.: 9.427 min
 Delta R.T.: 0.000 min
 Response: 841656
 Conc: 1.63 ng/ml



#18 Endrin aldehyde

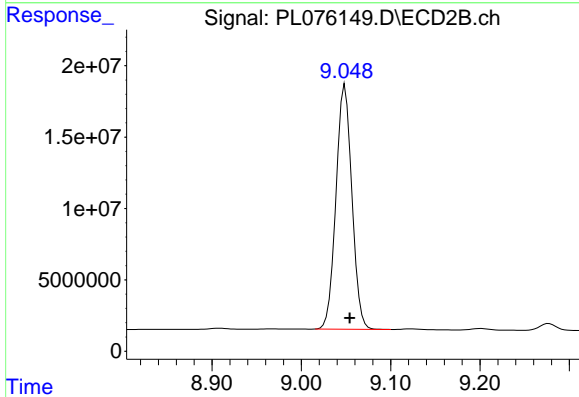
R.T.: 8.531 min
 Delta R.T.: -0.005 min
 Response: 2812028
 Conc: 2.36 ng/ml



#20 Methoxychlor

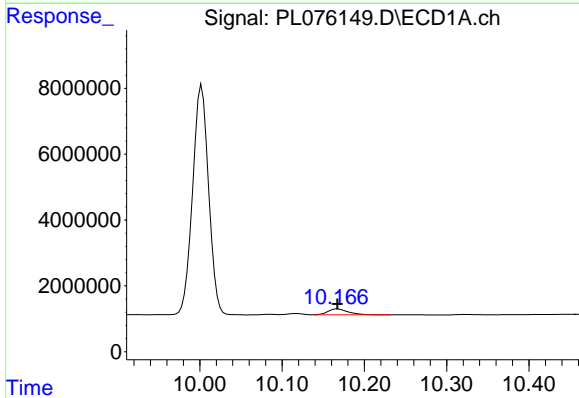
R.T.: 10.002 min
 Delta R.T.: 0.000 min
 Response: 94039896
 Conc: 274.16 ng/ml

Instrument :
 ECD_L
 ClientSampleId :



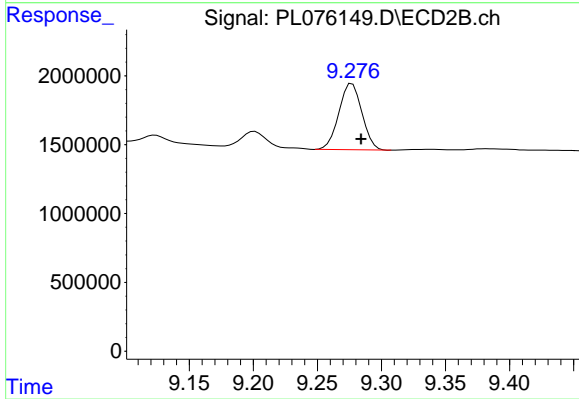
#20 Methoxychlor

R.T.: 9.049 min
 Delta R.T.: -0.005 min
 Response: 211653238
 Conc: 248.54 ng/ml



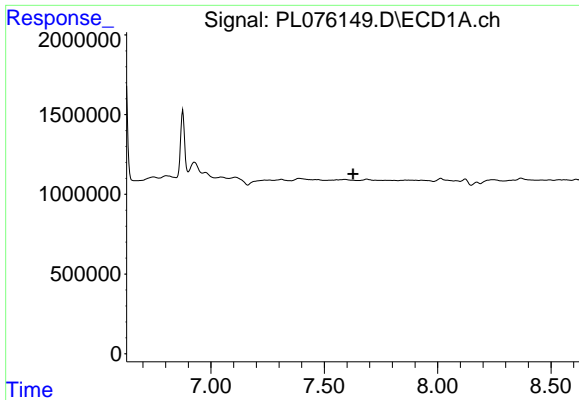
#21 Endrin ketone

R.T.: 10.167 min
 Delta R.T.: 0.000 min
 Response: 3040029
 Conc: 4.22 ng/ml



#21 Endrin ketone

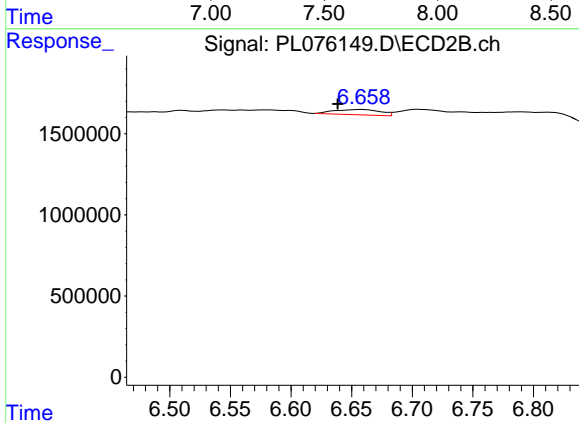
R.T.: 9.277 min
 Delta R.T.: -0.007 min
 Response: 6021145
 Conc: 3.64 ng/ml



#24 Chlordane-2

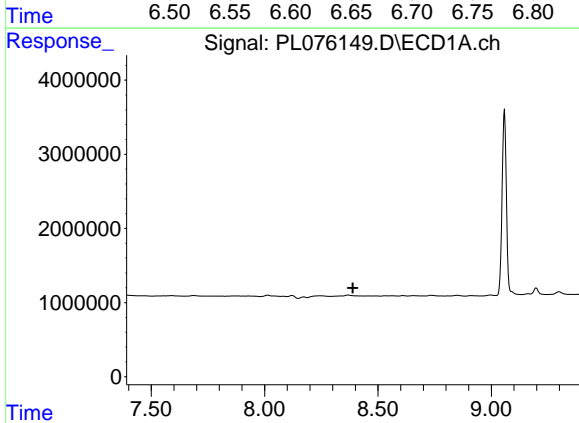
R.T.: 0.000 min
 Exp R.T.: 7.627 min
 Response: 0
 Conc: N.D.

Instrument :
 ECD_L
 ClientSampleId :



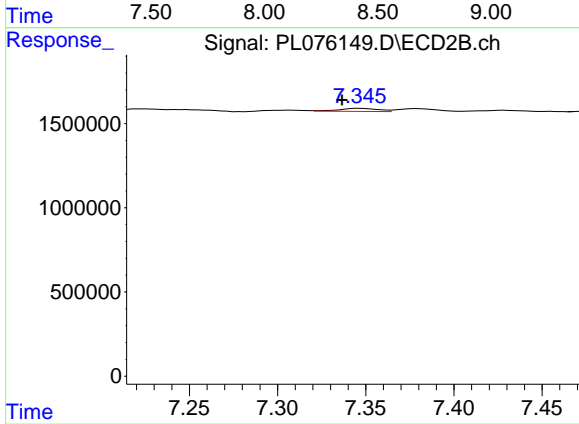
#24 Chlordane-2

R.T.: 6.659 min
 Delta R.T.: 0.020 min
 Response: 859995
 Conc: 12.37 ng/ml



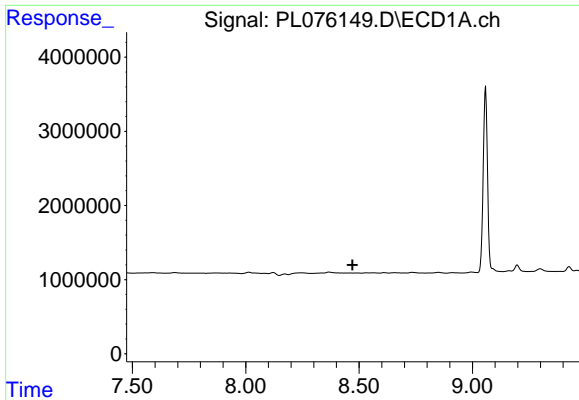
#25 Chlordane-3

R.T.: 0.000 min
 Exp R.T.: 8.389 min
 Response: 0
 Conc: N.D.



#25 Chlordane-3

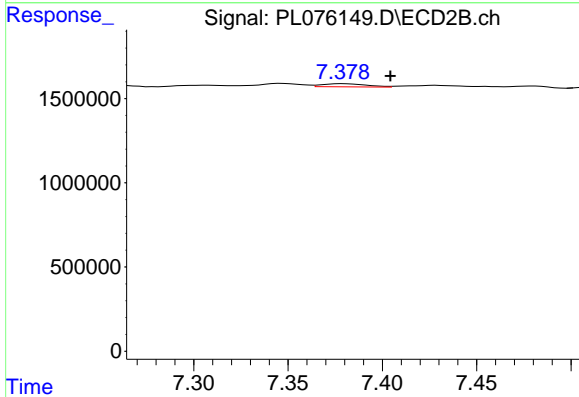
R.T.: 7.346 min
 Delta R.T.: 0.010 min
 Response: 281057
 Conc: 1.59 ng/ml



#26 Chlordane-4

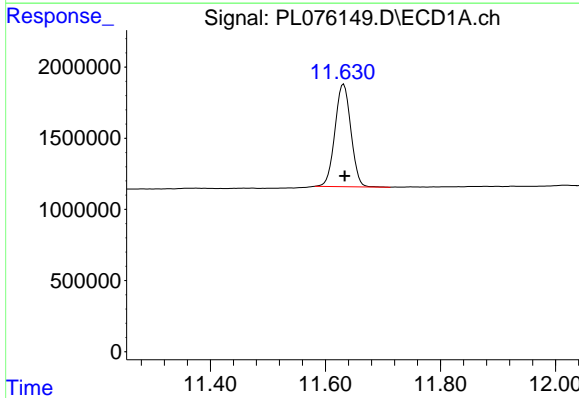
R.T.: 0.000 min
 Exp R.T.: 8.472 min
 Response: 0
 Conc: N.D.

Instrument :
 ECD_L
 ClientSampleId :



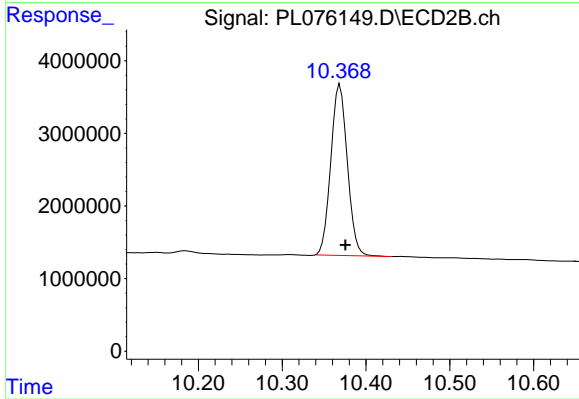
#26 Chlordane-4

R.T.: 7.379 min
 Delta R.T.: -0.025 min
 Response: 308345
 Conc: 1.64 ng/ml



#28 Decachlorobiphenyl

R.T.: 11.632 min
 Delta R.T.: -0.002 min
 Response: 13854948
 Conc: 22.02 ng/ml



#28 Decachlorobiphenyl

R.T.: 10.369 min
 Delta R.T.: -0.007 min
 Response: 32180842
 Conc: 20.95 ng/ml