

Data Path : Z:\pestpcbsrv\HPCHEM1\ECD_L\Data\PL070221\
 Data File : PL067941.D
 Signal(s) : Signal #1: ECD1A.ch Signal #2: ECD2B.ch
 Acq On : 02 Jul 2021 16:42
 Operator : AR\AJ
 Sample : M2908-01MS
 Misc :
 ALS Vial : 21 Sample Multiplier: 1

Instrument :
 ECD_L
 ClientSampleId :
 WC-CROPSEY-SOLIDSMS

Integration File signal 1: autoint1.e
 Integration File signal 2: autoint2.e
 Quant Time: Jul 03 02:15:01 2021
 Quant Method : Z:\pestpcbsrv\HPCHEM1\ECD_L\methods\PL061021.M
 Quant Title : GC Extractables
 QLast Update : Fri Jun 11 02:00:12 2021
 Response via : Initial Calibration
 Integrator: ChemStation

Volume Inj. : 1 µl
 Signal #1 Phase : ZB-MR2 Signal #2 Phase: ZB-MR1
 Signal #1 Info : 30M x 0.32mm x0.2 Signal #2 Info : 30M x 0.32mm x0.5µm

Compound	RT#1	RT#2	Resp#1	Resp#2	ng/ml	ng/ml

System Monitoring Compounds						
1) SA Tetrachlo...	4.476	5.528	11446988	31869365	20.821	33.805 #
28) SA Decachlor...	10.219	11.425	15598021	23059556	22.010	23.151
Target Compounds						
2) A alpha-BHC	5.175	6.108	47802635	83852875	64.993	67.816
3) MA gamma-BHC...	5.596	6.504	45450793	71814623	60.648	60.913
4) MA Heptachlor	6.007	7.151	44922693	73729168	59.555	66.111
5) MB Aldrin	6.328	7.520	42831157	66523356	58.211	61.462
6) B beta-BHC	5.979	6.759	20666222	36260058	57.758	66.776
7) B delta-BHC	6.236	7.025	46578944	80976276	63.066	68.886
8) B Heptachlo...	6.901	7.987	41015085	63072832	58.621	62.961
9) A Endosulfan I	7.301	8.392	39021659	57244636	58.045	62.690
10) B gamma-Chl...	7.180	8.257	42368364	61598114	58.439	61.009
11) B alpha-Chl...	7.249	8.337	42057223	61336612	57.446	60.752
12) B 4,4'-DDE	7.467	8.526	39406025	57650287	59.229	63.637
13) MA Dieldrin	7.585	8.682	42147532	59256070	60.125	65.244
14) MA Endrin	7.873	8.920	40208930	50627125	61.326	66.188
15) B Endosulfa...	8.183	9.155	37685717	51960948	61.191	65.171
16) A 4,4'-DDD	8.049	9.066	33933175	45539729	58.377	64.032
17) MA 4,4'-DDT	8.308	9.383	34426220	44672920	59.164	60.933
18) B Endrin al...	8.371	9.289	32570098	44429726	64.333	69.571
19) B Endosulfa...	8.602	9.527	38591505	51492854	60.793	64.838
20) A Methoxychlor	8.901	9.870	20440613	24879663	57.503	63.990
21) B Endrin ke...	9.111	10.024	45109631	57251614	59.249	63.166
22) Mirex	9.299	10.489	35149338	45429259	55.812	60.092
24) Chlordane-2	6.469f	7.520f	2391314	66523356	89.301	1825.249 #
25) Chlordane-3	7.180	8.257	42368364	61598114	630.570	460.244 #
26) Chlordane-4	7.249	8.337	42057223	61336612	575.506	378.386 #
27) Chlordane-5	8.183	0.000	37685717	0	1722.455	N.D. #

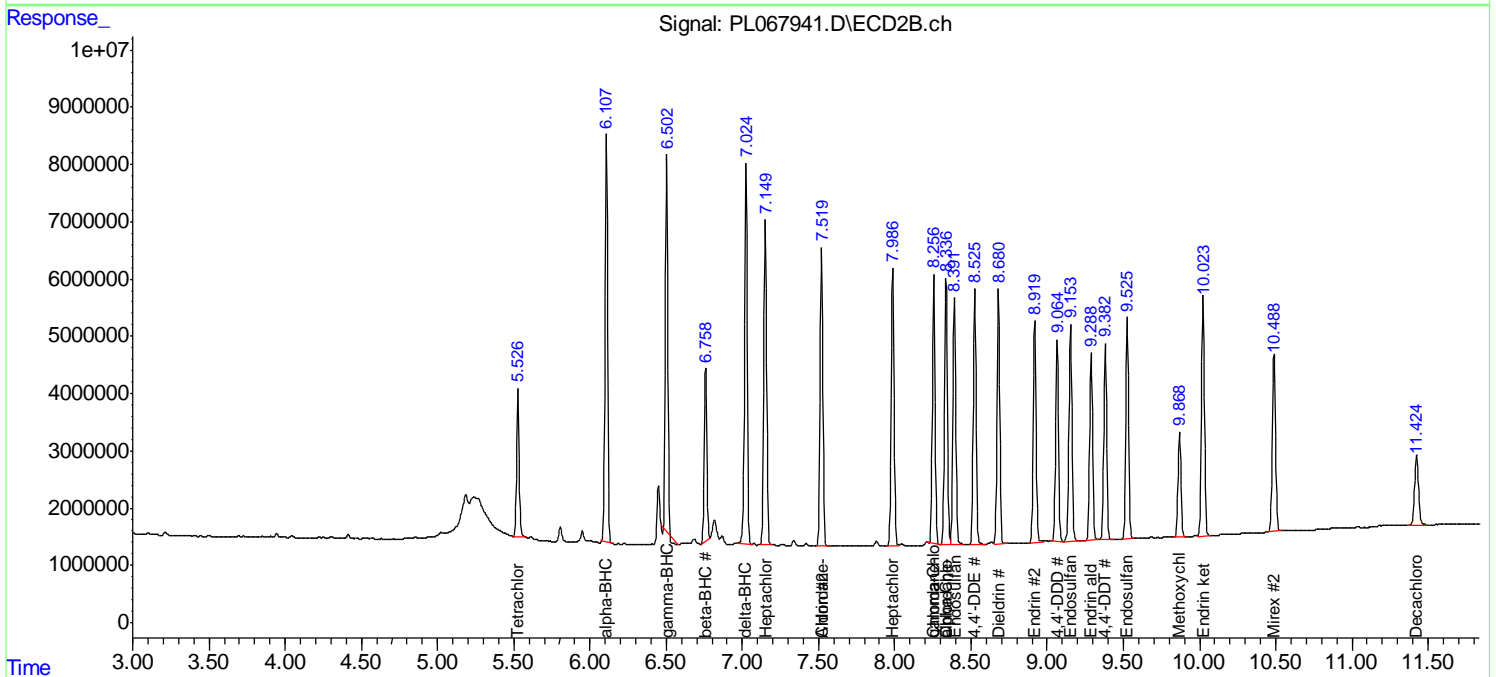
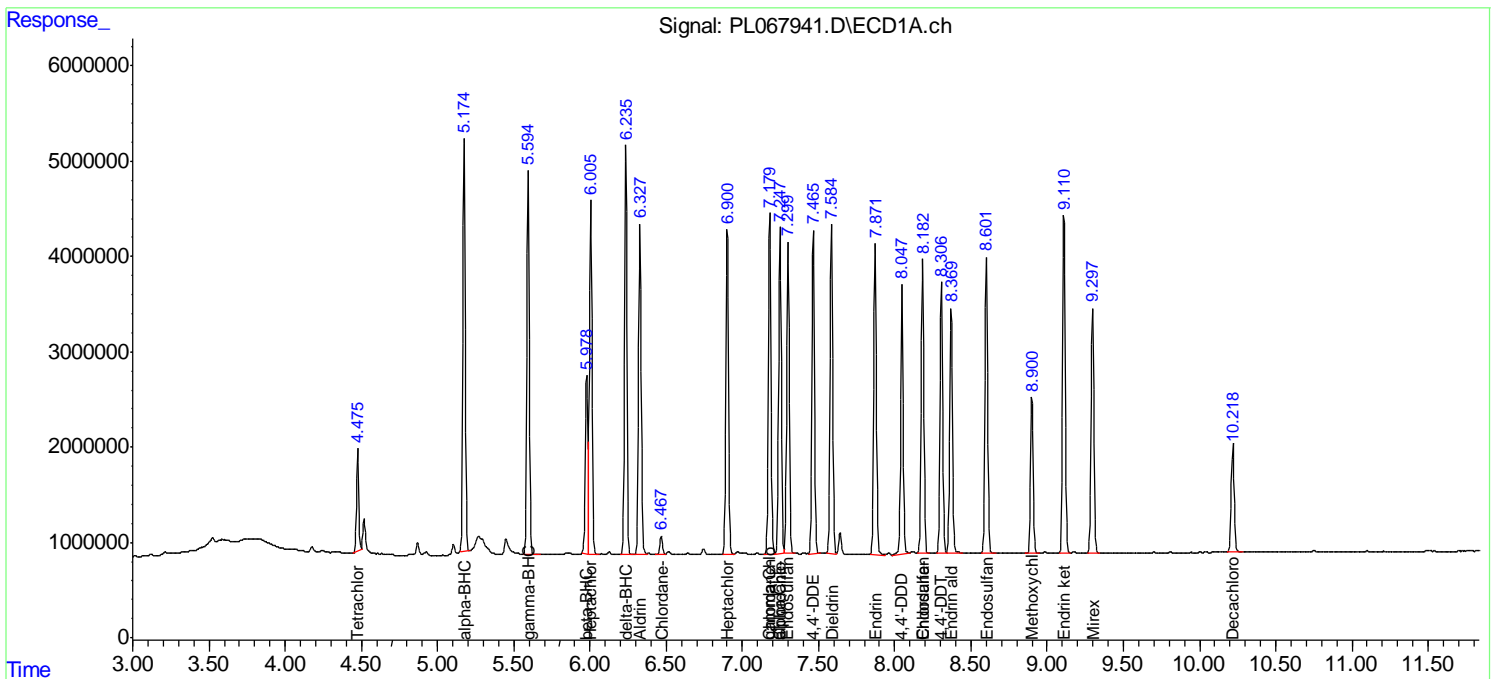
(f)=RT Delta > 1/2 Window (#)=Amounts differ by > 25% (m)=manual int.

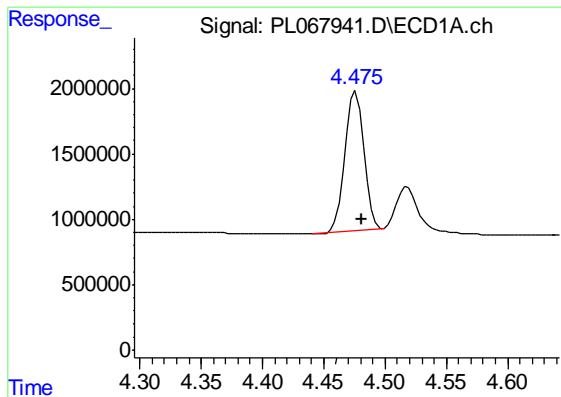
Data Path : Z:\pestpcbsrv\HPCHEM1\ECD_L\Data\PL070221\
 Data File : PL067941.D
 Signal(s) : Signal #1: ECD1A.ch Signal #2: ECD2B.ch
 Acq On : 02 Jul 2021 16:42
 Operator : AR\AJ
 Sample : M2908-01MS
 Misc :
 ALS Vial : 21 Sample Multiplier: 1

Instrument :
 ECD_L
 Client Sampled :
 WC-CROPSEY-SOLIDSMS

Integration File signal 1: autoint1.e
 Integration File signal 2: autoint2.e
 Quant Time: Jul 03 02:15:01 2021
 Quant Method : Z:\pestpcbsrv\HPCHEM1\ECD_L\methods\PL061021.M
 Quant Title : GC Extractables
 QLast Update : Fri Jun 11 02:00:12 2021
 Response via : Initial Calibration
 Integrator: ChemStation

Volume Inj. : 1 µl
 Signal #1 Phase : ZB-MR2 Signal #2 Phase: ZB-MR1
 Signal #1 Info : 30M x 0.32mm x0.2 Signal #2 Info : 30M x 0.32mm x0.5µm

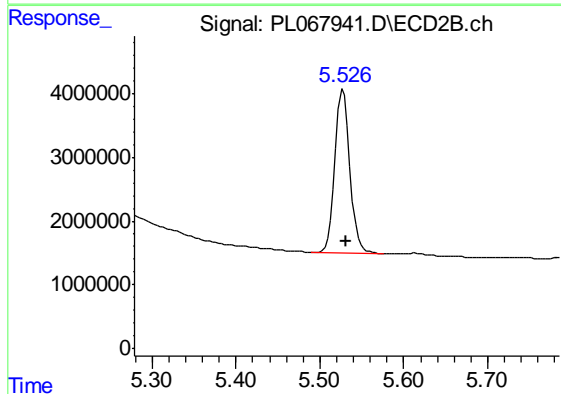




#1 Tetrachloro-m-xylene

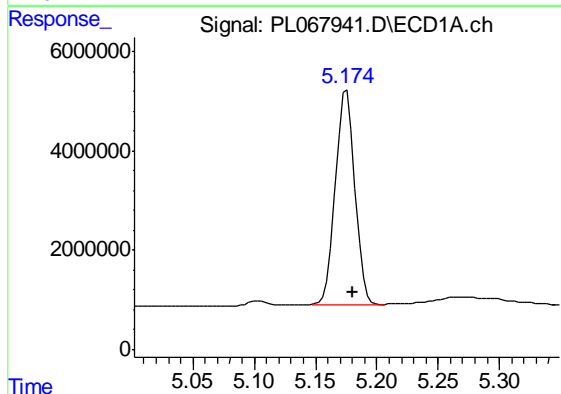
R.T.: 4.476 min
 Delta R.T.: -0.005 min
 Response: 11446988
 Conc: 20.82 ng/ml

Instrument :
 ECD_L
 ClientSampleId :
 WC-CROPSEY-SOLIDSMS



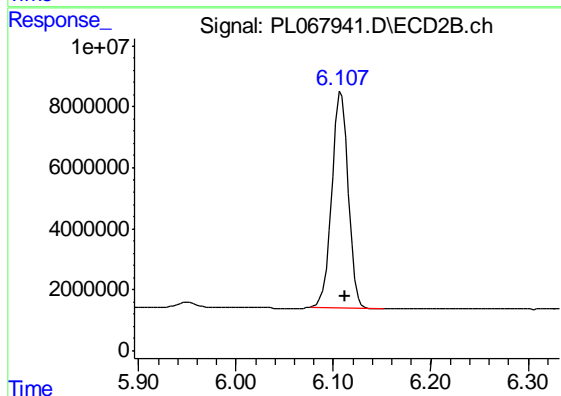
#1 Tetrachloro-m-xylene

R.T.: 5.528 min
 Delta R.T.: -0.003 min
 Response: 31869365
 Conc: 33.81 ng/ml



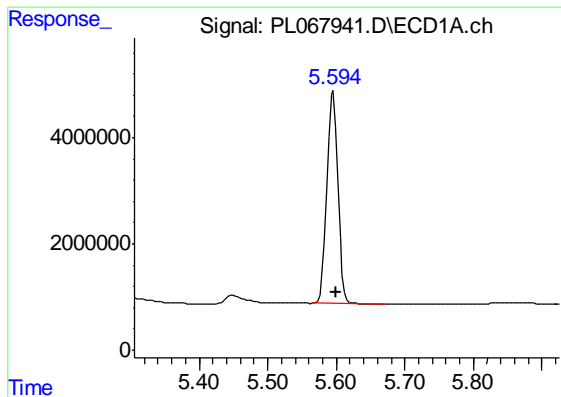
#2 alpha-BHC

R.T.: 5.175 min
 Delta R.T.: -0.005 min
 Response: 47802635
 Conc: 64.99 ng/ml



#2 alpha-BHC

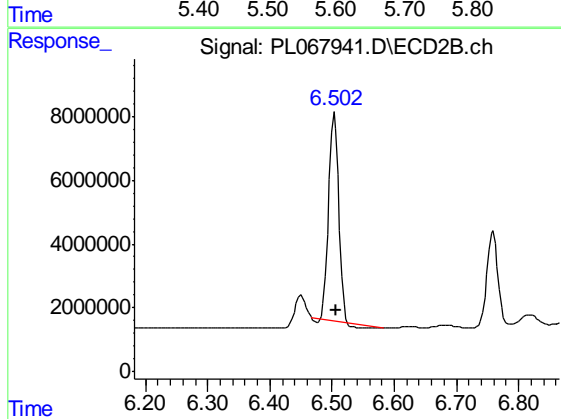
R.T.: 6.108 min
 Delta R.T.: -0.003 min
 Response: 83852875
 Conc: 67.82 ng/ml



#3 gamma-BHC (Lindane)

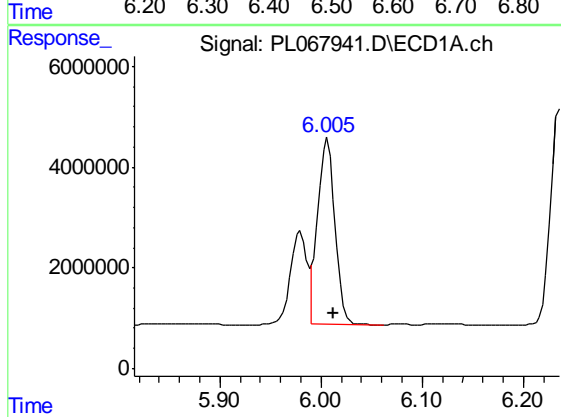
R.T.: 5.596 min
Delta R.T.: -0.005 min
Response: 45450793
Conc: 60.65 ng/ml

Instrument :
ECD_L
ClientSampleId :
WC-CROPSEY-SOLIDSMS



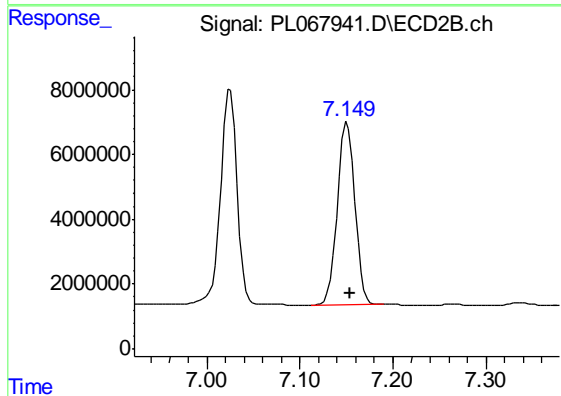
#3 gamma-BHC (Lindane)

R.T.: 6.504 min
Delta R.T.: -0.003 min
Response: 71814623
Conc: 60.91 ng/ml



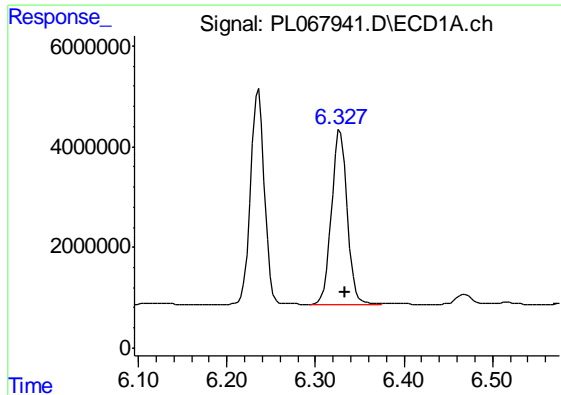
#4 Heptachlor

R.T.: 6.007 min
Delta R.T.: -0.005 min
Response: 44922693
Conc: 59.56 ng/ml



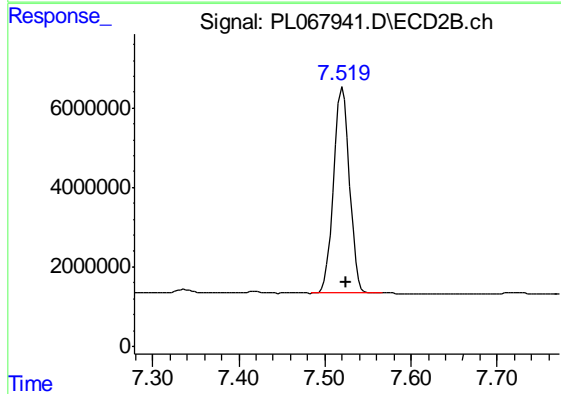
#4 Heptachlor

R.T.: 7.151 min
Delta R.T.: -0.004 min
Response: 73729168
Conc: 66.11 ng/ml

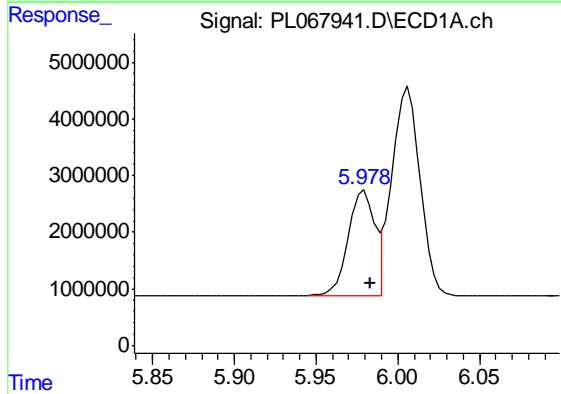


#5 Aldrin
 R.T.: 6.328 min
 Delta R.T.: -0.006 min
 Response: 42831157
 Conc: 58.21 ng/ml

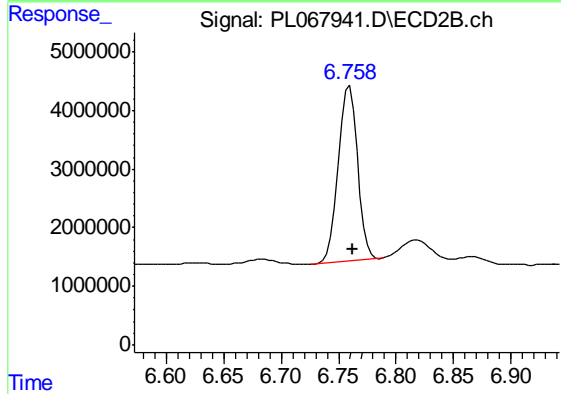
Instrument :
 ECD_L
ClientSampleId :
 WC-CROPSEY-SOLIDSMS



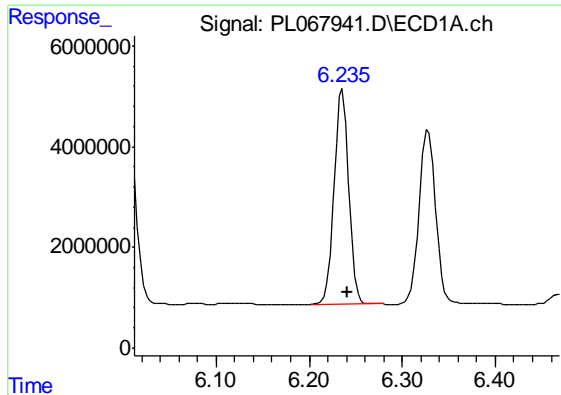
#5 Aldrin
 R.T.: 7.520 min
 Delta R.T.: -0.005 min
 Response: 66523356
 Conc: 61.46 ng/ml



#6 beta-BHC
 R.T.: 5.979 min
 Delta R.T.: -0.004 min
 Response: 20666222
 Conc: 57.76 ng/ml



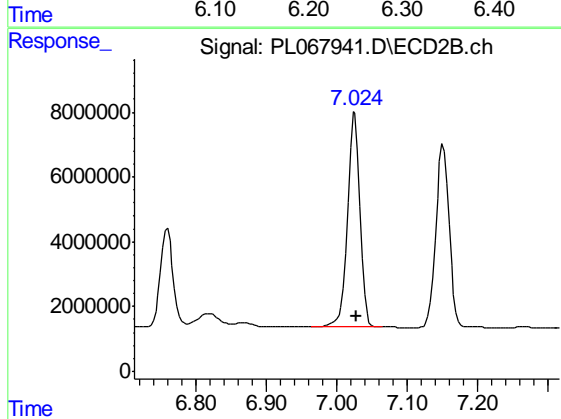
#6 beta-BHC
 R.T.: 6.759 min
 Delta R.T.: -0.003 min
 Response: 36260058
 Conc: 66.78 ng/ml



#7 delta-BHC

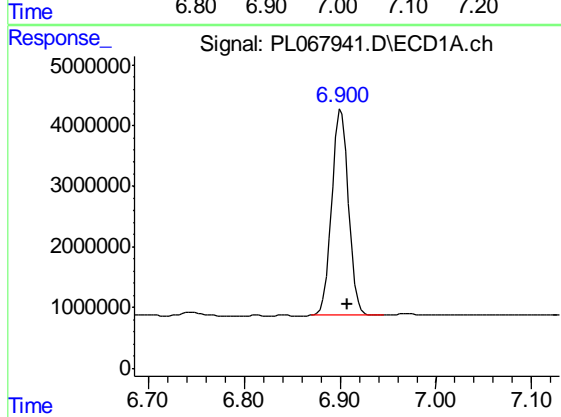
R.T.: 6.236 min
 Delta R.T.: -0.005 min
 Response: 46578944
 Conc: 63.07 ng/ml

Instrument :
 ECD_L
 ClientSampleId :
 WC-CROPSEY-SOLIDSMS



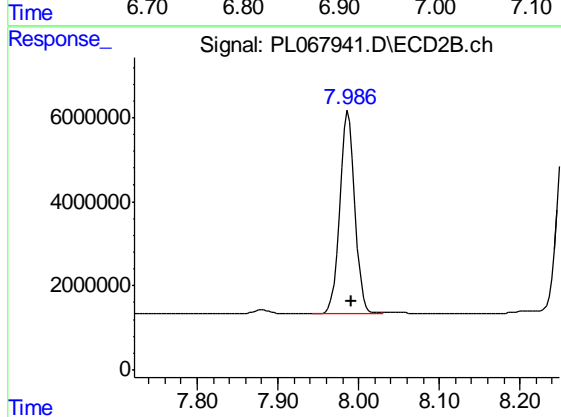
#7 delta-BHC

R.T.: 7.025 min
 Delta R.T.: -0.003 min
 Response: 80976276
 Conc: 68.89 ng/ml



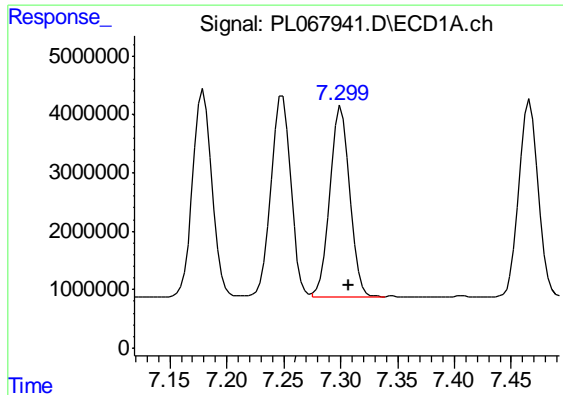
#8 Heptachlor epoxide

R.T.: 6.901 min
 Delta R.T.: -0.006 min
 Response: 41015085
 Conc: 58.62 ng/ml



#8 Heptachlor epoxide

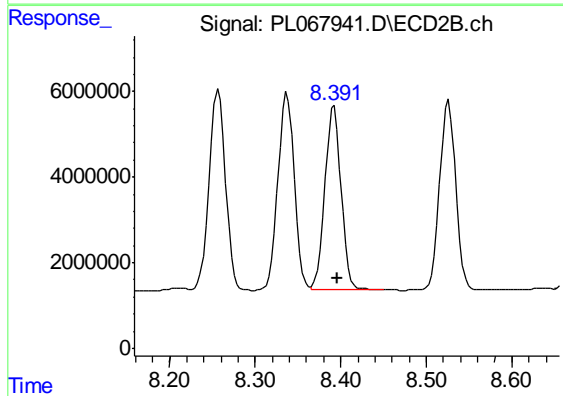
R.T.: 7.987 min
 Delta R.T.: -0.004 min
 Response: 63072832
 Conc: 62.96 ng/ml



#9 Endosulfan I

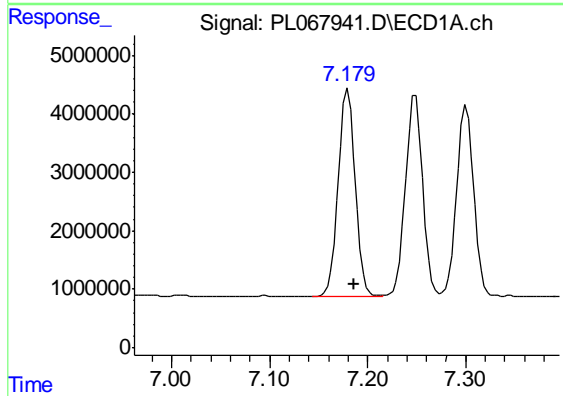
R.T.: 7.301 min
 Delta R.T.: -0.006 min
 Response: 39021659
 Conc: 58.04 ng/ml

Instrument :
 ECD_L
 ClientSampleId :
 WC-CROPSEY-SOLIDSMS



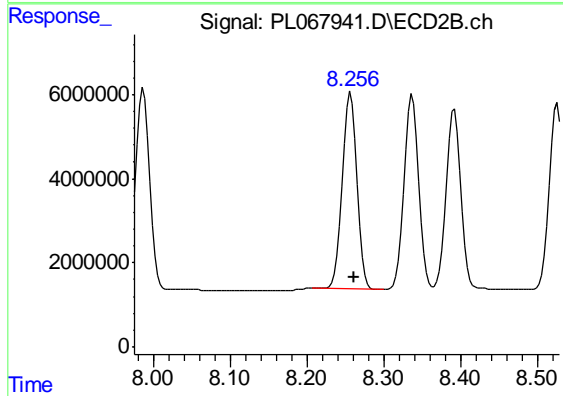
#9 Endosulfan I

R.T.: 8.392 min
 Delta R.T.: -0.004 min
 Response: 57244636
 Conc: 62.69 ng/ml



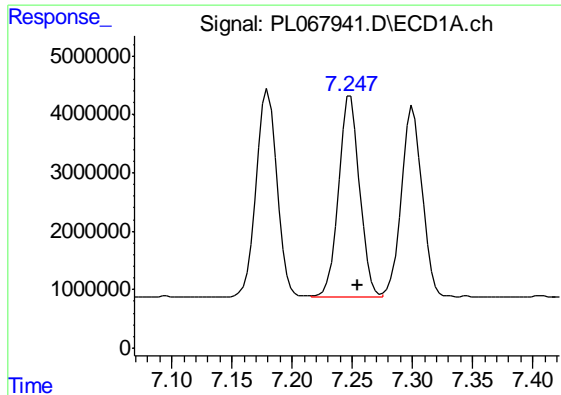
#10 gamma-Chlordane

R.T.: 7.180 min
 Delta R.T.: -0.006 min
 Response: 42368364
 Conc: 58.44 ng/ml



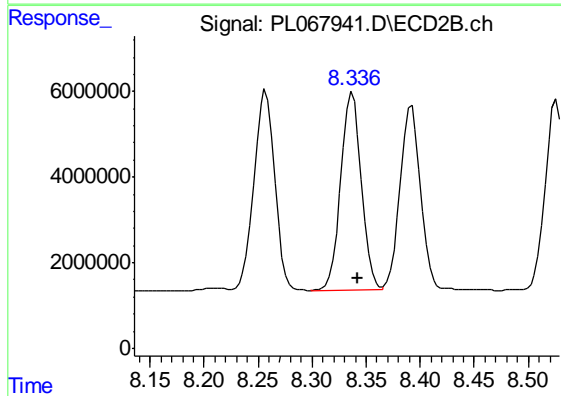
#10 gamma-Chlordane

R.T.: 8.257 min
 Delta R.T.: -0.004 min
 Response: 61598114
 Conc: 61.01 ng/ml

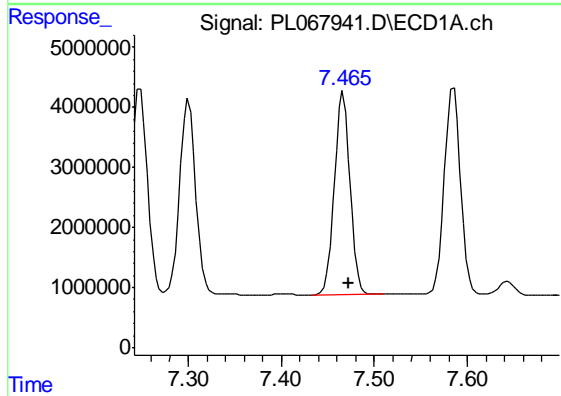


#11 alpha-Chlordane
 R.T.: 7.249 min
 Delta R.T.: -0.006 min
 Response: 42057223
 Conc: 57.45 ng/ml

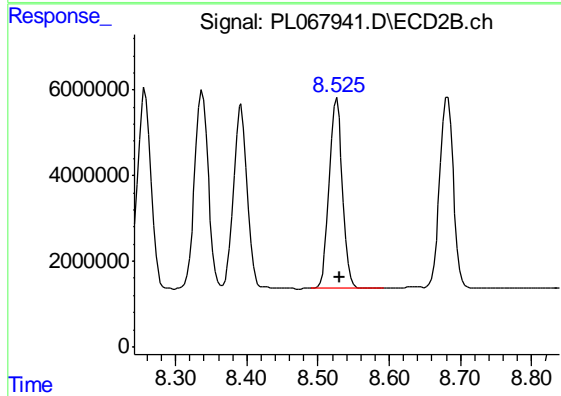
Instrument :
 ECD_L
ClientSampleId :
 WC-CROPSEY-SOLIDSMS



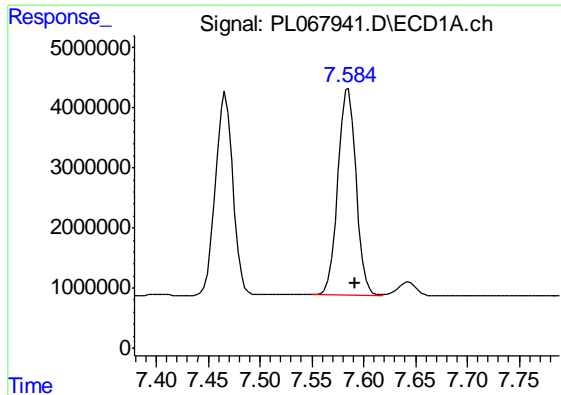
#11 alpha-Chlordane
 R.T.: 8.337 min
 Delta R.T.: -0.005 min
 Response: 61336612
 Conc: 60.75 ng/ml



#12 4,4'-DDE
 R.T.: 7.467 min
 Delta R.T.: -0.006 min
 Response: 39406025
 Conc: 59.23 ng/ml



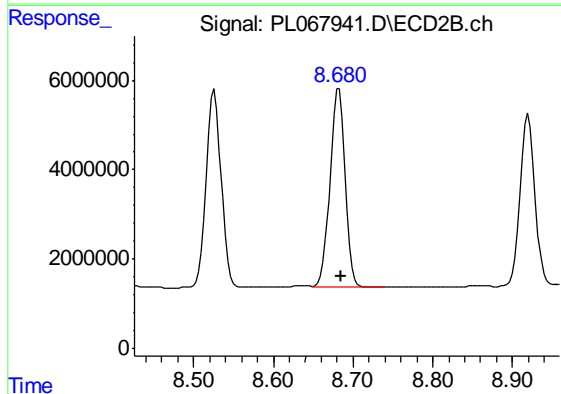
#12 4,4'-DDE
 R.T.: 8.526 min
 Delta R.T.: -0.004 min
 Response: 57650287
 Conc: 63.64 ng/ml



#13 Dieldrin

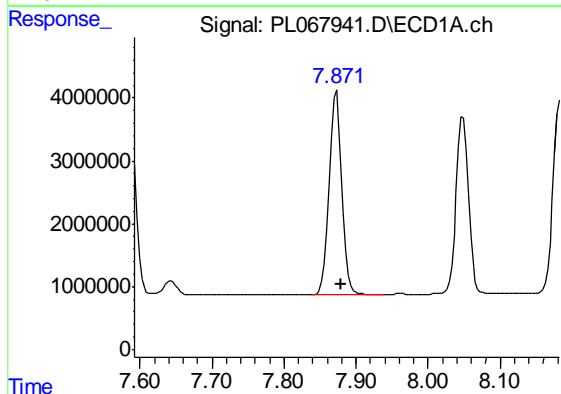
R.T.: 7.585 min
 Delta R.T.: -0.006 min
 Response: 42147532
 Conc: 60.12 ng/ml

Instrument :
 ECD_L
 ClientSampleId :
 WC-CROPSEY-SOLIDSMS



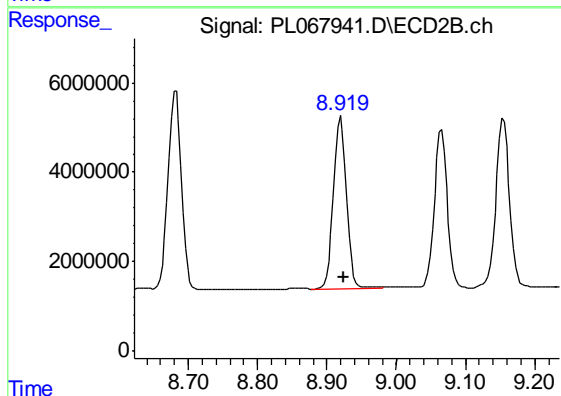
#13 Dieldrin

R.T.: 8.682 min
 Delta R.T.: -0.003 min
 Response: 59256070
 Conc: 65.24 ng/ml



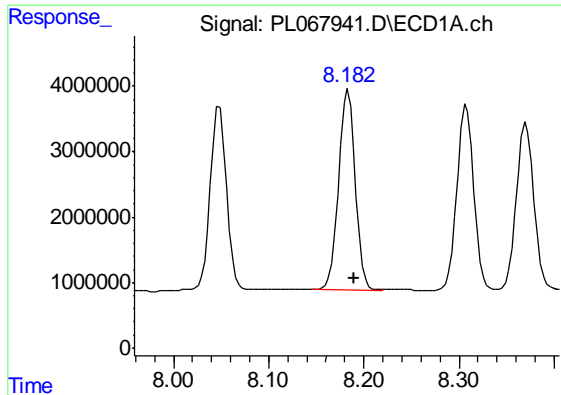
#14 Endrin

R.T.: 7.873 min
 Delta R.T.: -0.006 min
 Response: 40208930
 Conc: 61.33 ng/ml



#14 Endrin

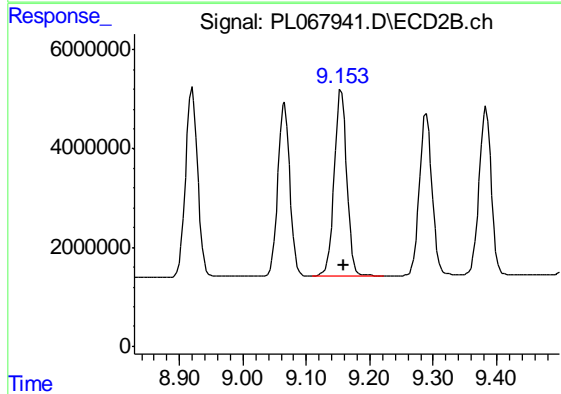
R.T.: 8.920 min
 Delta R.T.: -0.004 min
 Response: 50627125
 Conc: 66.19 ng/ml



#15 Endosulfan II

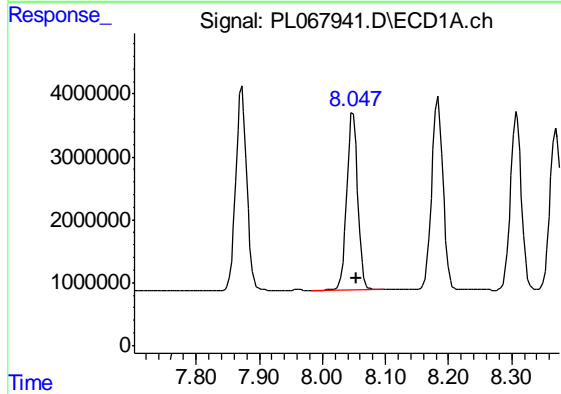
R.T.: 8.183 min
 Delta R.T.: -0.006 min
 Response: 37685717
 Conc: 61.19 ng/ml

Instrument :
 ECD_L
 ClientSampleId :
 WC-CROPSEY-SOLIDSMS



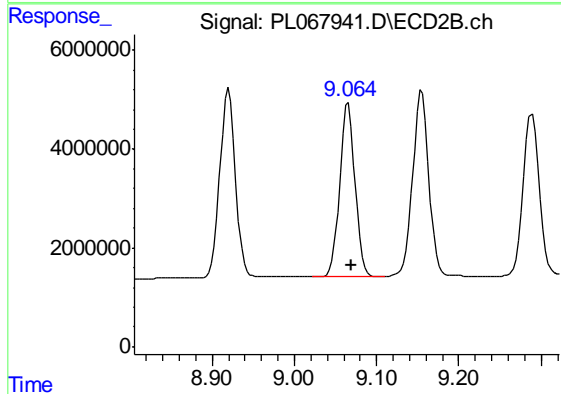
#15 Endosulfan II

R.T.: 9.155 min
 Delta R.T.: -0.004 min
 Response: 51960948
 Conc: 65.17 ng/ml



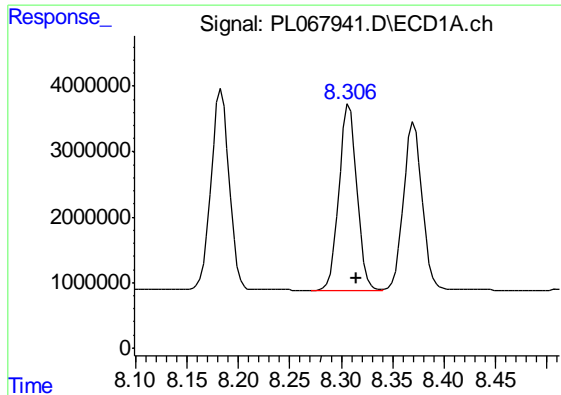
#16 4,4'-DDD

R.T.: 8.049 min
 Delta R.T.: -0.006 min
 Response: 33933175
 Conc: 58.38 ng/ml



#16 4,4'-DDD

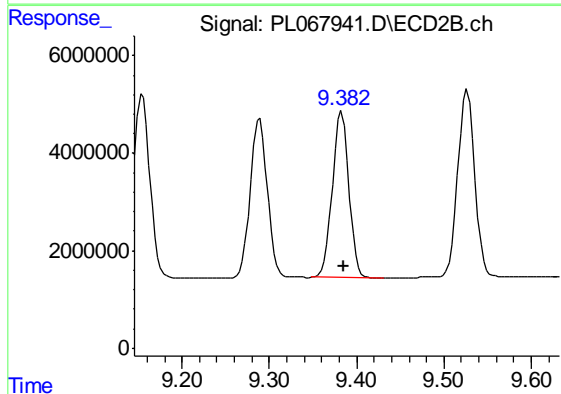
R.T.: 9.066 min
 Delta R.T.: -0.004 min
 Response: 45539729
 Conc: 64.03 ng/ml



#17 4,4'-DDT

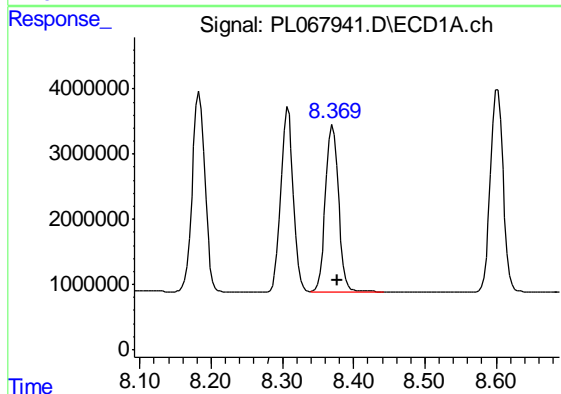
R.T.: 8.308 min
 Delta R.T.: -0.006 min
 Response: 34426220
 Conc: 59.16 ng/ml

Instrument :
 ECD_L
 ClientSampleId :
 WC-CROPSEY-SOLIDSMS



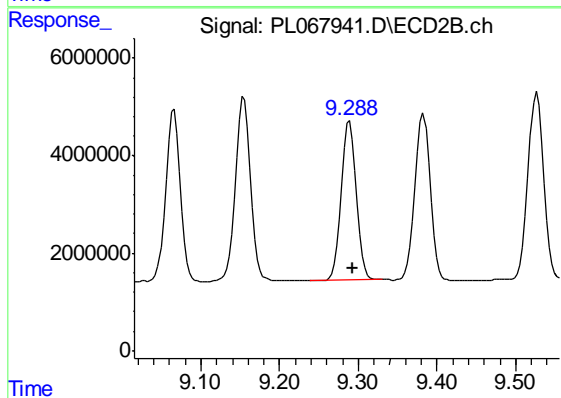
#17 4,4'-DDT

R.T.: 9.383 min
 Delta R.T.: -0.003 min
 Response: 44672920
 Conc: 60.93 ng/ml



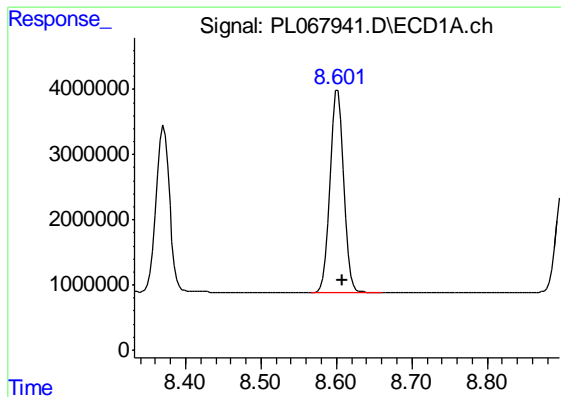
#18 Endrin aldehyde

R.T.: 8.371 min
 Delta R.T.: -0.006 min
 Response: 32570098
 Conc: 64.33 ng/ml



#18 Endrin aldehyde

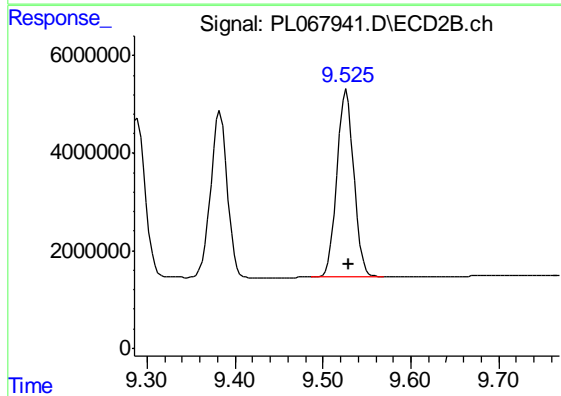
R.T.: 9.289 min
 Delta R.T.: -0.003 min
 Response: 44429726
 Conc: 69.57 ng/ml



#19 Endosulfan Sulfate

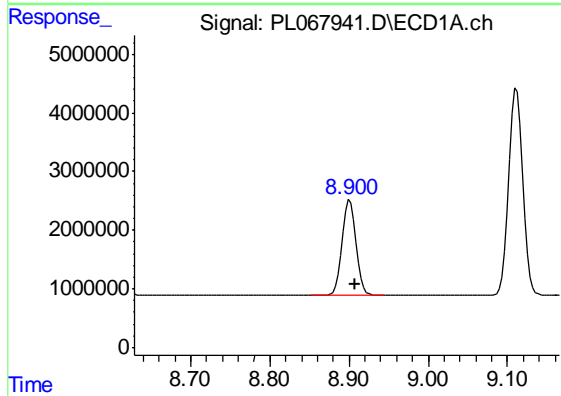
R.T.: 8.602 min
 Delta R.T.: -0.006 min
 Response: 38591505
 Conc: 60.79 ng/ml

Instrument :
 ECD_L
 ClientSampleId :
 WC-CROPSEY-SOLIDSMS



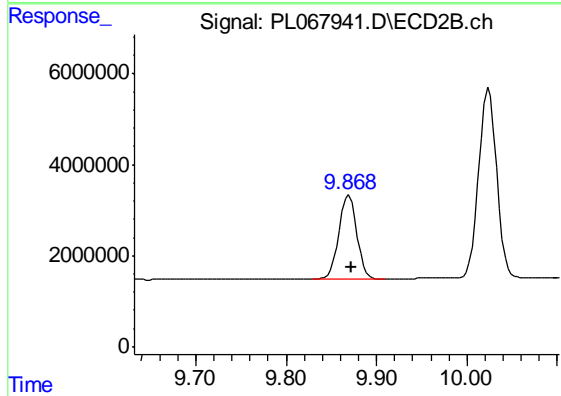
#19 Endosulfan Sulfate

R.T.: 9.527 min
 Delta R.T.: -0.003 min
 Response: 51492854
 Conc: 64.84 ng/ml



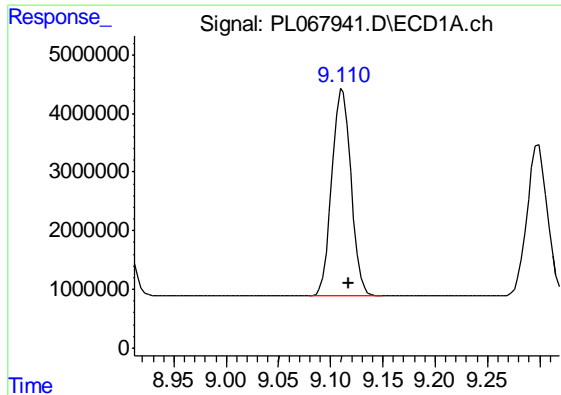
#20 Methoxychlor

R.T.: 8.901 min
 Delta R.T.: -0.007 min
 Response: 20440613
 Conc: 57.50 ng/ml



#20 Methoxychlor

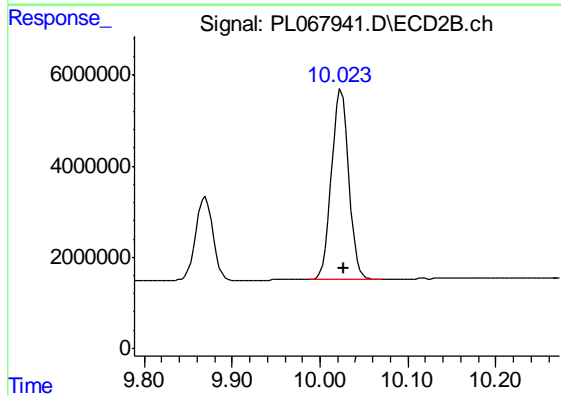
R.T.: 9.870 min
 Delta R.T.: -0.002 min
 Response: 24879663
 Conc: 63.99 ng/ml



#21 Endrin ketone

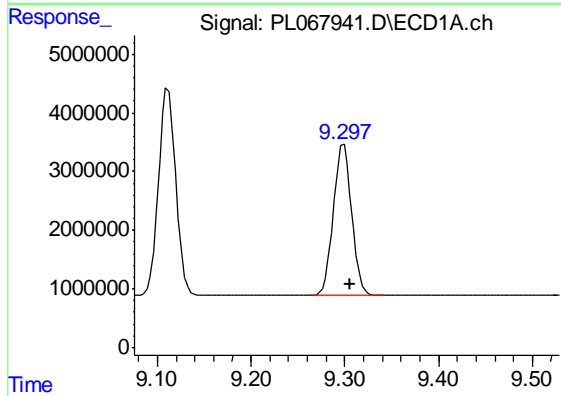
R.T.: 9.111 min
 Delta R.T.: -0.006 min
 Response: 45109631
 Conc: 59.25 ng/ml

Instrument :
 ECD_L
 ClientSampleId :
 WC-CROPSEY-SOLIDSMS



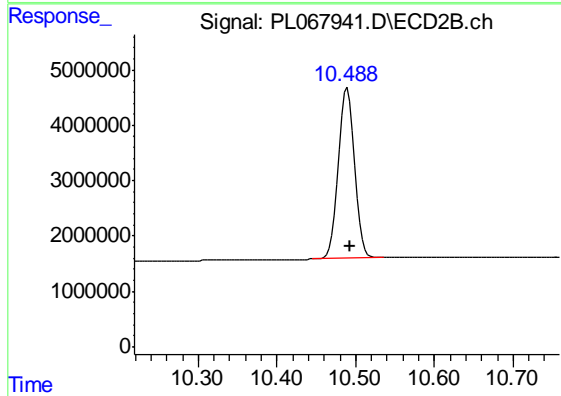
#21 Endrin ketone

R.T.: 10.024 min
 Delta R.T.: -0.002 min
 Response: 57251614
 Conc: 63.17 ng/ml



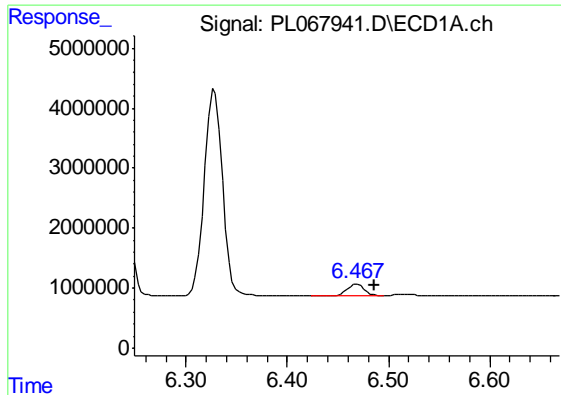
#22 Mirex

R.T.: 9.299 min
 Delta R.T.: -0.007 min
 Response: 35149338
 Conc: 55.81 ng/ml



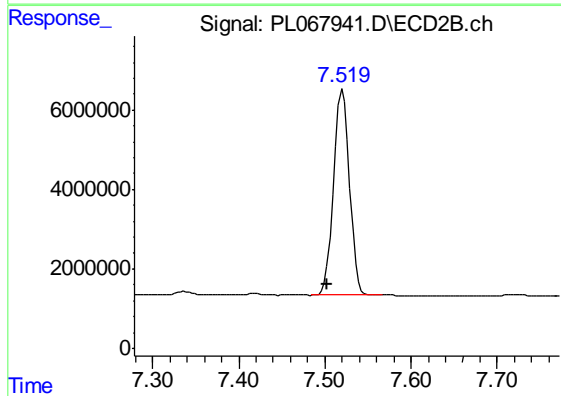
#22 Mirex

R.T.: 10.489 min
 Delta R.T.: -0.003 min
 Response: 45429259
 Conc: 60.09 ng/ml

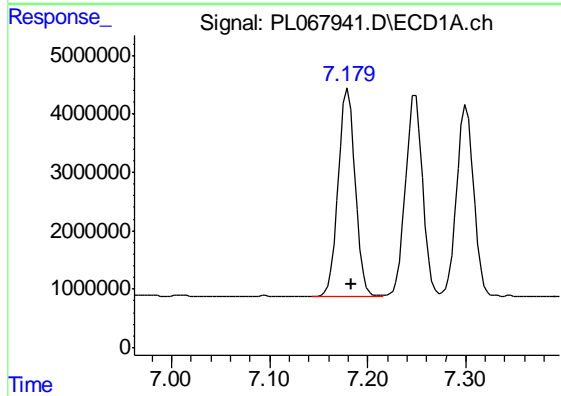


#24 Chlordane-2
 R.T.: 6.469 min
 Delta R.T.: -0.018 min
 Response: 2391314
 Conc: 89.30 ng/ml

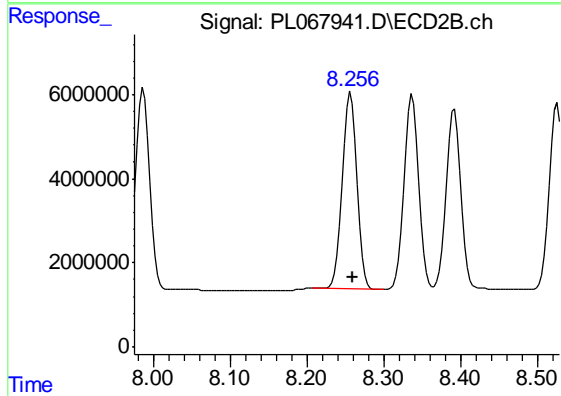
Instrument :
 ECD_L
 ClientSampleId :
 WC-CROPSEY-SOLIDSMS



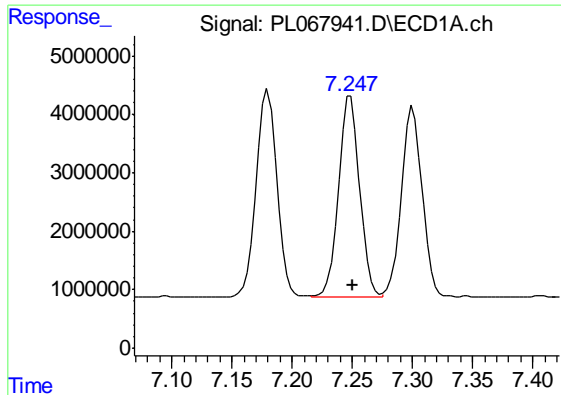
#24 Chlordane-2
 R.T.: 7.520 min
 Delta R.T.: 0.018 min
 Response: 66523356
 Conc: 1825.25 ng/ml



#25 Chlordane-3
 R.T.: 7.180 min
 Delta R.T.: -0.004 min
 Response: 42368364
 Conc: 630.57 ng/ml



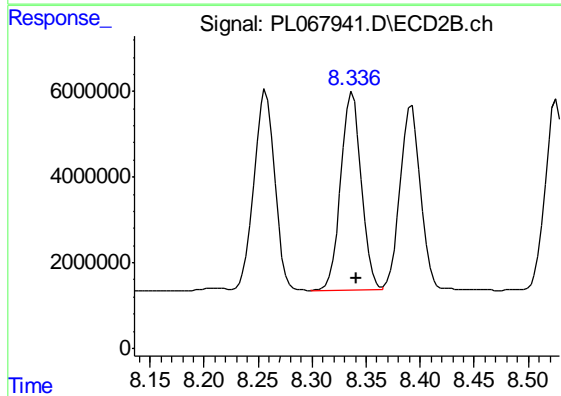
#25 Chlordane-3
 R.T.: 8.257 min
 Delta R.T.: -0.002 min
 Response: 61598114
 Conc: 460.24 ng/ml



#26 Chlordane-4

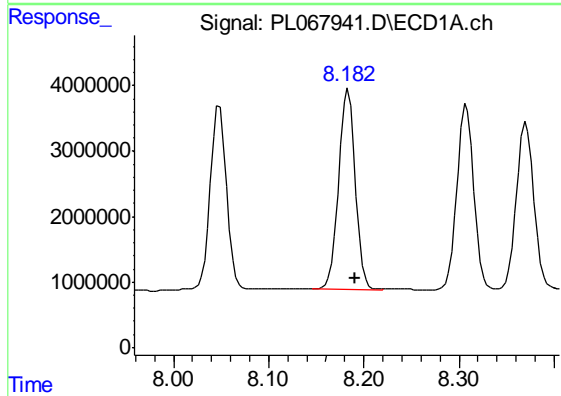
R.T.: 7.249 min
 Delta R.T.: -0.002 min
 Response: 42057223
 Conc: 575.51 ng/ml

Instrument :
 ECD_L
 ClientSampleId :
 WC-CROPSEY-SOLIDSMS



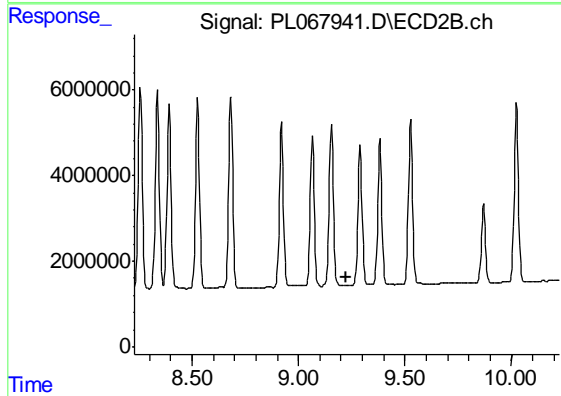
#26 Chlordane-4

R.T.: 8.337 min
 Delta R.T.: -0.004 min
 Response: 61336612
 Conc: 378.39 ng/ml



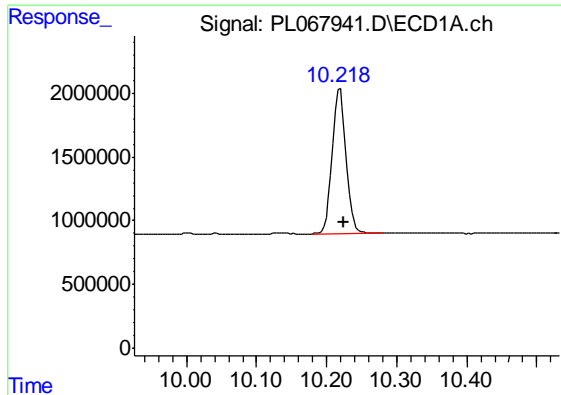
#27 Chlordane-5

R.T.: 8.183 min
 Delta R.T.: -0.007 min
 Response: 37685717
 Conc: 1722.45 ng/ml



#27 Chlordane-5

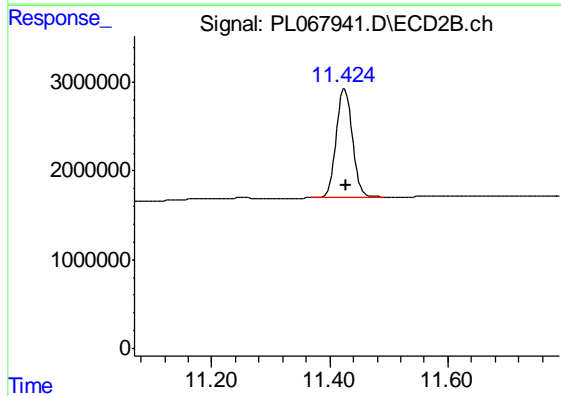
R.T.: 0.000 min
 Exp R.T. : 9.227 min
 Response: 0
 Conc: N.D.



#28 Decachlorobiphenyl

R.T.: 10.219 min
Delta R.T.: -0.006 min
Response: 15598021
Conc: 22.01 ng/ml

Instrument :
ECD_L
ClientSampleId :
WC-CROPSEY-SOLIDSMS



#28 Decachlorobiphenyl

R.T.: 11.425 min
Delta R.T.: -0.003 min
Response: 23059556
Conc: 23.15 ng/ml