

Data Path : Z:\pestpcbsrv\HPCHEM1\ECD\_L\Data\PL070221\  
 Data File : PL067955.D  
 Signal(s) : Signal #1: ECD1A.ch Signal #2: ECD2B.ch  
 Acq On : 02 Jul 2021 21:00  
 Operator : AR\AJ  
 Sample : PSTDCCC050  
 Misc :  
 ALS Vial : 4 Sample Multiplier: 1

Instrument :  
 ECD\_L  
 ClientSampleId :  
 PSTDCCC050

Integration File signal 1: autoint1.e  
 Integration File signal 2: autoint2.e  
 Quant Time: Jul 03 02:19:58 2021  
 Quant Method : Z:\pestpcbsrv\HPCHEM1\ECD\_L\methods\PL061021.M  
 Quant Title : GC Extractables  
 QLast Update : Fri Jun 11 02:00:12 2021  
 Response via : Initial Calibration  
 Integrator: ChemStation

Volume Inj. : 1 µl  
 Signal #1 Phase : ZB-MR2 Signal #2 Phase: ZB-MR1  
 Signal #1 Info : 30M x 0.32mm x0.2 Signal #2 Info : 30M x 0.32mm x0.5µm

Compound	RT#1	RT#2	Resp#1	Resp#2	ng/ml	ng/ml
-----						
System Monitoring Compounds						
1) SA Tetrachlo...	4.476	5.527	28308661	51991779	51.490	55.150
28) SA Decachlor...	10.217	11.425	34228790	52942726	48.299	53.152
Target Compounds						
2) A alpha-BHC	5.176	6.108	40708477	71026410	55.348	57.443
3) MA gamma-BHC...	5.595	6.504	39020220	67506368	52.067	57.259
4) MA Heptachlor	6.006	7.151	40374795	66339960	53.526	59.486
5) MB Aldrin	6.327	7.521	38696923	60238811	52.592	55.656
6) B beta-BHC	5.978	6.759	17744514	31113258	49.592	57.298
7) B delta-BHC	6.235	7.025	39284518	66369690	53.189	56.460
8) B Heptachlor...	6.901	7.988	36237016	55665475	51.792	55.567
9) A Endosulfan I	7.300	8.392	34490371	50282199	51.305	55.066
10) B gamma-Chl...	7.179	8.257	37374661	54834386	51.551	54.310
11) B alpha-Chl...	7.247	8.338	37328588	54495708	50.987	53.977
12) B 4,4'-DDE	7.466	8.527	34611461	50346669	52.023	55.575
13) MA Dieldrin	7.584	8.681	35084046	50708602	50.048	55.832
14) MA Endrin	7.871	8.920	33870588	42179157	51.659	55.143
15) B Endosulfa...	8.182	9.154	31184760	43012607	50.635	53.948
16) A 4,4'-DDD	8.047	9.066	30126385	39960851	51.828	56.188
17) MA 4,4'-DDT	8.307	9.382	30534187	41425747	52.475	56.504
18) B Endrin al...	8.369	9.289	25489185	34856866	50.347	54.581
19) B Endosulfa...	8.601	9.526	32008684	42594782	50.423	53.634
20) A Methoxychlor	8.900	9.869	18352520	22525598	51.629	57.936
21) B Endrin ke...	9.110	10.024	38773694	49577034	50.927	54.698
22) Mirex	9.297	10.489	30736809	39333807	48.806	52.029
24) Chlordane-2	0.000	7.521f	0	60238811	N.D.	1652.816 #
25) Chlordane-3	7.179	8.257	37374661	54834386	556.248	409.707 #
26) Chlordane-4	7.247	8.338	37328588	54495708	510.800	336.185 #
27) Chlordane-5	8.182	0.000	31184760	0	1425.323	N.D. #

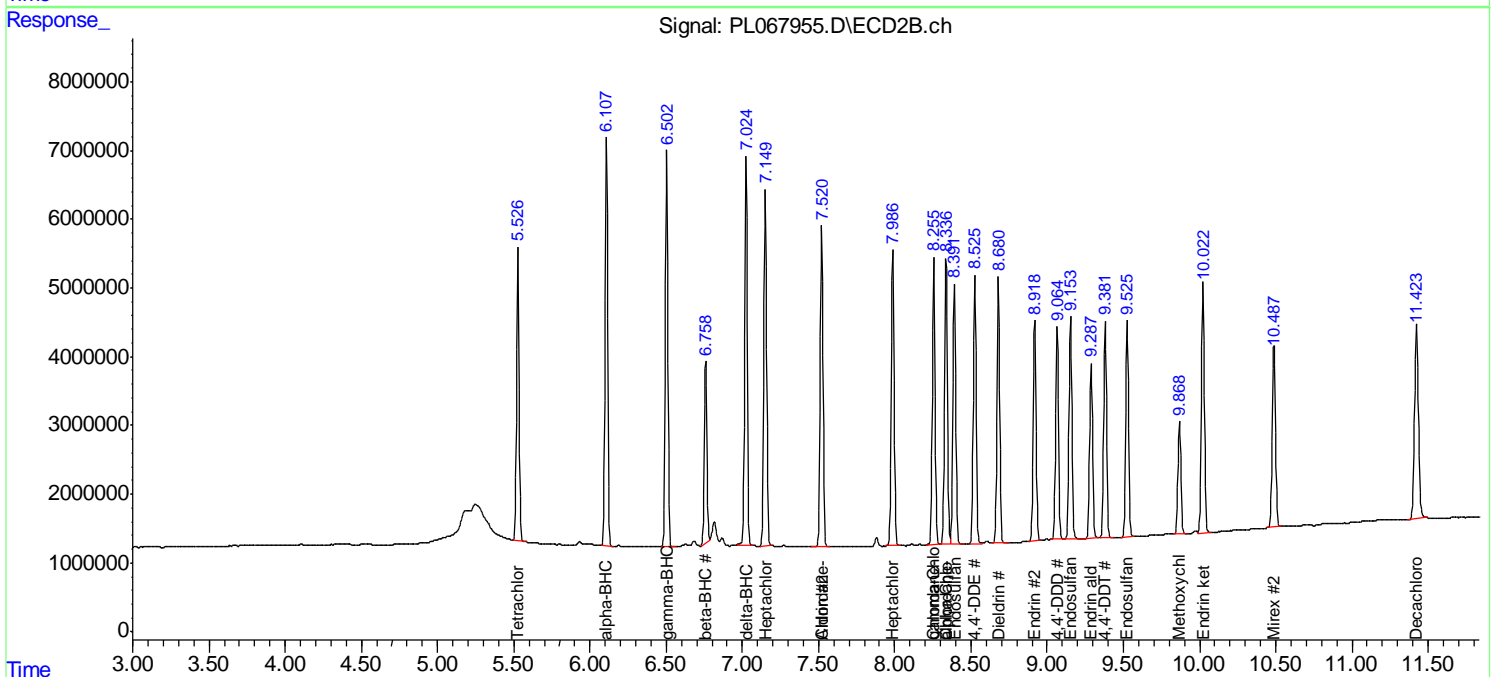
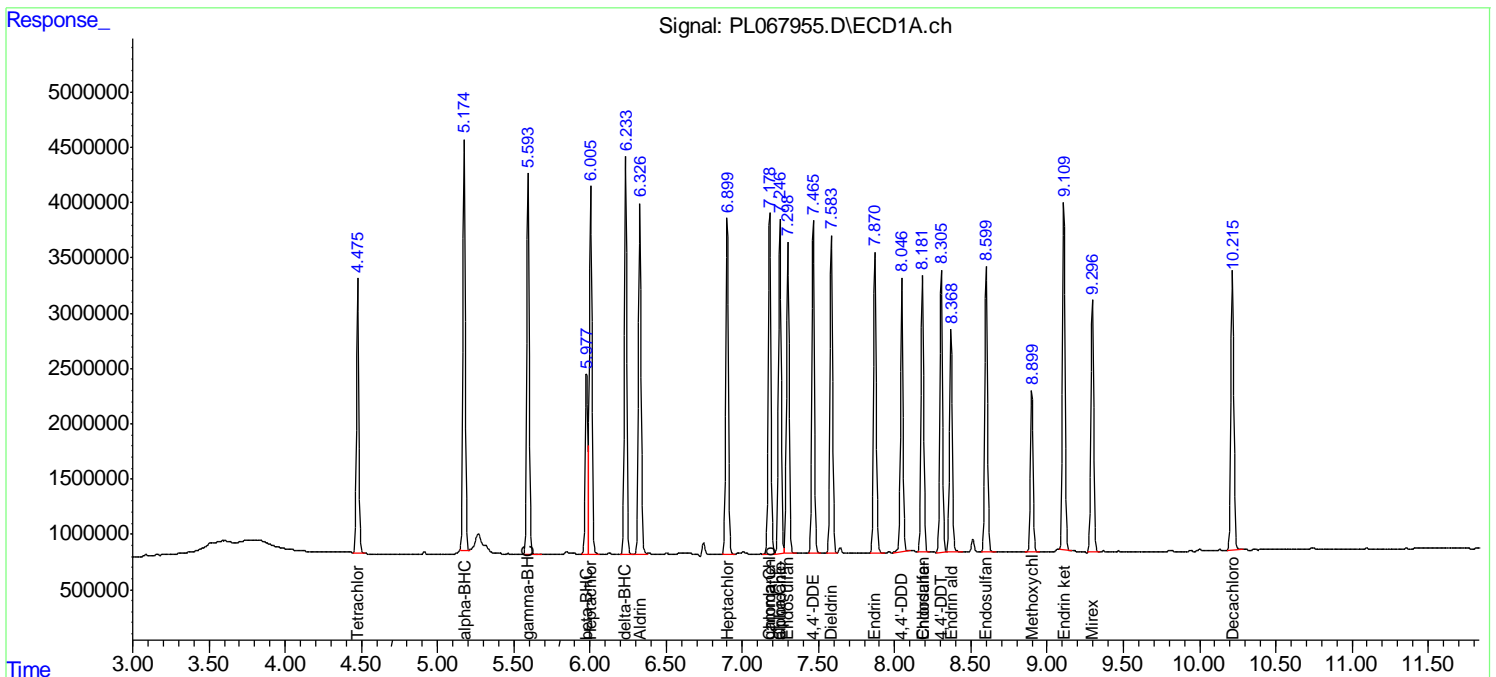
(f)=RT Delta > 1/2 Window (#)=Amounts differ by > 25% (m)=manual int.

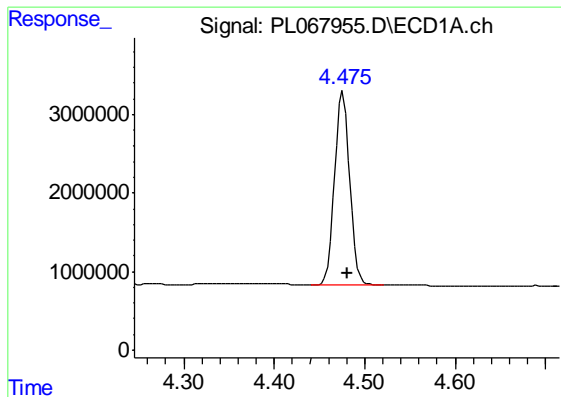
Data Path : Z:\pestpcbsrv\HPCHEM1\ECD\_L\Data\PL070221\  
 Data File : PL067955.D  
 Signal(s) : Signal #1: ECD1A.ch Signal #2: ECD2B.ch  
 Acq On : 02 Jul 2021 21:00  
 Operator : AR\AJ  
 Sample : PSTDCCC050  
 Misc :  
 ALS Vial : 4 Sample Multiplier: 1

Instrument :  
 ECD\_L  
 Client Sampled :  
 PSTDCCC050

Integration File signal 1: autoint1.e  
 Integration File signal 2: autoint2.e  
 Quant Time: Jul 03 02:19:58 2021  
 Quant Method : Z:\pestpcbsrv\HPCHEM1\ECD\_L\methods\PL061021.M  
 Quant Title : GC Extractables  
 QLast Update : Fri Jun 11 02:00:12 2021  
 Response via : Initial Calibration  
 Integrator: ChemStation

Volume Inj. : 1 µl  
 Signal #1 Phase : ZB-MR2 Signal #2 Phase: ZB-MR1  
 Signal #1 Info : 30M x 0.32mm x0.2 Signal #2 Info : 30M x 0.32mm x0.5µm

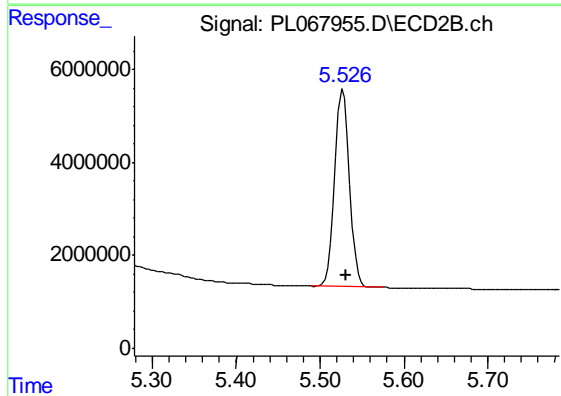




#1 Tetrachloro-m-xylene

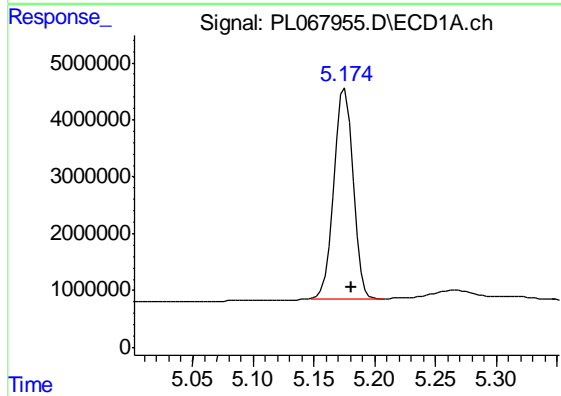
R.T.: 4.476 min  
 Delta R.T.: -0.005 min  
 Response: 28308661  
 Conc: 51.49 ng/ml

Instrument :  
 ECD\_L  
 ClientSampleId :  
 PSTDCCC050



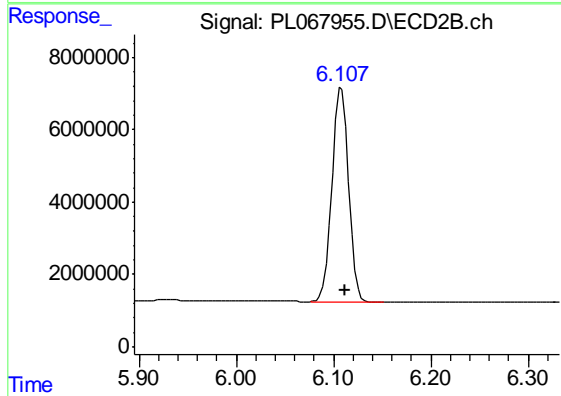
#1 Tetrachloro-m-xylene

R.T.: 5.527 min  
 Delta R.T.: -0.004 min  
 Response: 51991779  
 Conc: 55.15 ng/ml



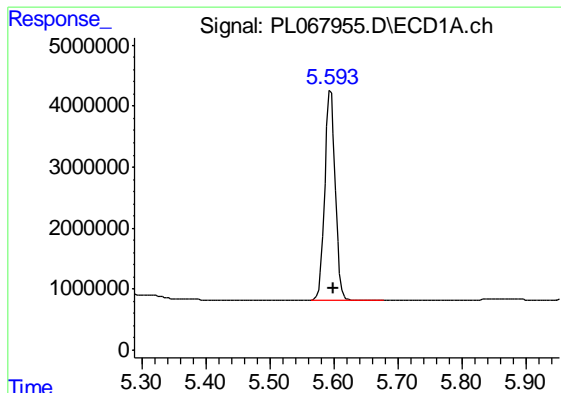
#2 alpha-BHC

R.T.: 5.176 min  
 Delta R.T.: -0.005 min  
 Response: 40708477  
 Conc: 55.35 ng/ml



#2 alpha-BHC

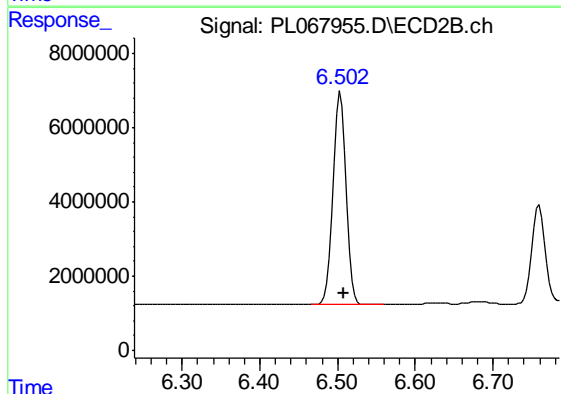
R.T.: 6.108 min  
 Delta R.T.: -0.003 min  
 Response: 71026410  
 Conc: 57.44 ng/ml



#3 gamma-BHC (Lindane)

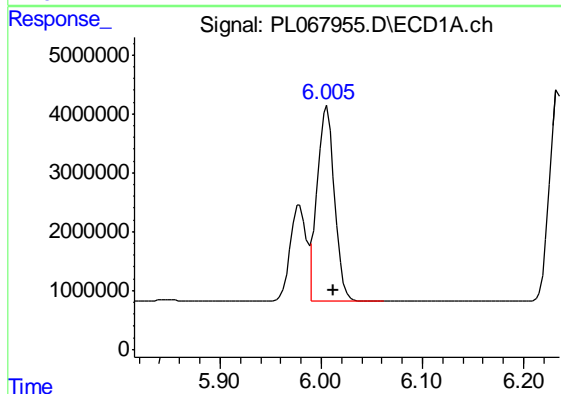
R.T.: 5.595 min  
Delta R.T.: -0.005 min  
Response: 39020220  
Conc: 52.07 ng/ml

Instrument :  
ECD\_L  
ClientSampleId :  
PSTDCCC050



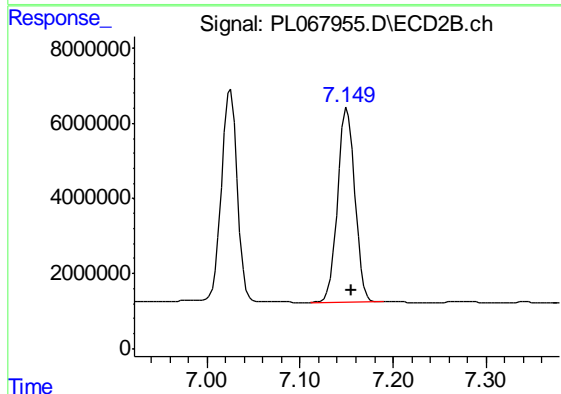
#3 gamma-BHC (Lindane)

R.T.: 6.504 min  
Delta R.T.: -0.003 min  
Response: 67506368  
Conc: 57.26 ng/ml



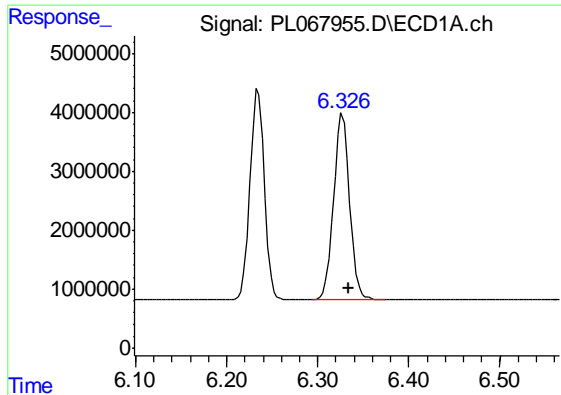
#4 Heptachlor

R.T.: 6.006 min  
Delta R.T.: -0.006 min  
Response: 40374795  
Conc: 53.53 ng/ml



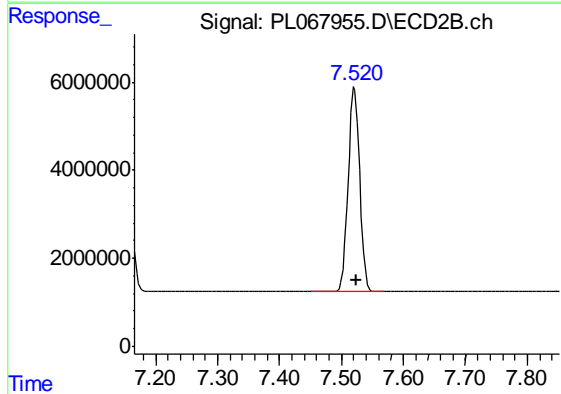
#4 Heptachlor

R.T.: 7.151 min  
Delta R.T.: -0.004 min  
Response: 66339960  
Conc: 59.49 ng/ml

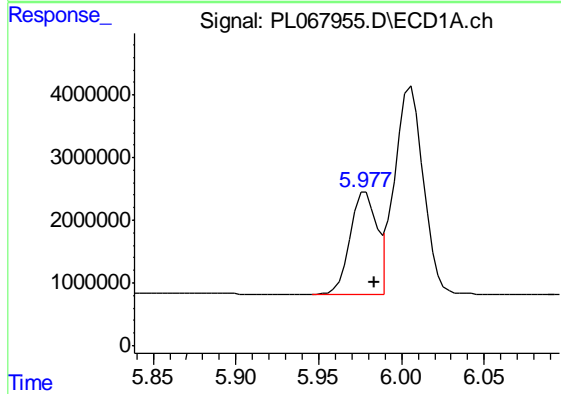


#5 Aldrin  
 R.T.: 6.327 min  
 Delta R.T.: -0.006 min  
 Response: 38696923  
 Conc: 52.59 ng/ml

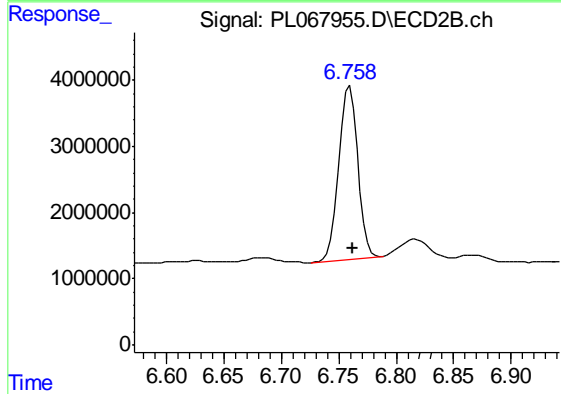
Instrument :  
 ECD\_L  
 ClientSampleId :  
 PSTDCCC050



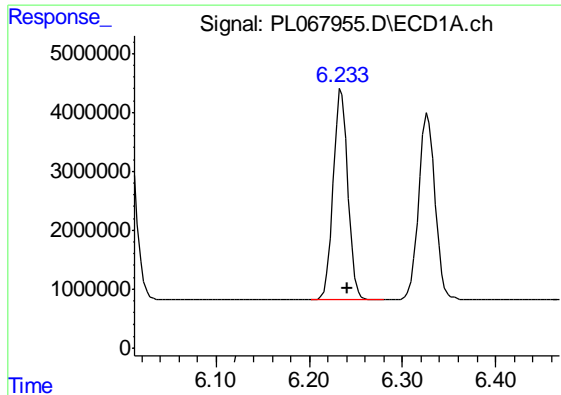
#5 Aldrin  
 R.T.: 7.521 min  
 Delta R.T.: -0.004 min  
 Response: 60238811  
 Conc: 55.66 ng/ml



#6 beta-BHC  
 R.T.: 5.978 min  
 Delta R.T.: -0.005 min  
 Response: 17744514  
 Conc: 49.59 ng/ml



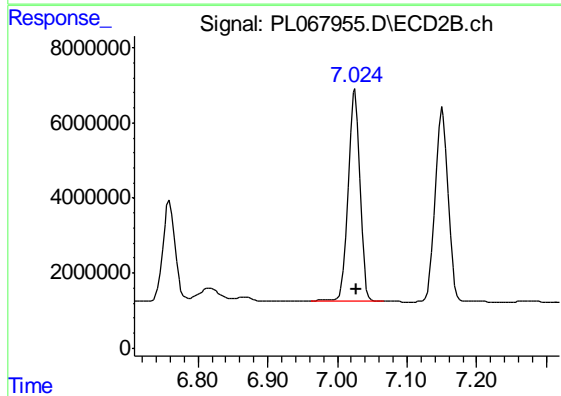
#6 beta-BHC  
 R.T.: 6.759 min  
 Delta R.T.: -0.003 min  
 Response: 31113258  
 Conc: 57.30 ng/ml



#7 delta-BHC

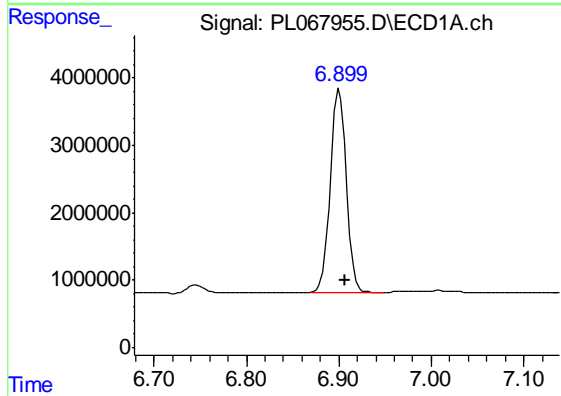
R.T.: 6.235 min  
 Delta R.T.: -0.006 min  
 Response: 39284518  
 Conc: 53.19 ng/ml

Instrument :  
 ECD\_L  
 ClientSampleId :  
 PSTDCCC050



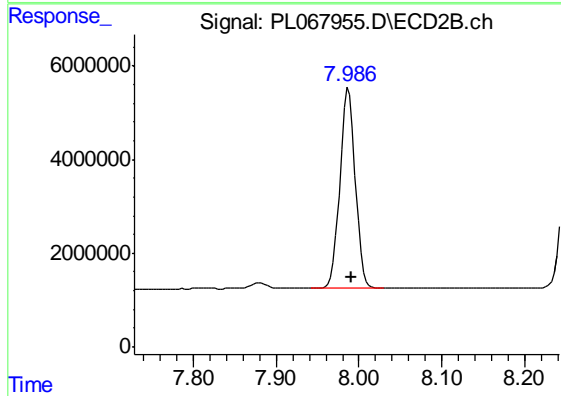
#7 delta-BHC

R.T.: 7.025 min  
 Delta R.T.: -0.003 min  
 Response: 66369690  
 Conc: 56.46 ng/ml



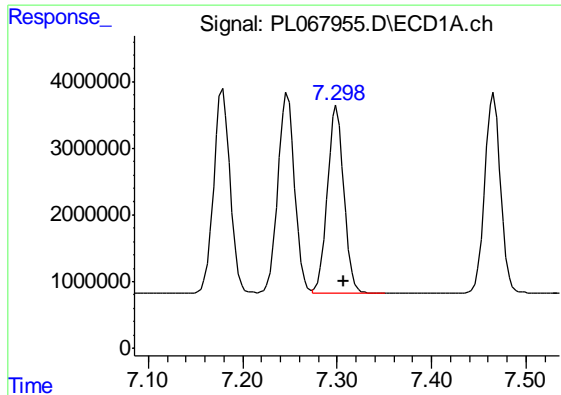
#8 Heptachlor epoxide

R.T.: 6.901 min  
 Delta R.T.: -0.007 min  
 Response: 36237016  
 Conc: 51.79 ng/ml



#8 Heptachlor epoxide

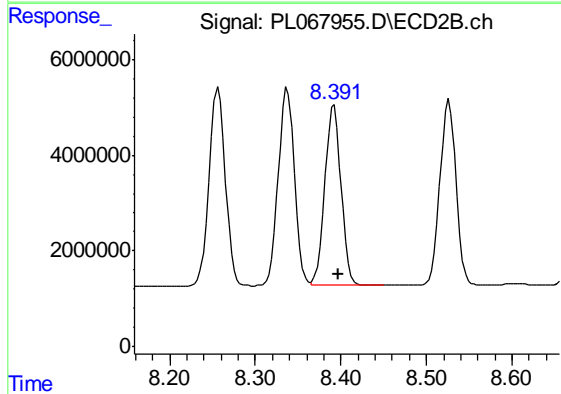
R.T.: 7.988 min  
 Delta R.T.: -0.004 min  
 Response: 55665475  
 Conc: 55.57 ng/ml



#9 Endosulfan I

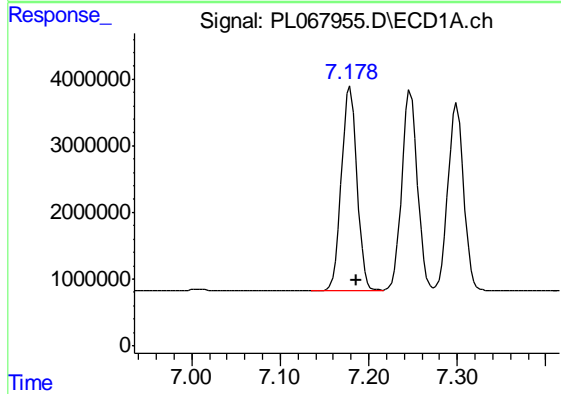
R.T.: 7.300 min  
Delta R.T.: -0.007 min  
Response: 34490371  
Conc: 51.30 ng/ml

Instrument :  
ECD\_L  
ClientSampleId :  
PSTDCCC050



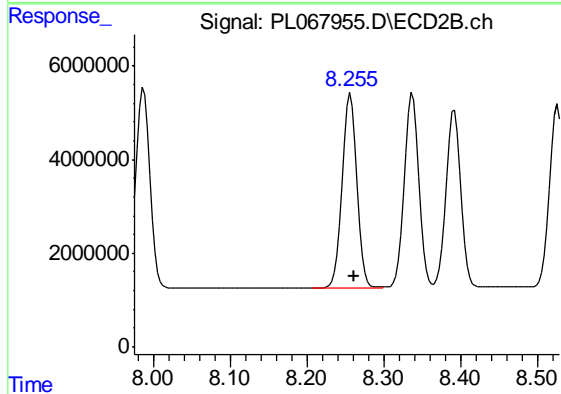
#9 Endosulfan I

R.T.: 8.392 min  
Delta R.T.: -0.005 min  
Response: 50282199  
Conc: 55.07 ng/ml



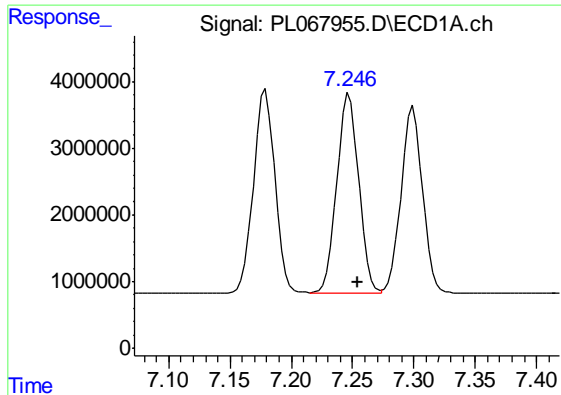
#10 gamma-Chlordane

R.T.: 7.179 min  
Delta R.T.: -0.007 min  
Response: 37374661  
Conc: 51.55 ng/ml



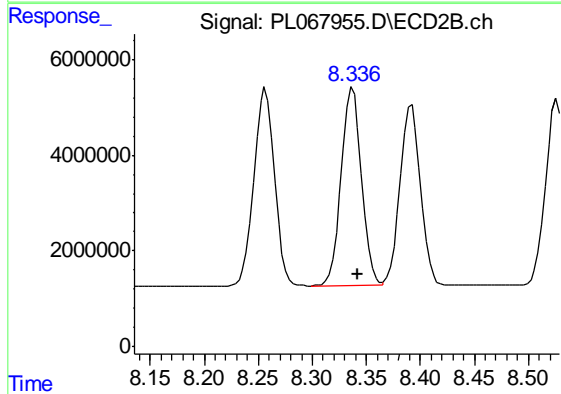
#10 gamma-Chlordane

R.T.: 8.257 min  
Delta R.T.: -0.004 min  
Response: 54834386  
Conc: 54.31 ng/ml

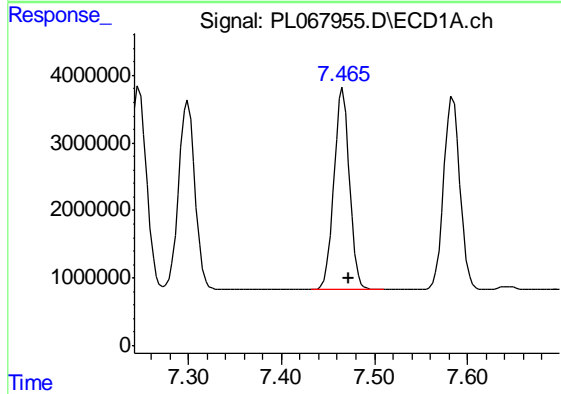


#11 alpha-Chlordane  
 R.T.: 7.247 min  
 Delta R.T.: -0.007 min  
 Response: 37328588  
 Conc: 50.99 ng/ml

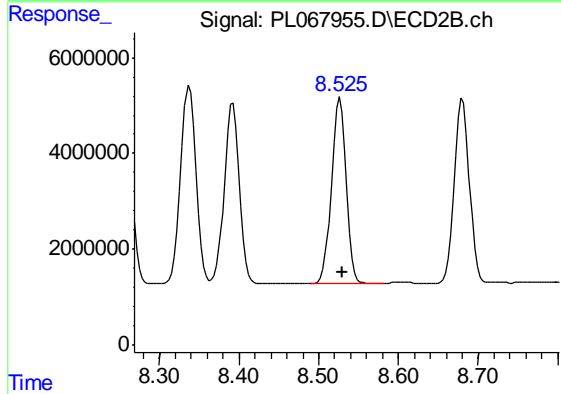
Instrument :  
 ECD\_L  
 ClientSampleId :  
 PSTDCCC050



#11 alpha-Chlordane  
 R.T.: 8.338 min  
 Delta R.T.: -0.004 min  
 Response: 54495708  
 Conc: 53.98 ng/ml

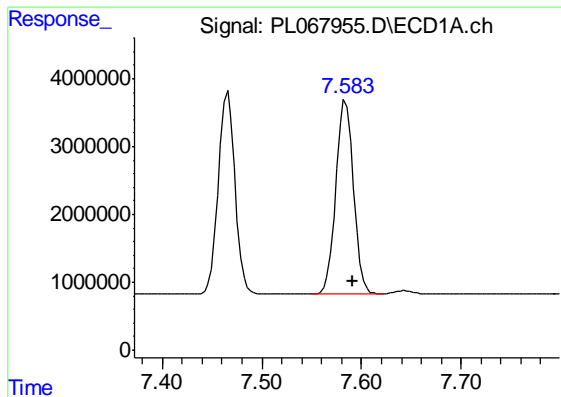


#12 4,4'-DDE  
 R.T.: 7.466 min  
 Delta R.T.: -0.007 min  
 Response: 34611461  
 Conc: 52.02 ng/ml



#12 4,4'-DDE  
 R.T.: 8.527 min  
 Delta R.T.: -0.004 min  
 Response: 50346669  
 Conc: 55.57 ng/ml

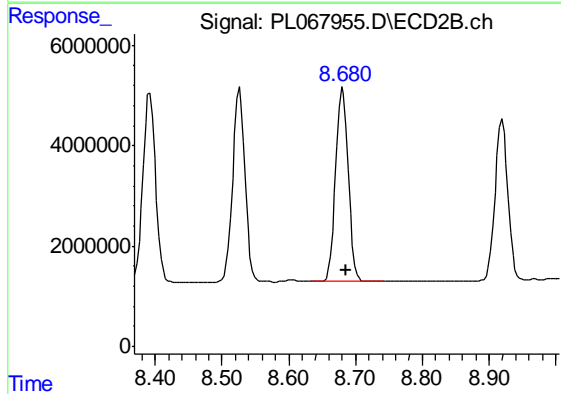




#13 Dieldrin

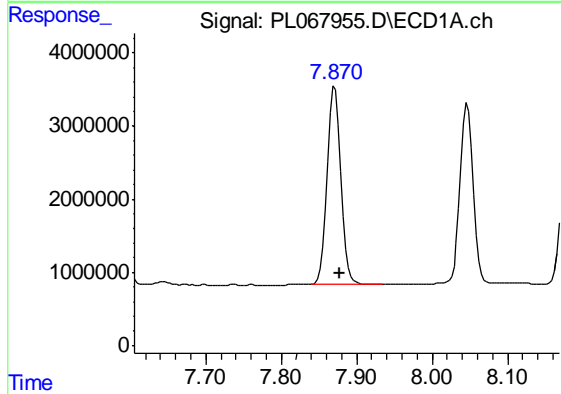
R.T.: 7.584 min  
 Delta R.T.: -0.007 min  
 Response: 35084046  
 Conc: 50.05 ng/ml

Instrument :  
 ECD\_L  
 ClientSampleId :  
 PSTDCCC050



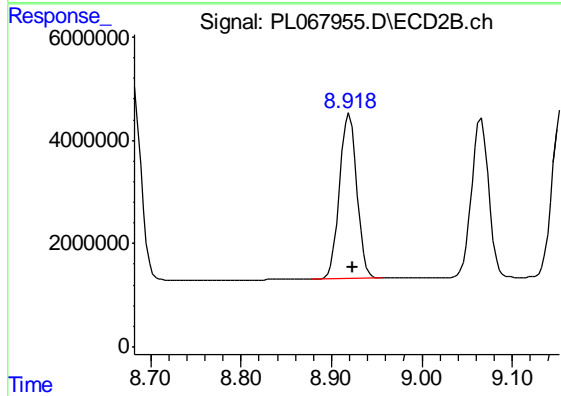
#13 Dieldrin

R.T.: 8.681 min  
 Delta R.T.: -0.004 min  
 Response: 50708602  
 Conc: 55.83 ng/ml



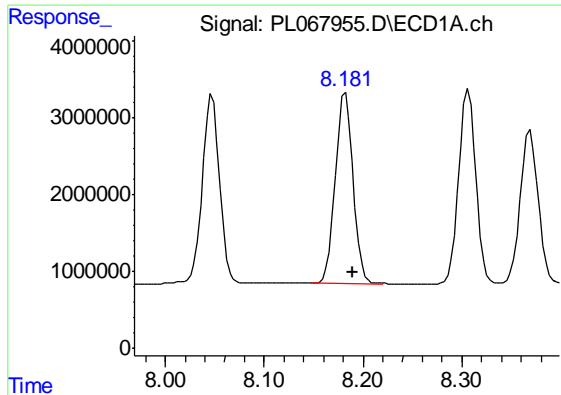
#14 Endrin

R.T.: 7.871 min  
 Delta R.T.: -0.007 min  
 Response: 33870588  
 Conc: 51.66 ng/ml



#14 Endrin

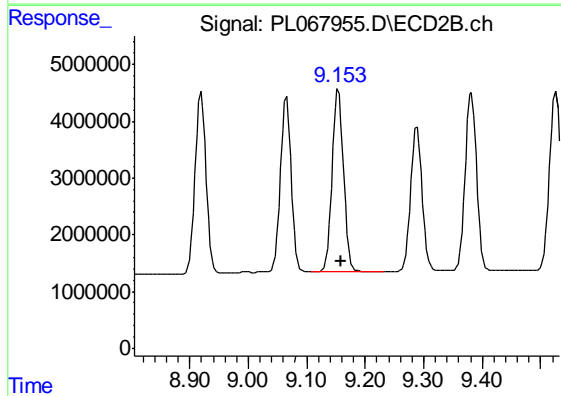
R.T.: 8.920 min  
 Delta R.T.: -0.004 min  
 Response: 42179157  
 Conc: 55.14 ng/ml



#15 Endosulfan II

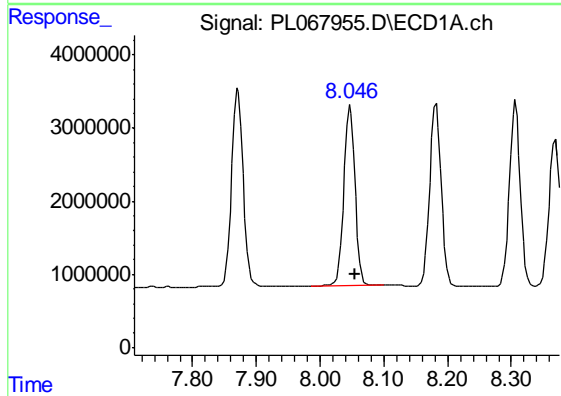
R.T.: 8.182 min  
 Delta R.T.: -0.008 min  
 Response: 31184760  
 Conc: 50.64 ng/ml

Instrument :  
 ECD\_L  
 ClientSampleId :  
 PSTDCCC050



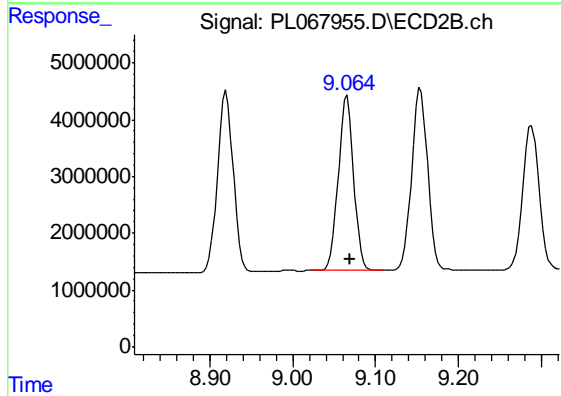
#15 Endosulfan II

R.T.: 9.154 min  
 Delta R.T.: -0.004 min  
 Response: 43012607  
 Conc: 53.95 ng/ml



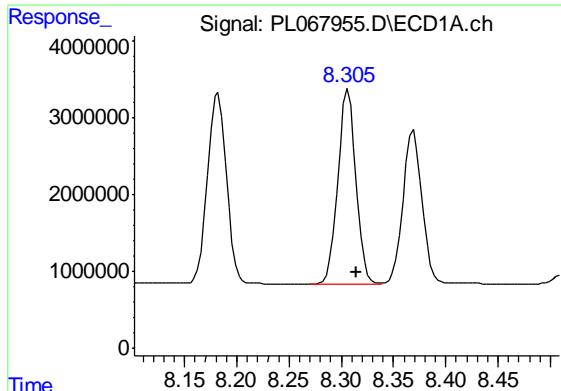
#16 4,4'-DDD

R.T.: 8.047 min  
 Delta R.T.: -0.007 min  
 Response: 30126385  
 Conc: 51.83 ng/ml



#16 4,4'-DDD

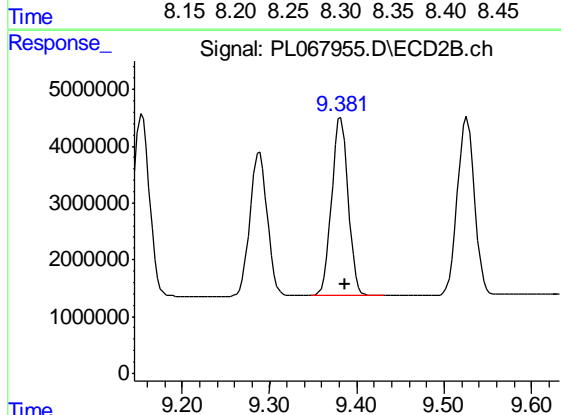
R.T.: 9.066 min  
 Delta R.T.: -0.004 min  
 Response: 39960851  
 Conc: 56.19 ng/ml



#17 4,4'-DDT

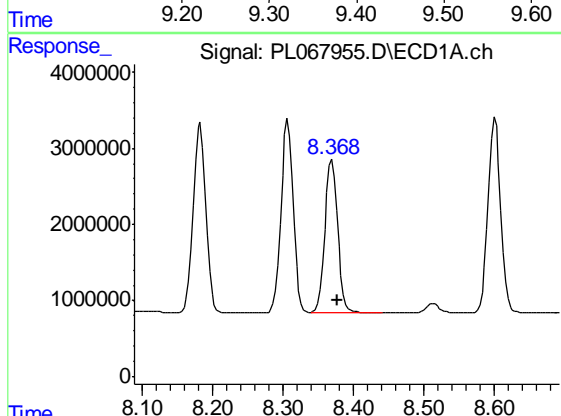
R.T.: 8.307 min  
Delta R.T.: -0.008 min  
Response: 30534187  
Conc: 52.47 ng/ml

Instrument :  
ECD\_L  
ClientSampleId :  
PSTDCCC050



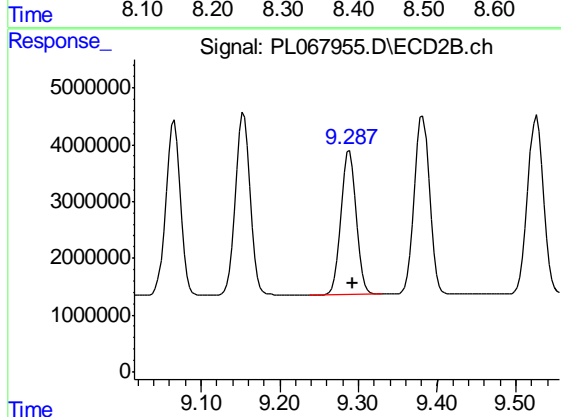
#17 4,4'-DDT

R.T.: 9.382 min  
Delta R.T.: -0.004 min  
Response: 41425747  
Conc: 56.50 ng/ml



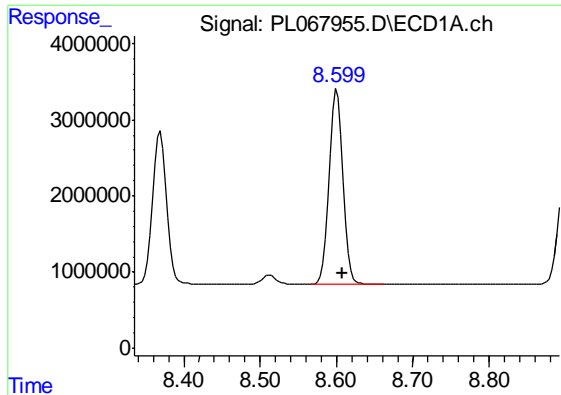
#18 Endrin aldehyde

R.T.: 8.369 min  
Delta R.T.: -0.008 min  
Response: 25489185  
Conc: 50.35 ng/ml



#18 Endrin aldehyde

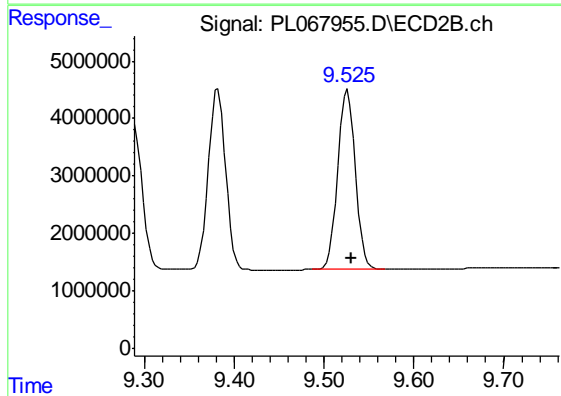
R.T.: 9.289 min  
Delta R.T.: -0.004 min  
Response: 34856866  
Conc: 54.58 ng/ml



#19 Endosulfan Sulfate

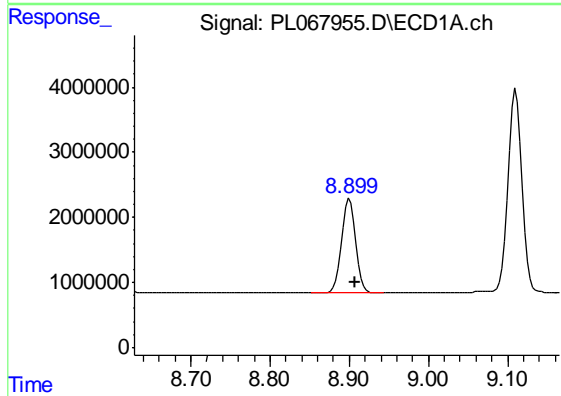
R.T.: 8.601 min  
Delta R.T.: -0.008 min  
Response: 32008684  
Conc: 50.42 ng/ml

Instrument :  
ECD\_L  
ClientSampleId :  
PSTDCCC050



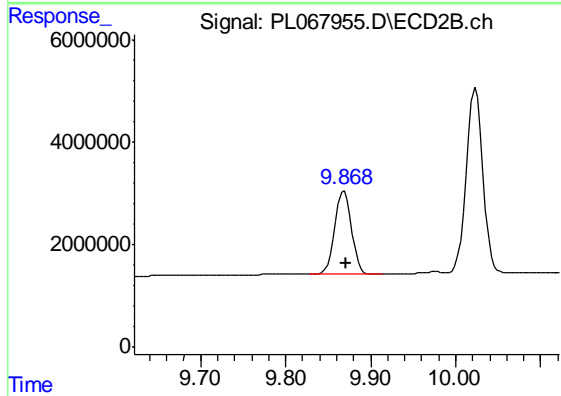
#19 Endosulfan Sulfate

R.T.: 9.526 min  
Delta R.T.: -0.004 min  
Response: 42594782  
Conc: 53.63 ng/ml



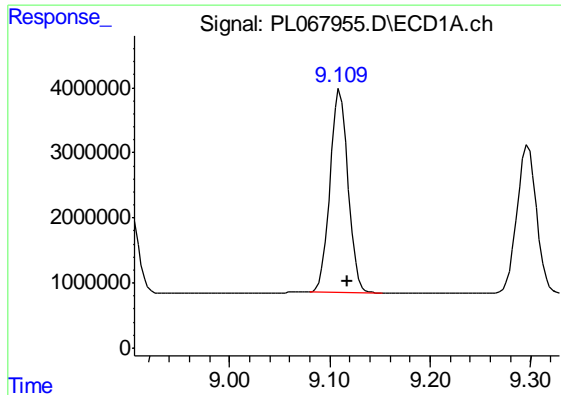
#20 Methoxychlor

R.T.: 8.900 min  
Delta R.T.: -0.007 min  
Response: 18352520  
Conc: 51.63 ng/ml



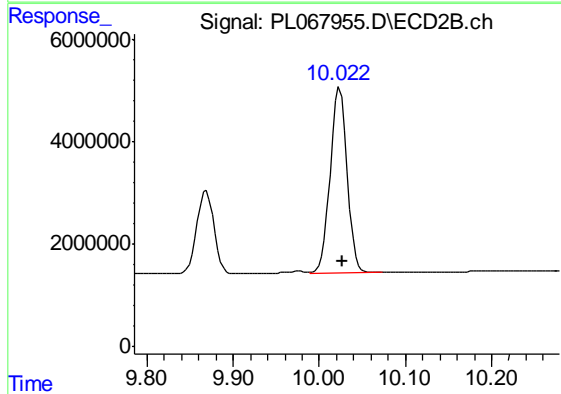
#20 Methoxychlor

R.T.: 9.869 min  
Delta R.T.: -0.003 min  
Response: 22525598  
Conc: 57.94 ng/ml

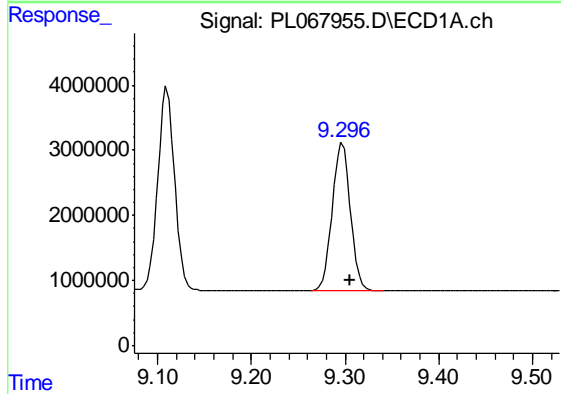


#21 Endrin ketone  
 R.T.: 9.110 min  
 Delta R.T.: -0.007 min  
 Response: 38773694  
 Conc: 50.93 ng/ml

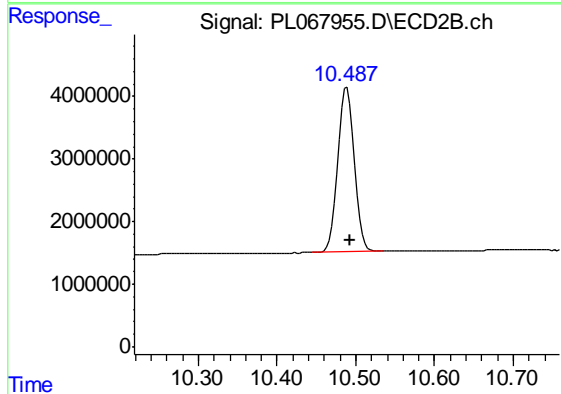
Instrument :  
 ECD\_L  
 ClientSampleId :  
 PSTDCCC050



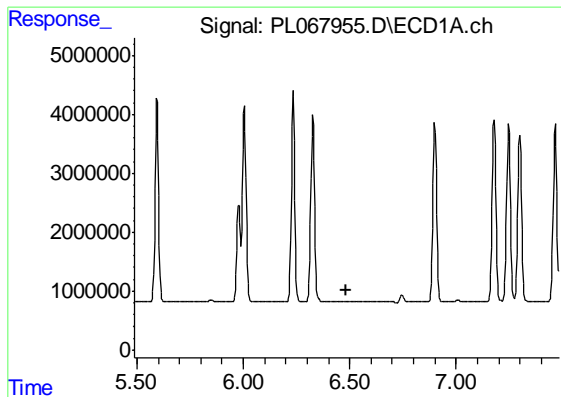
#21 Endrin ketone  
 R.T.: 10.024 min  
 Delta R.T.: -0.003 min  
 Response: 49577034  
 Conc: 54.70 ng/ml



#22 Mirex  
 R.T.: 9.297 min  
 Delta R.T.: -0.008 min  
 Response: 30736809  
 Conc: 48.81 ng/ml



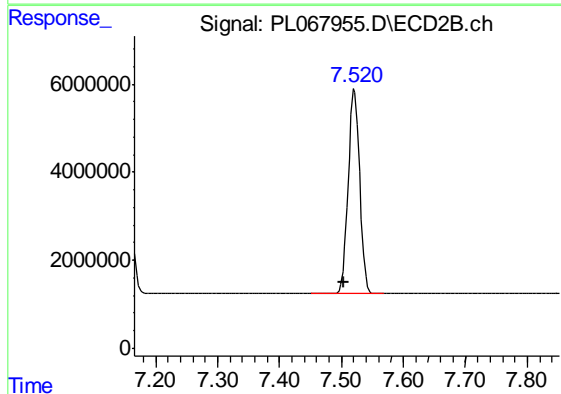
#22 Mirex  
 R.T.: 10.489 min  
 Delta R.T.: -0.004 min  
 Response: 39333807  
 Conc: 52.03 ng/ml



#24 Chlordane-2

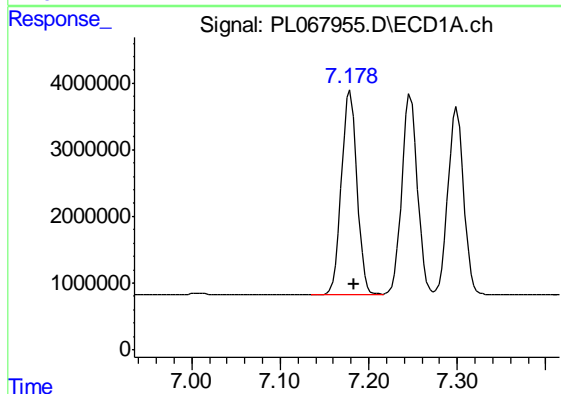
R.T.: 0.000 min  
 Exp R.T. : 6.486 min  
 Response: 0  
 Conc: N.D.

Instrument :  
 ECD\_L  
 ClientSampleId :  
 PSTDCCC050



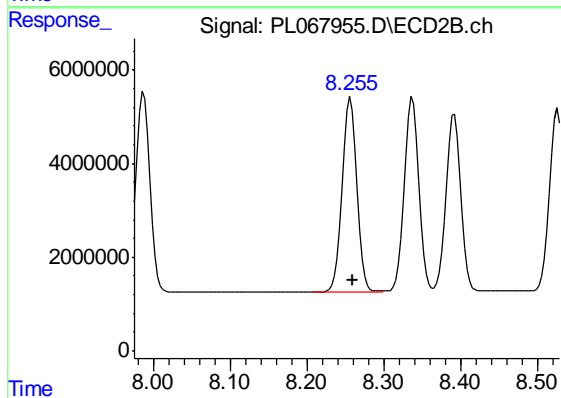
#24 Chlordane-2

R.T.: 7.521 min  
 Delta R.T.: 0.019 min  
 Response: 60238811  
 Conc: 1652.82 ng/ml



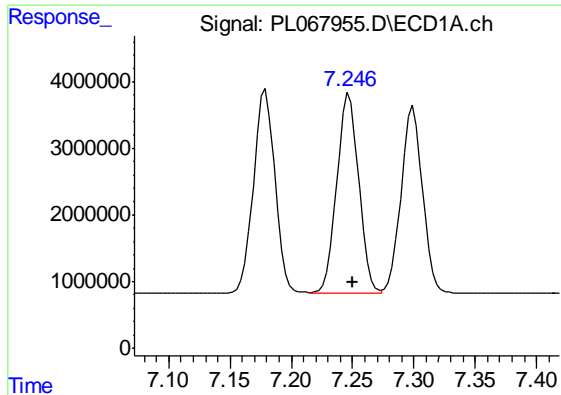
#25 Chlordane-3

R.T.: 7.179 min  
 Delta R.T.: -0.005 min  
 Response: 37374661  
 Conc: 556.25 ng/ml



#25 Chlordane-3

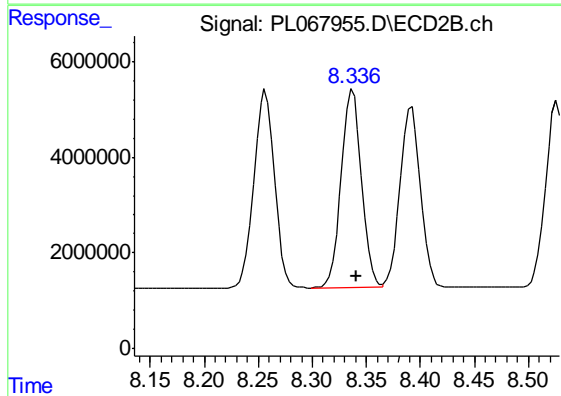
R.T.: 8.257 min  
 Delta R.T.: -0.003 min  
 Response: 54834386  
 Conc: 409.71 ng/ml



#26 Chlordane-4

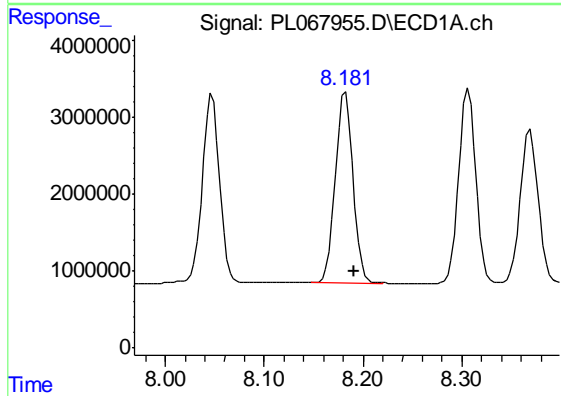
R.T.: 7.247 min  
 Delta R.T.: -0.003 min  
 Response: 37328588  
 Conc: 510.80 ng/ml

Instrument :  
 ECD\_L  
 ClientSampleId :  
 PSTDCCC050



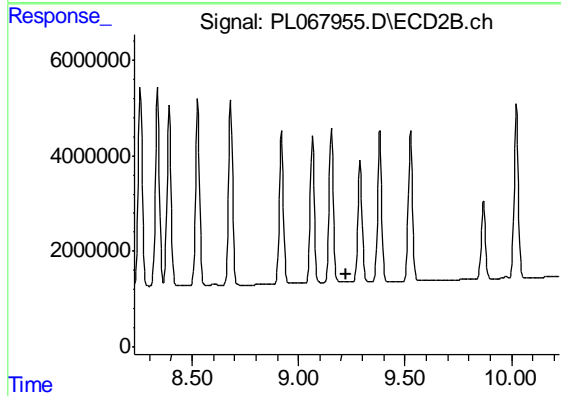
#26 Chlordane-4

R.T.: 8.338 min  
 Delta R.T.: -0.004 min  
 Response: 54495708  
 Conc: 336.18 ng/ml



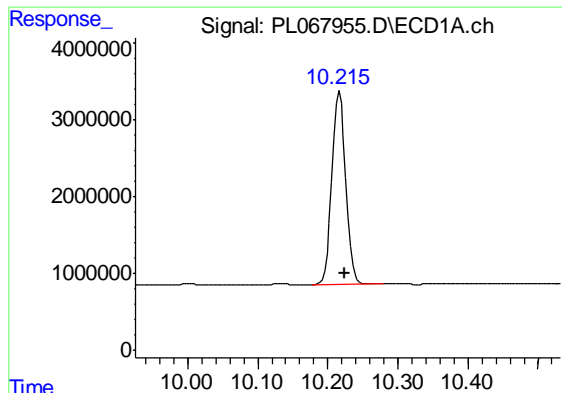
#27 Chlordane-5

R.T.: 8.182 min  
 Delta R.T.: -0.009 min  
 Response: 31184760  
 Conc: 1425.32 ng/ml



#27 Chlordane-5

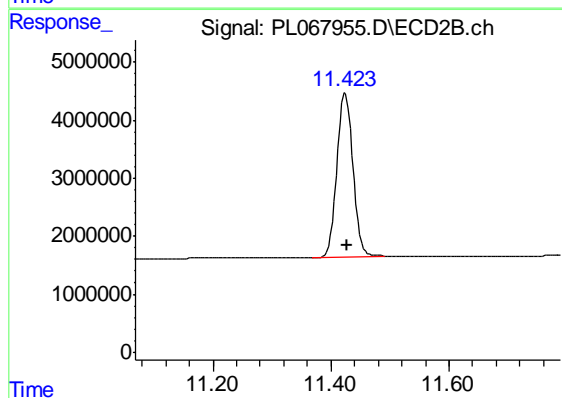
R.T.: 0.000 min  
 Exp R.T. : 9.227 min  
 Response: 0  
 Conc: N.D.



#28 Decachlorobiphenyl

R.T.: 10.217 min  
Delta R.T.: -0.008 min  
Response: 34228790  
Conc: 48.30 ng/ml

Instrument :  
ECD\_L  
ClientSampleId :  
PSTDCCC050



#28 Decachlorobiphenyl

R.T.: 11.425 min  
Delta R.T.: -0.004 min  
Response: 52942726  
Conc: 53.15 ng/ml