

Data Path : Z:\pestpcbsrv\HPCHEM1\ECD_L\Data\PL070318\
 Data File : PL037687.D
 Signal(s) : Signal #1: ECD1A.ch Signal #2: ECD2B.ch
 Acq On : 03 Jul 2018 23:06
 Operator : UA\AJ
 Sample : J3840-09
 Misc :
 ALS Vial : 37 Sample Multiplier: 1

Instrument :
 ECD_L
 ClientSampleId :

Integration File signal 1: autoint1.e
 Integration File signal 2: autoint2.e
 Quant Time: Jul 04 00:13:04 2018
 Quant Method : Z:\PESTPCBSRV\HPCHEM1\ECD_L\methods\PL062018.M
 Quant Title : GC Extractables
 QLast Update : Thu Jun 21 02:27:11 2018
 Response via : Initial Calibration
 Integrator: ChemStation

Volume Inj. : 2 µl
 Signal #1 Phase : ZB-MR1 Signal #2 Phase: ZB-MR2
 Signal #1 Info : 30M x 0.32mm x0.5 Signal #2 Info : 30M x 0.32mm x0.25µm

Compound	RT#1	RT#2	Resp#1	Resp#2	ng/ml	ng/ml

System Monitoring Compounds						
1) SA Tetrachlo...	3.334	3.936	135.3E6	51521920	17.110	18.622
28) SA Decachlor...	8.010	8.945	115.5E6	37275578	19.136	18.789

Target Compounds

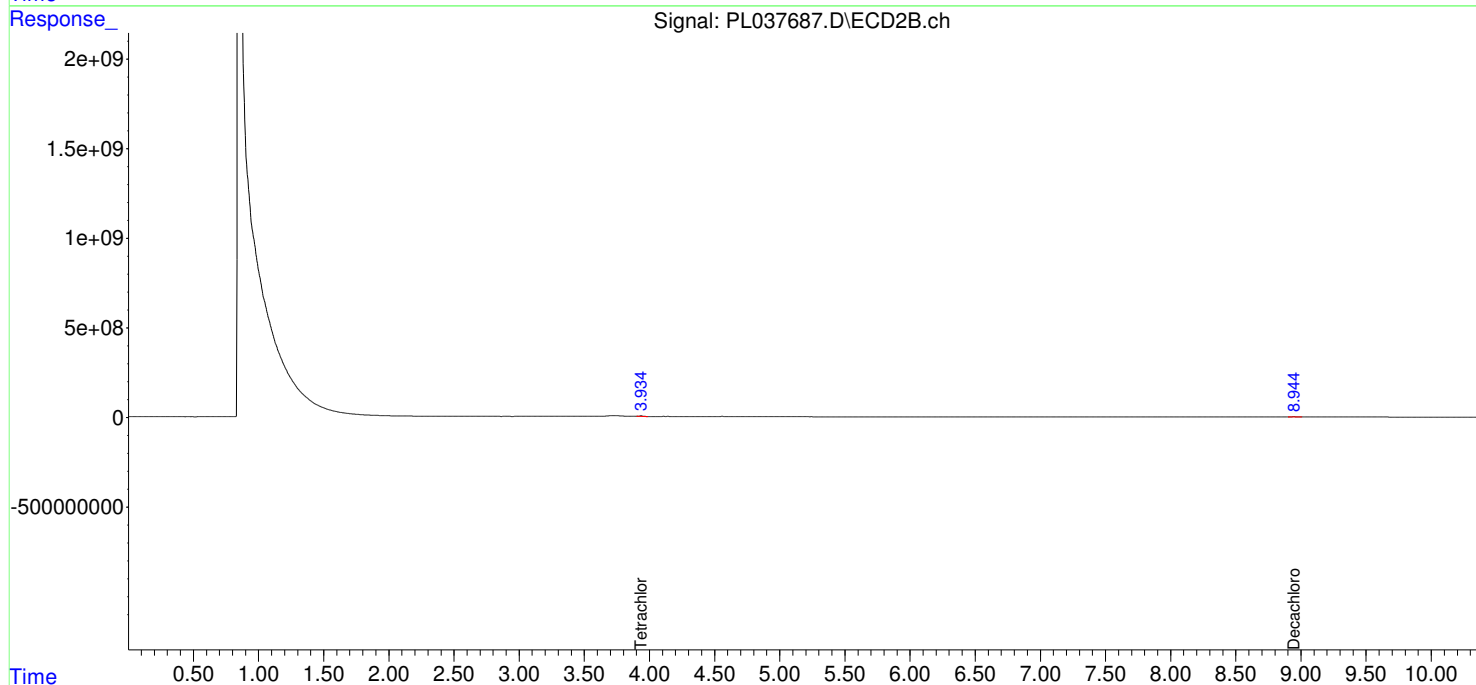
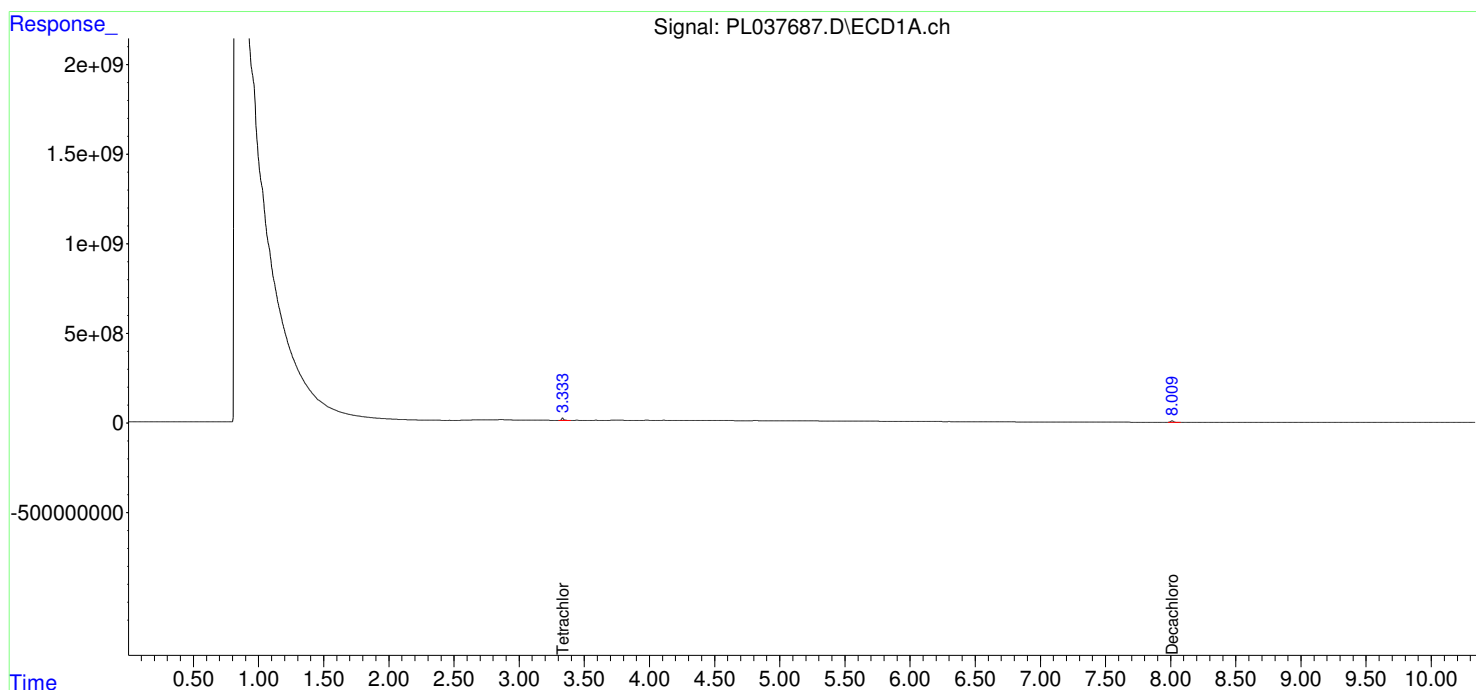
(f)=RT Delta > 1/2 Window (#)=Amounts differ by > 25% (m)=manual int.

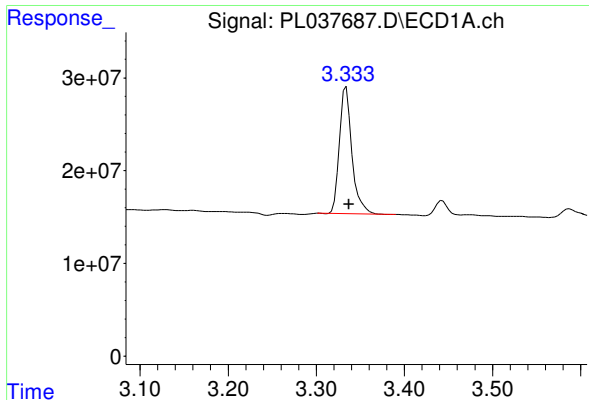
Data Path : Z:\pestpcbsrv\HPCHEM1\ECD_L\Data\PL070318\
 Data File : PL037687.D
 Signal(s) : Signal #1: ECD1A.ch Signal #2: ECD2B.ch
 Acq On : 03 Jul 2018 23:06
 Operator : UA\AJ
 Sample : J3840-09
 Misc :
 ALS Vial : 37 Sample Multiplier: 1

Instrument :
 ECD_L
 ClientSampleId :

Integration File signal 1: autoint1.e
 Integration File signal 2: autoint2.e
 Quant Time: Jul 04 00:13:04 2018
 Quant Method : Z:\PESTPCBSRV\HPCHEM1\ECD_L\methods\PL062018.M
 Quant Title : GC Extractables
 QLast Update : Thu Jun 21 02:27:11 2018
 Response via : Initial Calibration
 Integrator: ChemStation

Volume Inj. : 2 µl
 Signal #1 Phase : ZB-MR1 Signal #2 Phase: ZB-MR2
 Signal #1 Info : 30M x 0.32mm x0.5 Signal #2 Info : 30M x 0.32mm x0.25µm

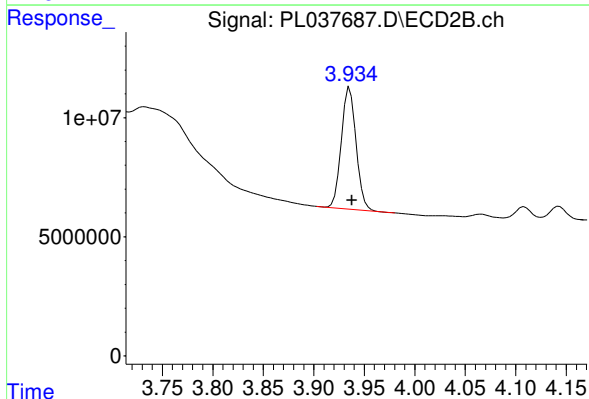




#1 Tetrachloro-m-xylene

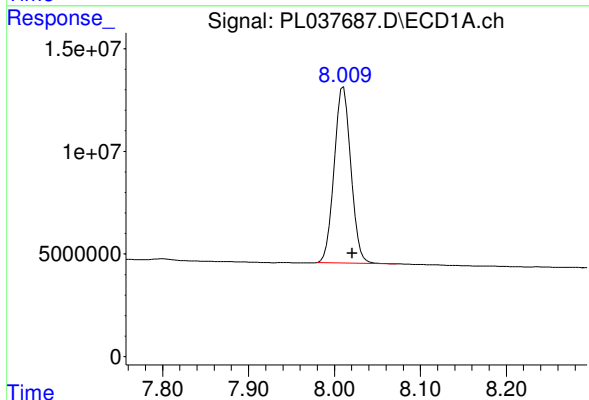
R.T.: 3.334 min
 Delta R.T.: -0.003 min
 Response: 135342980
 Conc: 17.11 ng/ml

Instrument :
 ECD_L
 ClientSampleId :



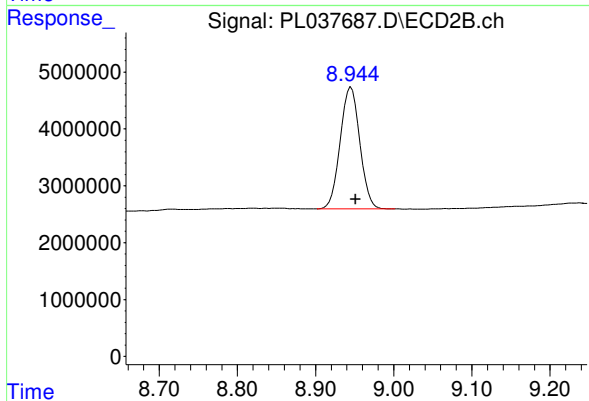
#1 Tetrachloro-m-xylene

R.T.: 3.936 min
 Delta R.T.: -0.002 min
 Response: 51521920
 Conc: 18.62 ng/ml



#28 Decachlorobiphenyl

R.T.: 8.010 min
 Delta R.T.: -0.010 min
 Response: 115468920
 Conc: 19.14 ng/ml



#28 Decachlorobiphenyl

R.T.: 8.945 min
 Delta R.T.: -0.005 min
 Response: 37275578
 Conc: 18.79 ng/ml