

Data Path : Z:\pestpcbsrv\HPCHEM1\ECD_L\Data\PL070319\
 Data File : PL050170.D
 Signal(s) : Signal #1: ECD1A.ch Signal #2: ECD2B.ch
 Acq On : 03 Jul 2019 15:40
 Operator : SM\AJ
 Sample : I.BLK
 Misc :
 ALS Vial : 2 Sample Multiplier: 1

Instrument :
 ECD_L
ClientSampled :
 I.BLK

Manual Integrations
APPROVED
 Ankita
 7/5/2019 10:01:27 AM

Integration File signal 1: autoint1.e
 Integration File signal 2: autoint2.e
 Quant Time: Jul 03 22:19:42 2019
 Quant Method : Z:\pestpcbsrv\HPCHEM1\ECD_L\methods\PL062019.M
 Quant Title : GC Extractables
 QLast Update : Fri Jun 21 02:23:20 2019
 Response via : Initial Calibration
 Integrator: ChemStation

Volume Inj. : 1 µl
 Signal #1 Phase : ZB-MR2 Signal #2 Phase: ZB-MR1
 Signal #1 Info : 30M x 0.32mm x0.2 Signal #2 Info : 30M x 0.32mm x0.5µm

Compound	RT#1	RT#2	Resp#1	Resp#2	ng/ml	ng/ml

System Monitoring Compounds						
1) SA Tetrachlo...	3.320	3.933	224.9E6	58844672	19.938	19.219
28) SA Decachlor...	7.985	8.965	168.7E6	50509713	13.280	15.046m

Target Compounds

(f)=RT Delta > 1/2 Window (#)=Amounts differ by > 25% (m)=manual int.

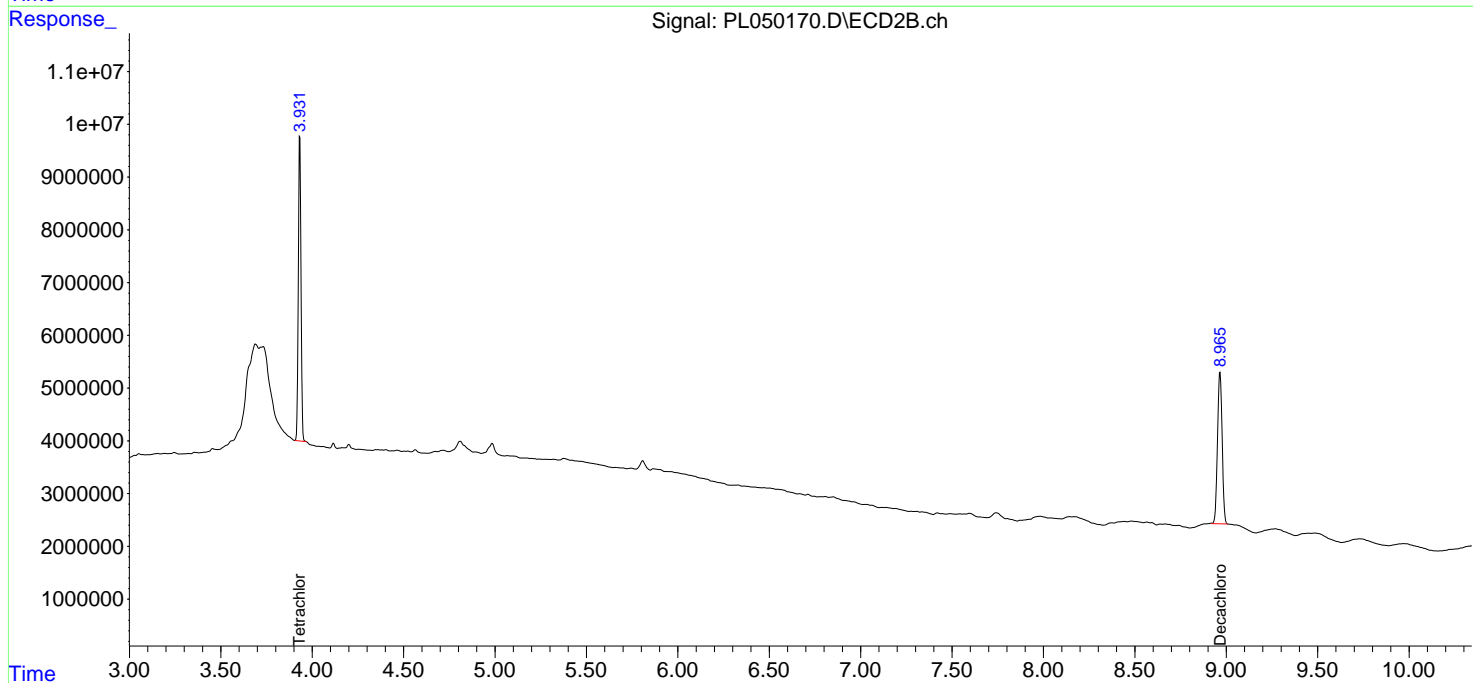
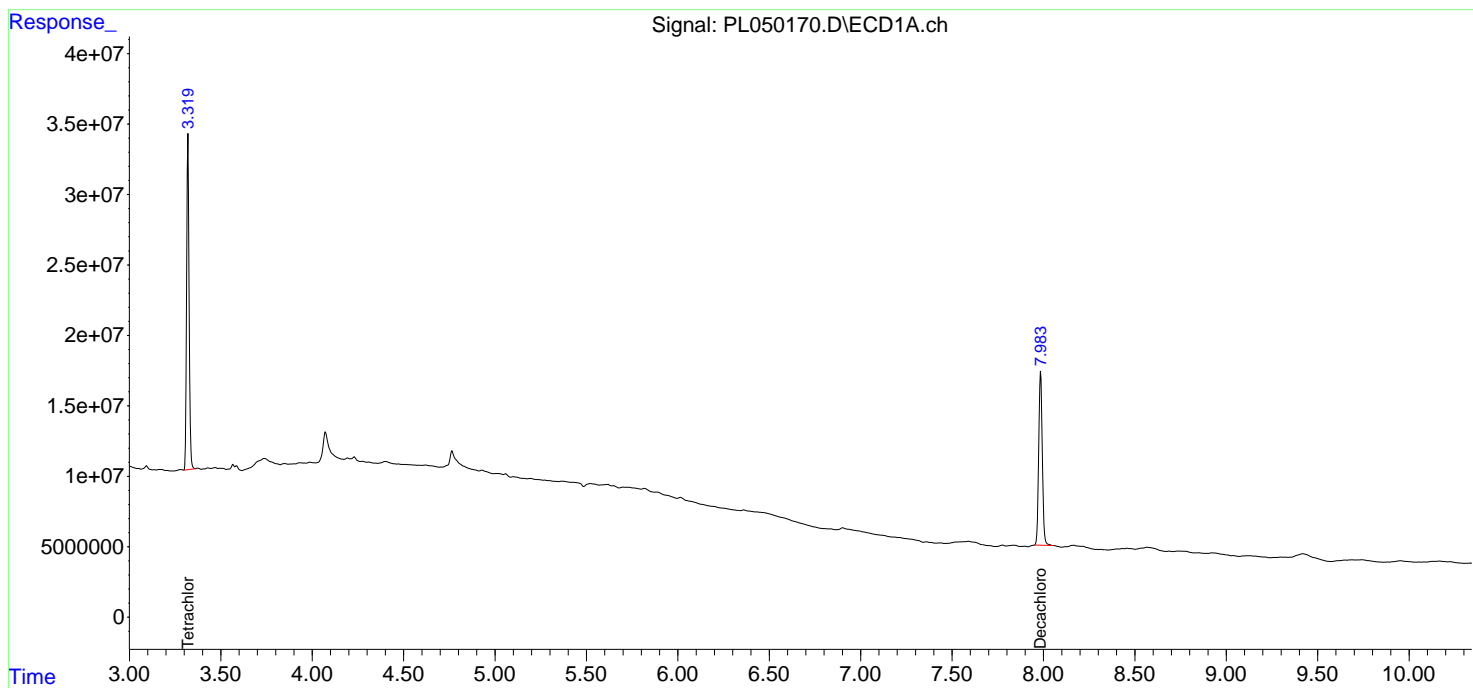
Data Path : Z:\pestpcbsrv\HPCHEM1\ECD_L\Data\PL070319\
 Data File : PL050170.D
 Signal(s) : Signal #1: ECD1A.ch Signal #2: ECD2B.ch
 Acq On : 03 Jul 2019 15:40
 Operator : SM\AJ
 Sample : I.BLK
 Misc :
 ALS Vial : 2 Sample Multiplier: 1

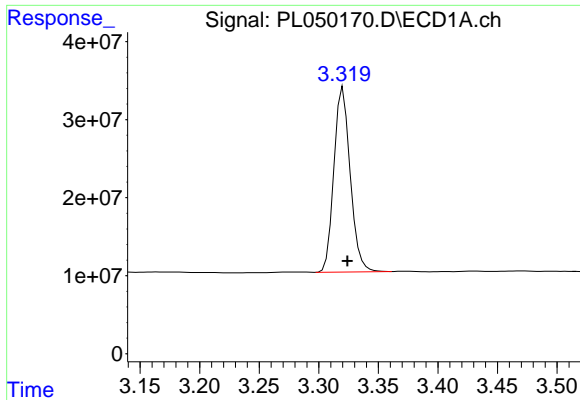
Instrument :
 ECD_L
ClientSampled :
 I.BLK

Manual Integrations
APPROVED
 Ankita
 7/5/2019 10:01:27 AM

Integration File signal 1: autoint1.e
 Integration File signal 2: autoint2.e
 Quant Time: Jul 03 22:19:42 2019
 Quant Method : Z:\pestpcbsrv\HPCHEM1\ECD_L\methods\PL062019.M
 Quant Title : GC Extractables
 QLast Update : Fri Jun 21 02:23:20 2019
 Response via : Initial Calibration
 Integrator: ChemStation

Volume Inj. : 1 µl
 Signal #1 Phase : ZB-MR2 Signal #2 Phase: ZB-MR1
 Signal #1 Info : 30M x 0.32mm x0.2 Signal #2 Info : 30M x 0.32mm x0.5µm

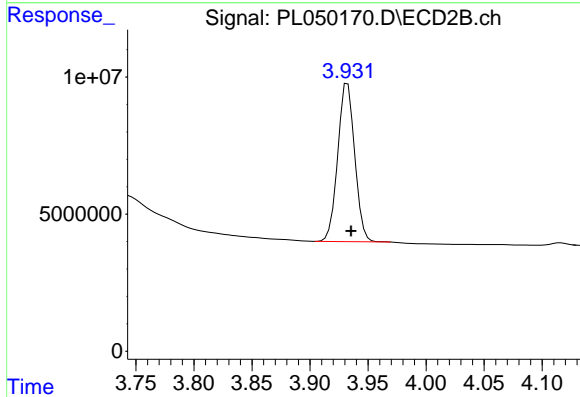




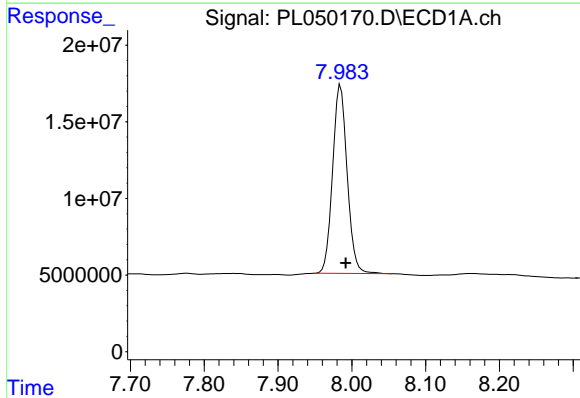
#1 Tetrachloro-m-xylene
 R.T.: 3.320 min
 Delta R.T.: -0.004 min
 Response: 224858442
 Conc: 19.94 ng/ml

Instrument :
 ECD_L
 ClientSampled :
 I.BLK

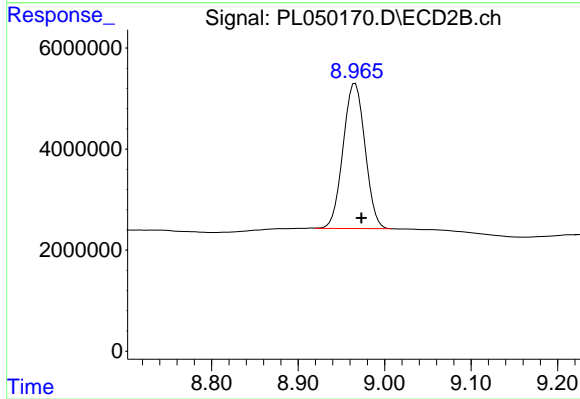
Manual Integrations
 APPROVED
 Ankita
 7/5/2019 10:01:27 AM



#1 Tetrachloro-m-xylene
 R.T.: 3.933 min
 Delta R.T.: -0.003 min
 Response: 58844672
 Conc: 19.22 ng/ml



#28 Decachlorobiphenyl
 R.T.: 7.985 min
 Delta R.T.: -0.007 min
 Response: 168741879
 Conc: 13.28 ng/ml



#28 Decachlorobiphenyl
 R.T.: 8.965 min
 Delta R.T.: -0.008 min
 Response: 50509713
 Conc: 15.05 ng/ml m