

Data Path : Z:\pestpcbsrv\HPCHEM1\ECD_L\Data\PL070621\
 Data File : PL067957.D
 Signal(s) : Signal #1: ECD1A.ch Signal #2: ECD2B.ch
 Acq On : 06 Jul 2021 08:56
 Operator : AR\AJ
 Sample : I.BLK
 Misc :
 ALS Vial : 2 Sample Multiplier: 1

Instrument :
 ECD_L
 ClientSampleId :

Integration File signal 1: autoint1.e
 Integration File signal 2: autoint2.e
 Quant Time: Jul 06 13:05:34 2021
 Quant Method : Z:\pestpcbsrv\HPCHEM1\ECD_L\methods\PL061021.M
 Quant Title : GC Extractables
 QLast Update : Fri Jun 11 02:00:12 2021
 Response via : Initial Calibration
 Integrator: ChemStation

Volume Inj. : 1 µl
 Signal #1 Phase : ZB-MR2 Signal #2 Phase: ZB-MR1
 Signal #1 Info : 30M x 0.32mm x0.2 Signal #2 Info : 30M x 0.32mm x0.5µm

Compound	RT#1	RT#2	Resp#1	Resp#2	ng/ml	ng/ml

System Monitoring Compounds						
1) SA Tetrachlo...	4.478	5.526	10848886	16568849	19.733	17.575
28) SA Decachlor...	10.219	11.424	13410334	16605947	18.923	16.672
Target Compounds						
2) A alpha-BHC	5.198f	0.000	568791	0	0.773	N.D. #
4) MA Heptachlor	5.987f	0.000	305649	0	0.405	N.D. #
6) B beta-BHC	5.987	0.000	305649	0	0.854	N.D. #

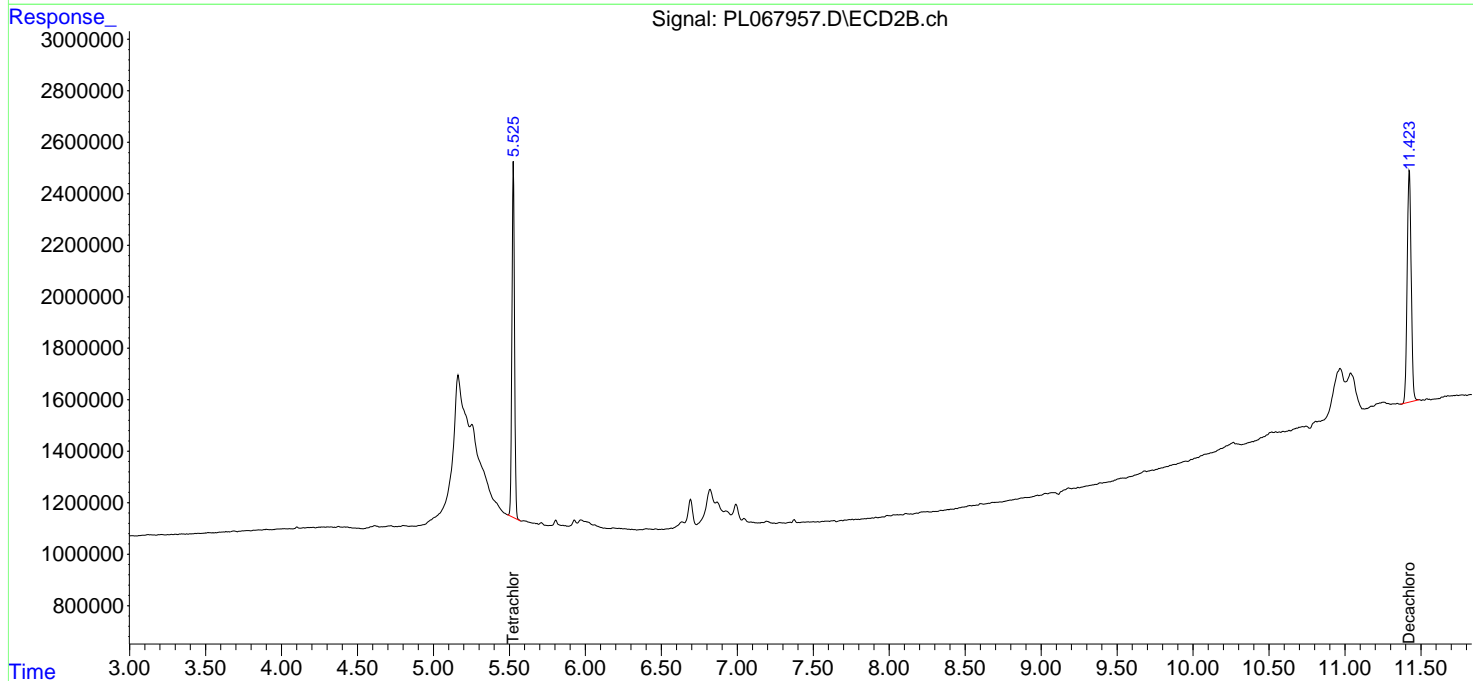
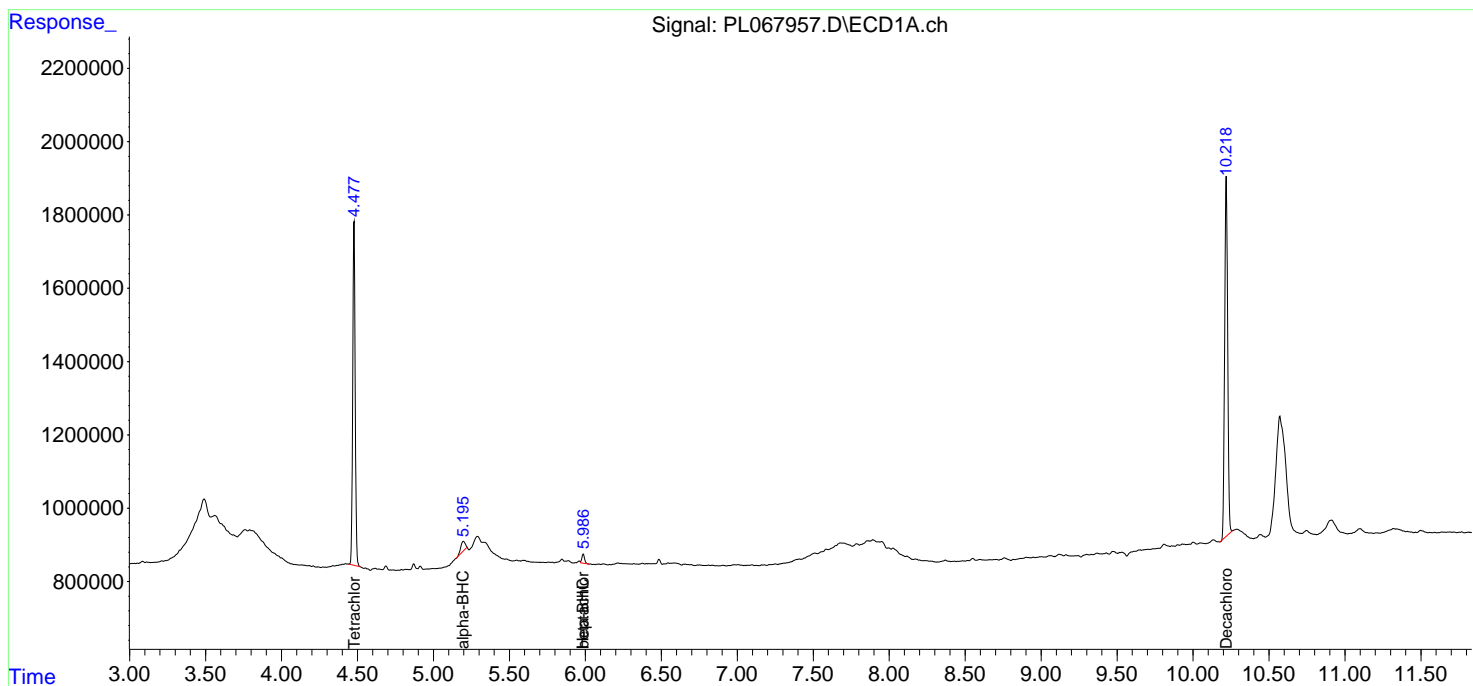
(f)=RT Delta > 1/2 Window (#)=Amounts differ by > 25% (m)=manual int.

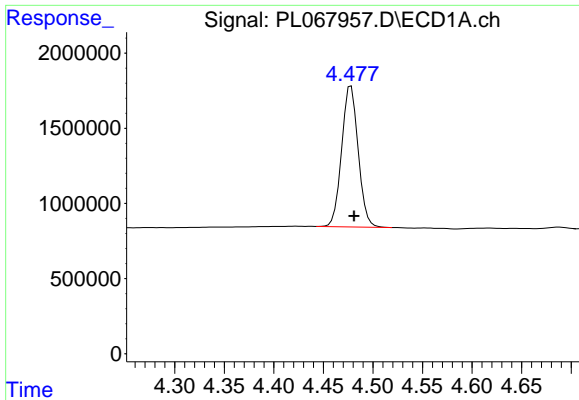
Data Path : Z:\pestpcbsrv\HPCHEM1\ECD_L\Data\PL070621\
 Data File : PL067957.D
 Signal(s) : Signal #1: ECD1A.ch Signal #2: ECD2B.ch
 Acq On : 06 Jul 2021 08:56
 Operator : AR\AJ
 Sample : I.BLK
 Misc :
 ALS Vial : 2 Sample Multiplier: 1

Instrument :
 ECD_L
 ClientSampled :

Integration File signal 1: autoint1.e
 Integration File signal 2: autoint2.e
 Quant Time: Jul 06 13:05:34 2021
 Quant Method : Z:\pestpcbsrv\HPCHEM1\ECD_L\methods\PL061021.M
 Quant Title : GC Extractables
 QLast Update : Fri Jun 11 02:00:12 2021
 Response via : Initial Calibration
 Integrator: ChemStation

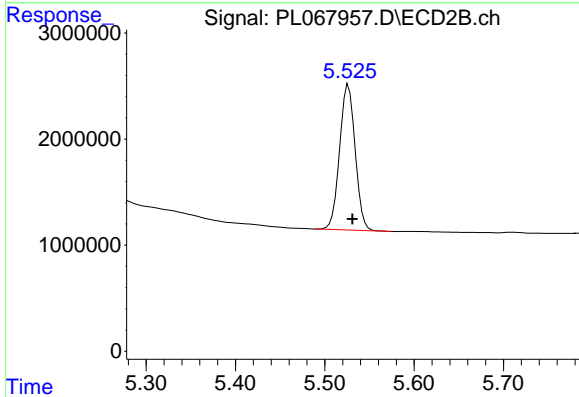
Volume Inj. : 1 µl
 Signal #1 Phase : ZB-MR2 Signal #2 Phase: ZB-MR1
 Signal #1 Info : 30M x 0.32mm x0.2 Signal #2 Info : 30M x 0.32mm x0.5µm



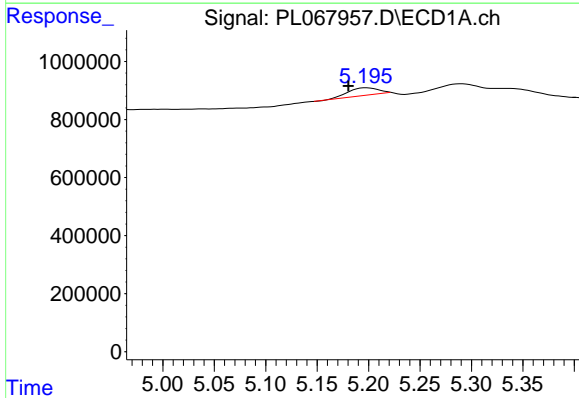


#1 Tetrachloro-m-xylene
 R.T.: 4.478 min
 Delta R.T.: -0.003 min
 Response: 10848886
 Conc: 19.73 ng/ml

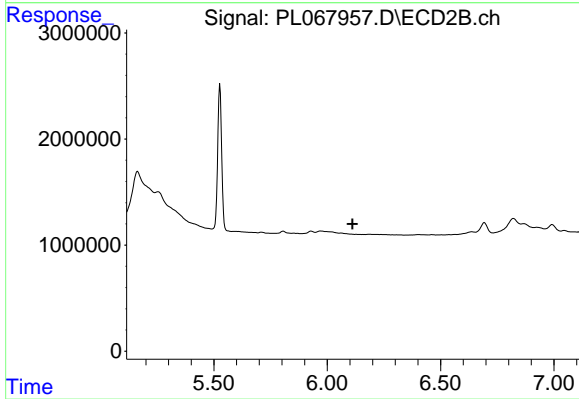
Instrument :
 ECD_L
 ClientSampled :



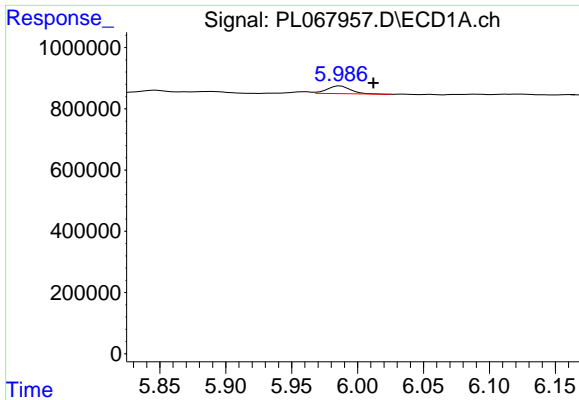
#1 Tetrachloro-m-xylene
 R.T.: 5.526 min
 Delta R.T.: -0.005 min
 Response: 16568849
 Conc: 17.58 ng/ml



#2 alpha-BHC
 R.T.: 5.198 min
 Delta R.T.: 0.017 min
 Response: 568791
 Conc: 0.77 ng/ml

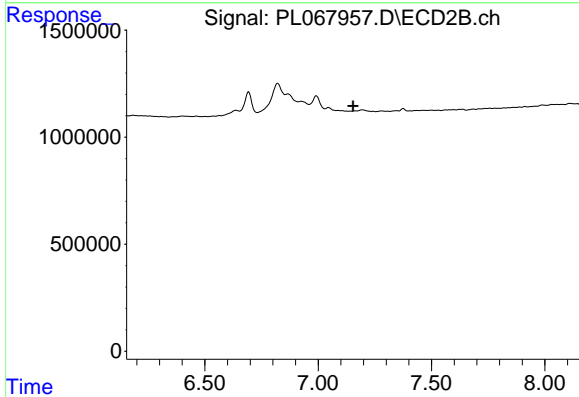


#2 alpha-BHC
 R.T.: 0.000 min
 Exp R.T. : 6.112 min
 Response: 0
 Conc: N.D.

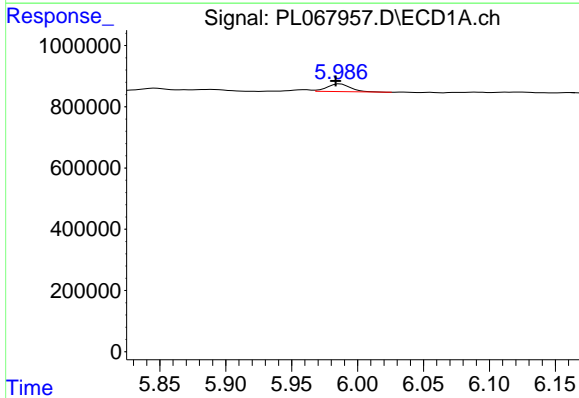


#4 Heptachlor
 R.T.: 5.987 min
 Delta R.T.: -0.025 min
 Response: 305649
 Conc: 0.41 ng/ml

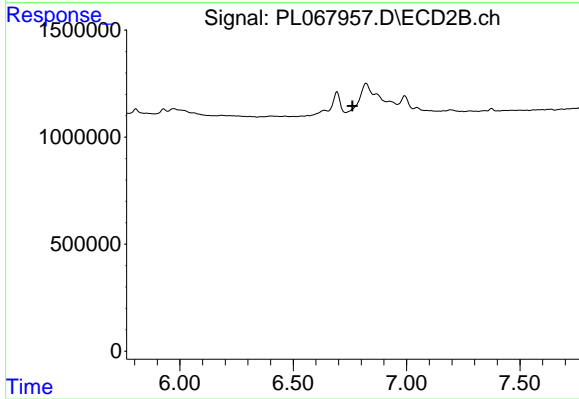
Instrument :
 ECD_L
 ClientSampled :



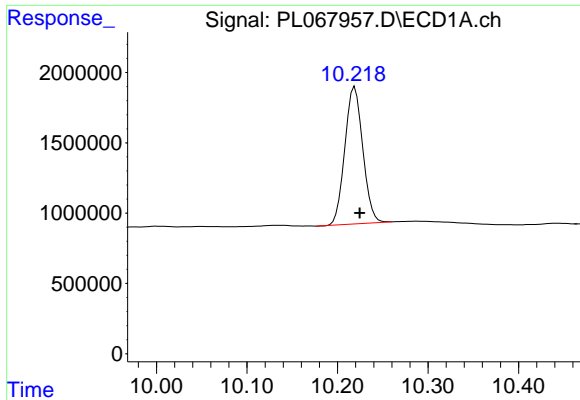
#4 Heptachlor
 R.T.: 0.000 min
 Exp R.T. : 7.155 min
 Response: 0
 Conc: N.D.



#6 beta-BHC
 R.T.: 5.987 min
 Delta R.T.: 0.004 min
 Response: 305649
 Conc: 0.85 ng/ml



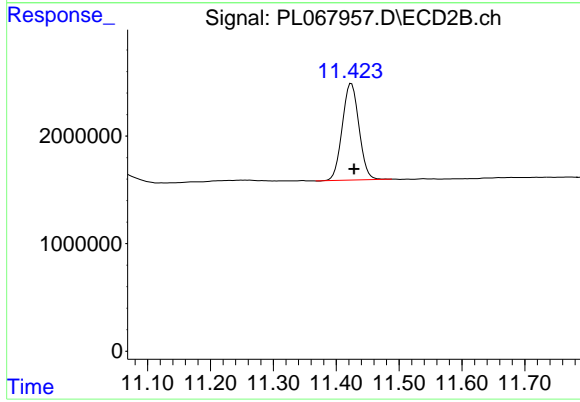
#6 beta-BHC
 R.T.: 0.000 min
 Exp R.T. : 6.762 min
 Response: 0
 Conc: N.D.



#28 Decachlorobiphenyl

R.T.: 10.219 min
Delta R.T.: -0.005 min
Response: 13410334
Conc: 18.92 ng/ml

Instrument :
ECD_L
ClientSampleId :



#28 Decachlorobiphenyl

R.T.: 11.424 min
Delta R.T.: -0.004 min
Response: 16605947
Conc: 16.67 ng/ml