

Data Path : Z:\pestpcbsrv\HPCHEM1\ECD\_L\Data\PL070621\  
 Data File : PL067968.D  
 Signal(s) : Signal #1: ECD1A.ch Signal #2: ECD2B.ch  
 Acq On : 06 Jul 2021 14:42  
 Operator : AR\AJ  
 Sample : M2926-04  
 Misc :  
 ALS Vial : 11 Sample Multiplier: 1

Instrument :  
 ECD\_L  
 ClientSampleId :

Integration File signal 1: autoint1.e  
 Integration File signal 2: autoint2.e  
 Quant Time: Jul 06 15:58:08 2021  
 Quant Method : Z:\pestpcbsrv\HPCHEM1\ECD\_L\methods\PL061021.M  
 Quant Title : GC Extractables  
 QLast Update : Fri Jun 11 02:00:12 2021  
 Response via : Initial Calibration  
 Integrator: ChemStation

Volume Inj. : 1 µl  
 Signal #1 Phase : ZB-MR1 Signal #2 Phase: ZB-MR1  
 Signal #1 Info : 30M x 0.32mm x0.2 Signal #2 Info : 30M x 0.32mm x0.5µm

	Compound	RT#1	RT#2	Resp#1	Resp#2	ng/ml	ng/ml
-----							
System Monitoring Compounds							
1)	SA Tetrachlo...	4.476	5.527	10539952	18059814	19.171	19.157
28)	SA Decachlor...	10.217	11.423	14167831	18089628	19.992	18.161
Target Compounds							
9)	A Endosulfan I	7.323f	0.000	256141	0	0.381	N.D. #
10)	B gamma-Chl...	7.170f	0.000	168700	0	0.233	N.D. #
12)	B 4,4'-DDE	7.466	8.526	266699	578951	0.401	0.639 #
13)	MA Dieldrin	7.599	0.000	269754	0	0.385	N.D. #
15)	B Endosulfa...	8.177	9.132f	447754	242582	0.727	0.304 #
16)	A 4,4'-DDD	8.052	9.066	306381	316229	0.527	0.445
17)	MA 4,4'-DDT	8.298f	0.000	296376	0	0.509	N.D. #
19)	B Endosulfa...	8.587f	0.000	1117794	0	1.761	N.D. #
21)	B Endrin ke...	9.121	9.999f	-17203	701841	N.D.	0.774
22)	Mirex	9.299	0.000	244443	0	0.388	N.D. #
25)	Chlordane-3	7.170	0.000	168700	0	2.511	N.D. #
27)	Chlordane-5	8.177	0.000	447754	0	20.465	N.D. #

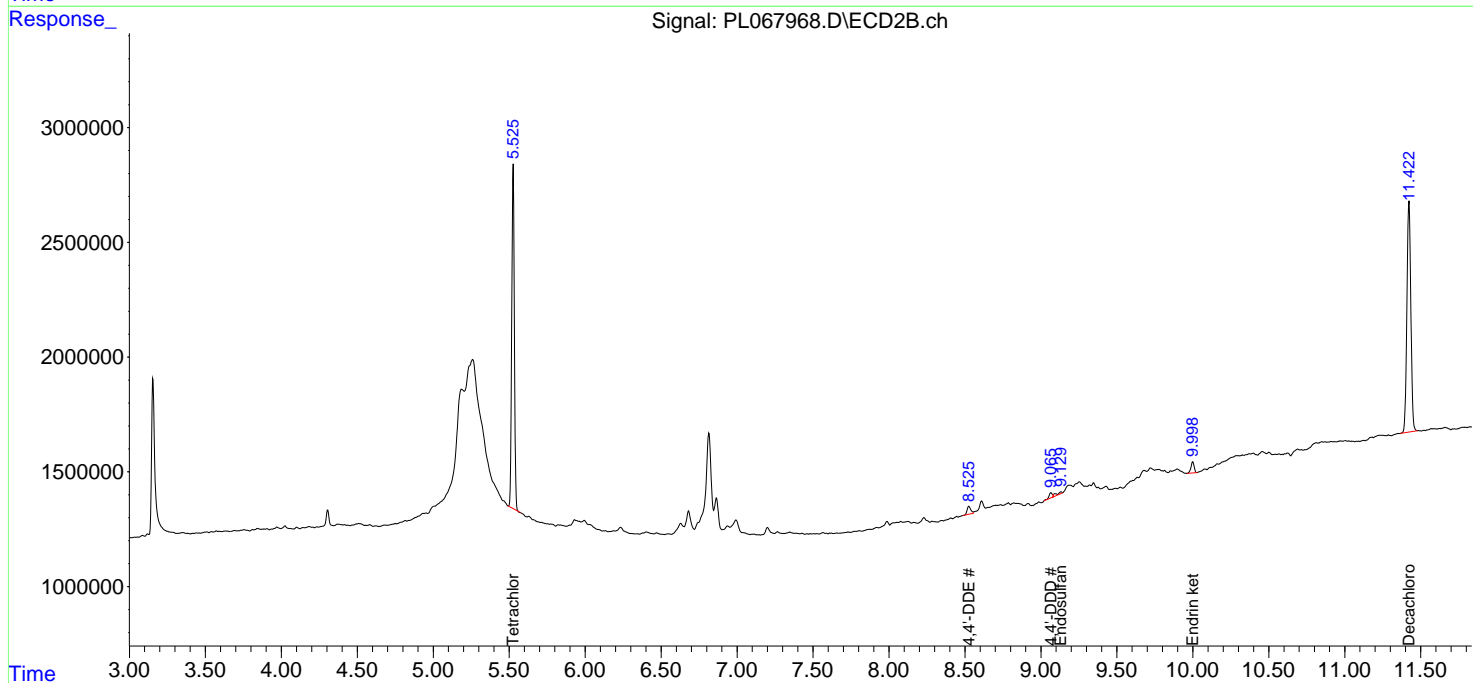
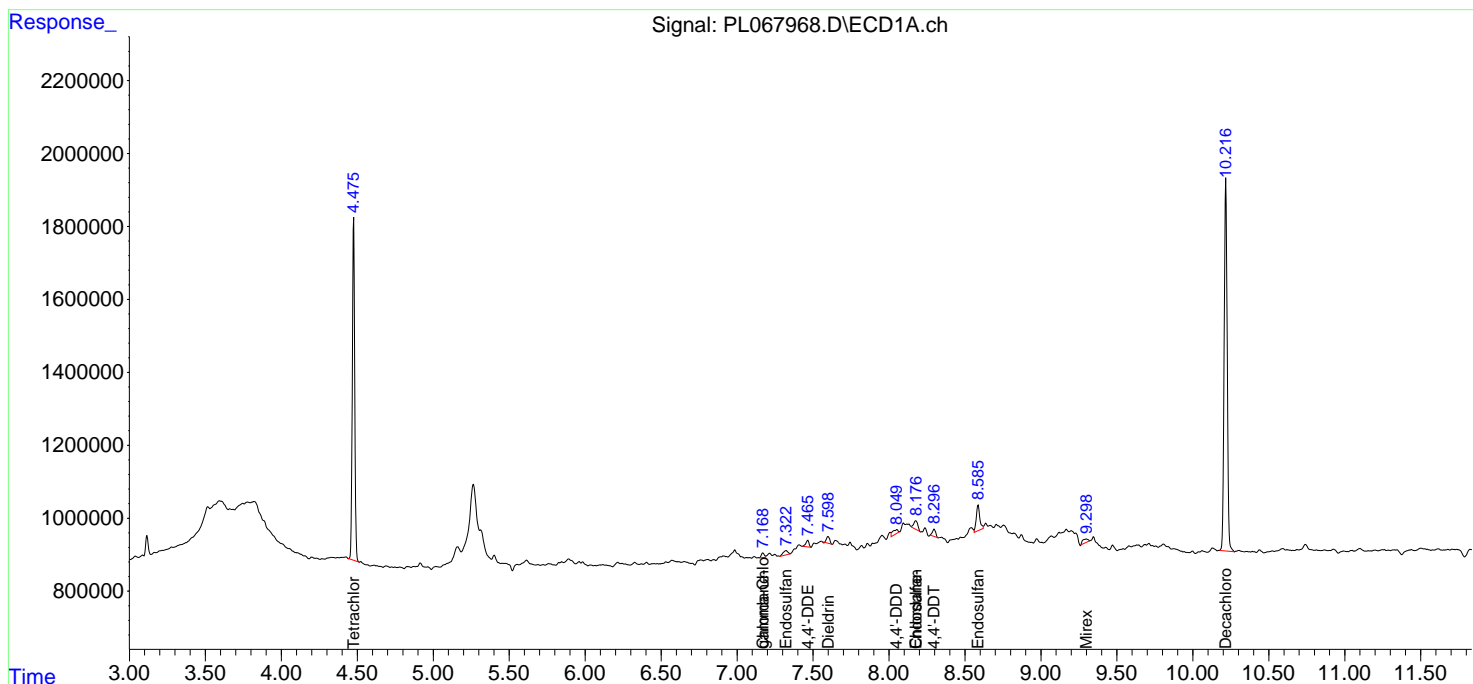
(f)=RT Delta > 1/2 Window (#)=Amounts differ by > 25% (m)=manual int.

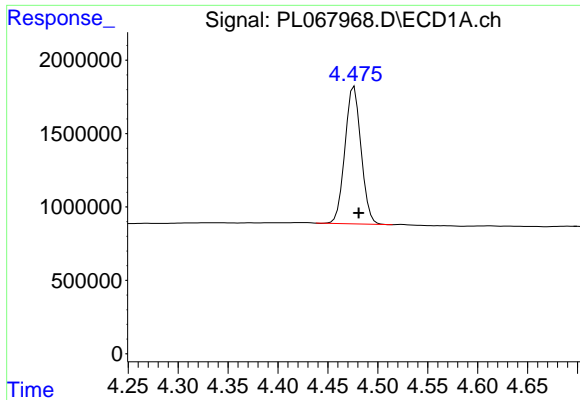
Data Path : Z:\pestpcbsrv\HPCHEM1\ECD\_L\Data\PL070621\  
 Data File : PL067968.D  
 Signal(s) : Signal #1: ECD1A.ch Signal #2: ECD2B.ch  
 Acq On : 06 Jul 2021 14:42  
 Operator : AR\AJ  
 Sample : M2926-04  
 Misc :  
 ALS Vial : 11 Sample Multiplier: 1

Instrument :  
 ECD\_L  
 ClientSampled :

Integration File signal 1: autoint1.e  
 Integration File signal 2: autoint2.e  
 Quant Time: Jul 06 15:58:08 2021  
 Quant Method : Z:\pestpcbsrv\HPCHEM1\ECD\_L\methods\PL061021.M  
 Quant Title : GC Extractables  
 QLast Update : Fri Jun 11 02:00:12 2021  
 Response via : Initial Calibration  
 Integrator: ChemStation

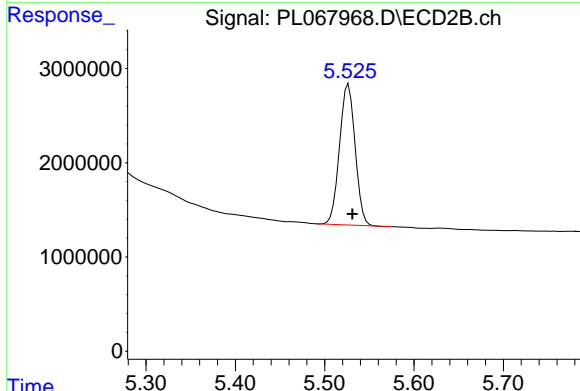
Volume Inj. : 1 µl  
 Signal #1 Phase : ZB-MR2 Signal #2 Phase: ZB-MR1  
 Signal #1 Info : 30M x 0.32mm x0.2 Signal #2 Info : 30M x 0.32mm x0.5µm



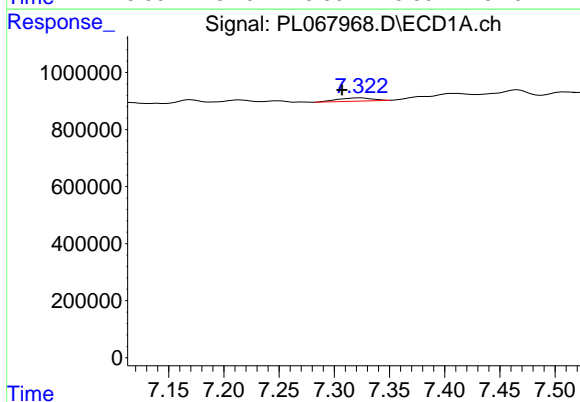


#1 Tetrachloro-m-xylene  
 R.T.: 4.476 min  
 Delta R.T.: -0.005 min  
 Response: 10539952  
 Conc: 19.17 ng/ml

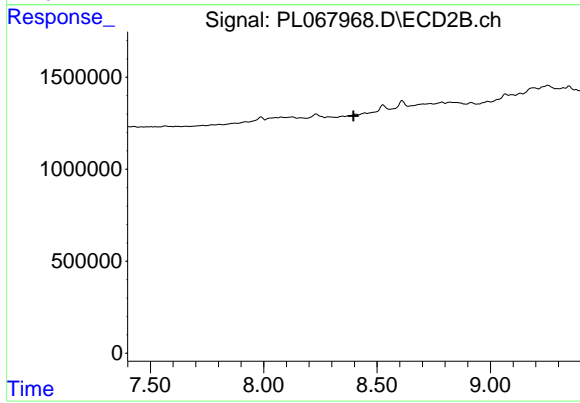
Instrument :  
 ECD\_L  
 ClientSampled :



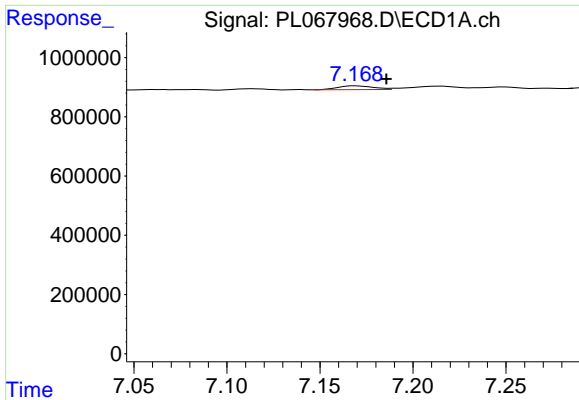
#1 Tetrachloro-m-xylene  
 R.T.: 5.527 min  
 Delta R.T.: -0.004 min  
 Response: 18059814  
 Conc: 19.16 ng/ml



#9 Endosulfan I  
 R.T.: 7.323 min  
 Delta R.T.: 0.016 min  
 Response: 256141  
 Conc: 0.38 ng/ml

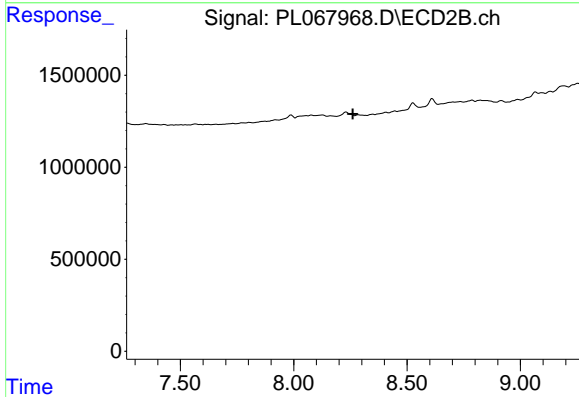


#9 Endosulfan I  
 R.T.: 0.000 min  
 Exp R.T. : 8.397 min  
 Response: 0  
 Conc: N.D.

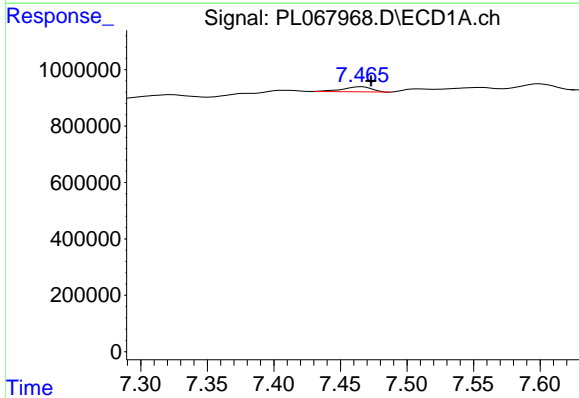


#10 gamma-Chlordane  
 R.T.: 7.170 min  
 Delta R.T.: -0.016 min  
 Response: 168700  
 Conc: 0.23 ng/ml

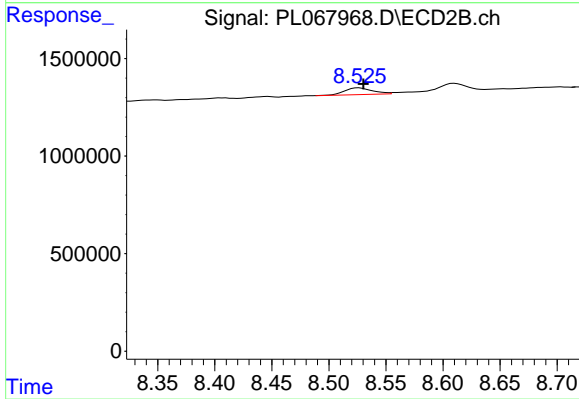
Instrument :  
 ECD\_L  
 ClientSampleId :



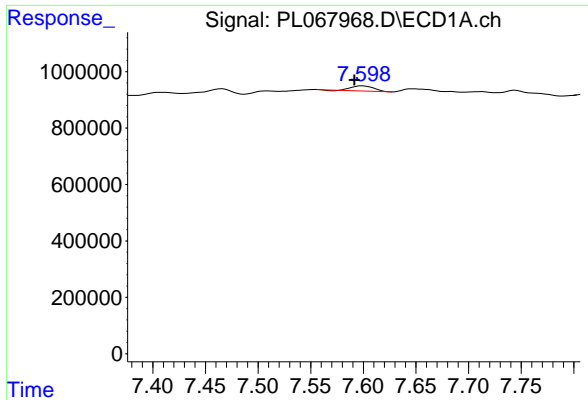
#10 gamma-Chlordane  
 R.T.: 0.000 min  
 Exp R.T. : 8.261 min  
 Response: 0  
 Conc: N.D.



#12 4,4'-DDE  
 R.T.: 7.466 min  
 Delta R.T.: -0.007 min  
 Response: 266699  
 Conc: 0.40 ng/ml

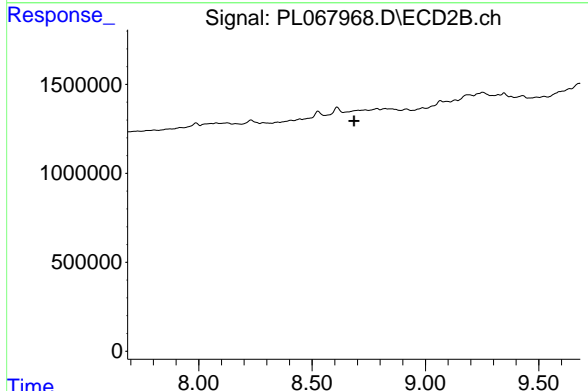


#12 4,4'-DDE  
 R.T.: 8.526 min  
 Delta R.T.: -0.004 min  
 Response: 578951  
 Conc: 0.64 ng/ml

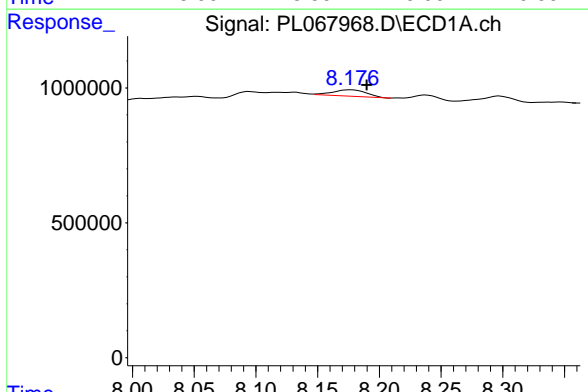


#13 Dieldrin  
 R.T.: 7.599 min  
 Delta R.T.: 0.008 min  
 Response: 269754  
 Conc: 0.38 ng/ml

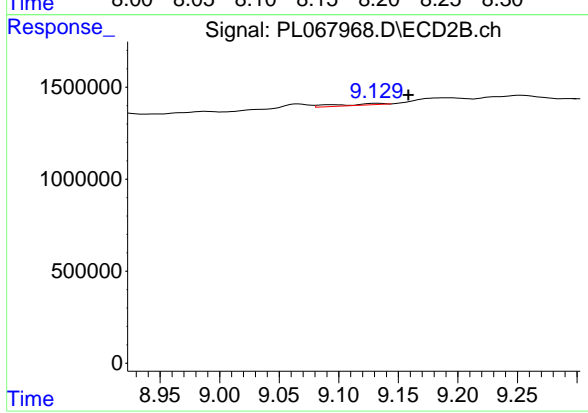
Instrument :  
 ECD\_L  
 ClientSampled :



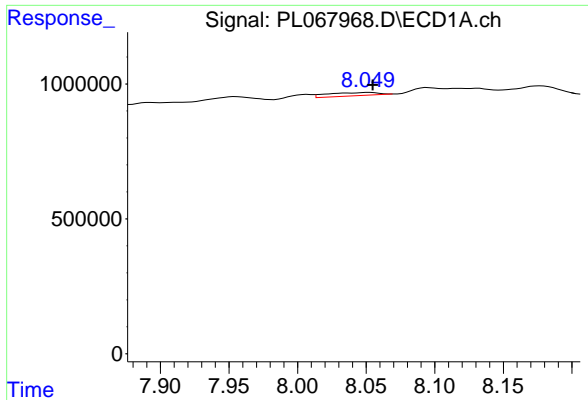
#13 Dieldrin  
 R.T.: 0.000 min  
 Exp R.T. : 8.685 min  
 Response: 0  
 Conc: N.D.



#15 Endosulfan II  
 R.T.: 8.177 min  
 Delta R.T.: -0.013 min  
 Response: 447754  
 Conc: 0.73 ng/ml

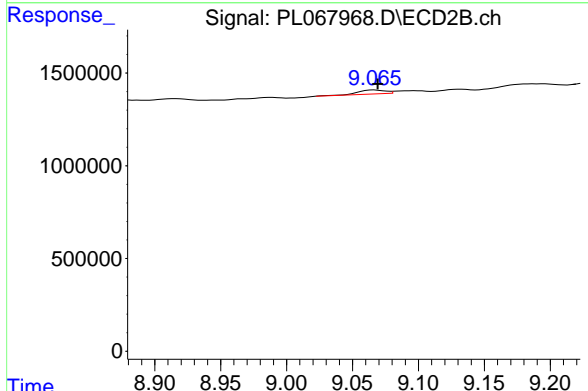


#15 Endosulfan II  
 R.T.: 9.132 min  
 Delta R.T.: -0.026 min  
 Response: 242582  
 Conc: 0.30 ng/ml

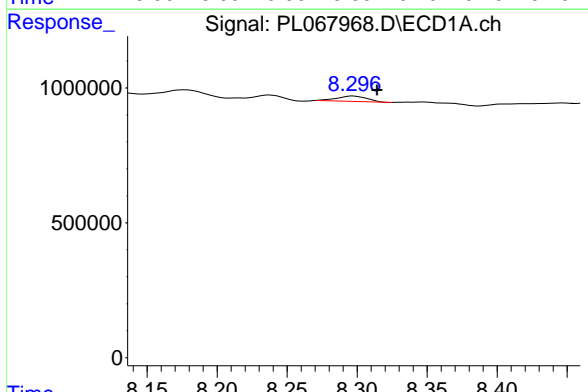


#16 4,4'-DDD  
 R.T.: 8.052 min  
 Delta R.T.: -0.003 min  
 Response: 306381  
 Conc: 0.53 ng/ml

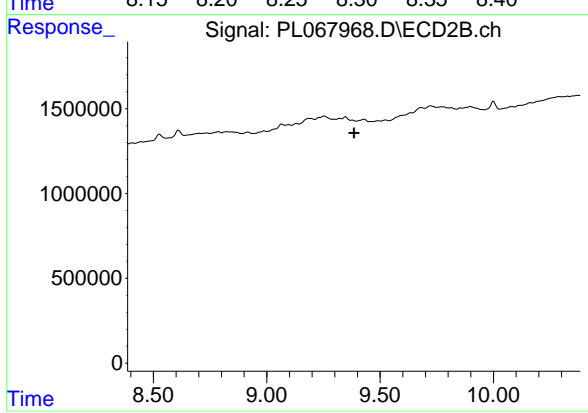
Instrument :  
 ECD\_L  
 ClientSampled :



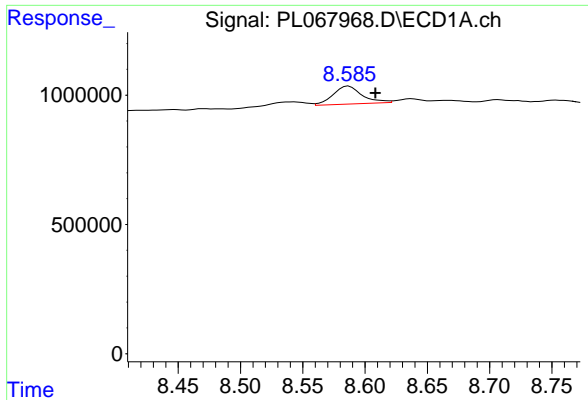
#16 4,4'-DDD  
 R.T.: 9.066 min  
 Delta R.T.: -0.003 min  
 Response: 316229  
 Conc: 0.44 ng/ml



#17 4,4'-DDT  
 R.T.: 8.298 min  
 Delta R.T.: -0.017 min  
 Response: 296376  
 Conc: 0.51 ng/ml

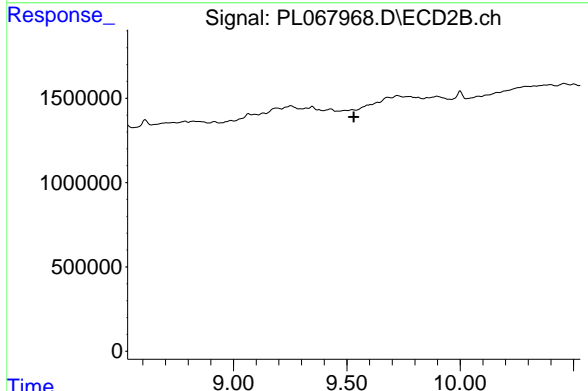


#17 4,4'-DDT  
 R.T.: 0.000 min  
 Exp R.T. : 9.386 min  
 Response: 0  
 Conc: N.D.

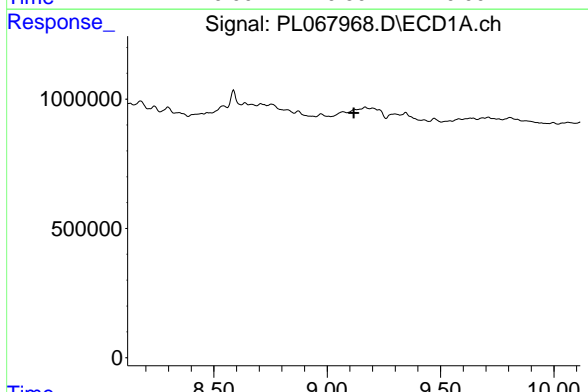


#19 Endosulfan Sulfate  
 R.T.: 8.587 min  
 Delta R.T.: -0.022 min  
 Response: 1117794  
 Conc: 1.76 ng/ml

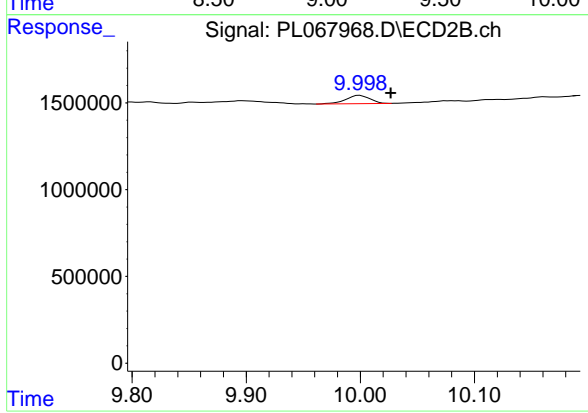
Instrument :  
 ECD\_L  
 ClientSampleId :



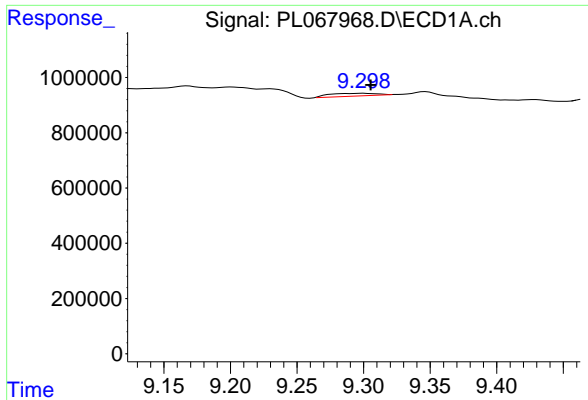
#19 Endosulfan Sulfate  
 R.T.: 0.000 min  
 Exp R.T. : 9.530 min  
 Response: 0  
 Conc: N.D.



#21 Endrin ketone  
 R.T.: 9.121 min  
 Delta R.T.: 0.003 min  
 Response: -17203  
 Conc: N.D.

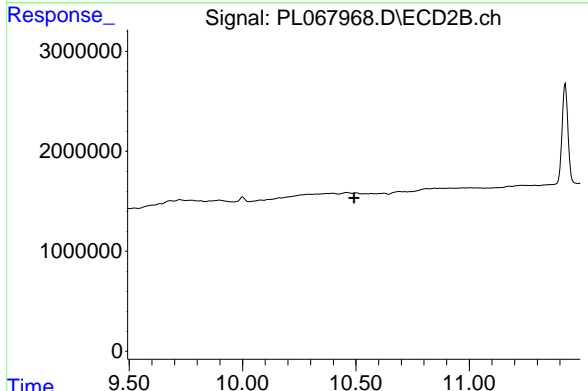


#21 Endrin ketone  
 R.T.: 9.999 min  
 Delta R.T.: -0.027 min  
 Response: 701841  
 Conc: 0.77 ng/ml

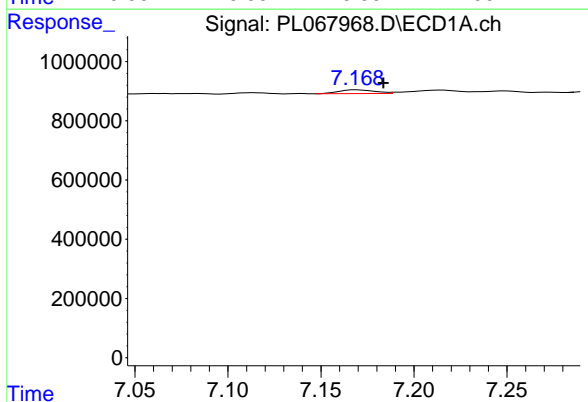


#22 Mirex  
 R.T.: 9.299 min  
 Delta R.T.: -0.006 min  
 Response: 244443  
 Conc: 0.39 ng/ml

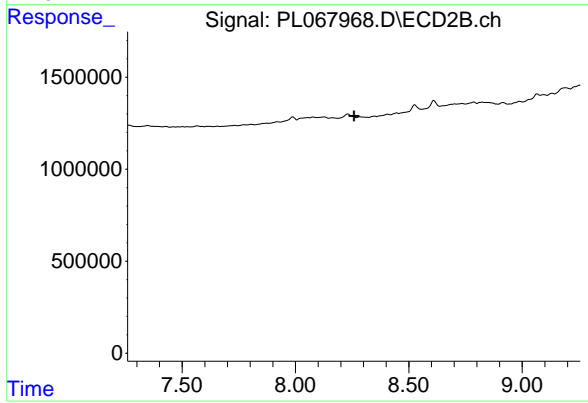
Instrument :  
 ECD\_L  
 ClientSampled :



#22 Mirex  
 R.T.: 0.000 min  
 Exp R.T. : 10.492 min  
 Response: 0  
 Conc: N.D.

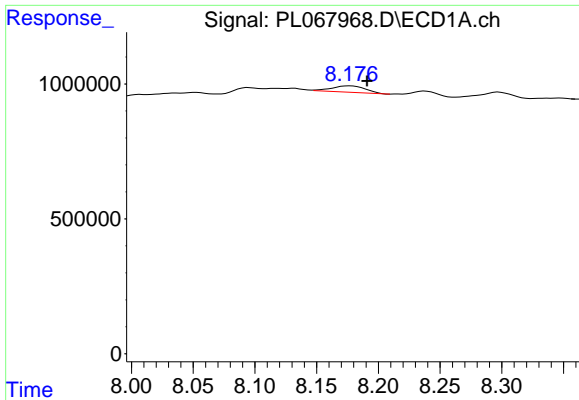


#25 Chlordane-3  
 R.T.: 7.170 min  
 Delta R.T.: -0.014 min  
 Response: 168700  
 Conc: 2.51 ng/ml



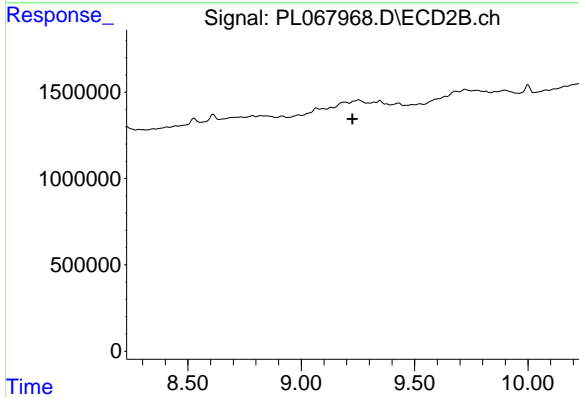
#25 Chlordane-3  
 R.T.: 0.000 min  
 Exp R.T. : 8.259 min  
 Response: 0  
 Conc: N.D.



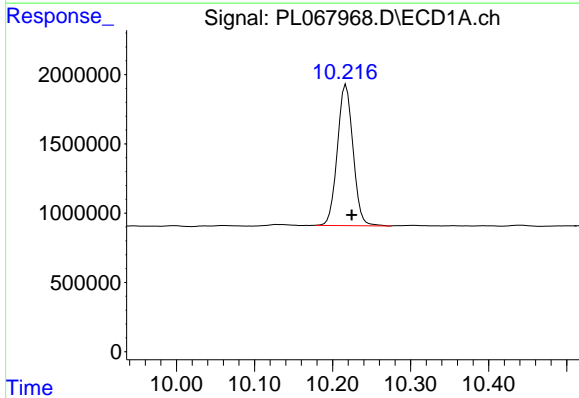


#27 Chlordane-5  
 R.T.: 8.177 min  
 Delta R.T.: -0.014 min  
 Response: 447754  
 Conc: 20.46 ng/ml

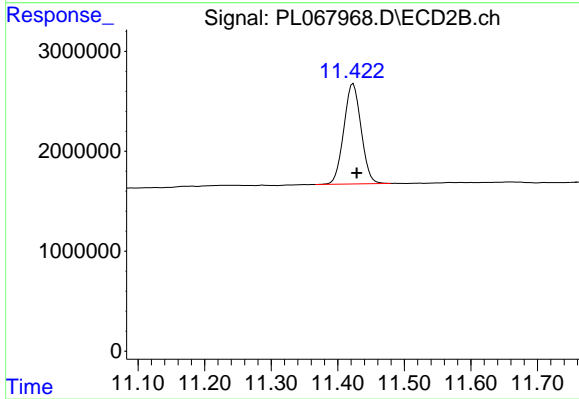
Instrument :  
 ECD\_L  
 ClientSampled :



#27 Chlordane-5  
 R.T.: 0.000 min  
 Exp R.T. : 9.227 min  
 Response: 0  
 Conc: N.D.



#28 Decachlorobiphenyl  
 R.T.: 10.217 min  
 Delta R.T.: -0.007 min  
 Response: 14167831  
 Conc: 19.99 ng/ml



#28 Decachlorobiphenyl  
 R.T.: 11.423 min  
 Delta R.T.: -0.005 min  
 Response: 18089628  
 Conc: 18.16 ng/ml