

Data Path : Z:\pestpcbsrv\HPCHEM1\ECD_L\Data\PL070622\
 Data File : PL076266.D
 Signal(s) : Signal #1: ECD1A.ch Signal #2: ECD2B.ch
 Acq On : 06 Jul 2022 12:02
 Operator : AR\AJ
 Sample : N3562-01
 Misc :
 ALS Vial : 10 Sample Multiplier: 1

Instrument :
 ECD_L
 ClientSampleId :

Integration File signal 1: autoint1.e
 Integration File signal 2: autoint2.e
 Quant Time: Jul 07 00:10:22 2022
 Quant Method : Z:\pestpcbsrv\HPCHEM1\ECD_L\methods\PL062222.M
 Quant Title : GC Extractables
 QLast Update : Fri Jun 24 02:17:51 2022
 Response via : Initial Calibration
 Integrator: ChemStation

Volume Inj. : 1 µl
 Signal #1 Phase : ZB-MR2 Signal #2 Phase: ZB-MR1
 Signal #1 Info : 30M x 0.32mm x0.2 Signal #2 Info : 30M x 0.32mm x0.5µm

Compound	RT#1	RT#2	Resp#1	Resp#2	ng/ml	ng/ml
System Monitoring Compounds						
1) SA Tetrachlo...	5.637	4.625	8168310	23304483	10.800	12.287
28) SA Decachlor...	11.627	10.361	8238813	21279857	13.093	13.855
Target Compounds						
2) A alpha-BHC	6.254f	5.341	298164	4669620	0.302	1.910 #
4) MA Heptachlor	7.303f	0.000	305046	0	0.333	N.D. #
5) MB Aldrin	0.000	6.469f	0	454259	N.D.	0.220 #
7) B delta-BHC	0.000	6.387	0	507755	N.D.	0.225 #
8) B Heptachlo...	8.109	7.090f	784615	101267	0.985	0.053 #
10) B gamma-Chl...	0.000	7.357f	0	1889810	N.D.	0.983 #
11) B alpha-Chl...	8.467	7.385f	502811	1733623	0.647	0.906 #
12) B 4,4'-DDE	8.649	7.605	335081	259378	0.496	0.153 #
13) MA Dieldrin	8.803	7.742	110552	3027238	0.151	1.682 #
14) MA Endrin	9.046	8.041	463202	-401339	0.743	N.D. #
15) B Endosulfa...	9.299	8.328f	91149	337237	0.144	0.223 #
16) A 4,4'-DDD	9.194	0.000	695646	0	1.227	N.D. #
17) MA 4,4'-DDT	9.511	8.442f	219910	4042377	0.360	2.733 #
18) B Endrin al...	0.000	8.544	0	302215	N.D.	0.253 #
19) B Endosulfa...	0.000	8.779	0	1201551	N.D.	0.783 #
20) A Methoxychlor	10.033f	0.000	171199	0	0.499	N.D. #
21) B Endrin ke...	10.177	9.304f	936695	314330	1.300	0.190 #
22) Mirex	10.635	9.455	430906	1144604	0.801	0.855
23) Chlordane-1	7.039	0.000	227731	0	8.998	N.D. #
24) Chlordane-2	0.000	6.631	0	413356	N.D.	5.945 #
25) Chlordane-3	0.000	7.357f	0	1889810	N.D.	10.715 #
26) Chlordane-4	8.467	7.385f	502811	1733623	4.039	9.196 #
27) Chlordane-5	0.000	8.105	0	1087530	N.D.	23.769 #

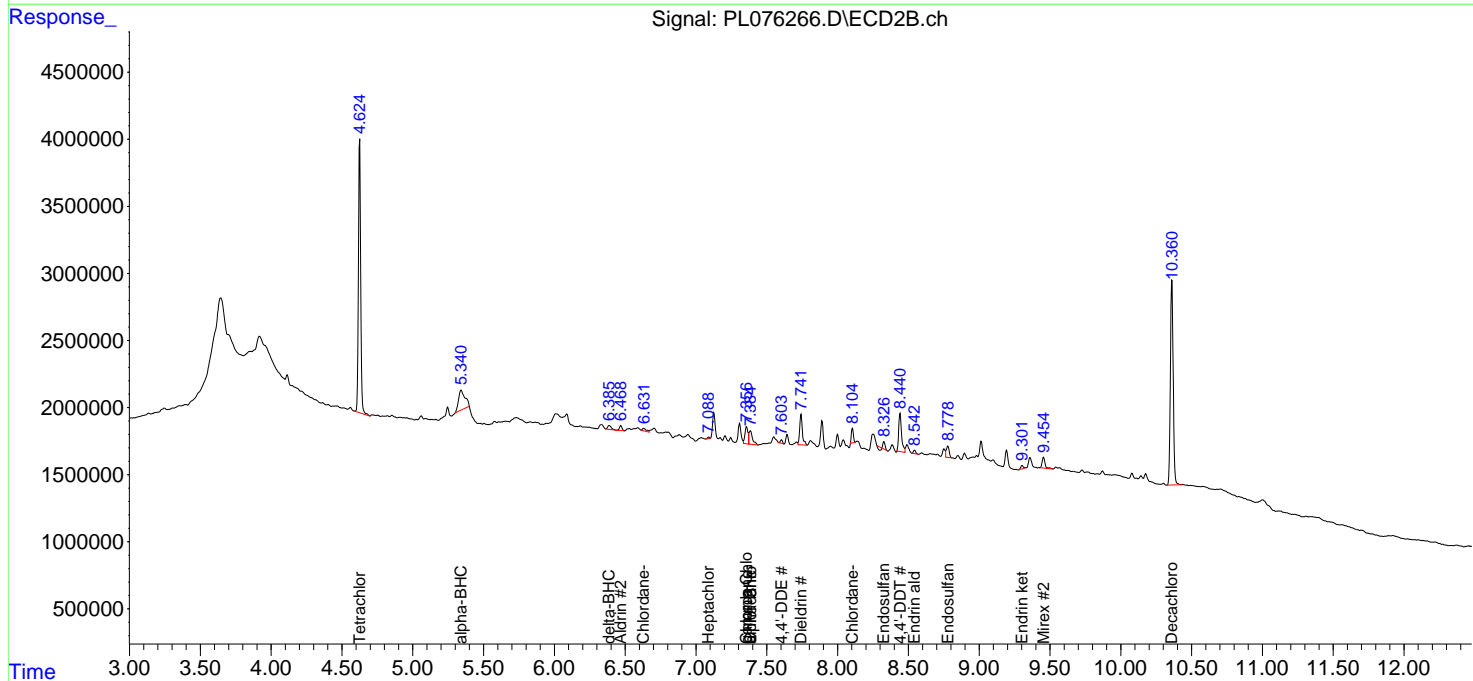
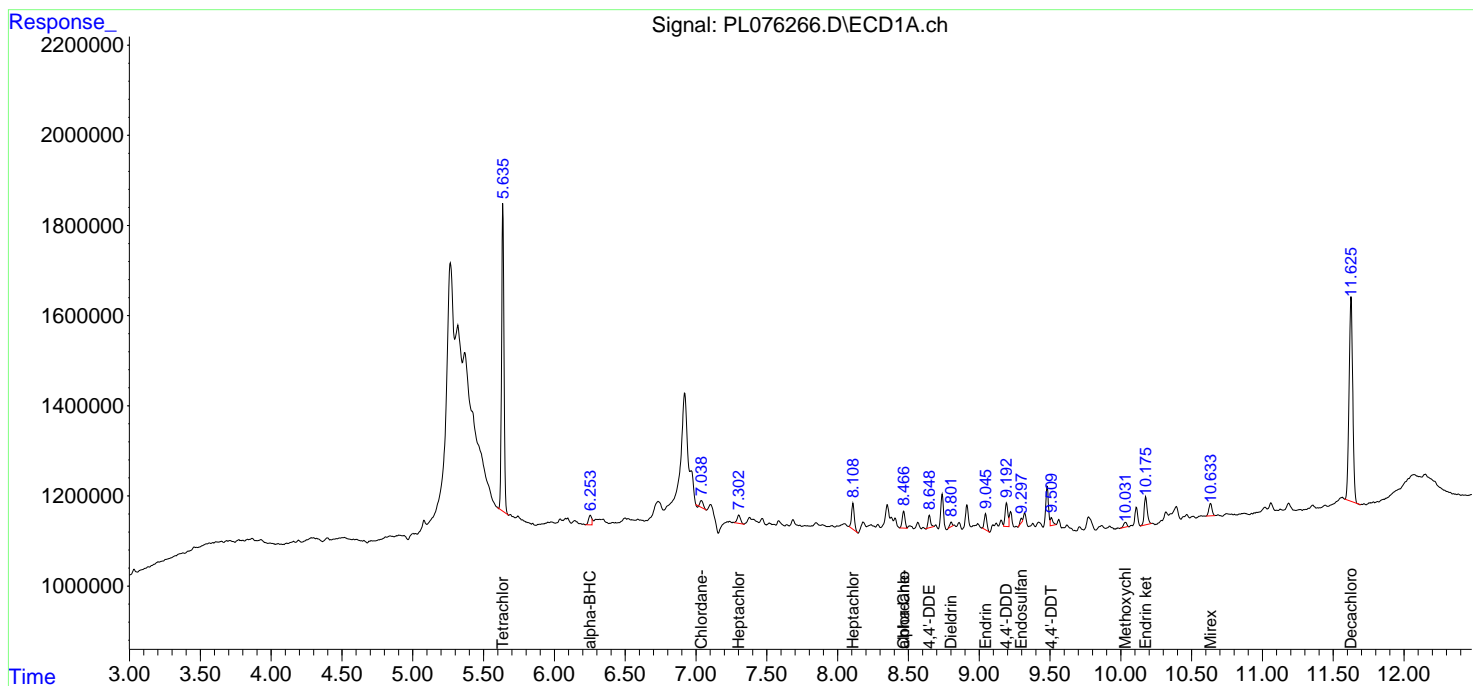
(f)=RT Delta > 1/2 Window (#)=Amounts differ by > 25% (m)=manual int.

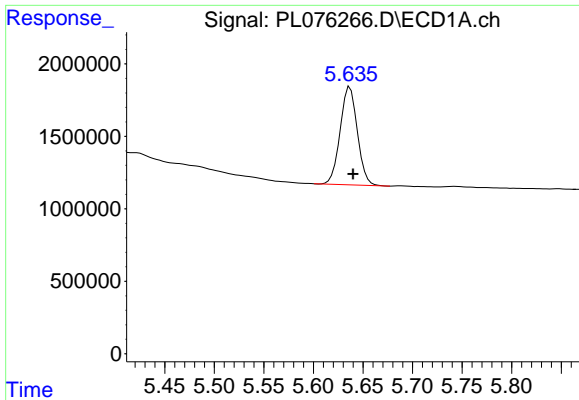
Data Path : Z:\pestpcbsrv\HPCHEM1\ECD_L\Data\PL070622\
 Data File : PL076266.D
 Signal(s) : Signal #1: ECD1A.ch Signal #2: ECD2B.ch
 Acq On : 06 Jul 2022 12:02
 Operator : AR\AJ
 Sample : N3562-01
 Misc :
 ALS Vial : 10 Sample Multiplier: 1

Instrument :
 ECD_L
 ClientSampleId :

Integration File signal 1: autoint1.e
 Integration File signal 2: autoint2.e
 Quant Time: Jul 07 00:10:22 2022
 Quant Method : Z:\pestpcbsrv\HPCHEM1\ECD_L\methods\PL062222.M
 Quant Title : GC Extractables
 QLast Update : Fri Jun 24 02:17:51 2022
 Response via : Initial Calibration
 Integrator: ChemStation

Volume Inj. : 1 µl
 Signal #1 Phase : ZB-MR2 Signal #2 Phase: ZB-MR1
 Signal #1 Info : 30M x 0.32mm x0.2 Signal #2 Info : 30M x 0.32mm x0.5µm

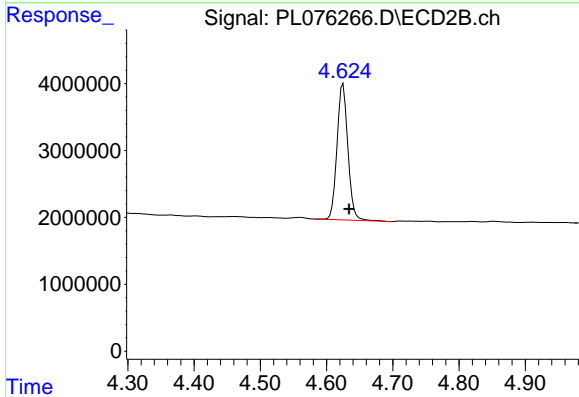




#1 Tetrachloro-m-xylene

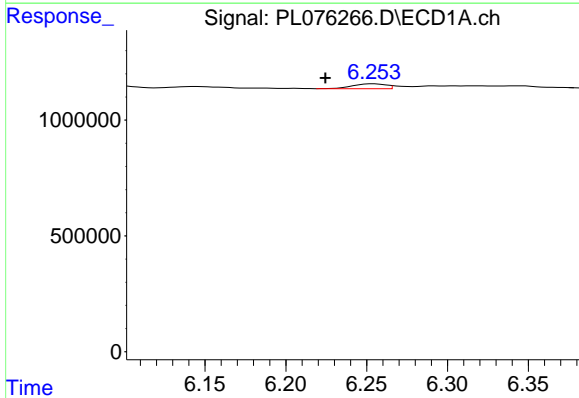
R.T.: 5.637 min
 Delta R.T.: -0.003 min
 Response: 8168310
 Conc: 10.80 ng/ml

Instrument :
 ECD_L
 ClientSampleId :



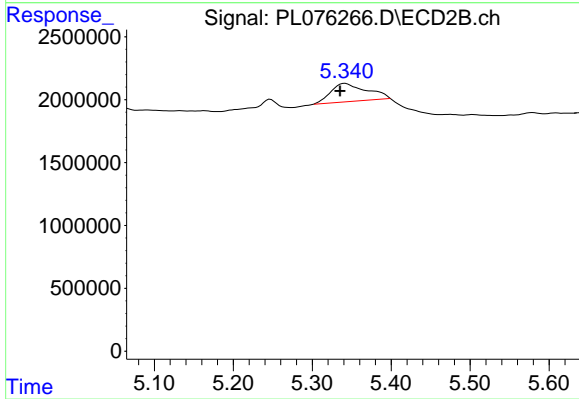
#1 Tetrachloro-m-xylene

R.T.: 4.625 min
 Delta R.T.: -0.009 min
 Response: 23304483
 Conc: 12.29 ng/ml



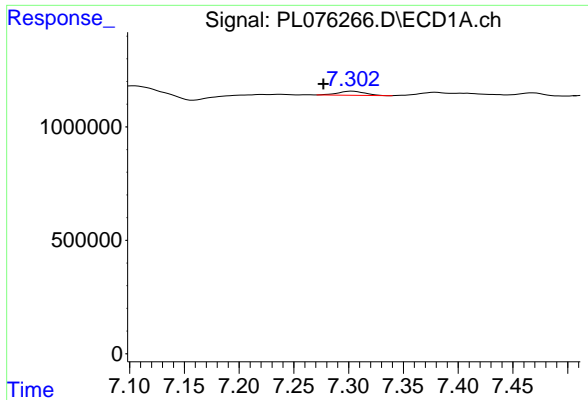
#2 alpha-BHC

R.T.: 6.254 min
 Delta R.T.: 0.030 min
 Response: 298164
 Conc: 0.30 ng/ml



#2 alpha-BHC

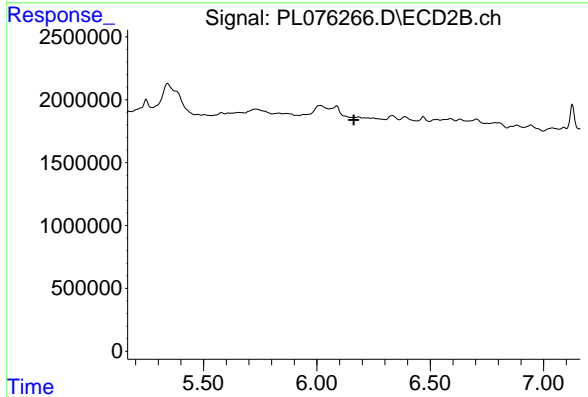
R.T.: 5.341 min
 Delta R.T.: 0.006 min
 Response: 4669620
 Conc: 1.91 ng/ml



#4 Heptachlor

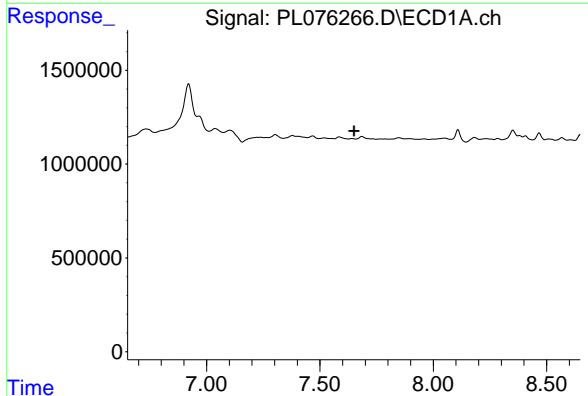
R.T.: 7.303 min
 Delta R.T.: 0.026 min
 Response: 305046
 Conc: 0.33 ng/ml

Instrument :
 ECD_L
 ClientSampleId :



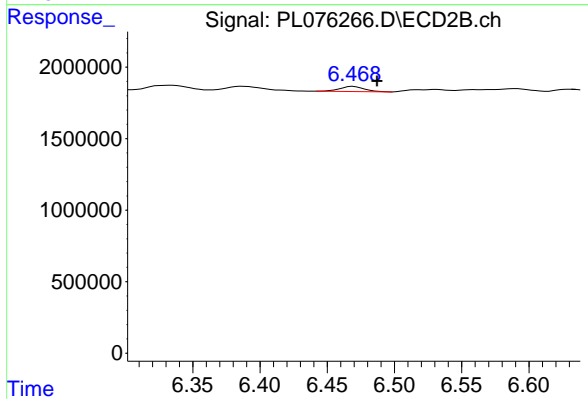
#4 Heptachlor

R.T.: 0.000 min
 Exp R.T. : 6.163 min
 Response: 0
 Conc: N.D.



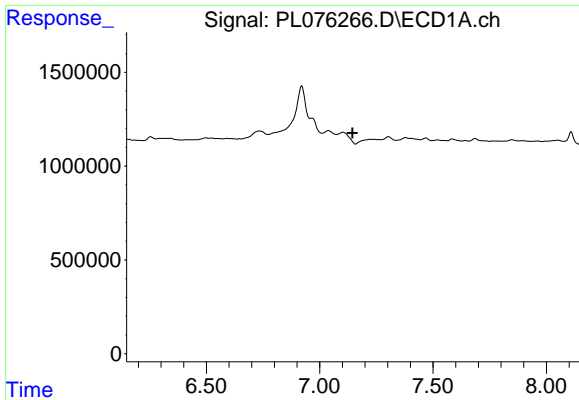
#5 Aldrin

R.T.: 0.000 min
 Exp R.T. : 7.651 min
 Response: 0
 Conc: N.D.



#5 Aldrin

R.T.: 6.469 min
 Delta R.T.: -0.018 min
 Response: 454259
 Conc: 0.22 ng/ml

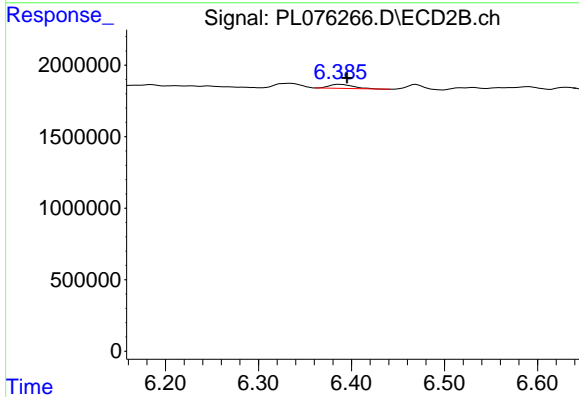


#7 delta-BHC

R.T.: 0.000 min
 Exp R.T.: 7.145 min
 Response: 0
 Conc: N.D.

Instrument :
 ECD_L
 ClientSampleId :

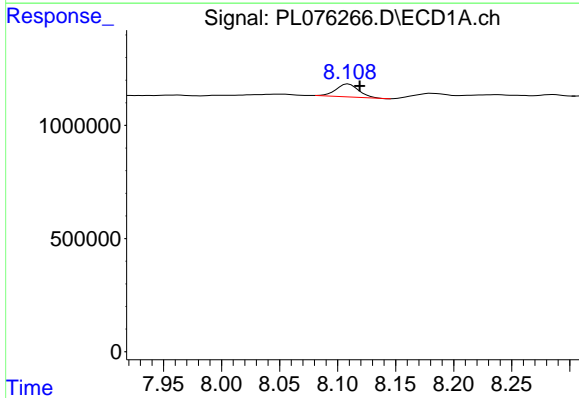
Time



#7 delta-BHC

R.T.: 6.387 min
 Delta R.T.: -0.008 min
 Response: 507755
 Conc: 0.22 ng/ml

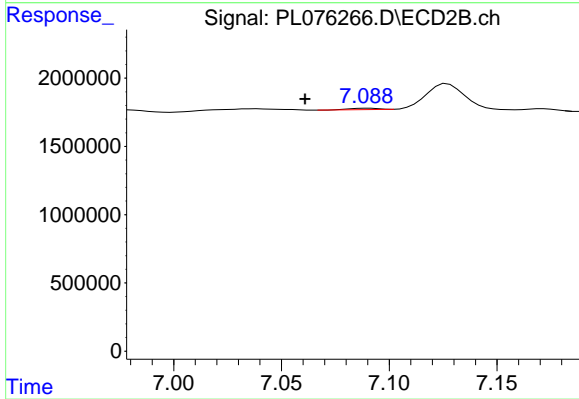
Time



#8 Heptachlor epoxide

R.T.: 8.109 min
 Delta R.T.: -0.010 min
 Response: 784615
 Conc: 0.99 ng/ml

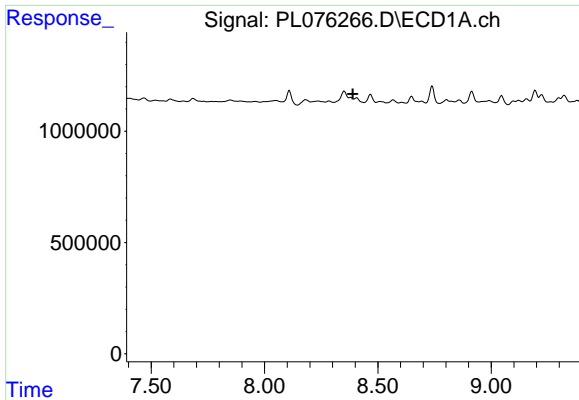
Time



#8 Heptachlor epoxide

R.T.: 7.090 min
 Delta R.T.: 0.029 min
 Response: 101267
 Conc: 0.05 ng/ml

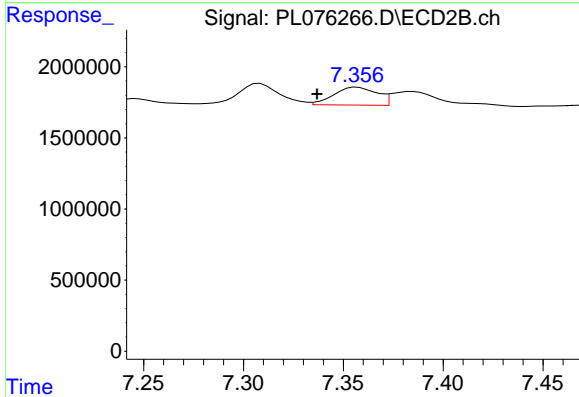
Time



#10 gamma-Chlordane

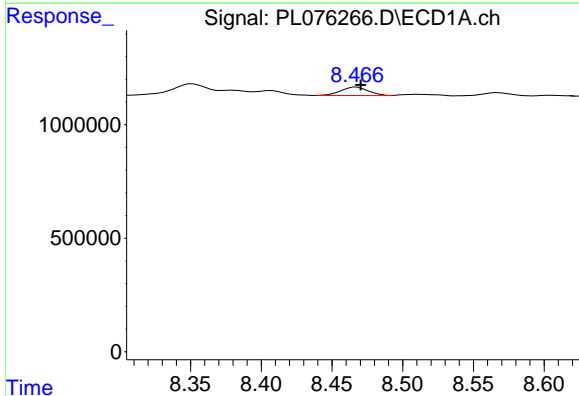
R.T.: 0.000 min
 Exp R.T.: 8.389 min
 Response: 0
 Conc: N.D.

Instrument :
 ECD_L
 ClientSampleId :



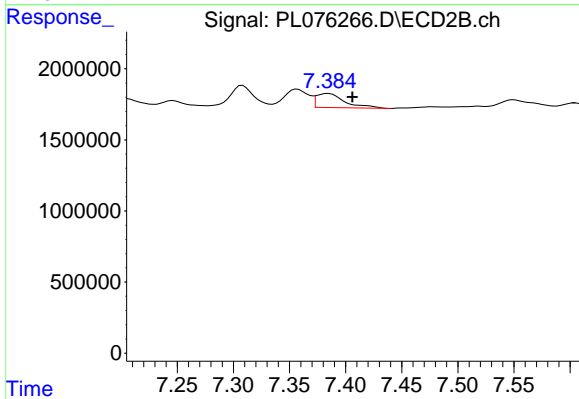
#10 gamma-Chlordane

R.T.: 7.357 min
 Delta R.T.: 0.020 min
 Response: 1889810
 Conc: 0.98 ng/ml



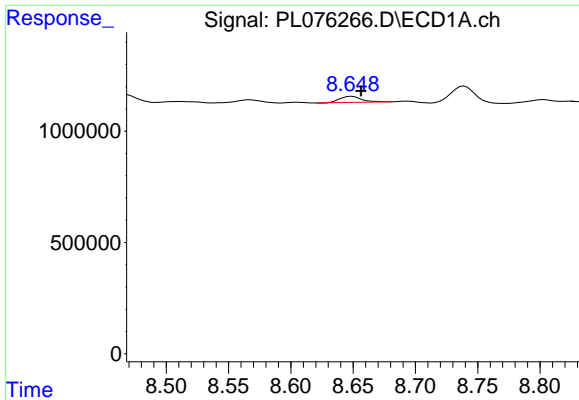
#11 alpha-Chlordane

R.T.: 8.467 min
 Delta R.T.: -0.003 min
 Response: 502811
 Conc: 0.65 ng/ml



#11 alpha-Chlordane

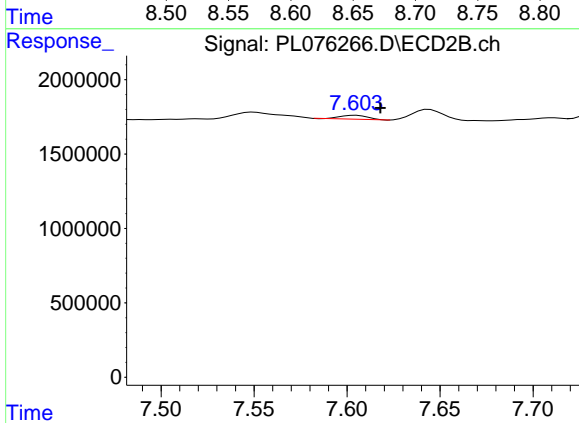
R.T.: 7.385 min
 Delta R.T.: -0.021 min
 Response: 1733623
 Conc: 0.91 ng/ml



#12 4,4'-DDE

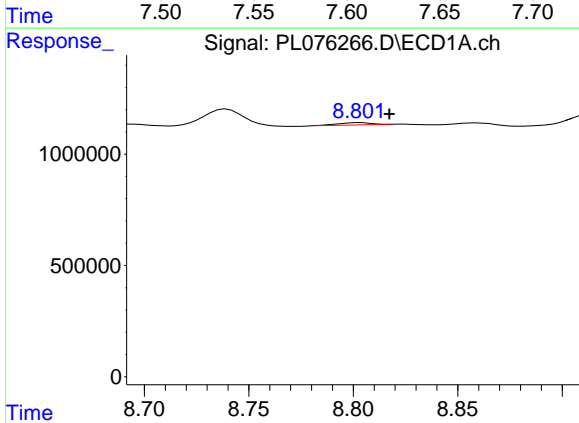
R.T.: 8.649 min
 Delta R.T.: -0.008 min
 Response: 335081
 Conc: 0.50 ng/ml

Instrument :
 ECD_L
 ClientSampleId :



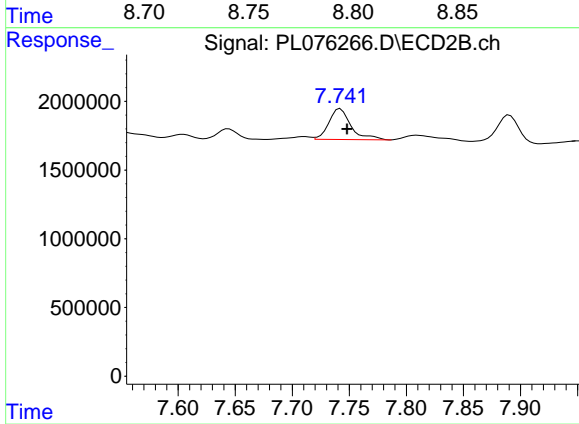
#12 4,4'-DDE

R.T.: 7.605 min
 Delta R.T.: -0.013 min
 Response: 259378
 Conc: 0.15 ng/ml



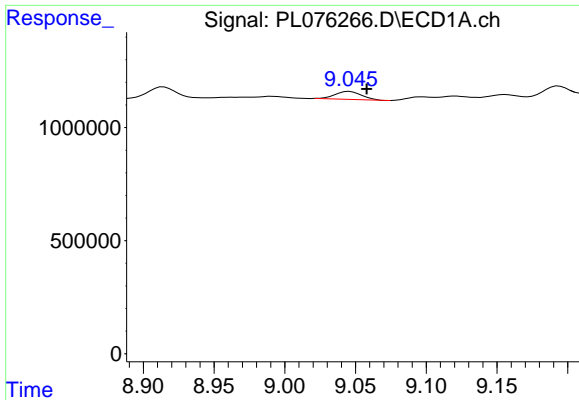
#13 Dieldrin

R.T.: 8.803 min
 Delta R.T.: -0.014 min
 Response: 110552
 Conc: 0.15 ng/ml



#13 Dieldrin

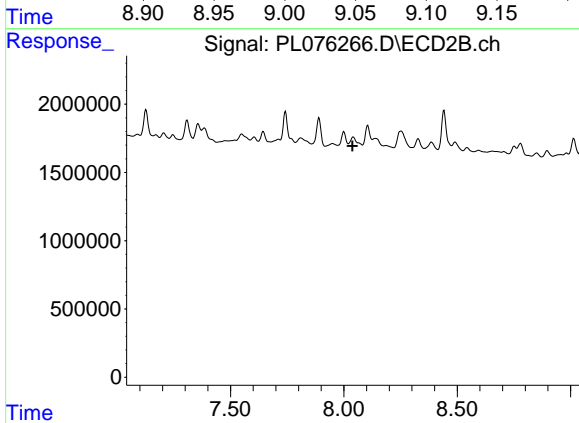
R.T.: 7.742 min
 Delta R.T.: -0.006 min
 Response: 3027238
 Conc: 1.68 ng/ml



#14 Endrin

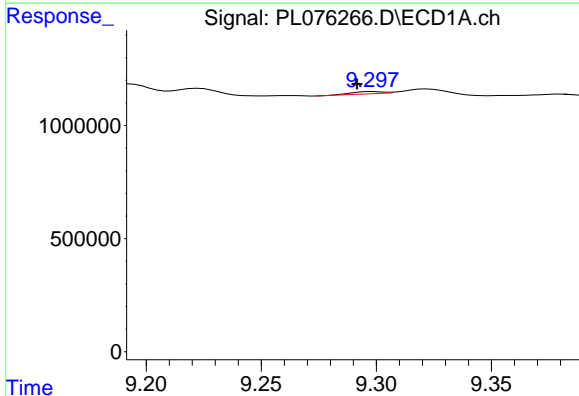
R.T.: 9.046 min
 Delta R.T.: -0.012 min
 Response: 463202
 Conc: 0.74 ng/ml

Instrument :
 ECD_L
 ClientSampleId :



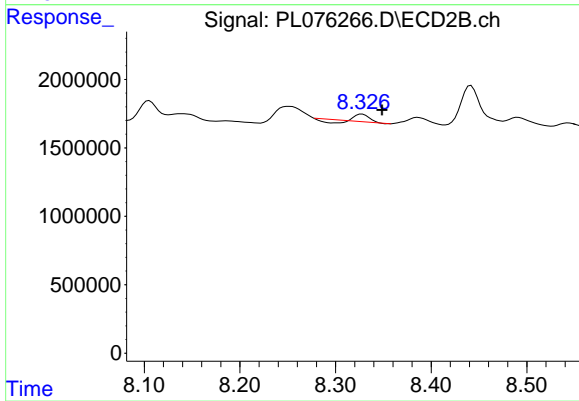
#14 Endrin

R.T.: 8.041 min
 Delta R.T.: 0.003 min
 Response: -401339
 Conc: N.D.



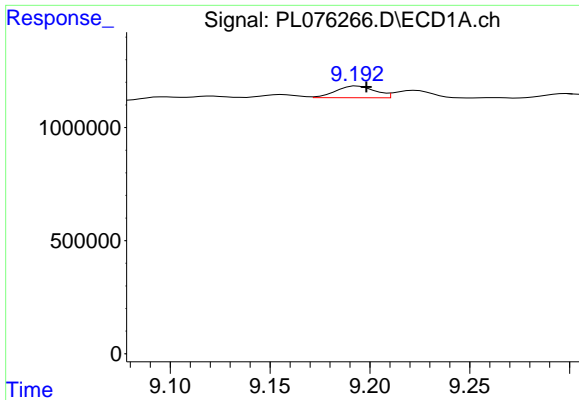
#15 Endosulfan II

R.T.: 9.299 min
 Delta R.T.: 0.007 min
 Response: 91149
 Conc: 0.14 ng/ml



#15 Endosulfan II

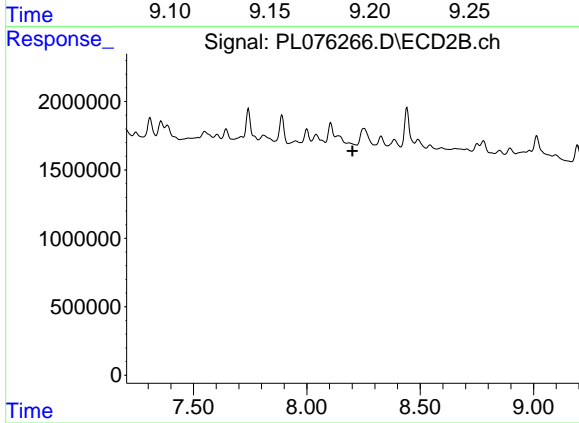
R.T.: 8.328 min
 Delta R.T.: -0.021 min
 Response: 337237
 Conc: 0.22 ng/ml



#16 4,4'-DDD

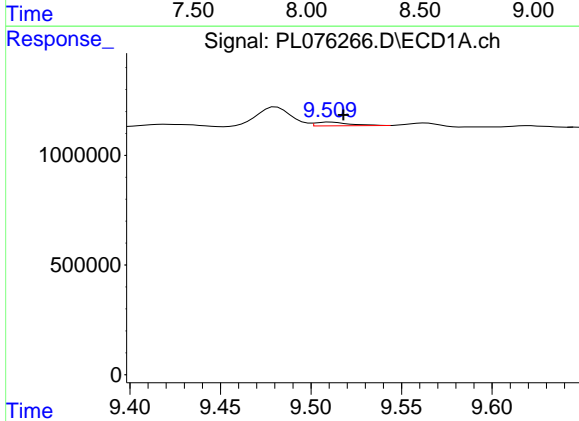
R.T.: 9.194 min
 Delta R.T.: -0.004 min
 Response: 695646
 Conc: 1.23 ng/ml

Instrument :
 ECD_L
 ClientSampleId :



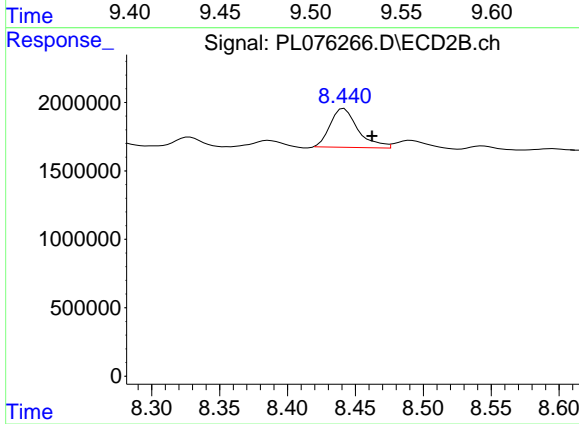
#16 4,4'-DDD

R.T.: 0.000 min
 Exp R.T. : 8.202 min
 Response: 0
 Conc: N.D.



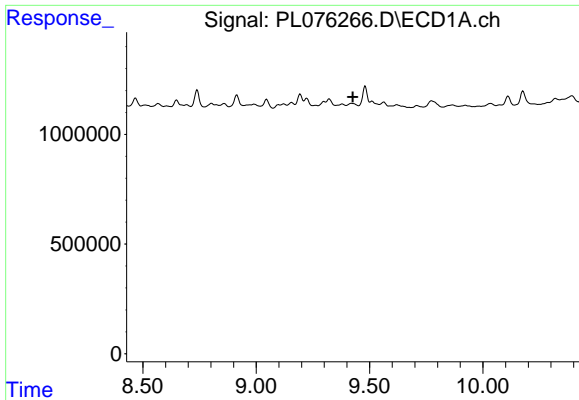
#17 4,4'-DDT

R.T.: 9.511 min
 Delta R.T.: -0.007 min
 Response: 219910
 Conc: 0.36 ng/ml



#17 4,4'-DDT

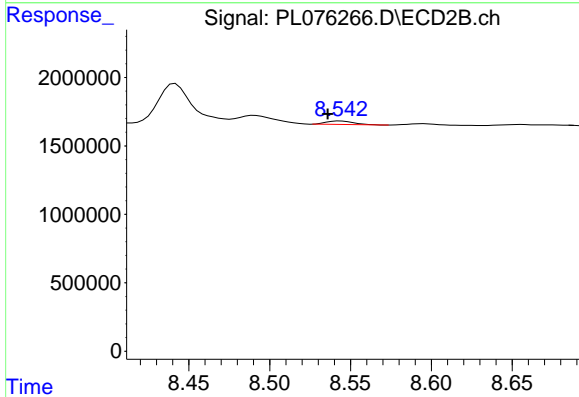
R.T.: 8.442 min
 Delta R.T.: -0.021 min
 Response: 4042377
 Conc: 2.73 ng/ml



#18 Endrin aldehyde

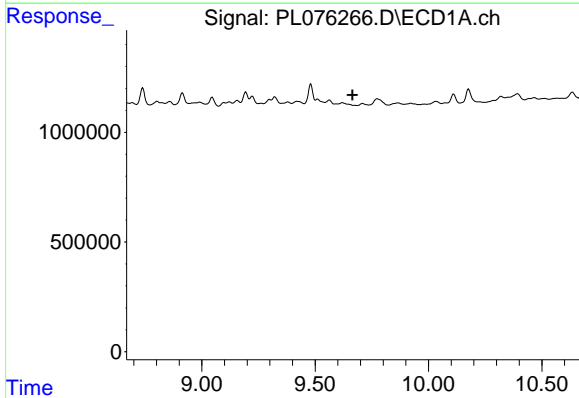
R.T.: 0.000 min
 Exp R.T.: 9.426 min
 Response: 0
 Conc: N.D.

Instrument :
 ECD_L
 ClientSampleId :



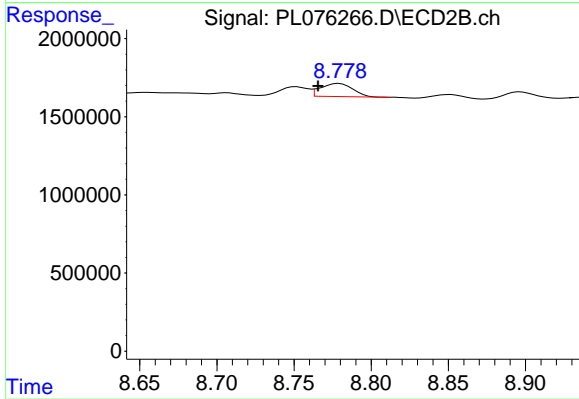
#18 Endrin aldehyde

R.T.: 8.544 min
 Delta R.T.: 0.008 min
 Response: 302215
 Conc: 0.25 ng/ml



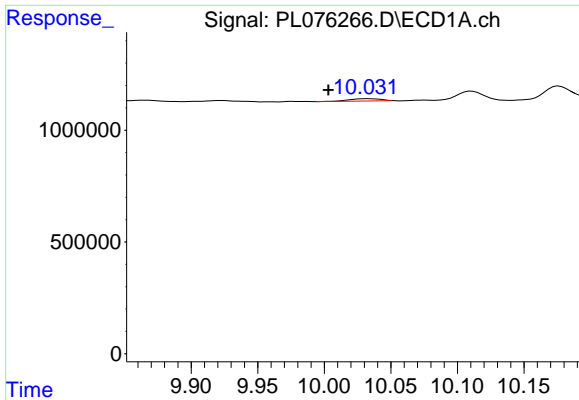
#19 Endosulfan Sulfate

R.T.: 0.000 min
 Exp R.T.: 9.665 min
 Response: 0
 Conc: N.D.



#19 Endosulfan Sulfate

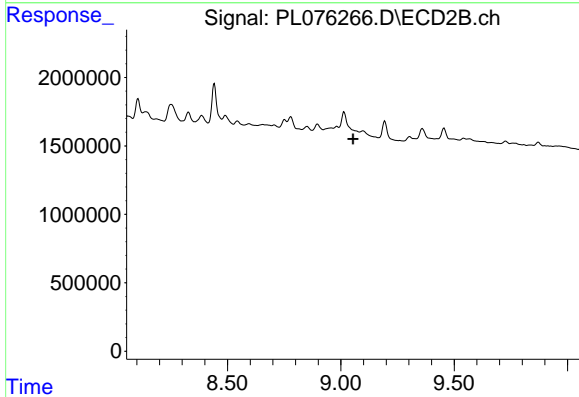
R.T.: 8.779 min
 Delta R.T.: 0.014 min
 Response: 1201551
 Conc: 0.78 ng/ml



#20 Methoxychlor

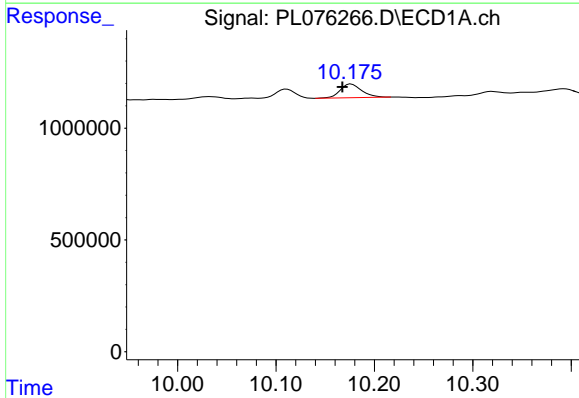
R.T.: 10.033 min
 Delta R.T.: 0.030 min
 Response: 171199
 Conc: 0.50 ng/ml

Instrument :
 ECD_L
 ClientSampleId :



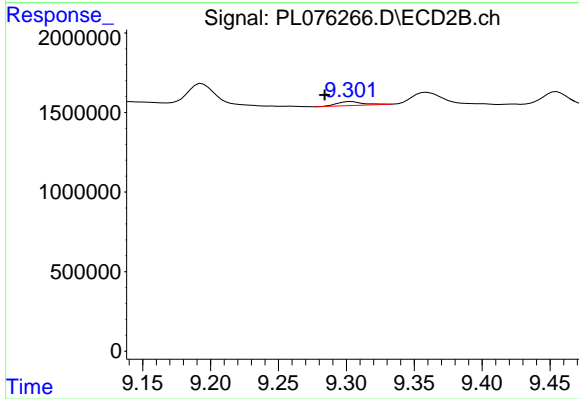
#20 Methoxychlor

R.T.: 0.000 min
 Exp R.T. : 9.054 min
 Response: 0
 Conc: N.D.



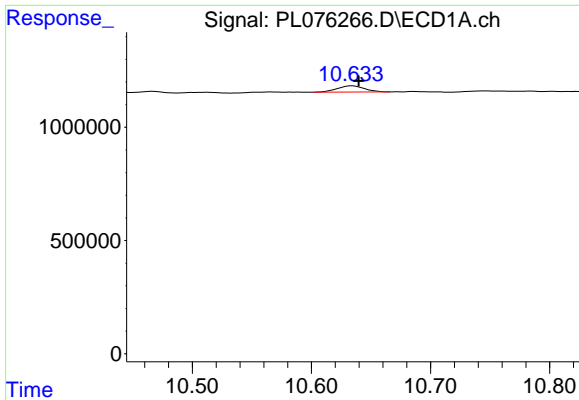
#21 Endrin ketone

R.T.: 10.177 min
 Delta R.T.: 0.009 min
 Response: 936695
 Conc: 1.30 ng/ml



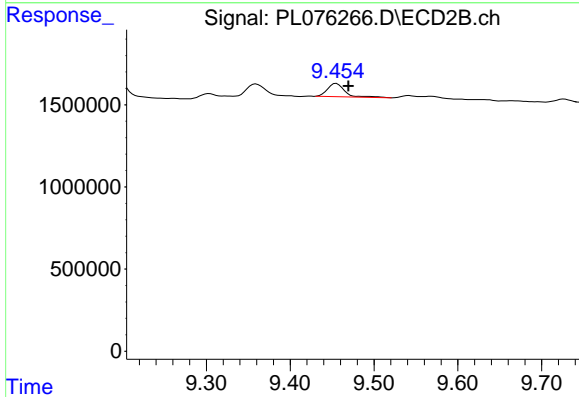
#21 Endrin ketone

R.T.: 9.304 min
 Delta R.T.: 0.020 min
 Response: 314330
 Conc: 0.19 ng/ml

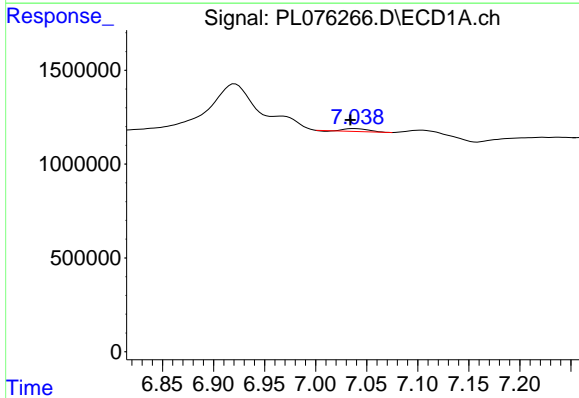


#22 Mirex
 R.T.: 10.635 min
 Delta R.T.: -0.005 min
 Response: 430906
 Conc: 0.80 ng/ml

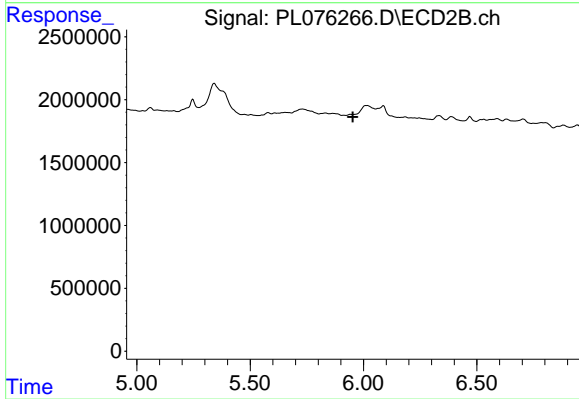
Instrument :
 ECD_L
 ClientSampleId :



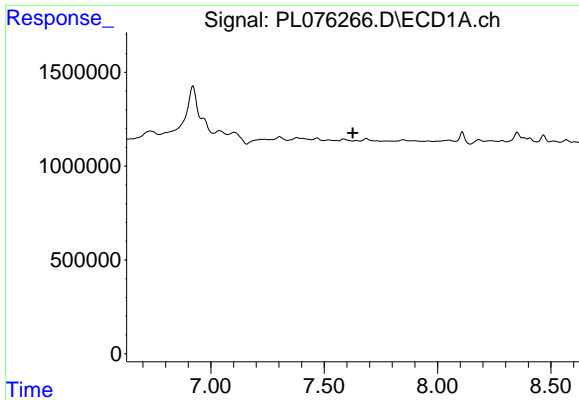
#22 Mirex
 R.T.: 9.455 min
 Delta R.T.: -0.015 min
 Response: 1144604
 Conc: 0.86 ng/ml



#23 Chlordane-1
 R.T.: 7.039 min
 Delta R.T.: 0.005 min
 Response: 227731
 Conc: 9.00 ng/ml



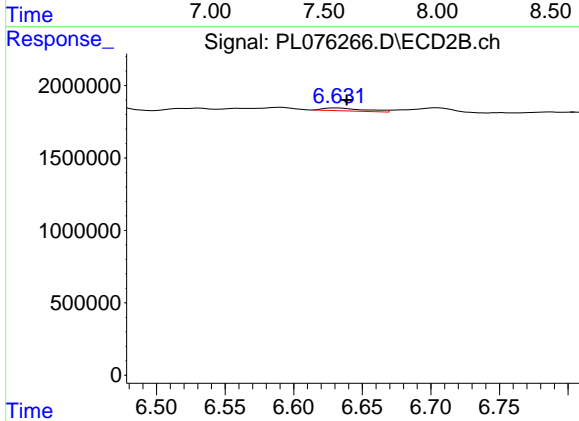
#23 Chlordane-1
 R.T.: 0.000 min
 Exp R.T. : 5.953 min
 Response: 0
 Conc: N.D.



#24 Chlordane-2

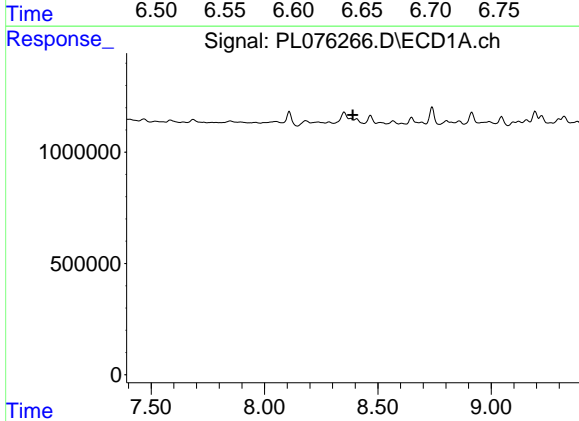
R.T.: 0.000 min
 Exp R.T.: 7.627 min
 Response: 0
 Conc: N.D.

Instrument :
 ECD_L
 ClientSampleId :



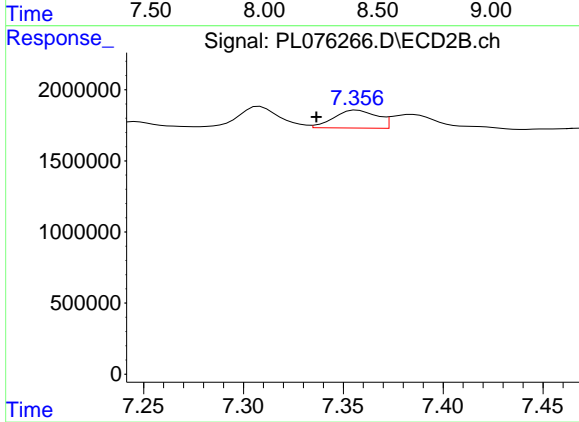
#24 Chlordane-2

R.T.: 6.631 min
 Delta R.T.: -0.008 min
 Response: 413356
 Conc: 5.94 ng/ml



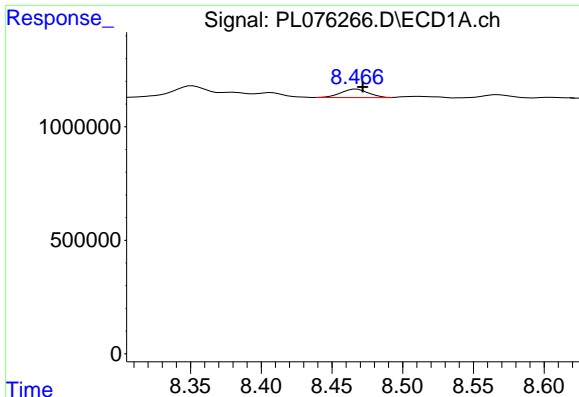
#25 Chlordane-3

R.T.: 0.000 min
 Exp R.T.: 8.389 min
 Response: 0
 Conc: N.D.



#25 Chlordane-3

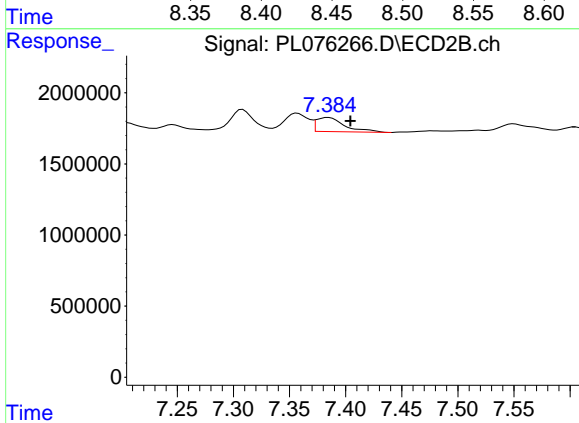
R.T.: 7.357 min
 Delta R.T.: 0.020 min
 Response: 1889810
 Conc: 10.72 ng/ml



#26 Chlordane-4

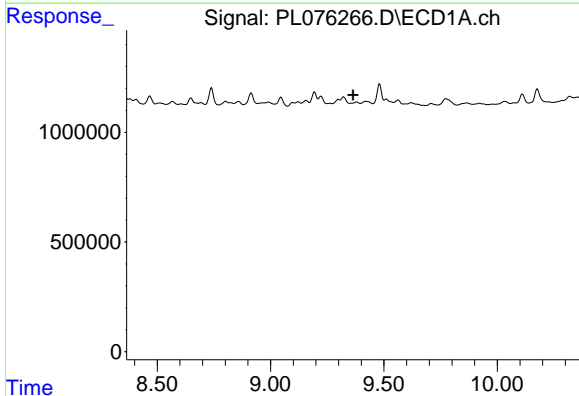
R.T.: 8.467 min
 Delta R.T.: -0.004 min
 Response: 502811
 Conc: 4.04 ng/ml

Instrument :
 ECD_L
 ClientSampleId :



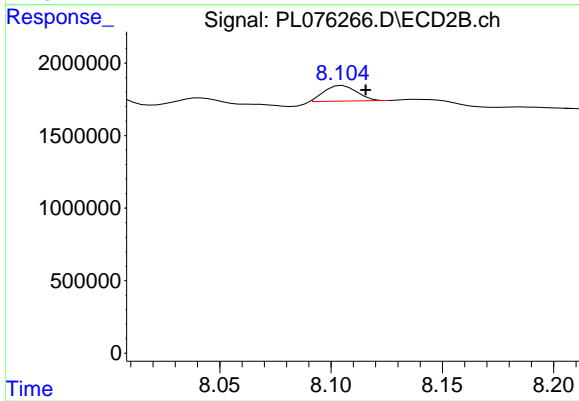
#26 Chlordane-4

R.T.: 7.385 min
 Delta R.T.: -0.019 min
 Response: 1733623
 Conc: 9.20 ng/ml



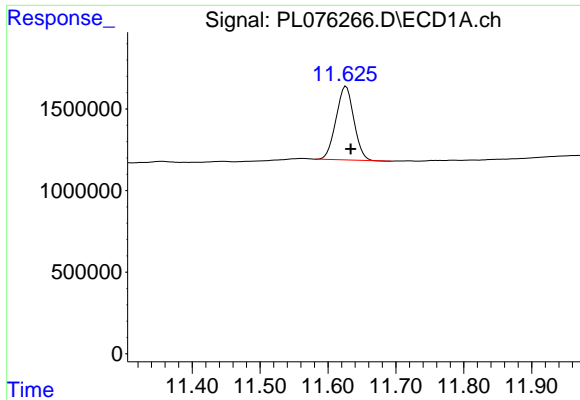
#27 Chlordane-5

R.T.: 0.000 min
 Exp R.T. : 9.365 min
 Response: 0
 Conc: N.D.



#27 Chlordane-5

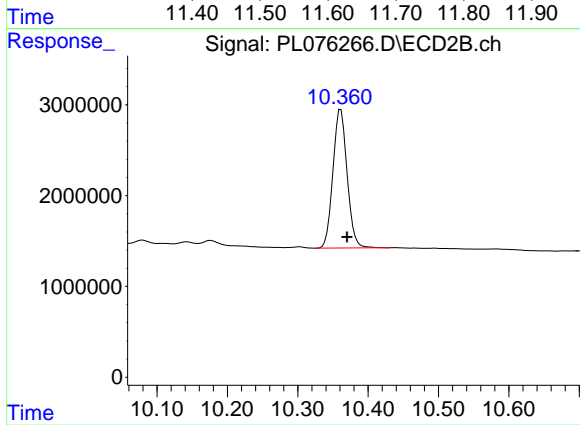
R.T.: 8.105 min
 Delta R.T.: -0.010 min
 Response: 1087530
 Conc: 23.77 ng/ml



#28 Decachlorobiphenyl

R.T.: 11.627 min
Delta R.T.: -0.007 min
Response: 8238813
Conc: 13.09 ng/ml

Instrument :
ECD_L
ClientSampleId :



#28 Decachlorobiphenyl

R.T.: 10.361 min
Delta R.T.: -0.009 min
Response: 21279857
Conc: 13.86 ng/ml