

Data Path : Z:\pestpcbsrv\HPCHEM1\ECD\_L\Data\PL070721\  
 Data File : PL067999.D  
 Signal(s) : Signal #1: ECD1A.ch Signal #2: ECD2B.ch  
 Acq On : 07 Jul 2021 17:16  
 Operator : AR\AJ  
 Sample : M2947-05  
 Misc :  
 ALS Vial : 15 Sample Multiplier: 1

Instrument :  
 ECD\_L  
 ClientSampleId :  
 SOIL-BANK-5

Integration File signal 1: autoint1.e  
 Integration File signal 2: autoint2.e  
 Quant Time: Jul 08 01:40:40 2021  
 Quant Method : Z:\pestpcbsrv\HPCHEM1\ECD\_L\methods\PL061021.M  
 Quant Title : GC Extractables  
 QLast Update : Fri Jun 11 02:00:12 2021  
 Response via : Initial Calibration  
 Integrator: ChemStation

Volume Inj. : 1 µl  
 Signal #1 Phase : ZB-MR2 Signal #2 Phase: ZB-MR1  
 Signal #1 Info : 30M x 0.32mm x0.2 Signal #2 Info : 30M x 0.32mm x0.5µm

Compound	RT#1	RT#2	Resp#1	Resp#2	ng/ml	ng/ml
-----						
System Monitoring Compounds						
1) SA Tetrachlo...	4.475	5.526	11492018	21141386	20.903	22.426
28) SA Decachlor...	10.215	11.421	15008893	20975282	21.179	21.058
Target Compounds						
3) MA gamma-BHC...	5.610	0.000	489353	0	0.653	N.D. #
15) B Endosulfa...	0.000	9.176f	0	434434	N.D.	0.545 #
19) B Endosulfa...	8.583f	0.000	223066	0	0.351	N.D. #
21) B Endrin ke...	0.000	10.049f	0	109902	N.D.	0.121 #
23) Chlordane-1	0.000	6.938f	0	105172	N.D.	3.724 #
-----						

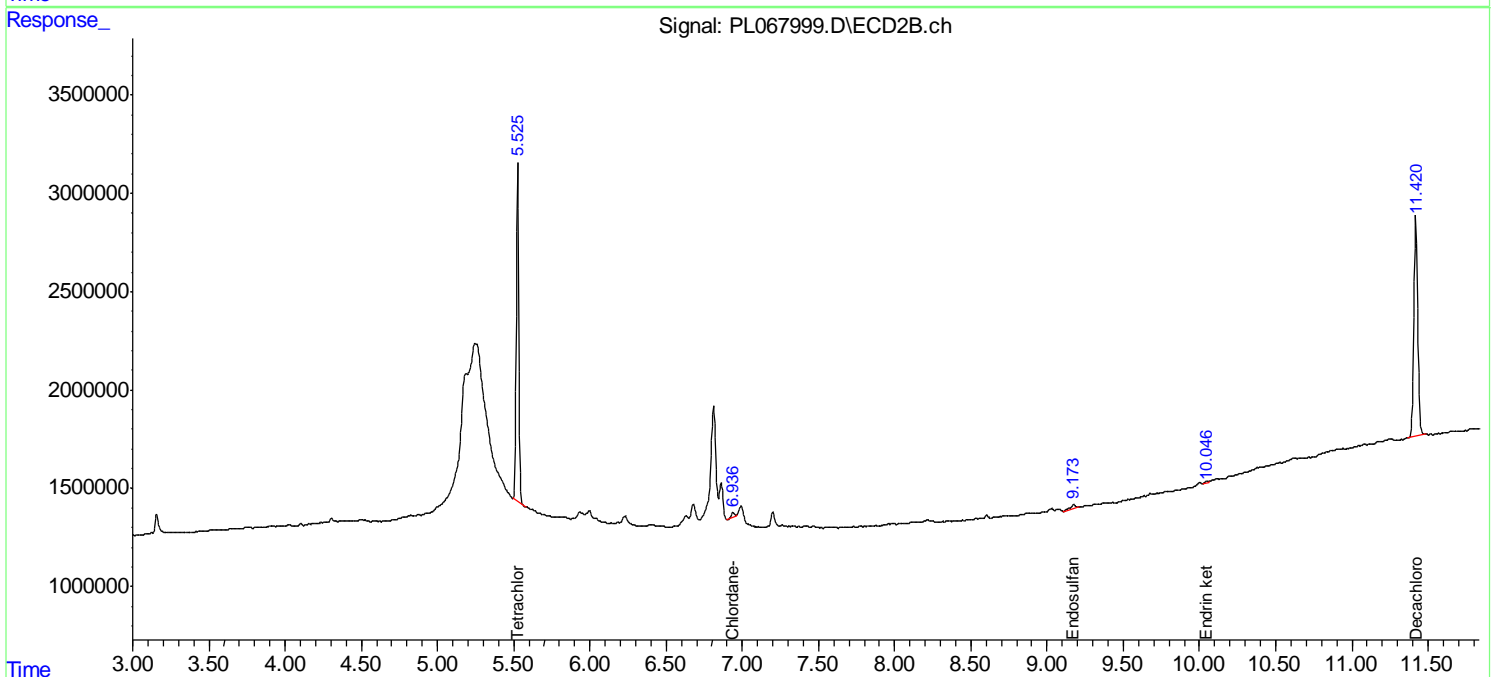
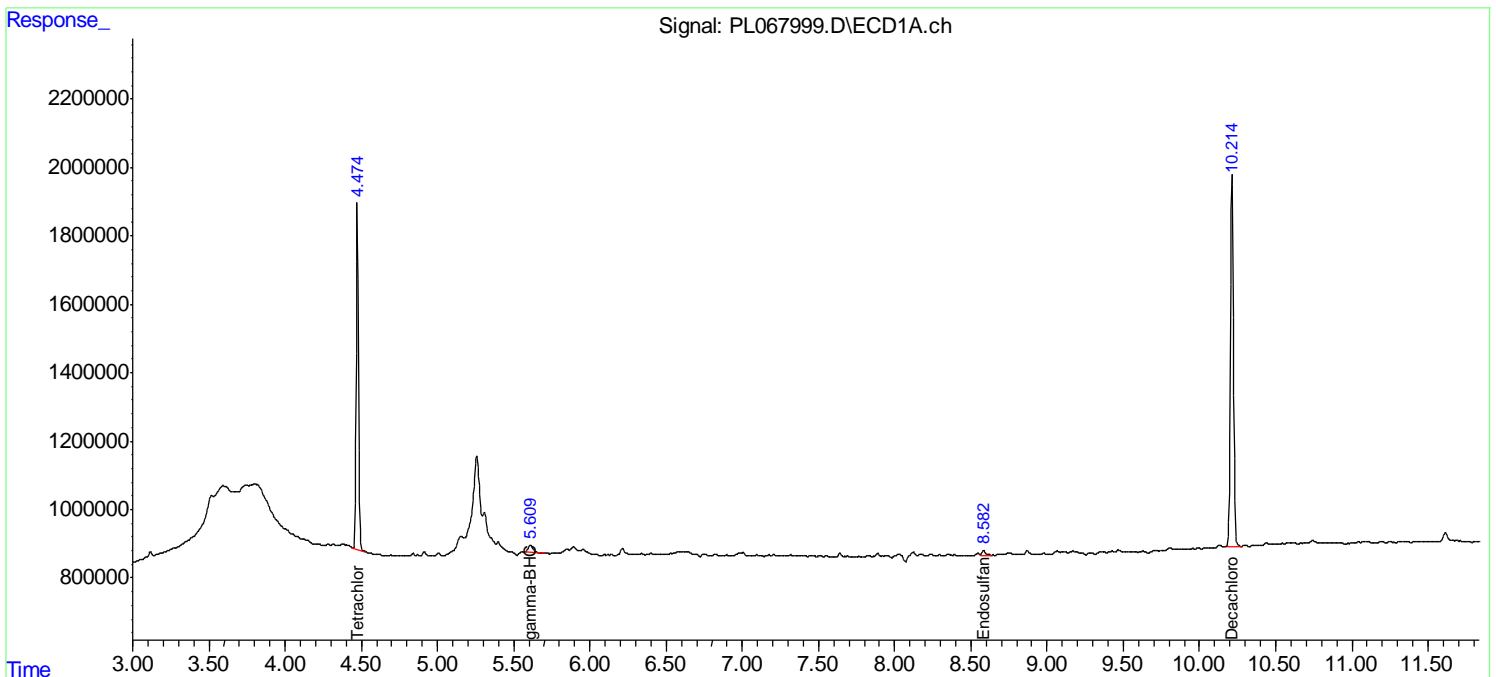
(f)=RT Delta > 1/2 Window (#)=Amounts differ by > 25% (m)=manual int.

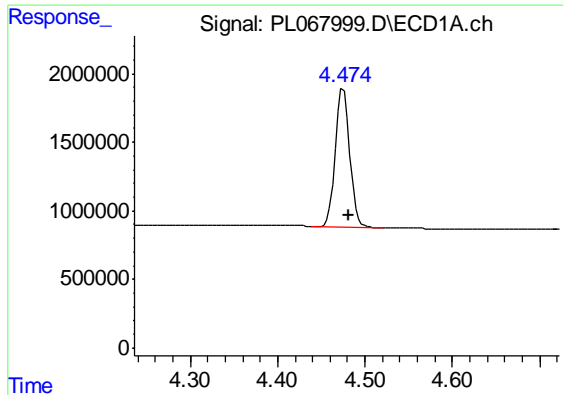
Data Path : Z:\pestpcbsrv\HPCHEM1\ECD\_L\Data\PL070721\  
 Data File : PL067999.D  
 Signal(s) : Signal #1: ECD1A.ch Signal #2: ECD2B.ch  
 Acq On : 07 Jul 2021 17:16  
 Operator : AR\AJ  
 Sample : M2947-05  
 Misc :  
 ALS Vial : 15 Sample Multiplier: 1

Instrument :  
 ECD\_L  
 ClientSampled :  
 SOIL-BANK-5

Integration File signal 1: autoint1.e  
 Integration File signal 2: autoint2.e  
 Quant Time: Jul 08 01:40:40 2021  
 Quant Method : Z:\pestpcbsrv\HPCHEM1\ECD\_L\methods\PL061021.M  
 Quant Title : GC Extractables  
 QLast Update : Fri Jun 11 02:00:12 2021  
 Response via : Initial Calibration  
 Integrator: ChemStation

Volume Inj. : 1 µl  
 Signal #1 Phase : ZB-MR2 Signal #2 Phase: ZB-MR1  
 Signal #1 Info : 30M x 0.32mm x0.2 Signal #2 Info : 30M x 0.32mm x0.5µm

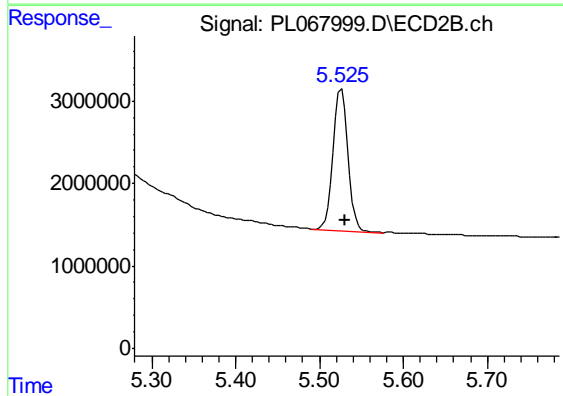




#1 Tetrachloro-m-xylene

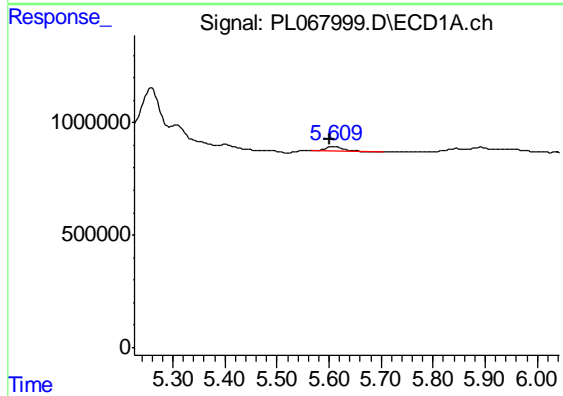
R.T.: 4.475 min  
 Delta R.T.: -0.006 min  
 Response: 11492018  
 Conc: 20.90 ng/ml

Instrument :  
 ECD\_L  
 ClientSampleId :  
 SOIL-BANK-5



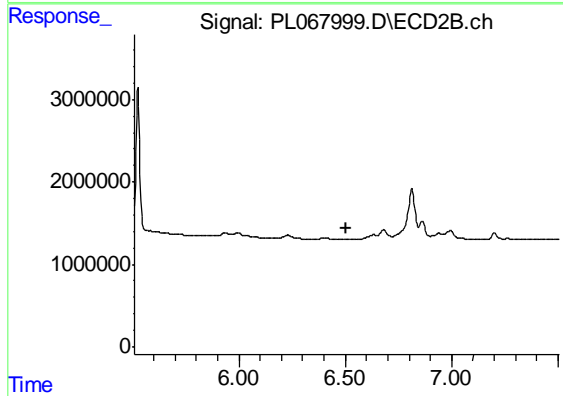
#1 Tetrachloro-m-xylene

R.T.: 5.526 min  
 Delta R.T.: -0.005 min  
 Response: 21141386  
 Conc: 22.43 ng/ml



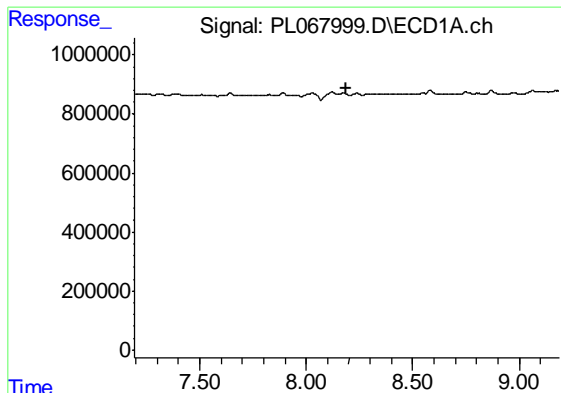
#3 gamma-BHC (Lindane)

R.T.: 5.610 min  
 Delta R.T.: 0.010 min  
 Response: 489353  
 Conc: 0.65 ng/ml



#3 gamma-BHC (Lindane)

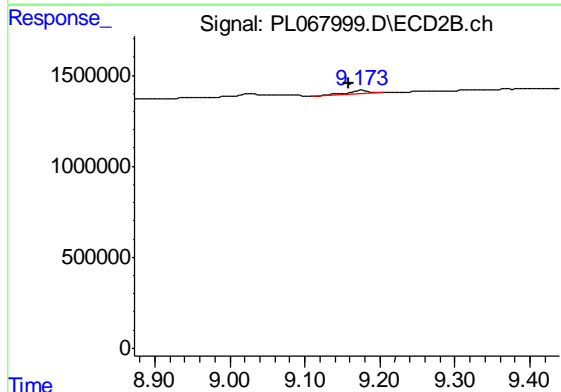
R.T.: 0.000 min  
 Exp R.T. : 6.507 min  
 Response: 0  
 Conc: N.D.



#15 Endosulfan II

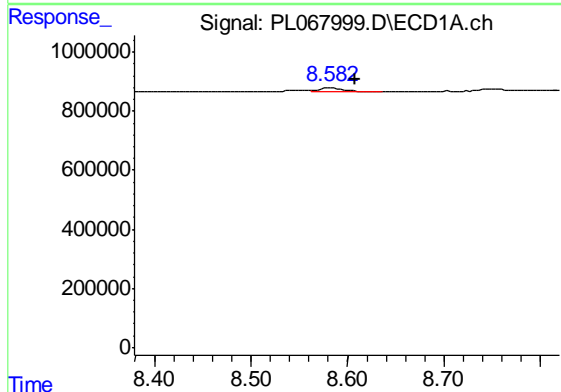
R.T.: 0.000 min  
 Exp R.T. : 8.190 min  
 Response: 0  
 Conc: N.D.

Instrument :  
 ECD\_L  
 ClientSampleId :  
 SOIL-BANK-5



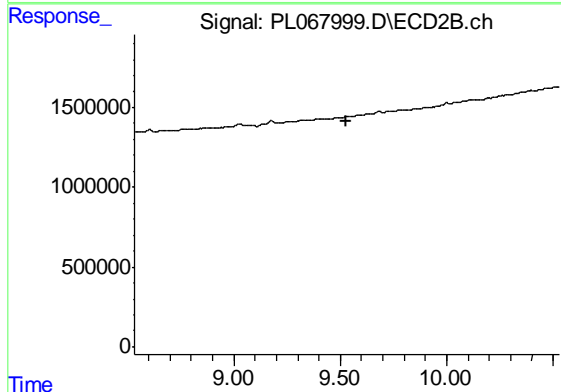
#15 Endosulfan II

R.T.: 9.176 min  
 Delta R.T.: 0.017 min  
 Response: 434434  
 Conc: 0.54 ng/ml



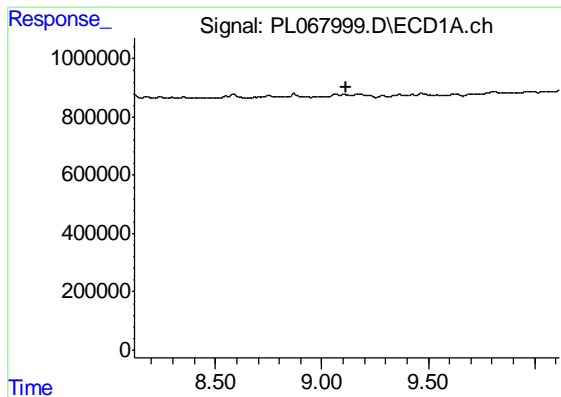
#19 Endosulfan Sulfate

R.T.: 8.583 min  
 Delta R.T.: -0.025 min  
 Response: 223066  
 Conc: 0.35 ng/ml



#19 Endosulfan Sulfate

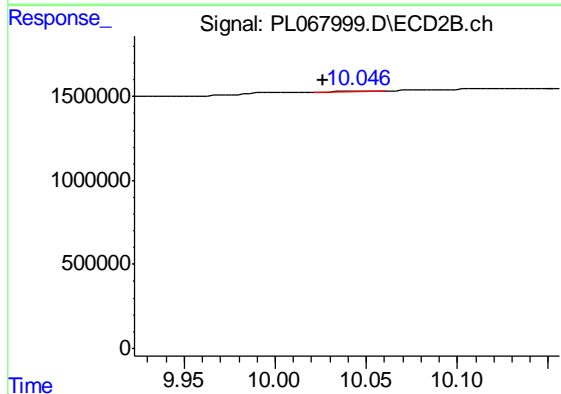
R.T.: 0.000 min  
 Exp R.T. : 9.530 min  
 Response: 0  
 Conc: N.D.



#21 Endrin ketone

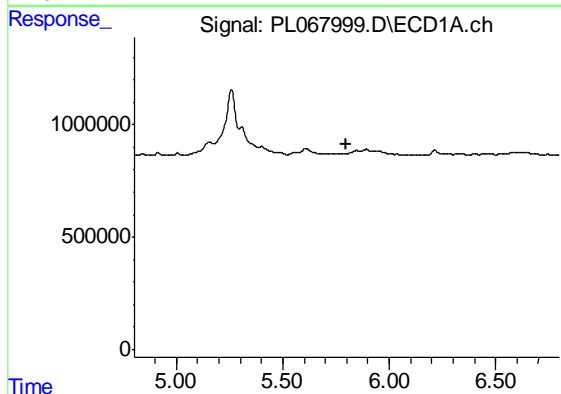
R.T.: 0.000 min  
 Exp R.T. : 9.118 min  
 Response: 0  
 Conc: N.D.

Instrument :  
 ECD\_L  
 ClientSampleId :  
 SOIL-BANK-5



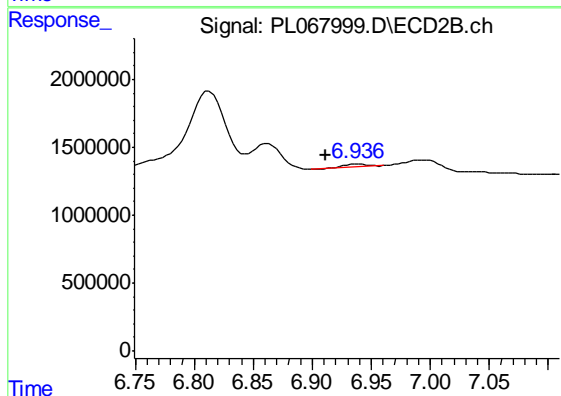
#21 Endrin ketone

R.T.: 10.049 min  
 Delta R.T.: 0.023 min  
 Response: 109902  
 Conc: 0.12 ng/ml



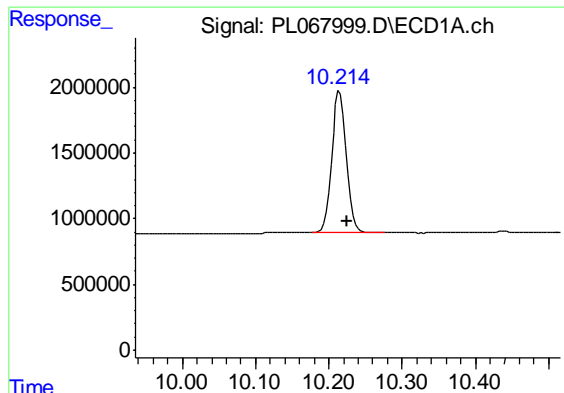
#23 Chlordane-1

R.T.: 0.000 min  
 Exp R.T. : 5.800 min  
 Response: 0  
 Conc: N.D.



#23 Chlordane-1

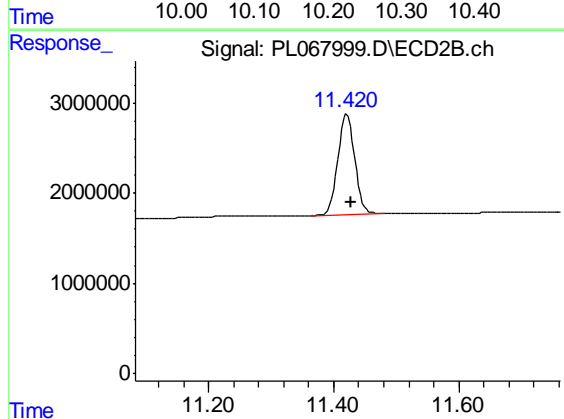
R.T.: 6.938 min  
 Delta R.T.: 0.026 min  
 Response: 105172  
 Conc: 3.72 ng/ml



#28 Decachlorobiphenyl

R.T.: 10.215 min  
Delta R.T.: -0.009 min  
Response: 15008893  
Conc: 21.18 ng/ml

Instrument :  
ECD\_L  
ClientSampleId :  
SOIL-BANK-5



#28 Decachlorobiphenyl

R.T.: 11.421 min  
Delta R.T.: -0.008 min  
Response: 20975282  
Conc: 21.06 ng/ml