

Data Path : Z:\pestpcbsrv\HPCHEM1\ECD_L\Data\PL070822\
 Data File : PL076344.D
 Signal(s) : Signal #1: ECD1A.ch Signal #2: ECD2B.ch
 Acq On : 08 Jul 2022 15:02
 Operator : AR\AJ
 Sample : PCHLORICC250
 Misc :
 ALS Vial : 13 Sample Multiplier: 1

Instrument :
 ECD_L
 ClientSampleId :

Integration File signal 1: autoint1.e
 Integration File signal 2: autoint2.e
 Quant Time: Jul 08 16:30:09 2022
 Quant Method : Z:\pestpcbsrv\HPCHEM1\ECD_L\methods\PL070822.M
 Quant Title : GC Extractables
 QLast Update : Fri Jul 08 16:27:05 2022
 Response via : Initial Calibration
 Integrator: ChemStation

Volume Inj. : 1 µl
 Signal #1 Phase : ZB-MR2 Signal #2 Phase: ZB-MR1
 Signal #1 Info : 30M x 0.32mm x0.2 Signal #2 Info : 30M x 0.32mm x0.5µm

Compound	RT#1	RT#2	Resp#1	Resp#2	ng/ml	ng/ml

System Monitoring Compounds						
1) SA Tetrachlo...	5.646	4.627	15609934	52011983	24.253	23.960
28) SA Decachlor...	11.636	10.367	13365771	37472965	25.545	25.222
Target Compounds						
23) Chlordane-1	7.038	5.946	7680746	15091914	343.343	274.550
24) Chlordane-2	7.631	6.631	6099232	15643222	244.480	241.519
25) Chlordane-3	8.393	7.330	17304425	41051974	195.306	237.246
26) Chlordane-4	8.475	7.398	26513512	44521418	243.663	239.531
27) Chlordane-5	9.367	8.109	4673655	8918288	242.807	177.987 #

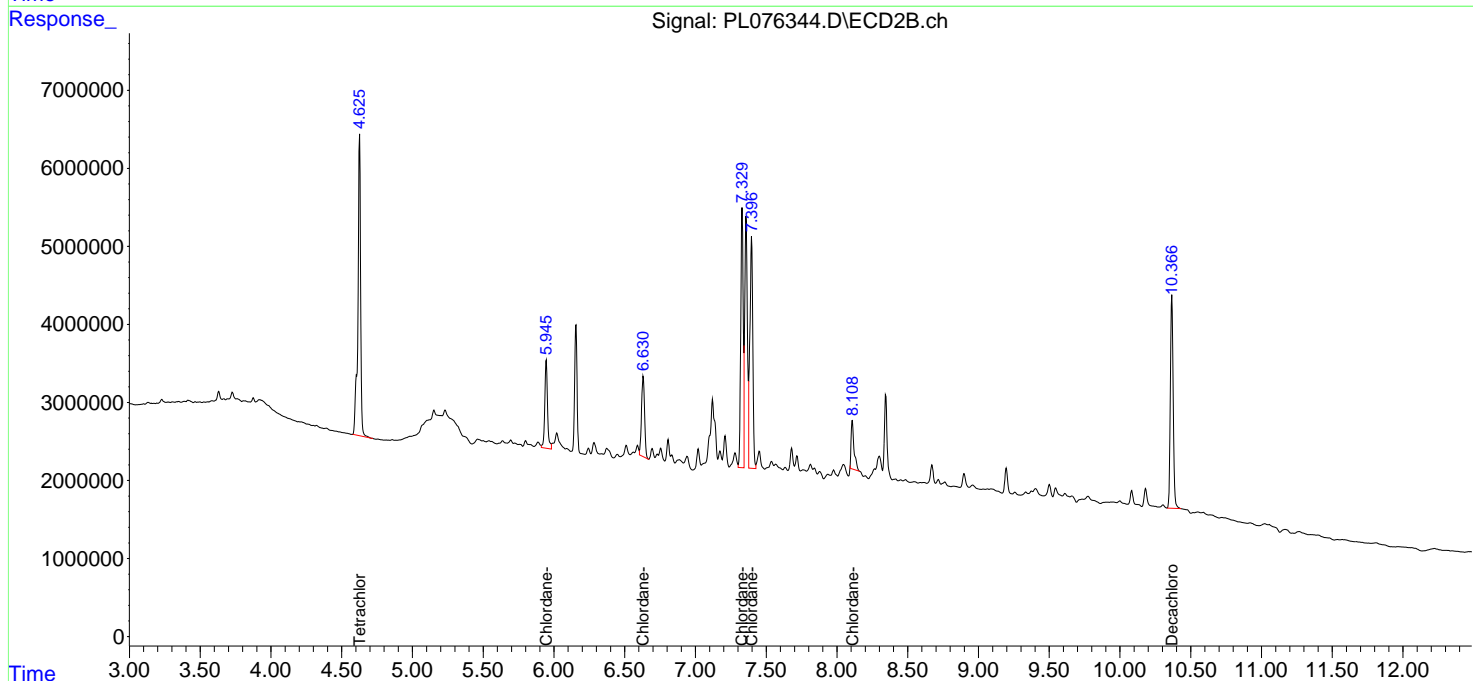
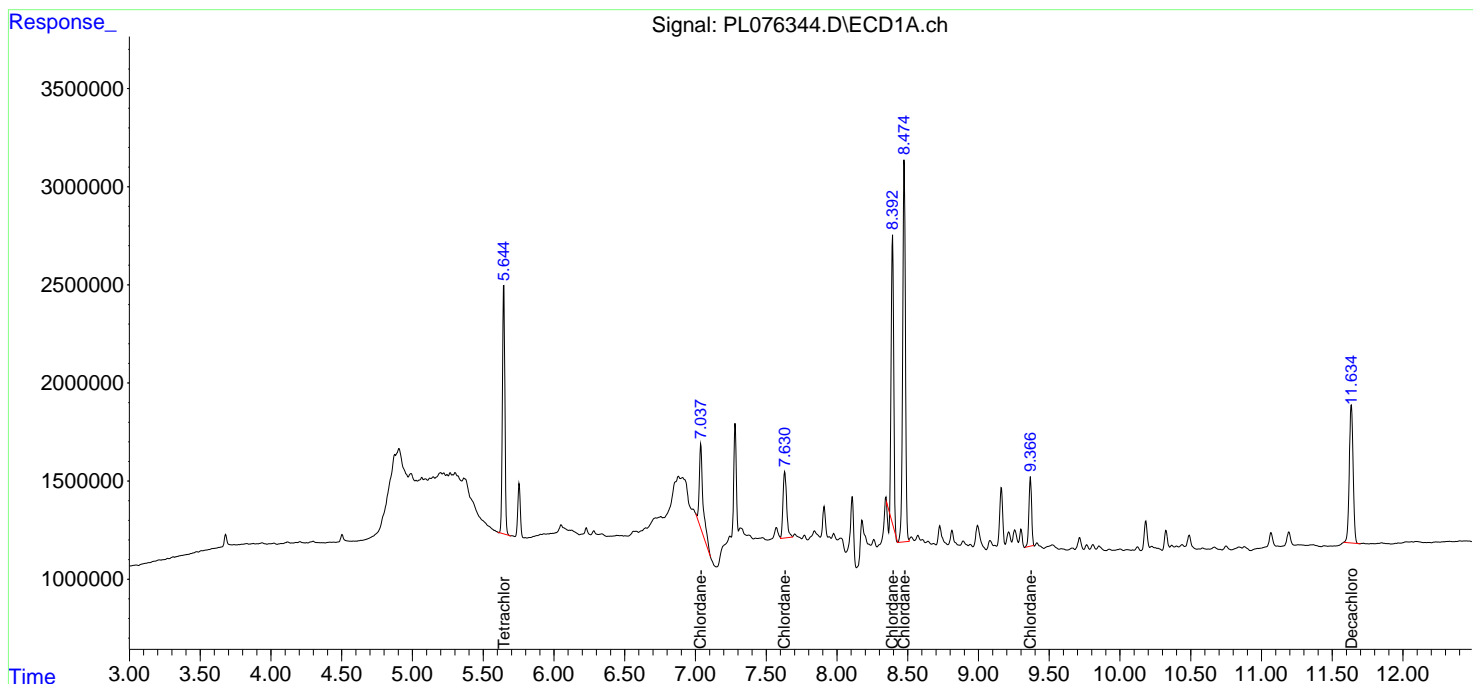
(f)=RT Delta > 1/2 Window (#)=Amounts differ by > 25% (m)=manual int.

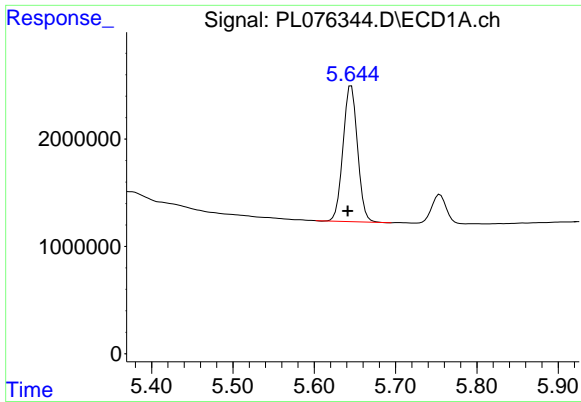
Data Path : Z:\pestpcbsrv\HPCHEM1\ECD_L\Data\PL070822\
 Data File : PL076344.D
 Signal(s) : Signal #1: ECD1A.ch Signal #2: ECD2B.ch
 Acq On : 08 Jul 2022 15:02
 Operator : AR\AJ
 Sample : PCHLORICC250
 Misc :
 ALS Vial : 13 Sample Multiplier: 1

Instrument :
 ECD_L
 ClientSampleId :

Integration File signal 1: autoint1.e
 Integration File signal 2: autoint2.e
 Quant Time: Jul 08 16:30:09 2022
 Quant Method : Z:\pestpcbsrv\HPCHEM1\ECD_L\methods\PL070822.M
 Quant Title : GC Extractables
 QLast Update : Fri Jul 08 16:27:05 2022
 Response via : Initial Calibration
 Integrator: ChemStation

Volume Inj. : 1 µl
 Signal #1 Phase : ZB-MR2 Signal #2 Phase: ZB-MR1
 Signal #1 Info : 30M x 0.32mm x0.2 Signal #2 Info : 30M x 0.32mm x0.5µm

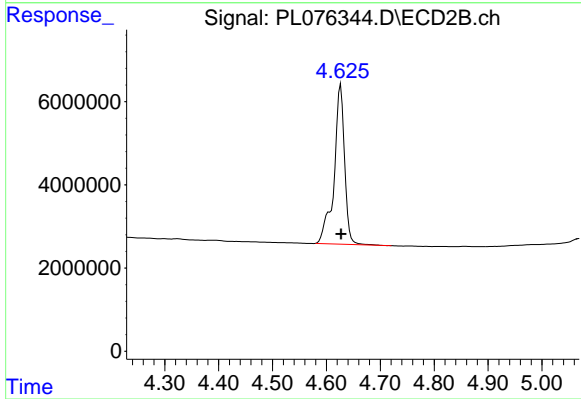




#1 Tetrachloro-m-xylene

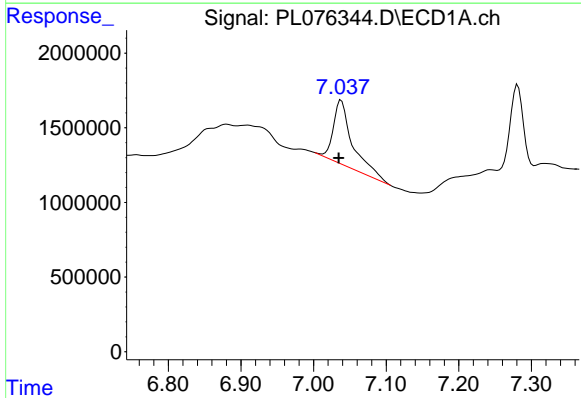
R.T.: 5.646 min
 Delta R.T.: 0.005 min
 Response: 15609934
 Conc: 24.25 ng/ml

Instrument :
 ECD_L
 ClientSampleId :



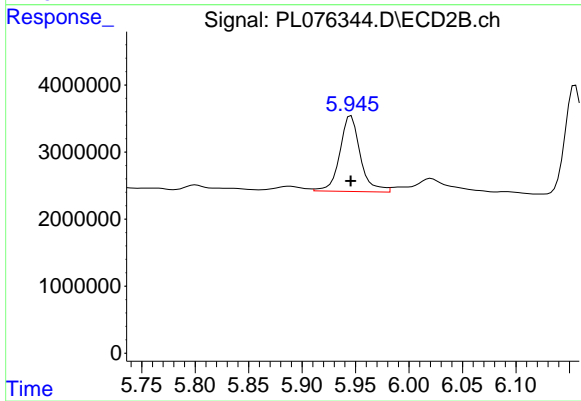
#1 Tetrachloro-m-xylene

R.T.: 4.627 min
 Delta R.T.: 0.000 min
 Response: 52011983
 Conc: 23.96 ng/ml



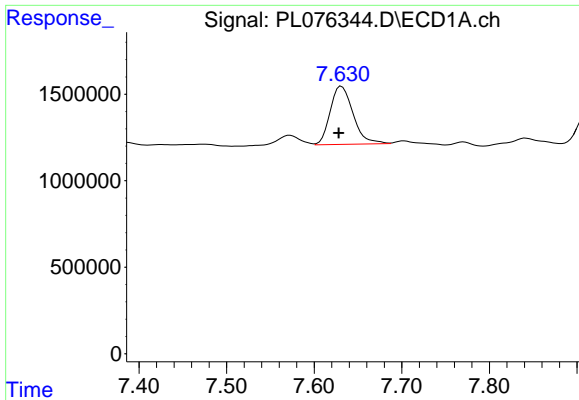
#23 Chlordane-1

R.T.: 7.038 min
 Delta R.T.: 0.004 min
 Response: 7680746
 Conc: 343.34 ng/ml



#23 Chlordane-1

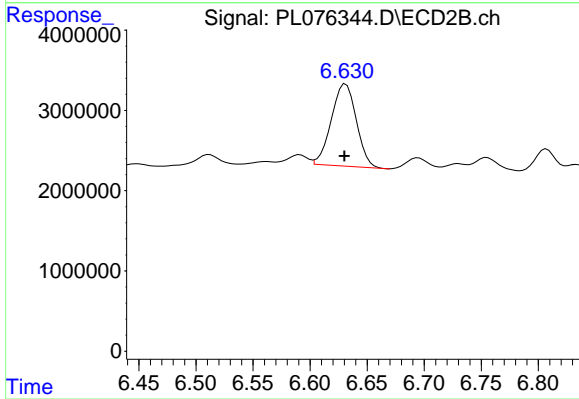
R.T.: 5.946 min
 Delta R.T.: 0.000 min
 Response: 15091914
 Conc: 274.55 ng/ml



#24 Chlordane-2

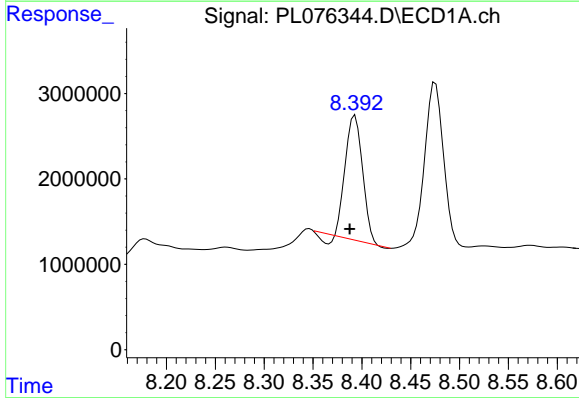
R.T.: 7.631 min
 Delta R.T.: 0.003 min
 Response: 6099232
 Conc: 244.48 ng/ml

Instrument :
 ECD_L
 ClientSampleId :



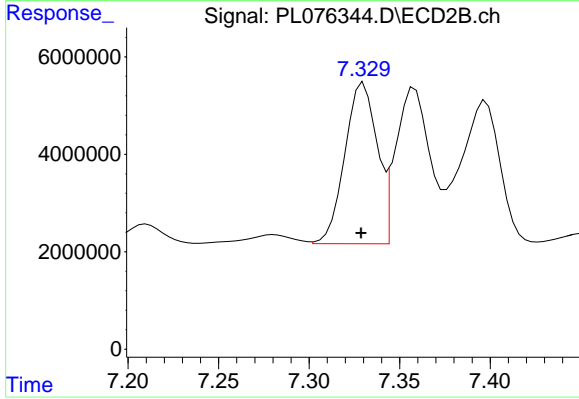
#24 Chlordane-2

R.T.: 6.631 min
 Delta R.T.: 0.001 min
 Response: 15643222
 Conc: 241.52 ng/ml



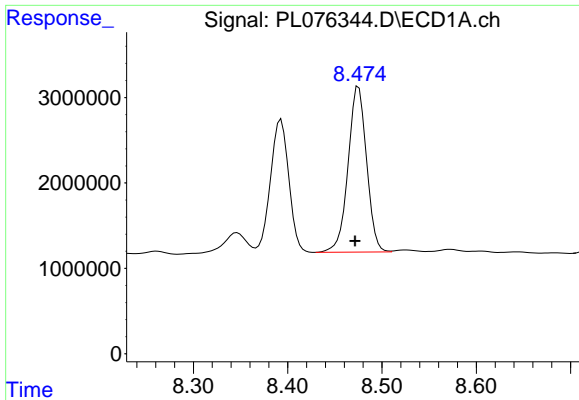
#25 Chlordane-3

R.T.: 8.393 min
 Delta R.T.: 0.005 min
 Response: 17304425
 Conc: 195.31 ng/ml



#25 Chlordane-3

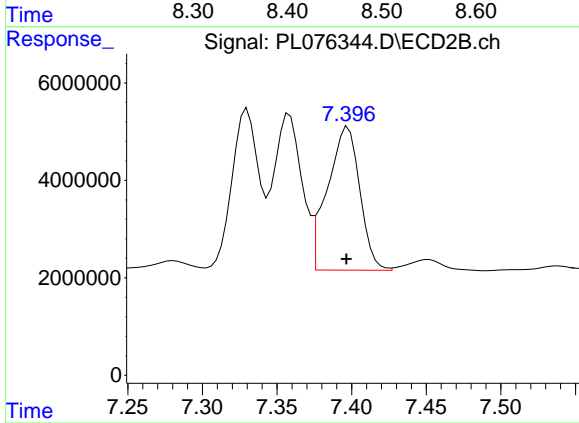
R.T.: 7.330 min
 Delta R.T.: 0.001 min
 Response: 41051974
 Conc: 237.25 ng/ml



#26 Chlordane-4

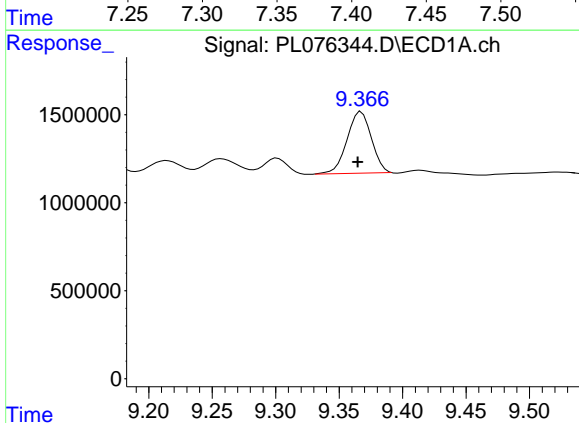
R.T.: 8.475 min
 Delta R.T.: 0.004 min
 Response: 26513512
 Conc: 243.66 ng/ml

Instrument :
 ECD_L
 ClientSampleId :



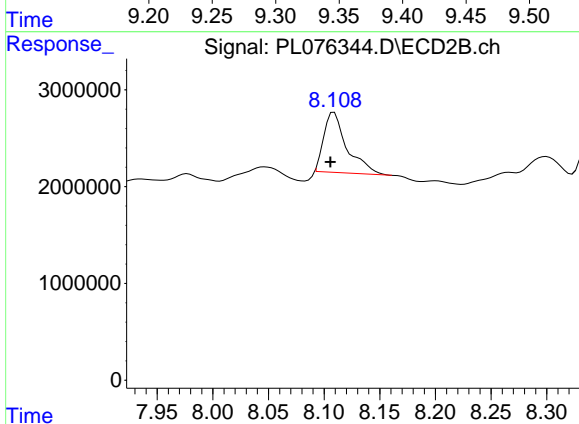
#26 Chlordane-4

R.T.: 7.398 min
 Delta R.T.: 0.000 min
 Response: 44521418
 Conc: 239.53 ng/ml



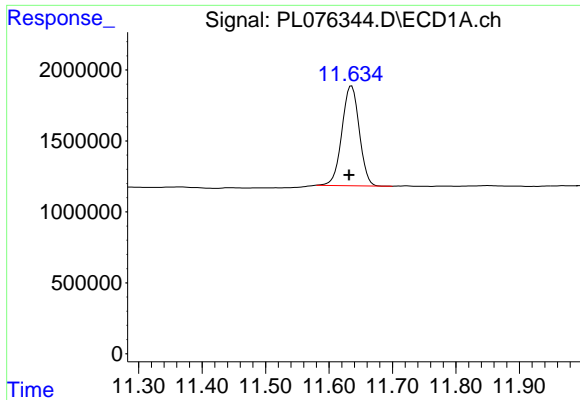
#27 Chlordane-5

R.T.: 9.367 min
 Delta R.T.: 0.003 min
 Response: 4673655
 Conc: 242.81 ng/ml



#27 Chlordane-5

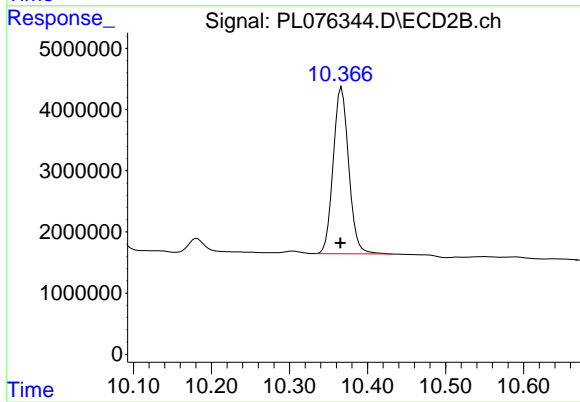
R.T.: 8.109 min
 Delta R.T.: 0.003 min
 Response: 8918288
 Conc: 177.99 ng/ml



#28 Decachlorobiphenyl

R.T.: 11.636 min
Delta R.T.: 0.004 min
Response: 13365771
Conc: 25.55 ng/ml

Instrument :
ECD_L
ClientSampleId :



#28 Decachlorobiphenyl

R.T.: 10.367 min
Delta R.T.: 0.002 min
Response: 37472965
Conc: 25.22 ng/ml