

Data Path : Z:\pestpcbsrv\HPCHEM1\ECD_L\Data\PL070822\
 Data File : PL076343.D
 Signal(s) : Signal #1: ECD1A.ch Signal #2: ECD2B.ch
 Acq On : 08 Jul 2022 14:35
 Operator : AR\AJ
 Sample : PCHLORICC500
 Misc :
 ALS Vial : 12 Sample Multiplier: 1

Instrument :
 ECD_L
ClientSampleId :
 PCHLORICC500

Manual Integrations
APPROVED
 Reviewed By :Abdul Mirza 07/11/2022
 Supervised By :Ankita Jodhani 07/11/2022

Integration File signal 1: autoint1.e
 Integration File signal 2: autoint2.e
 Quant Time: Jul 08 16:29:49 2022
 Quant Method : Z:\pestpcbsrv\HPCHEM1\ECD_L\methods\PL070822.M
 Quant Title : GC Extractables
 QLast Update : Fri Jul 08 16:27:05 2022
 Response via : Initial Calibration
 Integrator: ChemStation

Volume Inj. : 1 µl
 Signal #1 Phase : ZB-MR2 Signal #2 Phase: ZB-MR1
 Signal #1 Info : 30M x 0.32mm x0.2 Signal #2 Info : 30M x 0.32mm x0.5µm

| Compound | RT#1 | RT#2 | Resp#1 | Resp#2 | ng/ml | ng/ml |
|-----------------------------|--------|--------|----------|----------|----------|----------|
| ----- | | | | | | |
| System Monitoring Compounds | | | | | | |
| 1) SA Tetrachlo... | 5.641 | 4.627 | 32181149 | 108.5E6 | 50.000 | 50.000 |
| 28) SA Decachlor... | 11.632 | 10.365 | 26160799 | 74285711 | 50.000 | 50.000 |
| Target Compounds | | | | | | |
| 23) Chlordane-1 | 7.034 | 5.945 | 11185248 | 27484773 | 500.000 | 500.000 |
| 24) Chlordane-2 | 7.628 | 6.630 | 12473891 | 32385136 | 500.000 | 500.000 |
| 25) Chlordane-3 | 8.388 | 7.329 | 43877909 | 86517816 | 495.227m | 500.000 |
| 26) Chlordane-4 | 8.472 | 7.397 | 54406071 | 92934645 | 500.000 | 500.000 |
| 27) Chlordane-5 | 9.365 | 8.105 | 9624212 | 25755915 | 500.000 | 514.024m |
| ----- | | | | | | |

(f)=RT Delta > 1/2 Window (#)=Amounts differ by > 25% (m)=manual int.

Data Path : Z:\pestpcbsrv\HPCHEM1\ECD_L\Data\PL070822\
 Data File : PL076343.D
 Signal(s) : Signal #1: ECD1A.ch Signal #2: ECD2B.ch
 Acq On : 08 Jul 2022 14:35
 Operator : AR\AJ
 Sample : PCHLORICC500
 Misc :
 ALS Vial : 12 Sample Multiplier: 1

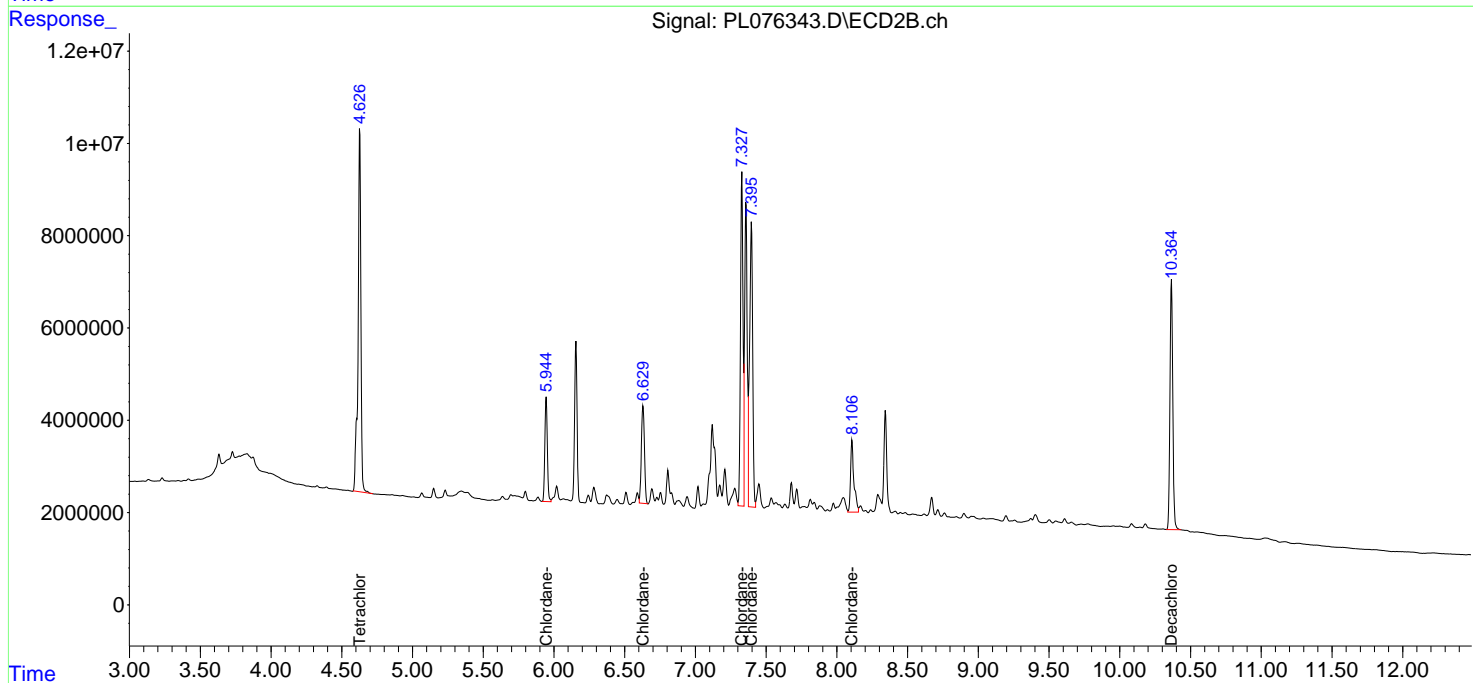
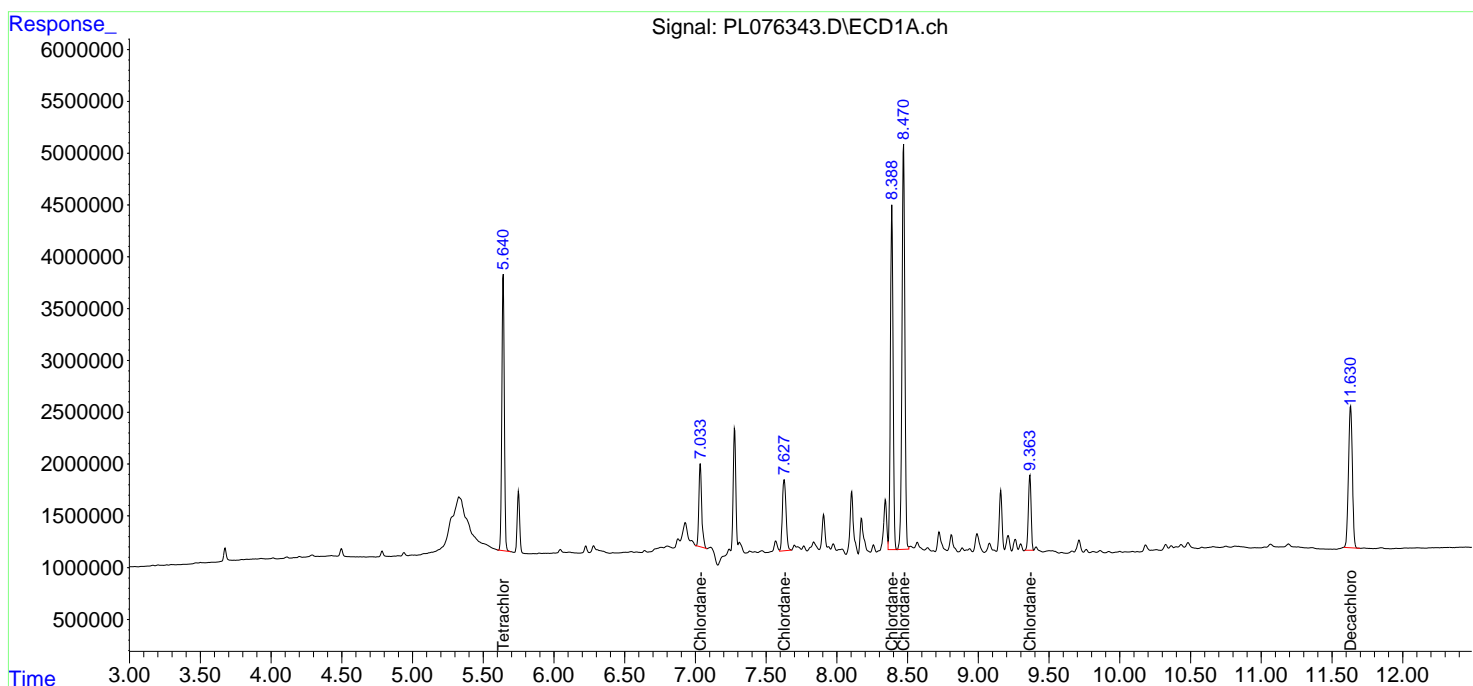
Instrument :
 ECD_L
ClientSampleId :
 PCHLORICC500

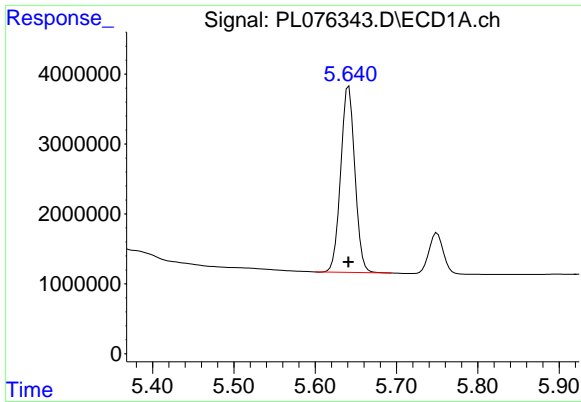
Manual Integrations
APPROVED

Reviewed By :Abdul Mirza 07/11/2022
 Supervised By :Ankita Jodhani 07/11/2022

Integration File signal 1: autoint1.e
 Integration File signal 2: autoint2.e
 Quant Time: Jul 08 16:29:49 2022
 Quant Method : Z:\pestpcbsrv\HPCHEM1\ECD_L\methods\PL070822.M
 Quant Title : GC Extractables
 QLast Update : Fri Jul 08 16:27:05 2022
 Response via : Initial Calibration
 Integrator: ChemStation

Volume Inj. : 1 µl
 Signal #1 Phase : ZB-MR2 Signal #2 Phase: ZB-MR1
 Signal #1 Info : 30M x 0.32mm x0.2 Signal #2 Info : 30M x 0.32mm x0.5µm



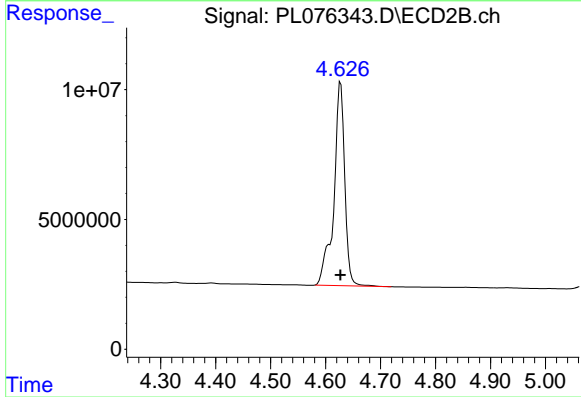


#1 Tetrachloro-m-xylene
 R.T.: 5.641 min
 Delta R.T.: 0.000 min
 Response: 32181149
 Conc: 50.00 ng/ml

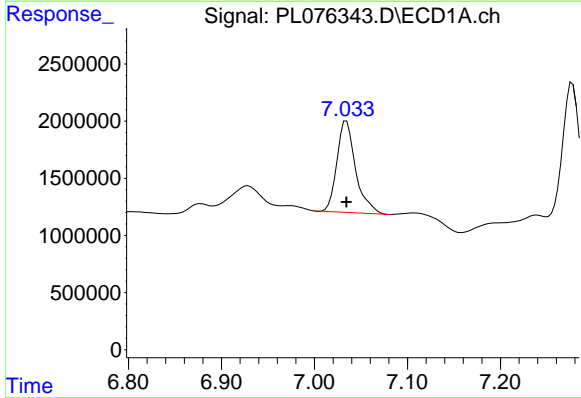
Instrument :
 ECD_L
 ClientSampleId :
 PCHLORICC500

Manual Integrations
 APPROVED

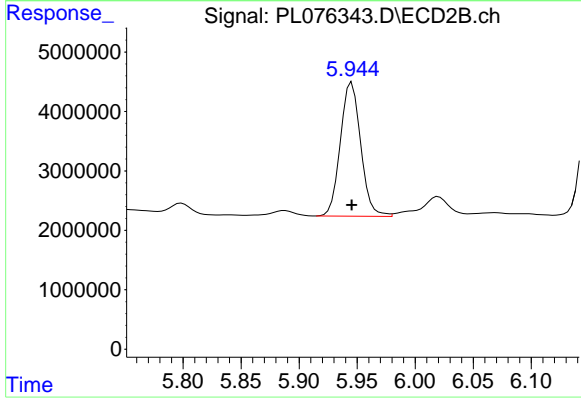
Reviewed By :Abdul Mirza 07/11/2022
 Supervised By :Ankita Jodhani 07/11/2022



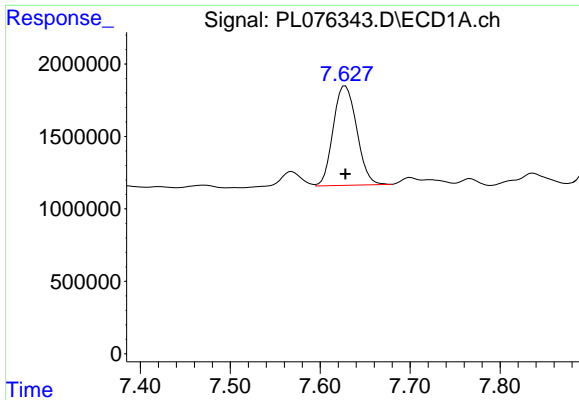
#1 Tetrachloro-m-xylene
 R.T.: 4.627 min
 Delta R.T.: 0.000 min
 Response: 108537281
 Conc: 50.00 ng/ml



#23 Chlordane-1
 R.T.: 7.034 min
 Delta R.T.: 0.000 min
 Response: 11185248
 Conc: 500.00 ng/ml



#23 Chlordane-1
 R.T.: 5.945 min
 Delta R.T.: 0.000 min
 Response: 27484773
 Conc: 500.00 ng/ml



#24 Chlordane-2

R.T.: 7.628 min
 Delta R.T.: 0.000 min
 Response: 12473891
 Conc: 500.00 ng/ml

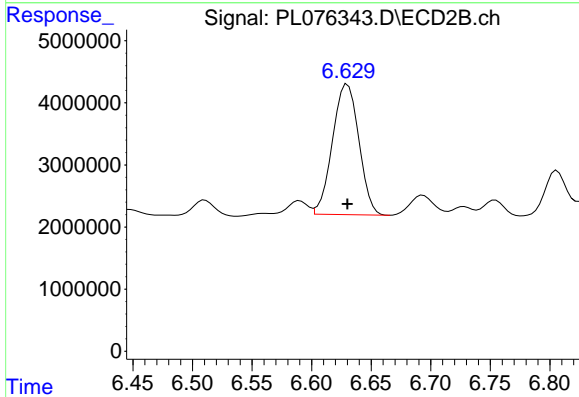
Instrument :

ECD_L

ClientSampleId :
 PCHLORICC500

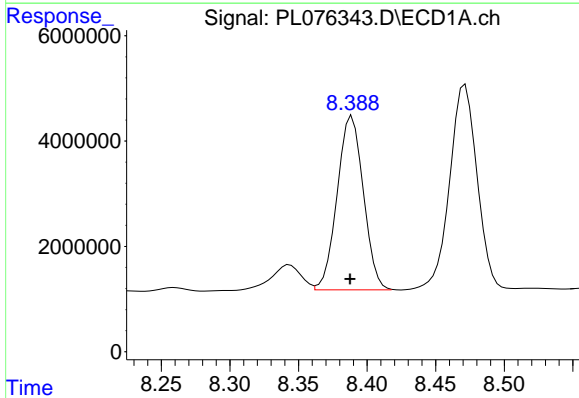
Manual Integrations
 APPROVED

Reviewed By :Abdul Mirza 07/11/2022
 Supervised By :Ankita Jodhani 07/11/2022



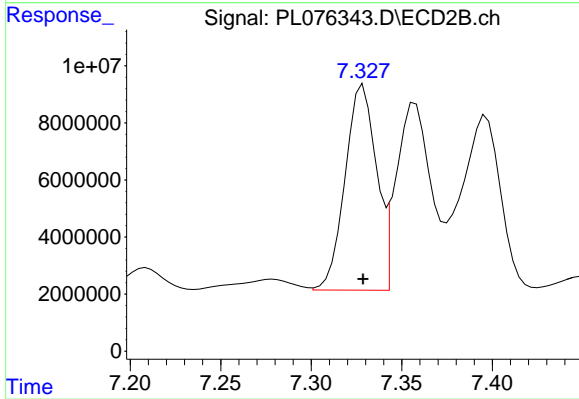
#24 Chlordane-2

R.T.: 6.630 min
 Delta R.T.: 0.000 min
 Response: 32385136
 Conc: 500.00 ng/ml



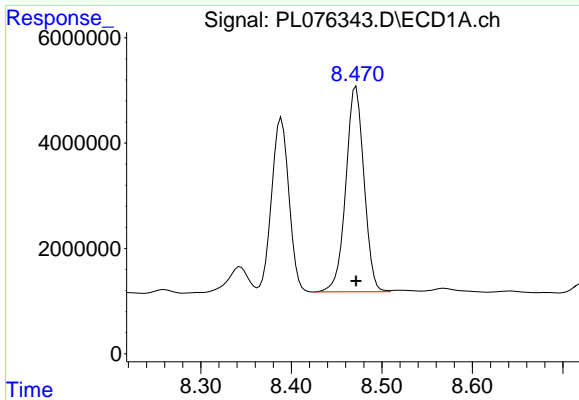
#25 Chlordane-3

R.T.: 8.388 min
 Delta R.T.: 0.000 min
 Response: 43877909
 Conc: 495.23 ng/ml m



#25 Chlordane-3

R.T.: 7.329 min
 Delta R.T.: 0.000 min
 Response: 86517816
 Conc: 500.00 ng/ml



#26 Chlordane-4

R.T.: 8.472 min
 Delta R.T.: 0.000 min
 Response: 54406071
 Conc: 500.00 ng/ml

Instrument :

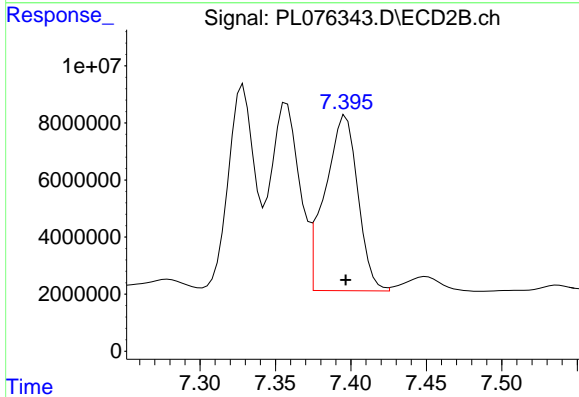
ECD_L

ClientSampleId :

PCHLORICC500

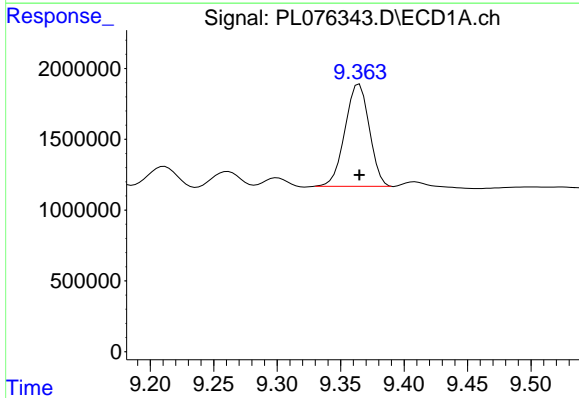
Manual Integrations
 APPROVED

Reviewed By :Abdul Mirza 07/11/2022
 Supervised By :Ankita Jodhani 07/11/2022



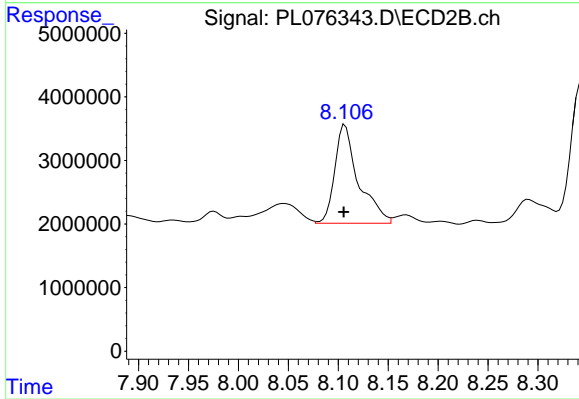
#26 Chlordane-4

R.T.: 7.397 min
 Delta R.T.: 0.000 min
 Response: 92934645
 Conc: 500.00 ng/ml



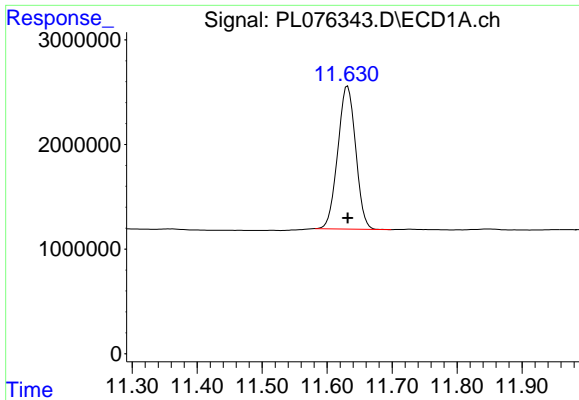
#27 Chlordane-5

R.T.: 9.365 min
 Delta R.T.: 0.000 min
 Response: 9624212
 Conc: 500.00 ng/ml



#27 Chlordane-5

R.T.: 8.105 min
 Delta R.T.: 0.000 min
 Response: 25755915
 Conc: 514.02 ng/ml m

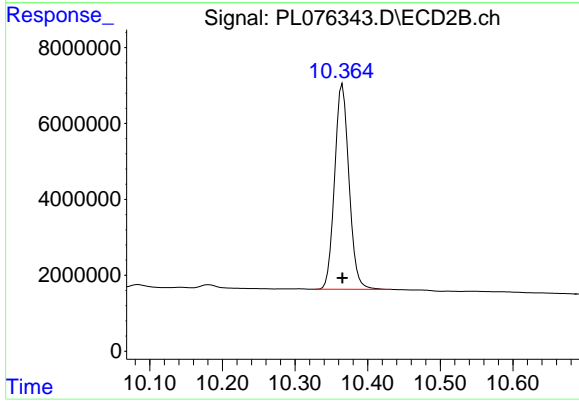


#28 Decachlorobiphenyl
R.T.: 11.632 min
Delta R.T.: 0.000 min
Response: 26160799
Conc: 50.00 ng/ml

Instrument :
ECD_L
ClientSampleId :
PCHLORICC500

Manual Integrations
APPROVED

Reviewed By :Abdul Mirza 07/11/2022
Supervised By :Ankita Jodhani 07/11/2022



#28 Decachlorobiphenyl
R.T.: 10.365 min
Delta R.T.: 0.000 min
Response: 74285711
Conc: 50.00 ng/ml