

Data Path : Z:\pestpcbsrv\HPCHEM1\ECD\_L\Data\PL071020\  
 Data File : PL059789.D  
 Signal(s) : Signal #1: ECD1A.ch Signal #2: ECD2B.ch  
 Acq On : 10 Jul 2020 13:56  
 Operator : DD\AJ  
 Sample : PSTDICC005  
 Misc :  
 ALS Vial : 9 Sample Multiplier: 1

Instrument :  
 ECD\_L  
 ClientSampleId :

Integration File signal 1: autoint1.e  
 Integration File signal 2: autoint2.e  
 Quant Time: Jul 10 15:21:10 2020  
 Quant Method : Z:\pestpcbsrv\HPCHEM1\ECD\_L\methods\PL071020.M  
 Quant Title : GC Extractables  
 QLast Update : Fri Jul 10 15:19:32 2020  
 Response via : Initial Calibration  
 Integrator: ChemStation

Volume Inj. : 1 µl  
 Signal #1 Phase : ZB-MR2 Signal #2 Phase: ZB-MR1  
 Signal #1 Info : 30M x 0.32mm x0.2 Signal #2 Info : 30M x 0.32mm x0.5µm

	Compound	RT#1	RT#2	Resp#1	Resp#2	ng/ml	ng/ml
-----							
System Monitoring Compounds							
1)	SA Tetrachlo...	3.465	4.012	9814621	13111467	5.005	4.780
28)	SA Decachlor...	8.230	9.102	8821869	11415876	5.379	5.450
Target Compounds							
2)	A alpha-BHC	3.902	4.401	13645728	17452492	4.619	4.301
3)	MA gamma-BHC...	4.186	4.686	11449700	16930257	4.495	4.471
4)	MA Heptachlor	4.489	5.198	10977796	17036903	4.866	4.985
5)	MB Aldrin	4.738	5.504	9511465	15598641	4.721	4.868
6)	B beta-BHC	4.437	4.857	5450933	7130487	5.327	4.517
7)	B delta-BHC	4.641	5.074	10111665	12727269	4.400	3.772
8)	B Heptachlo...	5.182	5.891	9138431	12446720	4.915	4.428
9)	A Endosulfan I	5.521	6.250	8294411	13614607	4.855	5.027
10)	B gamma-Chl...	5.410	6.127	8939323	14673540	4.862	5.087
11)	B alpha-Chl...	5.468	6.200	8915542	14379544	4.878	4.964
12)	B 4,4'-DDE	5.634	6.357	7712312	13271043	4.484	4.870
13)	MA Dieldrin	5.764	6.507	8473454	13583856	4.724	4.802
14)	MA Endrin	6.022	6.726	6925768	9614000	4.857	4.587
15)	B Endosulfa...	6.295	6.935	9081299	14103565	5.450	5.501
16)	A 4,4'-DDD	6.150	6.848	2177353	13843325	1.429	5.817 #
17)	MA 4,4'-DDT	6.392	7.148	6158237	8872373	4.742	4.438
18)	B Endrin al...	6.463	7.060	7886600	12204563	5.492	5.468
19)	B Endosulfa...	6.677	7.283	9203111	12015399	5.760	5.024
20)	A Methoxychlor	6.939	7.608	3311728	5486006	4.397	4.818
21)	B Endrin ke...	7.167	7.755	9211486	13106417	4.722	4.870
22)	Mirex	7.358	8.212	9410837	10295657	6.604	5.532
-----							

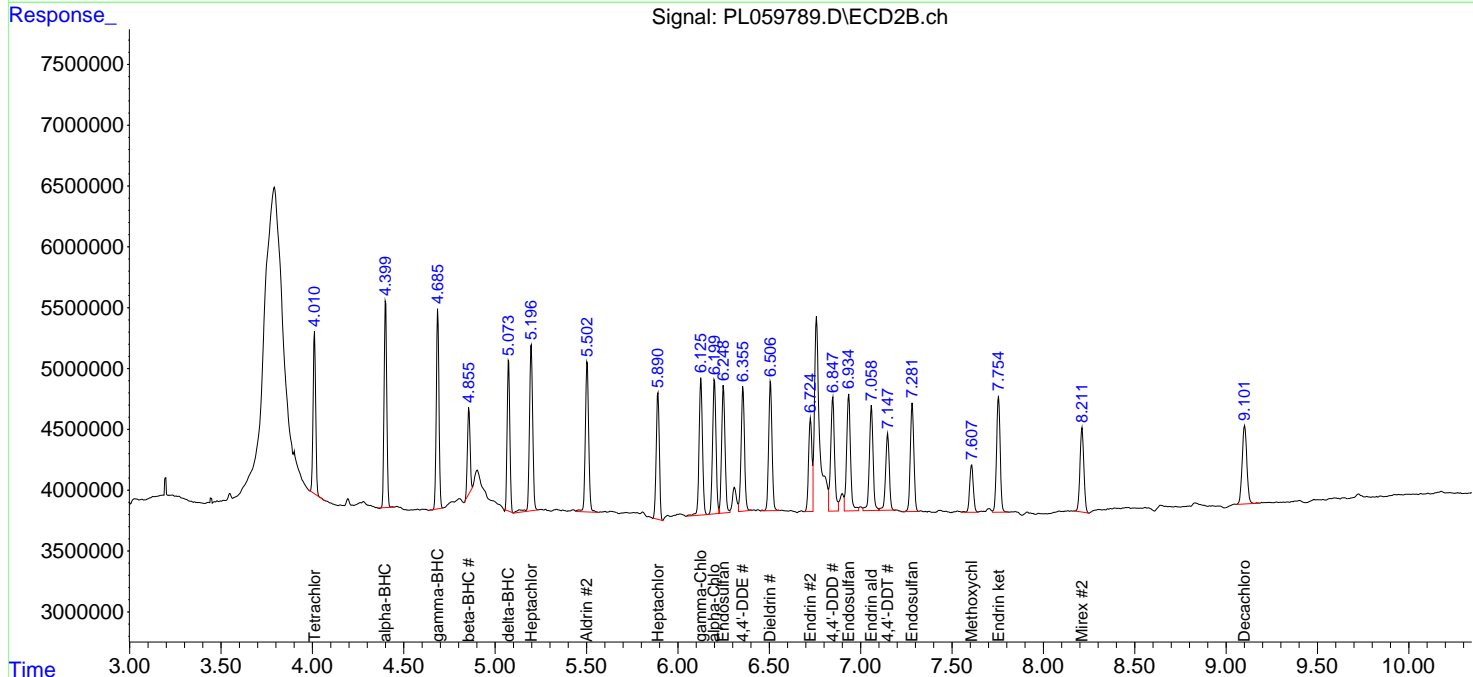
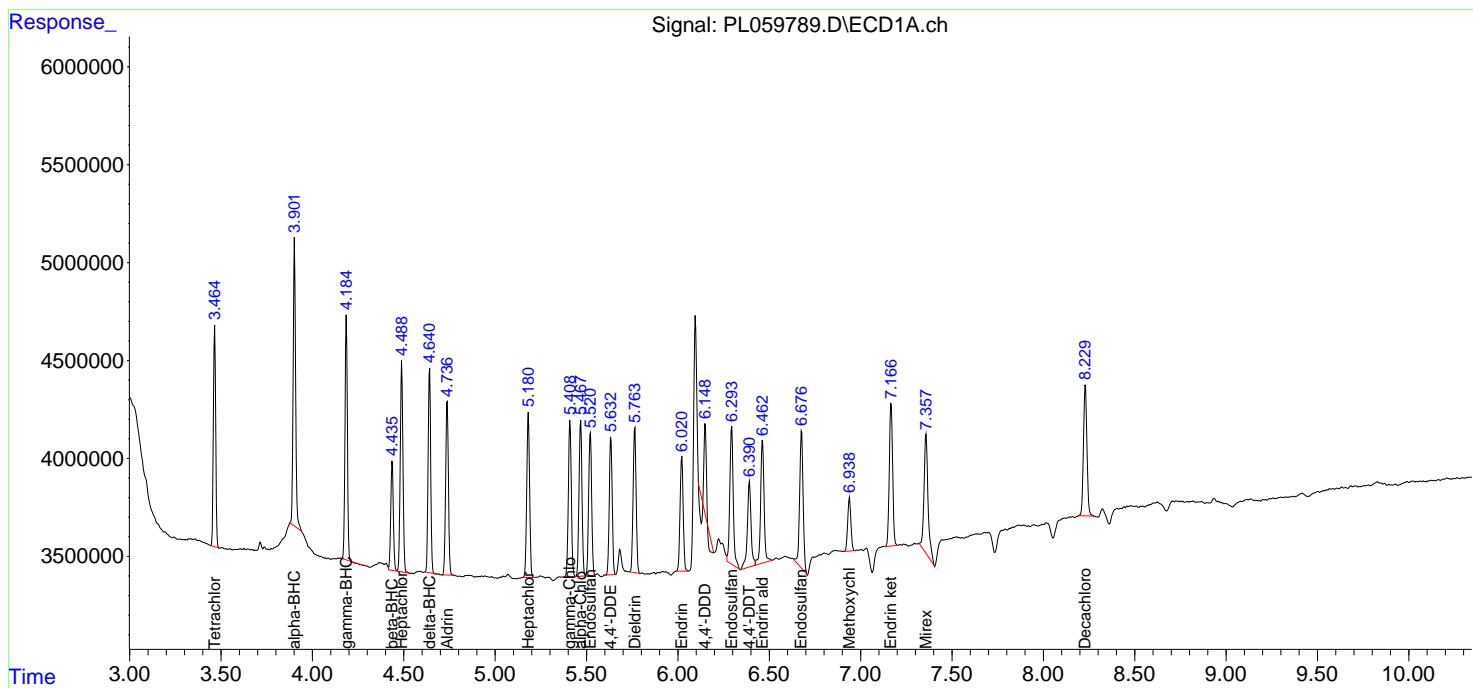
(f)=RT Delta > 1/2 Window (#)=Amounts differ by > 25% (m)=manual int.

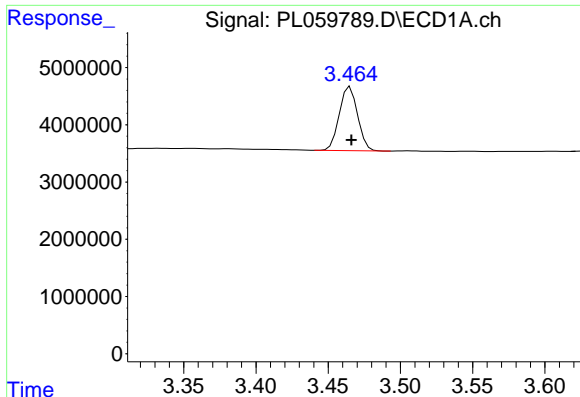
Data Path : Z:\pestpcbsrv\HPCHEM1\ECD\_L\Data\PL071020\  
 Data File : PL059789.D  
 Signal(s) : Signal #1: ECD1A.ch Signal #2: ECD2B.ch  
 Acq On : 10 Jul 2020 13:56  
 Operator : DD\AJ  
 Sample : PSTDICC005  
 Misc :  
 ALS Vial : 9 Sample Multiplier: 1

Instrument :  
 ECD\_L  
 ClientSampled :

Integration File signal 1: autoint1.e  
 Integration File signal 2: autoint2.e  
 Quant Time: Jul 10 15:21:10 2020  
 Quant Method : Z:\pestpcbsrv\HPCHEM1\ECD\_L\methods\PL071020.M  
 Quant Title : GC Extractables  
 QLast Update : Fri Jul 10 15:19:32 2020  
 Response via : Initial Calibration  
 Integrator: ChemStation

Volume Inj. : 1 µl  
 Signal #1 Phase : ZB-MR2 Signal #2 Phase: ZB-MR1  
 Signal #1 Info : 30M x 0.32mm x0.2 Signal #2 Info : 30M x 0.32mm x0.5µm

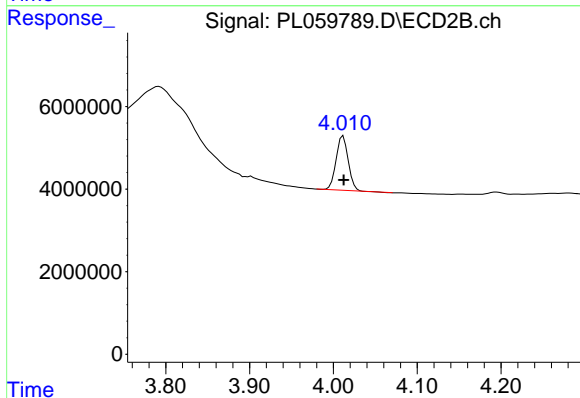




#1 Tetrachloro-m-xylene

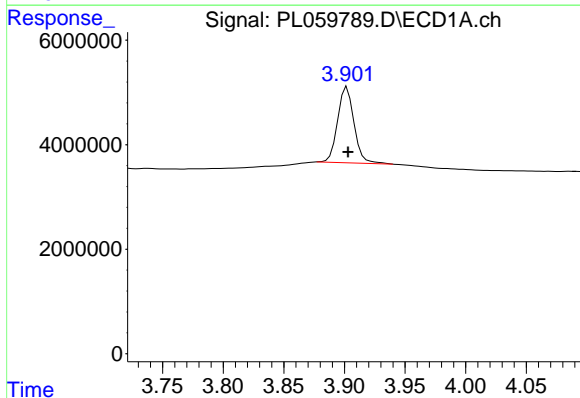
R.T.: 3.465 min  
 Delta R.T.: 0.000 min  
 Response: 9814621  
 Conc: 5.00 ng/ml

Instrument :  
 ECD\_L  
 ClientSampled :



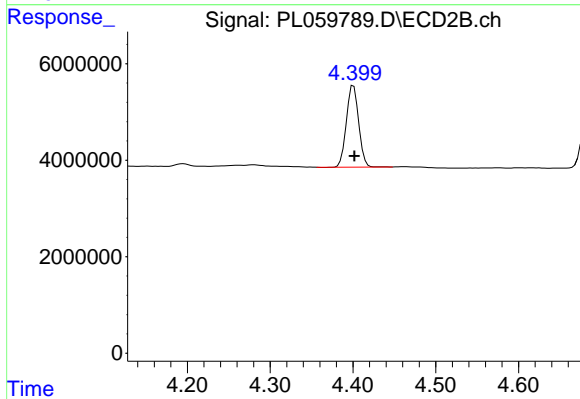
#1 Tetrachloro-m-xylene

R.T.: 4.012 min  
 Delta R.T.: 0.000 min  
 Response: 13111467  
 Conc: 4.78 ng/ml



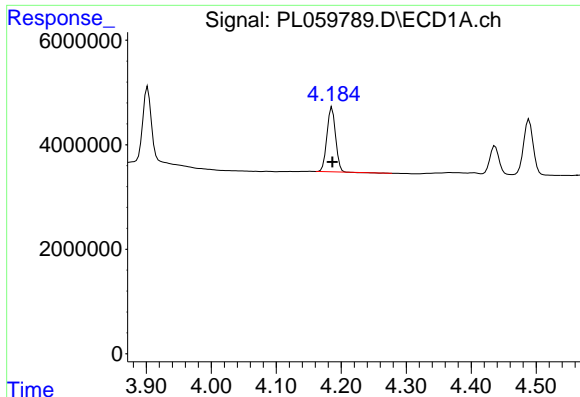
#2 alpha-BHC

R.T.: 3.902 min  
 Delta R.T.: 0.000 min  
 Response: 13645728  
 Conc: 4.62 ng/ml



#2 alpha-BHC

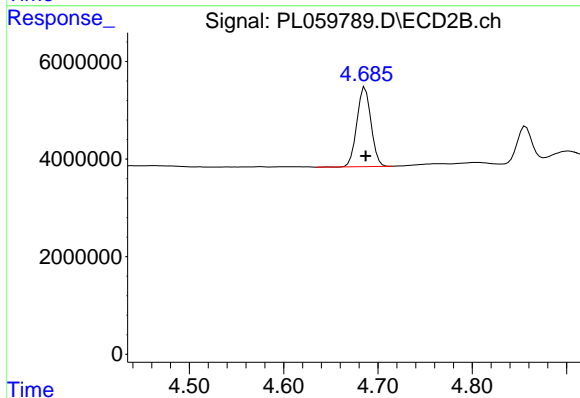
R.T.: 4.401 min  
 Delta R.T.: -0.001 min  
 Response: 17452492  
 Conc: 4.30 ng/ml



#3 gamma-BHC (Lindane)

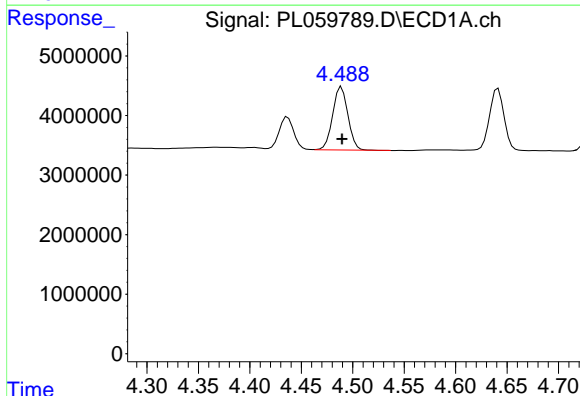
R.T.: 4.186 min  
Delta R.T.: 0.000 min  
Response: 11449700  
Conc: 4.50 ng/ml

Instrument :  
ECD\_L  
ClientSampled :



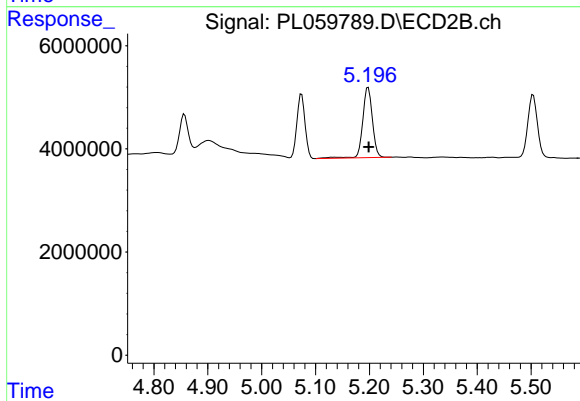
#3 gamma-BHC (Lindane)

R.T.: 4.686 min  
Delta R.T.: 0.000 min  
Response: 16930257  
Conc: 4.47 ng/ml



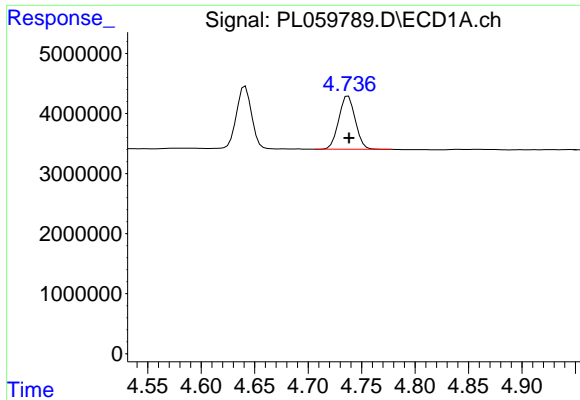
#4 Heptachlor

R.T.: 4.489 min  
Delta R.T.: 0.000 min  
Response: 10977796  
Conc: 4.87 ng/ml



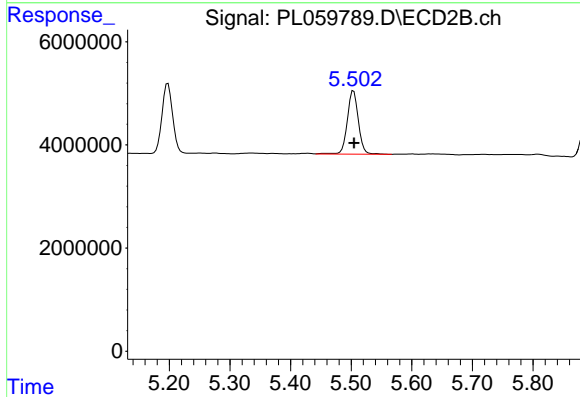
#4 Heptachlor

R.T.: 5.198 min  
Delta R.T.: 0.000 min  
Response: 17036903  
Conc: 4.98 ng/ml

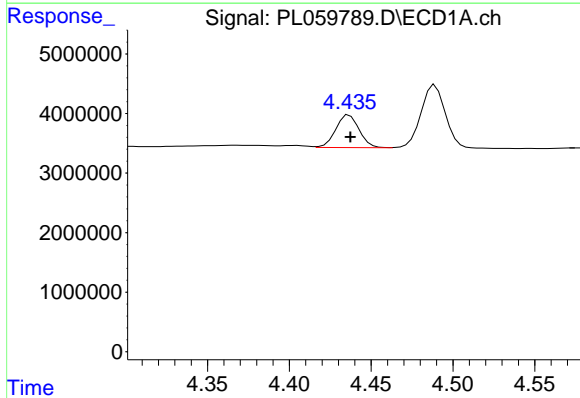


#5 Aldrin  
 R.T.: 4.738 min  
 Delta R.T.: 0.000 min  
 Response: 9511465  
 Conc: 4.72 ng/ml

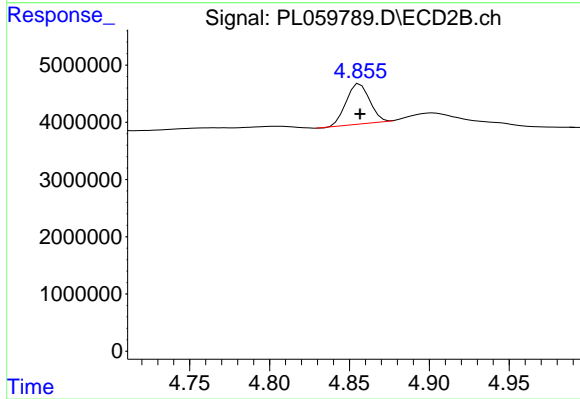
Instrument :  
 ECD\_L  
 ClientSampled :



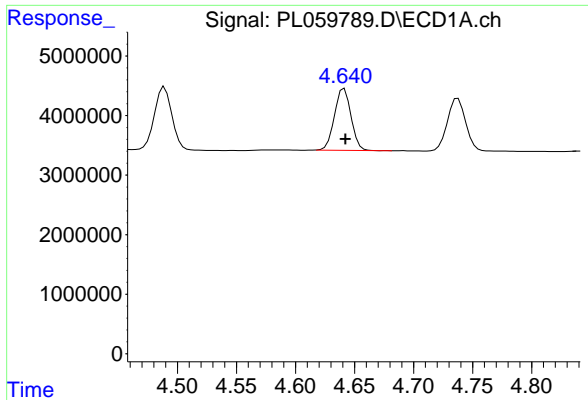
#5 Aldrin  
 R.T.: 5.504 min  
 Delta R.T.: 0.000 min  
 Response: 15598641  
 Conc: 4.87 ng/ml



#6 beta-BHC  
 R.T.: 4.437 min  
 Delta R.T.: 0.000 min  
 Response: 5450933  
 Conc: 5.33 ng/ml

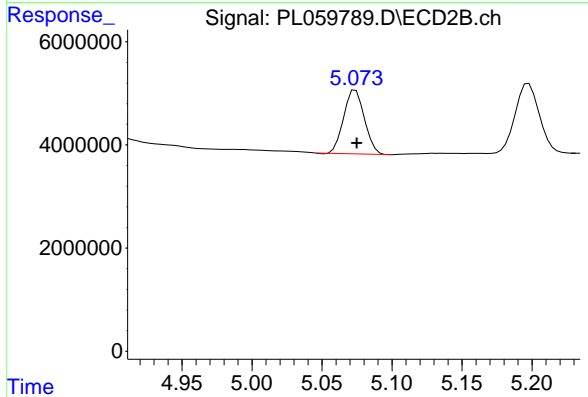


#6 beta-BHC  
 R.T.: 4.857 min  
 Delta R.T.: 0.000 min  
 Response: 7130487  
 Conc: 4.52 ng/ml

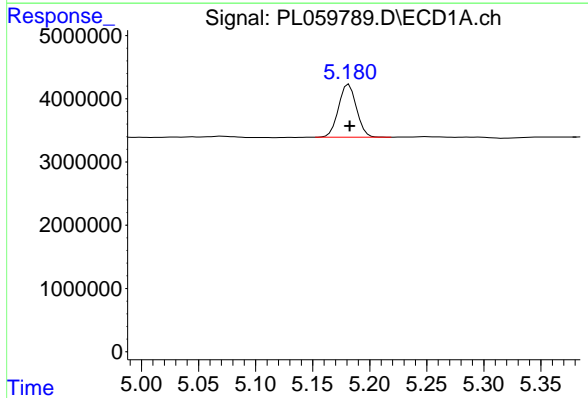


#7 delta-BHC  
R.T.: 4.641 min  
Delta R.T.: 0.000 min  
Response: 10111665  
Conc: 4.40 ng/ml

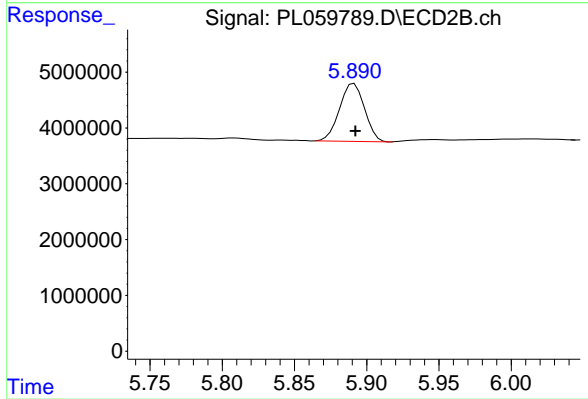
Instrument :  
ECD\_L  
ClientSampleId :



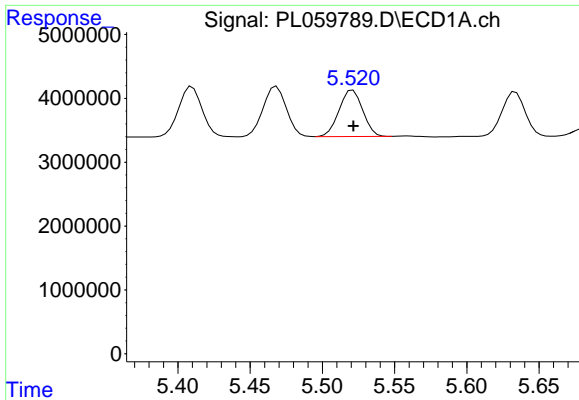
#7 delta-BHC  
R.T.: 5.074 min  
Delta R.T.: 0.000 min  
Response: 12727269  
Conc: 3.77 ng/ml



#8 Heptachlor epoxide  
R.T.: 5.182 min  
Delta R.T.: 0.000 min  
Response: 9138431  
Conc: 4.91 ng/ml

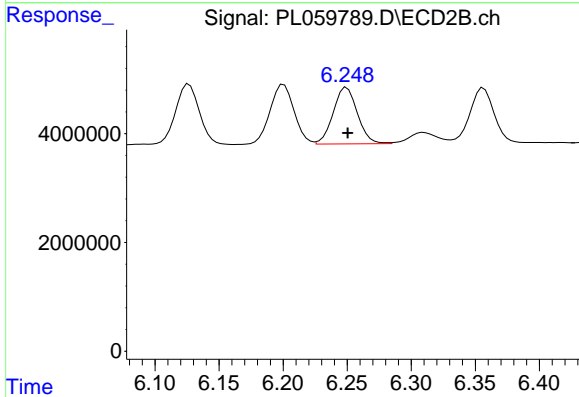


#8 Heptachlor epoxide  
R.T.: 5.891 min  
Delta R.T.: 0.000 min  
Response: 12446720  
Conc: 4.43 ng/ml

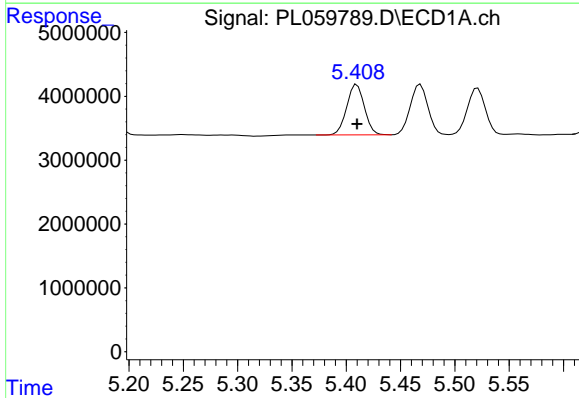


#9 Endosulfan I  
 R.T.: 5.521 min  
 Delta R.T.: 0.000 min  
 Response: 8294411  
 Conc: 4.86 ng/ml

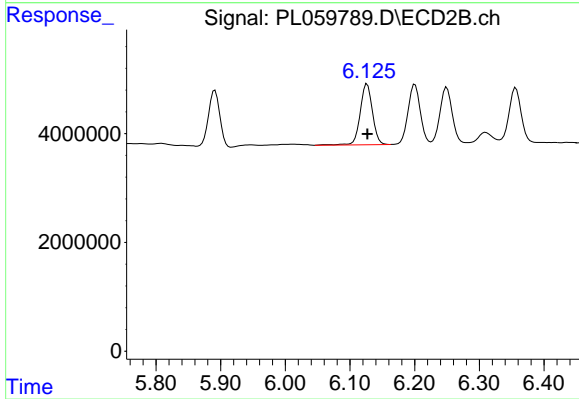
Instrument :  
 ECD\_L  
 ClientSampled :



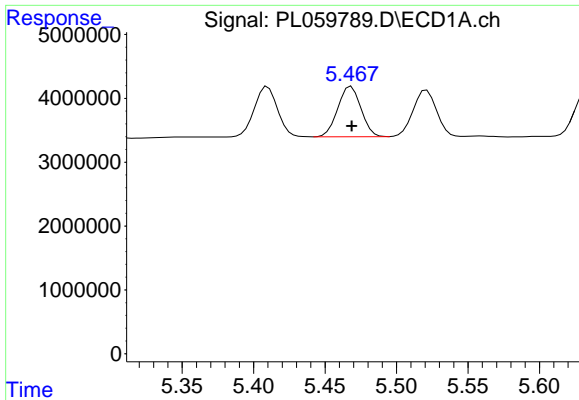
#9 Endosulfan I  
 R.T.: 6.250 min  
 Delta R.T.: 0.000 min  
 Response: 13614607  
 Conc: 5.03 ng/ml



#10 gamma-Chlordane  
 R.T.: 5.410 min  
 Delta R.T.: 0.000 min  
 Response: 8939323  
 Conc: 4.86 ng/ml

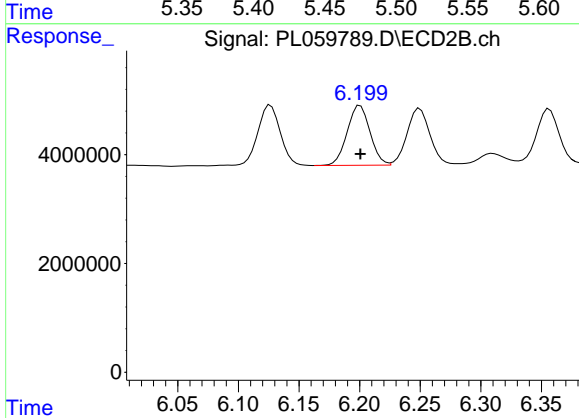


#10 gamma-Chlordane  
 R.T.: 6.127 min  
 Delta R.T.: 0.000 min  
 Response: 14673540  
 Conc: 5.09 ng/ml

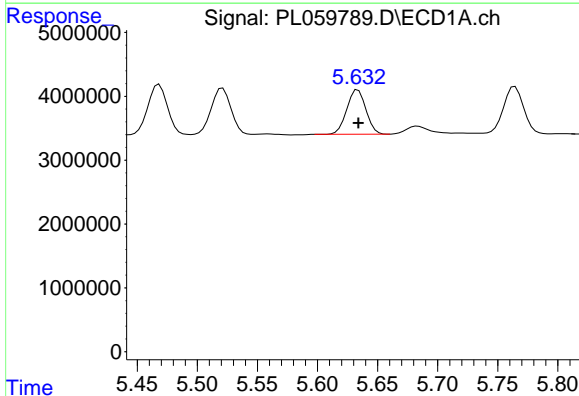


#11 alpha-Chlordane  
 R.T.: 5.468 min  
 Delta R.T.: 0.000 min  
 Response: 8915542  
 Conc: 4.88 ng/ml

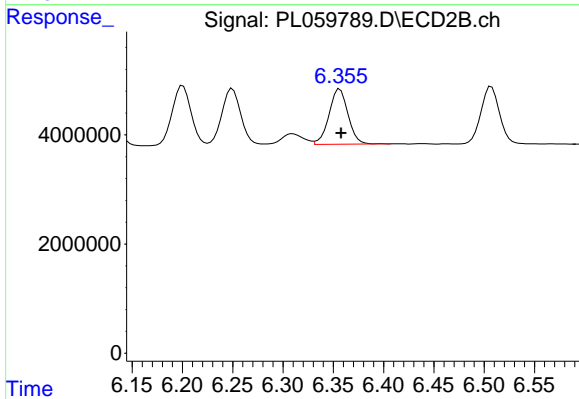
Instrument :  
 ECD\_L  
 ClientSampled :



#11 alpha-Chlordane  
 R.T.: 6.200 min  
 Delta R.T.: 0.000 min  
 Response: 14379544  
 Conc: 4.96 ng/ml

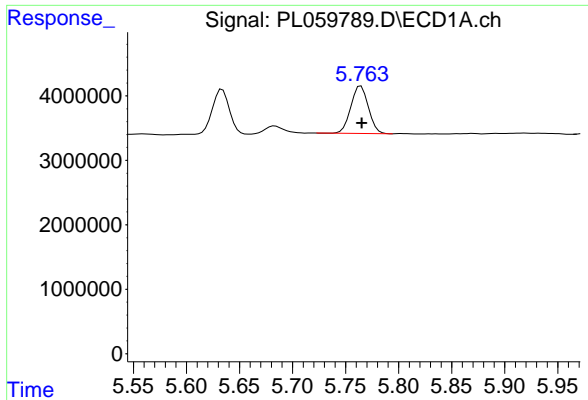


#12 4,4'-DDE  
 R.T.: 5.634 min  
 Delta R.T.: 0.000 min  
 Response: 7712312  
 Conc: 4.48 ng/ml



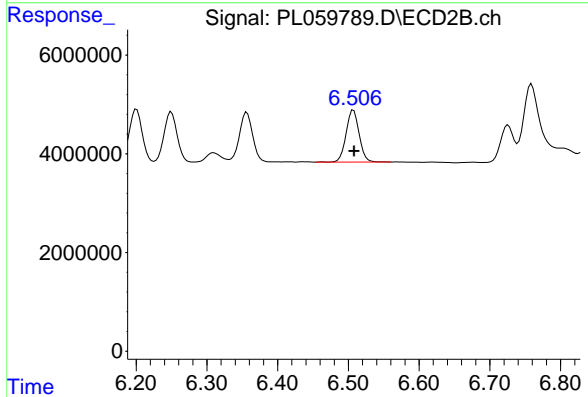
#12 4,4'-DDE  
 R.T.: 6.357 min  
 Delta R.T.: -0.001 min  
 Response: 13271043  
 Conc: 4.87 ng/ml



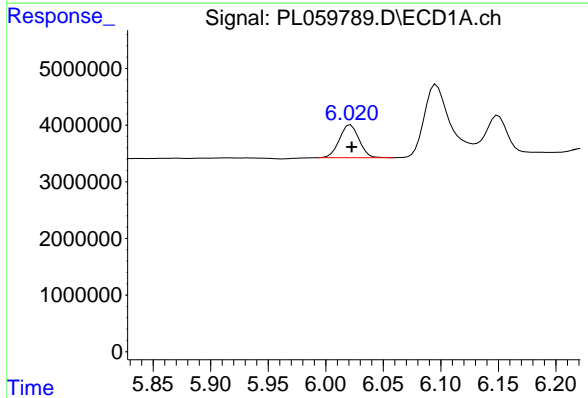


#13 Dieldrin  
 R.T.: 5.764 min  
 Delta R.T.: 0.000 min  
 Response: 8473454  
 Conc: 4.72 ng/ml

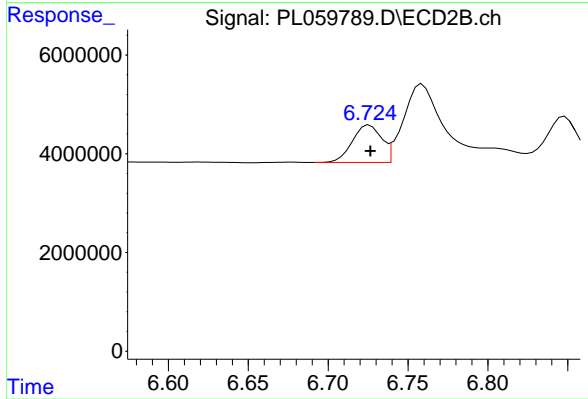
Instrument :  
 ECD\_L  
 ClientSampled :



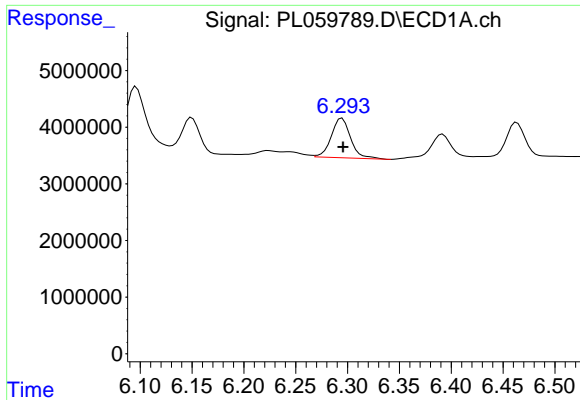
#13 Dieldrin  
 R.T.: 6.507 min  
 Delta R.T.: -0.001 min  
 Response: 13583856  
 Conc: 4.80 ng/ml



#14 Endrin  
 R.T.: 6.022 min  
 Delta R.T.: 0.000 min  
 Response: 6925768  
 Conc: 4.86 ng/ml

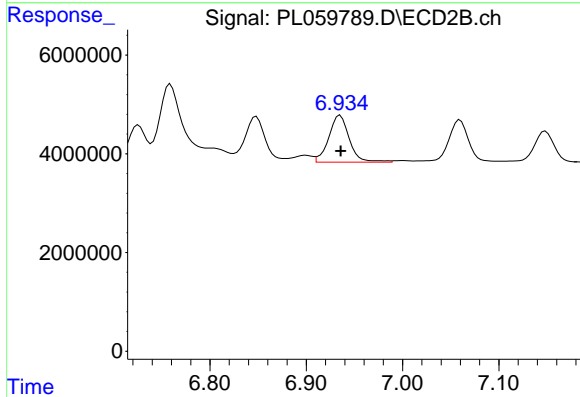


#14 Endrin  
 R.T.: 6.726 min  
 Delta R.T.: 0.000 min  
 Response: 9614000  
 Conc: 4.59 ng/ml

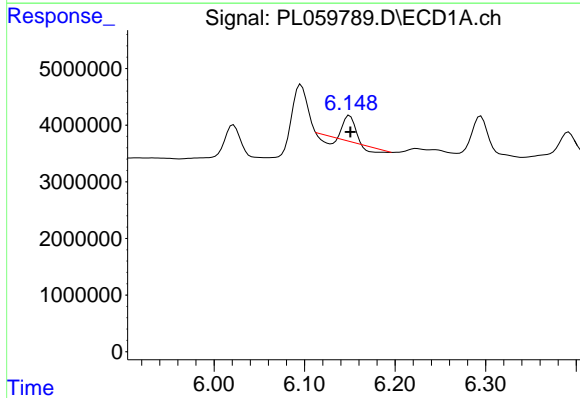


#15 Endosulfan II  
 R.T.: 6.295 min  
 Delta R.T.: 0.000 min  
 Response: 9081299  
 Conc: 5.45 ng/ml

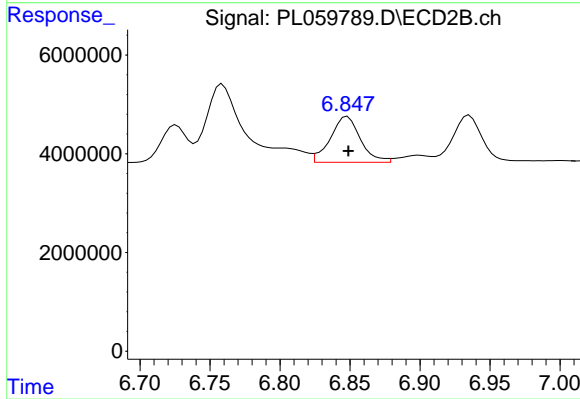
Instrument :  
 ECD\_L  
 ClientSampled :



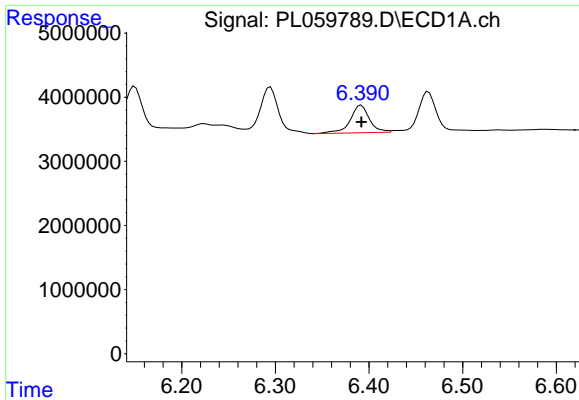
#15 Endosulfan II  
 R.T.: 6.935 min  
 Delta R.T.: 0.000 min  
 Response: 14103565  
 Conc: 5.50 ng/ml



#16 4,4'-DDD  
 R.T.: 6.150 min  
 Delta R.T.: 0.000 min  
 Response: 2177353  
 Conc: 1.43 ng/ml

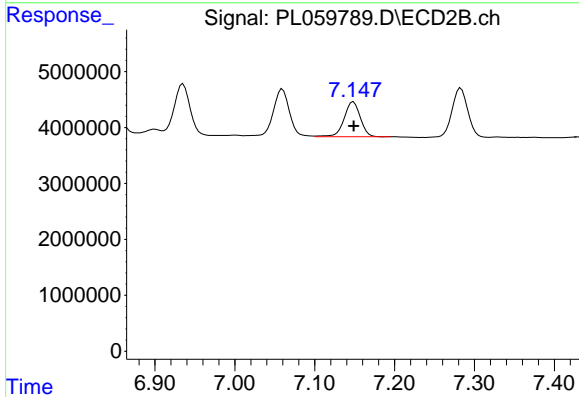


#16 4,4'-DDD  
 R.T.: 6.848 min  
 Delta R.T.: 0.000 min  
 Response: 13843325  
 Conc: 5.82 ng/ml

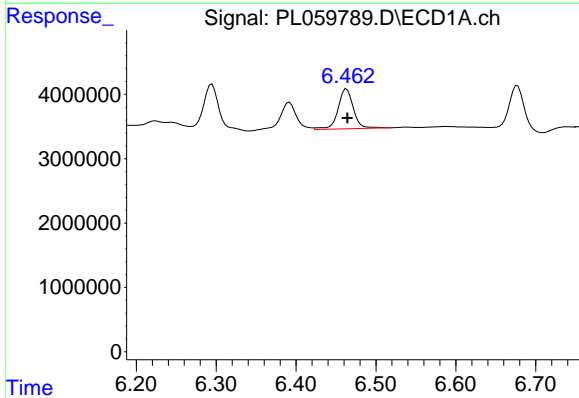


#17 4,4'-DDT  
 R.T.: 6.392 min  
 Delta R.T.: 0.000 min  
 Response: 6158237  
 Conc: 4.74 ng/ml

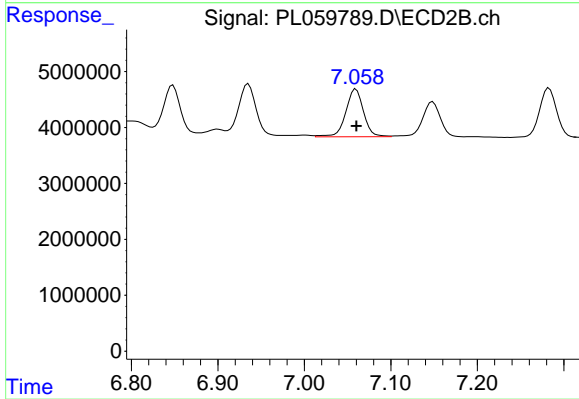
Instrument :  
 ECD\_L  
 ClientSampleId :



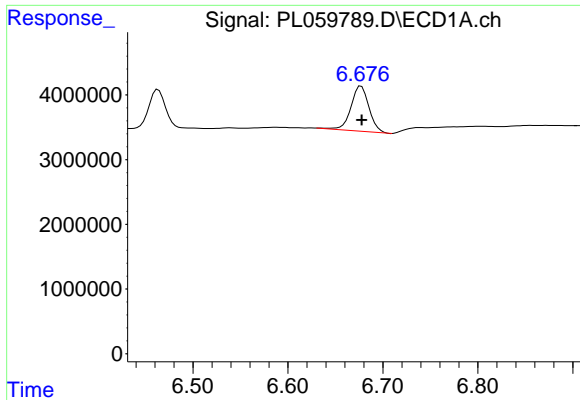
#17 4,4'-DDT  
 R.T.: 7.148 min  
 Delta R.T.: 0.000 min  
 Response: 8872373  
 Conc: 4.44 ng/ml



#18 Endrin aldehyde  
 R.T.: 6.463 min  
 Delta R.T.: 0.000 min  
 Response: 7886600  
 Conc: 5.49 ng/ml



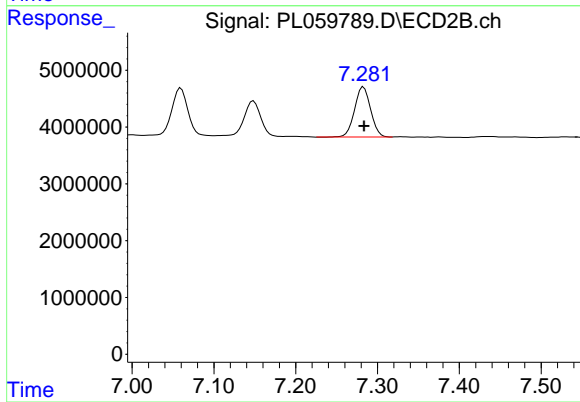
#18 Endrin aldehyde  
 R.T.: 7.060 min  
 Delta R.T.: 0.000 min  
 Response: 12204563  
 Conc: 5.47 ng/ml



#19 Endosulfan Sulfate

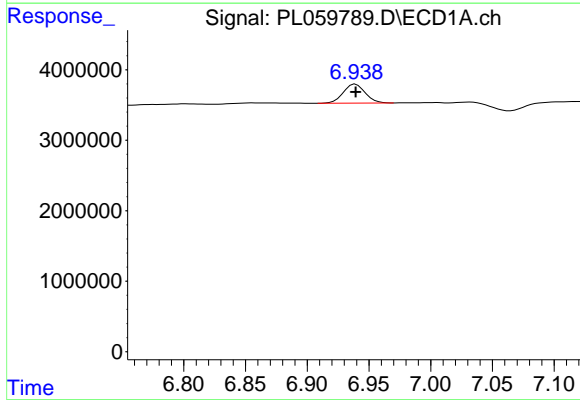
R.T.: 6.677 min  
Delta R.T.: 0.000 min  
Response: 9203111  
Conc: 5.76 ng/ml

Instrument :  
ECD\_L  
ClientSampleId :



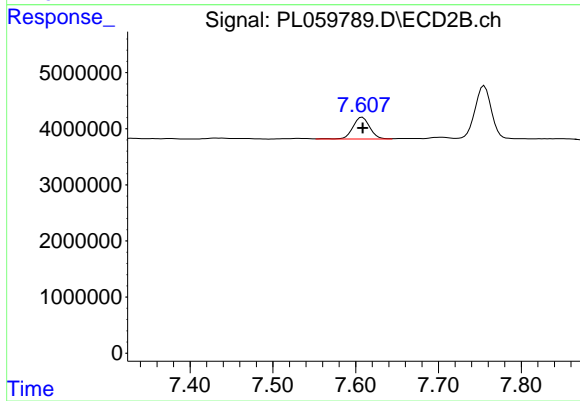
#19 Endosulfan Sulfate

R.T.: 7.283 min  
Delta R.T.: 0.000 min  
Response: 12015399  
Conc: 5.02 ng/ml



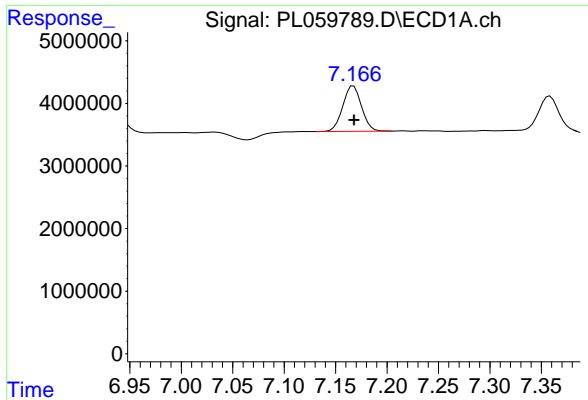
#20 Methoxychlor

R.T.: 6.939 min  
Delta R.T.: 0.000 min  
Response: 3311728  
Conc: 4.40 ng/ml



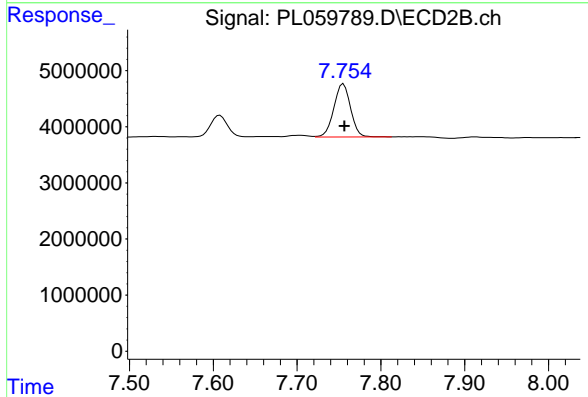
#20 Methoxychlor

R.T.: 7.608 min  
Delta R.T.: 0.000 min  
Response: 5486006  
Conc: 4.82 ng/ml

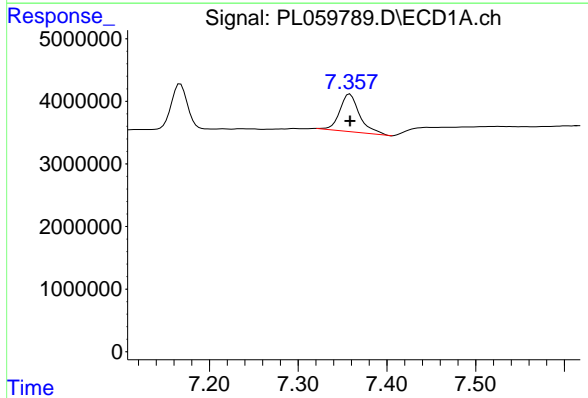


#21 Endrin ketone  
 R.T.: 7.167 min  
 Delta R.T.: 0.000 min  
 Response: 9211486  
 Conc: 4.72 ng/ml

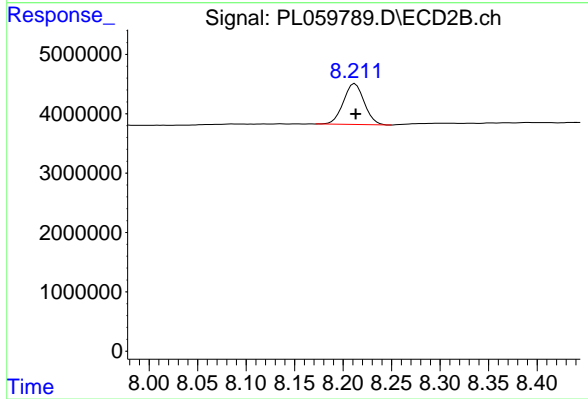
Instrument :  
 ECD\_L  
 ClientSampleId :



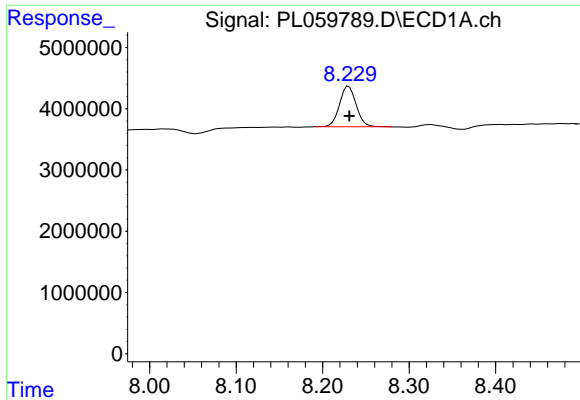
#21 Endrin ketone  
 R.T.: 7.755 min  
 Delta R.T.: -0.001 min  
 Response: 13106417  
 Conc: 4.87 ng/ml



#22 Mirex  
 R.T.: 7.358 min  
 Delta R.T.: 0.000 min  
 Response: 9410837  
 Conc: 6.60 ng/ml



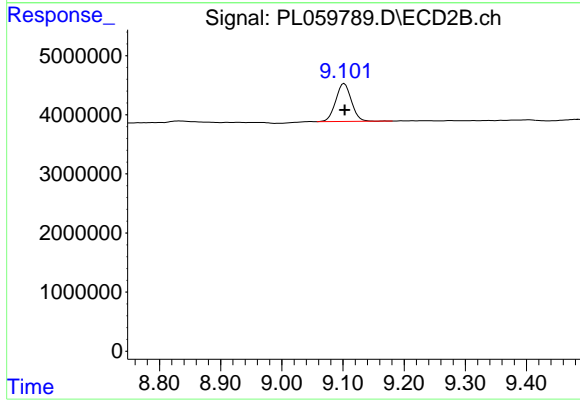
#22 Mirex  
 R.T.: 8.212 min  
 Delta R.T.: 0.000 min  
 Response: 10295657  
 Conc: 5.53 ng/ml



#28 Decachlorobiphenyl

R.T.: 8.230 min  
Delta R.T.: 0.000 min  
Response: 8821869  
Conc: 5.38 ng/ml

Instrument :  
ECD\_L  
ClientSampleId :



#28 Decachlorobiphenyl

R.T.: 9.102 min  
Delta R.T.: 0.000 min  
Response: 11415876  
Conc: 5.45 ng/ml