

Data Path : Z:\pestpcbsrv\HPCHEM1\ECD\_L\Data\PL071020\  
 Data File : PL059792.D  
 Signal(s) : Signal #1: ECD1A.ch Signal #2: ECD2B.ch  
 Acq On : 10 Jul 2020 15:22  
 Operator : DD\AJ  
 Sample : PCHLORICC750  
 Misc :  
 ALS Vial : 11 Sample Multiplier: 1

Instrument :  
 ECD\_L  
 ClientSampleId :

Integration File signal 1: autoint1.e  
 Integration File signal 2: autoint2.e  
 Quant Time: Jul 10 16:11:39 2020  
 Quant Method : Z:\pestpcbsrv\HPCHEM1\ECD\_L\methods\PL071020.M  
 Quant Title : GC Extractables  
 QLast Update : Fri Jul 10 16:10:49 2020  
 Response via : Initial Calibration  
 Integrator: ChemStation

Volume Inj. : 1 µl  
 Signal #1 Phase : ZB-MR2 Signal #2 Phase: ZB-MR1  
 Signal #1 Info : 30M x 0.32mm x0.2 Signal #2 Info : 30M x 0.32mm x0.5µm

	Compound	RT#1	RT#2	Resp#1	Resp#2	ng/ml	ng/ml
-----							
System Monitoring Compounds							
1)	SA Tetrachlo...	3.465	4.013	171.9E6	208.7E6	75.783	74.703
28)	SA Decachlor...	8.231	9.104	122.3E6	153.0E6	73.538	81.784
Target Compounds							
23)	Chlordane-1	4.338	5.010	44460889	73208097	739.938	746.804
24)	Chlordane-2	4.841	5.479	46302722	81781891	720.588	726.735
25)	Chlordane-3	5.411	6.128	129.4E6	291.5E6	758.728	759.793
26)	Chlordane-4	5.469	6.203	105.8E6	347.1E6	748.267	750.909
27)	Chlordane-5	6.306	7.010	43217315	60599457	768.330	753.237
-----							

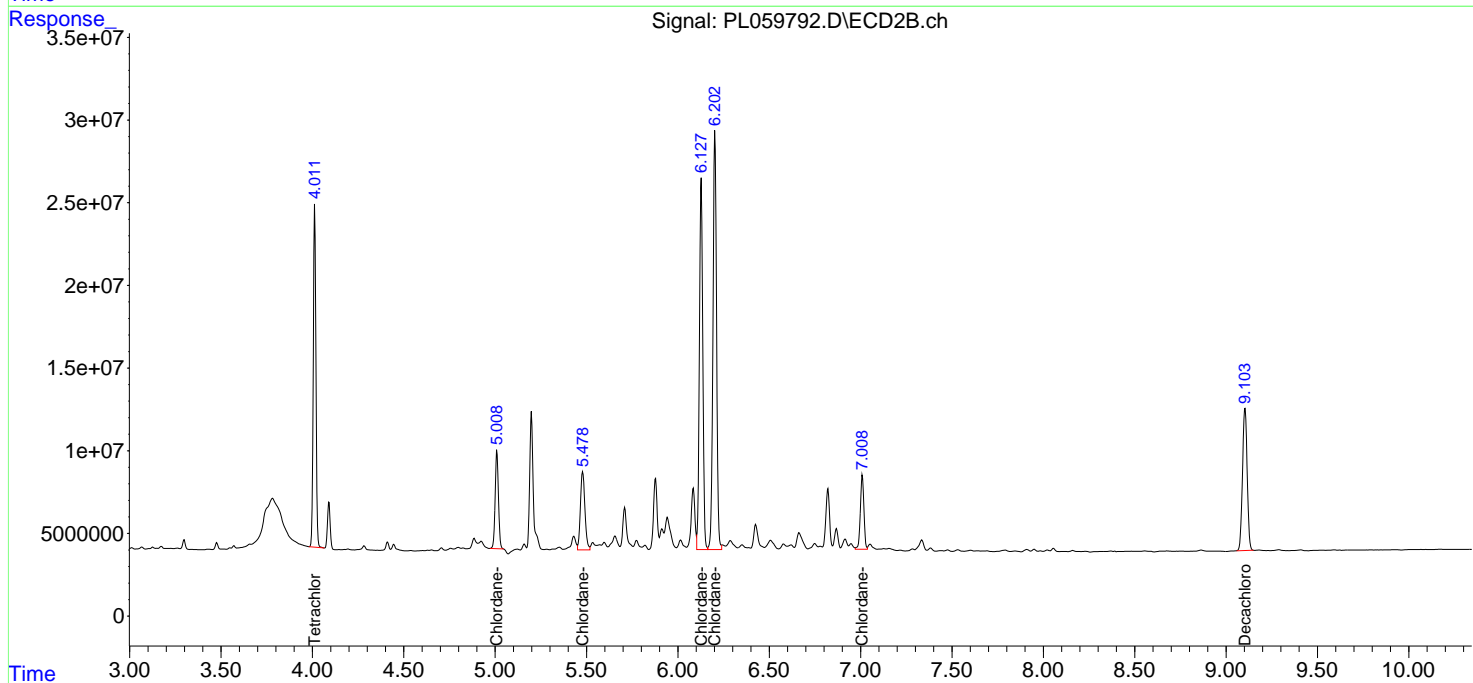
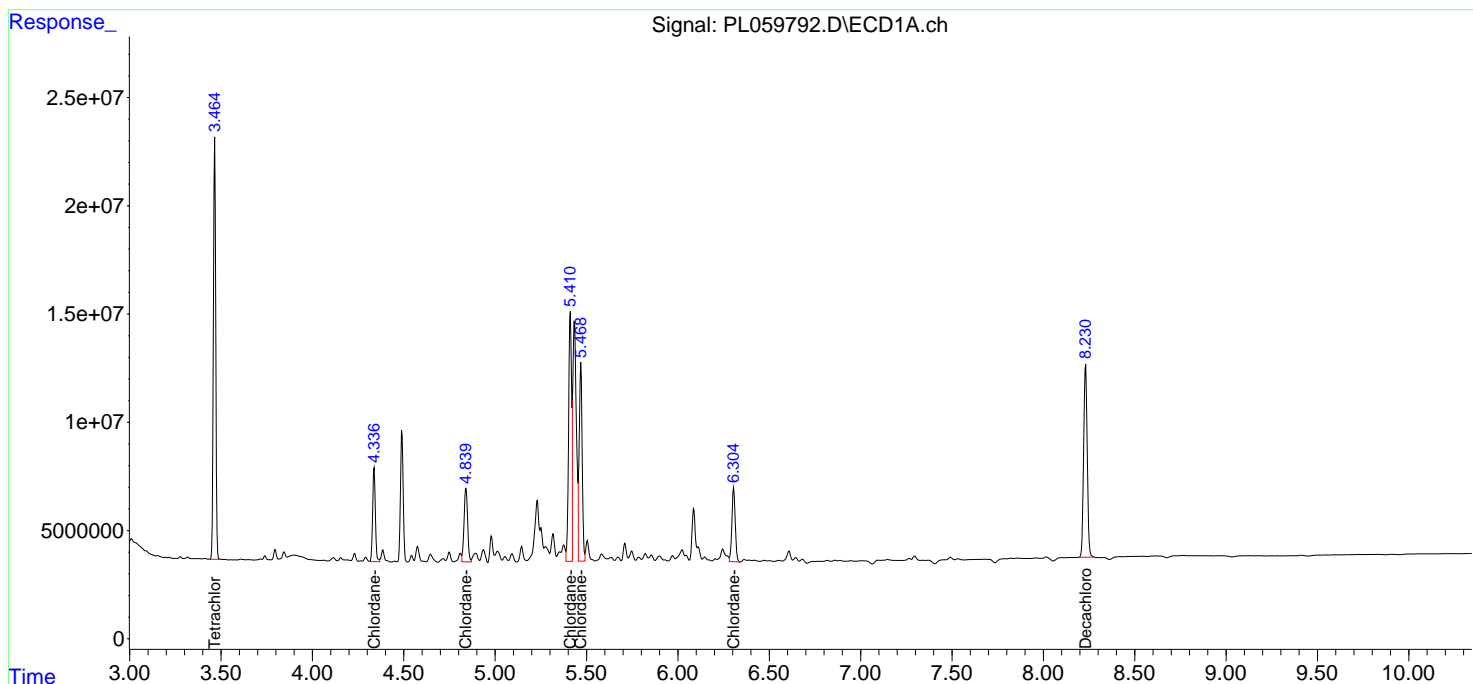
(f)=RT Delta > 1/2 Window (#)=Amounts differ by > 25% (m)=manual int.

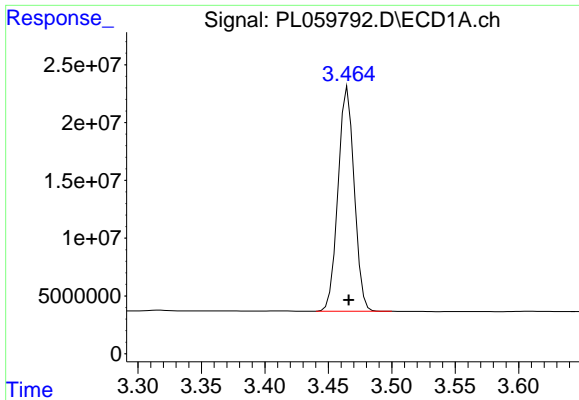
Data Path : Z:\pestpcbsrv\HPCHEM1\ECD\_L\Data\PL071020\  
 Data File : PL059792.D  
 Signal(s) : Signal #1: ECD1A.ch Signal #2: ECD2B.ch  
 Acq On : 10 Jul 2020 15:22  
 Operator : DD\AJ  
 Sample : PCHLORICC750  
 Misc :  
 ALS Vial : 11 Sample Multiplier: 1

Instrument :  
 ECD\_L  
 ClientSampled :

Integration File signal 1: autoint1.e  
 Integration File signal 2: autoint2.e  
 Quant Time: Jul 10 16:11:39 2020  
 Quant Method : Z:\pestpcbsrv\HPCHEM1\ECD\_L\methods\PL071020.M  
 Quant Title : GC Extractables  
 QLast Update : Fri Jul 10 16:10:49 2020  
 Response via : Initial Calibration  
 Integrator: ChemStation

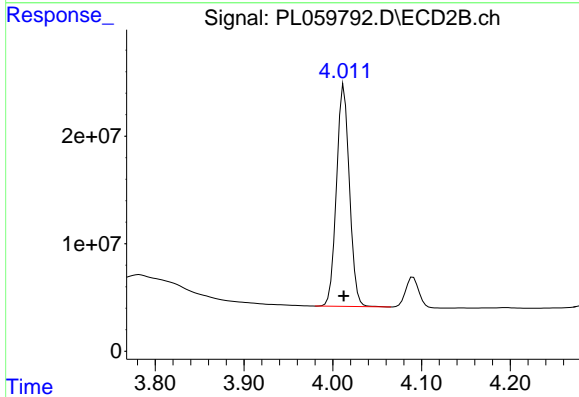
Volume Inj. : 1 µl  
 Signal #1 Phase : ZB-MR2 Signal #2 Phase: ZB-MR1  
 Signal #1 Info : 30M x 0.32mm x0.2 Signal #2 Info : 30M x 0.32mm x0.5µm



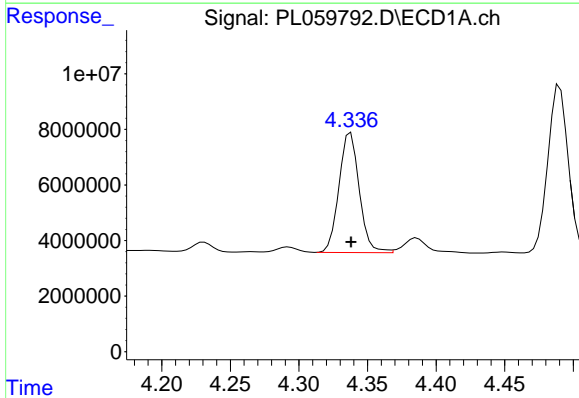


#1 Tetrachloro-m-xylene  
 R.T.: 3.465 min  
 Delta R.T.: 0.000 min  
 Response: 171923877  
 Conc: 75.78 ng/ml

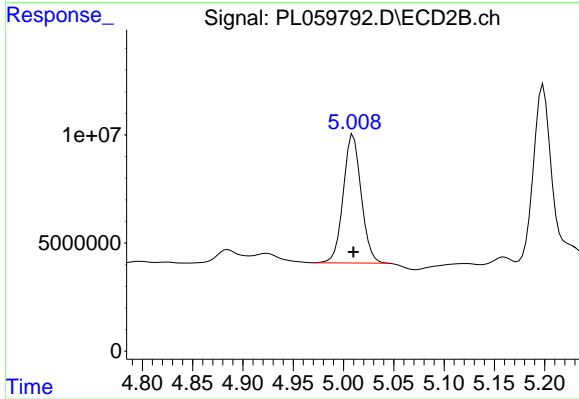
Instrument :  
 ECD\_L  
 ClientSampled :



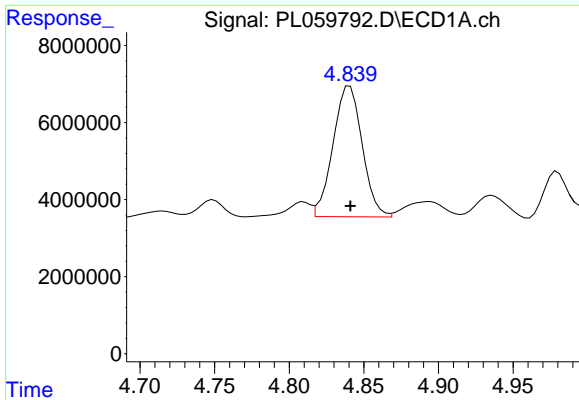
#1 Tetrachloro-m-xylene  
 R.T.: 4.013 min  
 Delta R.T.: 0.000 min  
 Response: 208696632  
 Conc: 74.70 ng/ml



#23 Chlordane-1  
 R.T.: 4.338 min  
 Delta R.T.: 0.000 min  
 Response: 44460889  
 Conc: 739.94 ng/ml

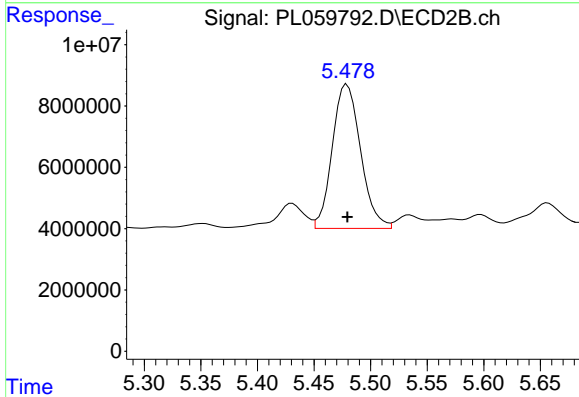


#23 Chlordane-1  
 R.T.: 5.010 min  
 Delta R.T.: 0.000 min  
 Response: 73208097  
 Conc: 746.80 ng/ml

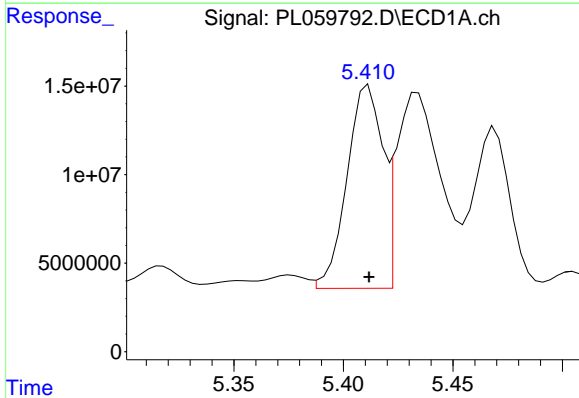


#24 Chlordane-2  
 R.T.: 4.841 min  
 Delta R.T.: 0.000 min  
 Response: 46302722  
 Conc: 720.59 ng/ml

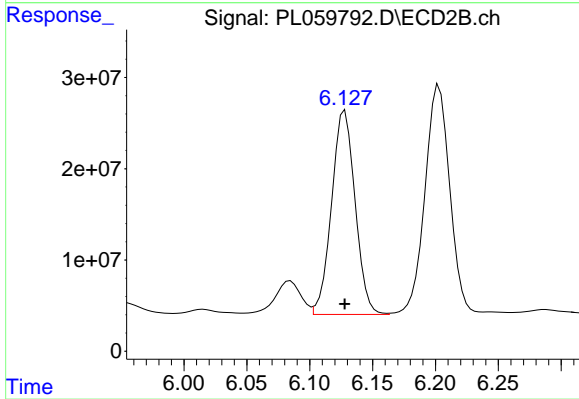
Instrument :  
 ECD\_L  
 ClientSampled :



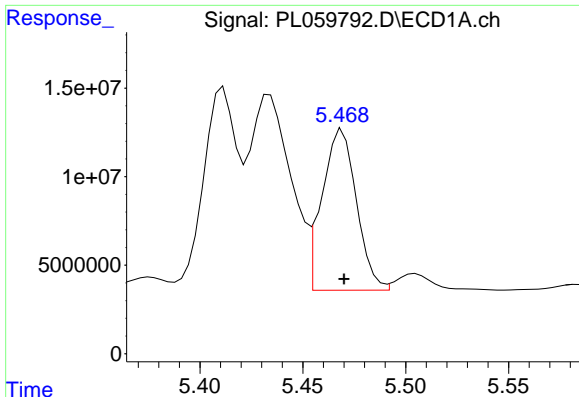
#24 Chlordane-2  
 R.T.: 5.479 min  
 Delta R.T.: 0.000 min  
 Response: 81781891  
 Conc: 726.74 ng/ml



#25 Chlordane-3  
 R.T.: 5.411 min  
 Delta R.T.: 0.000 min  
 Response: 129395746  
 Conc: 758.73 ng/ml



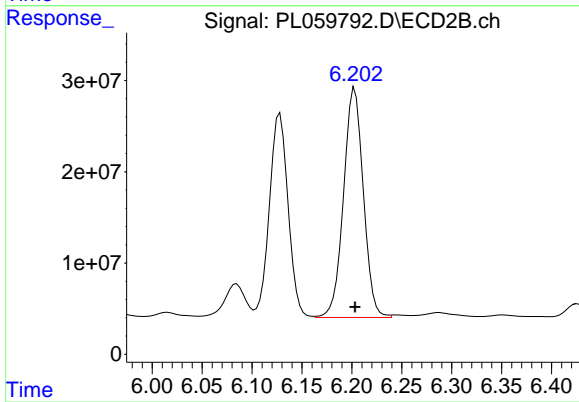
#25 Chlordane-3  
 R.T.: 6.128 min  
 Delta R.T.: 0.000 min  
 Response: 291503211  
 Conc: 759.79 ng/ml



#26 Chlordane-4

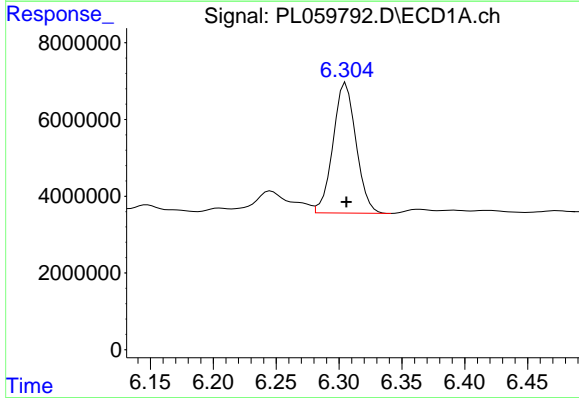
R.T.: 5.469 min  
 Delta R.T.: 0.000 min  
 Response: 105831503  
 Conc: 748.27 ng/ml

Instrument :  
 ECD\_L  
 ClientSampled :



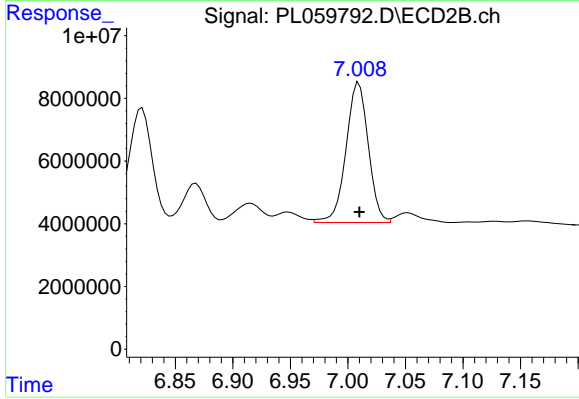
#26 Chlordane-4

R.T.: 6.203 min  
 Delta R.T.: 0.000 min  
 Response: 347054243  
 Conc: 750.91 ng/ml



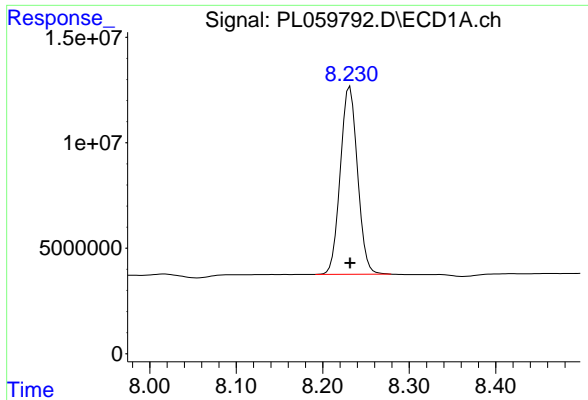
#27 Chlordane-5

R.T.: 6.306 min  
 Delta R.T.: 0.000 min  
 Response: 43217315  
 Conc: 768.33 ng/ml



#27 Chlordane-5

R.T.: 7.010 min  
 Delta R.T.: 0.000 min  
 Response: 60599457  
 Conc: 753.24 ng/ml



#28 Decachlorobiphenyl

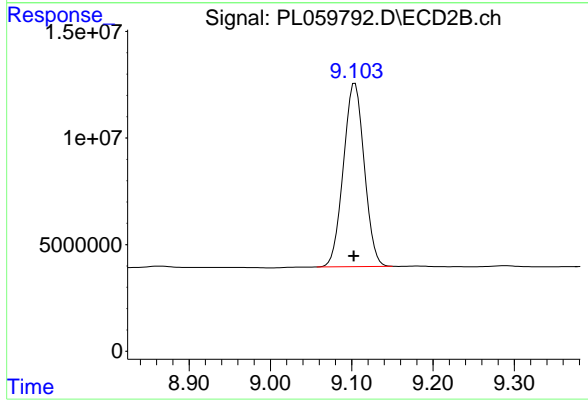
R.T.: 8.231 min

Delta R.T.: 0.000 min

Response: 122340956

Conc: 73.54 ng/ml

Instrument :  
ECD\_L  
ClientSampleId :



#28 Decachlorobiphenyl

R.T.: 9.104 min

Delta R.T.: 0.002 min

Response: 153017005

Conc: 81.78 ng/ml