

Data Path : Z:\pestpcbsrv\HPCHEM1\ECD_L\Data\PL071218\
 Data File : PL037898.D
 Signal(s) : Signal #1: ECD1A.ch Signal #2: ECD2B.ch
 Acq On : 12 Jul 2018 07:23
 Operator : AJ\SJ
 Sample : J3828-06
 Misc :
 ALS Vial : 26 Sample Multiplier: 1

Instrument :
 ECD_L
 ClientSampleId :

Integration File signal 1: autoint1.e
 Integration File signal 2: autoint2.e
 Quant Time: Jul 12 08:39:55 2018
 Quant Method : Z:\PESTPCBSRV\HPCHEM1\ECD_L\methods\PL062018.M
 Quant Title : GC Extractables
 QLast Update : Thu Jun 21 02:27:11 2018
 Response via : Initial Calibration
 Integrator: ChemStation

Volume Inj. : 2 µl
 Signal #1 Phase : ZB-MR1 Signal #2 Phase: ZB-MR2
 Signal #1 Info : 30M x 0.32mm x0.5 Signal #2 Info : 30M x 0.32mm x0.25µm

Compound	RT#1	RT#2	Resp#1	Resp#2	ng/ml	ng/ml

System Monitoring Compounds						
1) SA Tetrachlo...	3.332	3.935	139.0E6	55624542	17.578	20.105
28) SA Decachlor...	8.009	8.945	129.2E6	49008868	21.407	24.703
Target Compounds						
6) B beta-BHC	4.250f	0.000	9947914	0	2.181	N.D. #
21) B Endrin ke...	6.929f	0.000	4531214	0	0.637	N.D. #
23) Chlordane-1	4.250	0.000	9947914	0	32.398	N.D. #

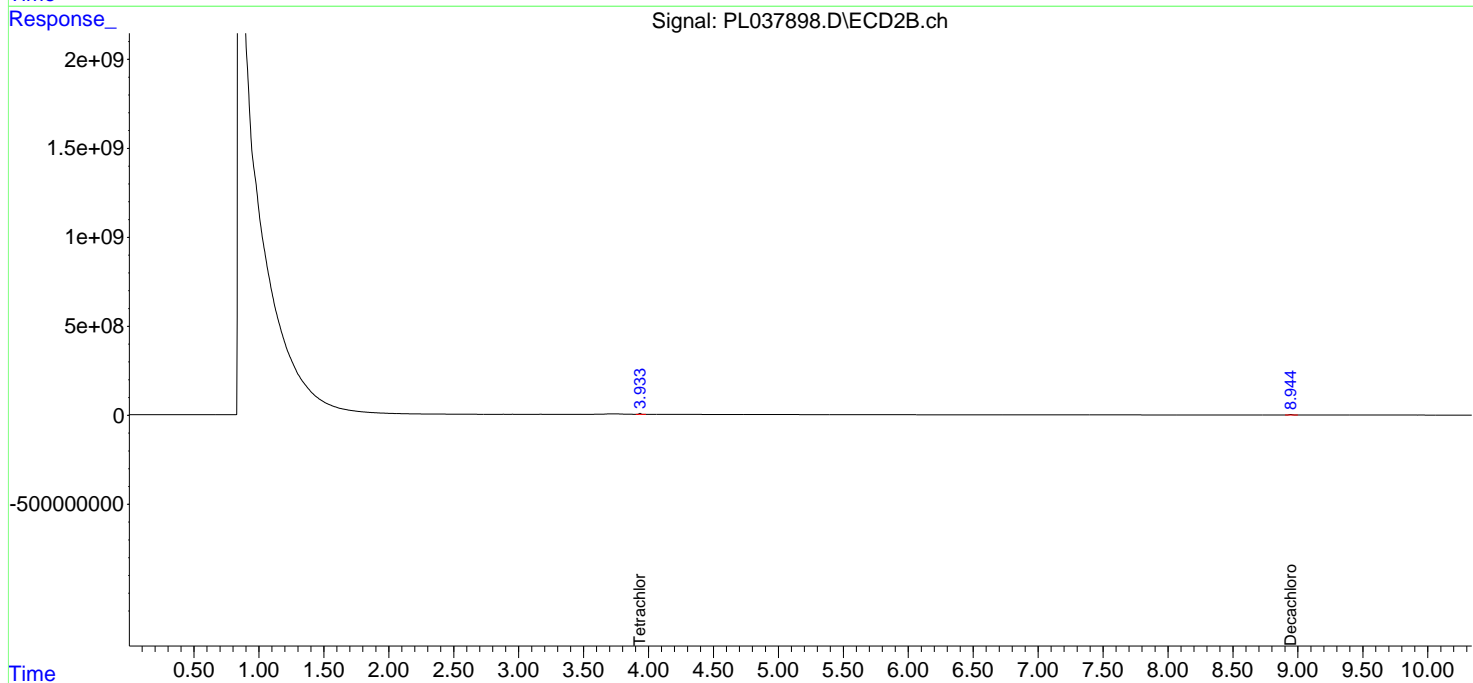
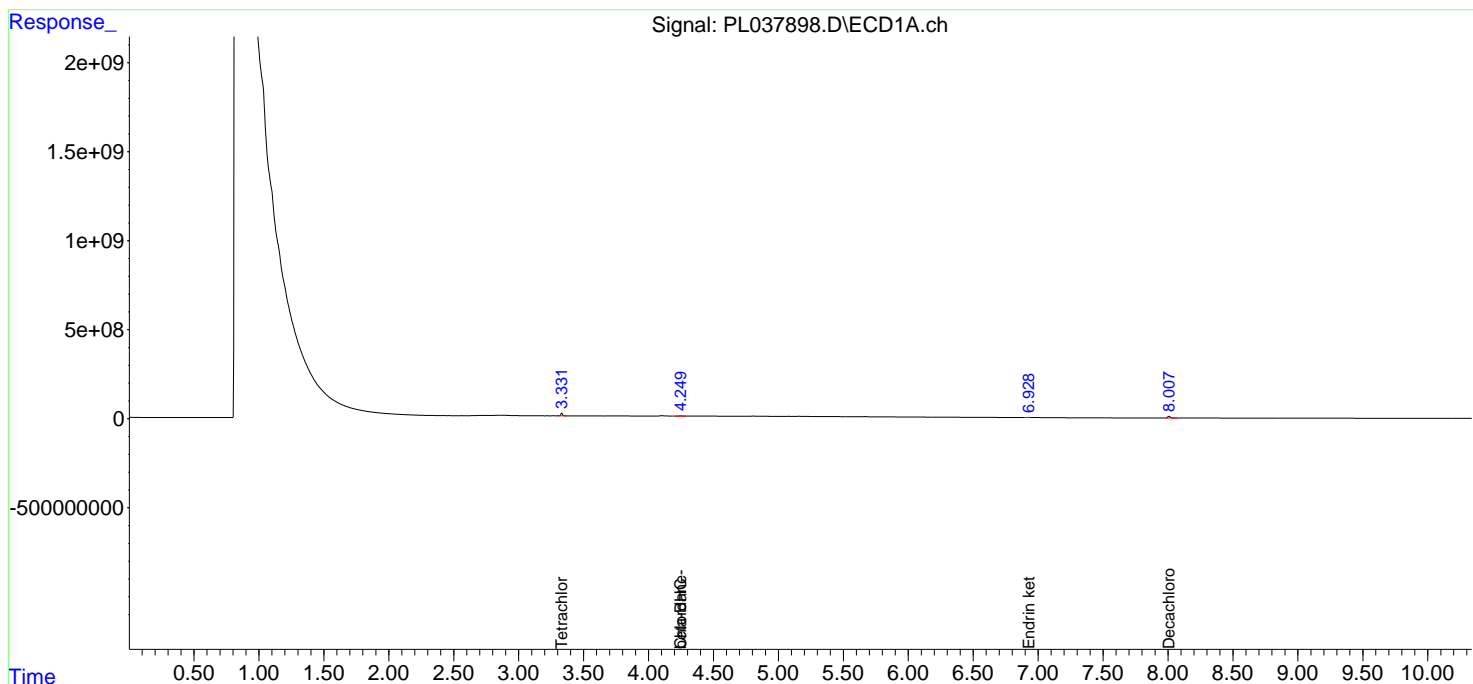
(f)=RT Delta > 1/2 Window (#)=Amounts differ by > 25% (m)=manual int.

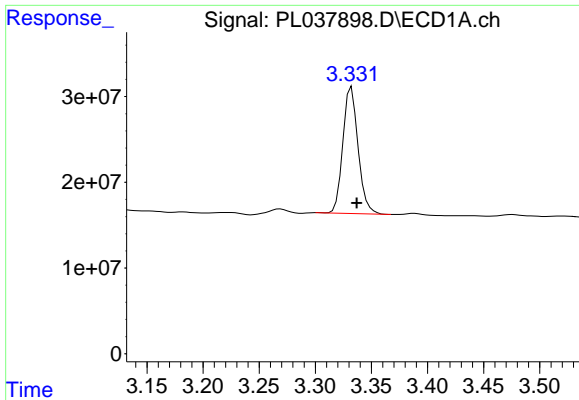
Data Path : Z:\pestpcbsrv\HPCHEM1\ECD_L\Data\PL071218\
 Data File : PL037898.D
 Signal(s) : Signal #1: ECD1A.ch Signal #2: ECD2B.ch
 Acq On : 12 Jul 2018 07:23
 Operator : AJ\SJ
 Sample : J3828-06
 Misc :
 ALS Vial : 26 Sample Multiplier: 1

Instrument :
 ECD_L
 ClientSampleId :

Integration File signal 1: autoint1.e
 Integration File signal 2: autoint2.e
 Quant Time: Jul 12 08:39:55 2018
 Quant Method : Z:\PESTPCBSRV\HPCHEM1\ECD_L\methods\PL062018.M
 Quant Title : GC Extractables
 QLast Update : Thu Jun 21 02:27:11 2018
 Response via : Initial Calibration
 Integrator: ChemStation

Volume Inj. : 2 µl
 Signal #1 Phase : ZB-MR1 Signal #2 Phase: ZB-MR2
 Signal #1 Info : 30M x 0.32mm x0.5 Signal #2 Info : 30M x 0.32mm x0.25µm





#1 Tetrachloro-m-xylene

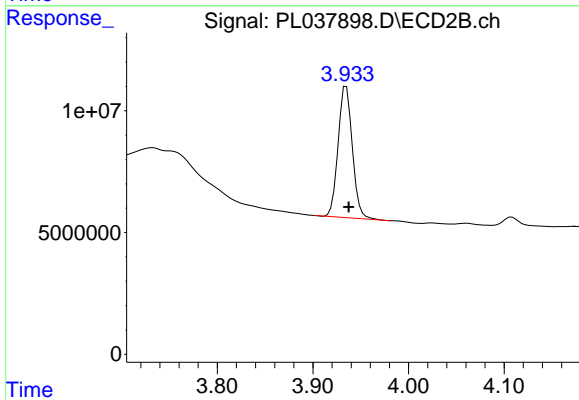
R.T.: 3.332 min

Delta R.T.: -0.005 min

Response: 139048300

Conc: 17.58 ng/ml

Instrument :
ECD_L
ClientSampleId :



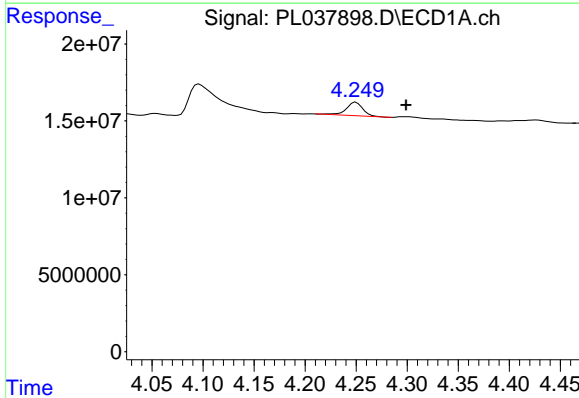
#1 Tetrachloro-m-xylene

R.T.: 3.935 min

Delta R.T.: -0.003 min

Response: 55624542

Conc: 20.10 ng/ml



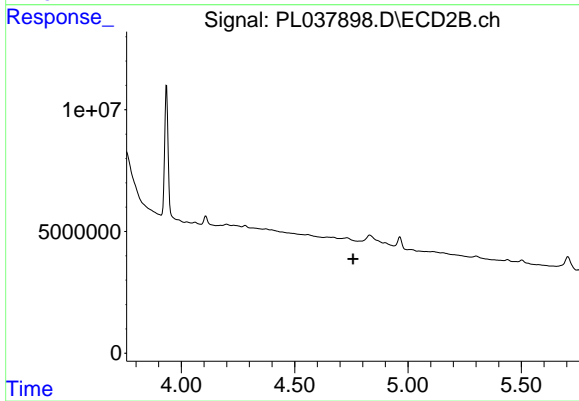
#6 beta-BHC

R.T.: 4.250 min

Delta R.T.: -0.049 min

Response: 9947914

Conc: 2.18 ng/ml



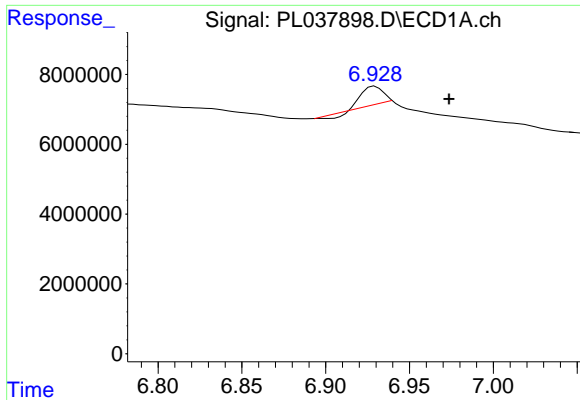
#6 beta-BHC

R.T.: 0.000 min

Exp R.T. : 4.758 min

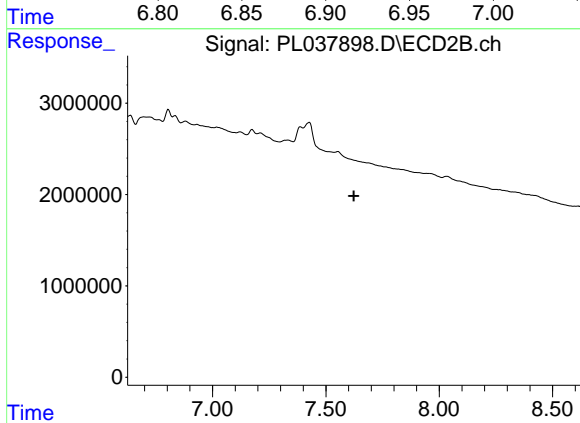
Response: 0

Conc: N.D.

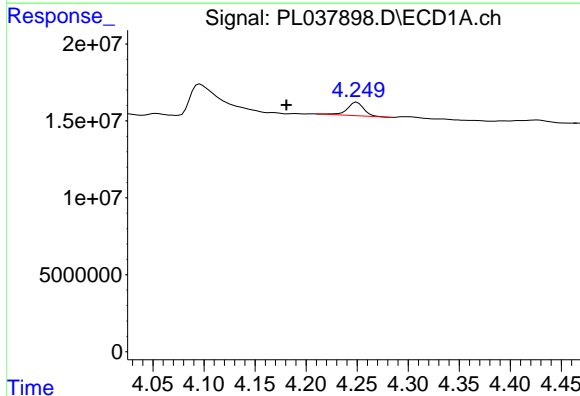


#21 Endrin ketone
 R.T.: 6.929 min
 Delta R.T.: -0.044 min
 Response: 4531214
 Conc: 0.64 ng/ml

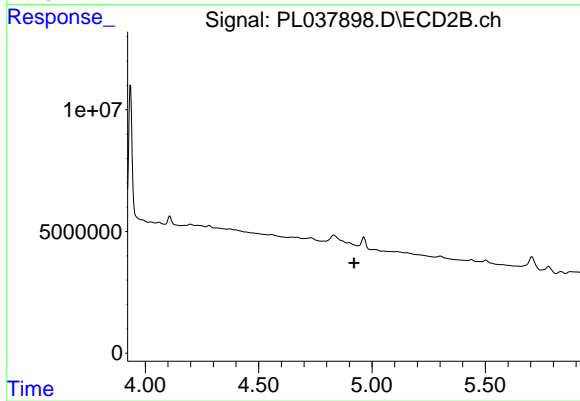
Instrument :
 ECD_L
 ClientSampled :



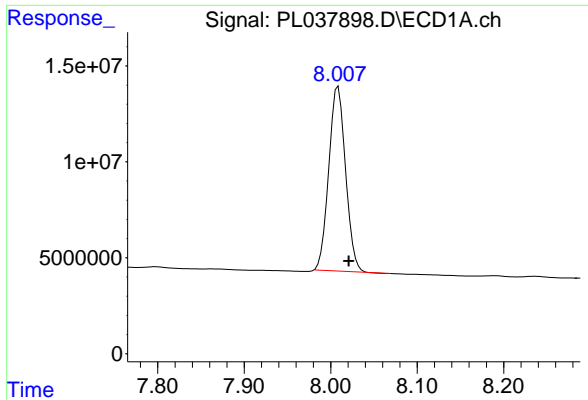
#21 Endrin ketone
 R.T.: 0.000 min
 Exp R.T. : 7.623 min
 Response: 0
 Conc: N.D.



#23 Chlordane-1
 R.T.: 4.250 min
 Delta R.T.: 0.069 min
 Response: 9947914
 Conc: 32.40 ng/ml



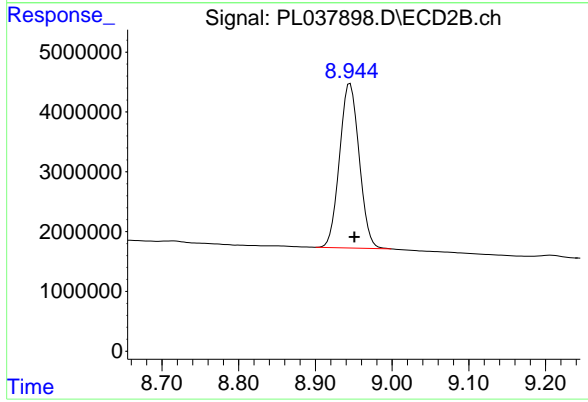
#23 Chlordane-1
 R.T.: 0.000 min
 Exp R.T. : 4.921 min
 Response: 0
 Conc: N.D.



#28 Decachlorobiphenyl

R.T.: 8.009 min
Delta R.T.: -0.012 min
Response: 129171489
Conc: 21.41 ng/ml

Instrument :
ECD_L
ClientSampleId :



#28 Decachlorobiphenyl

R.T.: 8.945 min
Delta R.T.: -0.006 min
Response: 49008868
Conc: 24.70 ng/ml