

Data Path : Z:\pestpcbsrv\HPCHEM1\ECD\_L\Data\PL071218\  
 Data File : PL037944.D  
 Signal(s) : Signal #1: ECD1A.ch Signal #2: ECD2B.ch  
 Acq On : 12 Jul 2018 20:47  
 Operator : AJ\SJ  
 Sample : J3825-08  
 Misc :  
 ALS Vial : 22 Sample Multiplier: 1

**Instrument :**  
 ECD\_L  
**ClientSampleId :**  
 CL-02-071118-D

**Manual Integrations**  
**APPROVED**  
 Sohil  
 7/13/2018 2:34:16 PM

Integration File signal 1: autoint1.e  
 Integration File signal 2: autoint2.e  
 Quant Time: Jul 13 04:23:32 2018  
 Quant Method : Z:\PESTPCBSRV\HPCHEM1\ECD\_L\methods\PL062018.M  
 Quant Title : GC Extractables  
 QLast Update : Thu Jun 21 02:27:11 2018  
 Response via : Initial Calibration  
 Integrator: ChemStation

Volume Inj. : 2 µl  
 Signal #1 Phase : ZB-MR1 Signal #2 Phase: ZB-MR2  
 Signal #1 Info : 30M x 0.32mm x0.5 Signal #2 Info : 30M x 0.32mm x0.25µm

Compound	RT#1	RT#2	Resp#1	Resp#2	ng/ml	ng/ml
-----						
System Monitoring Compounds						
1) SA Tetrachlo...	3.332	3.935	132.3E6	56590503	16.722	20.454
28) SA Decachlor...	8.006	8.946	126.0E6	47493143	20.887m	23.939

Target Compounds  
 -----

(f)=RT Delta > 1/2 Window (#)=Amounts differ by > 25% (m)=manual int.

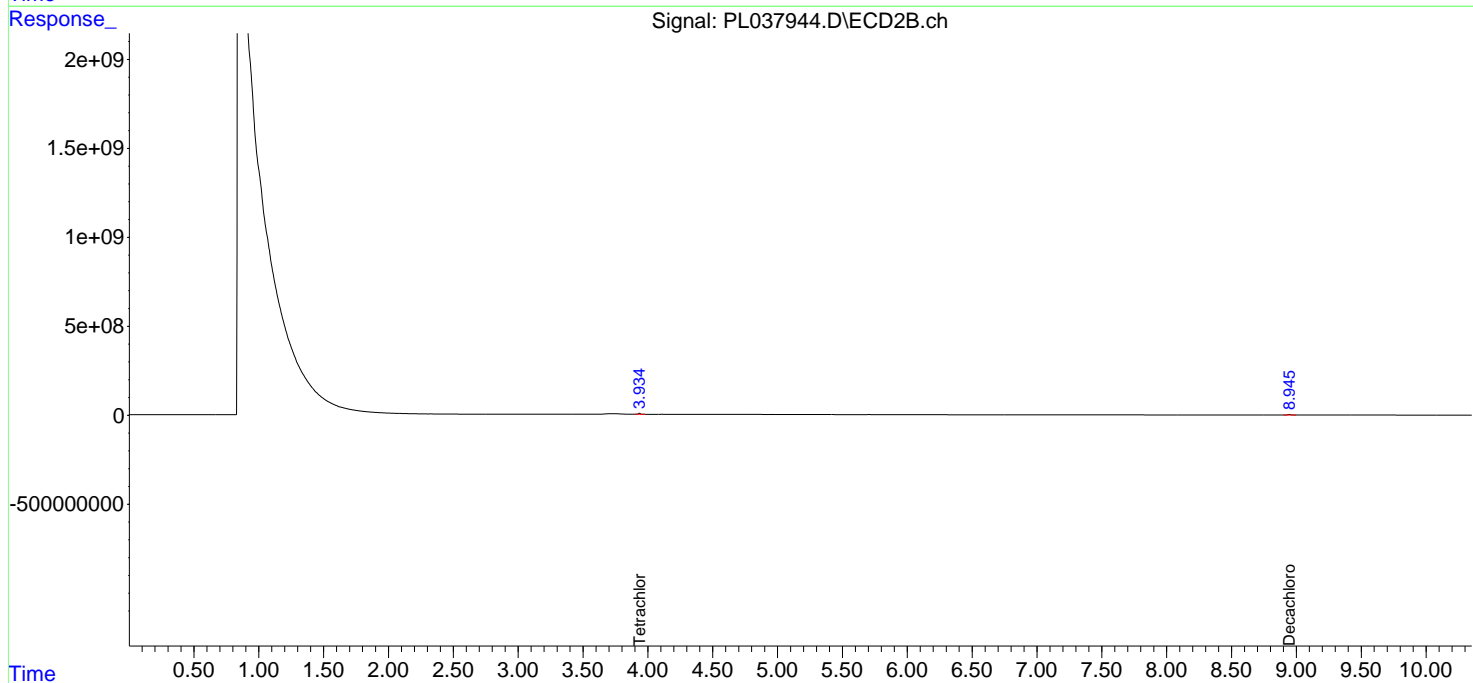
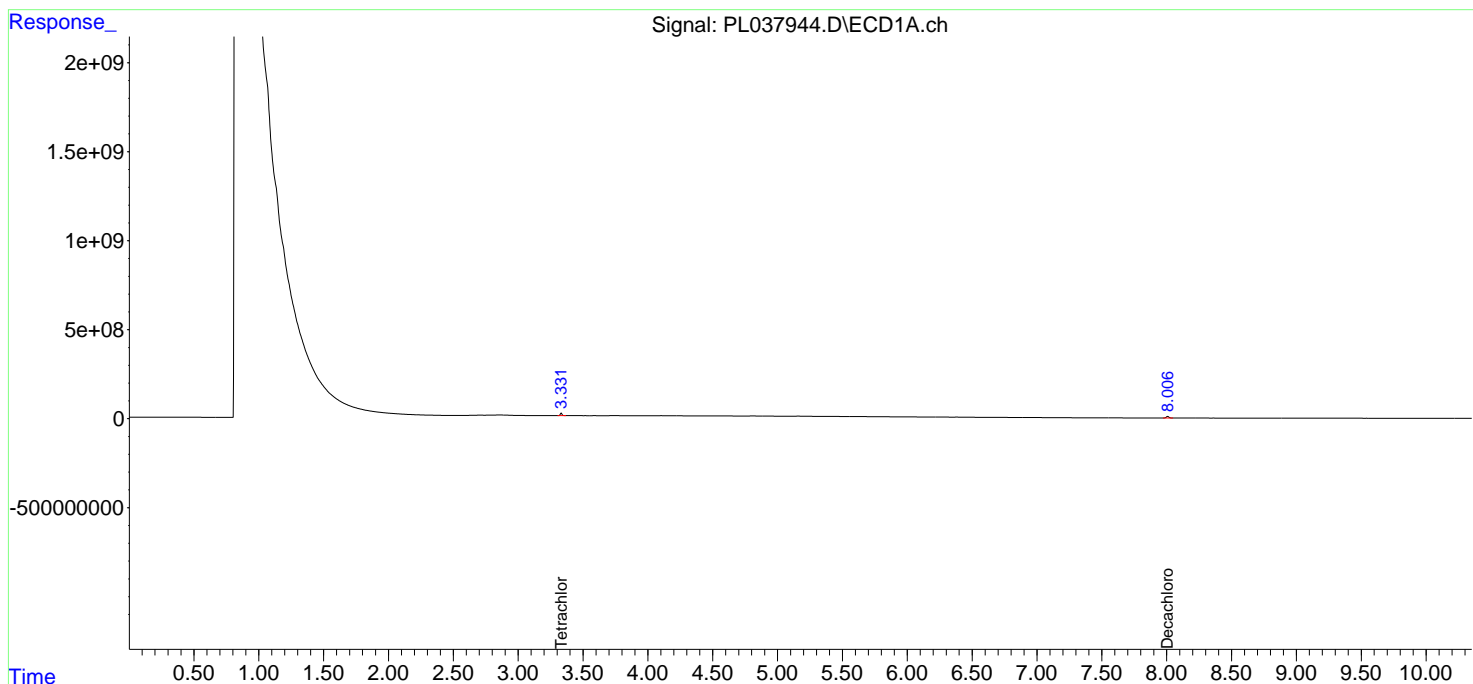
Data Path : Z:\pestpcbsrv\HPCHEM1\ECD\_L\Data\PL071218\  
 Data File : PL037944.D  
 Signal(s) : Signal #1: ECD1A.ch Signal #2: ECD2B.ch  
 Acq On : 12 Jul 2018 20:47  
 Operator : AJ\SJ  
 Sample : J3825-08  
 Misc :  
 ALS Vial : 22 Sample Multiplier: 1

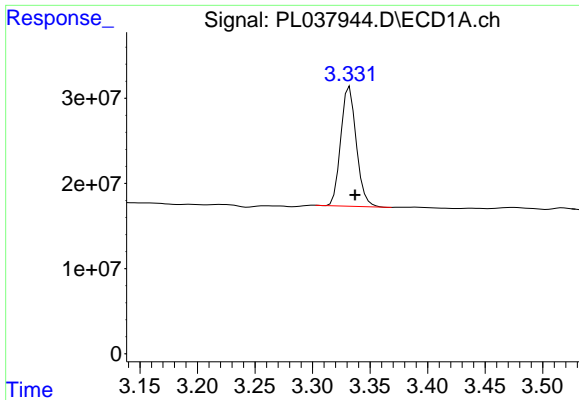
**Instrument :**  
 ECD\_L  
**ClientSampled :**  
 CL-02-071118-D

**Manual Integrations**  
**APPROVED**  
 Sohil  
 7/13/2018 2:34:16 PM

Integration File signal 1: autoint1.e  
 Integration File signal 2: autoint2.e  
 Quant Time: Jul 13 04:23:32 2018  
 Quant Method : Z:\PESTPCBSRV\HPCHEM1\ECD\_L\methods\PL062018.M  
 Quant Title : GC Extractables  
 QLast Update : Thu Jun 21 02:27:11 2018  
 Response via : Initial Calibration  
 Integrator: ChemStation

Volume Inj. : 2 µl  
 Signal #1 Phase : ZB-MR1 Signal #2 Phase: ZB-MR2  
 Signal #1 Info : 30M x 0.32mm x0.5 Signal #2 Info : 30M x 0.32mm x0.25µm

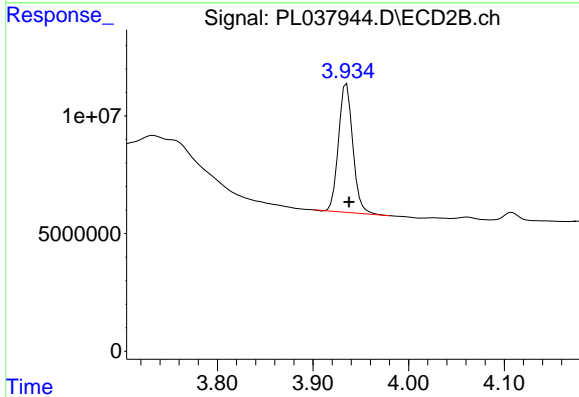




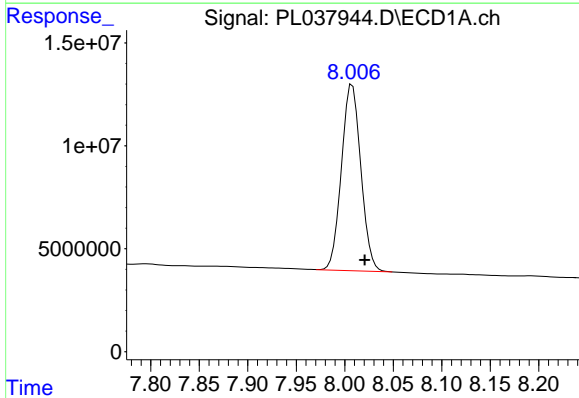
#1 Tetrachloro-m-xylene  
 R.T.: 3.332 min  
 Delta R.T.: -0.005 min  
 Response: 132277439  
 Conc: 16.72 ng/ml

Instrument :  
 ECD\_L  
 ClientSampleId :  
 CL-02-071118-D

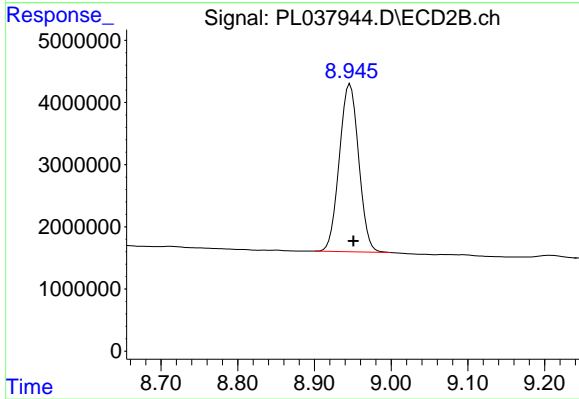
Manual Integrations  
 APPROVED  
 Sohil  
 7/13/2018 2:34:16 PM



#1 Tetrachloro-m-xylene  
 R.T.: 3.935 min  
 Delta R.T.: -0.002 min  
 Response: 56590503  
 Conc: 20.45 ng/ml



#28 Decachlorobiphenyl  
 R.T.: 8.006 min  
 Delta R.T.: -0.014 min  
 Response: 126031436  
 Conc: 20.89 ng/ml m



#28 Decachlorobiphenyl  
 R.T.: 8.946 min  
 Delta R.T.: -0.004 min  
 Response: 47493143  
 Conc: 23.94 ng/ml