

Data Path : Z:\pestpcbsrv\HPCHEM1\ECD_L\Data\PL071219\
 Data File : PL050357.D
 Signal(s) : Signal #1: ECD1A.ch Signal #2: ECD2B.ch
 Acq On : 12 Jul 2019 19:18
 Operator : SM\AJ
 Sample : PSTDCCC050
 Misc :
 ALS Vial : 4 Sample Multiplier: 1

Instrument :
 ECD_L
 ClientSampleId :
 PSTDCCC050

Integration File signal 1: autoint1.e
 Integration File signal 2: autoint2.e
 Quant Time: Jul 12 23:20:25 2019
 Quant Method : Z:\pestpcbsrv\HPCHEM1\ECD_L\methods\PL062019.M
 Quant Title : GC Extractables
 QLast Update : Fri Jun 21 02:23:20 2019
 Response via : Initial Calibration
 Integrator: ChemStation

Volume Inj. : 1 µl
 Signal #1 Phase : ZB-MR2 Signal #2 Phase: ZB-MR1
 Signal #1 Info : 30M x 0.32mm x0.2 Signal #2 Info : 30M x 0.32mm x0.5µm

	Compound	RT#1	RT#2	Resp#1	Resp#2	ng/ml	ng/ml

System Monitoring Compounds							
1)	SA Tetrachlo...	3.319	3.931	567.5E6	165.2E6	50.324	53.951
28)	SA Decachlor...	7.983	8.965	567.6E6	163.0E6	44.674	48.547
Target Compounds							
2)	A alpha-BHC	3.747	4.320	942.5E6	241.5E6	50.169	53.937
3)	MA gamma-BHC...	4.022	4.603	868.8E6	225.2E6	49.002	54.287
4)	MA Heptachlor	4.306	5.105	869.4E6	222.4E6	47.828	51.379
5)	MB Aldrin	4.544	5.407	892.3E6	216.9E6	51.676	55.366
6)	B beta-BHC	4.277	4.779	364.5E6	102.8E6	49.829	53.062
7)	B delta-BHC	4.470	4.993	904.6E6	218.4E6	50.580	55.448
8)	Heptachlo...	4.981	5.794	797.8E6	209.8E6	49.559	57.693
9)	A Endosulfan I	5.312	6.150	764.6E6	189.8E6	49.416	55.868
10)	B gamma-Chl...	5.204	6.028	859.3E6	208.2E6	50.284	55.863
11)	B alpha-Chl...	5.259	6.100	832.4E6	204.3E6	50.147	55.249
12)	B 4,4'-DDE	5.427	6.261	672.5E6	200.3E6	40.367	57.735 #
13)	MA Dieldrin	5.550	6.406	832.3E6	199.8E6	49.965	56.333
14)	MA Endrin	5.803	6.623	791.6E6	168.5E6	49.427	53.377
15)	B Endosulfa...	6.078	6.835	724.9E6	171.8E6	49.747	53.350
16)	A 4,4'-DDD	5.938	6.751	684.1E6	149.9E6	54.192	57.335
17)	MA 4,4'-DDT	6.172	7.048	625.6E6	147.7E6	47.126	50.432
18)	B Endrin al...	6.245	6.959	575.6E6	144.7E6	48.732	52.671
19)	B Endosulfa...	6.456	7.183	565.9E6	147.5E6	43.647	49.012
20)	A Methoxychlor	6.717	7.509	298.6E6	83514157	45.814	50.105
21)	B Endrin ke...	6.938	7.651	627.4E6	157.9E6	44.635	50.670
22)	Mirex	7.112	8.100	484.0E6	133.2E6	46.819	52.670
24)	Chlordane-2	0.000	5.407f	0	216.9E6	N.D.	1396.102 #
25)	Chlordane-3	5.204	6.028	859.3E6	208.2E6	457.505	418.330
26)	Chlordane-4	5.259	6.100	832.4E6	204.3E6	476.972	343.799 #
27)	Chlordane-5	6.078	0.000	724.9E6	0	1291.648	N.D. #

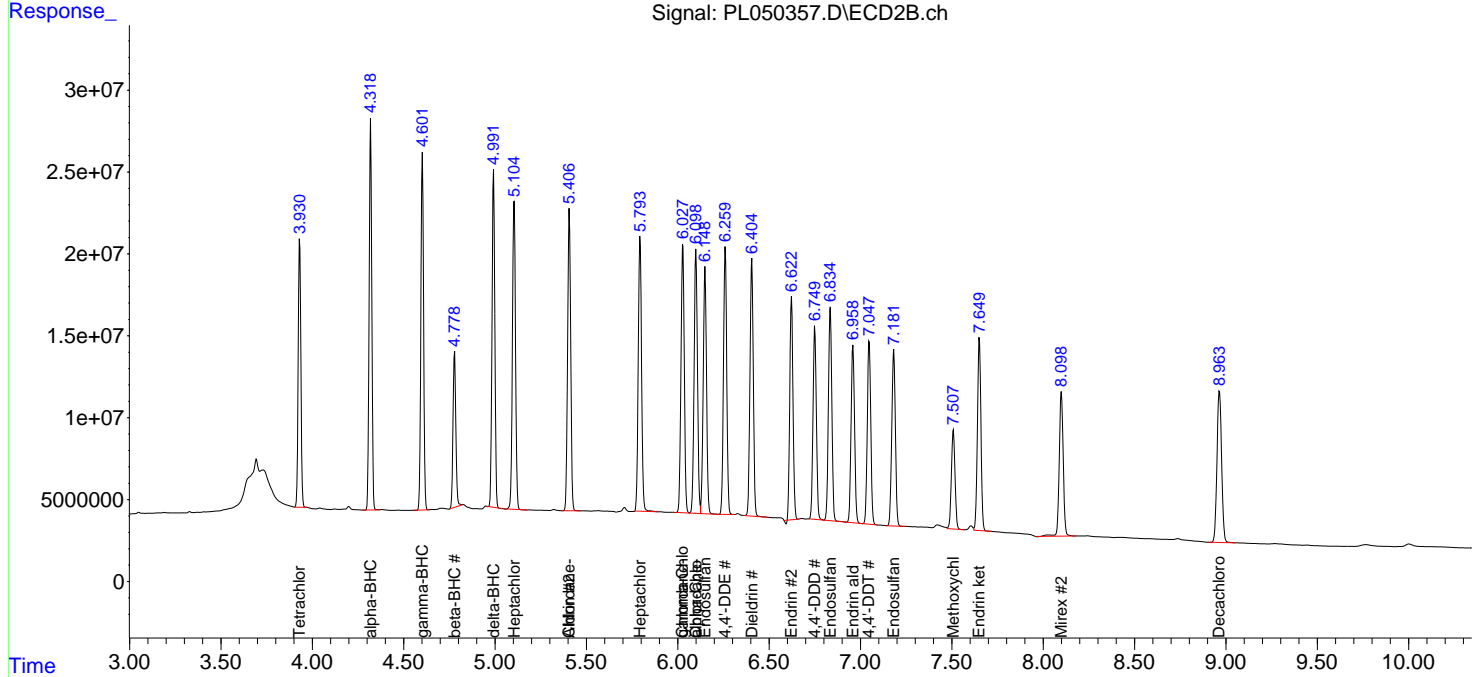
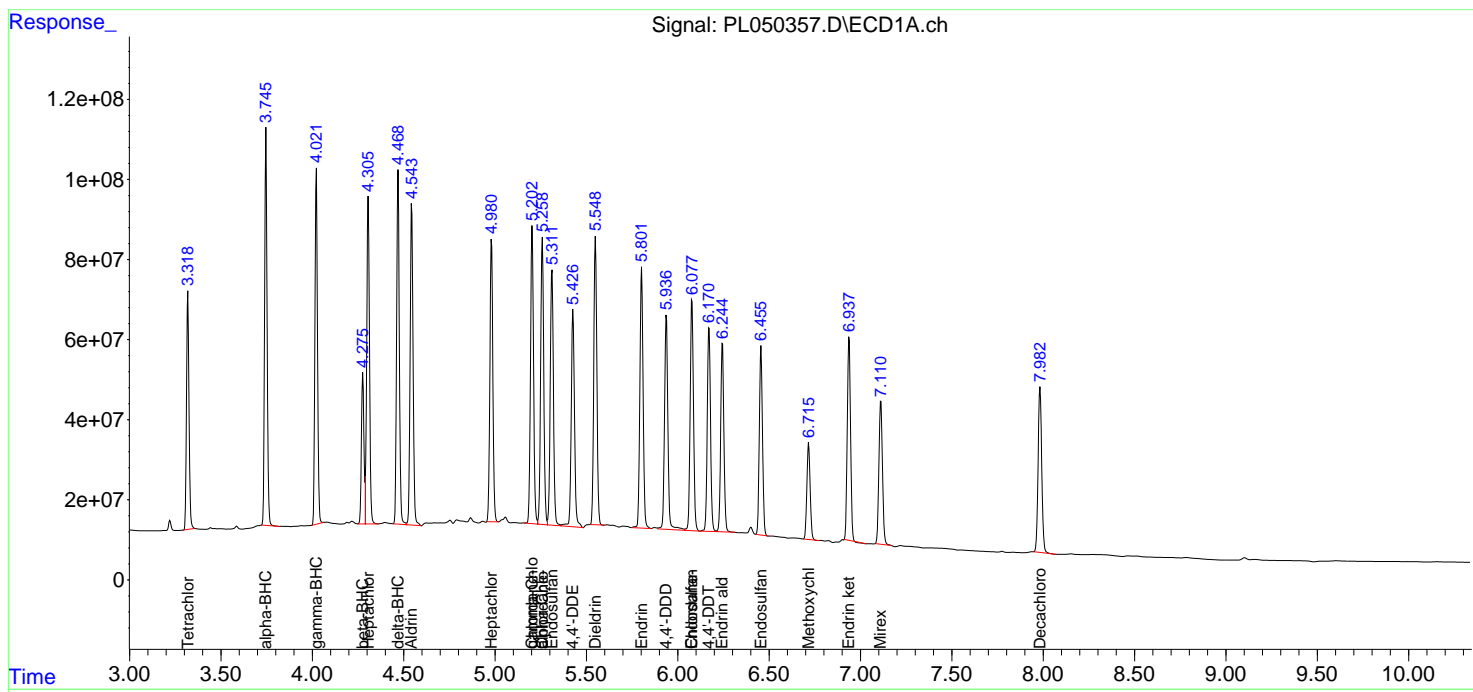
(f)=RT Delta > 1/2 Window (#)=Amounts differ by > 25% (m)=manual int.

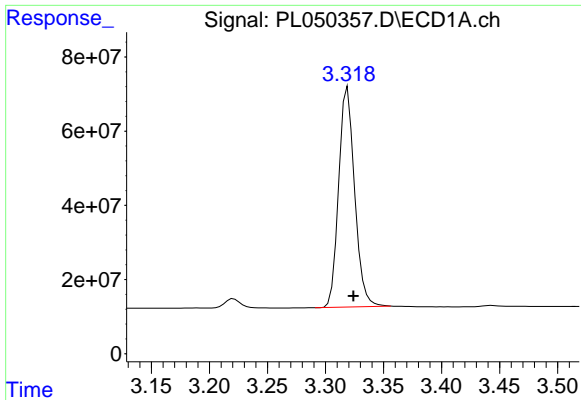
Data Path : Z:\pestpcbsrv\HPCHEM1\ECD_L\Data\PL071219\
 Data File : PL050357.D
 Signal(s) : Signal #1: ECD1A.ch Signal #2: ECD2B.ch
 Acq On : 12 Jul 2019 19:18
 Operator : SM\AJ
 Sample : PSTDCCC050
 Misc :
 ALS Vial : 4 Sample Multiplier: 1

Instrument :
 ECD_L
 ClientSampleId :
 PSTDCCC050

Integration File signal 1: autoint1.e
 Integration File signal 2: autoint2.e
 Quant Time: Jul 12 23:20:25 2019
 Quant Method : Z:\pestpcbsrv\HPCHEM1\ECD_L\methods\PL062019.M
 Quant Title : GC Extractables
 QLast Update : Fri Jun 21 02:23:20 2019
 Response via : Initial Calibration
 Integrator: ChemStation

Volume Inj. : 1 µl
 Signal #1 Phase : ZB-MR2 Signal #2 Phase: ZB-MR1
 Signal #1 Info : 30M x 0.32mm x0.2 Signal #2 Info : 30M x 0.32mm x0.5µm

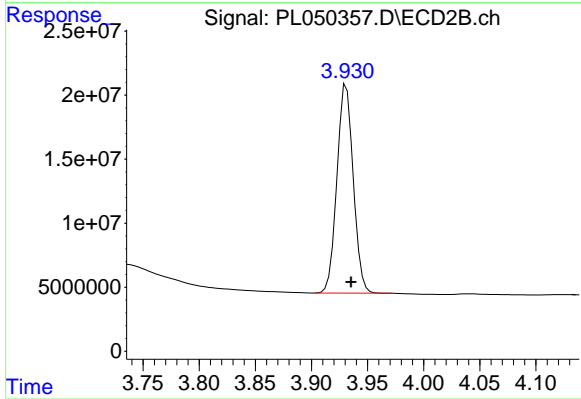




#1 Tetrachloro-m-xylene

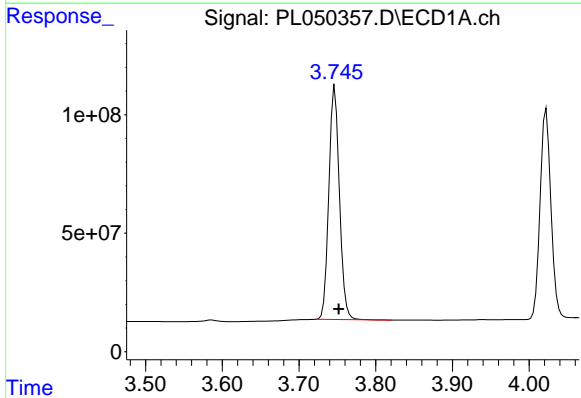
R.T.: 3.319 min
 Delta R.T.: -0.005 min
 Response: 567537382
 Conc: 50.32 ng/ml

Instrument :
 ECD_L
 ClientSampleId :
 PSTDCCC050



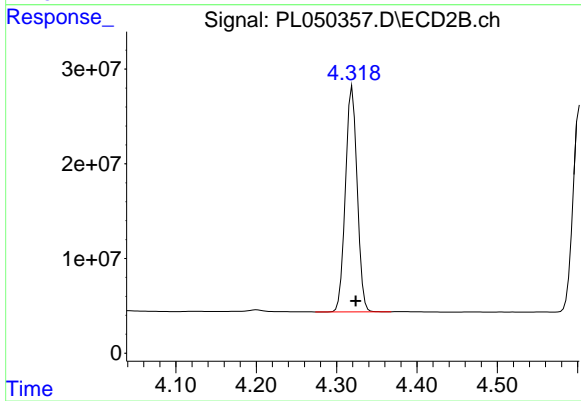
#1 Tetrachloro-m-xylene

R.T.: 3.931 min
 Delta R.T.: -0.004 min
 Response: 165183968
 Conc: 53.95 ng/ml



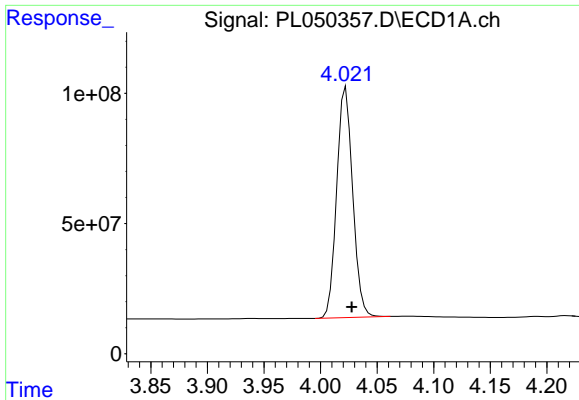
#2 alpha-BHC

R.T.: 3.747 min
 Delta R.T.: -0.005 min
 Response: 942543423
 Conc: 50.17 ng/ml



#2 alpha-BHC

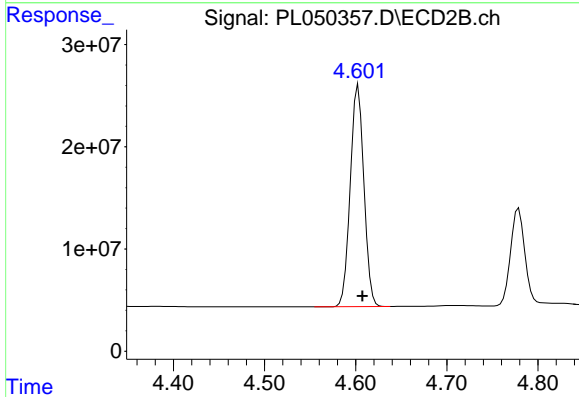
R.T.: 4.320 min
 Delta R.T.: -0.004 min
 Response: 241453758
 Conc: 53.94 ng/ml



#3 gamma-BHC (Lindane)

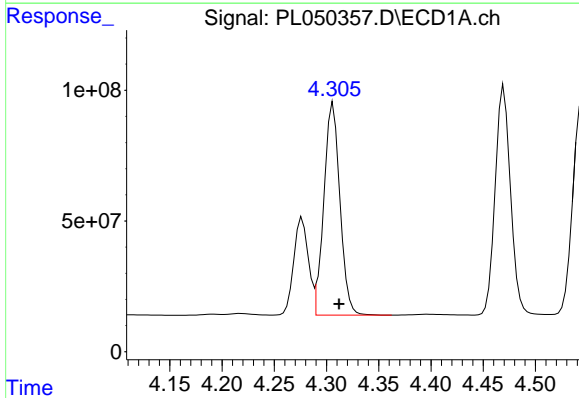
R.T.: 4.022 min
 Delta R.T.: -0.005 min
 Response: 868828939
 Conc: 49.00 ng/ml

Instrument :
 ECD_L
 ClientSampleId :
 PSTDCCC050



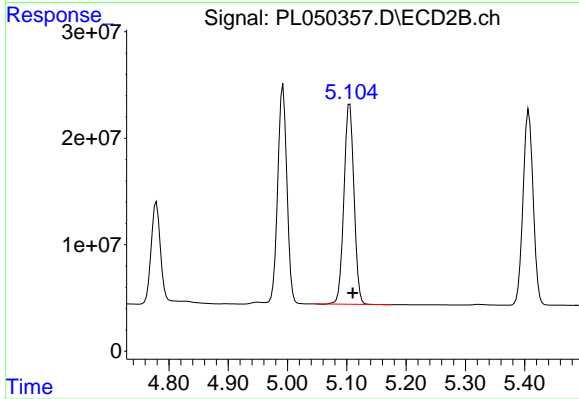
#3 gamma-BHC (Lindane)

R.T.: 4.603 min
 Delta R.T.: -0.005 min
 Response: 225174239
 Conc: 54.29 ng/ml



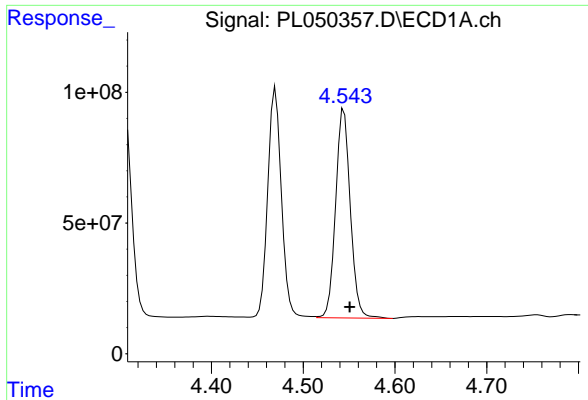
#4 Heptachlor

R.T.: 4.306 min
 Delta R.T.: -0.006 min
 Response: 869379515
 Conc: 47.83 ng/ml



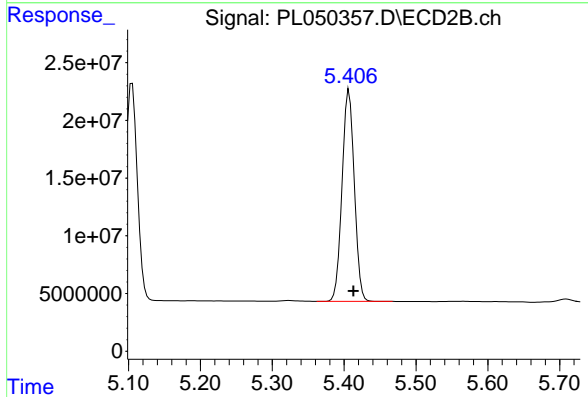
#4 Heptachlor

R.T.: 5.105 min
 Delta R.T.: -0.005 min
 Response: 222390261
 Conc: 51.38 ng/ml

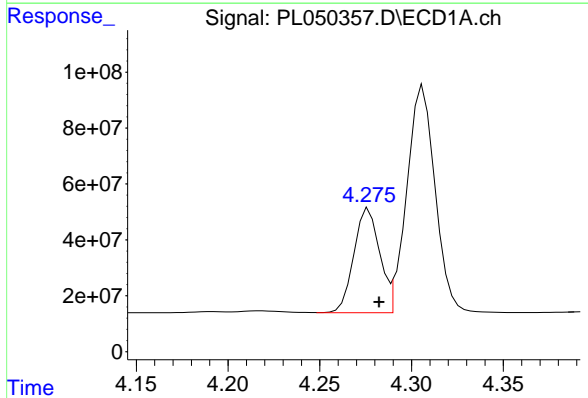


#5 Aldrin
 R.T.: 4.544 min
 Delta R.T.: -0.006 min
 Response: 892341137
 Conc: 51.68 ng/ml

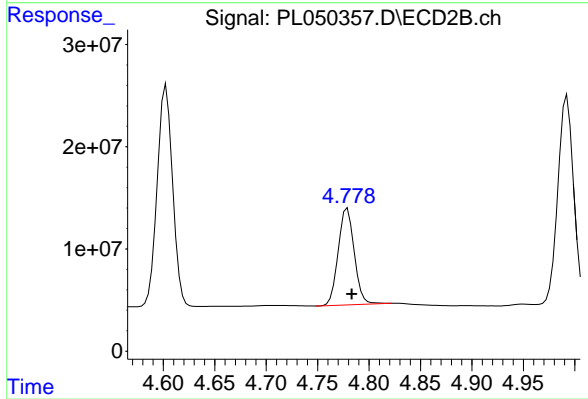
Instrument :
 ECD_L
 ClientSampleId :
 PSTDCCC050



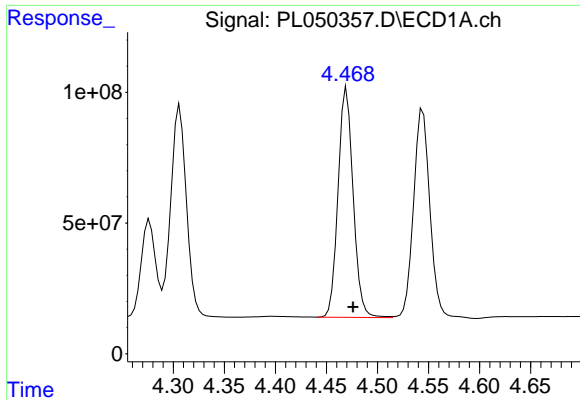
#5 Aldrin
 R.T.: 5.407 min
 Delta R.T.: -0.006 min
 Response: 216870908
 Conc: 55.37 ng/ml



#6 beta-BHC
 R.T.: 4.277 min
 Delta R.T.: -0.006 min
 Response: 364490411
 Conc: 49.83 ng/ml



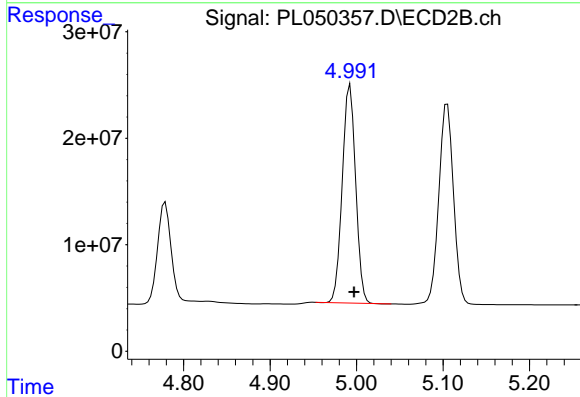
#6 beta-BHC
 R.T.: 4.779 min
 Delta R.T.: -0.004 min
 Response: 102784051
 Conc: 53.06 ng/ml



#7 delta-BHC

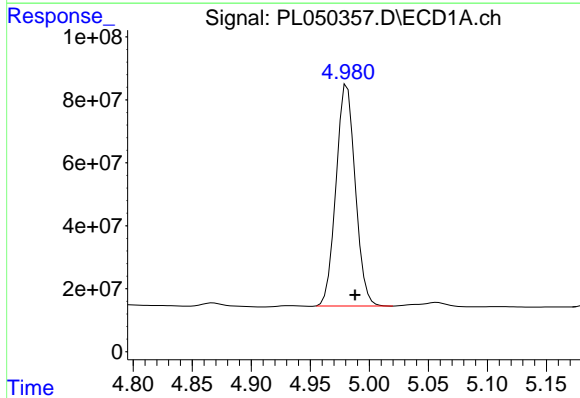
R.T.: 4.470 min
 Delta R.T.: -0.006 min
 Response: 904557274
 Conc: 50.58 ng/ml

Instrument :
 ECD_L
 ClientSampleId :
 PSTDCCC050



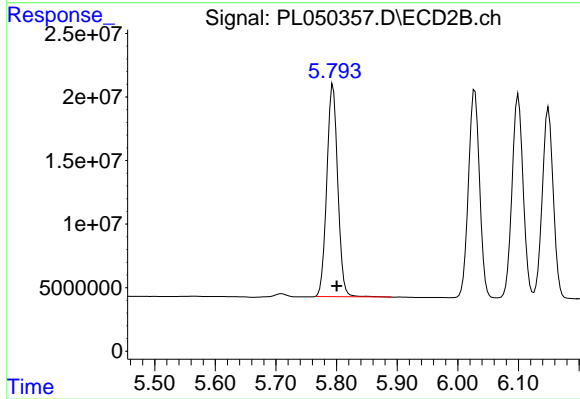
#7 delta-BHC

R.T.: 4.993 min
 Delta R.T.: -0.004 min
 Response: 218402524
 Conc: 55.45 ng/ml



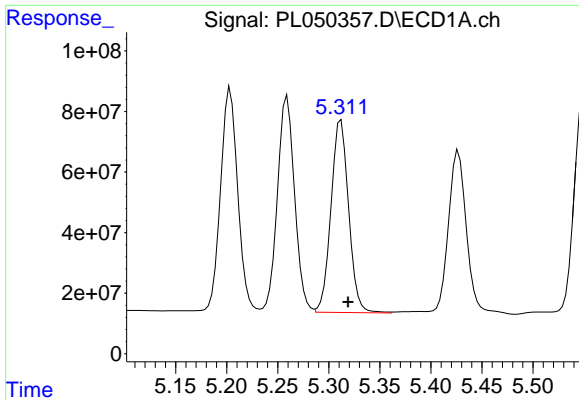
#8 Heptachlor epoxide

R.T.: 4.981 min
 Delta R.T.: -0.007 min
 Response: 797756041
 Conc: 49.56 ng/ml



#8 Heptachlor epoxide

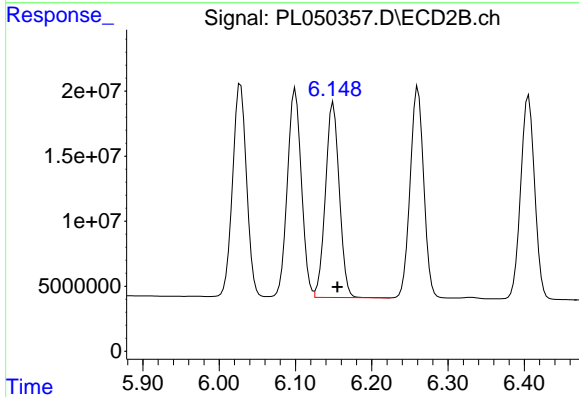
R.T.: 5.794 min
 Delta R.T.: -0.006 min
 Response: 209760453
 Conc: 57.69 ng/ml



#9 Endosulfan I

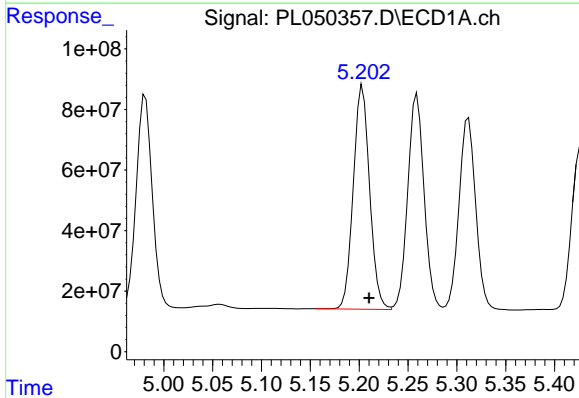
R.T.: 5.312 min
 Delta R.T.: -0.007 min
 Response: 764588866
 Conc: 49.42 ng/ml

Instrument :
 ECD_L
 ClientSampleId :
 PSTDCCC050



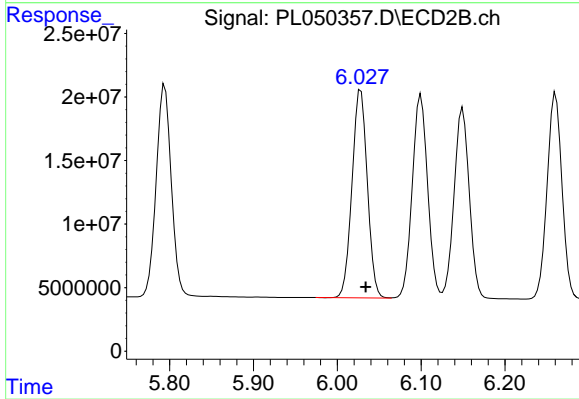
#9 Endosulfan I

R.T.: 6.150 min
 Delta R.T.: -0.006 min
 Response: 189804746
 Conc: 55.87 ng/ml



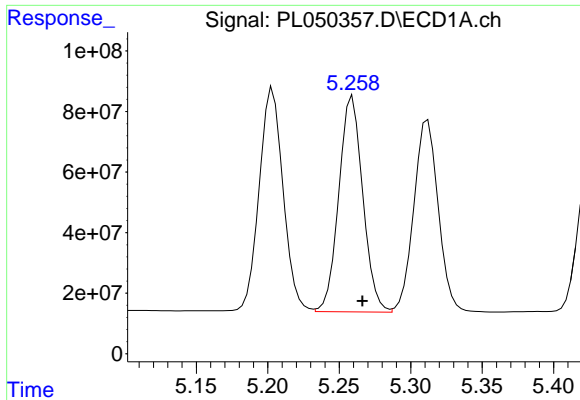
#10 gamma-Chlordane

R.T.: 5.204 min
 Delta R.T.: -0.007 min
 Response: 859293111
 Conc: 50.28 ng/ml



#10 gamma-Chlordane

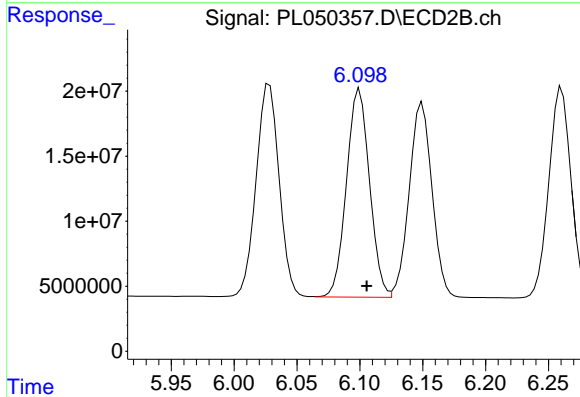
R.T.: 6.028 min
 Delta R.T.: -0.006 min
 Response: 208171292
 Conc: 55.86 ng/ml



#11 alpha-Chlordane

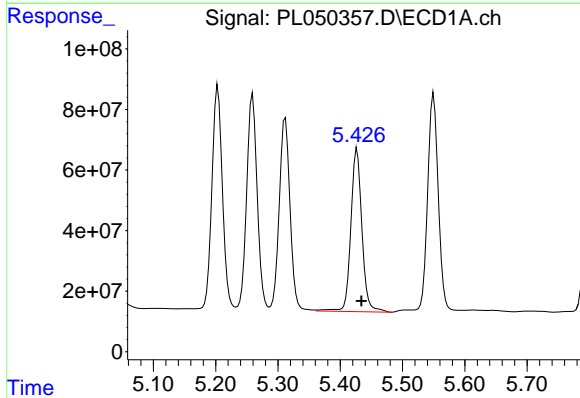
R.T.: 5.259 min
Delta R.T.: -0.007 min
Response: 832383180
Conc: 50.15 ng/ml

Instrument :
ECD_L
ClientSampleId :
PSTDCCC050



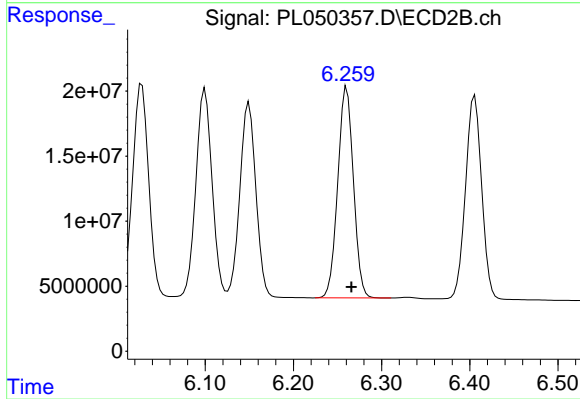
#11 alpha-Chlordane

R.T.: 6.100 min
Delta R.T.: -0.006 min
Response: 204334328
Conc: 55.25 ng/ml



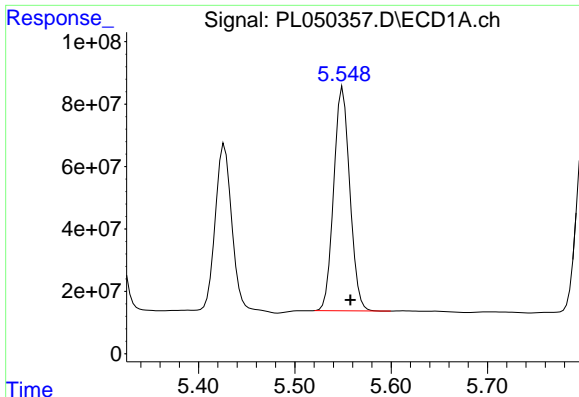
#12 4,4'-DDE

R.T.: 5.427 min
Delta R.T.: -0.007 min
Response: 672479466
Conc: 40.37 ng/ml



#12 4,4'-DDE

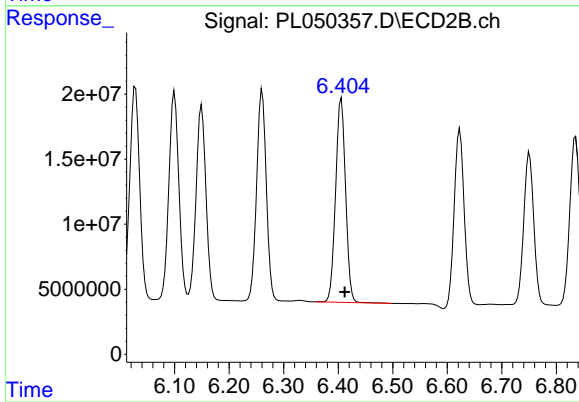
R.T.: 6.261 min
Delta R.T.: -0.005 min
Response: 200348323
Conc: 57.74 ng/ml



#13 Dieldrin

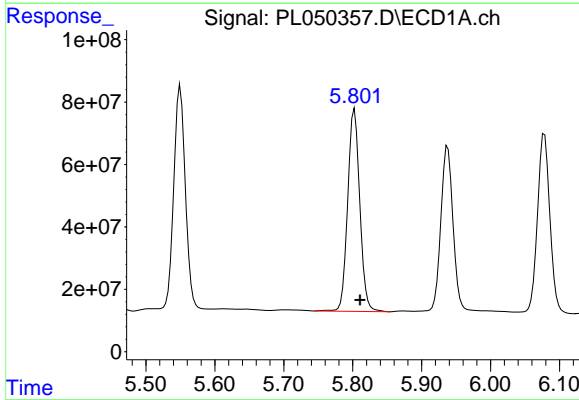
R.T.: 5.550 min
 Delta R.T.: -0.008 min
 Response: 832298826
 Conc: 49.96 ng/ml

Instrument :
 ECD_L
 ClientSampleId :
 PSTDCCC050



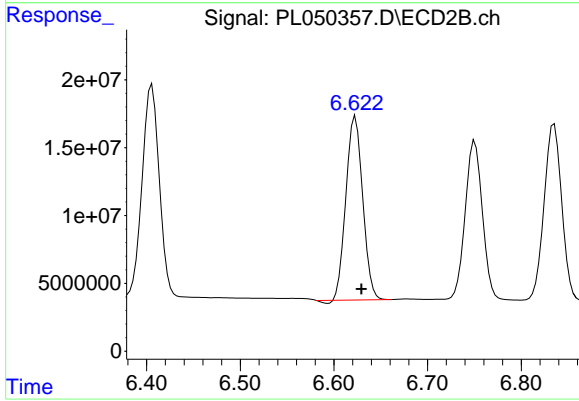
#13 Dieldrin

R.T.: 6.406 min
 Delta R.T.: -0.006 min
 Response: 199843477
 Conc: 56.33 ng/ml



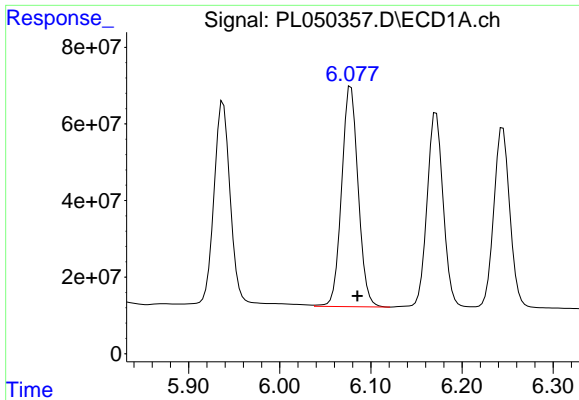
#14 Endrin

R.T.: 5.803 min
 Delta R.T.: -0.008 min
 Response: 791566584
 Conc: 49.43 ng/ml



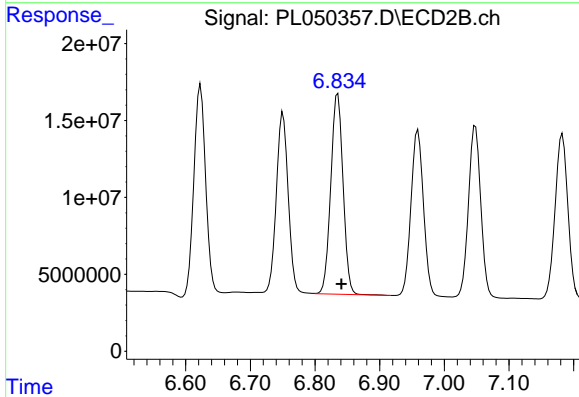
#14 Endrin

R.T.: 6.623 min
 Delta R.T.: -0.006 min
 Response: 168521228
 Conc: 53.38 ng/ml

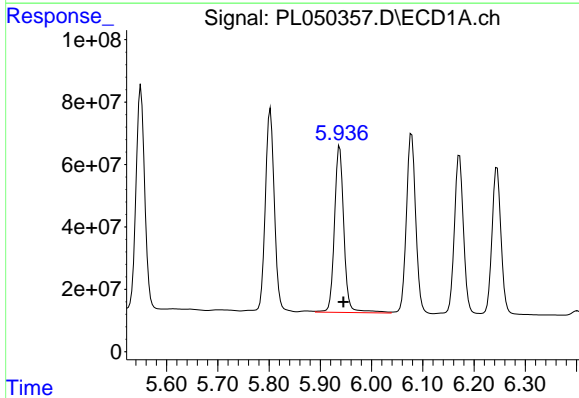


#15 Endosulfan II
 R.T.: 6.078 min
 Delta R.T.: -0.007 min
 Response: 724881956
 Conc: 49.75 ng/ml

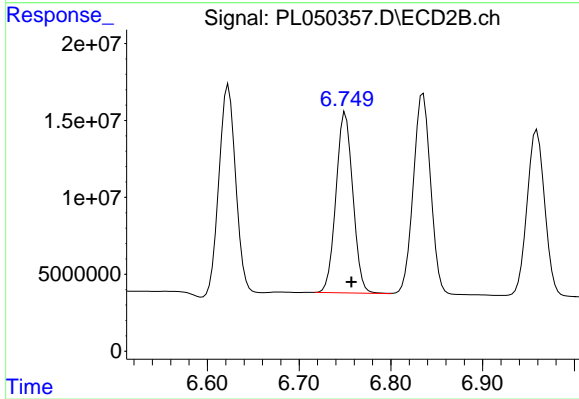
Instrument :
 ECD_L
 ClientSampled :
 PSTDCCC050



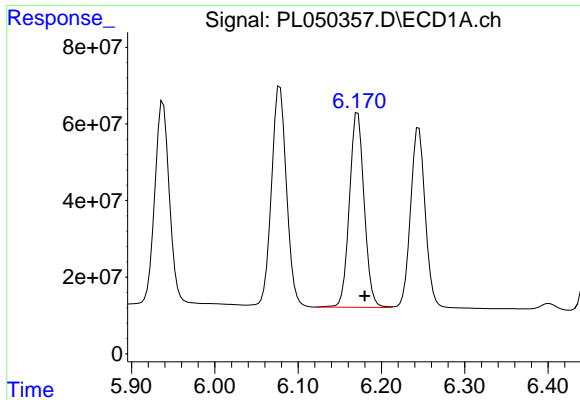
#15 Endosulfan II
 R.T.: 6.835 min
 Delta R.T.: -0.006 min
 Response: 171835273
 Conc: 53.35 ng/ml



#16 4,4'-DDD
 R.T.: 5.938 min
 Delta R.T.: -0.007 min
 Response: 684114823
 Conc: 54.19 ng/ml

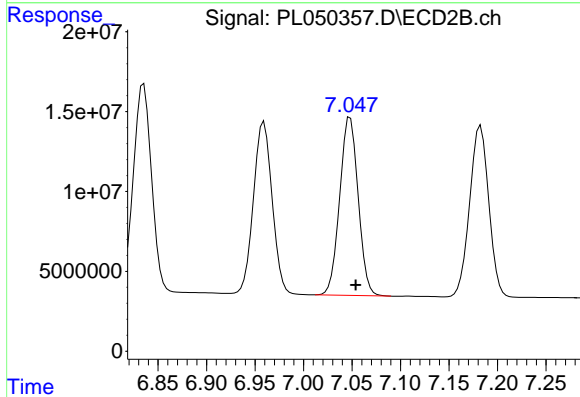


#16 4,4'-DDD
 R.T.: 6.751 min
 Delta R.T.: -0.006 min
 Response: 149887707
 Conc: 57.34 ng/ml

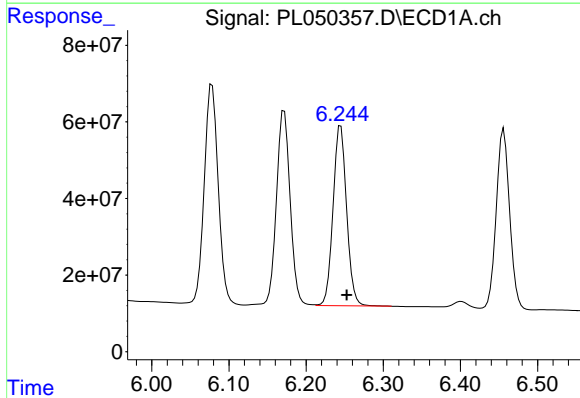


#17 4,4'-DDT
 R.T.: 6.172 min
 Delta R.T.: -0.008 min
 Response: 625635942
 Conc: 47.13 ng/ml

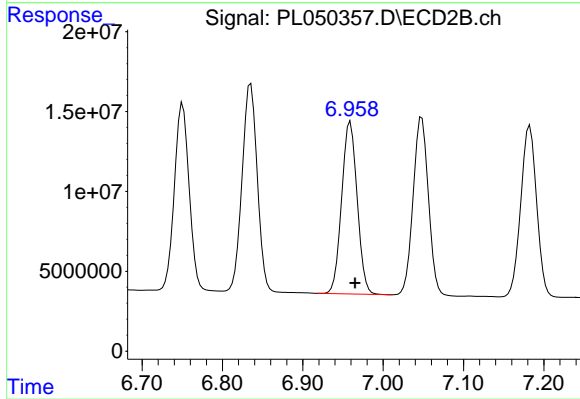
Instrument :
 ECD_L
 ClientSampled :
 PSTDCCC050



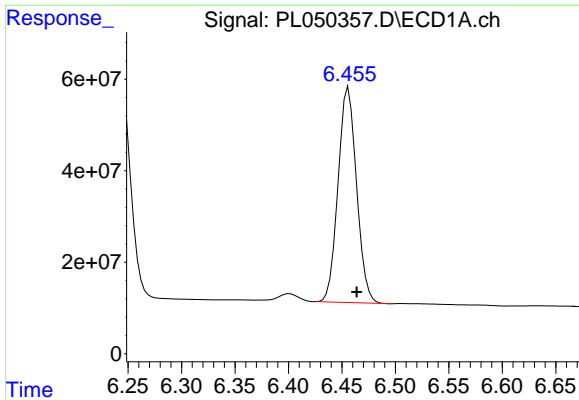
#17 4,4'-DDT
 R.T.: 7.048 min
 Delta R.T.: -0.006 min
 Response: 147702890
 Conc: 50.43 ng/ml



#18 Endrin aldehyde
 R.T.: 6.245 min
 Delta R.T.: -0.008 min
 Response: 575605336
 Conc: 48.73 ng/ml



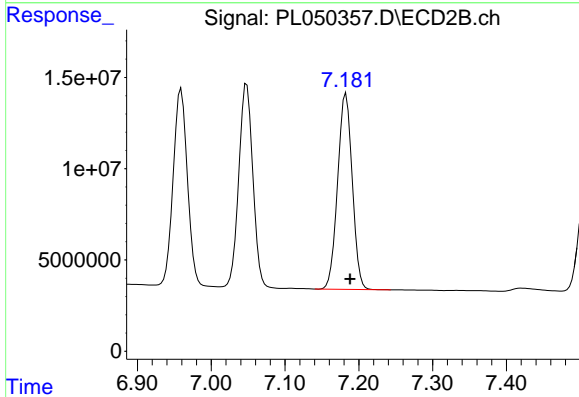
#18 Endrin aldehyde
 R.T.: 6.959 min
 Delta R.T.: -0.006 min
 Response: 144654570
 Conc: 52.67 ng/ml



#19 Endosulfan Sulfate

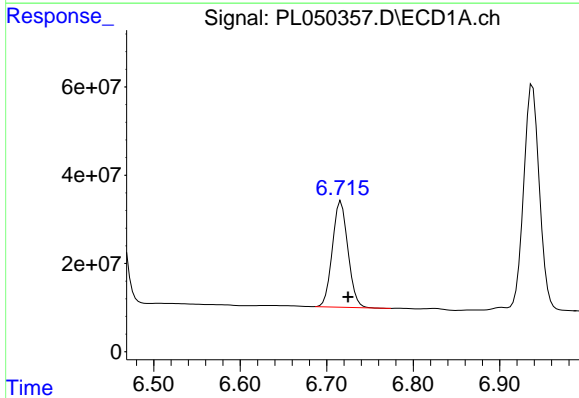
R.T.: 6.456 min
 Delta R.T.: -0.008 min
 Response: 565900834
 Conc: 43.65 ng/ml

Instrument :
 ECD_L
 ClientSampleId :
 PSTDCCC050



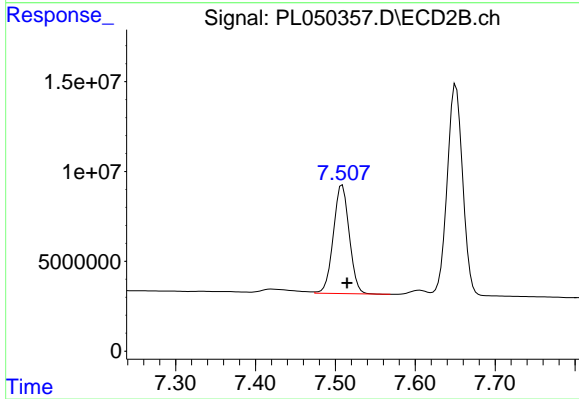
#19 Endosulfan Sulfate

R.T.: 7.183 min
 Delta R.T.: -0.005 min
 Response: 147504820
 Conc: 49.01 ng/ml



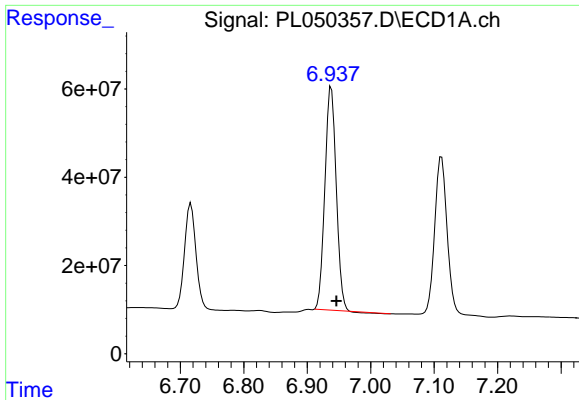
#20 Methoxychlor

R.T.: 6.717 min
 Delta R.T.: -0.008 min
 Response: 298625164
 Conc: 45.81 ng/ml



#20 Methoxychlor

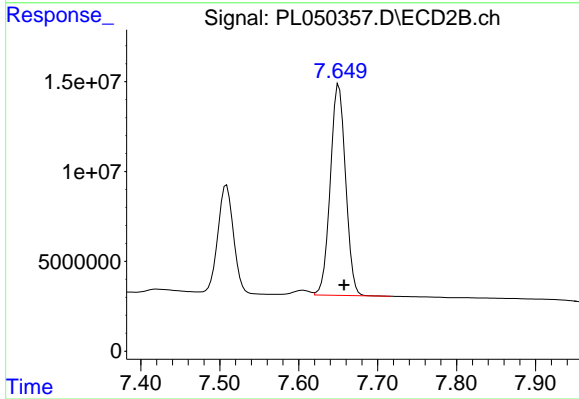
R.T.: 7.509 min
 Delta R.T.: -0.006 min
 Response: 83514157
 Conc: 50.11 ng/ml



#21 Endrin ketone

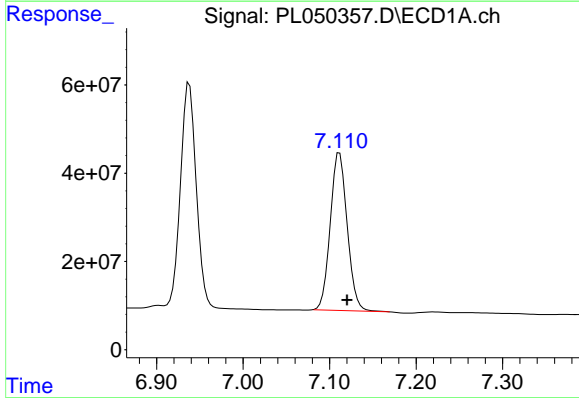
R.T.: 6.938 min
 Delta R.T.: -0.008 min
 Response: 627350444
 Conc: 44.63 ng/ml

Instrument :
 ECD_L
 ClientSampleId :
 PSTDCCC050



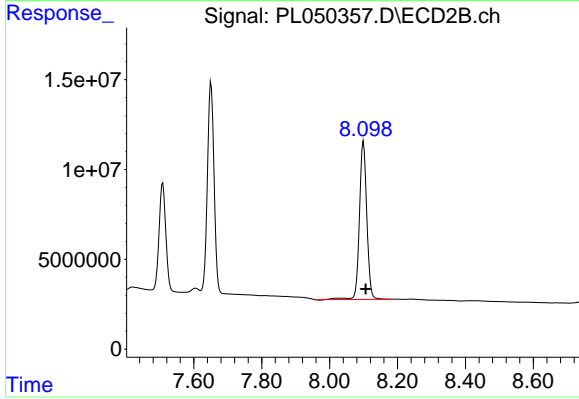
#21 Endrin ketone

R.T.: 7.651 min
 Delta R.T.: -0.006 min
 Response: 157896917
 Conc: 50.67 ng/ml



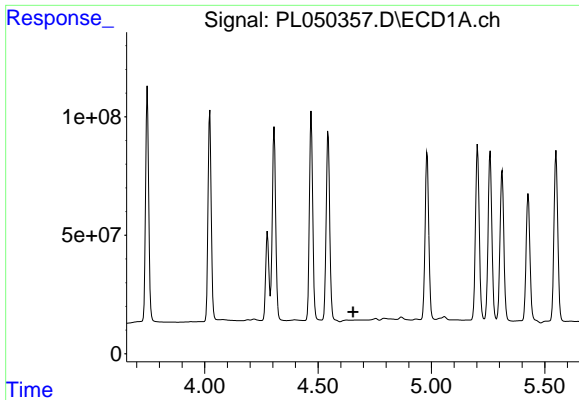
#22 Mirex

R.T.: 7.112 min
 Delta R.T.: -0.009 min
 Response: 483955249
 Conc: 46.82 ng/ml



#22 Mirex

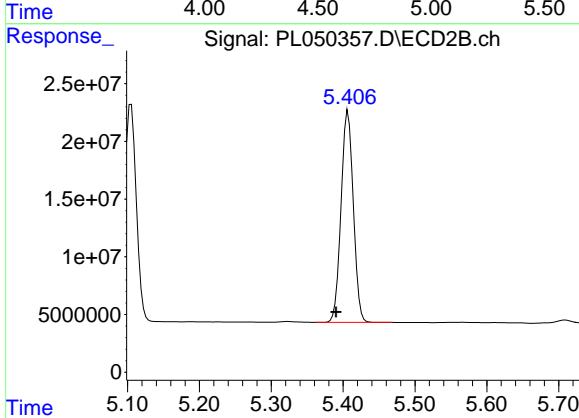
R.T.: 8.100 min
 Delta R.T.: -0.007 min
 Response: 133186711
 Conc: 52.67 ng/ml



#24 Chlordane-2

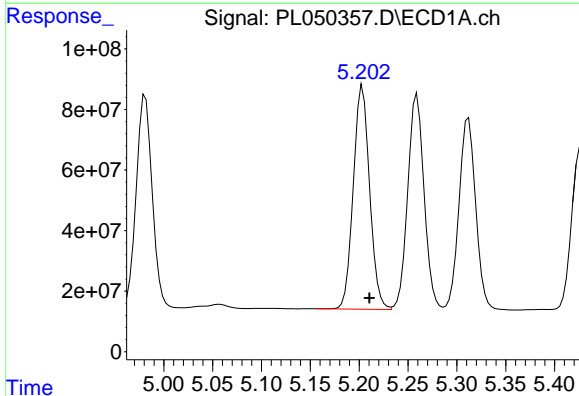
R.T.: 0.000 min
 Exp R.T.: 4.655 min
 Response: 0
 Conc: N.D.

Instrument :
 ECD_L
 ClientSampleId :
 PSTDCCC050



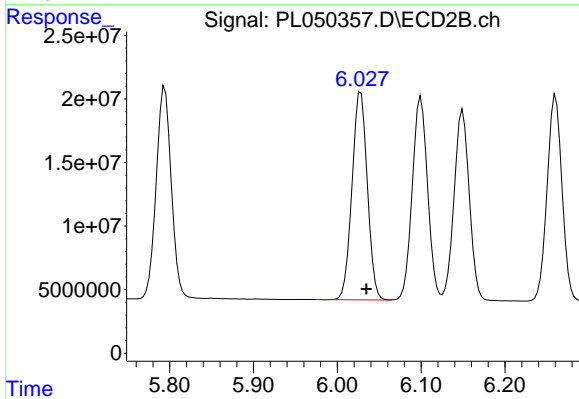
#24 Chlordane-2

R.T.: 5.407 min
 Delta R.T.: 0.017 min
 Response: 216870908
 Conc: 1396.10 ng/ml



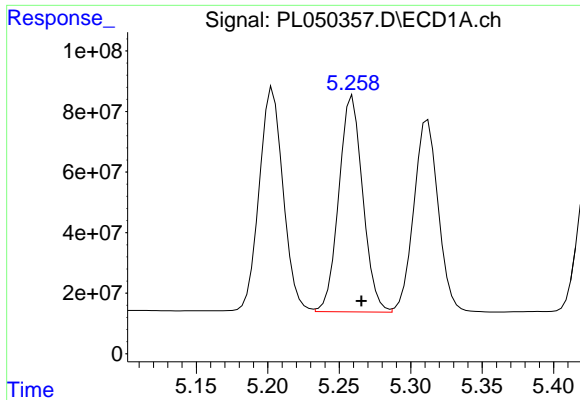
#25 Chlordane-3

R.T.: 5.204 min
 Delta R.T.: -0.007 min
 Response: 859293111
 Conc: 457.51 ng/ml



#25 Chlordane-3

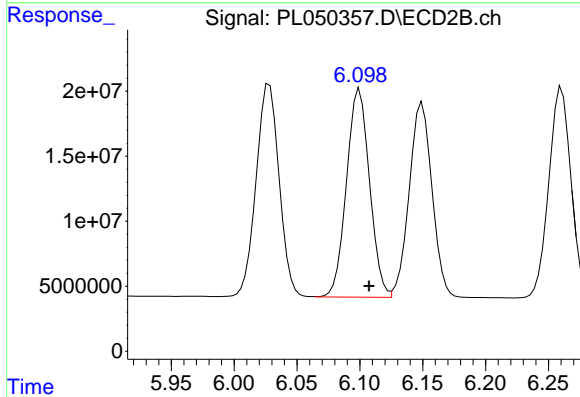
R.T.: 6.028 min
 Delta R.T.: -0.007 min
 Response: 208171292
 Conc: 418.33 ng/ml



#26 Chlordane-4

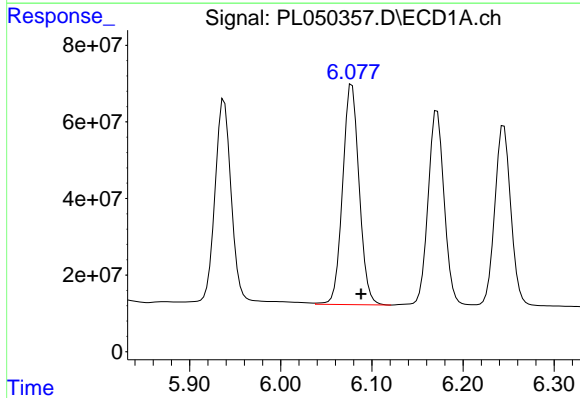
R.T.: 5.259 min
 Delta R.T.: -0.006 min
 Response: 832383180
 Conc: 476.97 ng/ml

Instrument :
 ECD_L
 ClientSampleId :
 PSTDCCC050



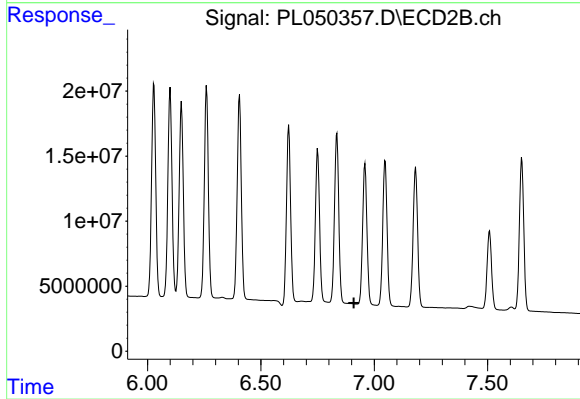
#26 Chlordane-4

R.T.: 6.100 min
 Delta R.T.: -0.008 min
 Response: 204334328
 Conc: 343.80 ng/ml



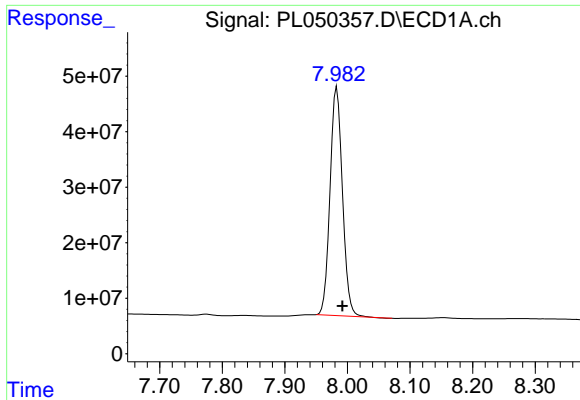
#27 Chlordane-5

R.T.: 6.078 min
 Delta R.T.: -0.010 min
 Response: 724881956
 Conc: 1291.65 ng/ml



#27 Chlordane-5

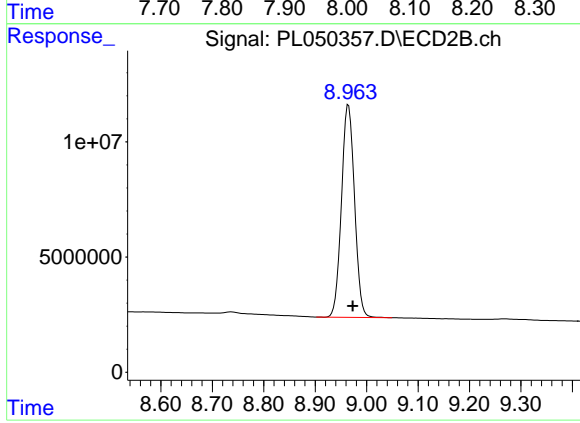
R.T.: 0.000 min
 Exp R.T. : 6.910 min
 Response: 0
 Conc: N.D.



#28 Decachlorobiphenyl

R.T.: 7.983 min
Delta R.T.: -0.009 min
Response: 567648502
Conc: 44.67 ng/ml

Instrument :
ECD_L
ClientSampleId :
PSTDCCC050



#28 Decachlorobiphenyl

R.T.: 8.965 min
Delta R.T.: -0.008 min
Response: 162975443
Conc: 48.55 ng/ml