

Data Path : Z:\pestpcbsrv\HPCHEM1\ECD\_L\Data\PL071222\  
 Data File : PL076375.D  
 Signal(s) : Signal #1: ECD1A.ch Signal #2: ECD2B.ch  
 Acq On : 12 Jul 2022 10:08  
 Operator : AR\AJ  
 Sample : HEXANE  
 Misc :  
 ALS Vial : 1 Sample Multiplier: 1

Instrument :  
 ECD\_L  
 ClientSampleId :

Integration File signal 1: autoint1.e  
 Integration File signal 2: autoint2.e  
 Quant Time: Jul 12 14:11:01 2022  
 Quant Method : Z:\pestpcbsrv\HPCHEM1\ECD\_L\methods\PL070822.M  
 Quant Title : GC Extractables  
 QLast Update : Fri Jul 08 16:50:17 2022  
 Response via : Initial Calibration  
 Integrator: ChemStation

Volume Inj. : 1 µl  
 Signal #1 Phase : ZB-MR1 Signal #2 Phase: ZB-MR1  
 Signal #1 Info : 30M x 0.32mm x0.2 Signal #2 Info : 30M x 0.32mm x0.5µm

Compound	RT#1	RT#2	Resp#1	Resp#2	ng/ml	ng/ml
-----						
System Monitoring Compounds						
Target Compounds						
2) A alpha-BHC	6.212	0.000	343841	0	0.367	N.D. #
3) MA gamma-BHC...	6.603f	5.751	64652	63077	0.074	0.026 #
4) MA Heptachlor	0.000	6.166	0	807937	N.D.	0.333 #
5) MB Aldrin	0.000	6.509f	0	211721	N.D.	0.098 #
6) B beta-BHC	0.000	6.119	0	226606	N.D.	0.207 #
8) B Heptachlo...	8.130	0.000	2788270	0	3.582	N.D. #
10) B gamma-Chl...	0.000	7.337	0	1927075	N.D.	0.966 #
14) MA Endrin	0.000	8.055f	0	1507085	N.D.	1.042 #
17) MA 4,4'-DDT	0.000	8.472f	0	279880	N.D.	0.179 #
18) B Endrin al...	0.000	8.512	0	1575896	N.D.	1.258 #
20) A Methoxychlor	0.000	9.058	0	423049	N.D.	0.496 #
21) B Endrin ke...	10.165	0.000	2567792	0	3.798	N.D. #
23) Chlordane-1	0.000	5.937	0	73308	N.D.	1.303 #
25) Chlordane-3	0.000	7.337	0	1927075	N.D.	11.379 #
27) Chlordane-5	0.000	8.129f	0	938325	N.D.	18.395 #
-----						

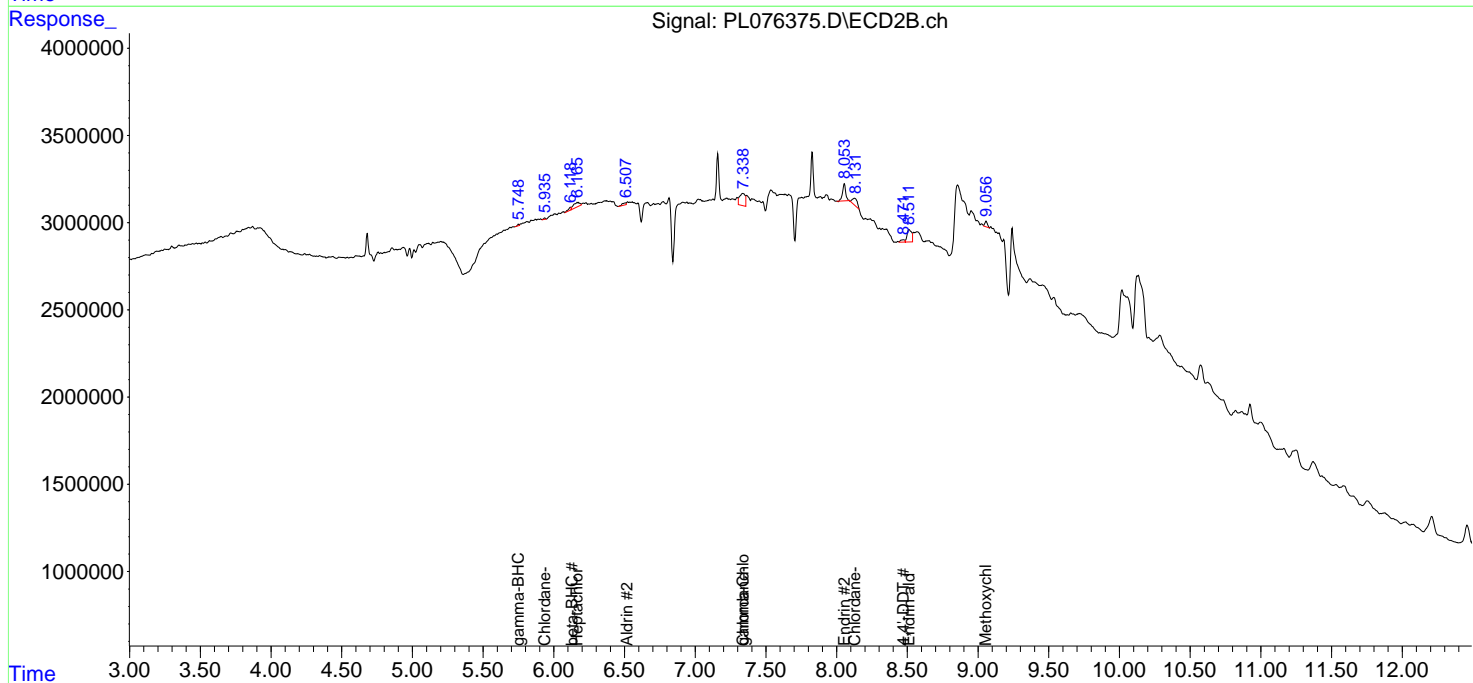
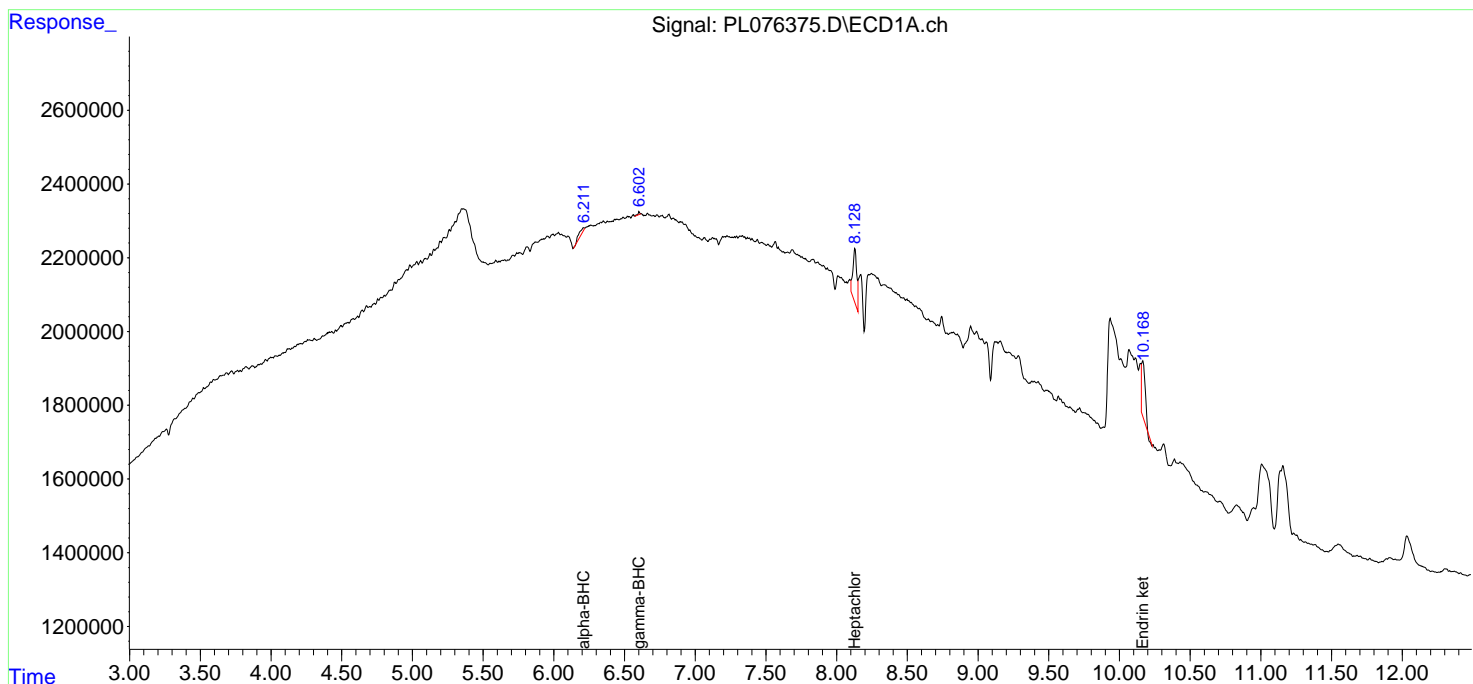
(f)=RT Delta > 1/2 Window (#)=Amounts differ by > 25% (m)=manual int.

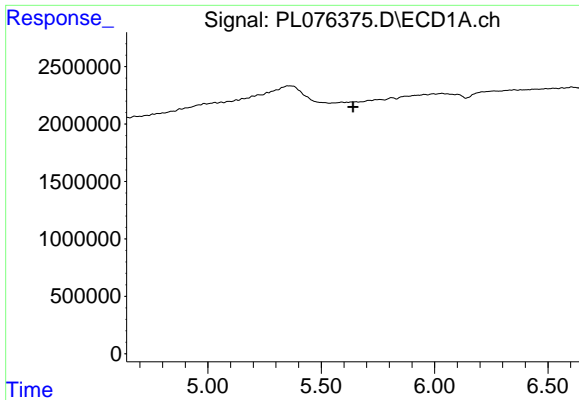
Data Path : Z:\pestpcbsrv\HPCHEM1\ECD\_L\Data\PL071222\  
 Data File : PL076375.D  
 Signal(s) : Signal #1: ECD1A.ch Signal #2: ECD2B.ch  
 Acq On : 12 Jul 2022 10:08  
 Operator : AR\AJ  
 Sample : HEXANE  
 Misc :  
 ALS Vial : 1 Sample Multiplier: 1

Instrument :  
 ECD\_L  
 ClientSampleId :

Integration File signal 1: autoint1.e  
 Integration File signal 2: autoint2.e  
 Quant Time: Jul 12 14:11:01 2022  
 Quant Method : Z:\pestpcbsrv\HPCHEM1\ECD\_L\methods\PL070822.M  
 Quant Title : GC Extractables  
 QLast Update : Fri Jul 08 16:50:17 2022  
 Response via : Initial Calibration  
 Integrator: ChemStation

Volume Inj. : 1 µl  
 Signal #1 Phase : ZB-MR2 Signal #2 Phase: ZB-MR1  
 Signal #1 Info : 30M x 0.32mm x0.2 Signal #2 Info : 30M x 0.32mm x0.5µm

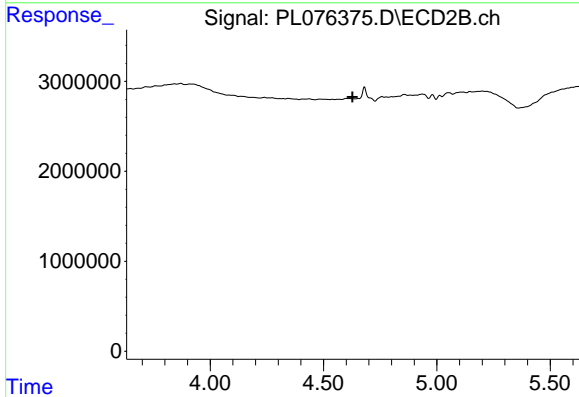




#1 Tetrachloro-m-xylene

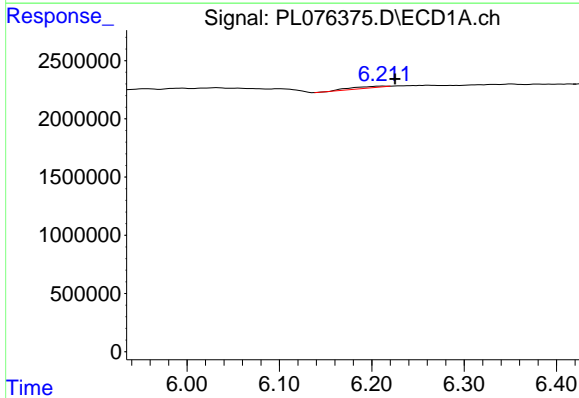
R.T.: 0.000 min  
 Exp R.T.: 5.641 min  
 Response: 0  
 Conc: N.D.

Instrument :  
 ECD\_L  
 ClientSampleId :



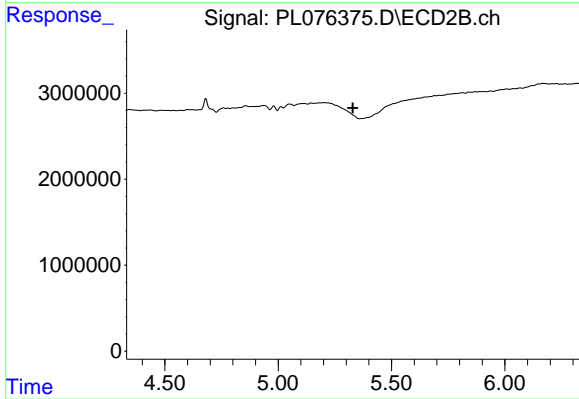
#1 Tetrachloro-m-xylene

R.T.: 0.000 min  
 Exp R.T.: 4.628 min  
 Response: 0  
 Conc: N.D.



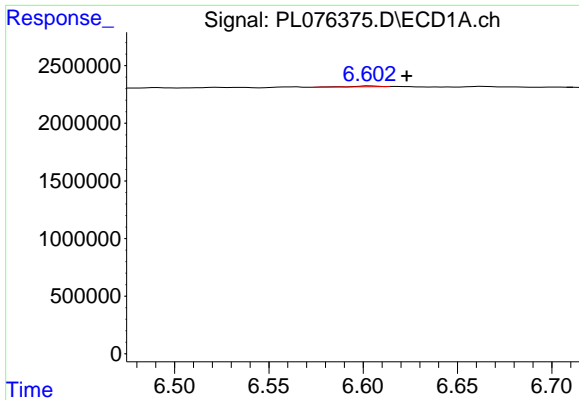
#2 alpha-BHC

R.T.: 6.212 min  
 Delta R.T.: -0.013 min  
 Response: 343841  
 Conc: 0.37 ng/ml



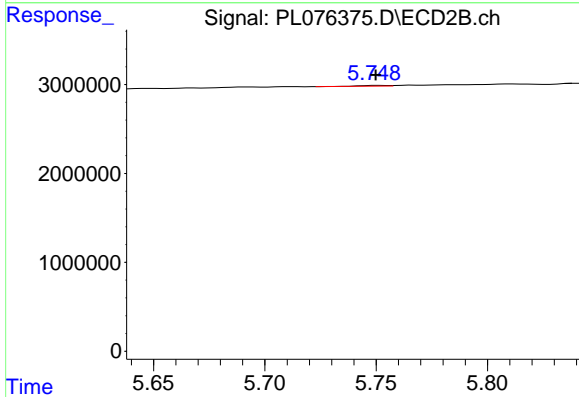
#2 alpha-BHC

R.T.: 0.000 min  
 Exp R.T.: 5.329 min  
 Response: 0  
 Conc: N.D.

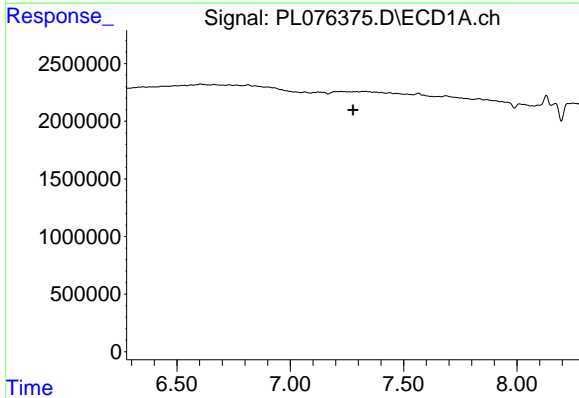


#3 gamma-BHC (Lindane)  
 R.T.: 6.603 min  
 Delta R.T.: -0.020 min  
 Response: 64652  
 Conc: 0.07 ng/ml

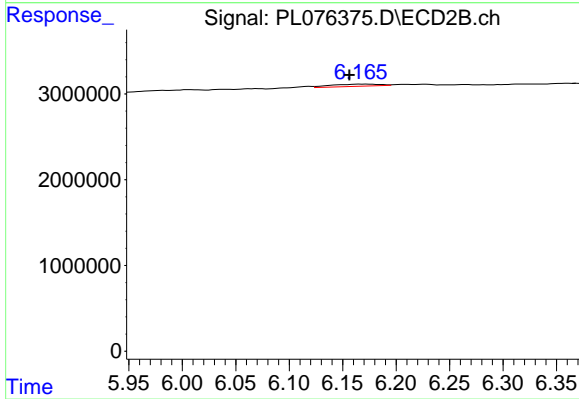
Instrument :  
 ECD\_L  
 ClientSampleId :



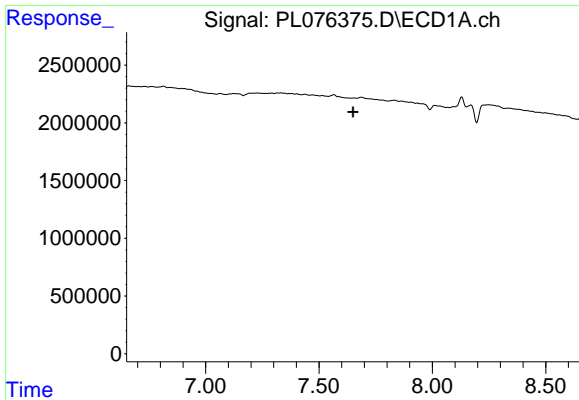
#3 gamma-BHC (Lindane)  
 R.T.: 5.751 min  
 Delta R.T.: 0.001 min  
 Response: 63077  
 Conc: 0.03 ng/ml



#4 Heptachlor  
 R.T.: 0.000 min  
 Exp R.T. : 7.278 min  
 Response: 0  
 Conc: N.D.

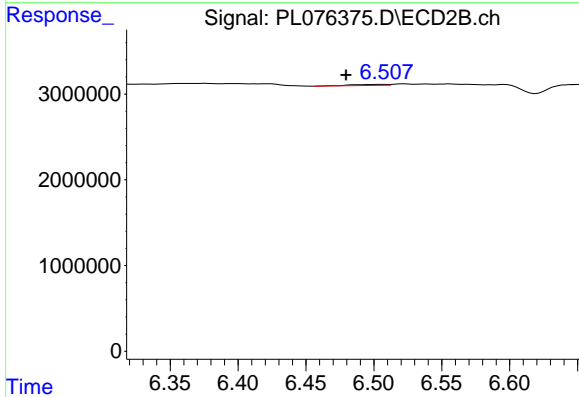


#4 Heptachlor  
 R.T.: 6.166 min  
 Delta R.T.: 0.010 min  
 Response: 807937  
 Conc: 0.33 ng/ml

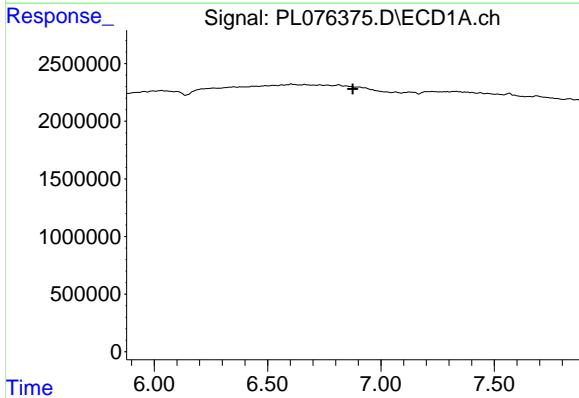


#5 Aldrin  
 R.T.: 0.000 min  
 Exp R.T.: 7.651 min  
 Response: 0  
 Conc: N.D.

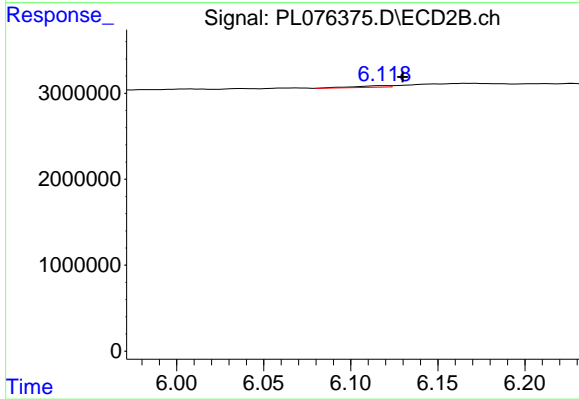
Instrument :  
 ECD\_L  
 ClientSampleId :



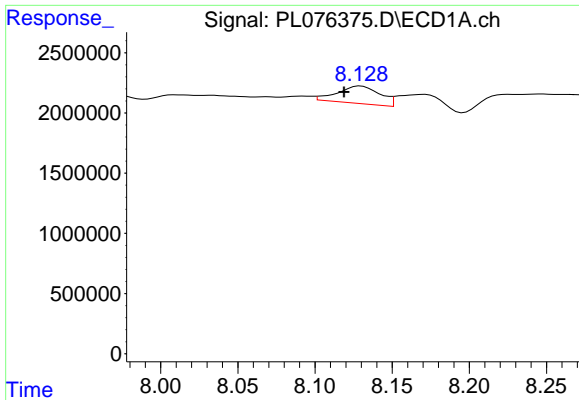
#5 Aldrin  
 R.T.: 6.509 min  
 Delta R.T.: 0.029 min  
 Response: 211721  
 Conc: 0.10 ng/ml



#6 beta-BHC  
 R.T.: 0.000 min  
 Exp R.T.: 6.876 min  
 Response: 0  
 Conc: N.D.

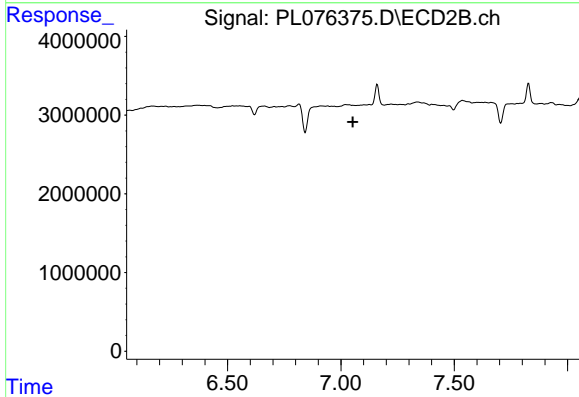


#6 beta-BHC  
 R.T.: 6.119 min  
 Delta R.T.: -0.011 min  
 Response: 226606  
 Conc: 0.21 ng/ml

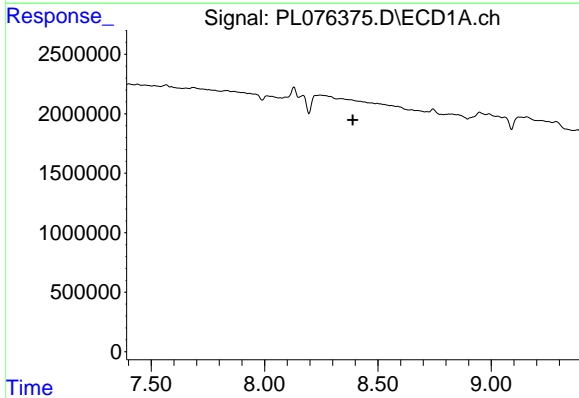


#8 Heptachlor epoxide  
 R.T.: 8.130 min  
 Delta R.T.: 0.011 min  
 Response: 2788270  
 Conc: 3.58 ng/ml

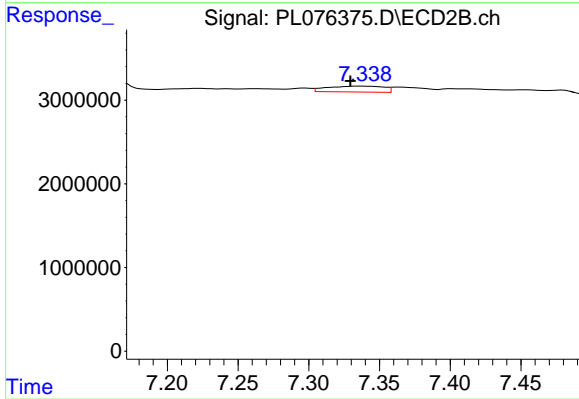
Instrument :  
 ECD\_L  
 ClientSampleId :



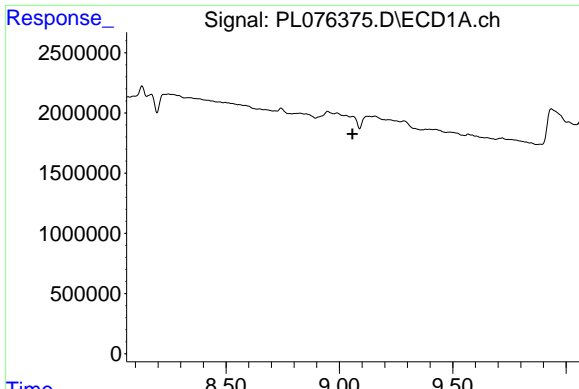
#8 Heptachlor epoxide  
 R.T.: 0.000 min  
 Exp R.T. : 7.053 min  
 Response: 0  
 Conc: N.D.



#10 gamma-Chlordane  
 R.T.: 0.000 min  
 Exp R.T. : 8.389 min  
 Response: 0  
 Conc: N.D.



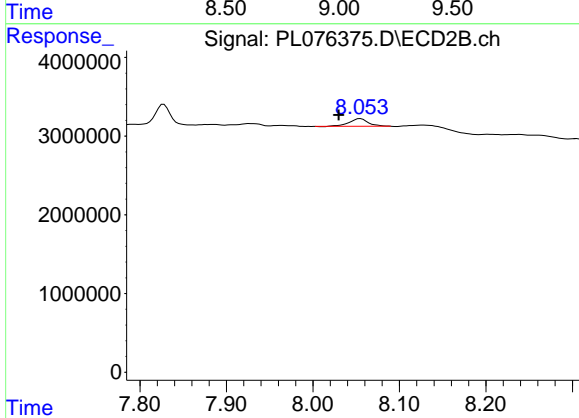
#10 gamma-Chlordane  
 R.T.: 7.337 min  
 Delta R.T.: 0.007 min  
 Response: 1927075  
 Conc: 0.97 ng/ml



#14 Endrin

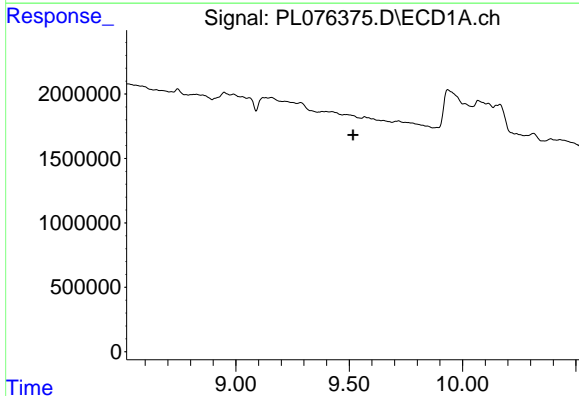
R.T.: 0.000 min  
 Exp R.T.: 9.058 min  
 Response: 0  
 Conc: N.D.

Instrument :  
 ECD\_L  
 ClientSampleId :



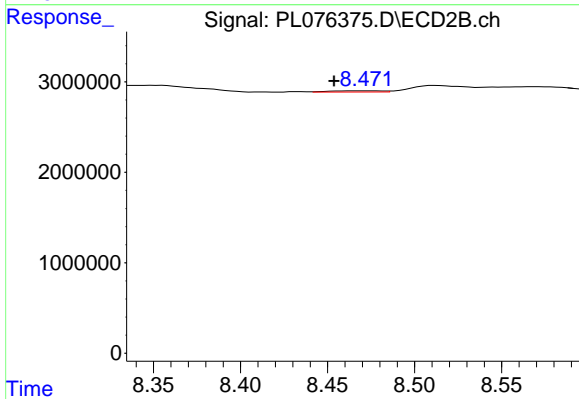
#14 Endrin

R.T.: 8.055 min  
 Delta R.T.: 0.025 min  
 Response: 1507085  
 Conc: 1.04 ng/ml



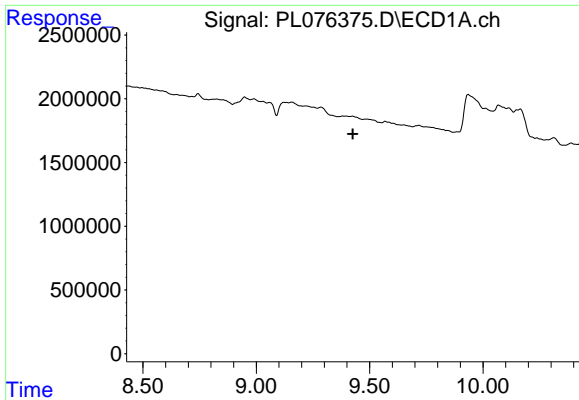
#17 4,4'-DDT

R.T.: 0.000 min  
 Exp R.T.: 9.517 min  
 Response: 0  
 Conc: N.D.



#17 4,4'-DDT

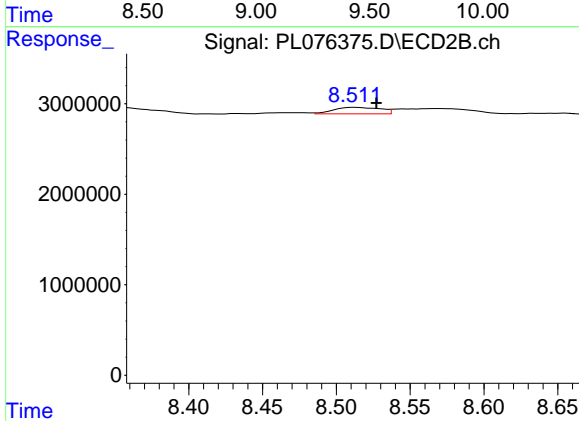
R.T.: 8.472 min  
 Delta R.T.: 0.019 min  
 Response: 279880  
 Conc: 0.18 ng/ml



#18 Endrin aldehyde

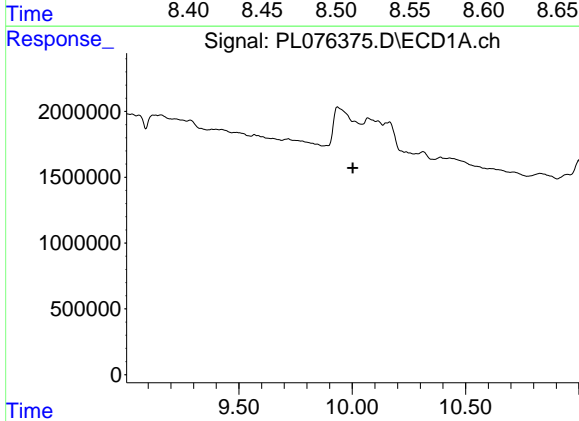
R.T.: 0.000 min  
 Exp R.T.: 9.426 min  
 Response: 0  
 Conc: N.D.

Instrument :  
 ECD\_L  
 ClientSampleId :



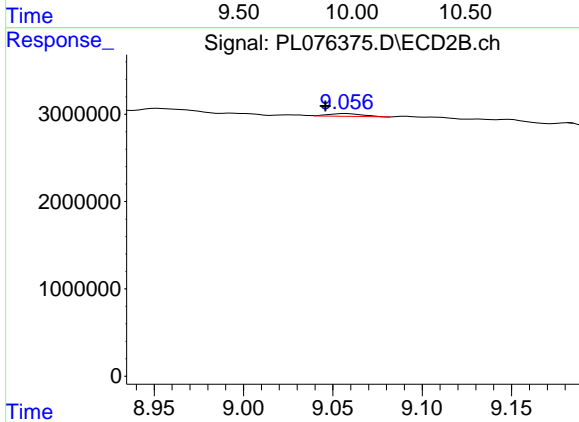
#18 Endrin aldehyde

R.T.: 8.512 min  
 Delta R.T.: -0.015 min  
 Response: 1575896  
 Conc: 1.26 ng/ml



#20 Methoxychlor

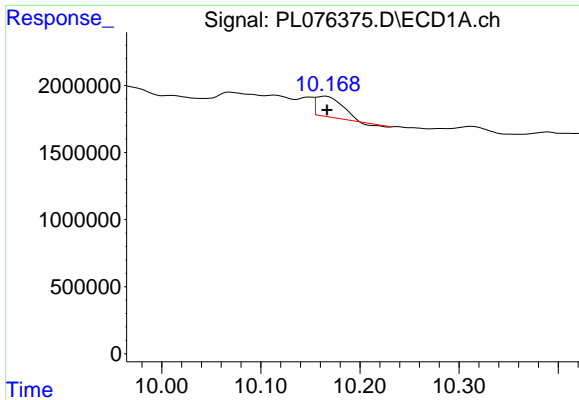
R.T.: 0.000 min  
 Exp R.T.: 10.002 min  
 Response: 0  
 Conc: N.D.



#20 Methoxychlor

R.T.: 9.058 min  
 Delta R.T.: 0.012 min  
 Response: 423049  
 Conc: 0.50 ng/ml

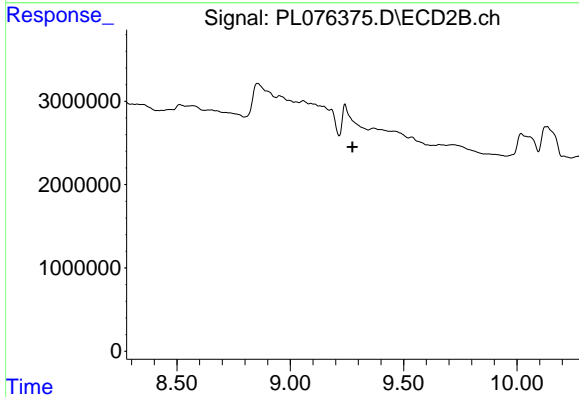




#21 Endrin ketone

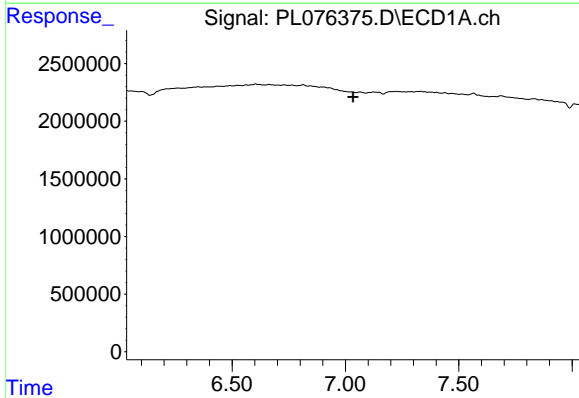
R.T.: 10.165 min  
 Delta R.T.: -0.001 min  
 Response: 2567792  
 Conc: 3.80 ng/ml

Instrument :  
 ECD\_L  
 ClientSampleId :



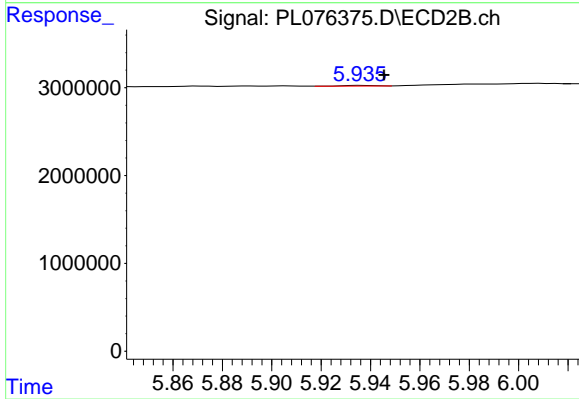
#21 Endrin ketone

R.T.: 0.000 min  
 Exp R.T. : 9.275 min  
 Response: 0  
 Conc: N.D.



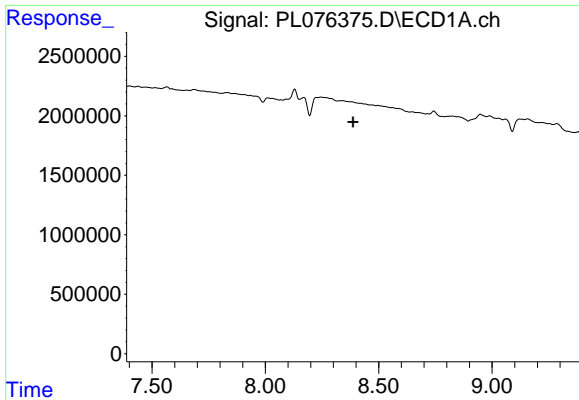
#23 Chlordane-1

R.T.: 0.000 min  
 Exp R.T. : 7.034 min  
 Response: 0  
 Conc: N.D.



#23 Chlordane-1

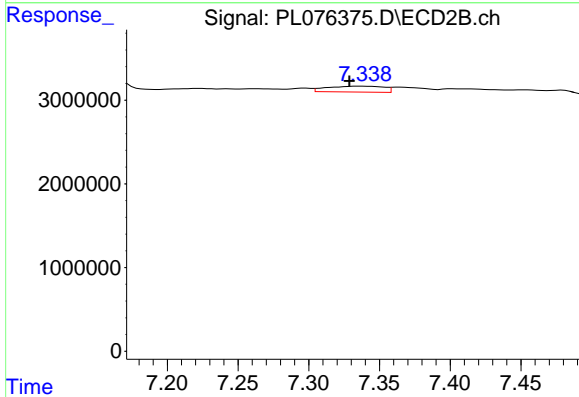
R.T.: 5.937 min  
 Delta R.T.: -0.009 min  
 Response: 73308  
 Conc: 1.30 ng/ml



#25 Chlordane-3

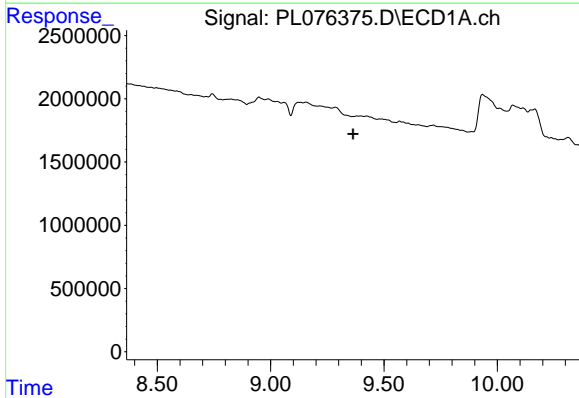
R.T.: 0.000 min  
 Exp R.T.: 8.388 min  
 Response: 0  
 Conc: N.D.

Instrument :  
 ECD\_L  
 ClientSampleId :



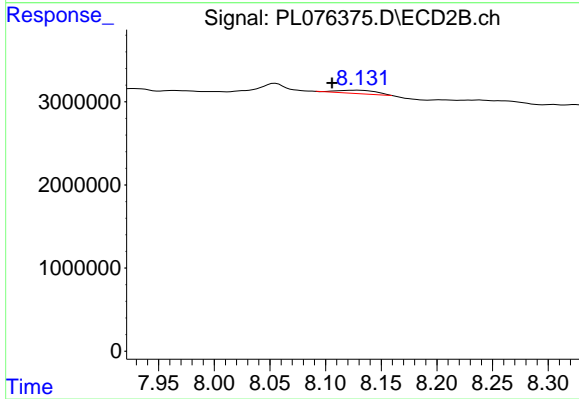
#25 Chlordane-3

R.T.: 7.337 min  
 Delta R.T.: 0.008 min  
 Response: 1927075  
 Conc: 11.38 ng/ml



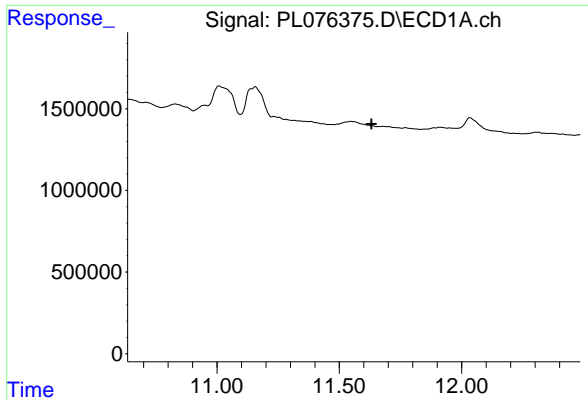
#27 Chlordane-5

R.T.: 0.000 min  
 Exp R.T.: 9.364 min  
 Response: 0  
 Conc: N.D.



#27 Chlordane-5

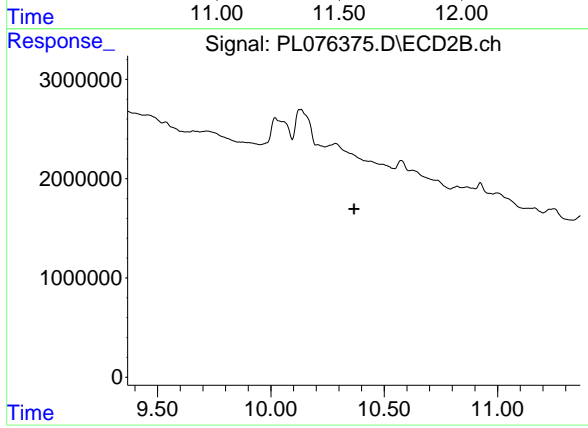
R.T.: 8.129 min  
 Delta R.T.: 0.023 min  
 Response: 938325  
 Conc: 18.40 ng/ml



#28 Decachlorobiphenyl

R.T.: 0.000 min  
Exp R.T. : 11.632 min  
Response: 0  
Conc: N.D.

Instrument :  
ECD\_L  
ClientSampleId :



#28 Decachlorobiphenyl

R.T.: 0.000 min  
Exp R.T. : 10.367 min  
Response: 0  
Conc: N.D.