

Data Path : Z:\pestpcbsrv\HPCHEM1\ECD_L\Data\PL071320\
 Data File : PL059846.D
 Signal(s) : Signal #1: ECD1A.ch Signal #2: ECD2B.ch
 Acq On : 13 Jul 2020 12:53
 Operator : DD\AJ
 Sample : PSTDCCC050
 Misc :
 ALS Vial : 4 Sample Multiplier: 1

Instrument :
 ECD_L
 ClientSampleId :
 PSTDCCC050

Integration File signal 1: autoint1.e
 Integration File signal 2: autoint2.e
 Quant Time: Jul 13 14:03:37 2020
 Quant Method : Z:\pestpcbsrv\HPCHEM1\ECD_L\methods\PL071020.M
 Quant Title : GC Extractables
 QLast Update : Fri Jul 10 18:52:06 2020
 Response via : Initial Calibration
 Integrator: ChemStation

Volume Inj. : 1 µl
 Signal #1 Phase : ZB-MR2 Signal #2 Phase: ZB-MR1
 Signal #1 Info : 30M x 0.32mm x0.2 Signal #2 Info : 30M x 0.32mm x0.5µm

	Compound	RT#1	RT#2	Resp#1	Resp#2	ng/ml	ng/ml

System Monitoring Compounds							
1)	SA Tetrachlo...	3.465	4.012	99948575	136.3E6	51.674	51.423
28)	SA Decachlor...	8.228	9.103	79199522	103.5E6	48.143	49.480
Target Compounds							
2)	A alpha-BHC	3.902	4.401	147.4E6	203.9E6	51.298	52.807
3)	MA gamma-BHC...	4.186	4.687	127.9E6	190.2E6	51.780	52.430
4)	MA Heptachlor	4.489	5.199	114.8E6	174.4E6	51.179	51.837
5)	MB Aldrin	4.737	5.505	100.4E6	161.4E6	50.903	51.832
6)	B beta-BHC	4.436	4.857	51155300	79578995	50.091	52.637
7)	B delta-BHC	4.641	5.075	115.3E6	174.1E6	51.884	55.881
8)	B Heptachlo...	5.181	5.892	93364813	153.0E6	50.866	56.811
9)	A Endosulfan I	5.521	6.250	85341375	139.2E6	50.729	52.175
10)	B gamma-Chl...	5.409	6.127	91909403	154.4E6	50.663	53.906
11)	B alpha-Chl...	5.468	6.200	91364872	150.4E6	50.665	52.605
12)	B 4,4'-DDE	5.633	6.358	84248785	138.2E6	50.589	51.648
13)	MA Dieldrin	5.764	6.508	89626679	142.9E6	50.793	51.641
14)	MA Endrin	6.021	6.726	75057524	111.0E6	51.566	52.179
15)	B Endosulfa...	6.295	6.936	82832765	127.6E6	49.596	50.794
16)	A 4,4'-DDD	6.149	6.849	74683873	119.5E6	48.923	52.043
17)	MA 4,4'-DDT	6.391	7.148	66926065	103.3E6	51.475	52.465
18)	B Endrin al...	6.462	7.060	70275341	109.9E6	49.262	50.585
19)	B Endosulfa...	6.676	7.284	79424362	119.5E6	48.317	51.086
20)	A Methoxychlor	6.938	7.609	38439307	58150403	51.391	51.223
21)	B Endrin ke...	7.166	7.756	95605445	131.8E6	50.942	51.016
22)	Mirex	7.357	8.212	70121313	92518970	49.288	50.058

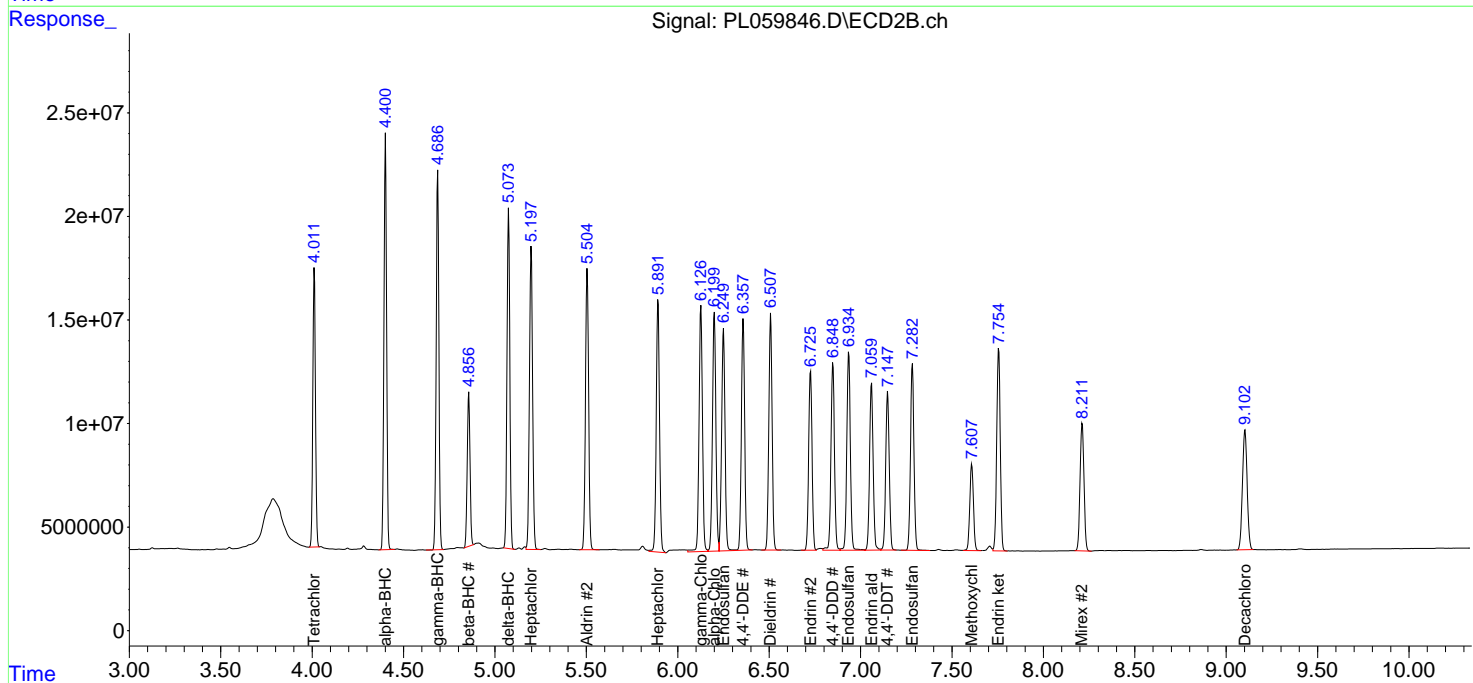
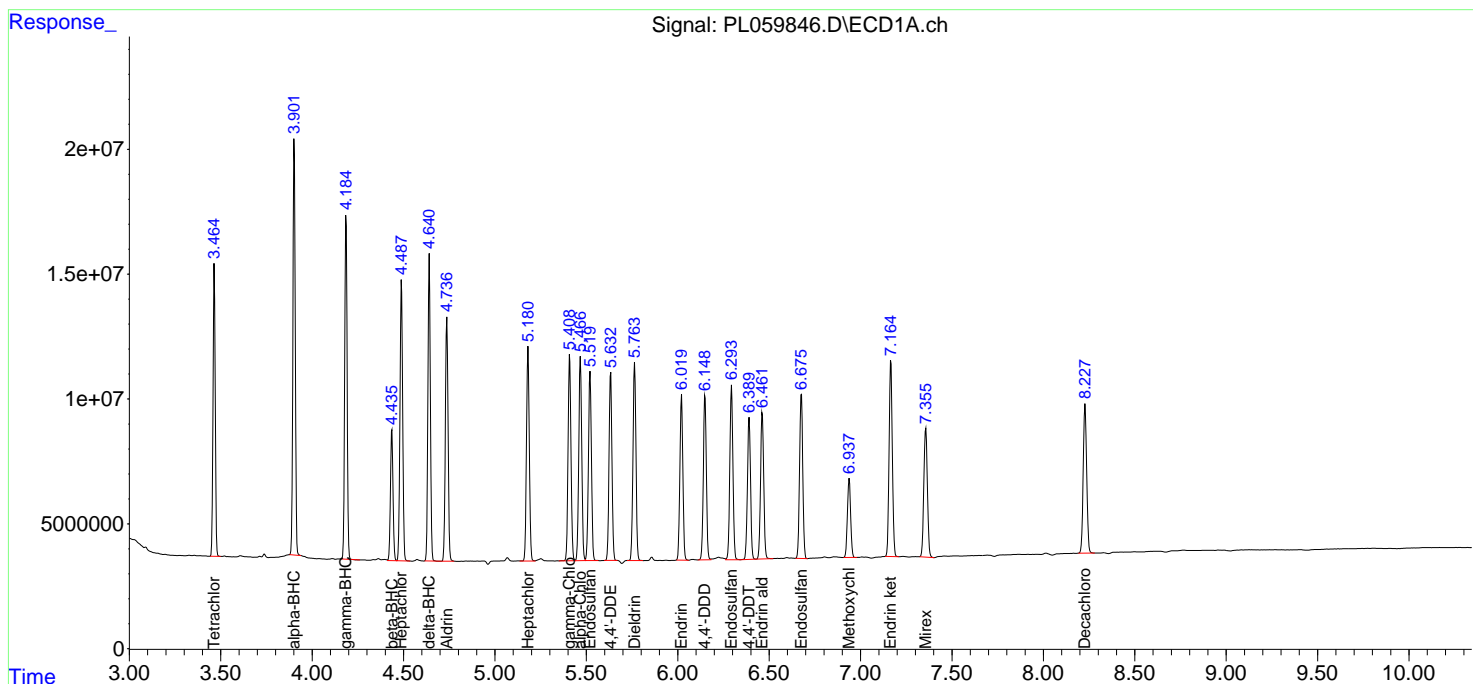
(f)=RT Delta > 1/2 Window (#)=Amounts differ by > 25% (m)=manual int.

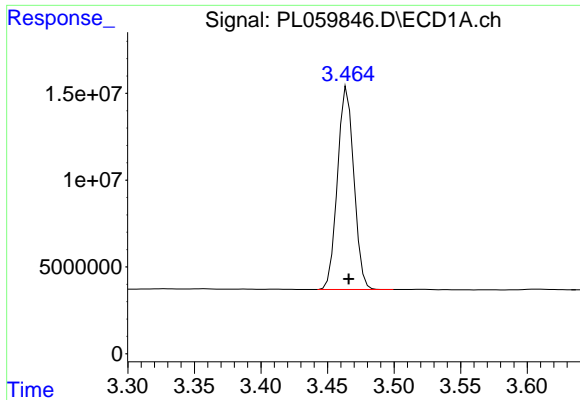
Data Path : Z:\pestpcbsrv\HPCHEM1\ECD_L\Data\PL071320\
 Data File : PL059846.D
 Signal(s) : Signal #1: ECD1A.ch Signal #2: ECD2B.ch
 Acq On : 13 Jul 2020 12:53
 Operator : DD\AJ
 Sample : PSTDCCC050
 Misc :
 ALS Vial : 4 Sample Multiplier: 1

Instrument :
 ECD_L
 ClientSampleId :
 PSTDCCC050

Integration File signal 1: autoint1.e
 Integration File signal 2: autoint2.e
 Quant Time: Jul 13 14:03:37 2020
 Quant Method : Z:\pestpcbsrv\HPCHEM1\ECD_L\methods\PL071020.M
 Quant Title : GC Extractables
 QLast Update : Fri Jul 10 18:52:06 2020
 Response via : Initial Calibration
 Integrator: ChemStation

Volume Inj. : 1 µl
 Signal #1 Phase : ZB-MR2 Signal #2 Phase: ZB-MR1
 Signal #1 Info : 30M x 0.32mm x0.2 Signal #2 Info : 30M x 0.32mm x0.5µm

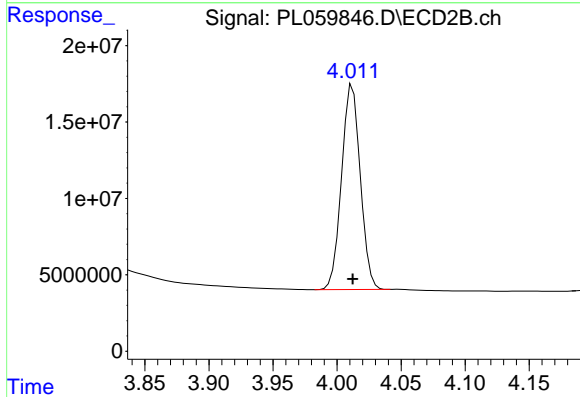




#1 Tetrachloro-m-xylene

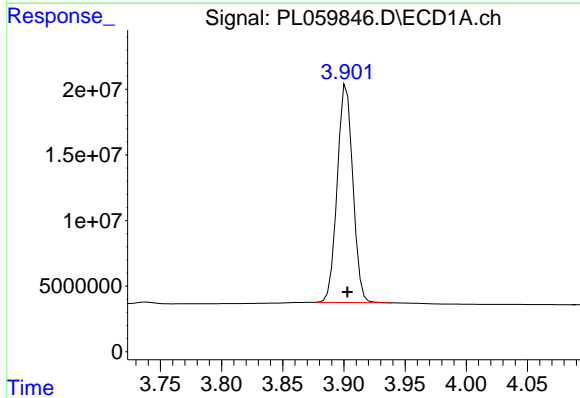
R.T.: 3.465 min
 Delta R.T.: -0.001 min
 Response: 99948575
 Conc: 51.67 ng/ml

Instrument :
 ECD_L
 ClientSampleId :
 PSTDCCC050



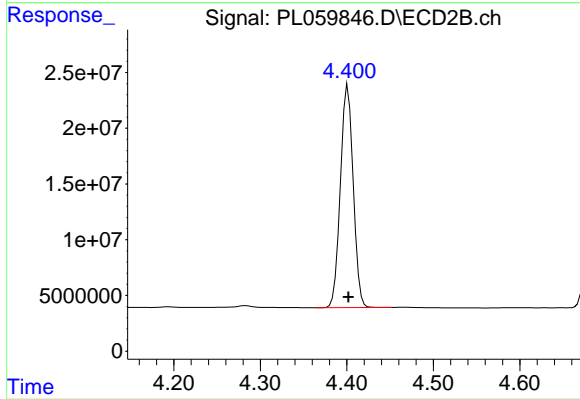
#1 Tetrachloro-m-xylene

R.T.: 4.012 min
 Delta R.T.: 0.000 min
 Response: 136281477
 Conc: 51.42 ng/ml



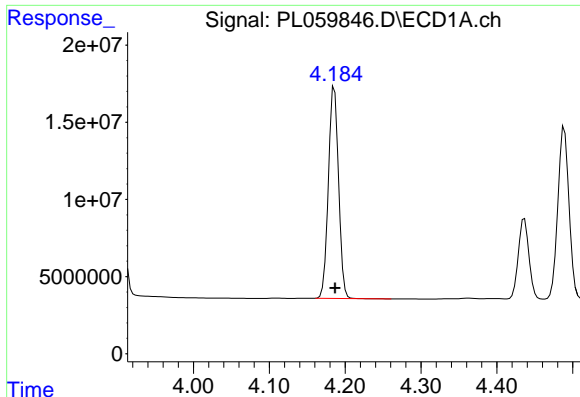
#2 alpha-BHC

R.T.: 3.902 min
 Delta R.T.: 0.000 min
 Response: 147445428
 Conc: 51.30 ng/ml



#2 alpha-BHC

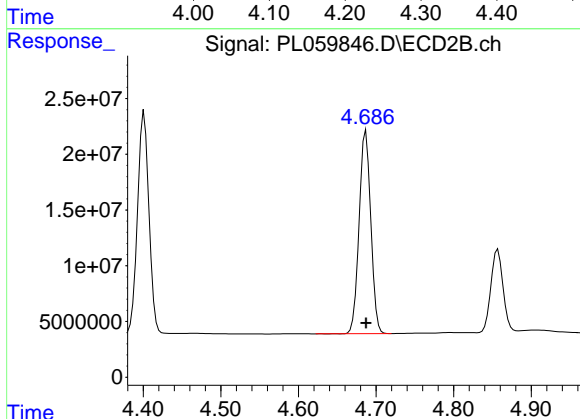
R.T.: 4.401 min
 Delta R.T.: 0.000 min
 Response: 203864819
 Conc: 52.81 ng/ml



#3 gamma-BHC (Lindane)

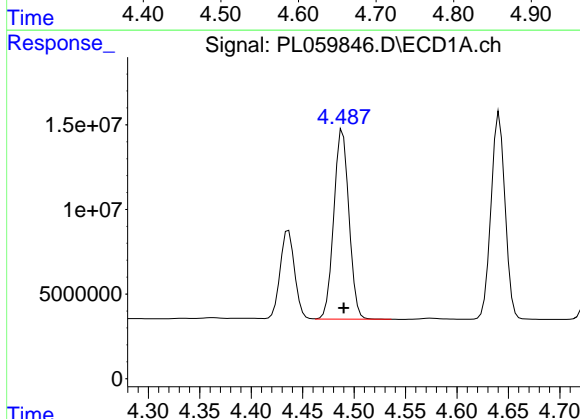
R.T.: 4.186 min
Delta R.T.: 0.000 min
Response: 127876346
Conc: 51.78 ng/ml

Instrument :
ECD_L
ClientSampleId :
PSTDCCC050



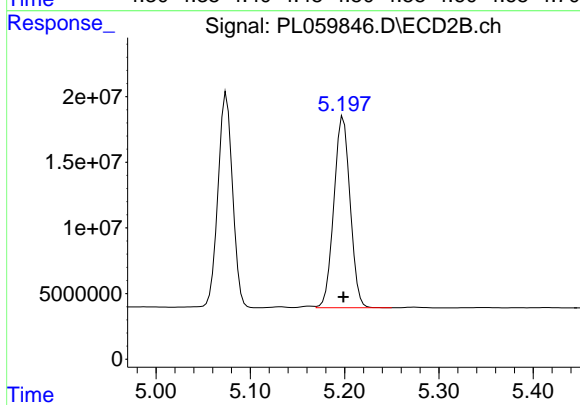
#3 gamma-BHC (Lindane)

R.T.: 4.687 min
Delta R.T.: 0.000 min
Response: 190161785
Conc: 52.43 ng/ml



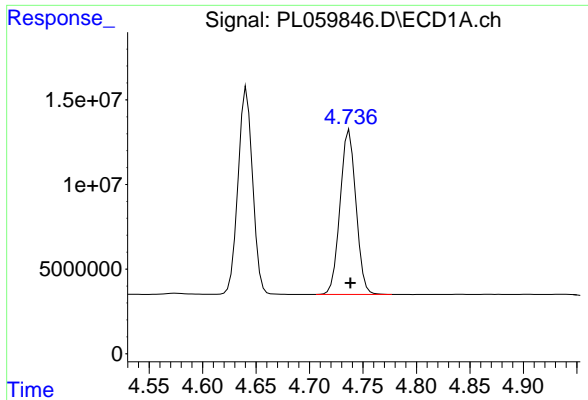
#4 Heptachlor

R.T.: 4.489 min
Delta R.T.: 0.000 min
Response: 114781048
Conc: 51.18 ng/ml



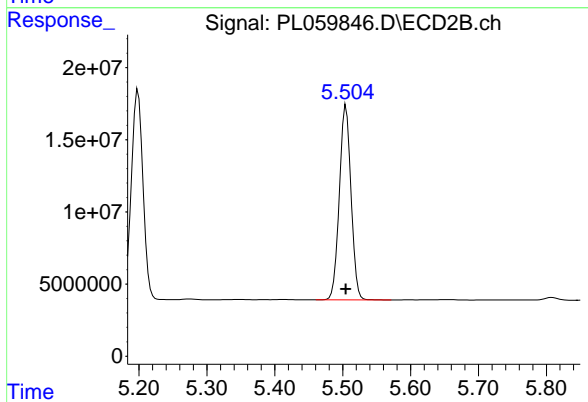
#4 Heptachlor

R.T.: 5.199 min
Delta R.T.: 0.000 min
Response: 174385471
Conc: 51.84 ng/ml

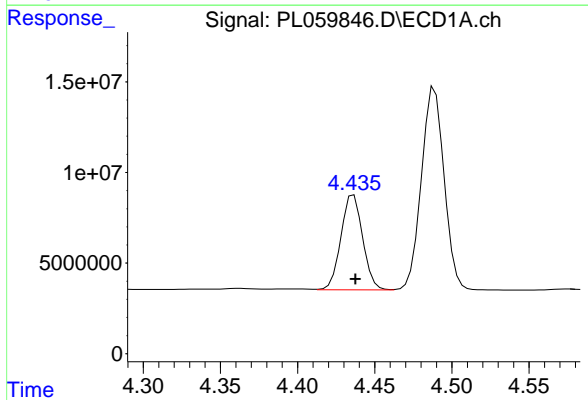


#5 Aldrin
 R.T.: 4.737 min
 Delta R.T.: -0.001 min
 Response: 100443982
 Conc: 50.90 ng/ml

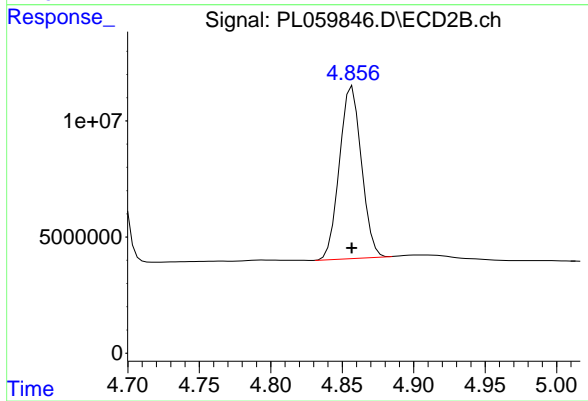
Instrument :
 ECD_L
 ClientSampleId :
 PSTDCCC050



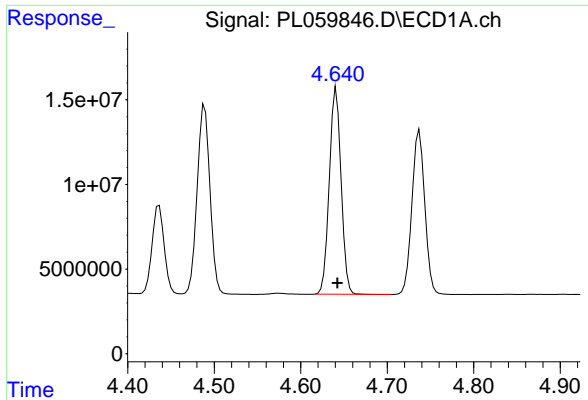
#5 Aldrin
 R.T.: 5.505 min
 Delta R.T.: 0.000 min
 Response: 161441804
 Conc: 51.83 ng/ml



#6 beta-BHC
 R.T.: 4.436 min
 Delta R.T.: 0.000 min
 Response: 51155300
 Conc: 50.09 ng/ml



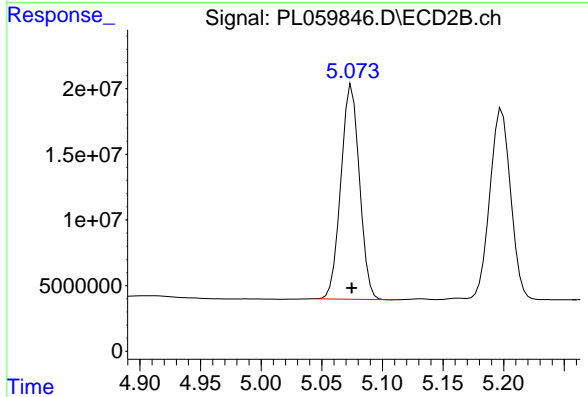
#6 beta-BHC
 R.T.: 4.857 min
 Delta R.T.: 0.000 min
 Response: 79578995
 Conc: 52.64 ng/ml



#7 delta-BHC

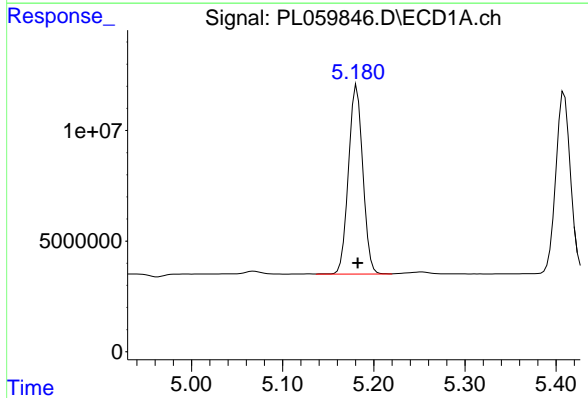
R.T.: 4.641 min
 Delta R.T.: 0.000 min
 Response: 115340026
 Conc: 51.88 ng/ml

Instrument :
 ECD_L
 ClientSampleId :
 PSTDCCC050



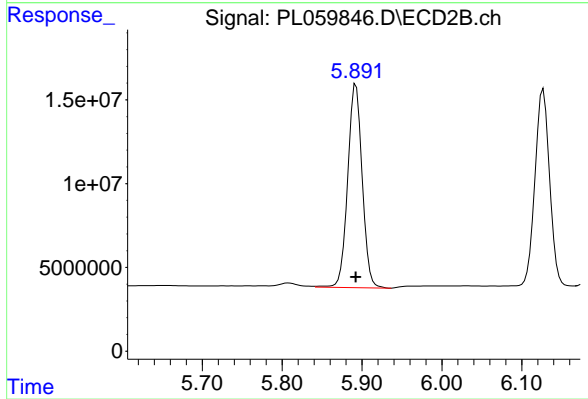
#7 delta-BHC

R.T.: 5.075 min
 Delta R.T.: 0.000 min
 Response: 174108822
 Conc: 55.88 ng/ml



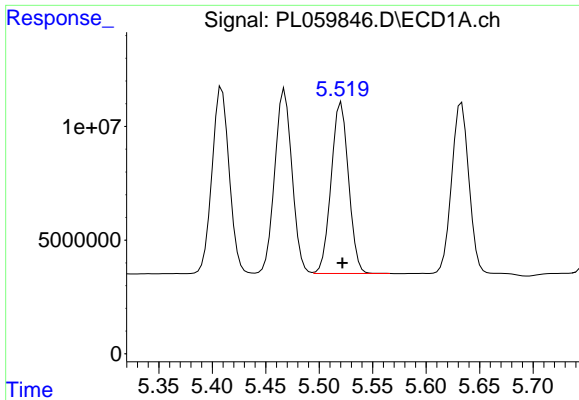
#8 Heptachlor epoxide

R.T.: 5.181 min
 Delta R.T.: -0.001 min
 Response: 93364813
 Conc: 50.87 ng/ml



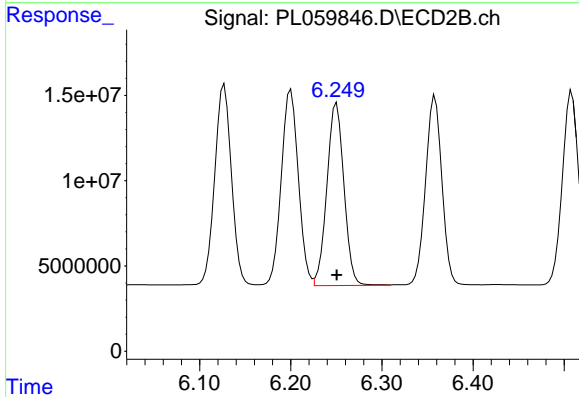
#8 Heptachlor epoxide

R.T.: 5.892 min
 Delta R.T.: 0.000 min
 Response: 153005096
 Conc: 56.81 ng/ml

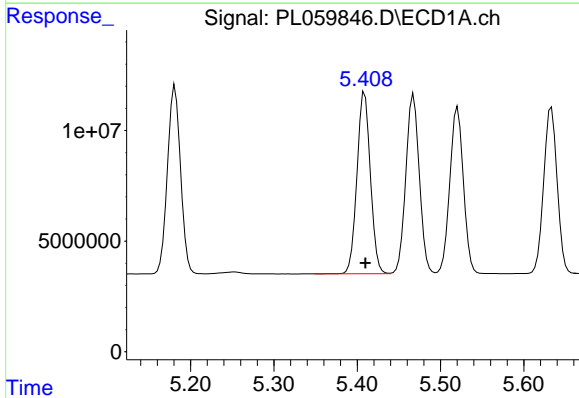


#9 Endosulfan I
R.T.: 5.521 min
Delta R.T.: 0.000 min
Response: 85341375
Conc: 50.73 ng/ml

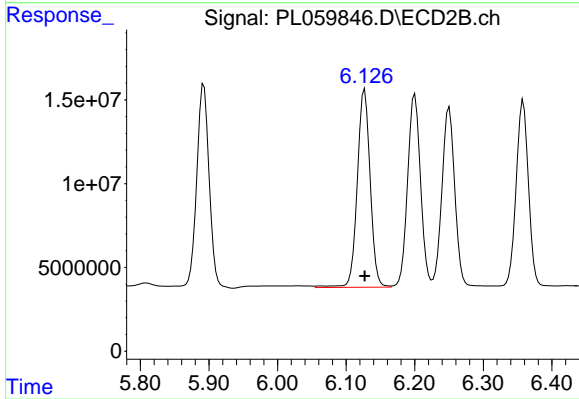
Instrument :
ECD_L
ClientSampleId :
PSTDCCC050



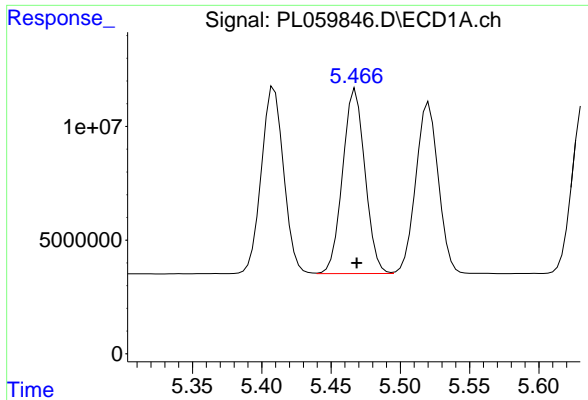
#9 Endosulfan I
R.T.: 6.250 min
Delta R.T.: 0.000 min
Response: 139167806
Conc: 52.18 ng/ml



#10 gamma-Chlordane
R.T.: 5.409 min
Delta R.T.: -0.001 min
Response: 91909403
Conc: 50.66 ng/ml



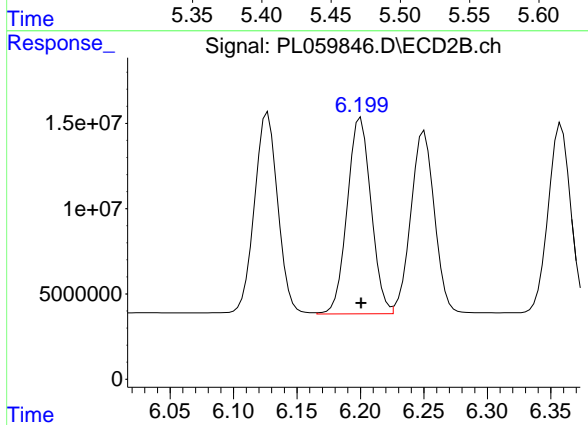
#10 gamma-Chlordane
R.T.: 6.127 min
Delta R.T.: 0.000 min
Response: 154365131
Conc: 53.91 ng/ml



#11 alpha-Chlordane

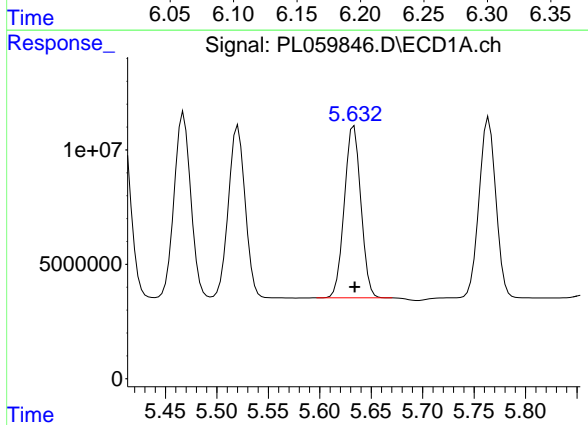
R.T.: 5.468 min
 Delta R.T.: 0.000 min
 Response: 91364872
 Conc: 50.67 ng/ml

Instrument :
 ECD_L
 ClientSampled :
 PSTDCCC050



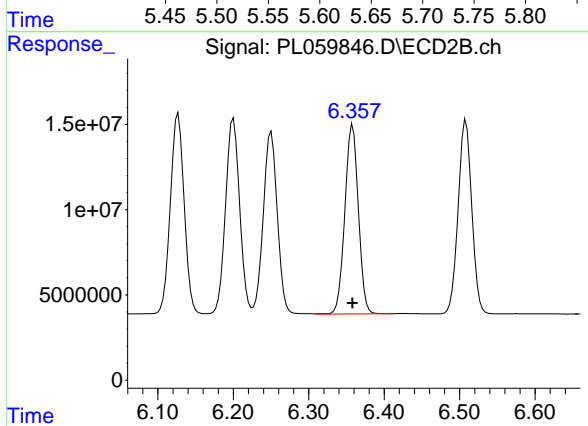
#11 alpha-Chlordane

R.T.: 6.200 min
 Delta R.T.: 0.000 min
 Response: 150412156
 Conc: 52.61 ng/ml



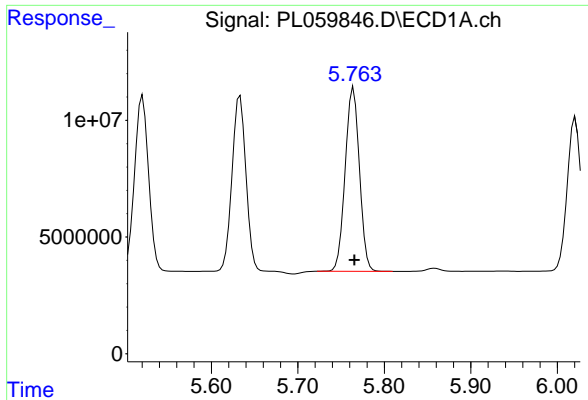
#12 4,4'-DDE

R.T.: 5.633 min
 Delta R.T.: 0.000 min
 Response: 84248785
 Conc: 50.59 ng/ml



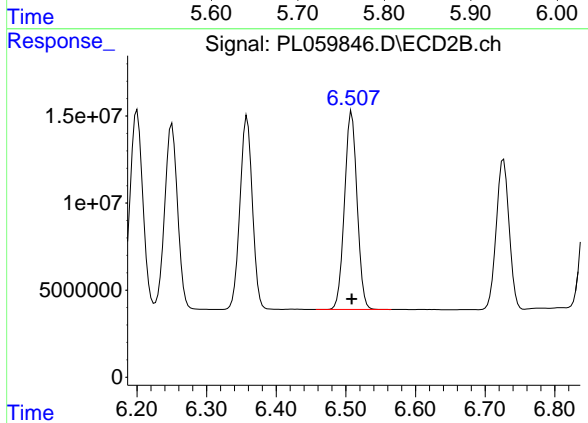
#12 4,4'-DDE

R.T.: 6.358 min
 Delta R.T.: 0.000 min
 Response: 138245383
 Conc: 51.65 ng/ml

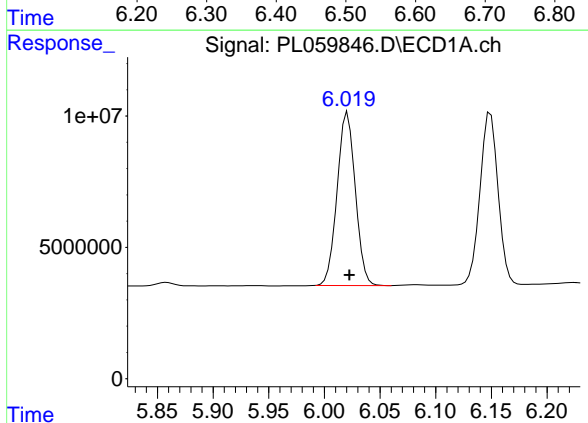


#13 Dieldrin
 R.T.: 5.764 min
 Delta R.T.: -0.001 min
 Response: 89626679
 Conc: 50.79 ng/ml

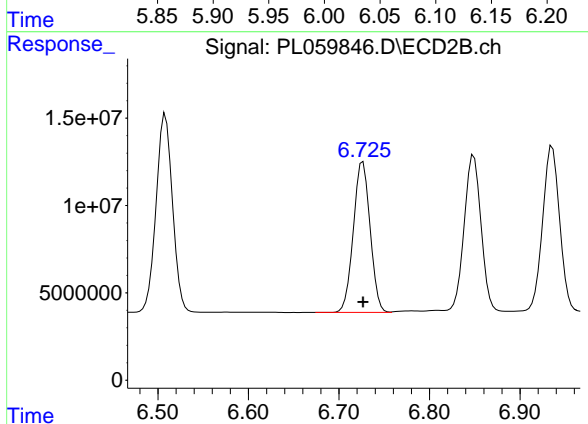
Instrument :
 ECD_L
 ClientSampleId :
 PSTDCCC050



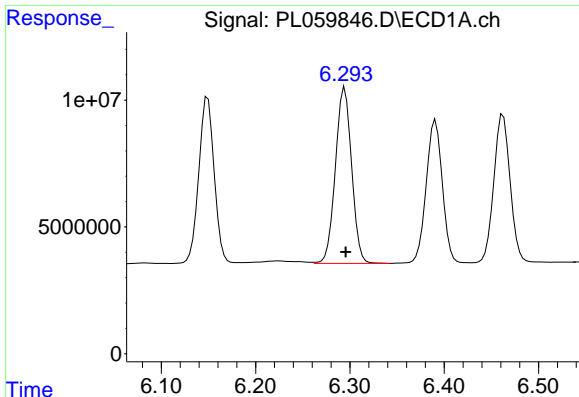
#13 Dieldrin
 R.T.: 6.508 min
 Delta R.T.: 0.000 min
 Response: 142851877
 Conc: 51.64 ng/ml



#14 Endrin
 R.T.: 6.021 min
 Delta R.T.: -0.002 min
 Response: 75057524
 Conc: 51.57 ng/ml



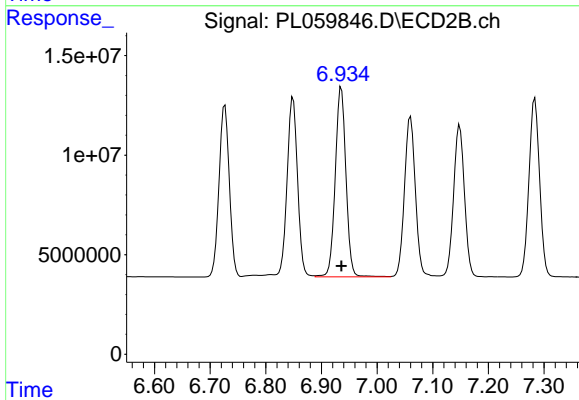
#14 Endrin
 R.T.: 6.726 min
 Delta R.T.: 0.000 min
 Response: 111042672
 Conc: 52.18 ng/ml



#15 Endosulfan II

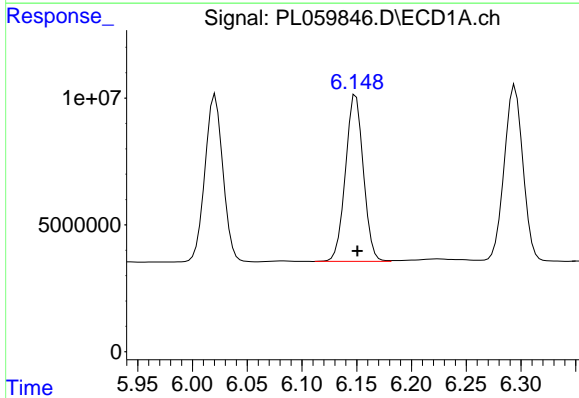
R.T.: 6.295 min
 Delta R.T.: -0.001 min
 Response: 82832765
 Conc: 49.60 ng/ml

Instrument :
 ECD_L
 ClientSampleId :
 PSTDCCC050



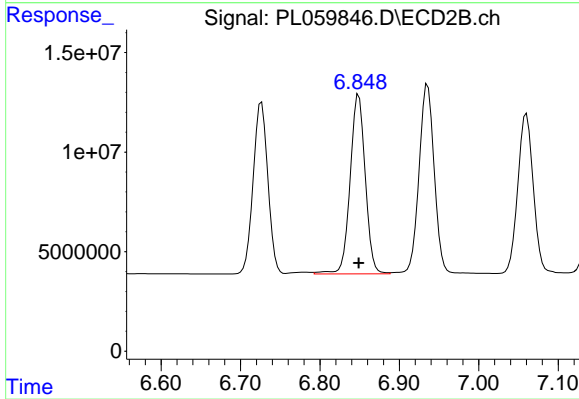
#15 Endosulfan II

R.T.: 6.936 min
 Delta R.T.: 0.000 min
 Response: 127574726
 Conc: 50.79 ng/ml



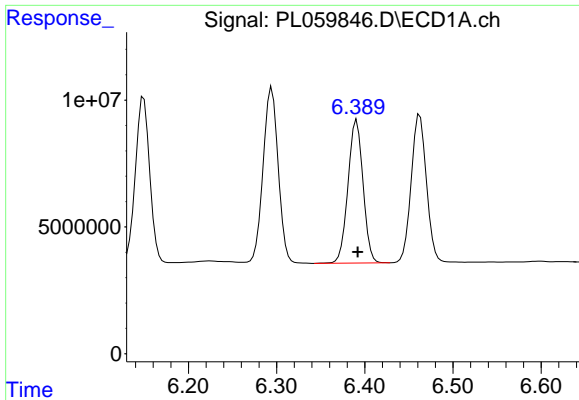
#16 4,4'-DDD

R.T.: 6.149 min
 Delta R.T.: -0.001 min
 Response: 74683873
 Conc: 48.92 ng/ml



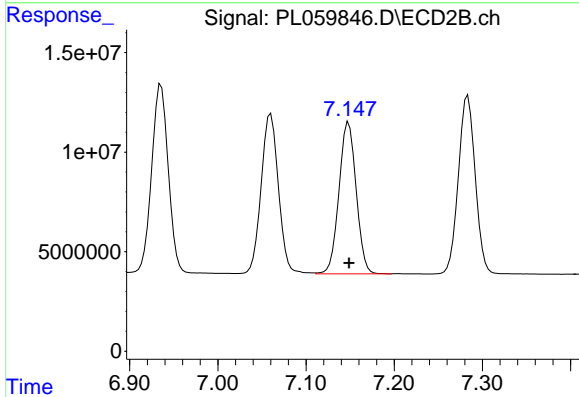
#16 4,4'-DDD

R.T.: 6.849 min
 Delta R.T.: 0.000 min
 Response: 119465589
 Conc: 52.04 ng/ml

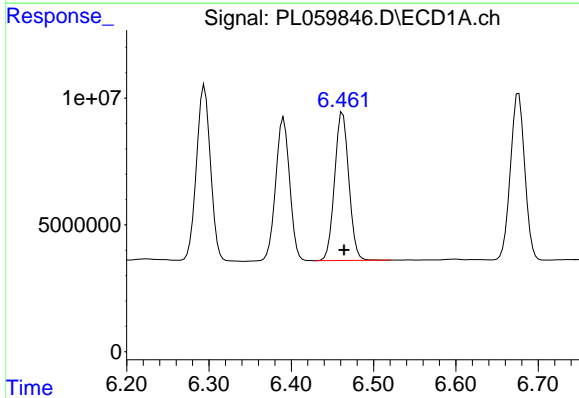


#17 4,4'-DDT
 R.T.: 6.391 min
 Delta R.T.: -0.001 min
 Response: 66926065
 Conc: 51.47 ng/ml

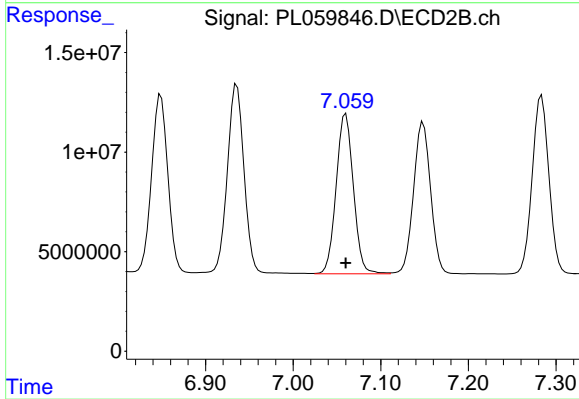
Instrument :
 ECD_L
ClientSampleId :
 PSTDCCC050



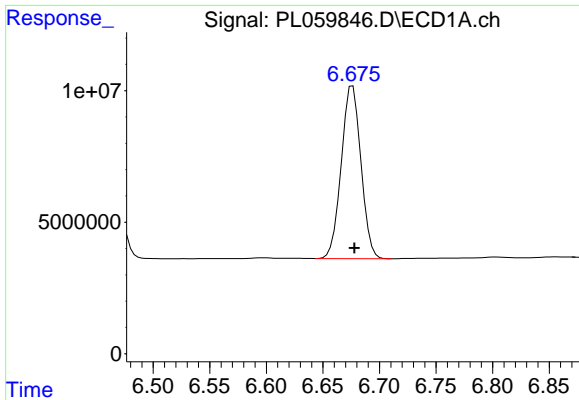
#17 4,4'-DDT
 R.T.: 7.148 min
 Delta R.T.: 0.000 min
 Response: 103306610
 Conc: 52.47 ng/ml



#18 Endrin aldehyde
 R.T.: 6.462 min
 Delta R.T.: -0.002 min
 Response: 70275341
 Conc: 49.26 ng/ml



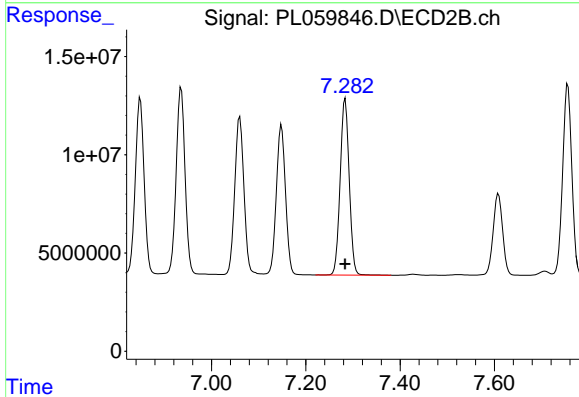
#18 Endrin aldehyde
 R.T.: 7.060 min
 Delta R.T.: 0.000 min
 Response: 109863092
 Conc: 50.59 ng/ml



#19 Endosulfan Sulfate

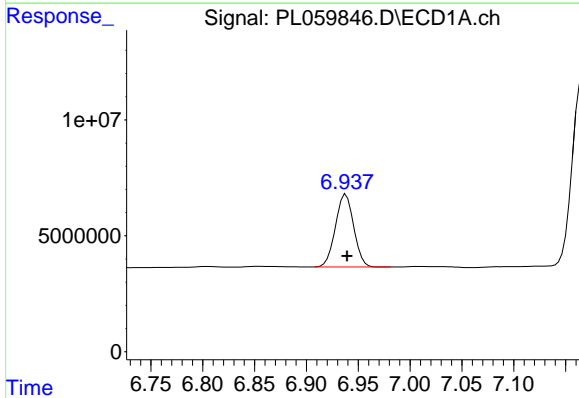
R.T.: 6.676 min
 Delta R.T.: -0.002 min
 Response: 79424362
 Conc: 48.32 ng/ml

Instrument :
 ECD_L
 ClientSampleId :
 PSTDCCC050



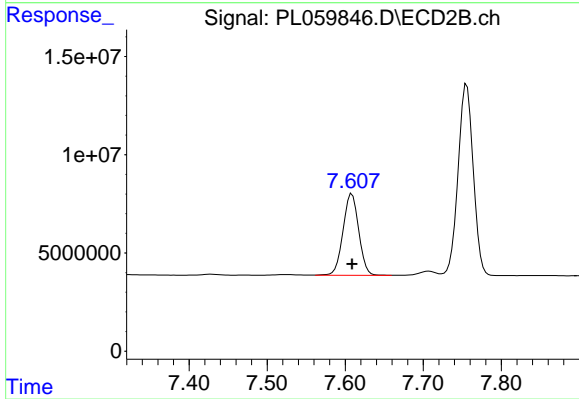
#19 Endosulfan Sulfate

R.T.: 7.284 min
 Delta R.T.: 0.000 min
 Response: 119484571
 Conc: 51.09 ng/ml



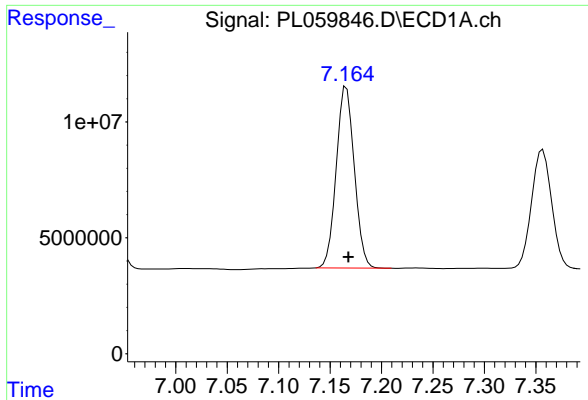
#20 Methoxychlor

R.T.: 6.938 min
 Delta R.T.: -0.001 min
 Response: 38439307
 Conc: 51.39 ng/ml



#20 Methoxychlor

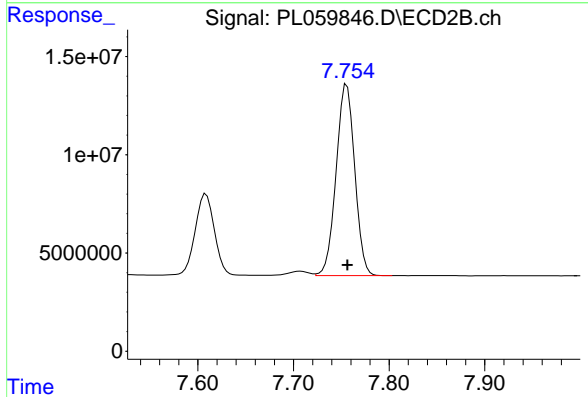
R.T.: 7.609 min
 Delta R.T.: 0.000 min
 Response: 58150403
 Conc: 51.22 ng/ml



#21 Endrin ketone

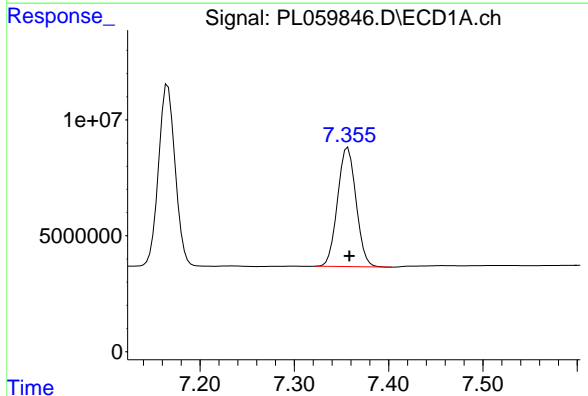
R.T.: 7.166 min
 Delta R.T.: -0.002 min
 Response: 95605445
 Conc: 50.94 ng/ml

Instrument :
 ECD_L
 ClientSampleId :
 PSTDCCC050



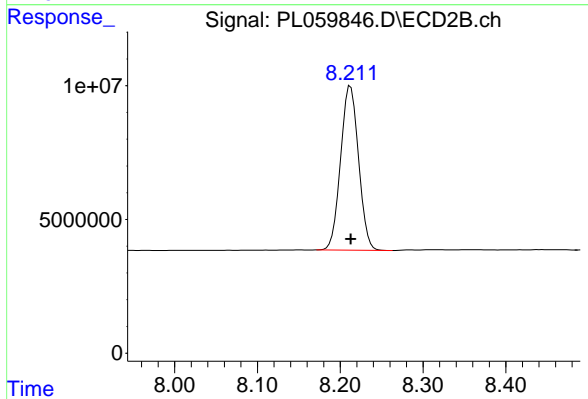
#21 Endrin ketone

R.T.: 7.756 min
 Delta R.T.: 0.000 min
 Response: 131759402
 Conc: 51.02 ng/ml



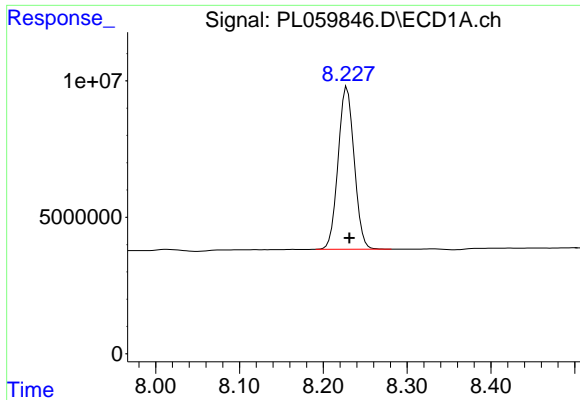
#22 Mirex

R.T.: 7.357 min
 Delta R.T.: -0.002 min
 Response: 70121313
 Conc: 49.29 ng/ml



#22 Mirex

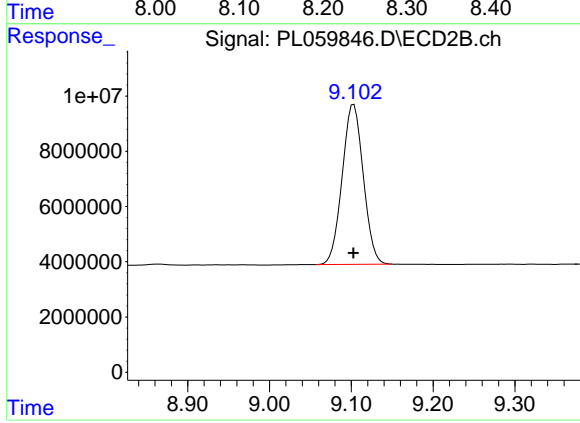
R.T.: 8.212 min
 Delta R.T.: 0.000 min
 Response: 92518970
 Conc: 50.06 ng/ml



#28 Decachlorobiphenyl

R.T.: 8.228 min
Delta R.T.: -0.003 min
Response: 79199522
Conc: 48.14 ng/ml

Instrument :
ECD_L
ClientSampleId :
PSTDCCC050



#28 Decachlorobiphenyl

R.T.: 9.103 min
Delta R.T.: 0.000 min
Response: 103482789
Conc: 49.48 ng/ml