

Data Path : Z:\pestpcbsrv\HPCHEM1\ECD_L\Data\PL071320\
 Data File : PL059859.D
 Signal(s) : Signal #1: ECD1A.ch Signal #2: ECD2B.ch
 Acq On : 13 Jul 2020 17:01
 Operator : DD\AJ
 Sample : PB130131BS
 Misc :
 ALS Vial : 23 Sample Multiplier: 1

Instrument :
 ECD_L
ClientSampled :
 PB130131BS

Manual Integrations
APPROVED
 Ankita
 7/14/2020 11:09:50 AM

Integration File signal 1: autoint1.e
 Integration File signal 2: autoint2.e
 Quant Time: Jul 14 06:27:53 2020
 Quant Method : Z:\pestpcbsrv\HPCHEM1\ECD_L\methods\PL071020.M
 Quant Title : GC Extractables
 QLast Update : Fri Jul 10 18:52:06 2020
 Response via : Initial Calibration
 Integrator: ChemStation

Volume Inj. : 1 µl
 Signal #1 Phase : ZB-MR2 Signal #2 Phase: ZB-MR1
 Signal #1 Info : 30M x 0.32mm x0.2 Signal #2 Info : 30M x 0.32mm x0.5µm

Compound	RT#1	RT#2	Resp#1	Resp#2	ng/ml	ng/ml

System Monitoring Compounds						
1) SA Tetrachlo...	3.465	4.012	39224354	54501232	20.279	20.565
28) SA Decachlor...	8.229	9.103	33863297	44607345	20.584	21.329
Target Compounds						
2) A alpha-BHC	3.903	4.402	26767915	36283401	9.313	9.398
3) MA gamma-BHC...	4.186	4.687	23273779	34327423	9.424	9.465
4) MA Heptachlor	4.490	5.198	22029852	34363531	9.823	10.215
5) MB Aldrin	4.738	5.505	19100702	31389641	9.680	10.078
6) B beta-BHC	4.437	4.857	10931124	15900104	10.704	10.517
7) B delta-BHC	4.642	5.074	19095037	25382110	8.590	8.147
8) B Heptachlo...	5.182	5.892	18287010	27759129	9.963	10.307
9) A Endosulfan I	5.520	6.250	16798792	27666222	9.986	10.372
10) B gamma-Chl...	5.409	6.127	17715312	28415709	9.765	9.923
11) B alpha-Chl...	5.468	6.200	17822743	29601456	9.883	10.353
12) B 4,4'-DDE	5.633	6.357	15872249	26491262	9.531	9.897
13) MA Dieldrin	5.764	6.508	17081307	28101677	9.680	10.159
14) MA Endrin	6.021	6.725	15590316	22135467	10.711	10.402m
15) B Endosulfa...	6.295	6.936	17115737	27006379	10.248	10.753
16) A 4,4'-DDD	6.149	6.849	14801788	24505143	9.696	10.675
17) MA 4,4'-DDT	6.391	7.149	11808820	19306444	9.082	9.805
18) B Endrin al...	6.463	7.059	14641334	22295546	10.263	10.266m
19) B Endosulfa...	6.676	7.284	16577191	24544481	10.085	10.494
20) A Methoxychlor	6.938	7.609	7494969	11702774	10.020	10.309
21) B Endrin ke...	7.167	7.756	18783007	26747840	10.008	10.357
22) Mirex	7.357	8.212	14990050	19421564	10.537	10.508

(f)=RT Delta > 1/2 Window (#)=Amounts differ by > 25% (m)=manual int.

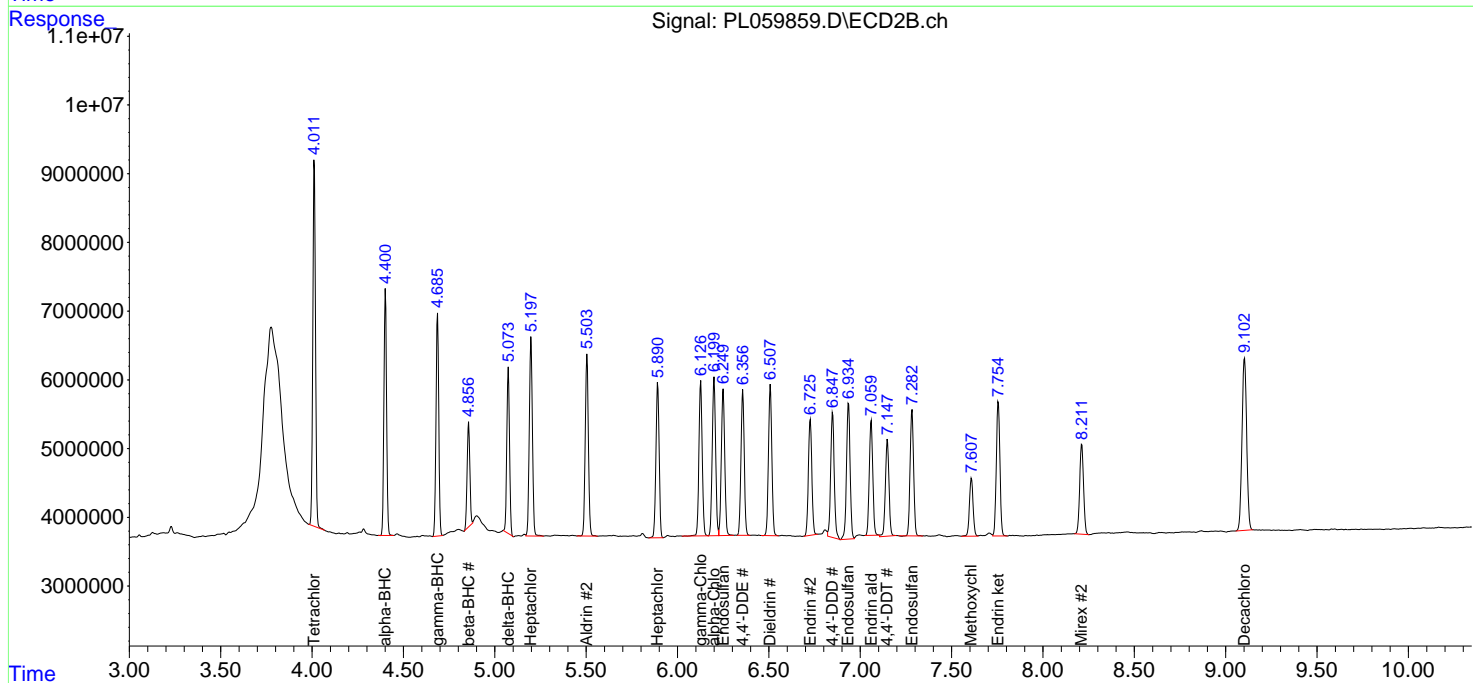
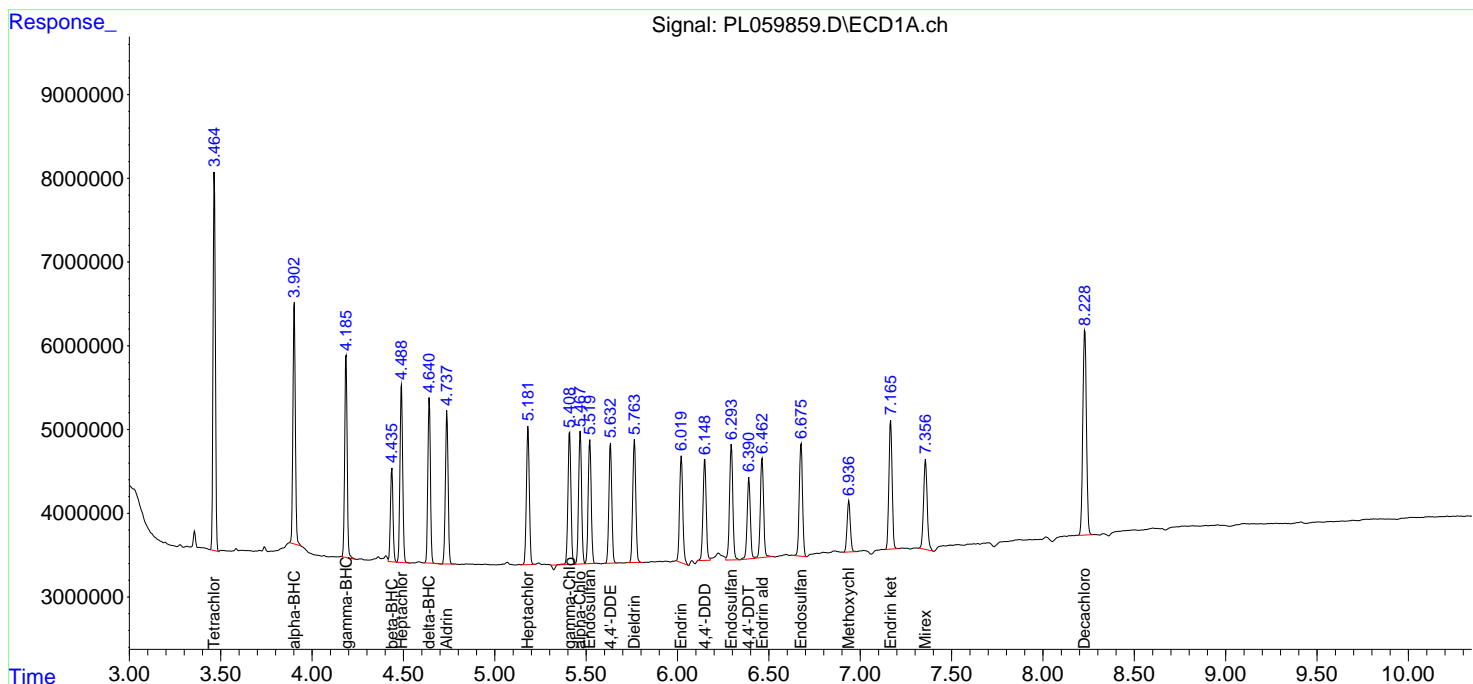
Data Path : Z:\pestpcbsrv\HPCHEM1\ECD_L\Data\PL071320\
 Data File : PL059859.D
 Signal(s) : Signal #1: ECD1A.ch Signal #2: ECD2B.ch
 Acq On : 13 Jul 2020 17:01
 Operator : DD\AJ
 Sample : PB130131BS
 Misc :
 ALS Vial : 23 Sample Multiplier: 1

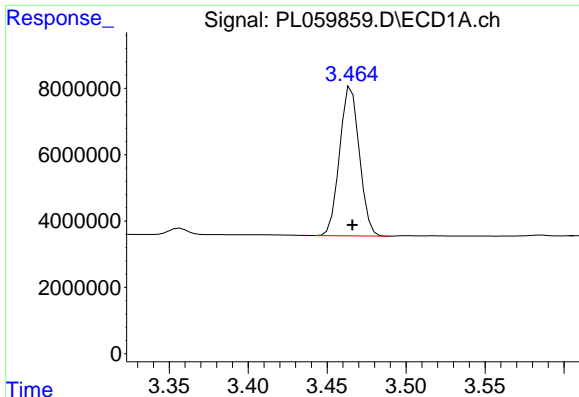
Instrument :
 ECD_L
Client Sampled :
 PB130131BS

Manual Integrations
APPROVED
 Ankita
 7/14/2020 11:09:50 AM

Integration File signal 1: autoint1.e
 Integration File signal 2: autoint2.e
 Quant Time: Jul 14 06:27:53 2020
 Quant Method : Z:\pestpcbsrv\HPCHEM1\ECD_L\methods\PL071020.M
 Quant Title : GC Extractables
 QLast Update : Fri Jul 10 18:52:06 2020
 Response via : Initial Calibration
 Integrator: ChemStation

Volume Inj. : 1 µl
 Signal #1 Phase : ZB-MR2 Signal #2 Phase: ZB-MR1
 Signal #1 Info : 30M x 0.32mm x0.2 Signal #2 Info : 30M x 0.32mm x0.5µm





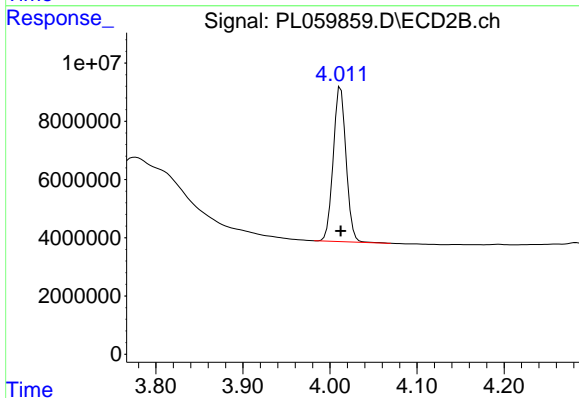
#1 Tetrachloro-m-xylene

R.T.: 3.465 min
 Delta R.T.: 0.000 min
 Response: 39224354
 Conc: 20.28 ng/ml

Instrument :
 ECD_L
 ClientSampled :
 PB130131BS

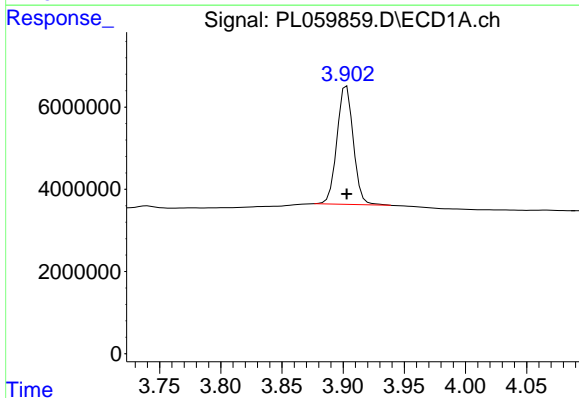
Manual Integrations
 APPROVED

Ankita
 7/14/2020 11:09:50 AM



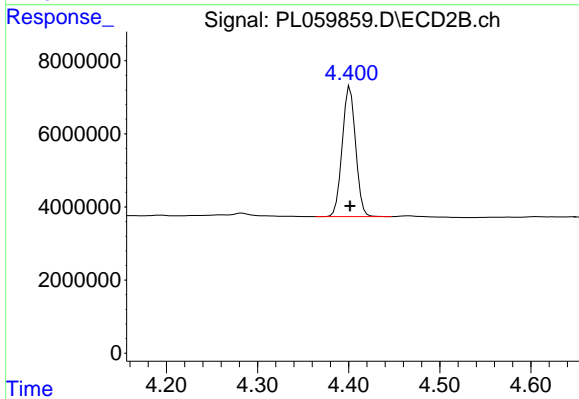
#1 Tetrachloro-m-xylene

R.T.: 4.012 min
 Delta R.T.: 0.000 min
 Response: 54501232
 Conc: 20.56 ng/ml



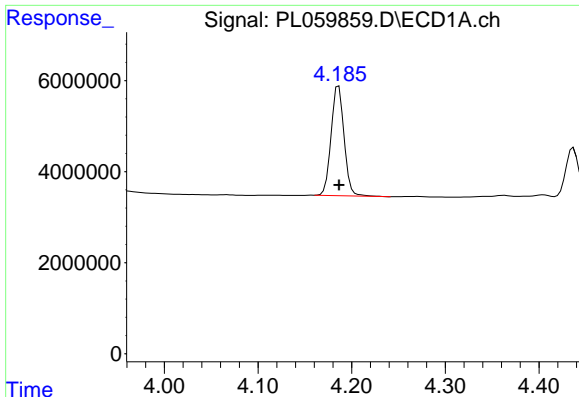
#2 alpha-BHC

R.T.: 3.903 min
 Delta R.T.: 0.000 min
 Response: 26767915
 Conc: 9.31 ng/ml



#2 alpha-BHC

R.T.: 4.402 min
 Delta R.T.: 0.000 min
 Response: 36283401
 Conc: 9.40 ng/ml

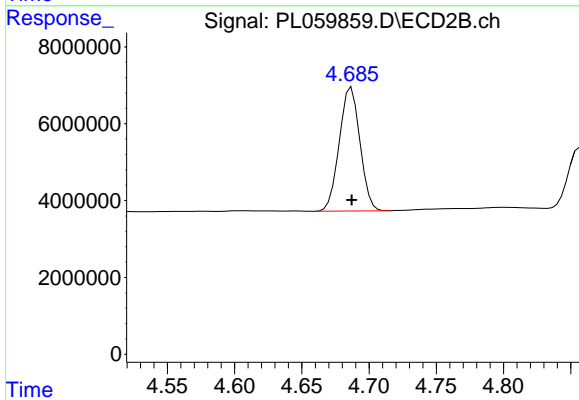


#3 gamma-BHC (Lindane)
 R.T.: 4.186 min
 Delta R.T.: 0.000 min
 Response: 23273779
 Conc: 9.42 ng/ml

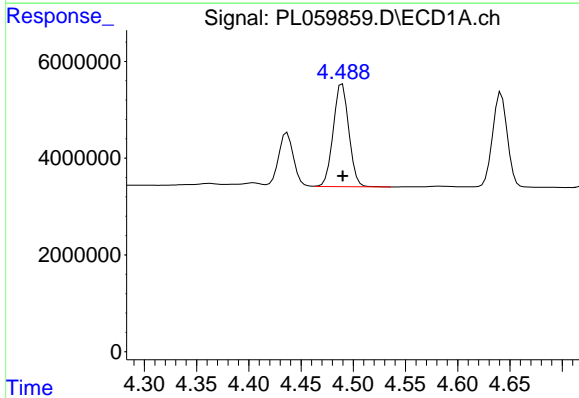
Instrument :
 ECD_L
 ClientSampled :
 PB130131BS

Manual Integrations
 APPROVED

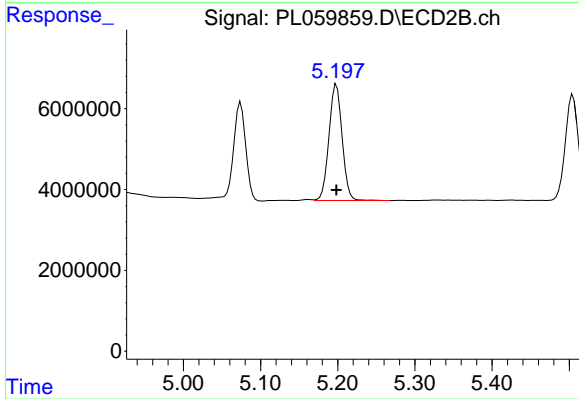
Ankita
 7/14/2020 11:09:50 AM



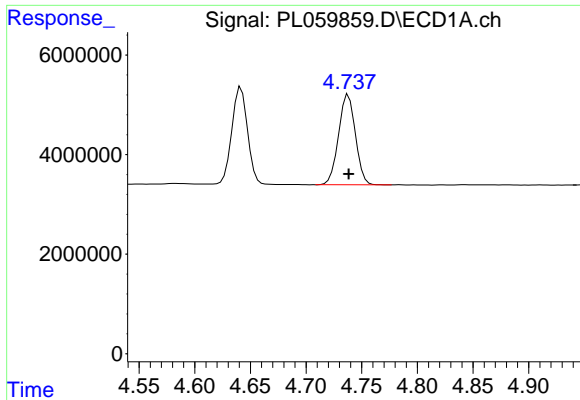
#3 gamma-BHC (Lindane)
 R.T.: 4.687 min
 Delta R.T.: 0.000 min
 Response: 34327423
 Conc: 9.46 ng/ml



#4 Heptachlor
 R.T.: 4.490 min
 Delta R.T.: 0.000 min
 Response: 22029852
 Conc: 9.82 ng/ml



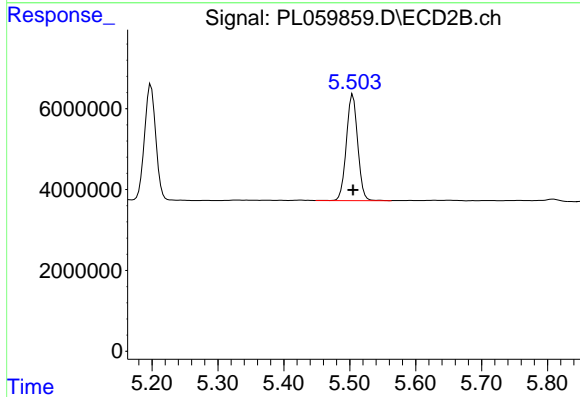
#4 Heptachlor
 R.T.: 5.198 min
 Delta R.T.: 0.000 min
 Response: 34363531
 Conc: 10.21 ng/ml



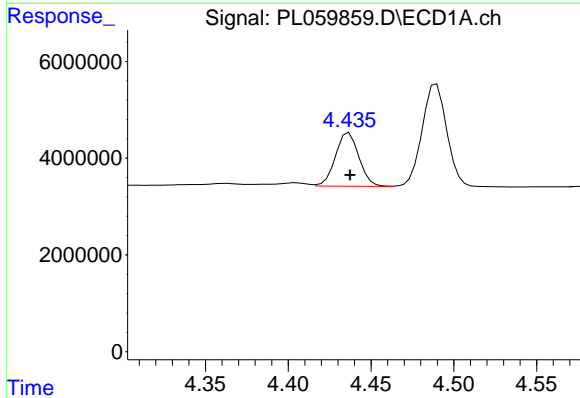
#5 Aldrin
 R.T.: 4.738 min
 Delta R.T.: 0.000 min
 Response: 19100702
 Conc: 9.68 ng/ml

Instrument :
 ECD_L
ClientSampled :
 PB130131BS

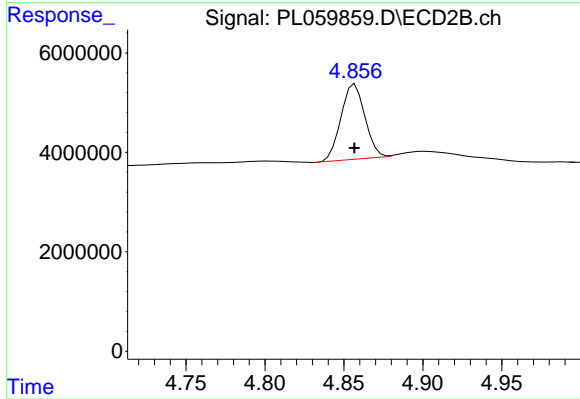
Manual Integrations
APPROVED
 Ankita
 7/14/2020 11:09:50 AM



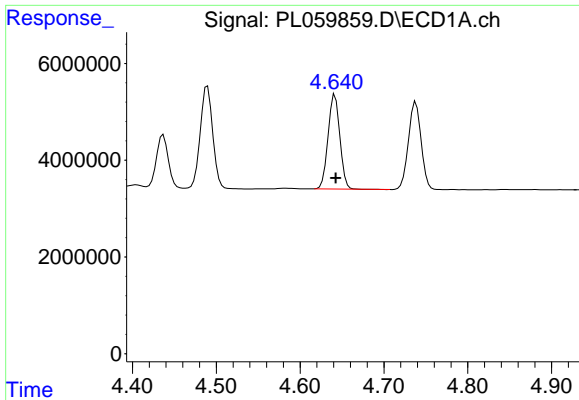
#5 Aldrin
 R.T.: 5.505 min
 Delta R.T.: 0.000 min
 Response: 31389641
 Conc: 10.08 ng/ml



#6 beta-BHC
 R.T.: 4.437 min
 Delta R.T.: 0.000 min
 Response: 10931124
 Conc: 10.70 ng/ml



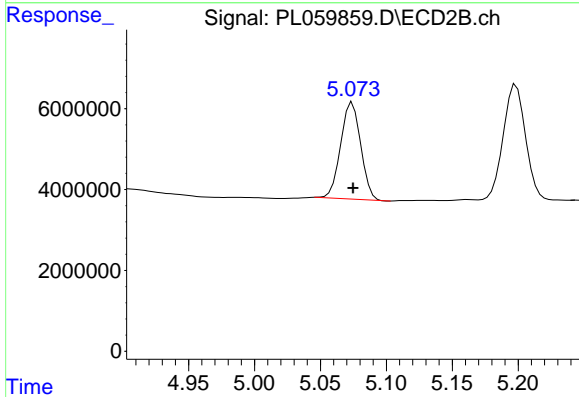
#6 beta-BHC
 R.T.: 4.857 min
 Delta R.T.: 0.000 min
 Response: 15900104
 Conc: 10.52 ng/ml



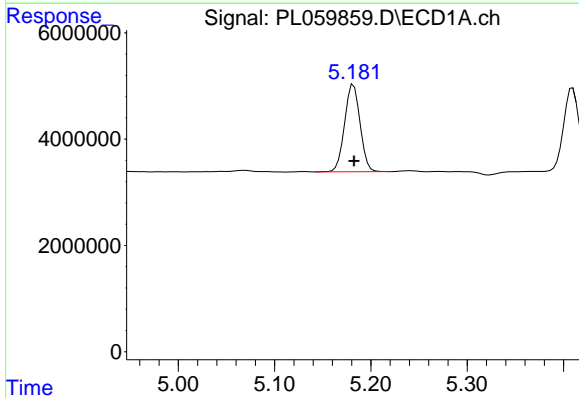
#7 delta-BHC
 R.T.: 4.642 min
 Delta R.T.: 0.000 min
 Response: 19095037
 Conc: 8.59 ng/ml

Instrument :
 ECD_L
ClientSampled :
 PB130131BS

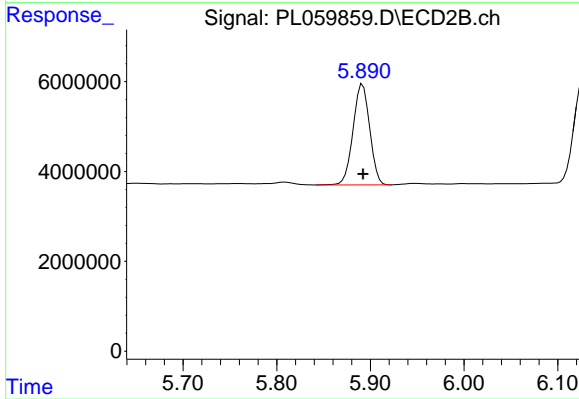
Manual Integrations
APPROVED
 Ankita
 7/14/2020 11:09:50 AM



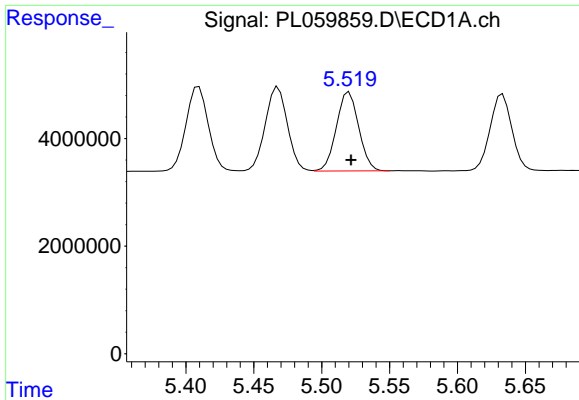
#7 delta-BHC
 R.T.: 5.074 min
 Delta R.T.: 0.000 min
 Response: 25382110
 Conc: 8.15 ng/ml



#8 Heptachlor epoxide
 R.T.: 5.182 min
 Delta R.T.: 0.000 min
 Response: 18287010
 Conc: 9.96 ng/ml



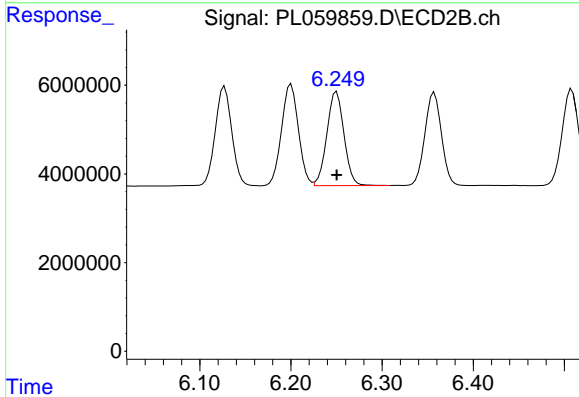
#8 Heptachlor epoxide
 R.T.: 5.892 min
 Delta R.T.: 0.000 min
 Response: 27759129
 Conc: 10.31 ng/ml



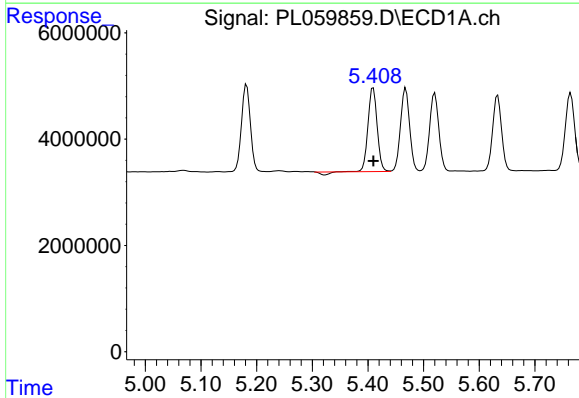
#9 Endosulfan I
 R.T.: 5.520 min
 Delta R.T.: -0.001 min
 Response: 16798792
 Conc: 9.99 ng/ml

Instrument :
 ECD_L
ClientSampled :
 PB130131BS

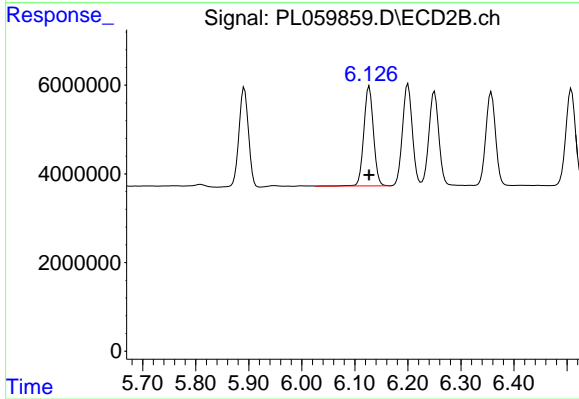
Manual Integrations
APPROVED
 Ankita
 7/14/2020 11:09:50 AM



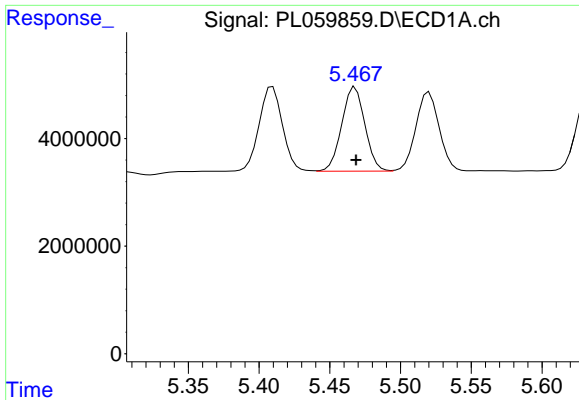
#9 Endosulfan I
 R.T.: 6.250 min
 Delta R.T.: 0.000 min
 Response: 27666222
 Conc: 10.37 ng/ml



#10 gamma-Chlordane
 R.T.: 5.409 min
 Delta R.T.: 0.000 min
 Response: 17715312
 Conc: 9.77 ng/ml



#10 gamma-Chlordane
 R.T.: 6.127 min
 Delta R.T.: 0.000 min
 Response: 28415709
 Conc: 9.92 ng/ml

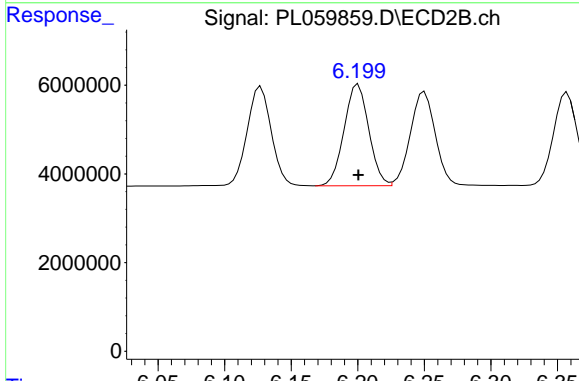


#11 alpha-Chlordane

R.T.: 5.468 min
 Delta R.T.: 0.000 min
 Response: 17822743
 Conc: 9.88 ng/ml

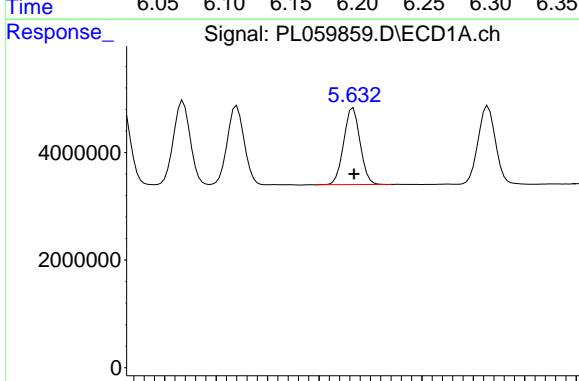
Instrument :
 ECD_L
ClientSampled :
 PB130131BS

Manual Integrations
APPROVED
 Ankita
 7/14/2020 11:09:50 AM



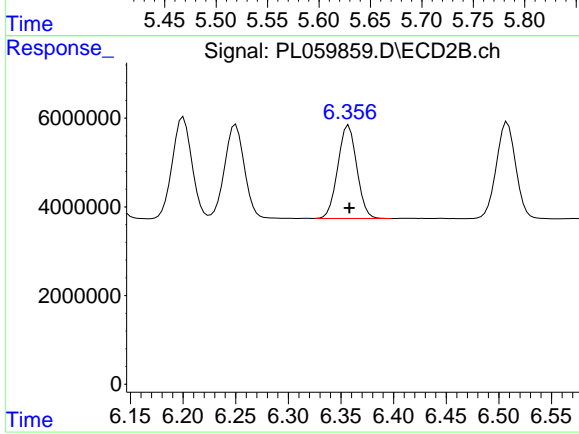
#11 alpha-Chlordane

R.T.: 6.200 min
 Delta R.T.: 0.000 min
 Response: 29601456
 Conc: 10.35 ng/ml



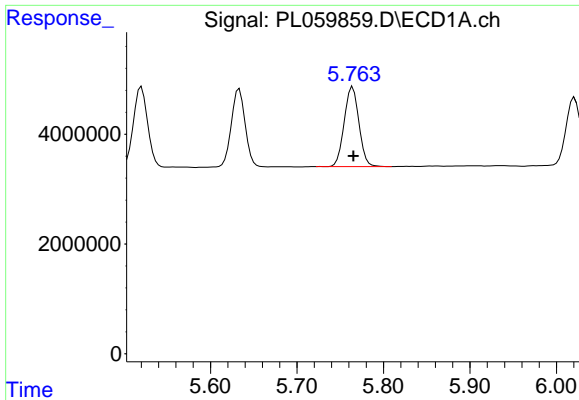
#12 4,4'-DDE

R.T.: 5.633 min
 Delta R.T.: 0.000 min
 Response: 15872249
 Conc: 9.53 ng/ml



#12 4,4'-DDE

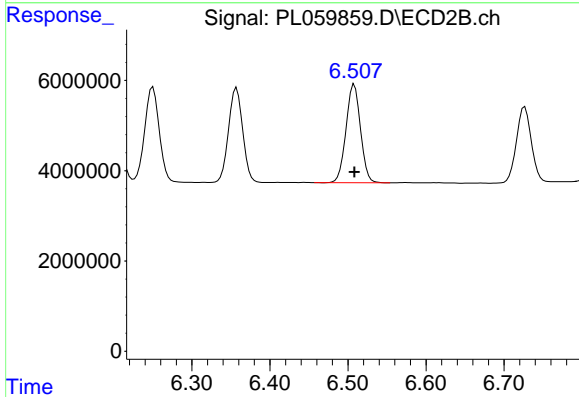
R.T.: 6.357 min
 Delta R.T.: 0.000 min
 Response: 26491262
 Conc: 9.90 ng/ml



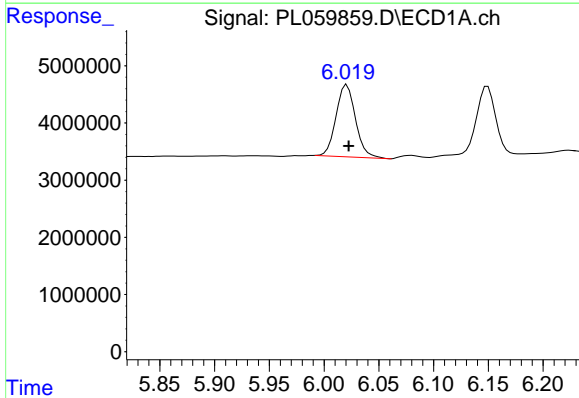
#13 Dieldrin
 R.T.: 5.764 min
 Delta R.T.: -0.001 min
 Response: 17081307
 Conc: 9.68 ng/ml

Instrument :
 ECD_L
 ClientSampled :
 PB130131BS

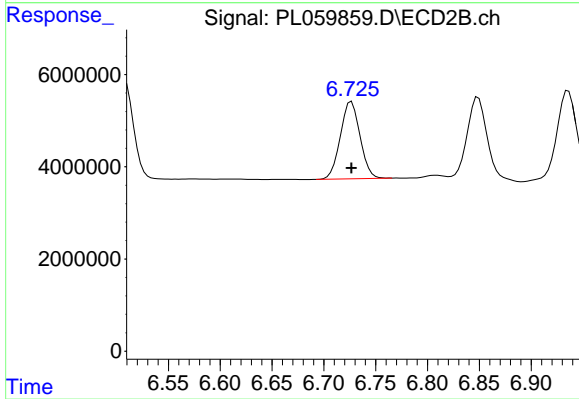
Manual Integrations
 APPROVED
 Ankita
 7/14/2020 11:09:50 AM



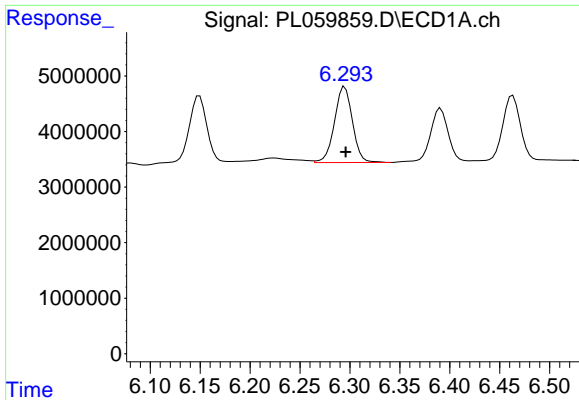
#13 Dieldrin
 R.T.: 6.508 min
 Delta R.T.: 0.000 min
 Response: 28101677
 Conc: 10.16 ng/ml



#14 Endrin
 R.T.: 6.021 min
 Delta R.T.: -0.002 min
 Response: 15590316
 Conc: 10.71 ng/ml



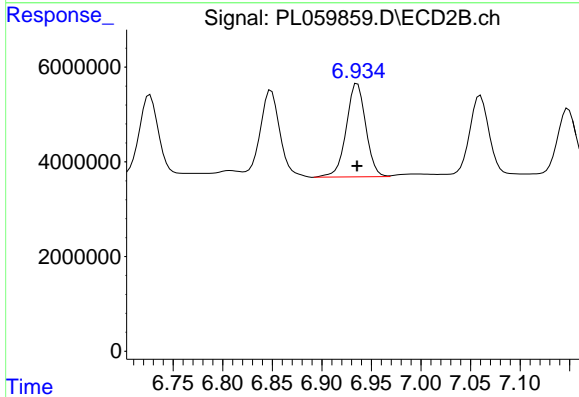
#14 Endrin
 R.T.: 6.725 min
 Delta R.T.: -0.001 min
 Response: 22135467
 Conc: 10.40 ng/ml m



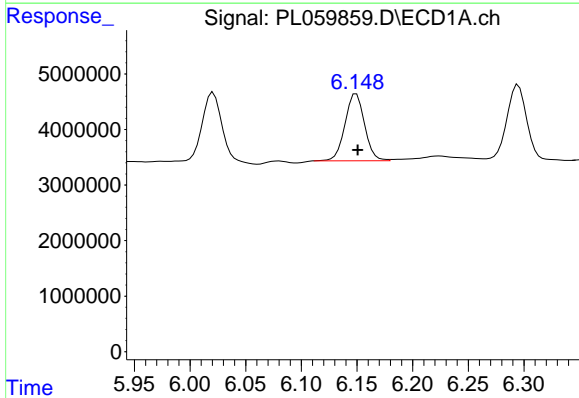
#15 Endosulfan II
 R.T.: 6.295 min
 Delta R.T.: 0.000 min
 Response: 17115737
 Conc: 10.25 ng/ml

Instrument :
 ECD_L
ClientSampled :
 PB130131BS

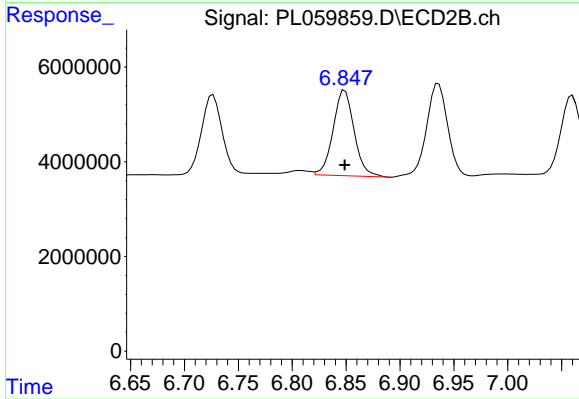
Manual Integrations
APPROVED
 Ankita
 7/14/2020 11:09:50 AM



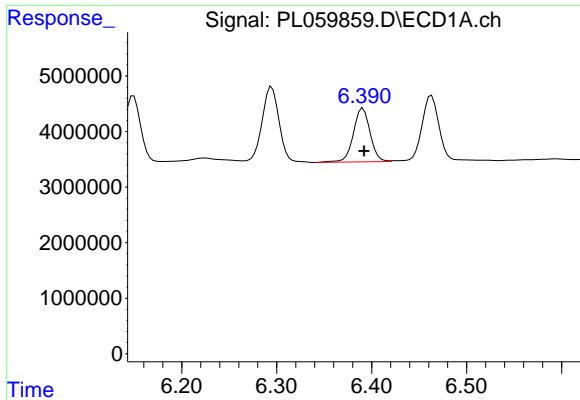
#15 Endosulfan II
 R.T.: 6.936 min
 Delta R.T.: 0.000 min
 Response: 27006379
 Conc: 10.75 ng/ml



#16 4,4'-DDD
 R.T.: 6.149 min
 Delta R.T.: -0.001 min
 Response: 14801788
 Conc: 9.70 ng/ml



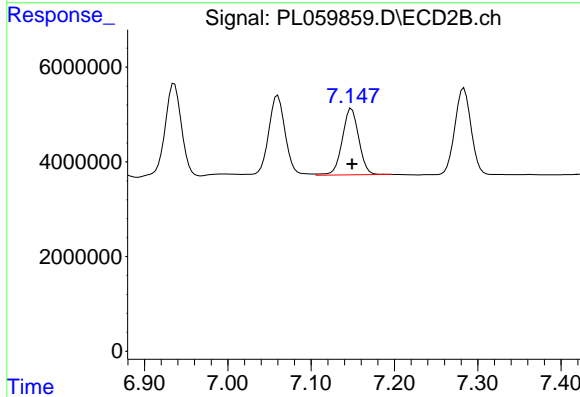
#16 4,4'-DDD
 R.T.: 6.849 min
 Delta R.T.: 0.000 min
 Response: 24505143
 Conc: 10.68 ng/ml



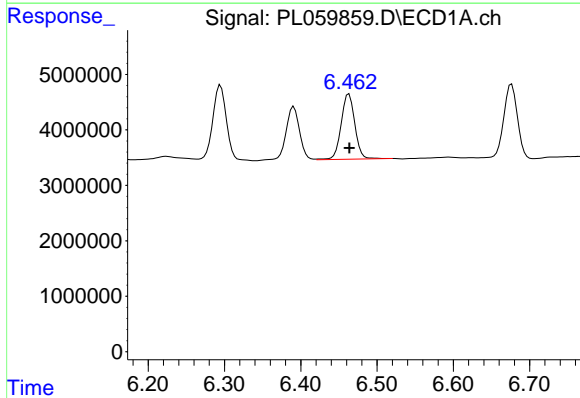
#17 4,4'-DDT
 R.T.: 6.391 min
 Delta R.T.: -0.001 min
 Response: 11808820
 Conc: 9.08 ng/ml

Instrument :
 ECD_L
ClientSampled :
 PB130131BS

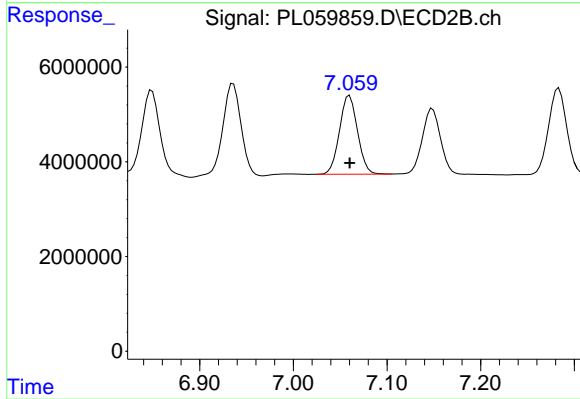
Manual Integrations
APPROVED
 Ankita
 7/14/2020 11:09:50 AM



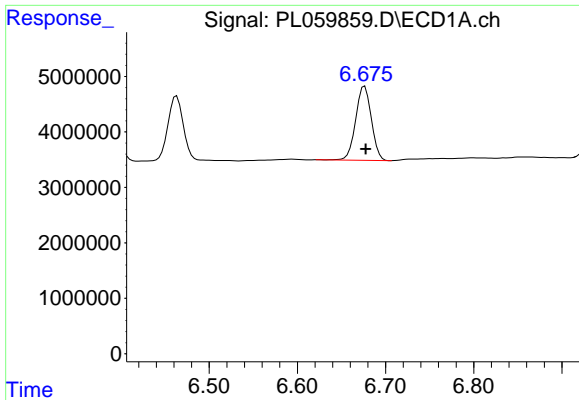
#17 4,4'-DDT
 R.T.: 7.149 min
 Delta R.T.: 0.000 min
 Response: 19306444
 Conc: 9.80 ng/ml



#18 Endrin aldehyde
 R.T.: 6.463 min
 Delta R.T.: 0.000 min
 Response: 14641334
 Conc: 10.26 ng/ml



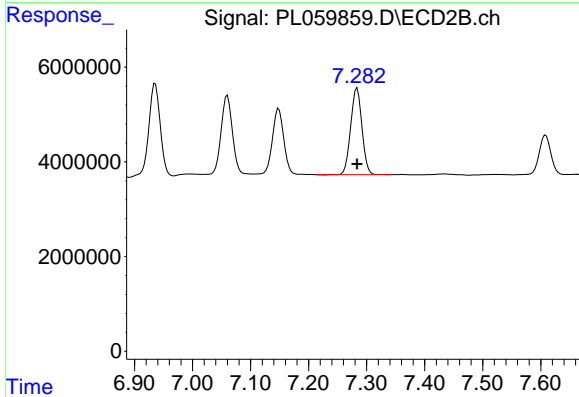
#18 Endrin aldehyde
 R.T.: 7.059 min
 Delta R.T.: -0.002 min
 Response: 22295546
 Conc: 10.27 ng/ml m



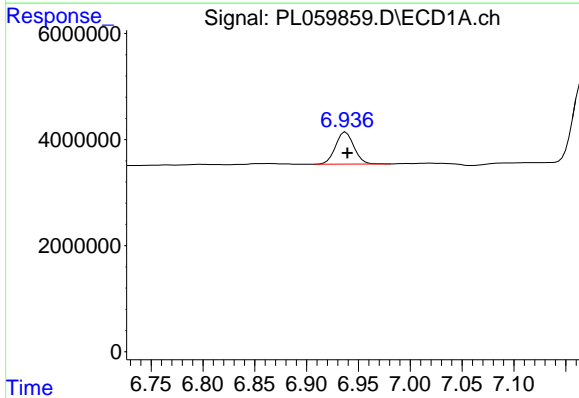
#19 Endosulfan Sulfate
 R.T.: 6.676 min
 Delta R.T.: -0.001 min
 Response: 16577191
 Conc: 10.08 ng/ml

Instrument :
 ECD_L
 ClientSampled :
 PB130131BS

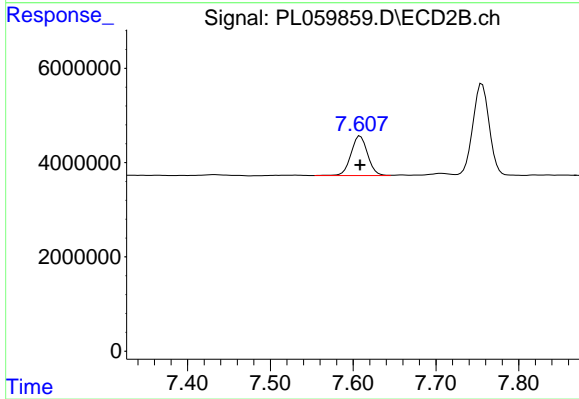
Manual Integrations
 APPROVED
 Ankita
 7/14/2020 11:09:50 AM



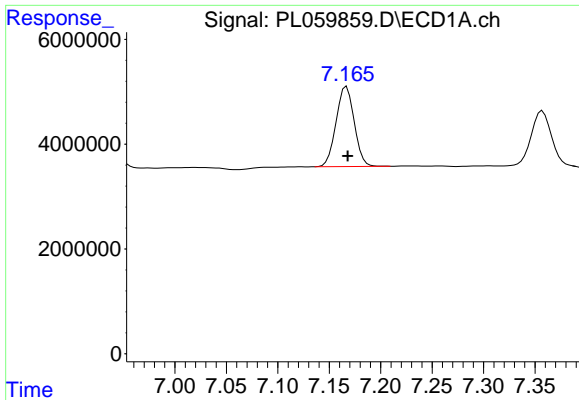
#19 Endosulfan Sulfate
 R.T.: 7.284 min
 Delta R.T.: 0.000 min
 Response: 24544481
 Conc: 10.49 ng/ml



#20 Methoxychlor
 R.T.: 6.938 min
 Delta R.T.: -0.001 min
 Response: 7494969
 Conc: 10.02 ng/ml



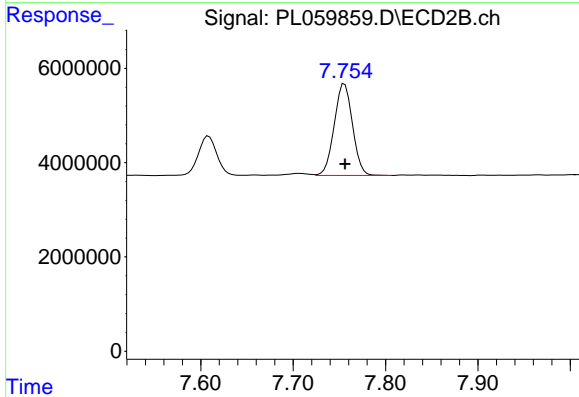
#20 Methoxychlor
 R.T.: 7.609 min
 Delta R.T.: 0.000 min
 Response: 11702774
 Conc: 10.31 ng/ml



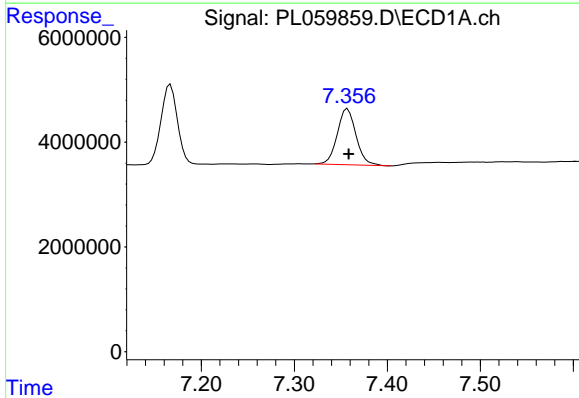
#21 Endrin ketone
 R.T.: 7.167 min
 Delta R.T.: -0.001 min
 Response: 18783007
 Conc: 10.01 ng/ml

Instrument :
 ECD_L
ClientSampled :
 PB130131BS

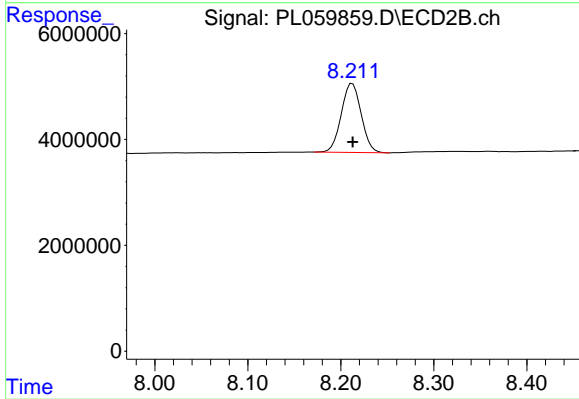
Manual Integrations
APPROVED
 Ankita
 7/14/2020 11:09:50 AM



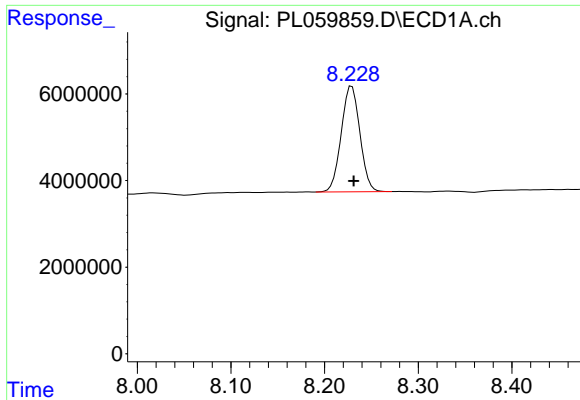
#21 Endrin ketone
 R.T.: 7.756 min
 Delta R.T.: 0.000 min
 Response: 26747840
 Conc: 10.36 ng/ml



#22 Mirex
 R.T.: 7.357 min
 Delta R.T.: -0.001 min
 Response: 14990050
 Conc: 10.54 ng/ml



#22 Mirex
 R.T.: 8.212 min
 Delta R.T.: 0.000 min
 Response: 19421564
 Conc: 10.51 ng/ml



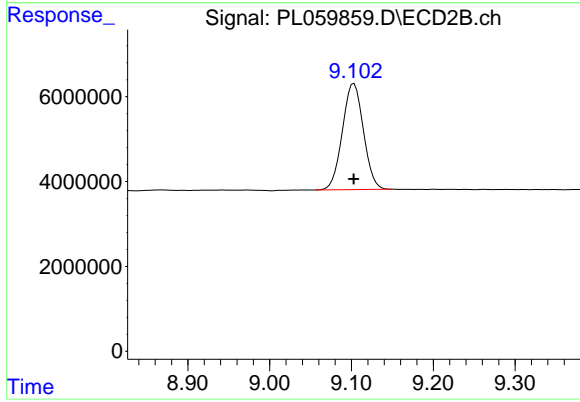
#28 Decachlorobiphenyl

R.T.: 8.229 min
Delta R.T.: -0.002 min
Response: 33863297
Conc: 20.58 ng/ml

Instrument :
ECD_L
ClientSampled :
PB130131BS

Manual Integrations
APPROVED

Ankita
7/14/2020 11:09:50 AM



#28 Decachlorobiphenyl

R.T.: 9.103 min
Delta R.T.: 0.000 min
Response: 44607345
Conc: 21.33 ng/ml