

Data Path : Z:\pestpcbsrv\HPCHEM1\ECD_L\Data\PL071521\
 Data File : PL068120.D
 Signal(s) : Signal #1: ECD1A.ch Signal #2: ECD2B.ch
 Acq On : 14 Jul 2021 17:25
 Operator : AR\AJ
 Sample : I.BLK
 Misc :
 ALS Vial : 2 Sample Multiplier: 1

Instrument :
 ECD_L
 ClientSampleId :
 I.BLK

Integration File signal 1: autoint1.e
 Integration File signal 2: autoint2.e
 Quant Time: Jul 15 04:46:41 2021
 Quant Method : Z:\pestpcbsrv\HPCHEM1\ECD_L\methods\PL071521.M
 Quant Title : GC Extractables
 QLast Update : Thu Jul 15 04:04:16 2021
 Response via : Initial Calibration
 Integrator: ChemStation

Volume Inj. : 1 µl
 Signal #1 Phase : ZB-MR2 Signal #2 Phase: ZB-MR1
 Signal #1 Info : 30M x 0.32mm x0.2 Signal #2 Info : 30M x 0.32mm x0.5µm

Compound	RT#1	RT#2	Resp#1	Resp#2	ng/ml	ng/ml

System Monitoring Compounds						
1) SA Tetrachlo...	4.654	5.585	7430824	20131682	18.434	19.521
28) SA Decachlor...	10.432	11.509	7559930	18445832	18.320	20.502

Target Compounds

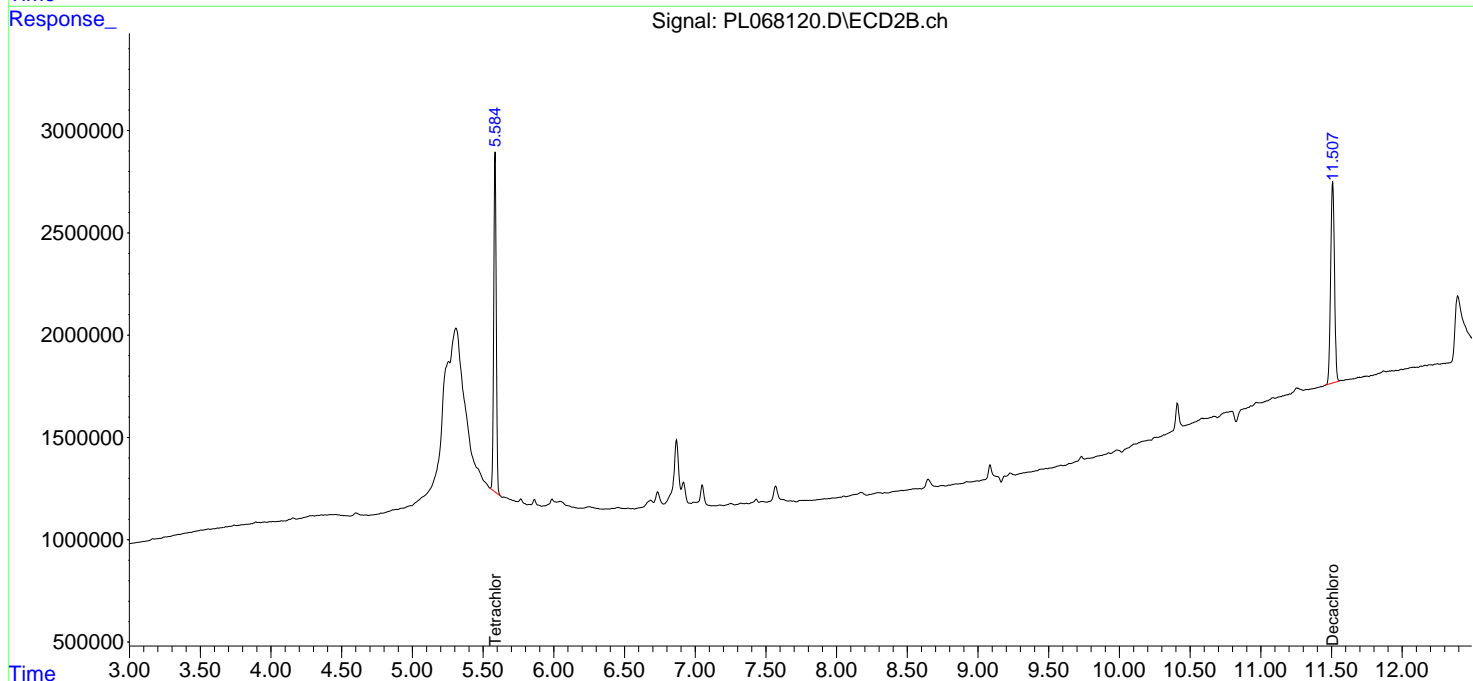
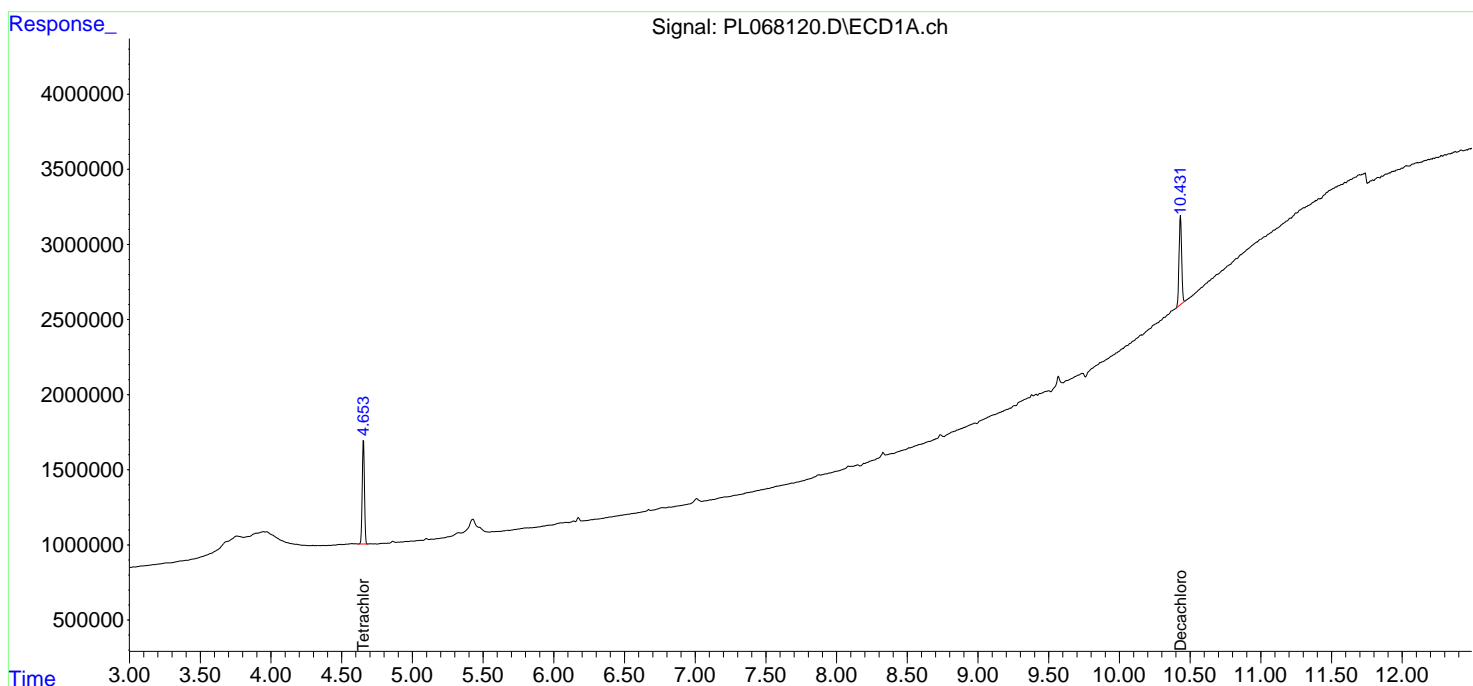
(f)=RT Delta > 1/2 Window (#)=Amounts differ by > 25% (m)=manual int.

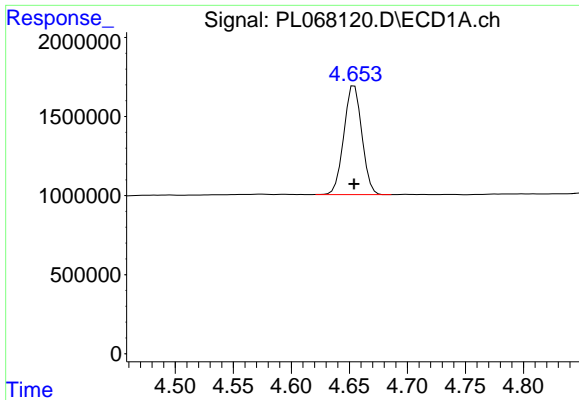
Data Path : Z:\pestpcbsrv\HPCHEM1\ECD_L\Data\PL071521\
 Data File : PL068120.D
 Signal(s) : Signal #1: ECD1A.ch Signal #2: ECD2B.ch
 Acq On : 14 Jul 2021 17:25
 Operator : AR\AJ
 Sample : I.BLK
 Misc :
 ALS Vial : 2 Sample Multiplier: 1

Instrument :
 ECD_L
 ClientSampled :
 I.BLK

Integration File signal 1: autoint1.e
 Integration File signal 2: autoint2.e
 Quant Time: Jul 15 04:46:41 2021
 Quant Method : Z:\pestpcbsrv\HPCHEM1\ECD_L\methods\PL071521.M
 Quant Title : GC Extractables
 QLast Update : Thu Jul 15 04:04:16 2021
 Response via : Initial Calibration
 Integrator: ChemStation

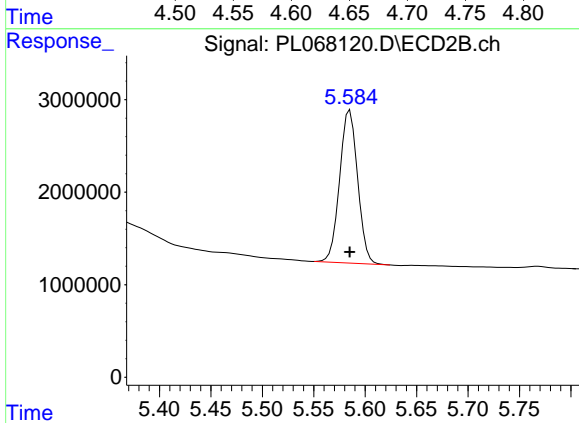
Volume Inj. : 1 µl
 Signal #1 Phase : ZB-MR2 Signal #2 Phase: ZB-MR1
 Signal #1 Info : 30M x 0.32mm x0.2 Signal #2 Info : 30M x 0.32mm x0.5µm



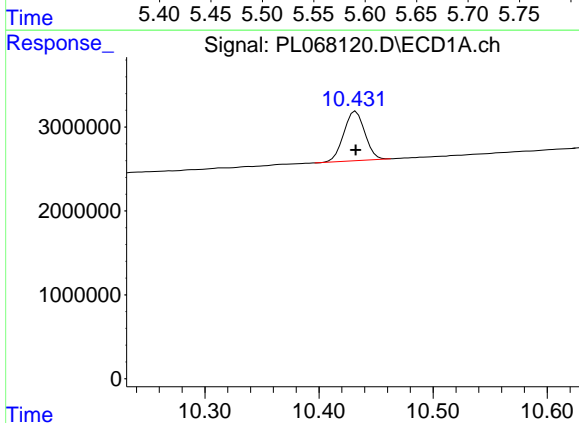


#1 Tetrachloro-m-xylene
R.T.: 4.654 min
Delta R.T.: 0.000 min
Response: 7430824
Conc: 18.43 ng/ml

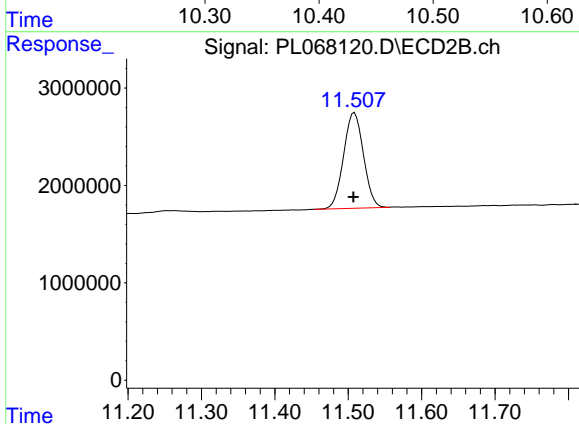
Instrument :
ECD_L
ClientSampled :
I.BLK



#1 Tetrachloro-m-xylene
R.T.: 5.585 min
Delta R.T.: 0.000 min
Response: 20131682
Conc: 19.52 ng/ml



#28 Decachlorobiphenyl
R.T.: 10.432 min
Delta R.T.: 0.000 min
Response: 7559930
Conc: 18.32 ng/ml



#28 Decachlorobiphenyl
R.T.: 11.509 min
Delta R.T.: 0.001 min
Response: 18445832
Conc: 20.50 ng/ml