

Data Path : Z:\pestpcbsrv\HPCHEM1\ECD_L\Data\PL071521\
 Data File : PL068128.D
 Signal(s) : Signal #1: ECD1A.ch Signal #2: ECD2B.ch
 Acq On : 14 Jul 2021 19:38
 Operator : AR\AJ
 Sample : PCHLORICC1000
 Misc :
 ALS Vial : 10 Sample Multiplier: 1

Instrument :
 ECD_L
 ClientSampleId :
 PCHLORICC1000

Integration File signal 1: autoint1.e
 Integration File signal 2: autoint2.e
 Quant Time: Jul 15 03:47:51 2021
 Quant Method : Z:\pestpcbsrv\HPCHEM1\ECD_L\methods\PL071521.M
 Quant Title : GC Extractables
 QLast Update : Thu Jul 15 03:47:30 2021
 Response via : Initial Calibration
 Integrator: ChemStation

Volume Inj. : 1 µl
 Signal #1 Phase : ZB-MR2 Signal #2 Phase: ZB-MR1
 Signal #1 Info : 30M x 0.32mm x0.2 Signal #2 Info : 30M x 0.32mm x0.5µm

Compound	RT#1	RT#2	Resp#1	Resp#2	ng/ml	ng/ml

System Monitoring Compounds						
1) SA Tetrachlo...	4.654	5.585	53436916	115.1E6	99.262	102.381
28) SA Decachlor...	10.432	11.508	42021799	91587626	100.697	97.688
Target Compounds						
23) Chlordane-1	5.986	6.969	14505561	39580838	982.320	1022.648
24) Chlordane-2	6.675	7.560	18056804	43950067	952.728	977.959
25) Chlordane-3	7.378	8.316	50577732	169.5E6	1000.740	1048.381
26) Chlordane-4	7.447	8.399	52950274	203.5E6	992.824	1031.951
27) Chlordane-5	8.397	9.286	17367572	37798657	978.346	1030.752

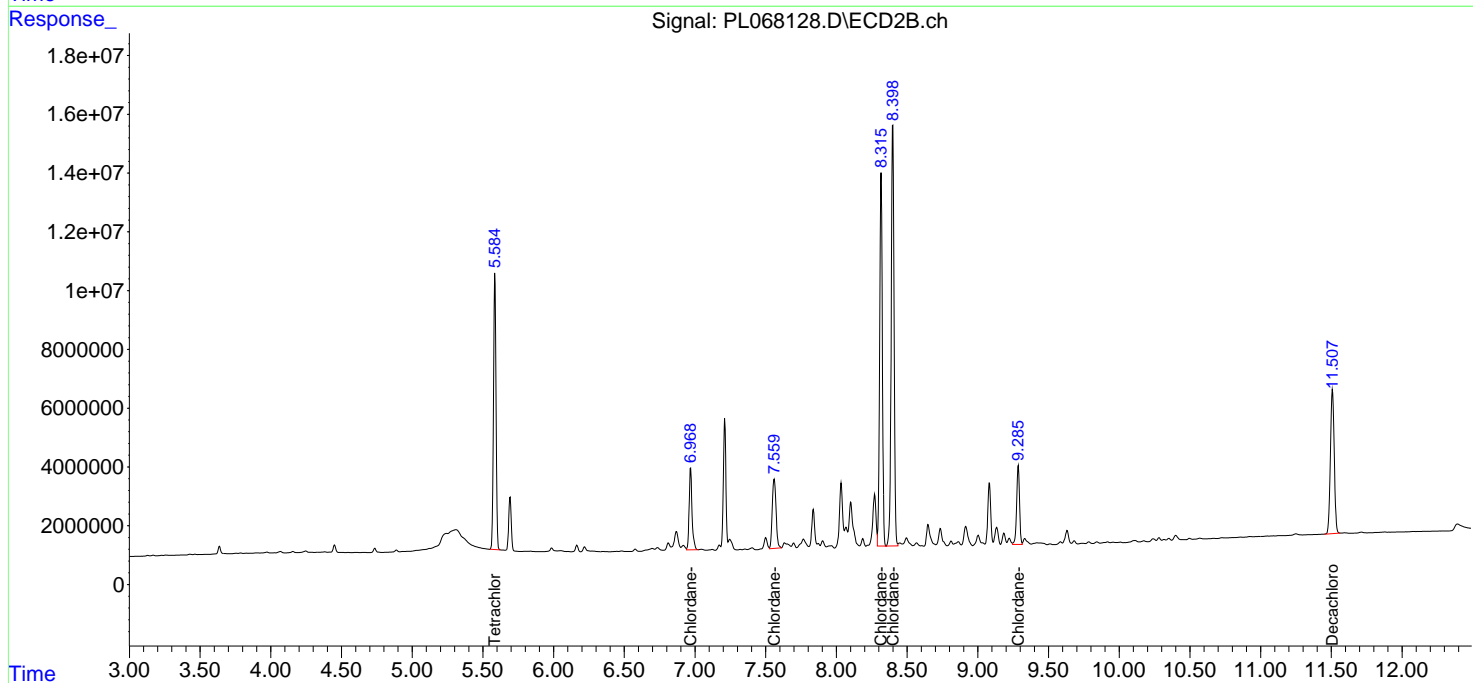
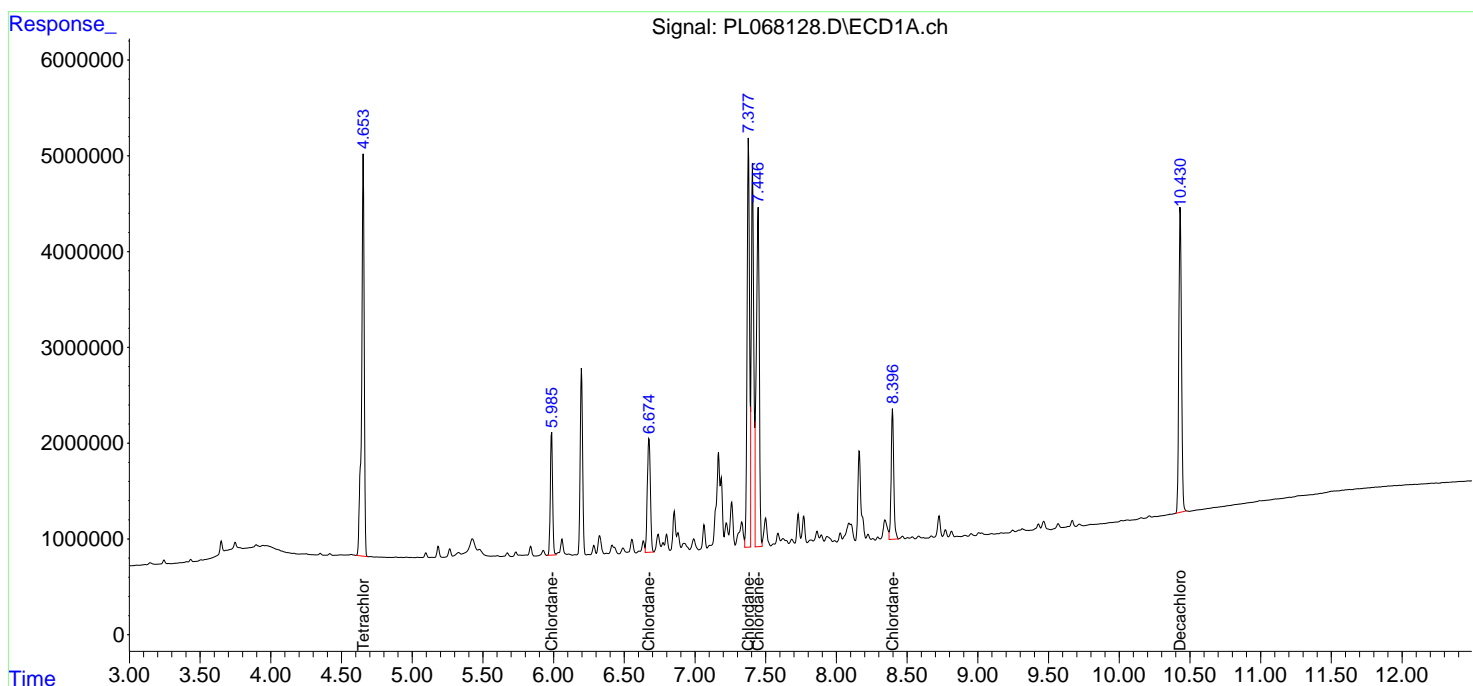
(f)=RT Delta > 1/2 Window (#)=Amounts differ by > 25% (m)=manual int.

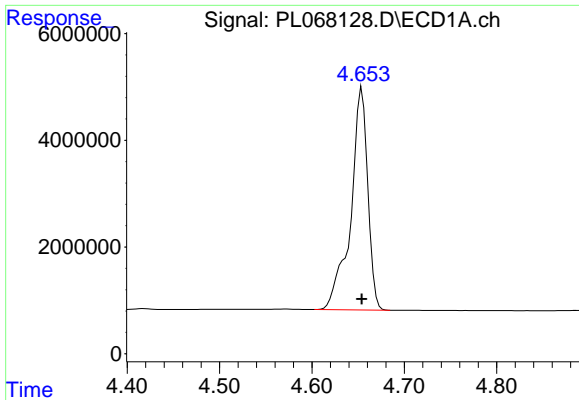
Data Path : Z:\pestpcbsrv\HPCHEM1\ECD_L\Data\PL071521\
 Data File : PL068128.D
 Signal(s) : Signal #1: ECD1A.ch Signal #2: ECD2B.ch
 Acq On : 14 Jul 2021 19:38
 Operator : AR\AJ
 Sample : PCHLORICC1000
 Misc :
 ALS Vial : 10 Sample Multiplier: 1

Instrument :
 ECD_L
 ClientSampled :
 PCHLORICC1000

Integration File signal 1: autoint1.e
 Integration File signal 2: autoint2.e
 Quant Time: Jul 15 03:47:51 2021
 Quant Method : Z:\pestpcbsrv\HPCHEM1\ECD_L\methods\PL071521.M
 Quant Title : GC Extractables
 QLast Update : Thu Jul 15 03:47:30 2021
 Response via : Initial Calibration
 Integrator: ChemStation

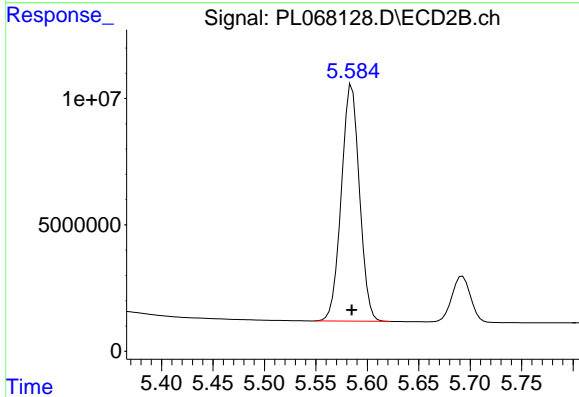
Volume Inj. : 1 µl
 Signal #1 Phase : ZB-MR2 Signal #2 Phase: ZB-MR1
 Signal #1 Info : 30M x 0.32mm x0.2 Signal #2 Info : 30M x 0.32mm x0.5µm



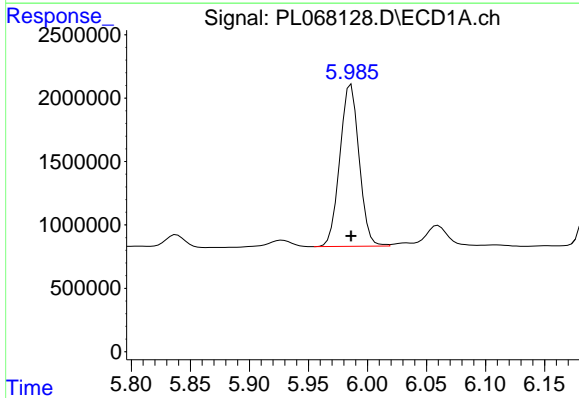


#1 Tetrachloro-m-xylene
 R.T.: 4.654 min
 Delta R.T.: 0.000 min
 Response: 53436916
 Conc: 99.26 ng/ml

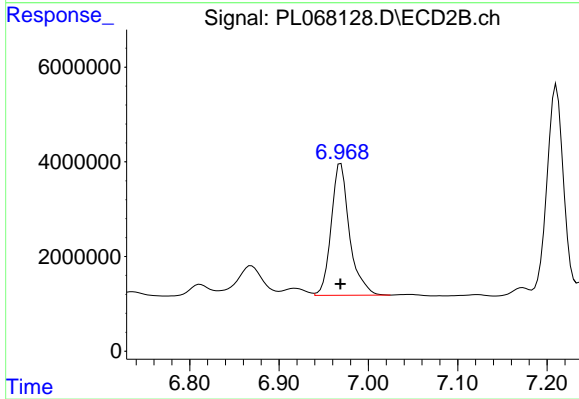
Instrument :
 ECD_L
 ClientSampleId :
 PCHLORICC1000



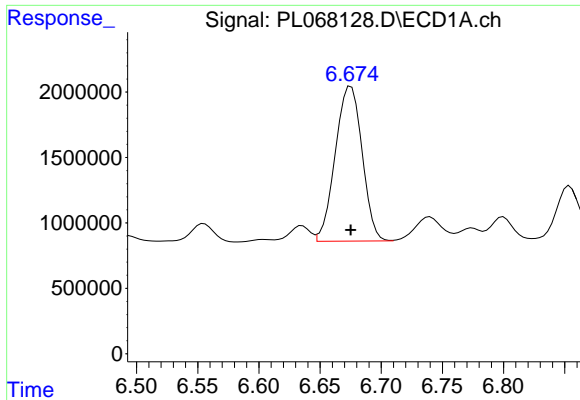
#1 Tetrachloro-m-xylene
 R.T.: 5.585 min
 Delta R.T.: 0.000 min
 Response: 115055923
 Conc: 102.38 ng/ml



#23 Chlordane-1
 R.T.: 5.986 min
 Delta R.T.: 0.000 min
 Response: 14505561
 Conc: 982.32 ng/ml

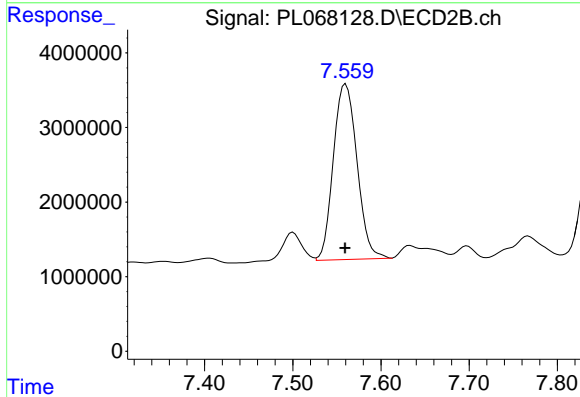


#23 Chlordane-1
 R.T.: 6.969 min
 Delta R.T.: 0.000 min
 Response: 39580838
 Conc: 1022.65 ng/ml

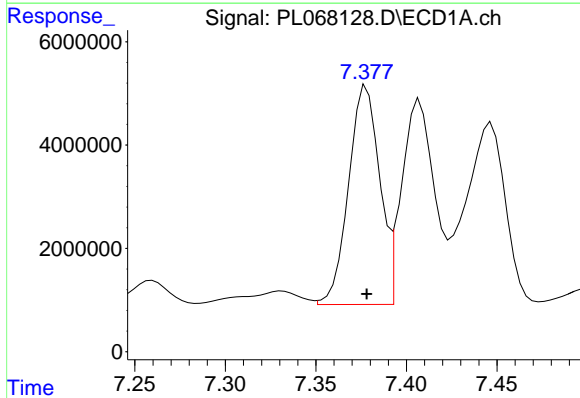


#24 Chlordane-2
 R.T.: 6.675 min
 Delta R.T.: 0.000 min
 Response: 18056804
 Conc: 952.73 ng/ml

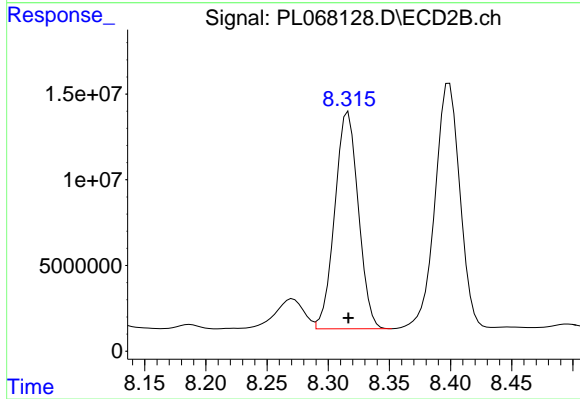
Instrument :
 ECD_L
 ClientSampleId :
 PCHLORICC1000



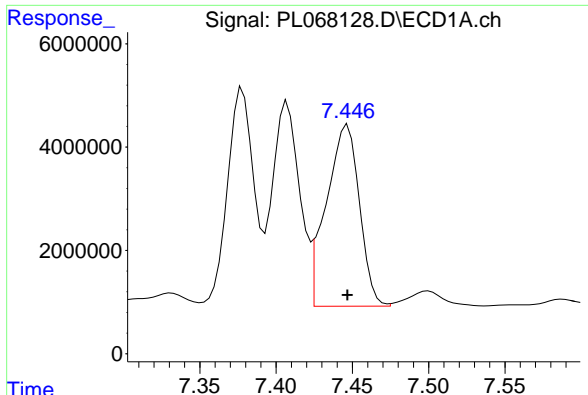
#24 Chlordane-2
 R.T.: 7.560 min
 Delta R.T.: 0.000 min
 Response: 43950067
 Conc: 977.96 ng/ml



#25 Chlordane-3
 R.T.: 7.378 min
 Delta R.T.: 0.000 min
 Response: 50577732
 Conc: 1000.74 ng/ml



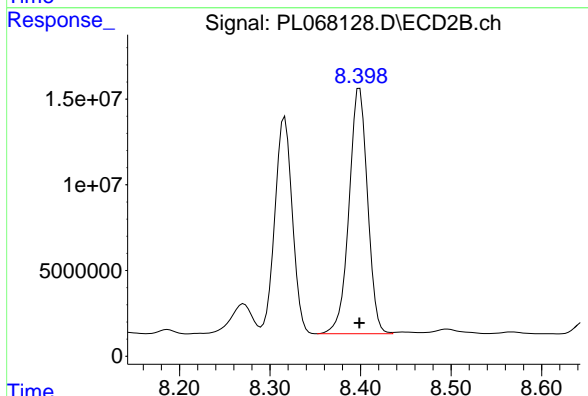
#25 Chlordane-3
 R.T.: 8.316 min
 Delta R.T.: 0.000 min
 Response: 169486950
 Conc: 1048.38 ng/ml



#26 Chlordane-4

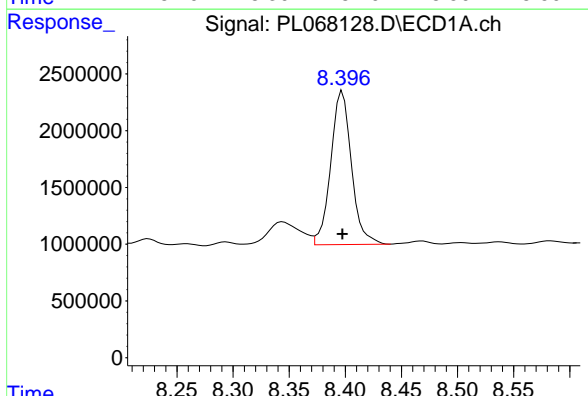
R.T.: 7.447 min
 Delta R.T.: 0.000 min
 Response: 52950274
 Conc: 992.82 ng/ml

Instrument :
 ECD_L
 ClientSampleId :
 PCHLORICC1000



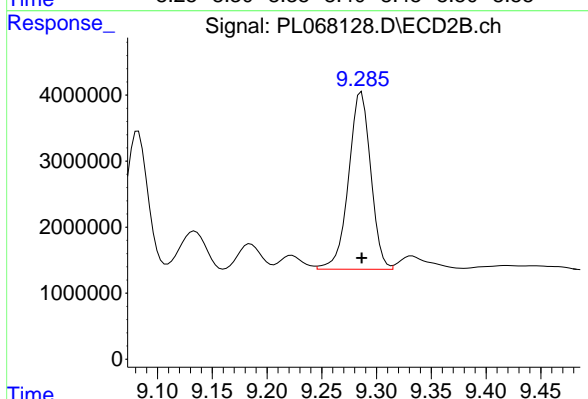
#26 Chlordane-4

R.T.: 8.399 min
 Delta R.T.: 0.000 min
 Response: 203506428
 Conc: 1031.95 ng/ml



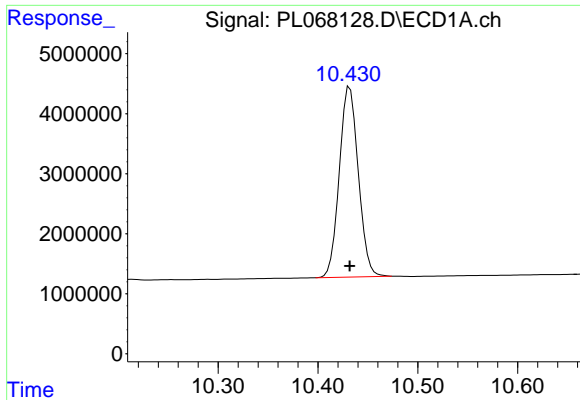
#27 Chlordane-5

R.T.: 8.397 min
 Delta R.T.: 0.000 min
 Response: 17367572
 Conc: 978.35 ng/ml



#27 Chlordane-5

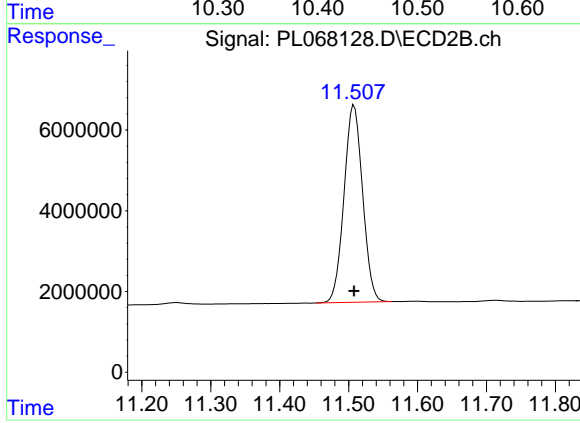
R.T.: 9.286 min
 Delta R.T.: 0.000 min
 Response: 37798657
 Conc: 1030.75 ng/ml



#28 Decachlorobiphenyl

R.T.: 10.432 min
Delta R.T.: 0.000 min
Response: 42021799
Conc: 100.70 ng/ml

Instrument :
ECD_L
ClientSampleId :
PCHLORICC1000



#28 Decachlorobiphenyl

R.T.: 11.508 min
Delta R.T.: 0.000 min
Response: 91587626
Conc: 97.69 ng/ml