

Data Path : Z:\pestpcbsrv\HPCHEM1\ECD\_L\Data\PL071521\  
 Data File : PL068138.D  
 Signal(s) : Signal #1: ECD1A.ch Signal #2: ECD2B.ch  
 Acq On : 14 Jul 2021 22:24  
 Operator : AR\AJ  
 Sample : PSTDICV050  
 Misc :  
 ALS Vial : 20 Sample Multiplier: 1

Instrument :  
 ECD\_L  
 ClientSampleId :  
 ICVPL071521

Integration File signal 1: autoint1.e  
 Integration File signal 2: autoint2.e  
 Quant Time: Jul 15 04:47:25 2021  
 Quant Method : Z:\pestpcbsrv\HPCHEM1\ECD\_L\methods\PL071521.M  
 Quant Title : GC Extractables  
 QLast Update : Thu Jul 15 04:04:16 2021  
 Response via : Initial Calibration  
 Integrator: ChemStation

Volume Inj. : 1 µl  
 Signal #1 Phase : ZB-MR2 Signal #2 Phase: ZB-MR1  
 Signal #1 Info : 30M x 0.32mm x0.2 Signal #2 Info : 30M x 0.32mm x0.5µm

Compound	RT#1	RT#2	Resp#1	Resp#2	ng/ml	ng/ml
-----						
System Monitoring Compounds						
1) SA Tetrachlo...	4.654	5.585	21400208	52182459	53.087	50.599
28) SA Decachlor...	10.432	11.509	17641635	44153851	42.751	49.076
Target Compounds						
2) A alpha-BHC	5.361	6.165	28805686	70698073	53.432	51.622
3) MA gamma-BHC...	5.785	6.561	28001701	66251400	53.923	51.302
4) MA Heptachlor	6.198	7.210	28941707	65913738	52.405	51.031
5) MB Aldrin	6.524	7.582	26717613	60017762	53.133	49.789
6) B beta-BHC	6.163	6.812	13406082	32370820	51.552	46.512
7) B delta-BHC	6.425	7.080	27003184	63768734	54.174	52.343
8) B Heptachlo...	7.100	8.047	24407942	55800578	51.087	50.197
9) A Endosulfan I	7.504	8.453	21257269	50917336	47.632	49.967
10) B gamma-Chl...	7.378	8.316	23435615	55470504	48.700	49.902
11) B alpha-Chl...	7.448	8.398	23156122	55596643	48.389	49.882
12) B 4,4'-DDE	7.661	8.583	20458695	51459237	47.331	50.699
13) MA Dieldrin	7.790	8.742	21354884	52579662	46.967	50.442
14) MA Endrin	8.081	8.981	19156771	44543852	44.476	50.238
15) B Endosulfa...	8.391	9.214	17919858	43868390	45.289	49.548
16) A 4,4'-DDD	8.247	9.122	16862119	42953408	45.850	50.129
17) MA 4,4'-DDT	8.508	9.440	17985678	47137070	44.468	49.988
18) B Endrin al...	8.579	9.349	14052347	35826316	45.075	49.122
19) B Endosulfa...	8.811	9.586	18110696	44250173	43.970	49.494
20) A Methoxychlor	9.104	9.925	10517652	25279974	44.378	49.534
21) B Endrin ke...	9.330	10.085	20085684	48834549	44.020	49.392
22) Mirex	9.521	10.552	16025899	37172196	44.745	48.848
-----						

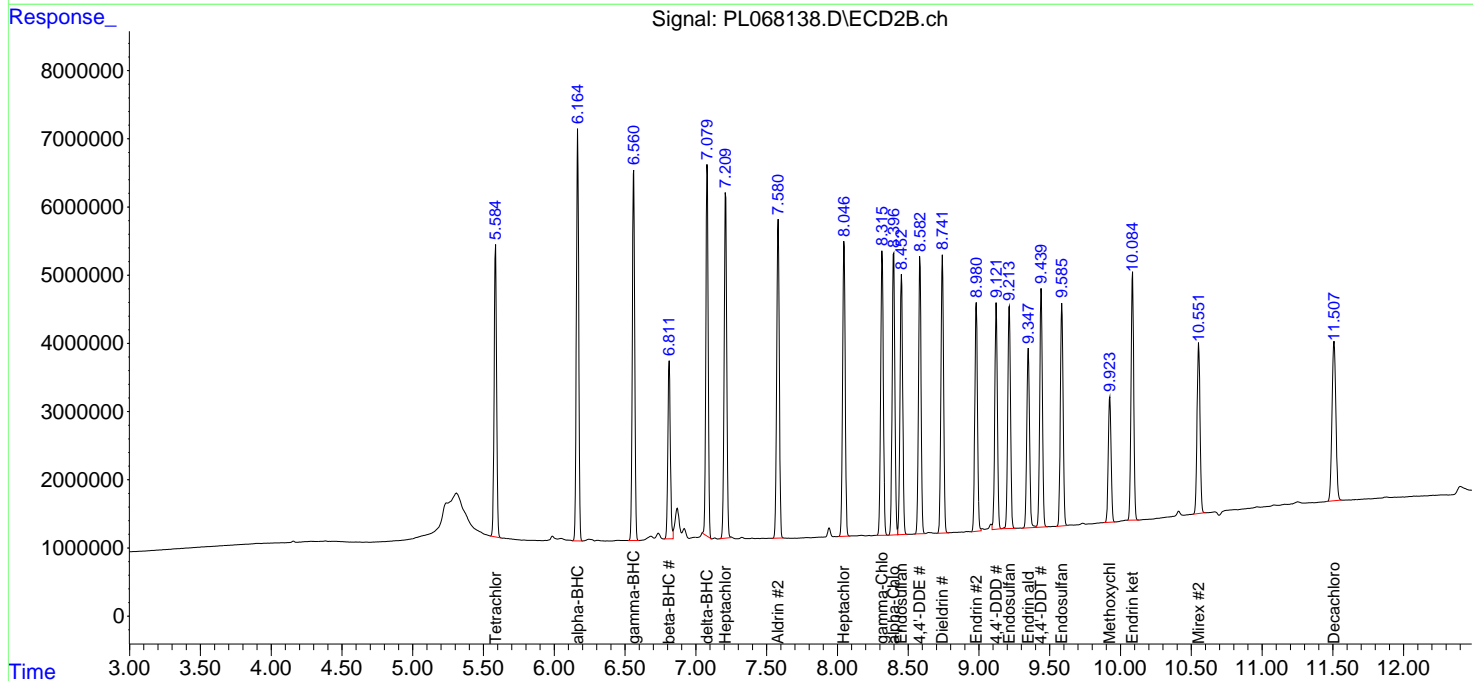
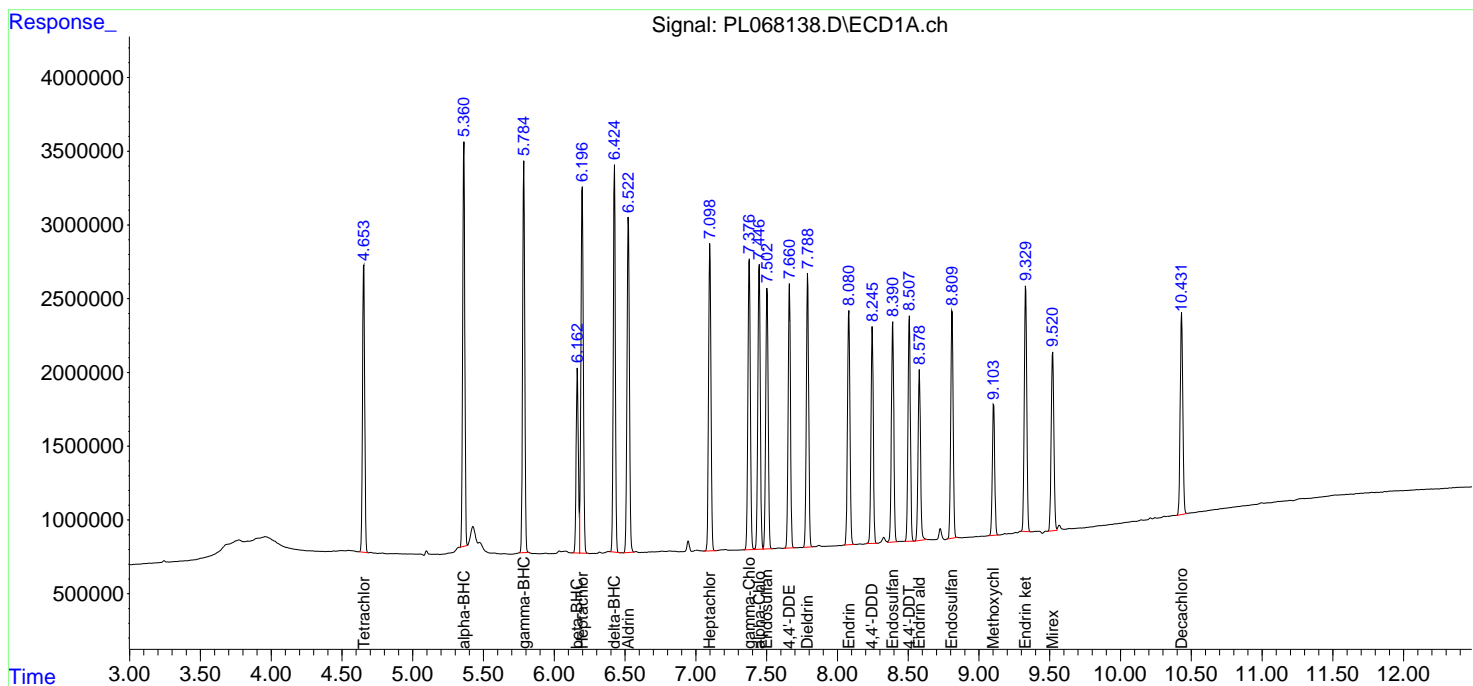
(f)=RT Delta > 1/2 Window (#)=Amounts differ by > 25% (m)=manual int.

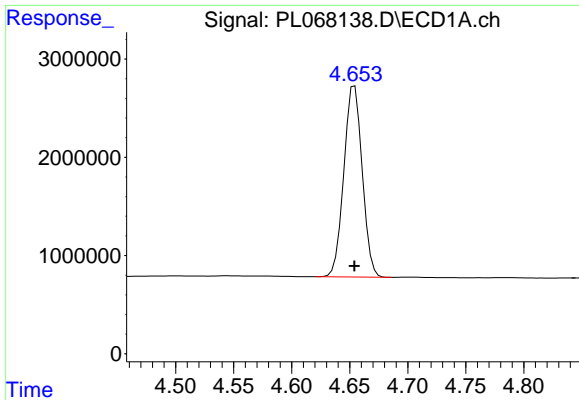
Data Path : Z:\pestpcbsrv\HPCHEM1\ECD\_L\Data\PL071521\  
 Data File : PL068138.D  
 Signal(s) : Signal #1: ECD1A.ch Signal #2: ECD2B.ch  
 Acq On : 14 Jul 2021 22:24  
 Operator : AR\AJ  
 Sample : PSTDICV050  
 Misc :  
 ALS Vial : 20 Sample Multiplier: 1

Instrument :  
 ECD\_L  
 Client Sampled :  
 ICVPL071521

Integration File signal 1: autoint1.e  
 Integration File signal 2: autoint2.e  
 Quant Time: Jul 15 04:47:25 2021  
 Quant Method : Z:\pestpcbsrv\HPCHEM1\ECD\_L\methods\PL071521.M  
 Quant Title : GC Extractables  
 QLast Update : Thu Jul 15 04:04:16 2021  
 Response via : Initial Calibration  
 Integrator: ChemStation

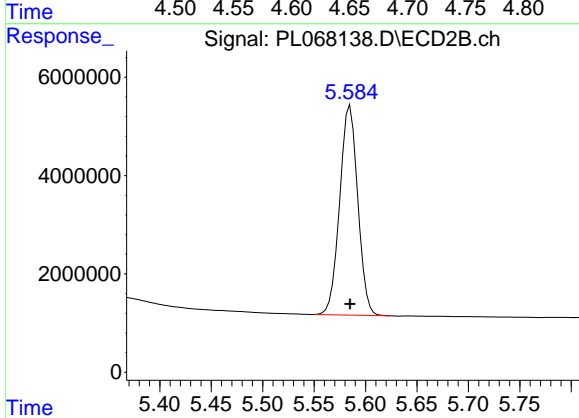
Volume Inj. : 1 µl  
 Signal #1 Phase : ZB-MR2 Signal #2 Phase: ZB-MR1  
 Signal #1 Info : 30M x 0.32mm x0.2 Signal #2 Info : 30M x 0.32mm x0.5µm



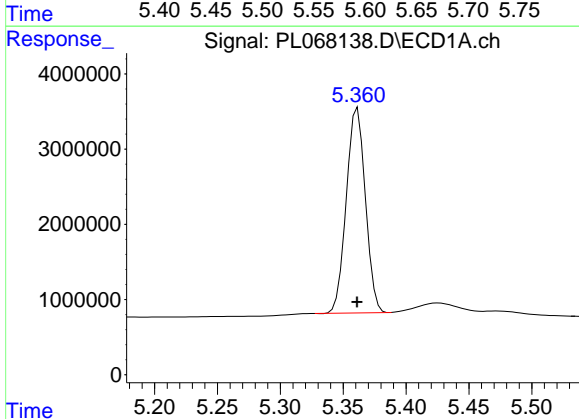


#1 Tetrachloro-m-xylene  
R.T.: 4.654 min  
Delta R.T.: 0.000 min  
Response: 21400208  
Conc: 53.09 ng/ml

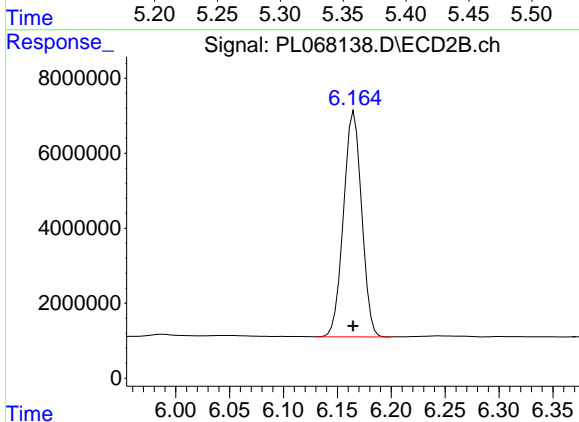
Instrument :  
ECD\_L  
ClientSampleId :  
ICVPL071521



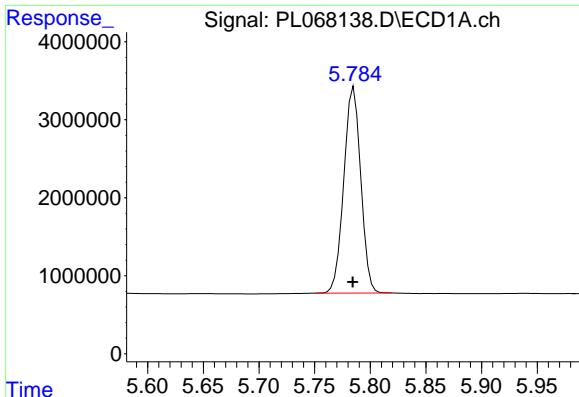
#1 Tetrachloro-m-xylene  
R.T.: 5.585 min  
Delta R.T.: 0.000 min  
Response: 52182459  
Conc: 50.60 ng/ml



#2 alpha-BHC  
R.T.: 5.361 min  
Delta R.T.: 0.000 min  
Response: 28805686  
Conc: 53.43 ng/ml



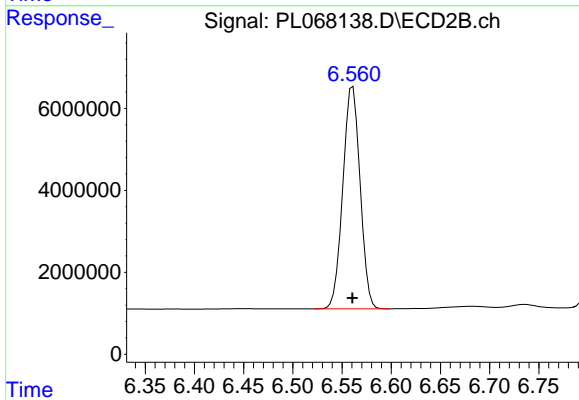
#2 alpha-BHC  
R.T.: 6.165 min  
Delta R.T.: 0.000 min  
Response: 70698073  
Conc: 51.62 ng/ml



#3 gamma-BHC (Lindane)

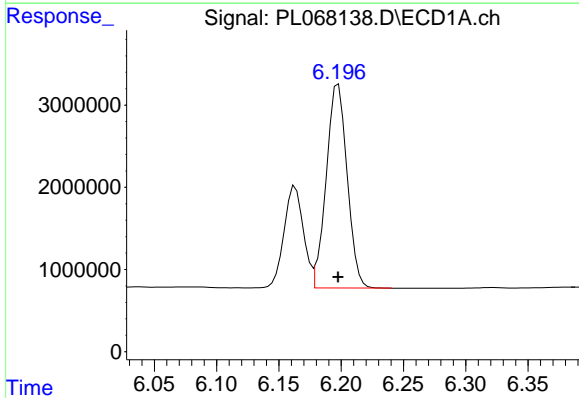
R.T.: 5.785 min  
 Delta R.T.: 0.001 min  
 Response: 28001701  
 Conc: 53.92 ng/ml

Instrument :  
 ECD\_L  
 ClientSampleId :  
 ICVPL071521



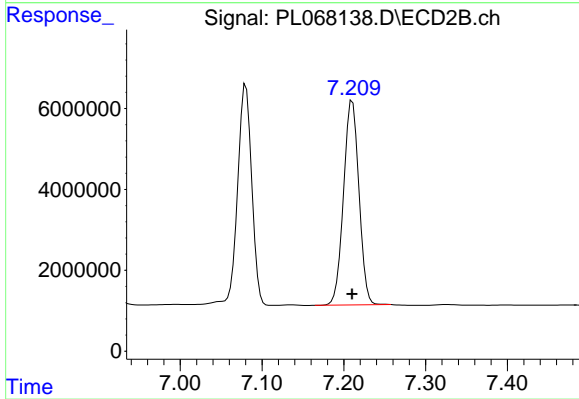
#3 gamma-BHC (Lindane)

R.T.: 6.561 min  
 Delta R.T.: 0.000 min  
 Response: 66251400  
 Conc: 51.30 ng/ml



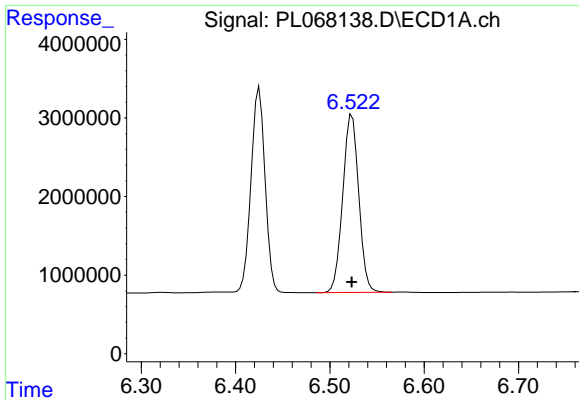
#4 Heptachlor

R.T.: 6.198 min  
 Delta R.T.: 0.000 min  
 Response: 28941707  
 Conc: 52.40 ng/ml



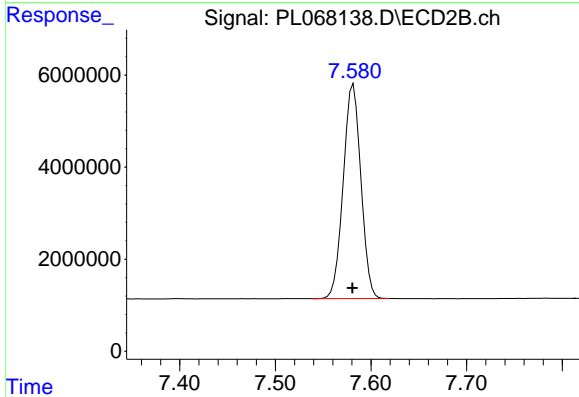
#4 Heptachlor

R.T.: 7.210 min  
 Delta R.T.: 0.000 min  
 Response: 65913738  
 Conc: 51.03 ng/ml

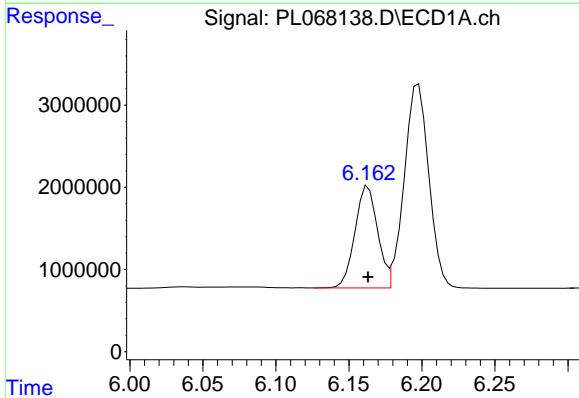


#5 Aldrin  
 R.T.: 6.524 min  
 Delta R.T.: 0.000 min  
 Response: 26717613  
 Conc: 53.13 ng/ml

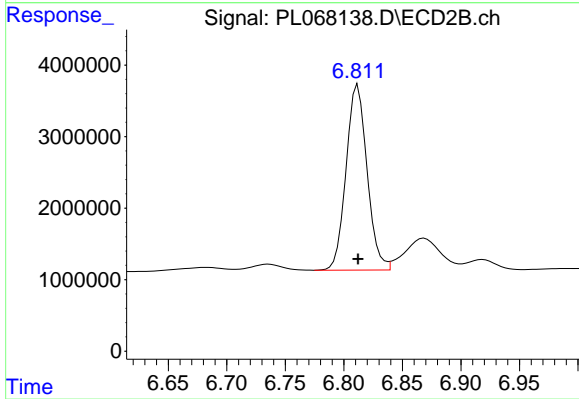
**Instrument :**  
 ECD\_L  
**ClientSampled :**  
 ICVPL071521



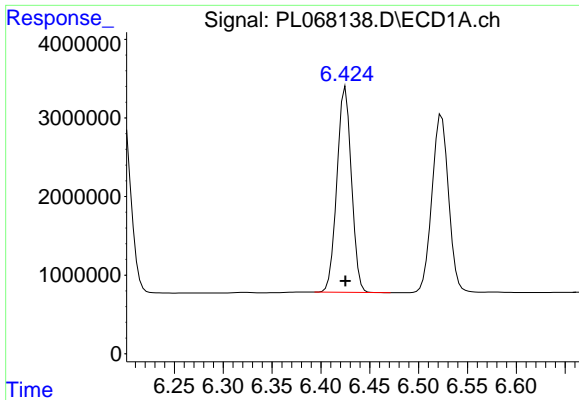
#5 Aldrin  
 R.T.: 7.582 min  
 Delta R.T.: 0.001 min  
 Response: 60017762  
 Conc: 49.79 ng/ml



#6 beta-BHC  
 R.T.: 6.163 min  
 Delta R.T.: 0.000 min  
 Response: 13406082  
 Conc: 51.55 ng/ml

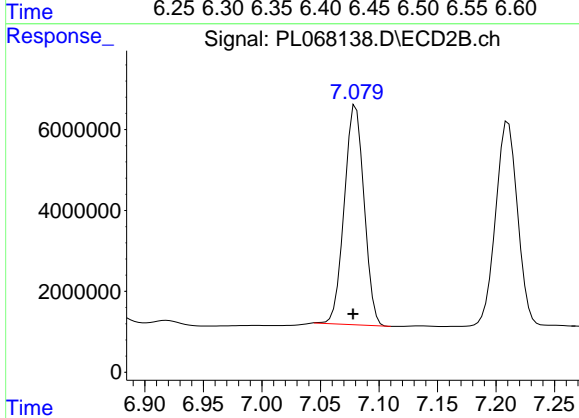


#6 beta-BHC  
 R.T.: 6.812 min  
 Delta R.T.: 0.000 min  
 Response: 32370820  
 Conc: 46.51 ng/ml

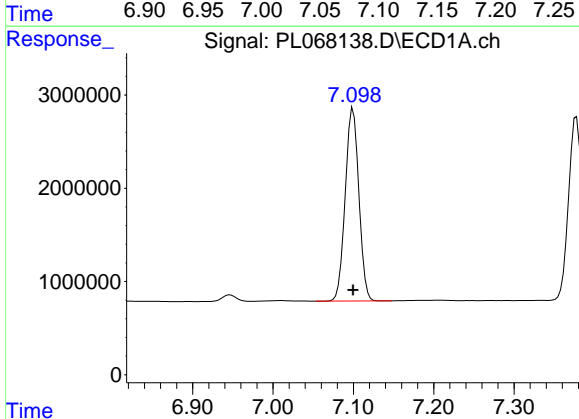


#7 delta-BHC  
 R.T.: 6.425 min  
 Delta R.T.: 0.000 min  
 Response: 27003184  
 Conc: 54.17 ng/ml

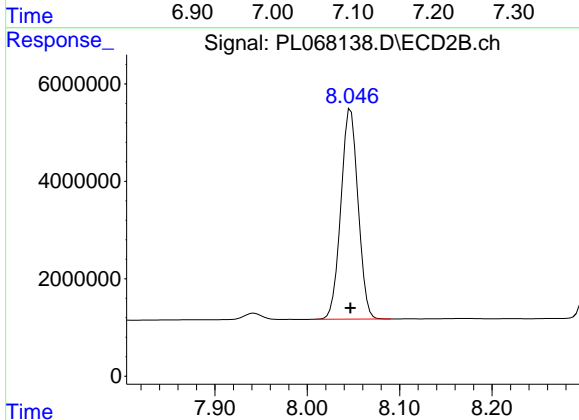
Instrument :  
 ECD\_L  
 ClientSampleId :  
 ICVPL071521



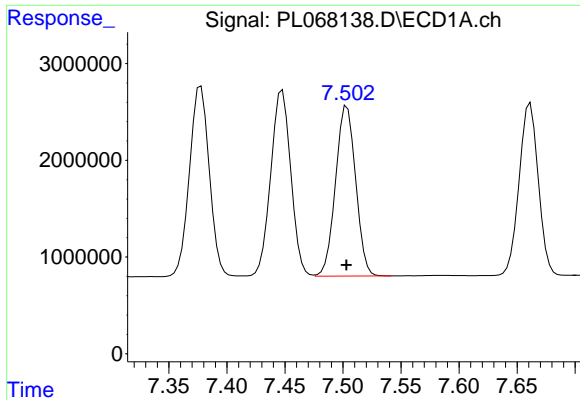
#7 delta-BHC  
 R.T.: 7.080 min  
 Delta R.T.: 0.002 min  
 Response: 63768734  
 Conc: 52.34 ng/ml



#8 Heptachlor epoxide  
 R.T.: 7.100 min  
 Delta R.T.: 0.000 min  
 Response: 24407942  
 Conc: 51.09 ng/ml

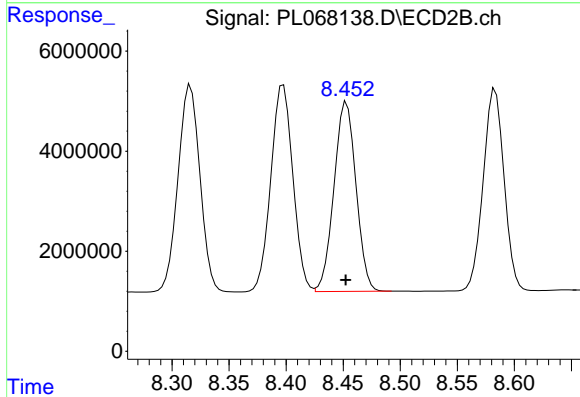


#8 Heptachlor epoxide  
 R.T.: 8.047 min  
 Delta R.T.: 0.000 min  
 Response: 55800578  
 Conc: 50.20 ng/ml

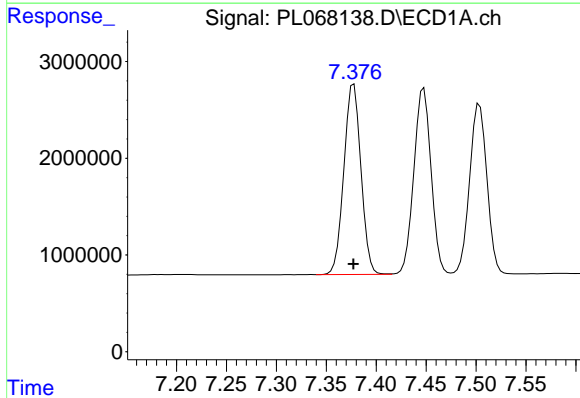


#9 Endosulfan I  
 R.T.: 7.504 min  
 Delta R.T.: 0.000 min  
 Response: 21257269  
 Conc: 47.63 ng/ml

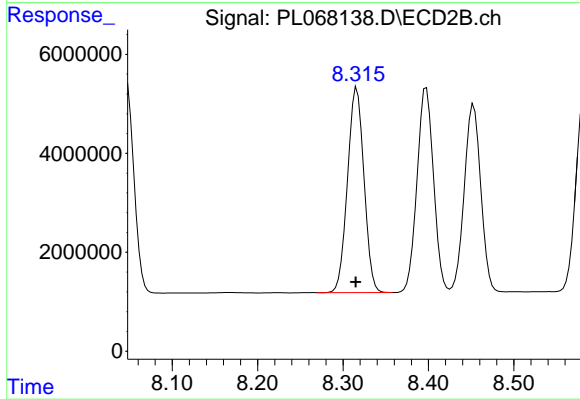
Instrument :  
 ECD\_L  
 ClientSampleId :  
 ICVPL071521



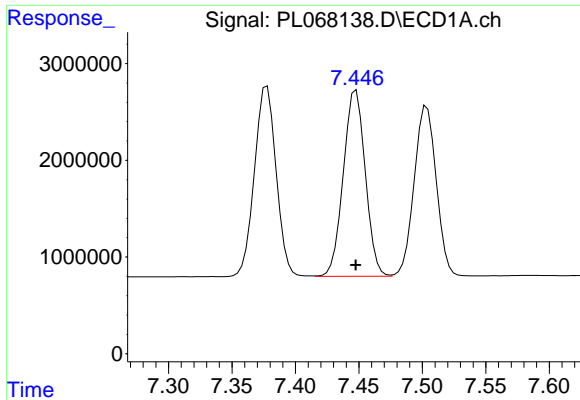
#9 Endosulfan I  
 R.T.: 8.453 min  
 Delta R.T.: 0.000 min  
 Response: 50917336  
 Conc: 49.97 ng/ml



#10 gamma-Chlordane  
 R.T.: 7.378 min  
 Delta R.T.: 0.000 min  
 Response: 23435615  
 Conc: 48.70 ng/ml



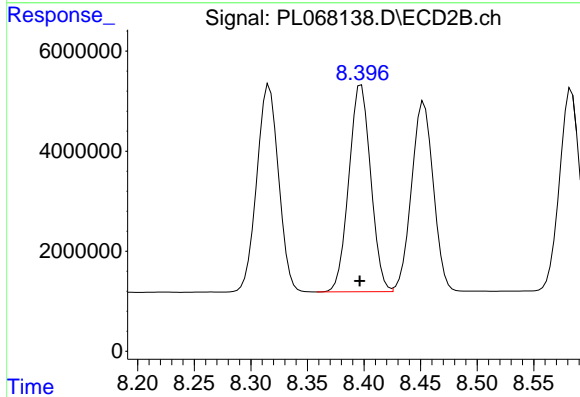
#10 gamma-Chlordane  
 R.T.: 8.316 min  
 Delta R.T.: 0.001 min  
 Response: 55470504  
 Conc: 49.90 ng/ml



#11 alpha-Chlordane

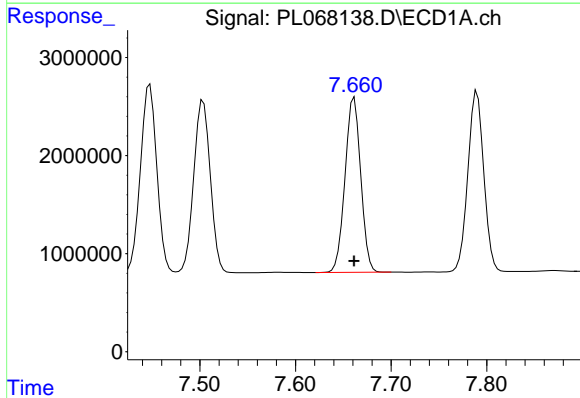
R.T.: 7.448 min  
 Delta R.T.: 0.000 min  
 Response: 23156122  
 Conc: 48.39 ng/ml

Instrument :  
 ECD\_L  
 ClientSampleId :  
 ICVPL071521



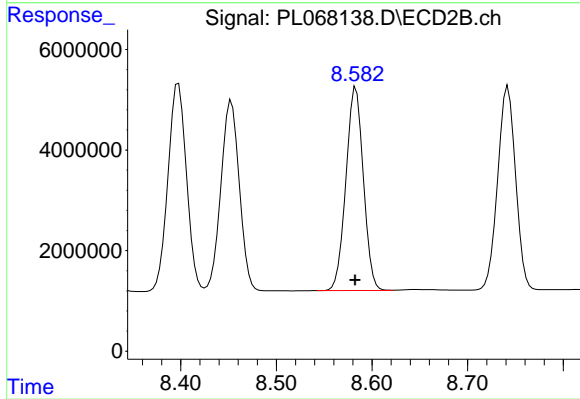
#11 alpha-Chlordane

R.T.: 8.398 min  
 Delta R.T.: 0.001 min  
 Response: 55596643  
 Conc: 49.88 ng/ml



#12 4,4'-DDE

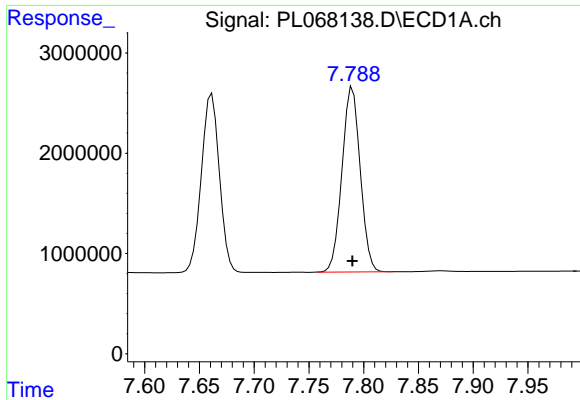
R.T.: 7.661 min  
 Delta R.T.: 0.000 min  
 Response: 20458695  
 Conc: 47.33 ng/ml



#12 4,4'-DDE

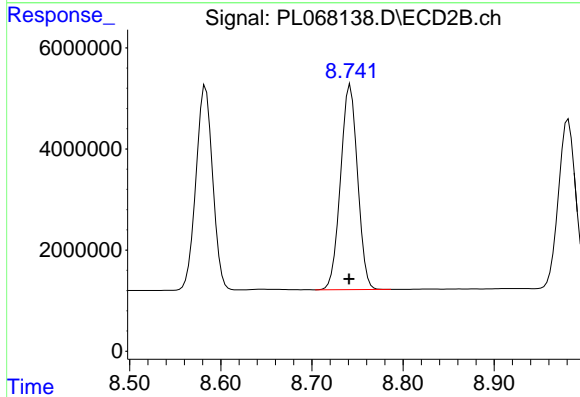
R.T.: 8.583 min  
 Delta R.T.: 0.000 min  
 Response: 51459237  
 Conc: 50.70 ng/ml



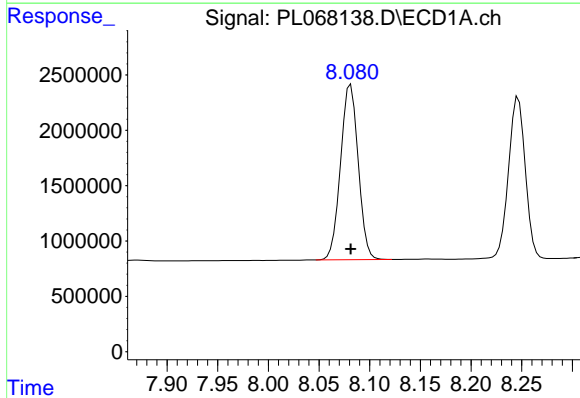


#13 Dieldrin  
 R.T.: 7.790 min  
 Delta R.T.: 0.000 min  
 Response: 21354884  
 Conc: 46.97 ng/ml

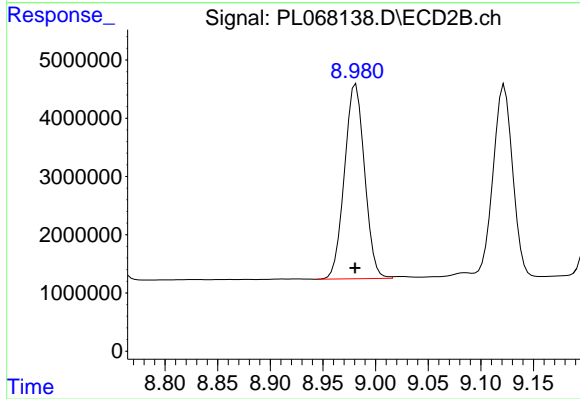
Instrument :  
 ECD\_L  
 ClientSampled :  
 ICVPL071521



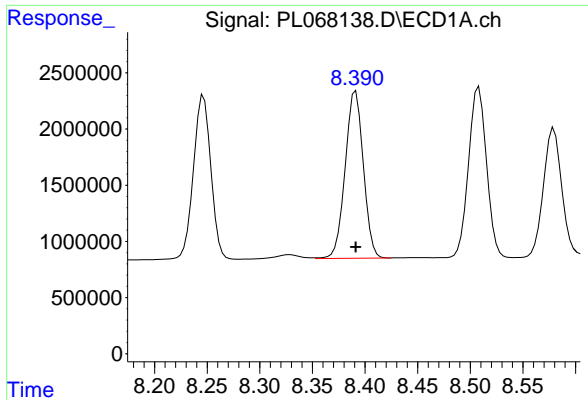
#13 Dieldrin  
 R.T.: 8.742 min  
 Delta R.T.: 0.001 min  
 Response: 52579662  
 Conc: 50.44 ng/ml



#14 Endrin  
 R.T.: 8.081 min  
 Delta R.T.: 0.000 min  
 Response: 19156771  
 Conc: 44.48 ng/ml



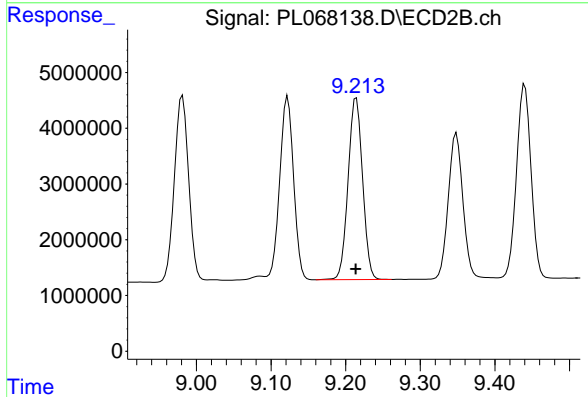
#14 Endrin  
 R.T.: 8.981 min  
 Delta R.T.: 0.000 min  
 Response: 44543852  
 Conc: 50.24 ng/ml



#15 Endosulfan II

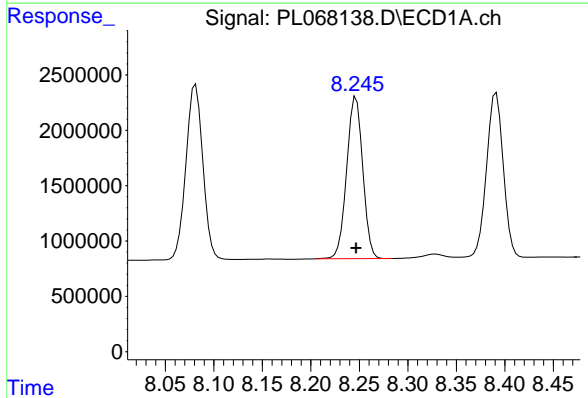
R.T.: 8.391 min  
 Delta R.T.: 0.000 min  
 Response: 17919858  
 Conc: 45.29 ng/ml

Instrument :  
 ECD\_L  
 ClientSampleId :  
 ICVPL071521



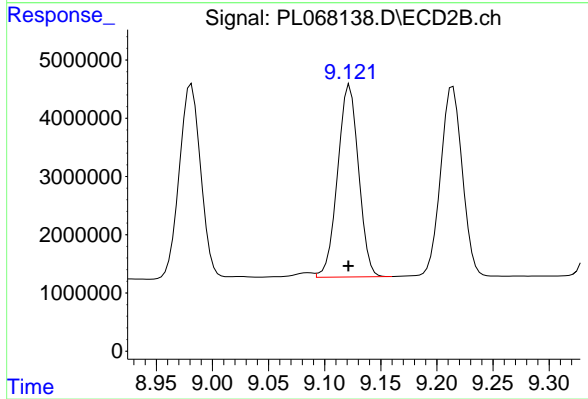
#15 Endosulfan II

R.T.: 9.214 min  
 Delta R.T.: 0.000 min  
 Response: 43868390  
 Conc: 49.55 ng/ml



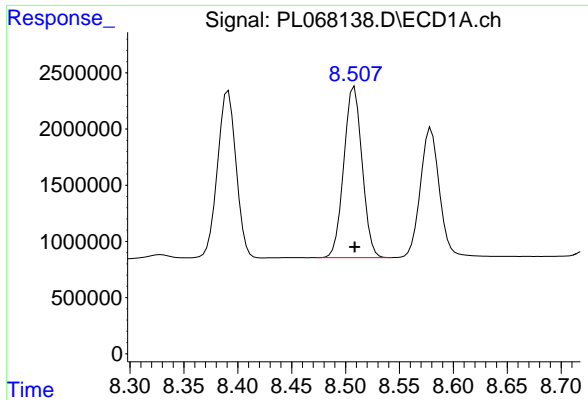
#16 4,4'-DDD

R.T.: 8.247 min  
 Delta R.T.: 0.000 min  
 Response: 16862119  
 Conc: 45.85 ng/ml



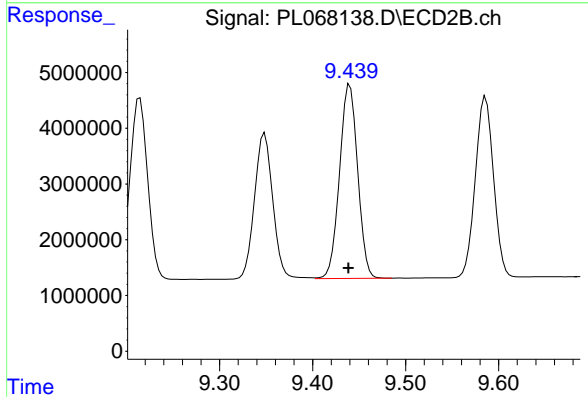
#16 4,4'-DDD

R.T.: 9.122 min  
 Delta R.T.: 0.001 min  
 Response: 42953408  
 Conc: 50.13 ng/ml

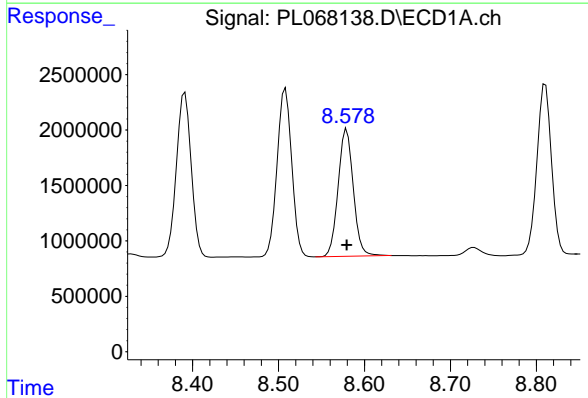


#17 4,4'-DDT  
R.T.: 8.508 min  
Delta R.T.: 0.000 min  
Response: 17985678  
Conc: 44.47 ng/ml

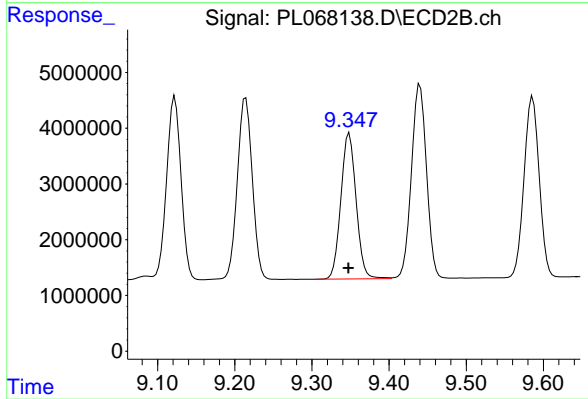
Instrument :  
ECD\_L  
ClientSampleId :  
ICVPL071521



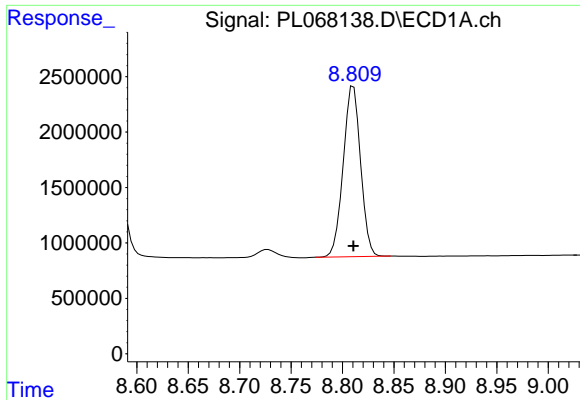
#17 4,4'-DDT  
R.T.: 9.440 min  
Delta R.T.: 0.002 min  
Response: 47137070  
Conc: 49.99 ng/ml



#18 Endrin aldehyde  
R.T.: 8.579 min  
Delta R.T.: 0.000 min  
Response: 14052347  
Conc: 45.08 ng/ml

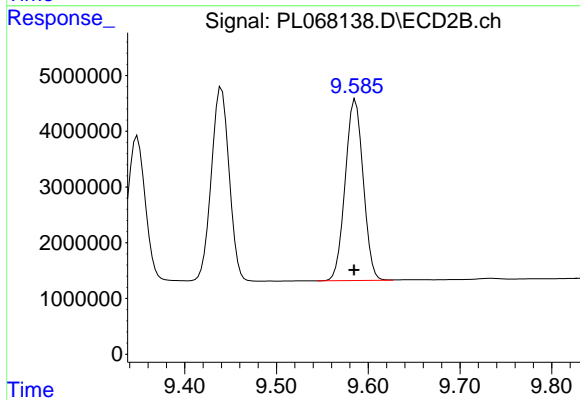


#18 Endrin aldehyde  
R.T.: 9.349 min  
Delta R.T.: 0.001 min  
Response: 35826316  
Conc: 49.12 ng/ml

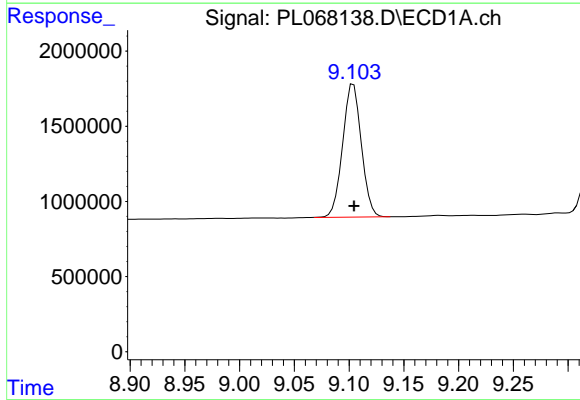


#19 Endosulfan Sulfate  
 R.T.: 8.811 min  
 Delta R.T.: 0.000 min  
 Response: 18110696  
 Conc: 43.97 ng/ml

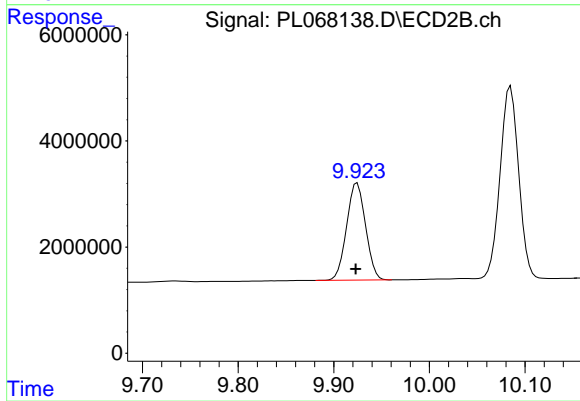
Instrument :  
 ECD\_L  
 ClientSampleId :  
 ICVPL071521



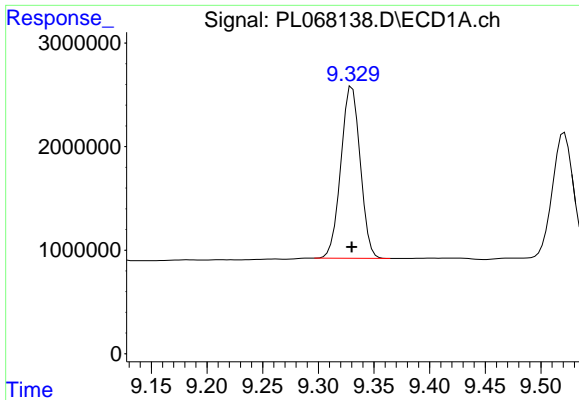
#19 Endosulfan Sulfate  
 R.T.: 9.586 min  
 Delta R.T.: 0.001 min  
 Response: 44250173  
 Conc: 49.49 ng/ml



#20 Methoxychlor  
 R.T.: 9.104 min  
 Delta R.T.: 0.000 min  
 Response: 10517652  
 Conc: 44.38 ng/ml

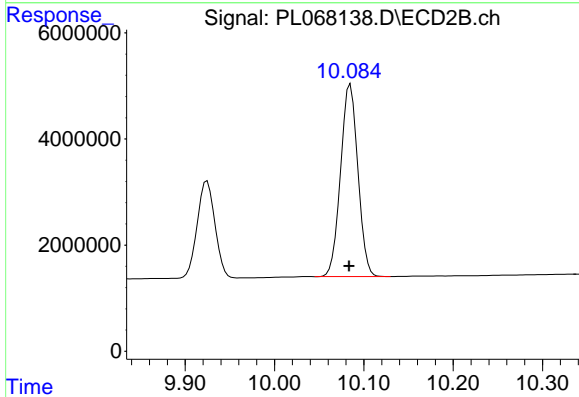


#20 Methoxychlor  
 R.T.: 9.925 min  
 Delta R.T.: 0.001 min  
 Response: 25279974  
 Conc: 49.53 ng/ml

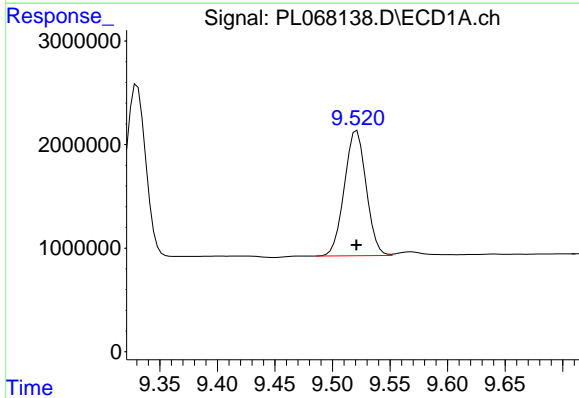


#21 Endrin ketone  
R.T.: 9.330 min  
Delta R.T.: 0.000 min  
Response: 20085684  
Conc: 44.02 ng/ml

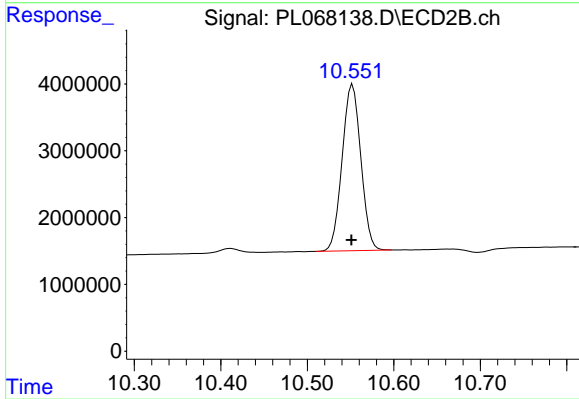
Instrument :  
ECD\_L  
ClientSampleId :  
ICVPL071521



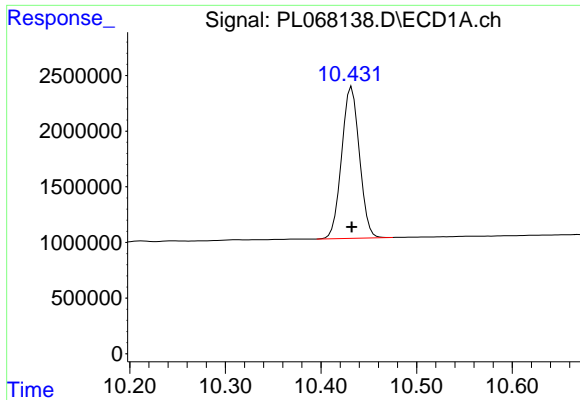
#21 Endrin ketone  
R.T.: 10.085 min  
Delta R.T.: 0.001 min  
Response: 48834549  
Conc: 49.39 ng/ml



#22 Mirex  
R.T.: 9.521 min  
Delta R.T.: 0.000 min  
Response: 16025899  
Conc: 44.75 ng/ml



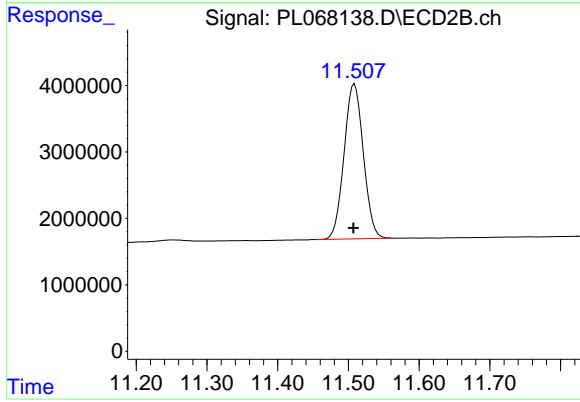
#22 Mirex  
R.T.: 10.552 min  
Delta R.T.: 0.001 min  
Response: 37172196  
Conc: 48.85 ng/ml



#28 Decachlorobiphenyl

R.T.: 10.432 min  
Delta R.T.: 0.000 min  
Response: 17641635  
Conc: 42.75 ng/ml

Instrument :  
ECD\_L  
ClientSampleId :  
ICVPL071521



#28 Decachlorobiphenyl

R.T.: 11.509 min  
Delta R.T.: 0.002 min  
Response: 44153851  
Conc: 49.08 ng/ml