

Data Path : Z:\pestpcbsrv\HPCHEM1\ECD_L\Data\PL071521\
 Data File : PL068143.D
 Signal(s) : Signal #1: ECD1A.ch Signal #2: ECD2B.ch
 Acq On : 14 Jul 2021 23:47
 Operator : AR\AJ
 Sample : PSTDCCC050
 Misc :
 ALS Vial : 7 Sample Multiplier: 1

Instrument :
 ECD_L
 ClientSampleId :
 PSTDCCC050

Integration File signal 1: autoint1.e
 Integration File signal 2: autoint2.e
 Quant Time: Jul 15 04:48:06 2021
 Quant Method : Z:\pestpcbsrv\HPCHEM1\ECD_L\methods\PL071521.M
 Quant Title : GC Extractables
 QLast Update : Thu Jul 15 04:04:16 2021
 Response via : Initial Calibration
 Integrator: ChemStation

Volume Inj. : 1 µl
 Signal #1 Phase : ZB-MR2 Signal #2 Phase: ZB-MR1
 Signal #1 Info : 30M x 0.32mm x0.2 Signal #2 Info : 30M x 0.32mm x0.5µm

	Compound	RT#1	RT#2	Resp#1	Resp#2	ng/ml	ng/ml

System Monitoring Compounds							
1)	SA Tetrachlo...	4.654	5.585	20967681	50128036	52.014	48.607
28)	SA Decachlor...	10.432	11.509	18179914	43604814	44.056	48.465
Target Compounds							
2)	A alpha-BHC	5.362	6.166	28225615	67810457	52.356	49.514
3)	MA gamma-BHC...	5.785	6.561	27582876	63742983	53.117	49.360
4)	MA Heptachlor	6.198	7.211	27975265	63878681	50.655	49.456
5)	MB Aldrin	6.523	7.582	24625111	58047583	48.972	48.155
6)	B beta-BHC	6.163	6.812	13149653	31080894	50.566	44.659
7)	B delta-BHC	6.425	7.080	25422722	61454836	51.003	50.444
8)	B Heptachlo...	7.100	8.047	22250407	55051770	46.571	49.524
9)	A Endosulfan I	7.504	8.453	20220721	49567083	45.309	48.642
10)	B gamma-Chl...	7.377	8.317	21859427	54333962	45.425	48.879
11)	B alpha-Chl...	7.448	8.397	21721691	54006785	45.392	48.456
12)	B 4,4'-DDE	7.661	8.584	19292469	49504603	44.633	48.773
13)	MA Dieldrin	7.790	8.742	20292160	50907472	44.630	48.838
14)	MA Endrin	8.081	8.982	18520513	42746889	42.999	48.211
15)	B Endosulfa...	8.391	9.215	17388912	42465391	43.947	47.963
16)	A 4,4'-DDD	8.246	9.123	16133850	41522843	43.869	48.460
17)	MA 4,4'-DDT	8.509	9.441	17445072	45476562	43.131	48.227
18)	B Endrin al...	8.580	9.349	13776029	34576942	44.189	47.409
19)	B Endosulfa...	8.810	9.586	17775209	42889545	43.155	47.972
20)	A Methoxychlor	9.103	9.925	10391033	24385990	43.844	47.782
21)	B Endrin ke...	9.330	10.085	19901325	47385161	43.616	47.926
22)	Mirex	9.521	10.552	16124065	36513515	45.019	47.982

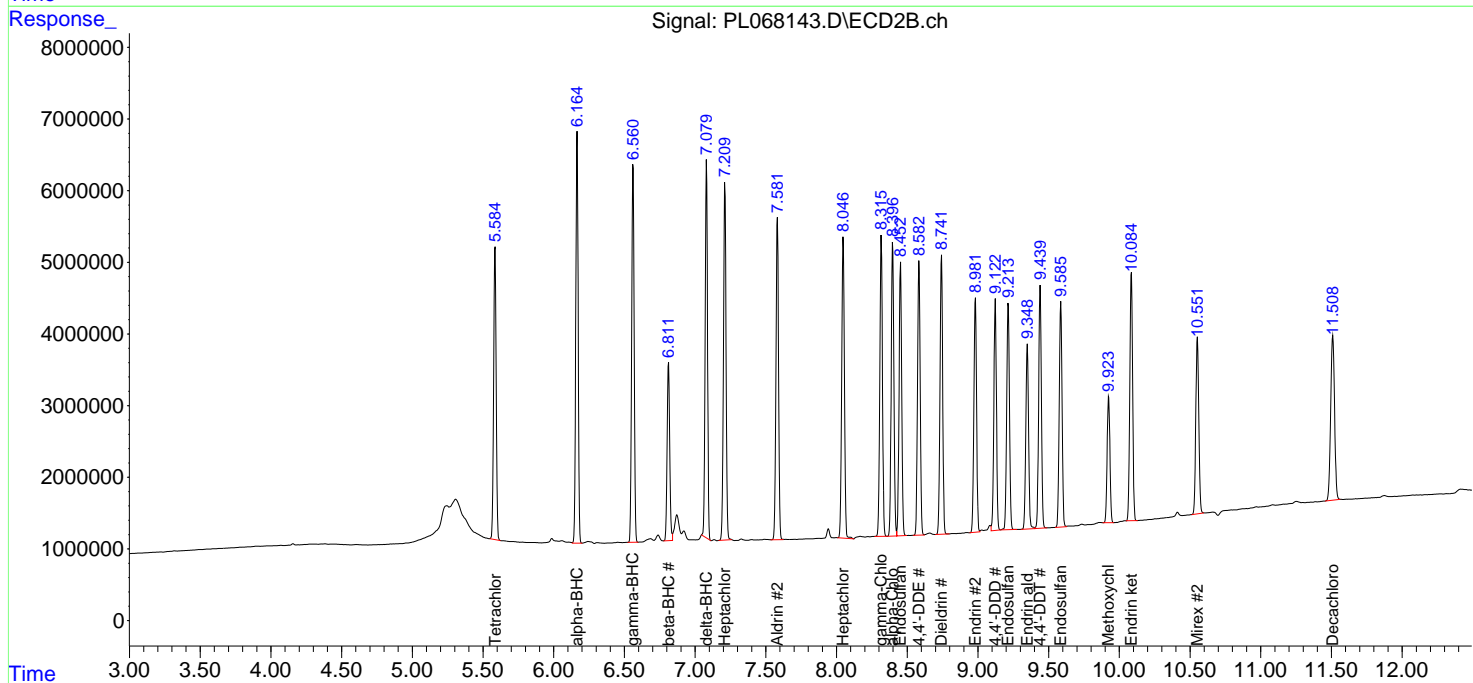
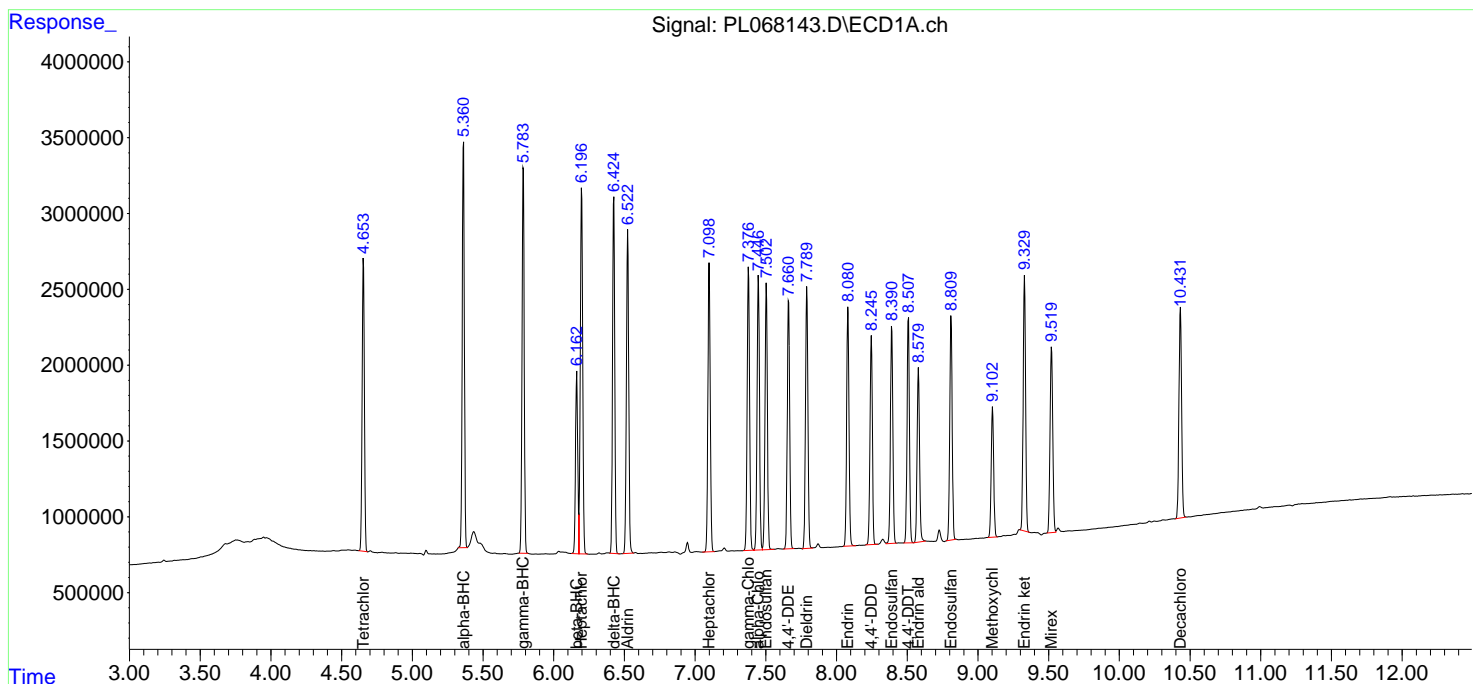
(f)=RT Delta > 1/2 Window (#)=Amounts differ by > 25% (m)=manual int.

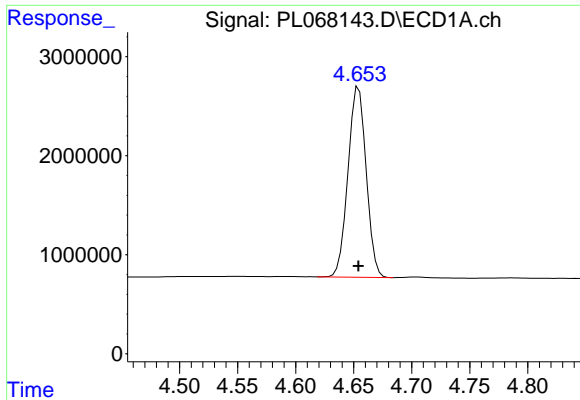
Data Path : Z:\pestpcbsrv\HPCHEM1\ECD_L\Data\PL071521\
 Data File : PL068143.D
 Signal(s) : Signal #1: ECD1A.ch Signal #2: ECD2B.ch
 Acq On : 14 Jul 2021 23:47
 Operator : AR\AJ
 Sample : PSTDCCC050
 Misc :
 ALS Vial : 7 Sample Multiplier: 1

Instrument :
 ECD_L
 Client Sampled :
 PSTDCCC050

Integration File signal 1: autoint1.e
 Integration File signal 2: autoint2.e
 Quant Time: Jul 15 04:48:06 2021
 Quant Method : Z:\pestpcbsrv\HPCHEM1\ECD_L\methods\PL071521.M
 Quant Title : GC Extractables
 QLast Update : Thu Jul 15 04:04:16 2021
 Response via : Initial Calibration
 Integrator: ChemStation

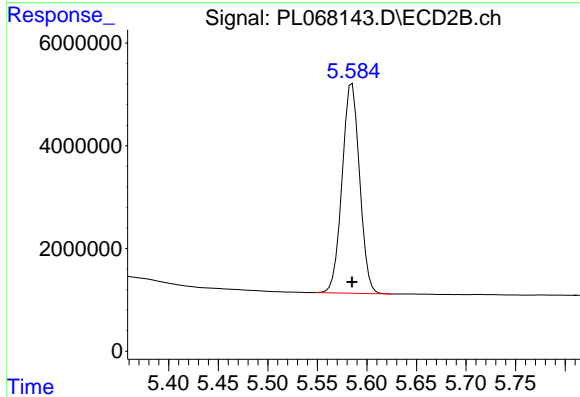
Volume Inj. : 1 µl
 Signal #1 Phase : ZB-MR2 Signal #2 Phase: ZB-MR1
 Signal #1 Info : 30M x 0.32mm x0.2 Signal #2 Info : 30M x 0.32mm x0.5µm



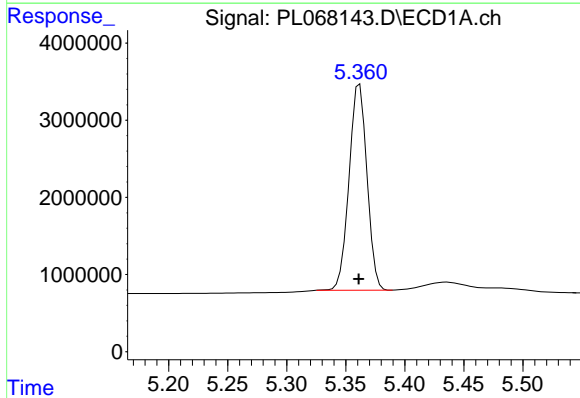


#1 Tetrachloro-m-xylene
 R.T.: 4.654 min
 Delta R.T.: 0.000 min
 Response: 20967681
 Conc: 52.01 ng/ml

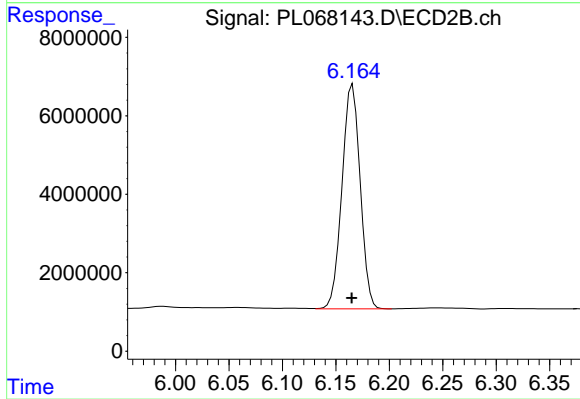
Instrument :
 ECD_L
 ClientSampleId :
 PSTDCCC050



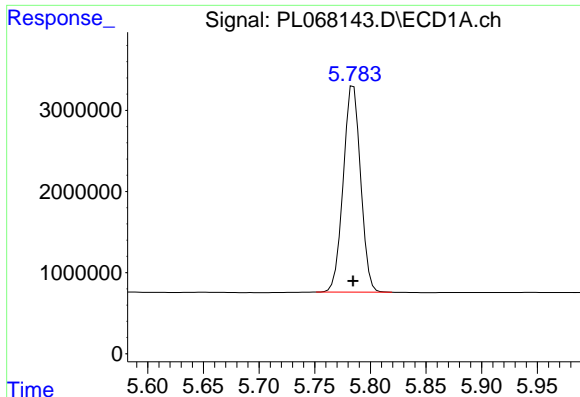
#1 Tetrachloro-m-xylene
 R.T.: 5.585 min
 Delta R.T.: 0.000 min
 Response: 50128036
 Conc: 48.61 ng/ml



#2 alpha-BHC
 R.T.: 5.362 min
 Delta R.T.: 0.000 min
 Response: 28225615
 Conc: 52.36 ng/ml

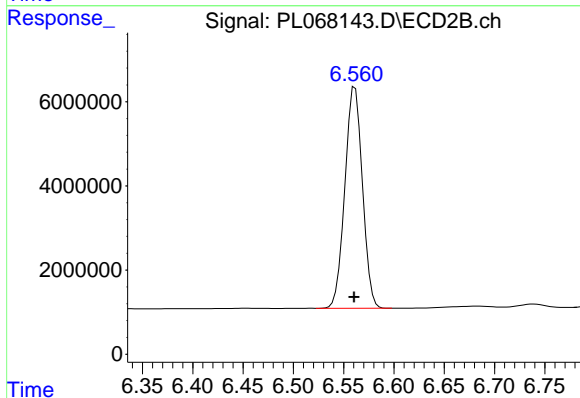


#2 alpha-BHC
 R.T.: 6.166 min
 Delta R.T.: 0.000 min
 Response: 67810457
 Conc: 49.51 ng/ml

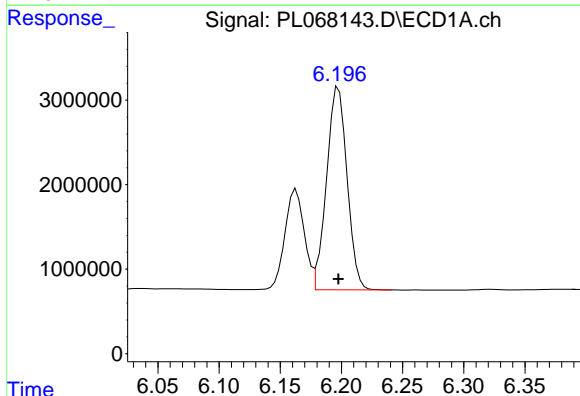


#3 gamma-BHC (Lindane)
 R.T.: 5.785 min
 Delta R.T.: 0.000 min
 Response: 27582876
 Conc: 53.12 ng/ml

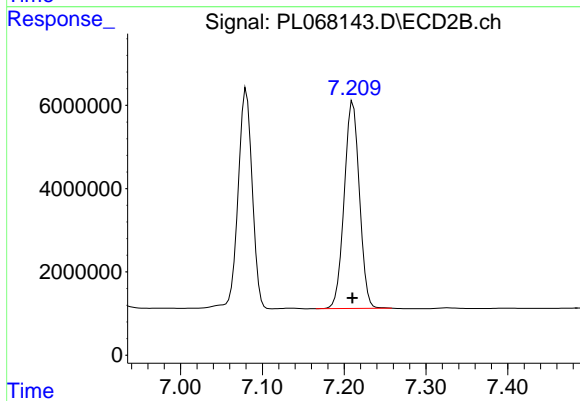
Instrument :
 ECD_L
 ClientSampleId :
 PSTDCCC050



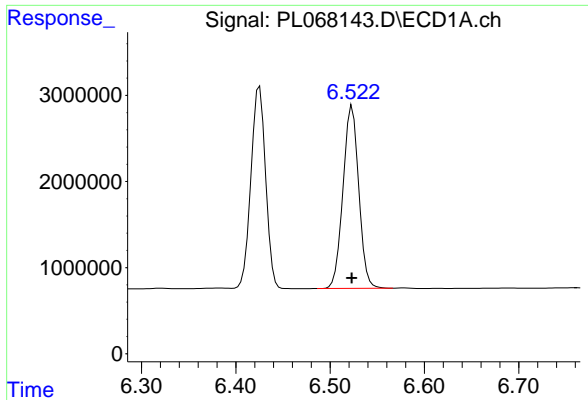
#3 gamma-BHC (Lindane)
 R.T.: 6.561 min
 Delta R.T.: 0.001 min
 Response: 63742983
 Conc: 49.36 ng/ml



#4 Heptachlor
 R.T.: 6.198 min
 Delta R.T.: 0.000 min
 Response: 27975265
 Conc: 50.65 ng/ml

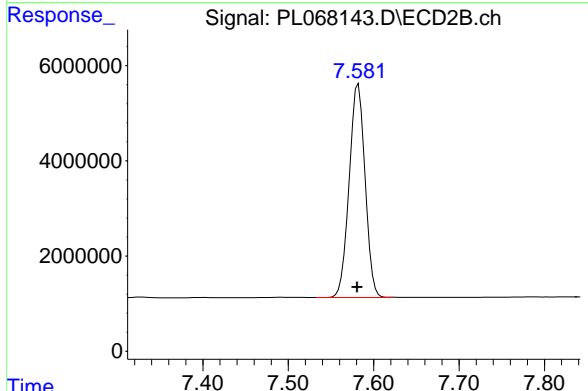


#4 Heptachlor
 R.T.: 7.211 min
 Delta R.T.: 0.000 min
 Response: 63878681
 Conc: 49.46 ng/ml

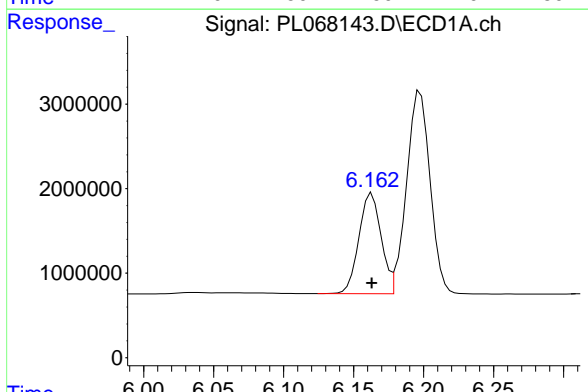


#5 Aldrin
 R.T.: 6.523 min
 Delta R.T.: 0.000 min
 Response: 24625111
 Conc: 48.97 ng/ml

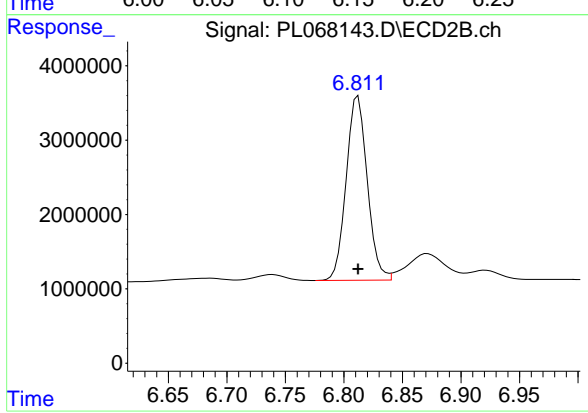
Instrument :
 ECD_L
ClientSampleId :
 PSTDCCC050



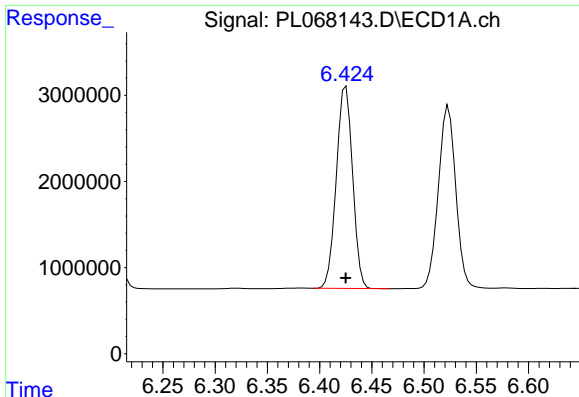
#5 Aldrin
 R.T.: 7.582 min
 Delta R.T.: 0.002 min
 Response: 58047583
 Conc: 48.15 ng/ml



#6 beta-BHC
 R.T.: 6.163 min
 Delta R.T.: 0.000 min
 Response: 13149653
 Conc: 50.57 ng/ml



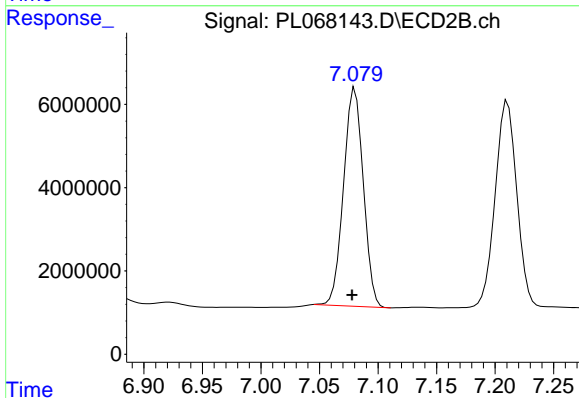
#6 beta-BHC
 R.T.: 6.812 min
 Delta R.T.: 0.000 min
 Response: 31080894
 Conc: 44.66 ng/ml



#7 delta-BHC

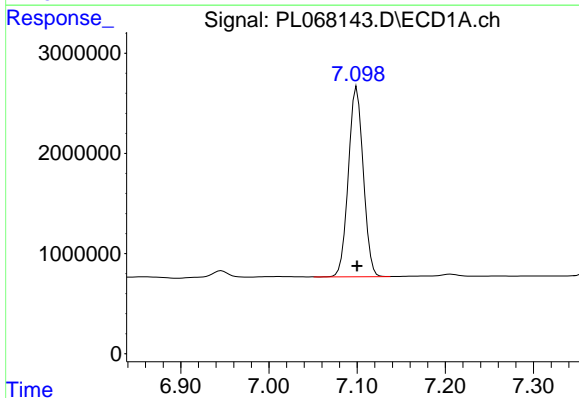
R.T.: 6.425 min
Delta R.T.: 0.000 min
Response: 25422722
Conc: 51.00 ng/ml

Instrument :
ECD_L
ClientSampleId :
PSTDCCC050



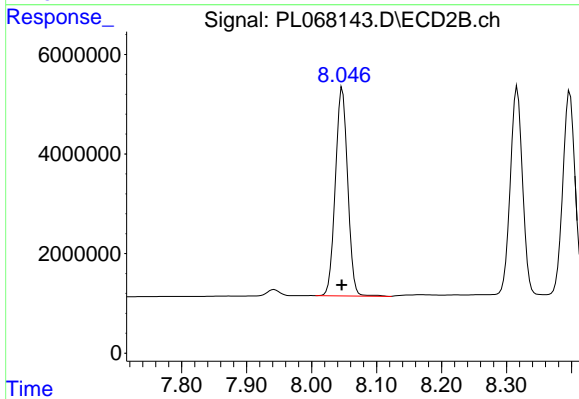
#7 delta-BHC

R.T.: 7.080 min
Delta R.T.: 0.002 min
Response: 61454836
Conc: 50.44 ng/ml



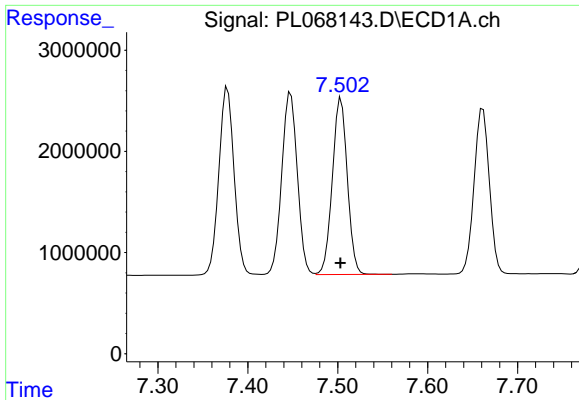
#8 Heptachlor epoxide

R.T.: 7.100 min
Delta R.T.: 0.000 min
Response: 22250407
Conc: 46.57 ng/ml



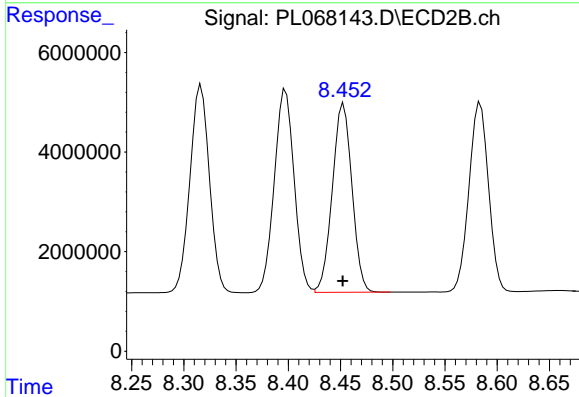
#8 Heptachlor epoxide

R.T.: 8.047 min
Delta R.T.: 0.000 min
Response: 55051770
Conc: 49.52 ng/ml

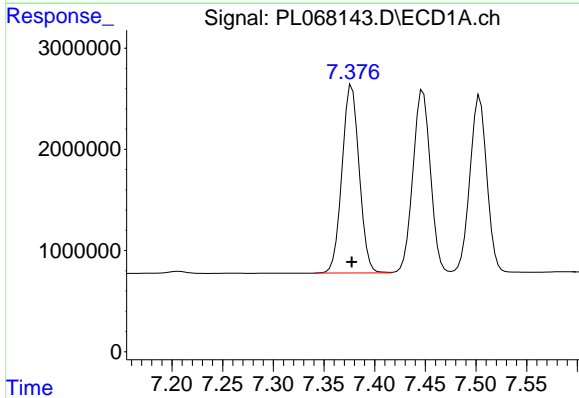


#9 Endosulfan I
 R.T.: 7.504 min
 Delta R.T.: 0.000 min
 Response: 20220721
 Conc: 45.31 ng/ml

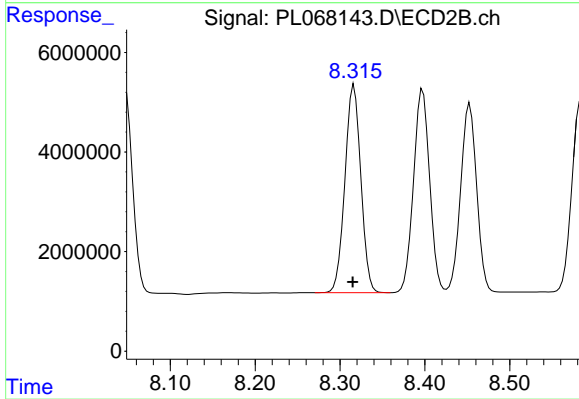
Instrument :
 ECD_L
 ClientSampleId :
 PSTDCCC050



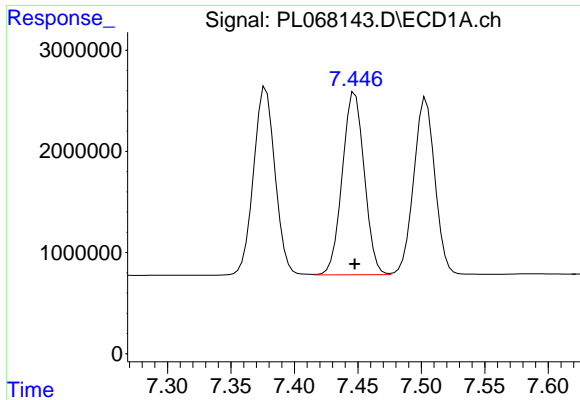
#9 Endosulfan I
 R.T.: 8.453 min
 Delta R.T.: 0.000 min
 Response: 49567083
 Conc: 48.64 ng/ml



#10 gamma-Chlordane
 R.T.: 7.377 min
 Delta R.T.: 0.000 min
 Response: 21859427
 Conc: 45.42 ng/ml

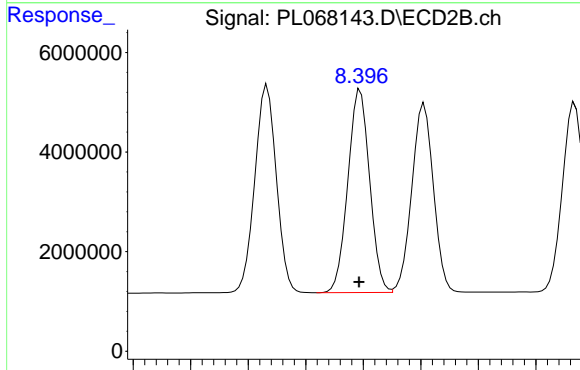


#10 gamma-Chlordane
 R.T.: 8.317 min
 Delta R.T.: 0.002 min
 Response: 54333962
 Conc: 48.88 ng/ml

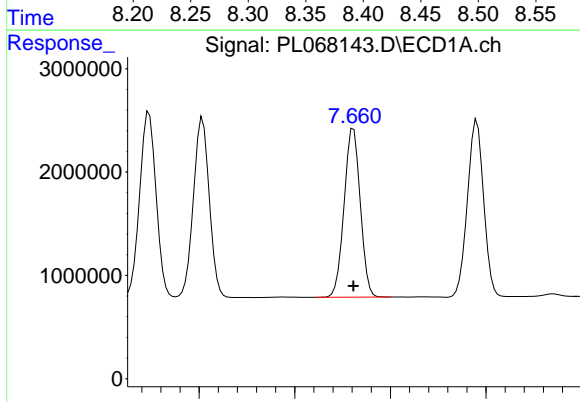


#11 alpha-Chlordane
R.T.: 7.448 min
Delta R.T.: 0.000 min
Response: 21721691
Conc: 45.39 ng/ml

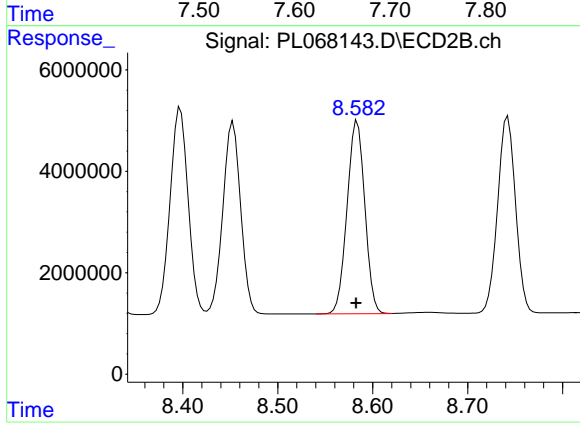
Instrument :
ECD_L
ClientSampleId :
PSTDCCC050



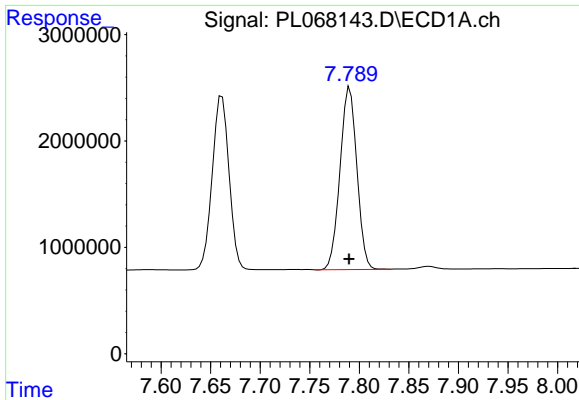
#11 alpha-Chlordane
R.T.: 8.397 min
Delta R.T.: 0.001 min
Response: 54006785
Conc: 48.46 ng/ml



#12 4,4'-DDE
R.T.: 7.661 min
Delta R.T.: 0.000 min
Response: 19292469
Conc: 44.63 ng/ml

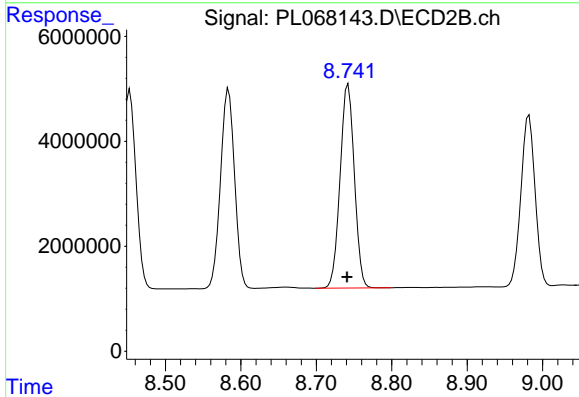


#12 4,4'-DDE
R.T.: 8.584 min
Delta R.T.: 0.002 min
Response: 49504603
Conc: 48.77 ng/ml

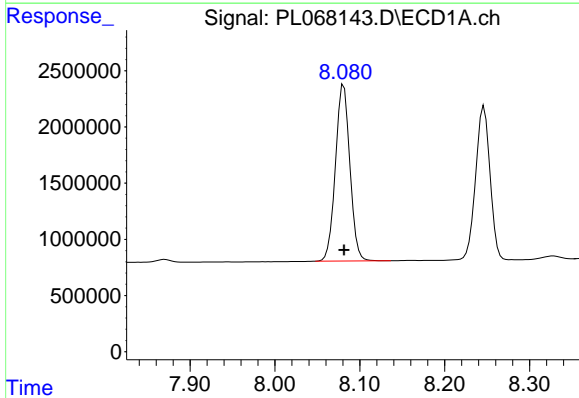


#13 Dieldrin
 R.T.: 7.790 min
 Delta R.T.: 0.000 min
 Response: 20292160
 Conc: 44.63 ng/ml

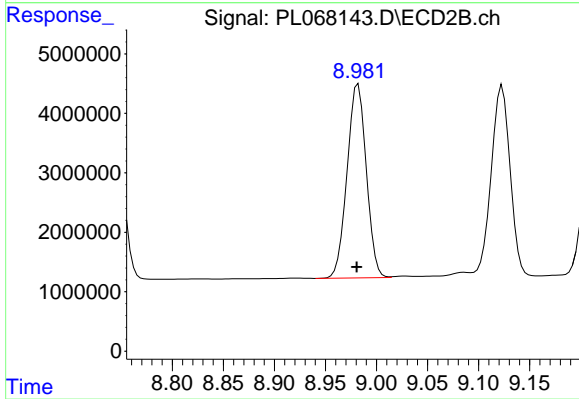
Instrument :
 ECD_L
 ClientSampleId :
 PSTDCCC050



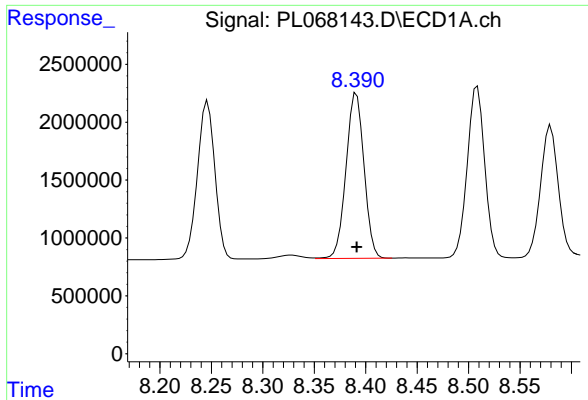
#13 Dieldrin
 R.T.: 8.742 min
 Delta R.T.: 0.001 min
 Response: 50907472
 Conc: 48.84 ng/ml



#14 Endrin
 R.T.: 8.081 min
 Delta R.T.: 0.000 min
 Response: 18520513
 Conc: 43.00 ng/ml

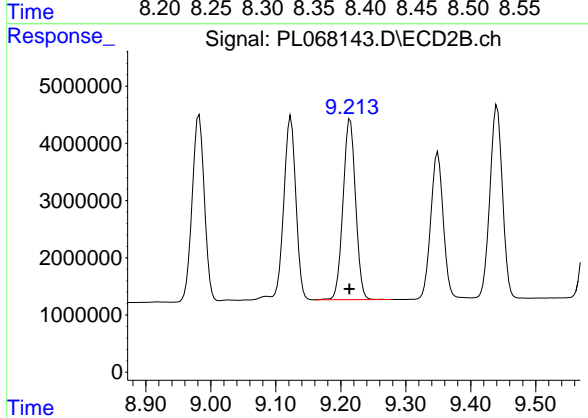


#14 Endrin
 R.T.: 8.982 min
 Delta R.T.: 0.002 min
 Response: 42746889
 Conc: 48.21 ng/ml

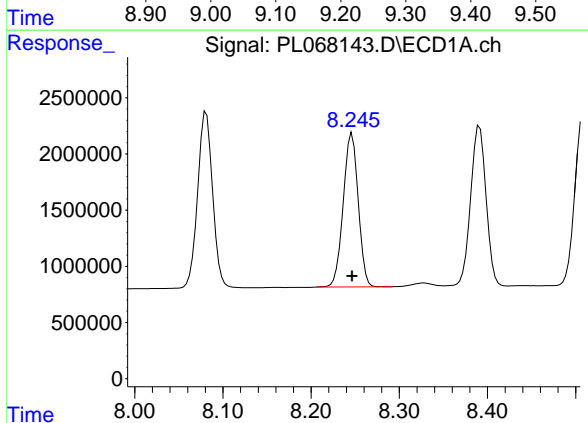


#15 Endosulfan II
R.T.: 8.391 min
Delta R.T.: 0.000 min
Response: 17388912
Conc: 43.95 ng/ml

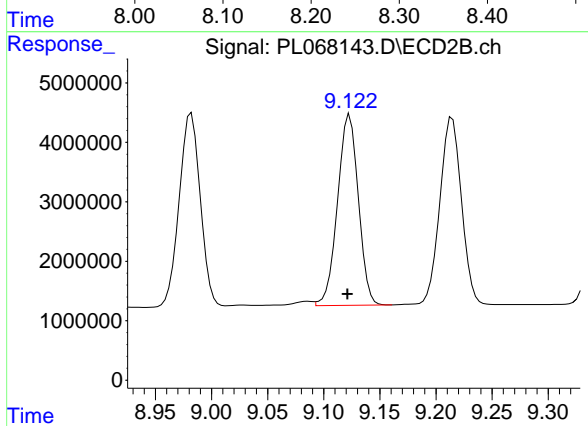
Instrument :
ECD_L
ClientSampled :
PSTDCCC050



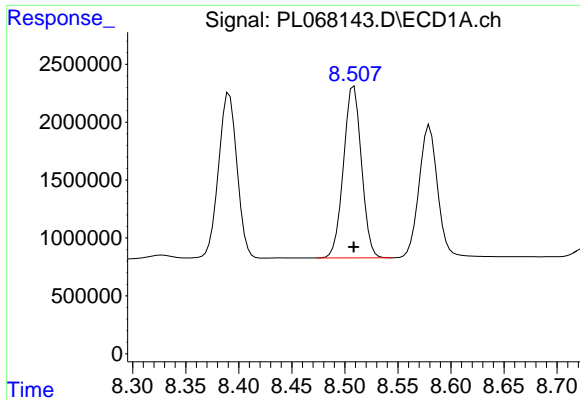
#15 Endosulfan II
R.T.: 9.215 min
Delta R.T.: 0.001 min
Response: 42465391
Conc: 47.96 ng/ml



#16 4,4'-DDD
R.T.: 8.246 min
Delta R.T.: 0.000 min
Response: 16133850
Conc: 43.87 ng/ml

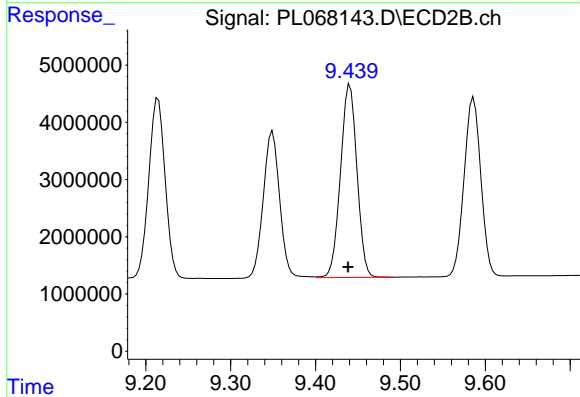


#16 4,4'-DDD
R.T.: 9.123 min
Delta R.T.: 0.002 min
Response: 41522843
Conc: 48.46 ng/ml

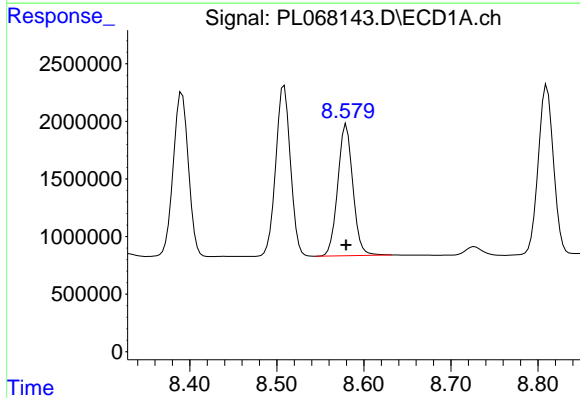


#17 4,4'-DDT
 R.T.: 8.509 min
 Delta R.T.: 0.000 min
 Response: 17445072
 Conc: 43.13 ng/ml

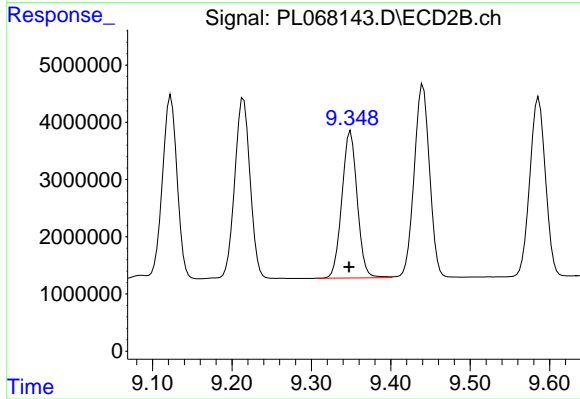
Instrument :
 ECD_L
 ClientSampleId :
 PSTDCCC050



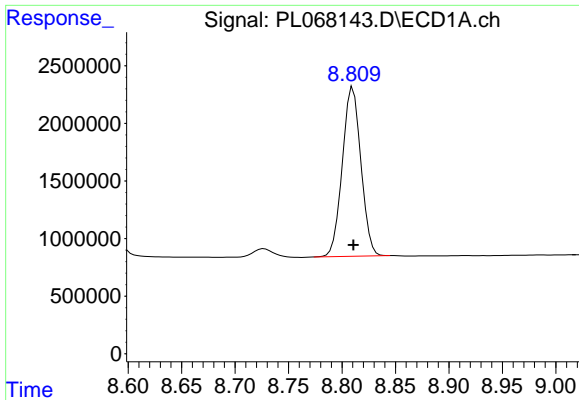
#17 4,4'-DDT
 R.T.: 9.441 min
 Delta R.T.: 0.002 min
 Response: 45476562
 Conc: 48.23 ng/ml



#18 Endrin aldehyde
 R.T.: 8.580 min
 Delta R.T.: 0.000 min
 Response: 13776029
 Conc: 44.19 ng/ml

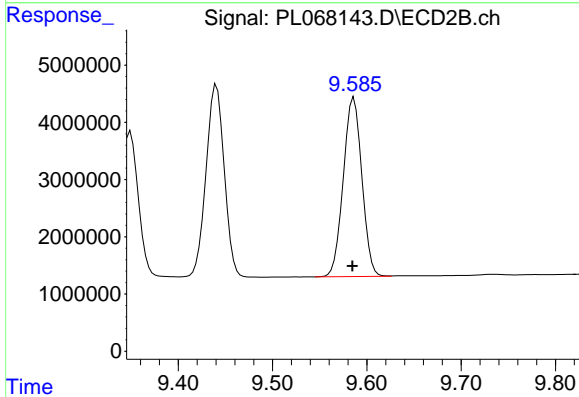


#18 Endrin aldehyde
 R.T.: 9.349 min
 Delta R.T.: 0.002 min
 Response: 34576942
 Conc: 47.41 ng/ml

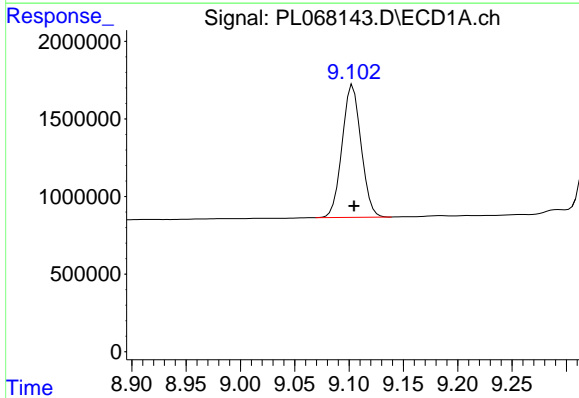


#19 Endosulfan Sulfate
 R.T.: 8.810 min
 Delta R.T.: 0.000 min
 Response: 17775209
 Conc: 43.16 ng/ml

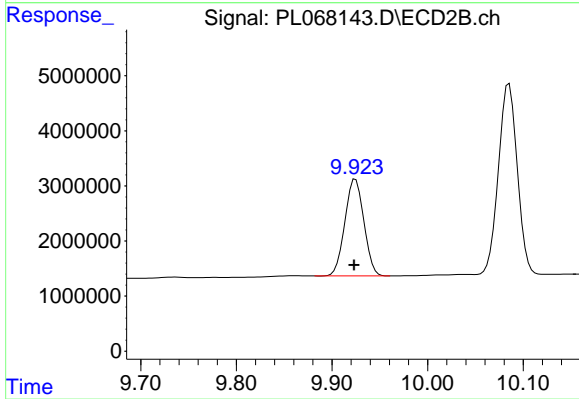
Instrument :
 ECD_L
 ClientSampleId :
 PSTDCCC050



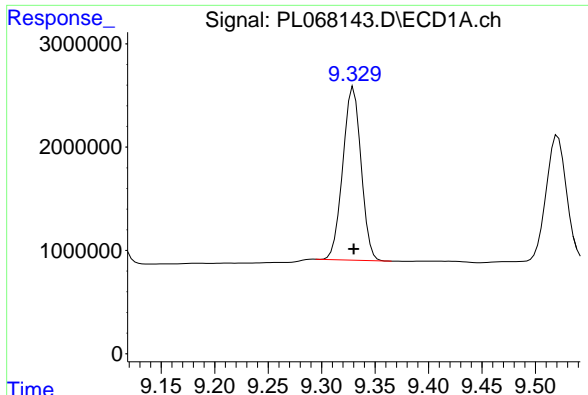
#19 Endosulfan Sulfate
 R.T.: 9.586 min
 Delta R.T.: 0.002 min
 Response: 42889545
 Conc: 47.97 ng/ml



#20 Methoxychlor
 R.T.: 9.103 min
 Delta R.T.: -0.001 min
 Response: 10391033
 Conc: 43.84 ng/ml



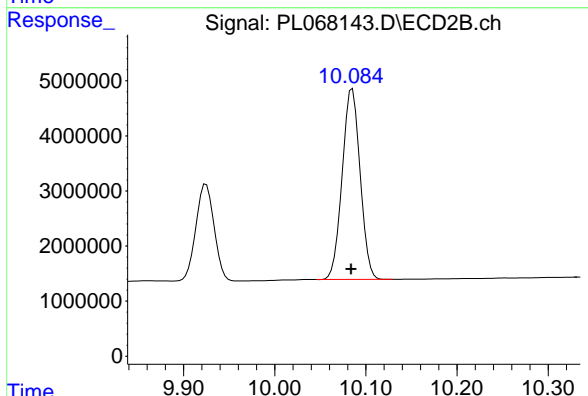
#20 Methoxychlor
 R.T.: 9.925 min
 Delta R.T.: 0.002 min
 Response: 24385990
 Conc: 47.78 ng/ml



#21 Endrin ketone

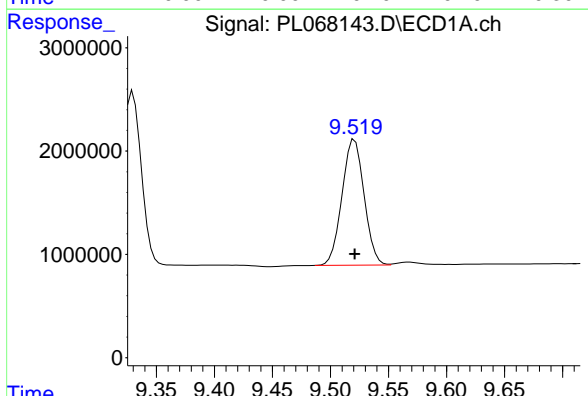
R.T.: 9.330 min
 Delta R.T.: 0.000 min
 Response: 19901325
 Conc: 43.62 ng/ml

Instrument :
 ECD_L
 ClientSampleId :
 PSTDCCC050



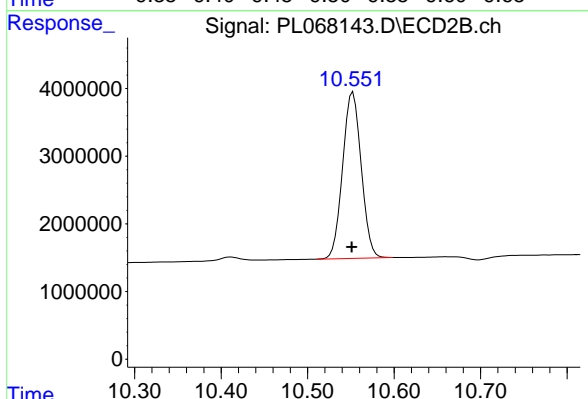
#21 Endrin ketone

R.T.: 10.085 min
 Delta R.T.: 0.002 min
 Response: 47385161
 Conc: 47.93 ng/ml



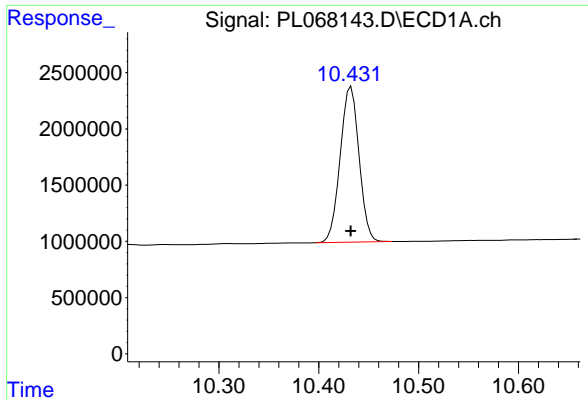
#22 Mirex

R.T.: 9.521 min
 Delta R.T.: 0.000 min
 Response: 16124065
 Conc: 45.02 ng/ml



#22 Mirex

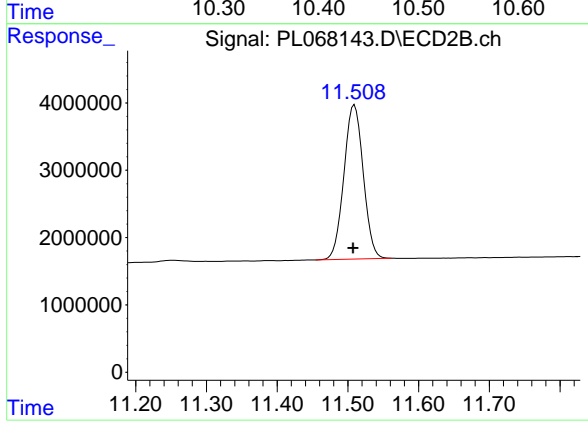
R.T.: 10.552 min
 Delta R.T.: 0.001 min
 Response: 36513515
 Conc: 47.98 ng/ml



#28 Decachlorobiphenyl

R.T.: 10.432 min
Delta R.T.: 0.000 min
Response: 18179914
Conc: 44.06 ng/ml

Instrument :
ECD_L
ClientSampleId :
PSTDCCC050



#28 Decachlorobiphenyl

R.T.: 11.509 min
Delta R.T.: 0.002 min
Response: 43604814
Conc: 48.47 ng/ml