

Data Path : Z:\pestpcbsrv\HPCHEM1\ECD_L\Data\PL071521\
 Data File : PL068149.D
 Signal(s) : Signal #1: ECD1A.ch Signal #2: ECD2B.ch
 Acq On : 15 Jul 2021 01:43
 Operator : AR\AJ
 Sample : M3012-02MSD
 Misc :
 ALS Vial : 28 Sample Multiplier: 1

Instrument :
 ECD_L
 ClientSampleId :
 PS-TP1MSD

Integration File signal 1: autoint1.e
 Integration File signal 2: autoint2.e
 Quant Time: Jul 15 04:49:39 2021
 Quant Method : Z:\pestpcbsrv\HPCHEM1\ECD_L\methods\PL071521.M
 Quant Title : GC Extractables
 QLast Update : Thu Jul 15 04:04:16 2021
 Response via : Initial Calibration
 Integrator: ChemStation

Volume Inj. : 1 µl
 Signal #1 Phase : ZB-MR2 Signal #2 Phase: ZB-MR1
 Signal #1 Info : 30M x 0.32mm x0.2 Signal #2 Info : 30M x 0.32mm x0.5µm

| Compound | RT#1 | RT#2 | Resp#1 | Resp#2 | ng/ml | ng/ml |
|-----------------------------|--------|--------|----------|----------|--------|--------|
| ----- | | | | | | |
| System Monitoring Compounds | | | | | | |
| 1) SA Tetrachlo... | 4.654 | 5.585 | 8537098 | 21652268 | 21.178 | 20.995 |
| 28) SA Decachlor... | 10.432 | 11.509 | 9251998 | 19587236 | 22.421 | 21.771 |
| Target Compounds | | | | | | |
| 2) A alpha-BHC | 5.362 | 6.165 | 29821417 | 73810661 | 55.316 | 53.895 |
| 3) MA gamma-BHC... | 5.785 | 6.561 | 28089541 | 68721190 | 54.093 | 53.215 |
| 4) MA Heptachlor | 6.198 | 7.210 | 27821128 | 68285008 | 50.376 | 52.867 |
| 5) MB Aldrin | 6.524 | 7.581 | 25222230 | 61413056 | 50.160 | 50.947 |
| 6) B beta-BHC | 6.163 | 6.812 | 14154583 | 34643519 | 54.431 | 49.778 |
| 7) B delta-BHC | 6.425 | 7.080 | 16549055 | 42360393 | 33.201 | 34.771 |
| 8) B Heptachlo... | 7.100 | 8.047 | 24640856 | 59614024 | 51.574 | 53.628 |
| 9) A Endosulfan I | 7.503 | 8.453 | 23084716 | 54940946 | 51.727 | 53.916 |
| 10) B gamma-Chl... | 7.378 | 8.316 | 24802748 | 59516872 | 51.541 | 53.542 |
| 11) B alpha-Chl... | 7.448 | 8.397 | 24603711 | 59299521 | 51.414 | 53.204 |
| 12) B 4,4'-DDE | 7.661 | 8.583 | 22593382 | 55846949 | 52.269 | 55.022 |
| 13) MA Dieldrin | 7.791 | 8.742 | 23796278 | 58065457 | 52.337 | 55.705 |
| 14) MA Endrin | 8.082 | 8.982 | 22026368 | 50096627 | 51.139 | 56.501 |
| 15) B Endosulfa... | 8.392 | 9.214 | 21367360 | 49864189 | 54.001 | 56.320 |
| 16) A 4,4'-DDD | 8.247 | 9.123 | 18979964 | 47159390 | 51.608 | 55.038 |
| 17) MA 4,4'-DDT | 8.510 | 9.440 | 20606735 | 48180991 | 50.948 | 51.095 |
| 18) B Endrin al... | 8.580 | 9.349 | 18707203 | 43732503 | 60.007 | 59.962 |
| 19) B Endosulfa... | 8.811 | 9.586 | 21081204 | 47081936 | 51.181 | 52.662 |
| 20) A Methoxychlor | 9.104 | 9.925 | 12817570 | 27464644 | 54.082 | 53.814 |
| 21) B Endrin ke... | 9.330 | 10.085 | 25501286 | 55664306 | 55.888 | 56.300 |
| 22) Mirex | 9.521 | 10.552 | 19283008 | 40284967 | 53.839 | 52.938 |
| ----- | | | | | | |

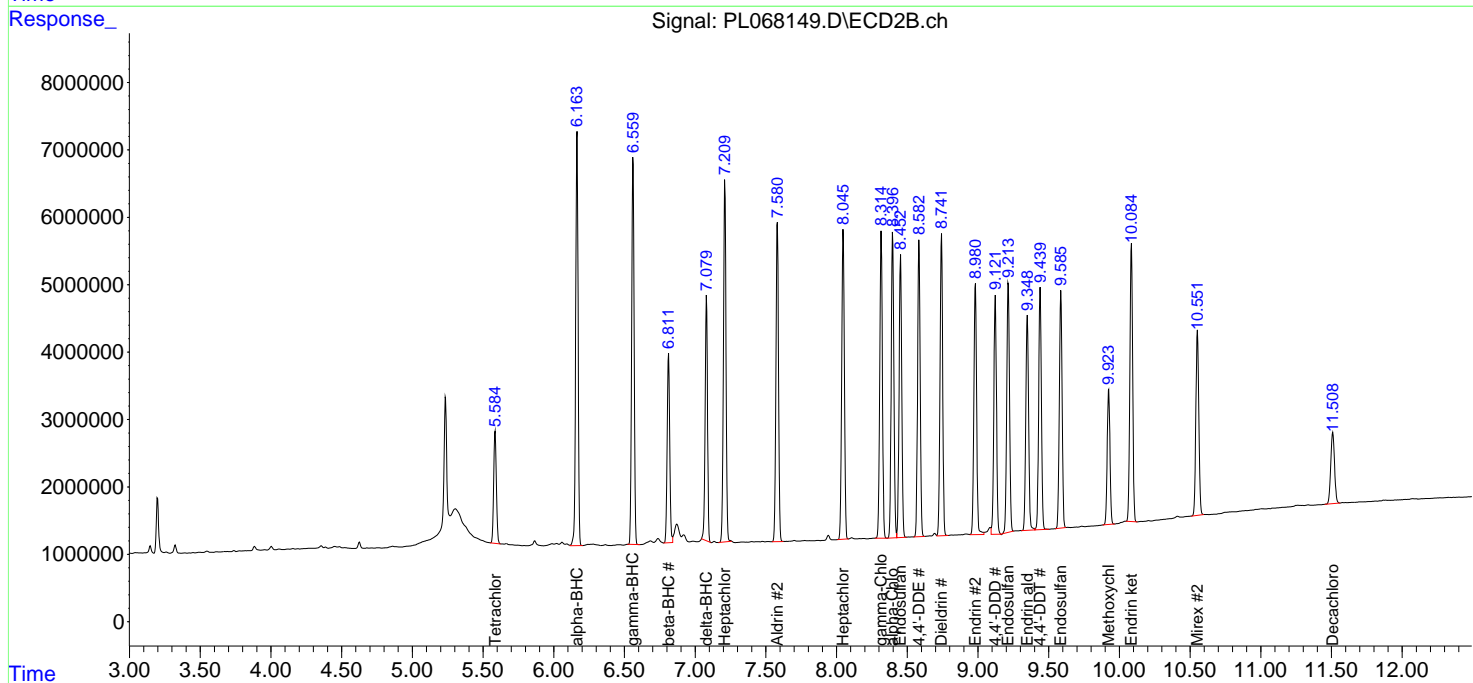
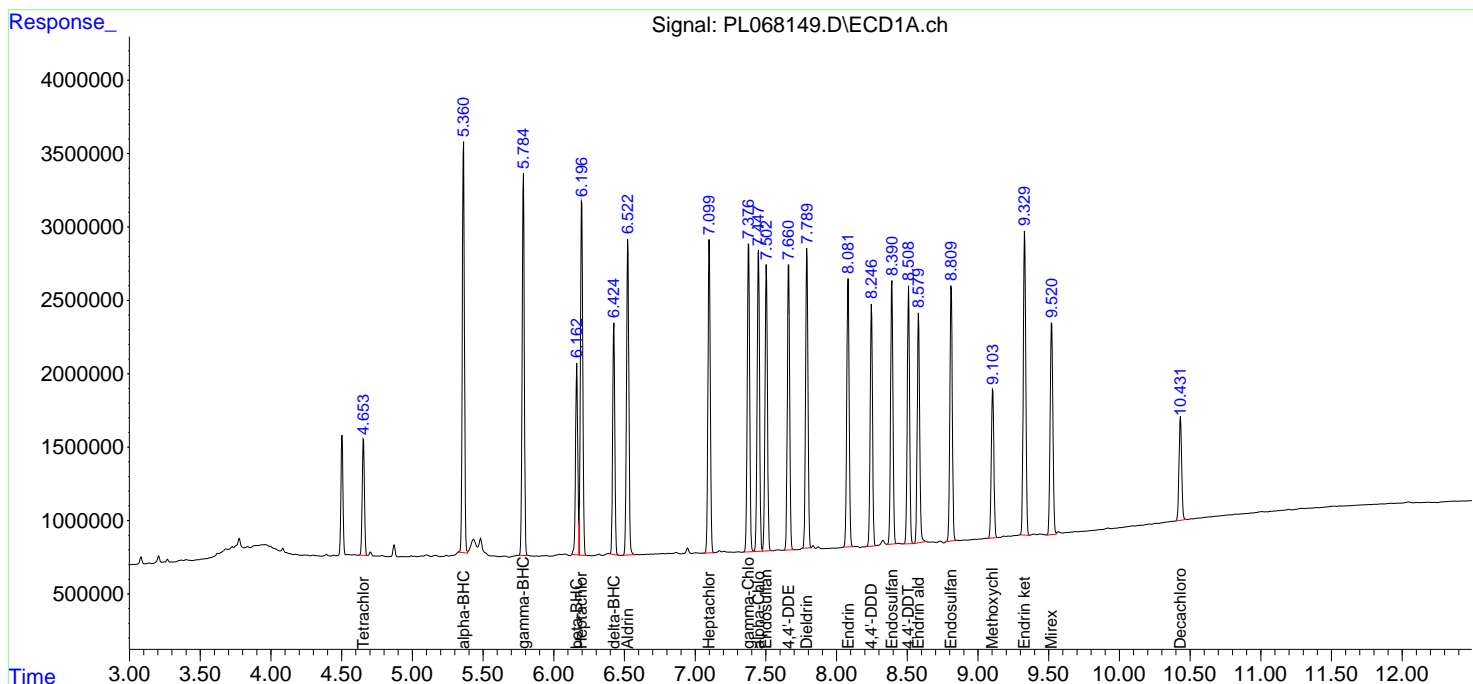
(f)=RT Delta > 1/2 Window (#)=Amounts differ by > 25% (m)=manual int.

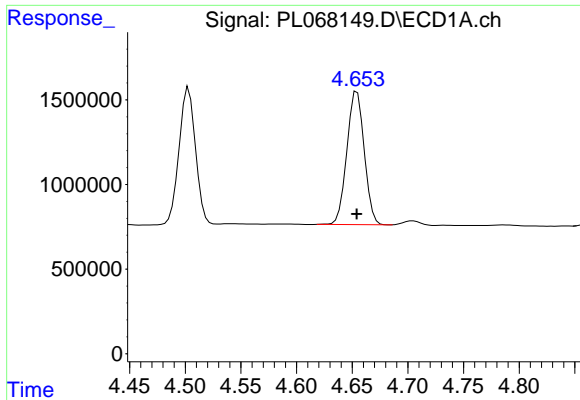
Data Path : Z:\pestpcbsrv\HPCHEM1\ECD_L\Data\PL071521\
 Data File : PL068149.D
 Signal(s) : Signal #1: ECD1A.ch Signal #2: ECD2B.ch
 Acq On : 15 Jul 2021 01:43
 Operator : AR\AJ
 Sample : M3012-02MSD
 Misc :
 ALS Vial : 28 Sample Multiplier: 1

Instrument :
 ECD_L
 Client Sampled :
 PS-TP1MSD

Integration File signal 1: autoint1.e
 Integration File signal 2: autoint2.e
 Quant Time: Jul 15 04:49:39 2021
 Quant Method : Z:\pestpcbsrv\HPCHEM1\ECD_L\methods\PL071521.M
 Quant Title : GC Extractables
 QLast Update : Thu Jul 15 04:04:16 2021
 Response via : Initial Calibration
 Integrator: ChemStation

Volume Inj. : 1 µl
 Signal #1 Phase : ZB-MR2 Signal #2 Phase: ZB-MR1
 Signal #1 Info : 30M x 0.32mm x0.2 Signal #2 Info : 30M x 0.32mm x0.5µm

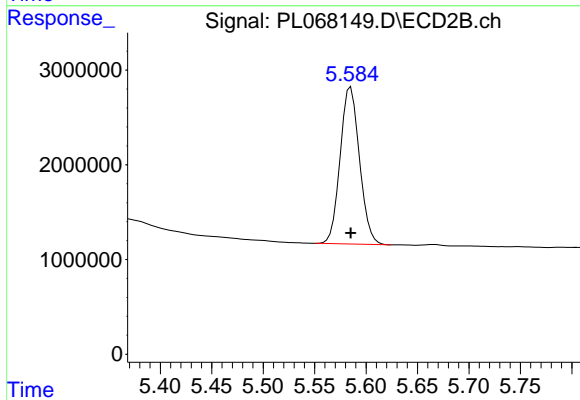




#1 Tetrachloro-m-xylene

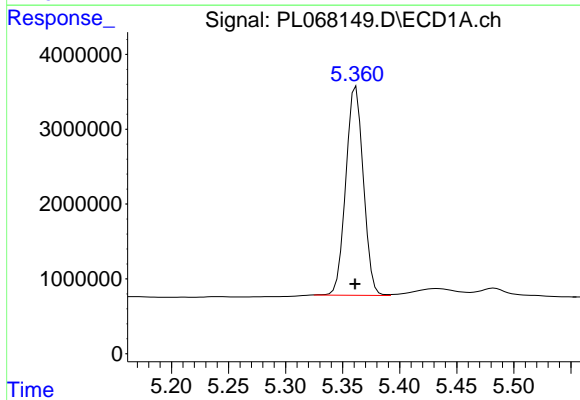
R.T.: 4.654 min
Delta R.T.: 0.000 min
Response: 8537098
Conc: 21.18 ng/ml

Instrument :
ECD_L
ClientSampleId :
PS-TP1MSD



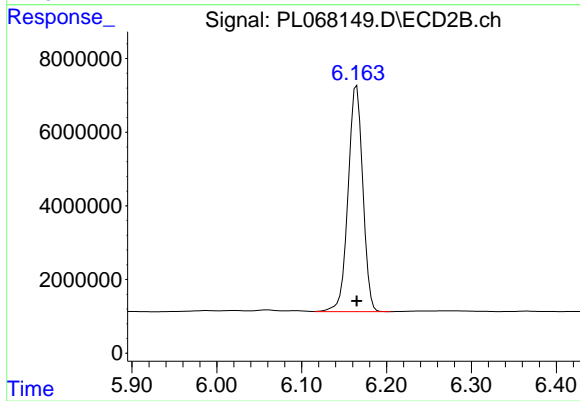
#1 Tetrachloro-m-xylene

R.T.: 5.585 min
Delta R.T.: 0.000 min
Response: 21652268
Conc: 21.00 ng/ml



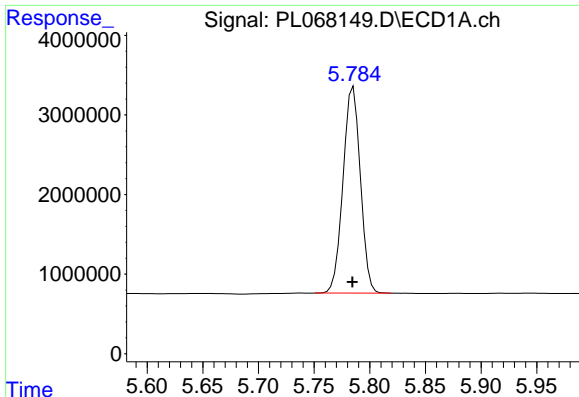
#2 alpha-BHC

R.T.: 5.362 min
Delta R.T.: 0.000 min
Response: 29821417
Conc: 55.32 ng/ml



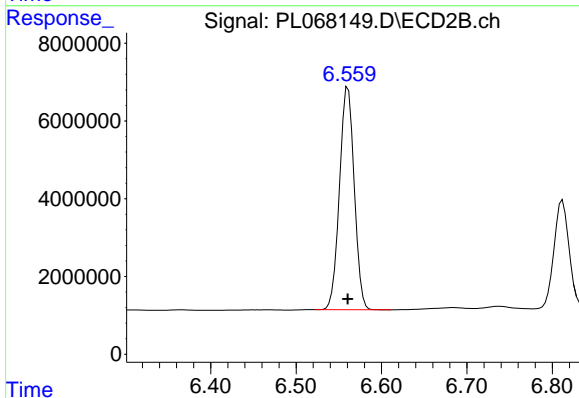
#2 alpha-BHC

R.T.: 6.165 min
Delta R.T.: 0.000 min
Response: 73810661
Conc: 53.89 ng/ml

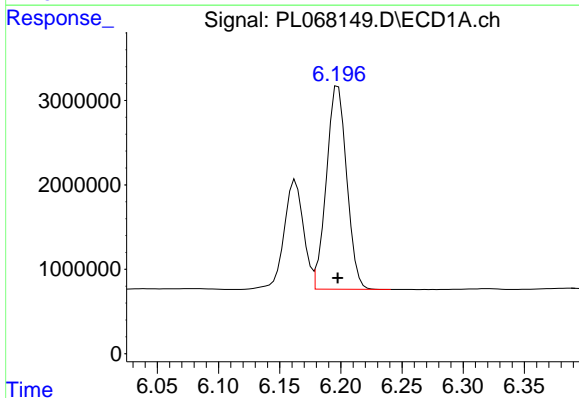


#3 gamma-BHC (Lindane)
 R.T.: 5.785 min
 Delta R.T.: 0.000 min
 Response: 28089541
 Conc: 54.09 ng/ml

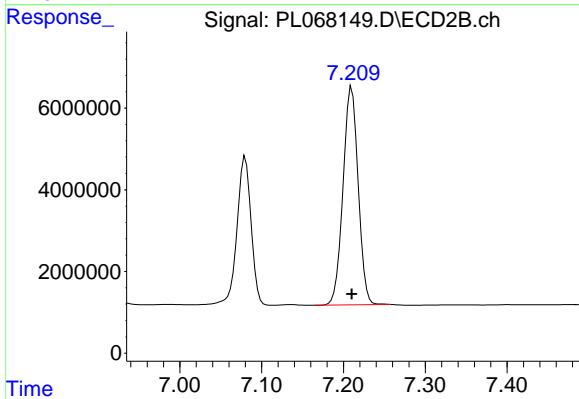
Instrument :
 ECD_L
 ClientSampleId :
 PS-TP1MSD



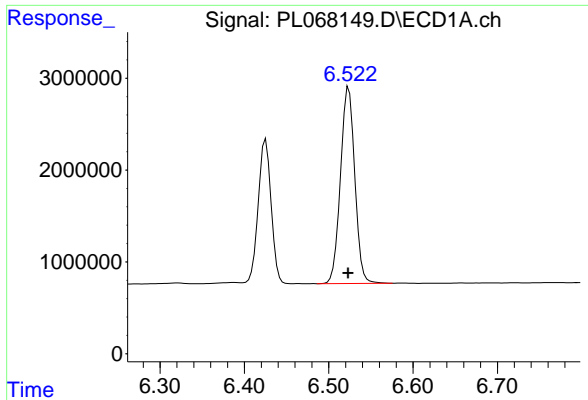
#3 gamma-BHC (Lindane)
 R.T.: 6.561 min
 Delta R.T.: 0.000 min
 Response: 68721190
 Conc: 53.21 ng/ml



#4 Heptachlor
 R.T.: 6.198 min
 Delta R.T.: 0.000 min
 Response: 27821128
 Conc: 50.38 ng/ml

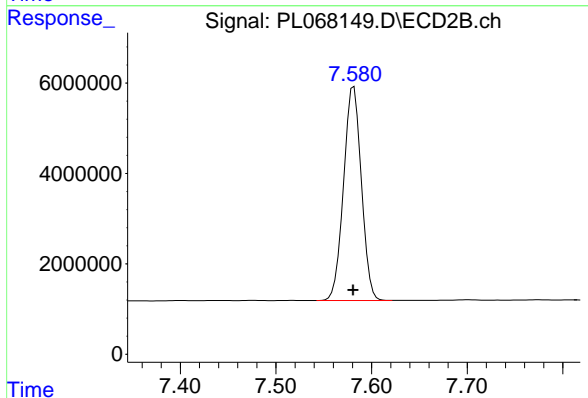


#4 Heptachlor
 R.T.: 7.210 min
 Delta R.T.: 0.000 min
 Response: 68285008
 Conc: 52.87 ng/ml

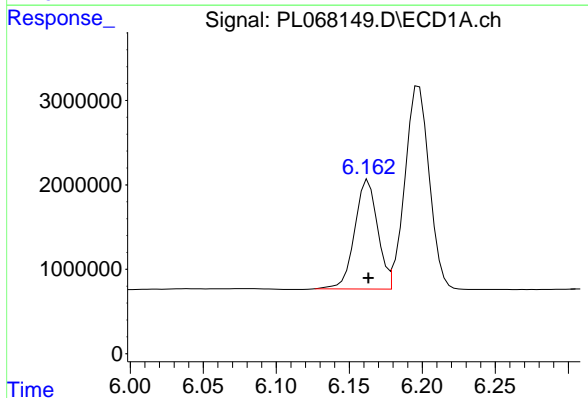


#5 Aldrin
 R.T.: 6.524 min
 Delta R.T.: 0.000 min
 Response: 2522230
 Conc: 50.16 ng/ml

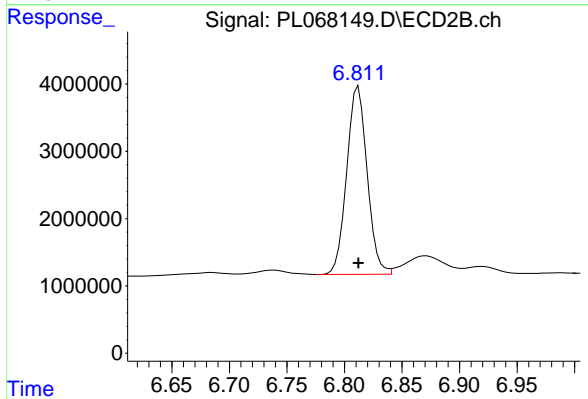
Instrument :
 ECD_L
 ClientSampled :
 PS-TP1MSD



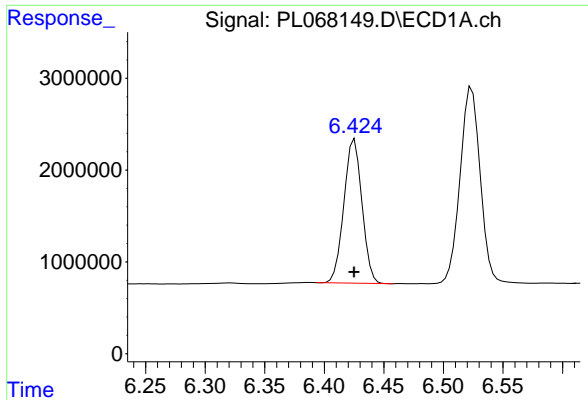
#5 Aldrin
 R.T.: 7.581 min
 Delta R.T.: 0.000 min
 Response: 61413056
 Conc: 50.95 ng/ml



#6 beta-BHC
 R.T.: 6.163 min
 Delta R.T.: 0.000 min
 Response: 14154583
 Conc: 54.43 ng/ml

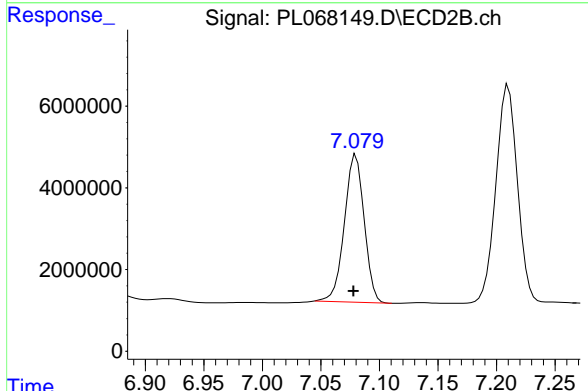


#6 beta-BHC
 R.T.: 6.812 min
 Delta R.T.: 0.000 min
 Response: 34643519
 Conc: 49.78 ng/ml

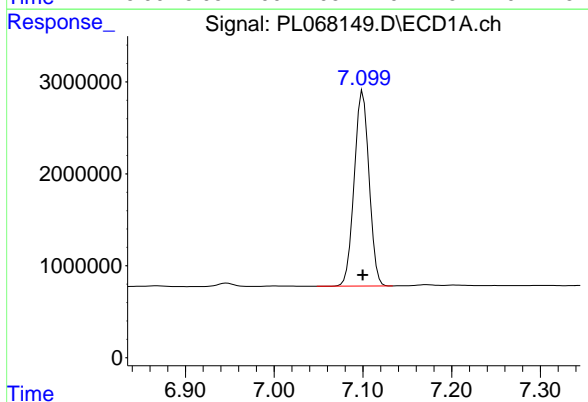


#7 delta-BHC
 R.T.: 6.425 min
 Delta R.T.: 0.000 min
 Response: 16549055
 Conc: 33.20 ng/ml

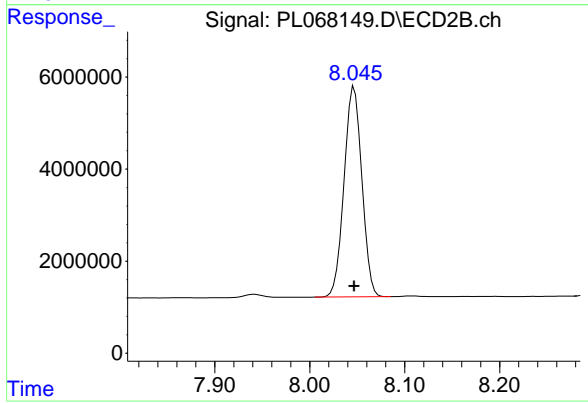
Instrument :
 ECD_L
 ClientSampleId :
 PS-TP1MSD



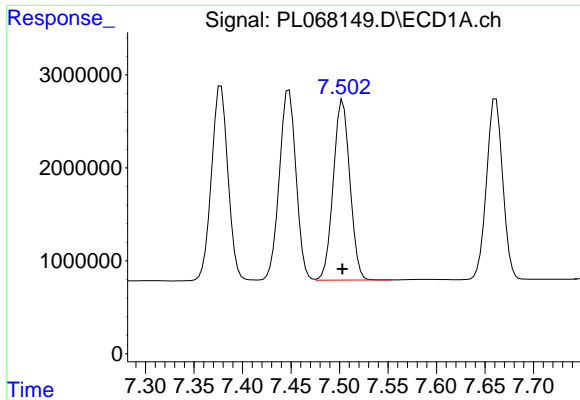
#7 delta-BHC
 R.T.: 7.080 min
 Delta R.T.: 0.002 min
 Response: 42360393
 Conc: 34.77 ng/ml



#8 Heptachlor epoxide
 R.T.: 7.100 min
 Delta R.T.: 0.000 min
 Response: 24640856
 Conc: 51.57 ng/ml



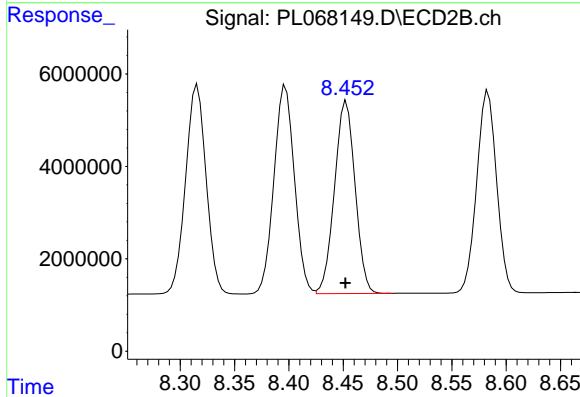
#8 Heptachlor epoxide
 R.T.: 8.047 min
 Delta R.T.: 0.000 min
 Response: 59614024
 Conc: 53.63 ng/ml



#9 Endosulfan I

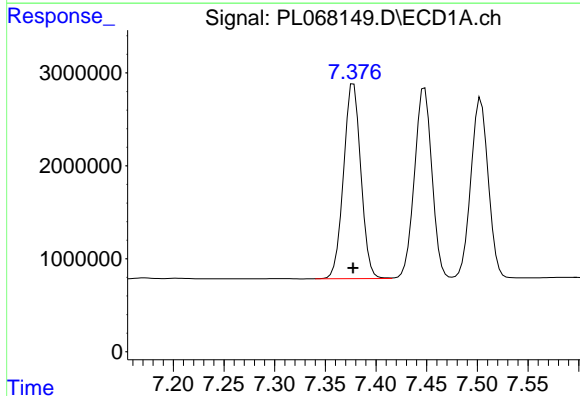
R.T.: 7.503 min
 Delta R.T.: 0.000 min
 Response: 23084716
 Conc: 51.73 ng/ml

Instrument :
 ECD_L
 ClientSampleId :
 PS-TP1MSD



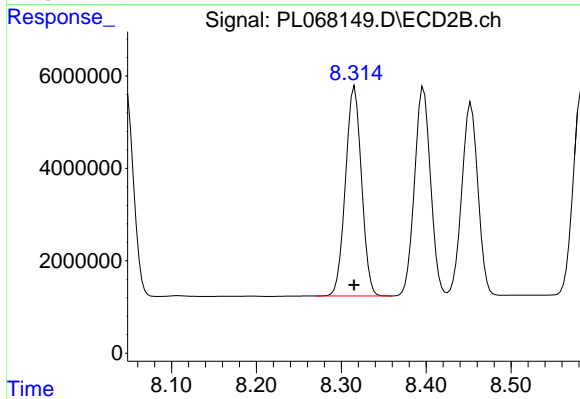
#9 Endosulfan I

R.T.: 8.453 min
 Delta R.T.: 0.000 min
 Response: 54940946
 Conc: 53.92 ng/ml



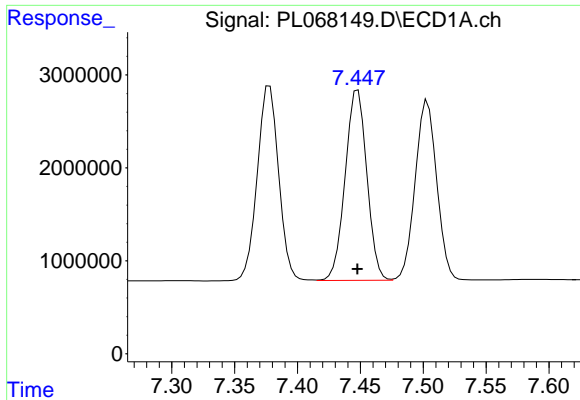
#10 gamma-Chlordane

R.T.: 7.378 min
 Delta R.T.: 0.000 min
 Response: 24802748
 Conc: 51.54 ng/ml



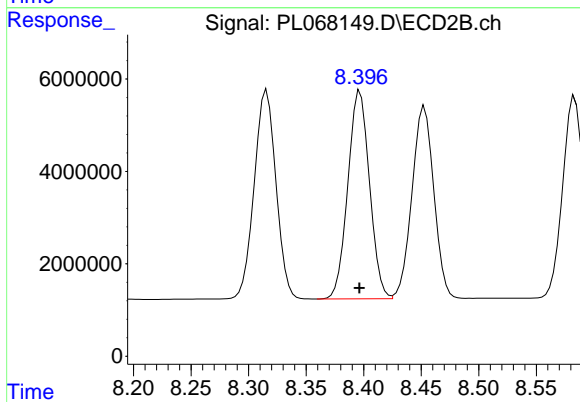
#10 gamma-Chlordane

R.T.: 8.316 min
 Delta R.T.: 0.000 min
 Response: 59516872
 Conc: 53.54 ng/ml

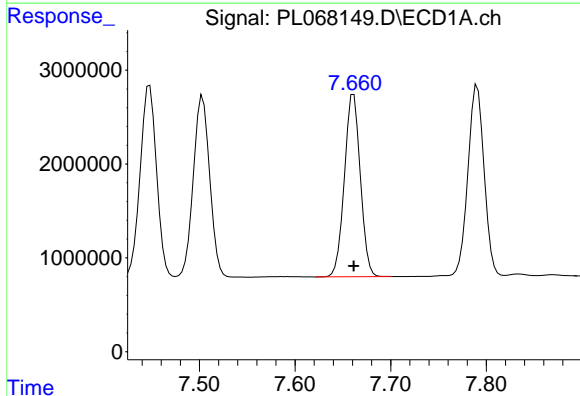


#11 alpha-Chlordane
R.T.: 7.448 min
Delta R.T.: 0.000 min
Response: 24603711
Conc: 51.41 ng/ml

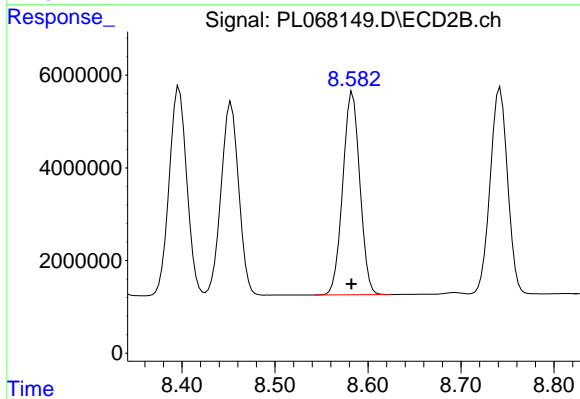
Instrument :
ECD_L
ClientSampleId :
PS-TP1MSD



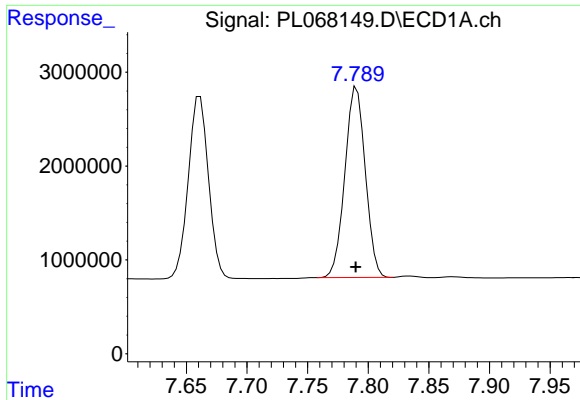
#11 alpha-Chlordane
R.T.: 8.397 min
Delta R.T.: 0.000 min
Response: 59299521
Conc: 53.20 ng/ml



#12 4,4'-DDE
R.T.: 7.661 min
Delta R.T.: 0.000 min
Response: 22593382
Conc: 52.27 ng/ml

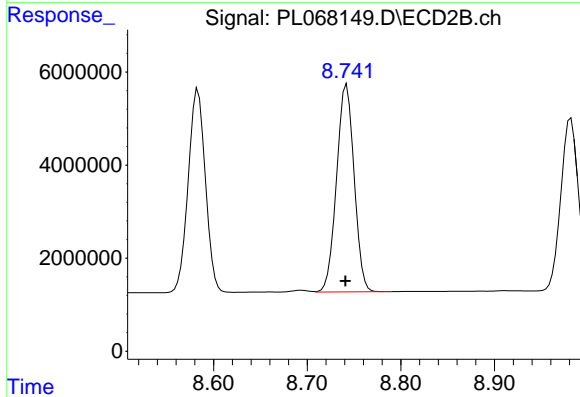


#12 4,4'-DDE
R.T.: 8.583 min
Delta R.T.: 0.001 min
Response: 55846949
Conc: 55.02 ng/ml

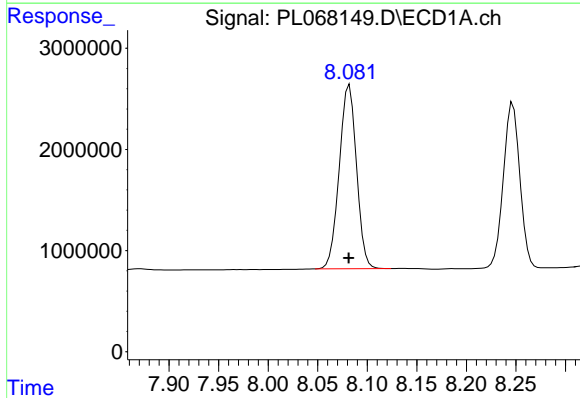


#13 Dieldrin
 R.T.: 7.791 min
 Delta R.T.: 0.000 min
 Response: 23796278
 Conc: 52.34 ng/ml

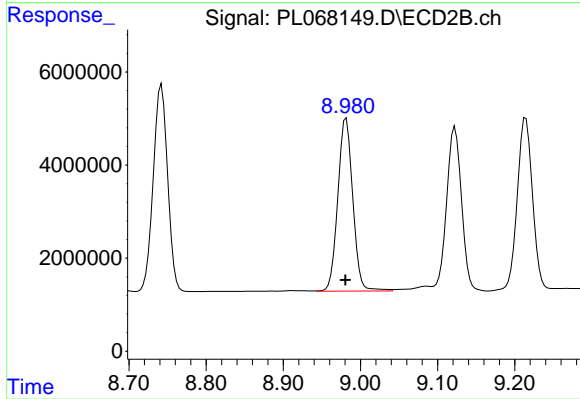
Instrument :
 ECD_L
 ClientSampleId :
 PS-TP1MSD



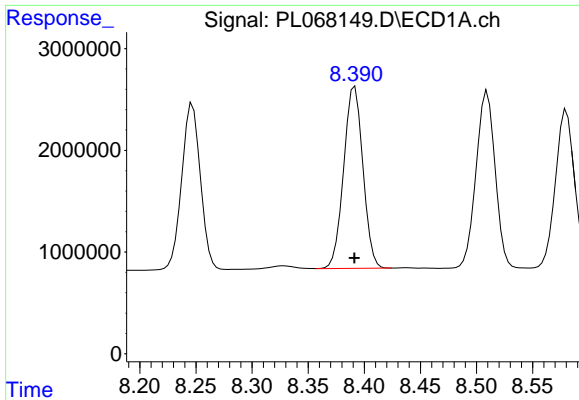
#13 Dieldrin
 R.T.: 8.742 min
 Delta R.T.: 0.001 min
 Response: 58065457
 Conc: 55.70 ng/ml



#14 Endrin
 R.T.: 8.082 min
 Delta R.T.: 0.000 min
 Response: 22026368
 Conc: 51.14 ng/ml

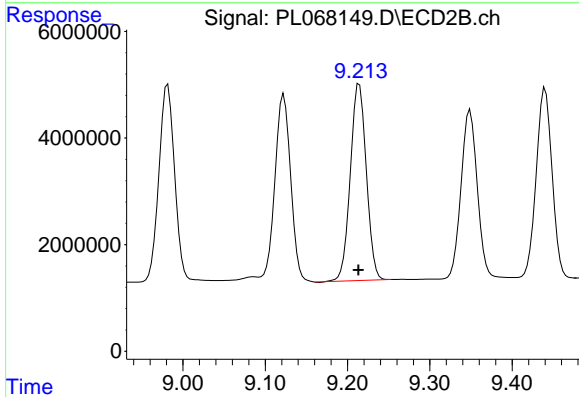


#14 Endrin
 R.T.: 8.982 min
 Delta R.T.: 0.001 min
 Response: 50096627
 Conc: 56.50 ng/ml

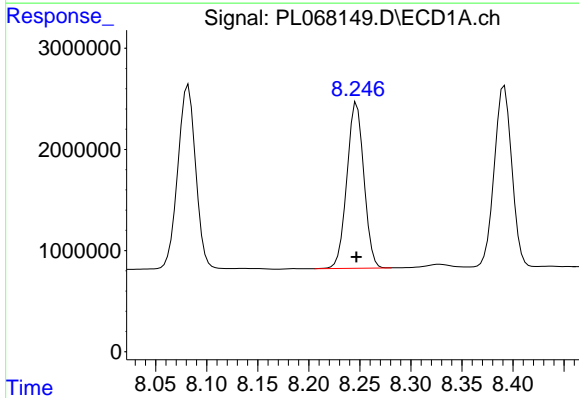


#15 Endosulfan II
 R.T.: 8.392 min
 Delta R.T.: 0.000 min
 Response: 21367360
 Conc: 54.00 ng/ml

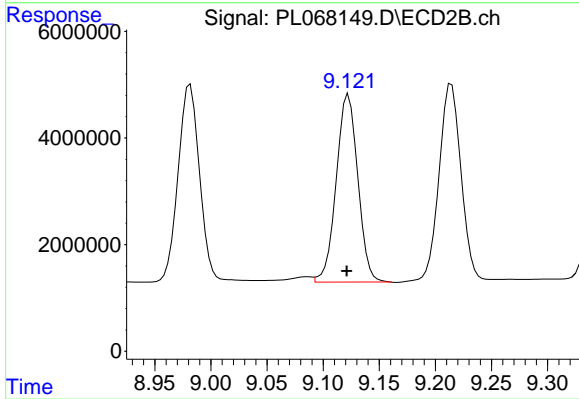
Instrument :
 ECD_L
 ClientSampleId :
 PS-TP1MSD



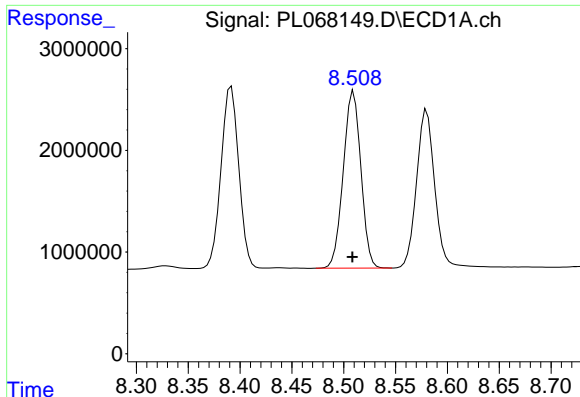
#15 Endosulfan II
 R.T.: 9.214 min
 Delta R.T.: 0.001 min
 Response: 49864189
 Conc: 56.32 ng/ml



#16 4,4'-DDD
 R.T.: 8.247 min
 Delta R.T.: 0.000 min
 Response: 18979964
 Conc: 51.61 ng/ml



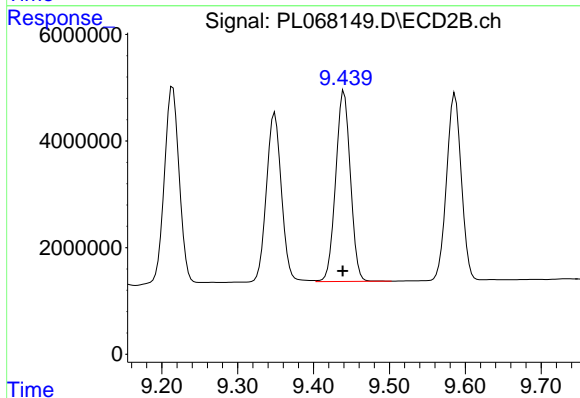
#16 4,4'-DDD
 R.T.: 9.123 min
 Delta R.T.: 0.002 min
 Response: 47159390
 Conc: 55.04 ng/ml



#17 4,4'-DDT

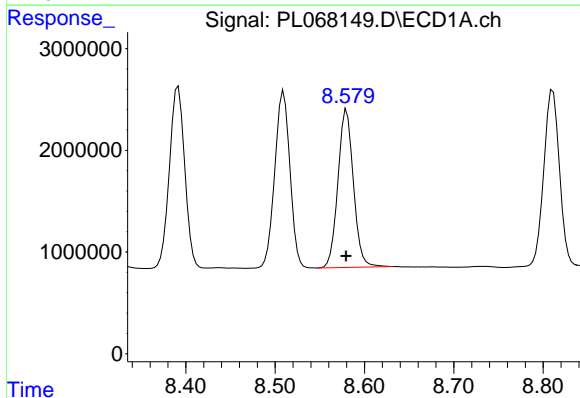
R.T.: 8.510 min
 Delta R.T.: 0.001 min
 Response: 20606735
 Conc: 50.95 ng/ml

Instrument :
 ECD_L
 ClientSampleId :
 PS-TP1MSD



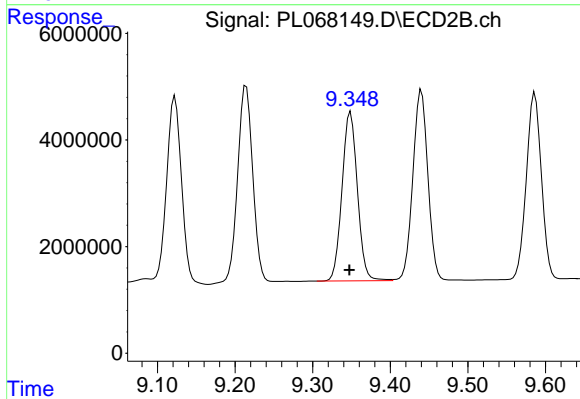
#17 4,4'-DDT

R.T.: 9.440 min
 Delta R.T.: 0.002 min
 Response: 48180991
 Conc: 51.09 ng/ml



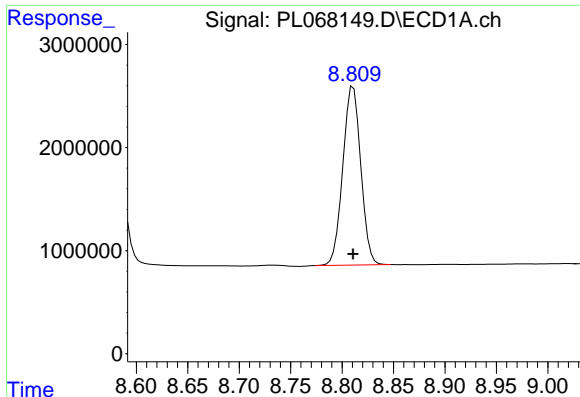
#18 Endrin aldehyde

R.T.: 8.580 min
 Delta R.T.: 0.000 min
 Response: 18707203
 Conc: 60.01 ng/ml



#18 Endrin aldehyde

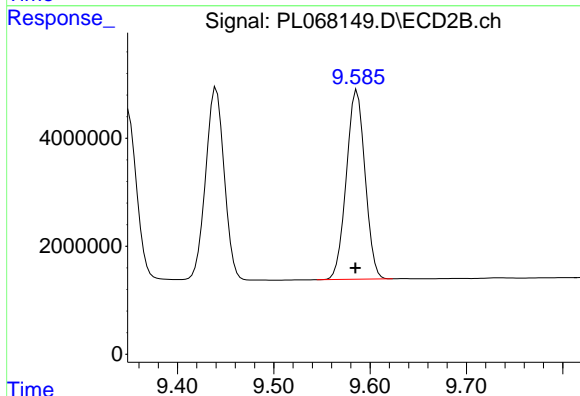
R.T.: 9.349 min
 Delta R.T.: 0.002 min
 Response: 43732503
 Conc: 59.96 ng/ml



#19 Endosulfan Sulfate

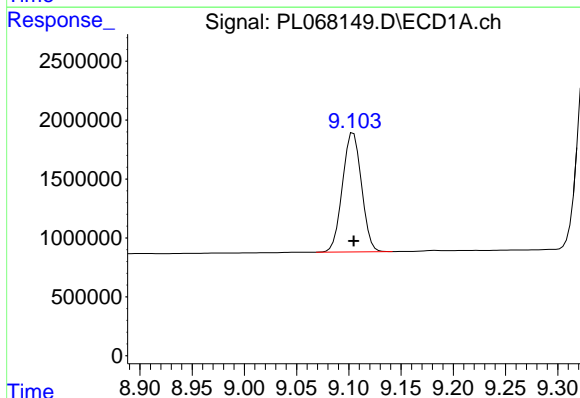
R.T.: 8.811 min
 Delta R.T.: 0.000 min
 Response: 21081204
 Conc: 51.18 ng/ml

Instrument :
 ECD_L
 ClientSampleId :
 PS-TP1MSD



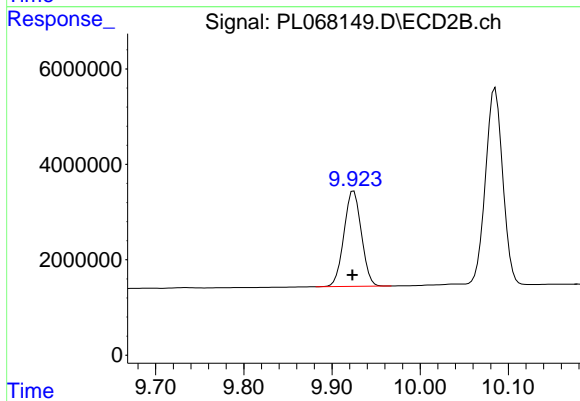
#19 Endosulfan Sulfate

R.T.: 9.586 min
 Delta R.T.: 0.002 min
 Response: 47081936
 Conc: 52.66 ng/ml



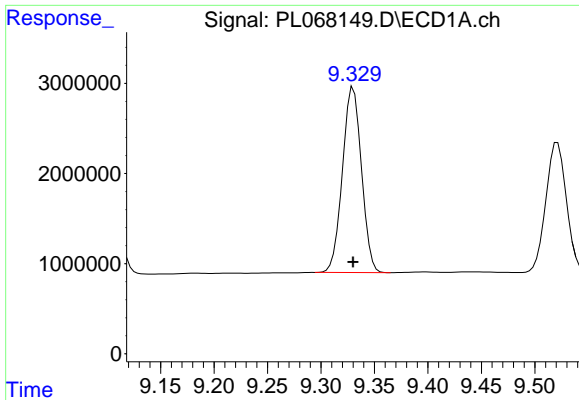
#20 Methoxychlor

R.T.: 9.104 min
 Delta R.T.: 0.000 min
 Response: 12817570
 Conc: 54.08 ng/ml



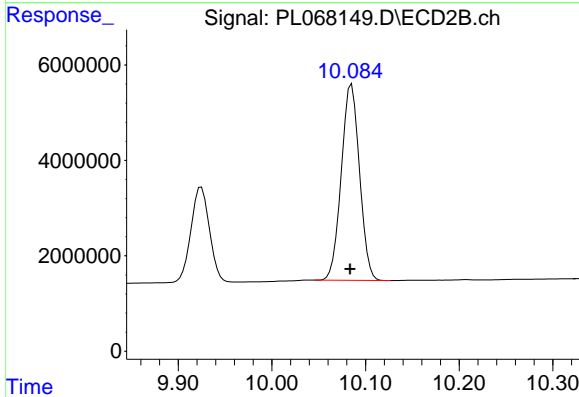
#20 Methoxychlor

R.T.: 9.925 min
 Delta R.T.: 0.002 min
 Response: 27464644
 Conc: 53.81 ng/ml

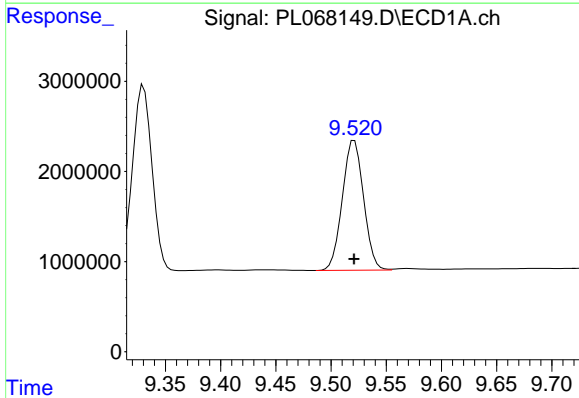


#21 Endrin ketone
 R.T.: 9.330 min
 Delta R.T.: 0.000 min
 Response: 25501286
 Conc: 55.89 ng/ml

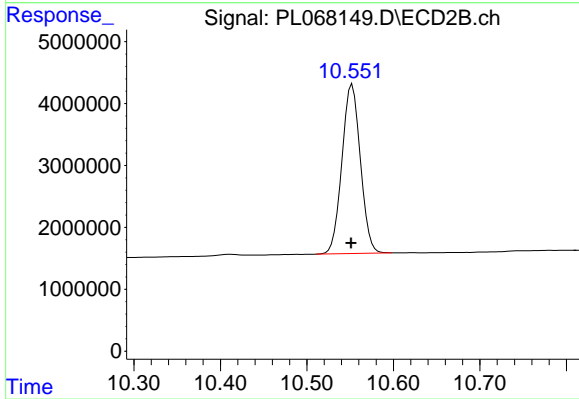
Instrument :
 ECD_L
 ClientSampleId :
 PS-TP1MSD



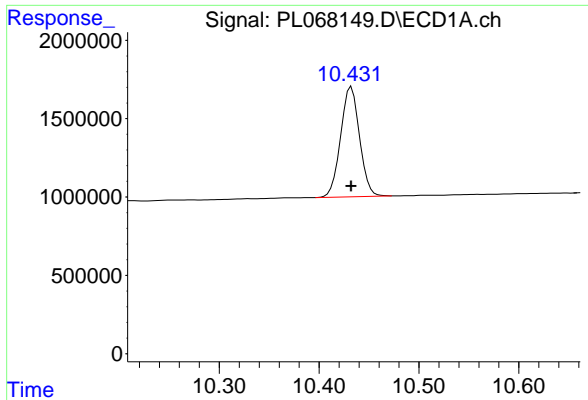
#21 Endrin ketone
 R.T.: 10.085 min
 Delta R.T.: 0.002 min
 Response: 55664306
 Conc: 56.30 ng/ml



#22 Mirex
 R.T.: 9.521 min
 Delta R.T.: 0.000 min
 Response: 19283008
 Conc: 53.84 ng/ml

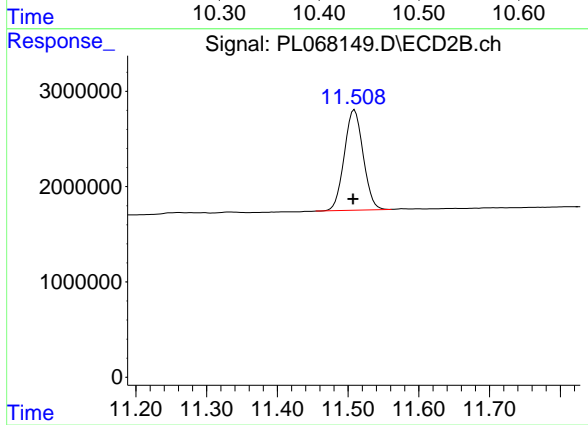


#22 Mirex
 R.T.: 10.552 min
 Delta R.T.: 0.001 min
 Response: 40284967
 Conc: 52.94 ng/ml



#28 Decachlorobiphenyl
R.T.: 10.432 min
Delta R.T.: 0.000 min
Response: 9251998
Conc: 22.42 ng/ml

Instrument :
ECD_L
ClientSampled :
PS-TP1MSD



#28 Decachlorobiphenyl
R.T.: 11.509 min
Delta R.T.: 0.002 min
Response: 19587236
Conc: 21.77 ng/ml