

Data Path : Z:\pestpcbsrv\HPCHEM1\ECD\_L\Data\PL071521\  
 Data File : PL068152.D  
 Signal(s) : Signal #1: ECD1A.ch Signal #2: ECD2B.ch  
 Acq On : 15 Jul 2021 02:32  
 Operator : AR\AJ  
 Sample : M3026-03  
 Misc :  
 ALS Vial : 31 Sample Multiplier: 1

Instrument :  
 ECD\_L  
 ClientSampleId :  
 ABN-JG-1

Integration File signal 1: autoint1.e  
 Integration File signal 2: autoint2.e  
 Quant Time: Jul 15 04:50:20 2021  
 Quant Method : Z:\pestpcbsrv\HPCHEM1\ECD\_L\methods\PL071521.M  
 Quant Title : GC Extractables  
 QLast Update : Thu Jul 15 04:04:16 2021  
 Response via : Initial Calibration  
 Integrator: ChemStation

Volume Inj. : 1 µl  
 Signal #1 Phase : ZB-MR2 Signal #2 Phase: ZB-MR1  
 Signal #1 Info : 30M x 0.32mm x0.2 Signal #2 Info : 30M x 0.32mm x0.5µm

Compound	RT#1	RT#2	Resp#1	Resp#2	ng/ml	ng/ml
-----						
System Monitoring Compounds						
1) SA Tetrachlo...	4.655	5.585	7999891	18222421	19.845	17.670
28) SA Decachlor...	10.431	11.510	8726383	17828012	21.147	19.815

Target Compounds

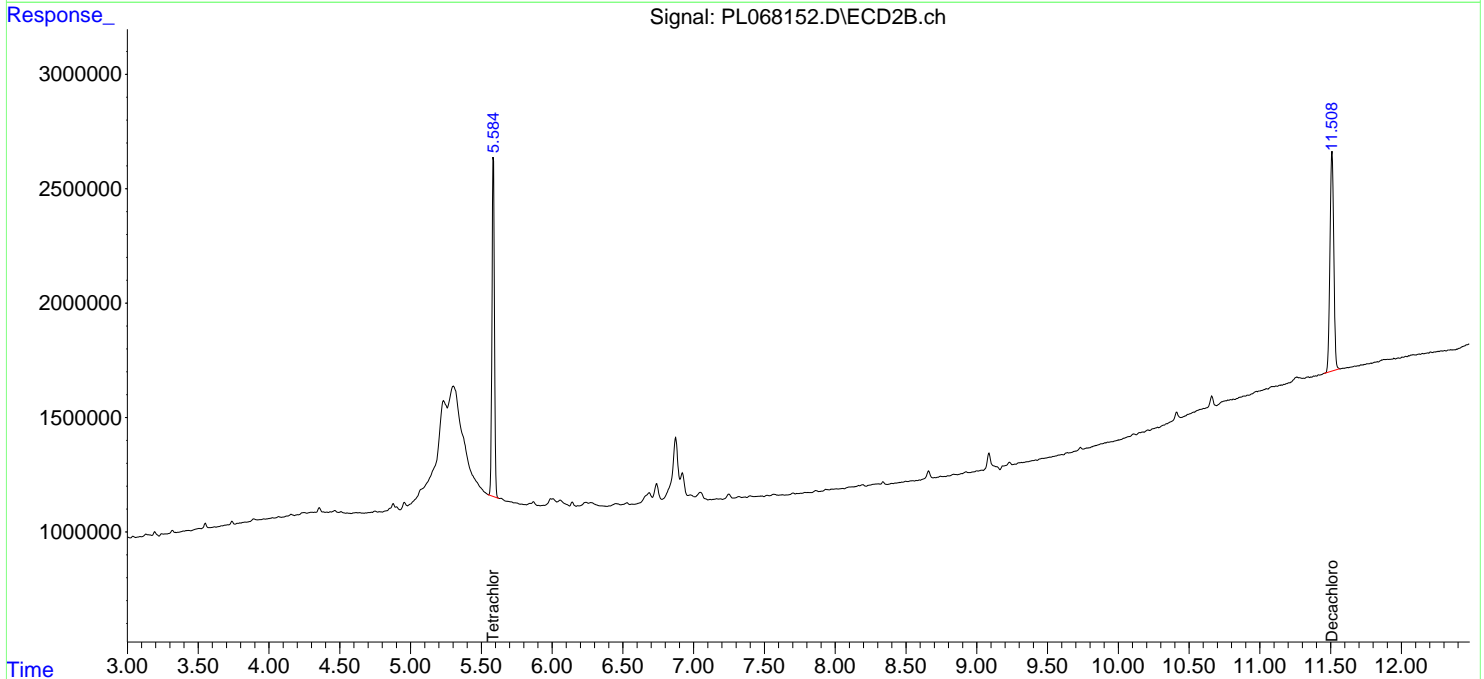
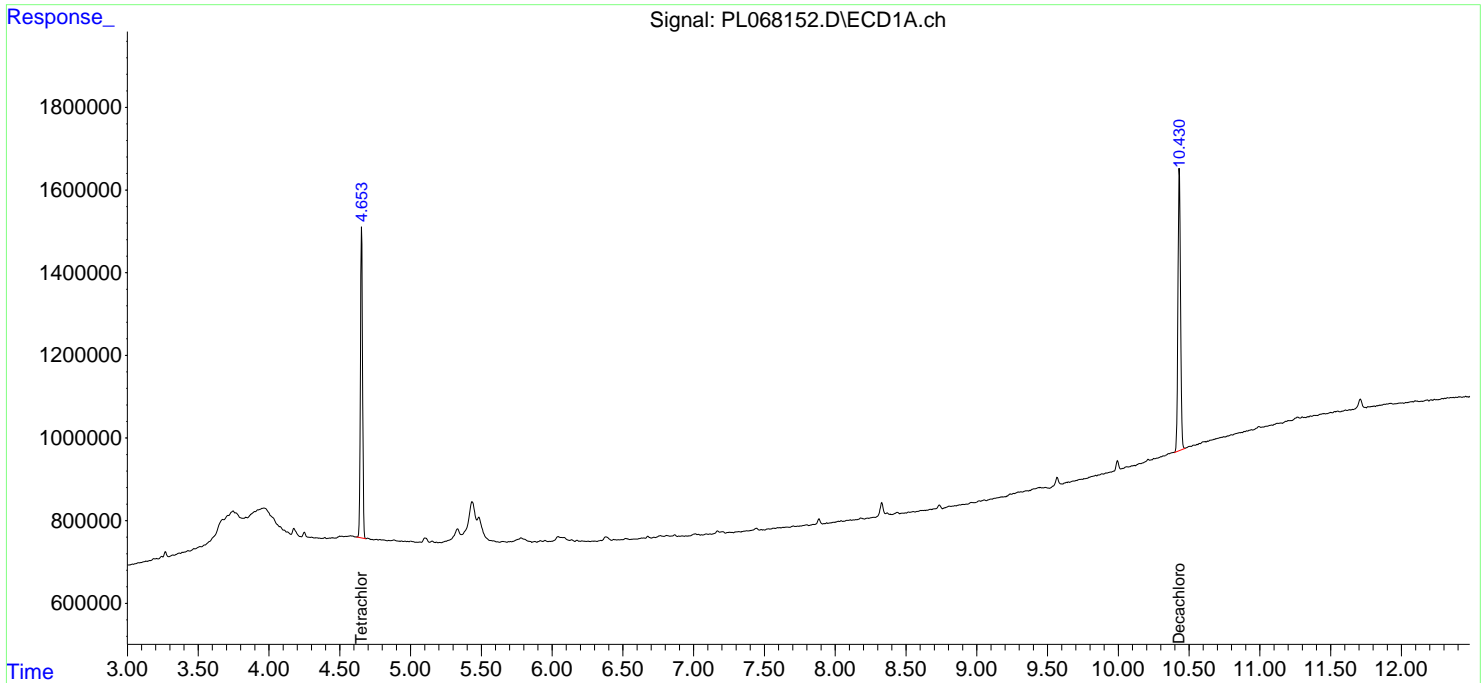
(f)=RT Delta > 1/2 Window (#)=Amounts differ by > 25% (m)=manual int.

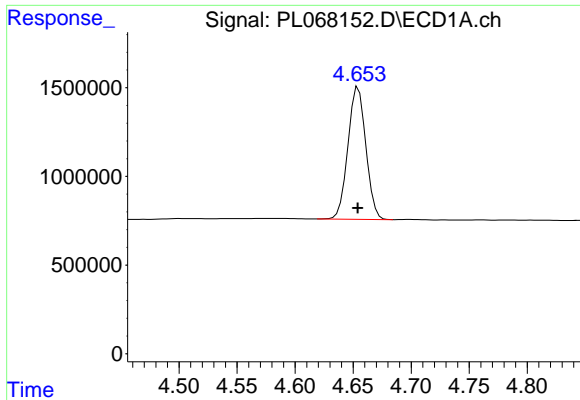
Data Path : Z:\pestpcbsrv\HPCHEM1\ECD\_L\Data\PL071521\  
 Data File : PL068152.D  
 Signal(s) : Signal #1: ECD1A.ch Signal #2: ECD2B.ch  
 Acq On : 15 Jul 2021 02:32  
 Operator : AR\AJ  
 Sample : M3026-03  
 Misc :  
 ALS Vial : 31 Sample Multiplier: 1

**Instrument :**  
 ECD\_L  
**Client Sampled :**  
 ABN-JG-1

Integration File signal 1: autoint1.e  
 Integration File signal 2: autoint2.e  
 Quant Time: Jul 15 04:50:20 2021  
 Quant Method : Z:\pestpcbsrv\HPCHEM1\ECD\_L\methods\PL071521.M  
 Quant Title : GC Extractables  
 QLast Update : Thu Jul 15 04:04:16 2021  
 Response via : Initial Calibration  
 Integrator: ChemStation

Volume Inj. : 1 µl  
 Signal #1 Phase : ZB-MR2 Signal #2 Phase: ZB-MR1  
 Signal #1 Info : 30M x 0.32mm x0.2 Signal #2 Info : 30M x 0.32mm x0.5µm

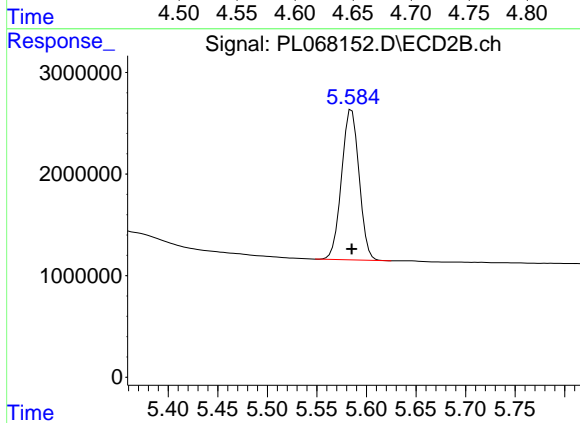




#1 Tetrachloro-m-xylene

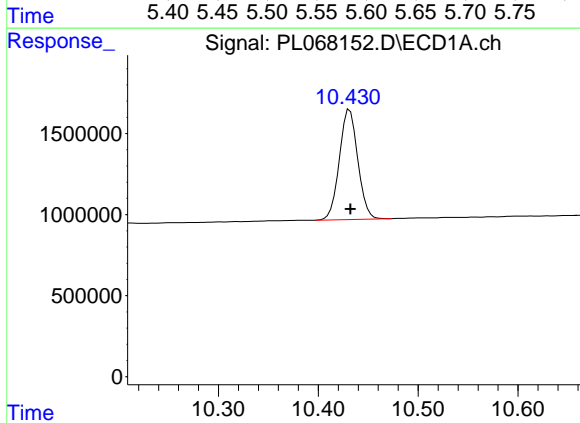
R.T.: 4.655 min  
 Delta R.T.: 0.000 min  
 Response: 7999891  
 Conc: 19.85 ng/ml

Instrument :  
 ECD\_L  
 ClientSampleId :  
 ABN-JG-1



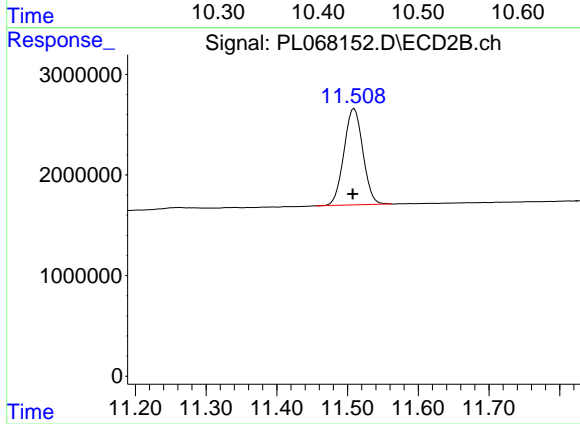
#1 Tetrachloro-m-xylene

R.T.: 5.585 min  
 Delta R.T.: 0.000 min  
 Response: 18222421  
 Conc: 17.67 ng/ml



#28 Decachlorobiphenyl

R.T.: 10.431 min  
 Delta R.T.: 0.000 min  
 Response: 8726383  
 Conc: 21.15 ng/ml



#28 Decachlorobiphenyl

R.T.: 11.510 min  
 Delta R.T.: 0.003 min  
 Response: 17828012  
 Conc: 19.82 ng/ml