

Data Path : Z:\pestpcbsrv\HPCHEM1\ECD_L\Data\PL071521\
 Data File : PL068155.D
 Signal(s) : Signal #1: ECD1A.ch Signal #2: ECD2B.ch
 Acq On : 15 Jul 2021 03:22
 Operator : AR\AJ
 Sample : M3026-12
 Misc :
 ALS Vial : 34 Sample Multiplier: 1

Instrument :
 ECD_L
 ClientSampleId :
 ABN-JG-4

Integration File signal 1: autoint1.e
 Integration File signal 2: autoint2.e
 Quant Time: Jul 15 04:50:51 2021
 Quant Method : Z:\pestpcbsrv\HPCHEM1\ECD_L\methods\PL071521.M
 Quant Title : GC Extractables
 QLast Update : Thu Jul 15 04:04:16 2021
 Response via : Initial Calibration
 Integrator: ChemStation

Volume Inj. : 1 µl
 Signal #1 Phase : ZB-MR2 Signal #2 Phase: ZB-MR1
 Signal #1 Info : 30M x 0.32mm x0.2 Signal #2 Info : 30M x 0.32mm x0.5µm

Compound	RT#1	RT#2	Resp#1	Resp#2	ng/ml	ng/ml

System Monitoring Compounds						
1) SA Tetrachlo...	4.654	5.585	7885927	18509245	19.563	17.948
28) SA Decachlor...	10.432	11.509	8890039	17773143	21.543	19.754

Target Compounds

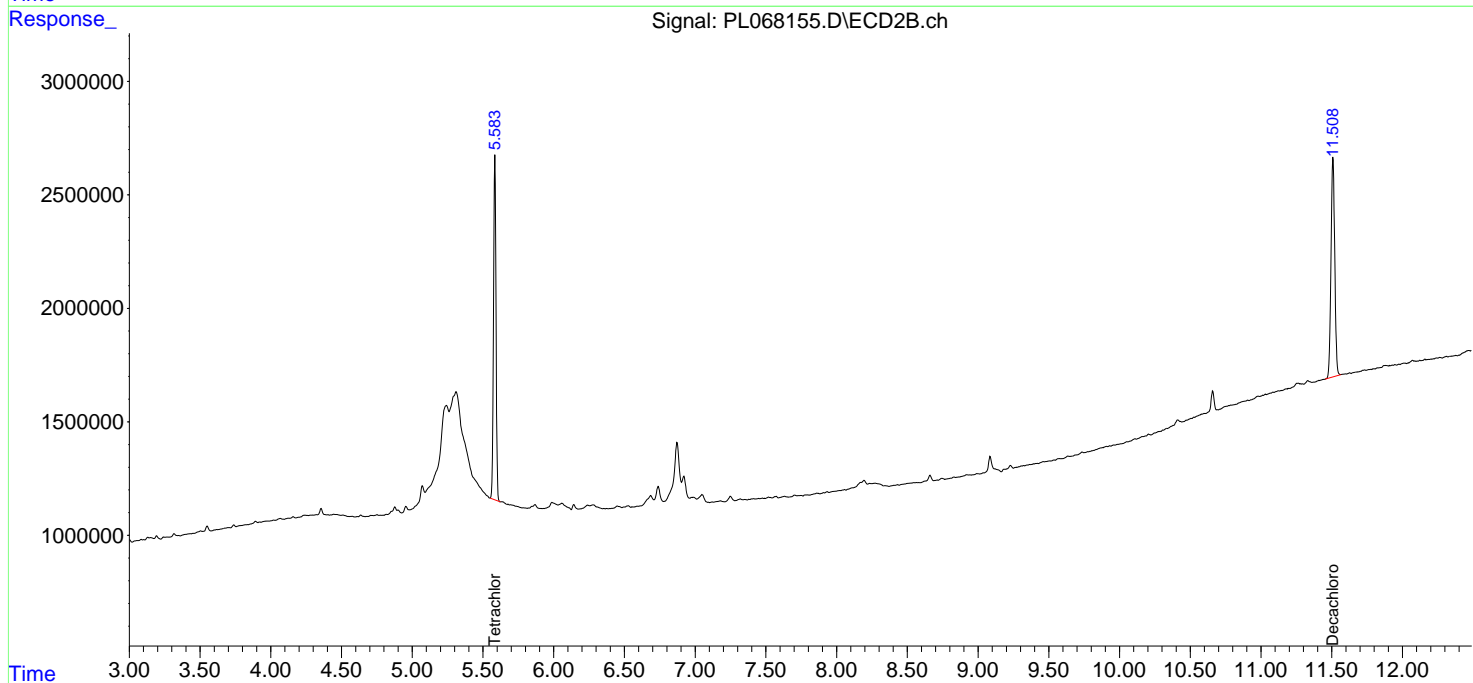
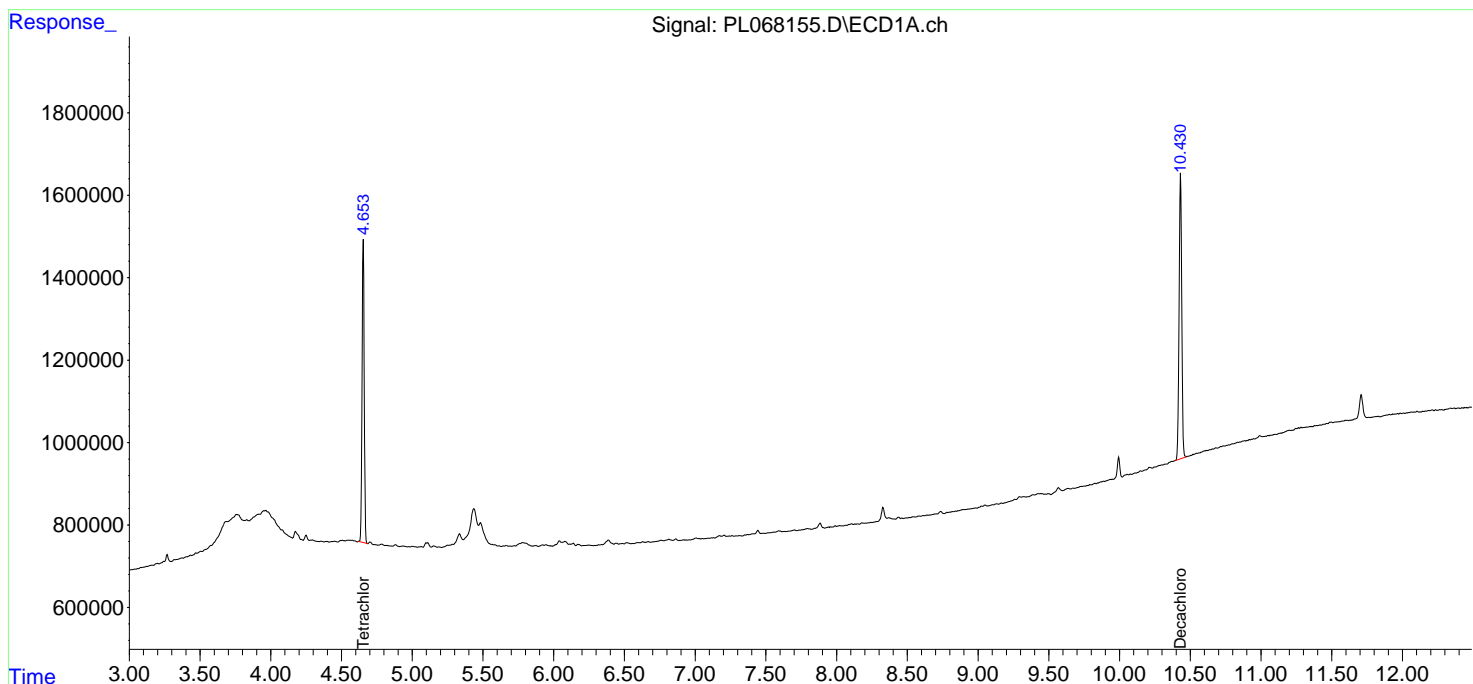
(f)=RT Delta > 1/2 Window (#)=Amounts differ by > 25% (m)=manual int.

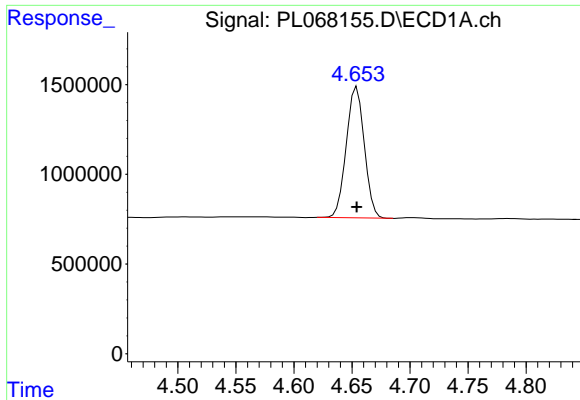
Data Path : Z:\pestpcbsrv\HPCHEM1\ECD_L\Data\PL071521\
 Data File : PL068155.D
 Signal(s) : Signal #1: ECD1A.ch Signal #2: ECD2B.ch
 Acq On : 15 Jul 2021 03:22
 Operator : AR\AJ
 Sample : M3026-12
 Misc :
 ALS Vial : 34 Sample Multiplier: 1

Instrument :
 ECD_L
 ClientSampleId :
 ABN-JG-4

Integration File signal 1: autoint1.e
 Integration File signal 2: autoint2.e
 Quant Time: Jul 15 04:50:51 2021
 Quant Method : Z:\pestpcbsrv\HPCHEM1\ECD_L\methods\PL071521.M
 Quant Title : GC Extractables
 QLast Update : Thu Jul 15 04:04:16 2021
 Response via : Initial Calibration
 Integrator: ChemStation

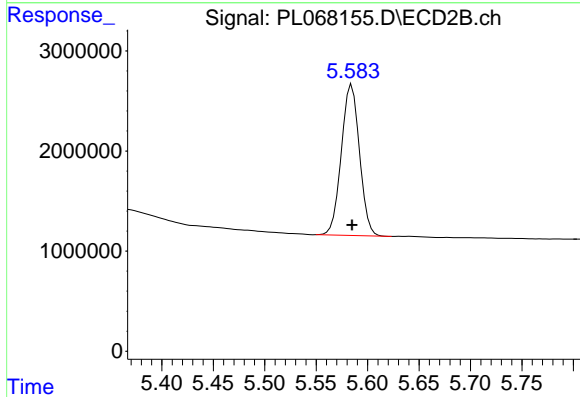
Volume Inj. : 1 µl
 Signal #1 Phase : ZB-MR2 Signal #2 Phase: ZB-MR1
 Signal #1 Info : 30M x 0.32mm x0.2 Signal #2 Info : 30M x 0.32mm x0.5µm



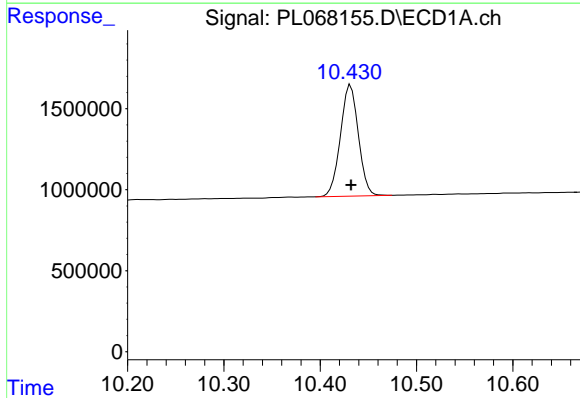


#1 Tetrachloro-m-xylene
 R.T.: 4.654 min
 Delta R.T.: 0.000 min
 Response: 7885927
 Conc: 19.56 ng/ml

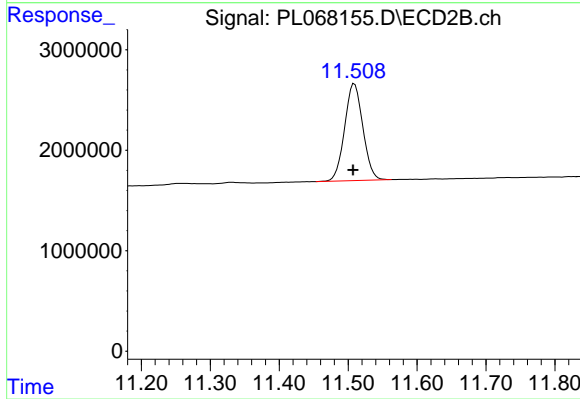
Instrument :
 ECD_L
 ClientSampleId :
 ABN-JG-4



#1 Tetrachloro-m-xylene
 R.T.: 5.585 min
 Delta R.T.: 0.000 min
 Response: 18509245
 Conc: 17.95 ng/ml



#28 Decachlorobiphenyl
 R.T.: 10.432 min
 Delta R.T.: 0.000 min
 Response: 8890039
 Conc: 21.54 ng/ml



#28 Decachlorobiphenyl
 R.T.: 11.509 min
 Delta R.T.: 0.002 min
 Response: 17773143
 Conc: 19.75 ng/ml