

Data Path : Z:\pestpcbsrv\HPCHEM1\ECD_L\Data\PL071521\
 Data File : PL068160.D
 Signal(s) : Signal #1: ECD1A.ch Signal #2: ECD2B.ch
 Acq On : 15 Jul 2021 05:01
 Operator : AR\AJ
 Sample : PB137673BL
 Misc :
 ALS Vial : 36 Sample Multiplier: 1

Instrument :
 ECD_L
 ClientSampleId :
 PB137673BL

Integration File signal 1: autoint1.e
 Integration File signal 2: autoint2.e
 Quant Time: Jul 15 07:27:36 2021
 Quant Method : Z:\pestpcbsrv\HPCHEM1\ECD_L\methods\PL071521.M
 Quant Title : GC Extractables
 QLast Update : Thu Jul 15 04:04:16 2021
 Response via : Initial Calibration
 Integrator: ChemStation

Volume Inj. : 1 µl
 Signal #1 Phase : ZB-MR2 Signal #2 Phase: ZB-MR1
 Signal #1 Info : 30M x 0.32mm x0.2 Signal #2 Info : 30M x 0.32mm x0.5µm

Compound	RT#1	RT#2	Resp#1	Resp#2	ng/ml	ng/ml

System Monitoring Compounds						
1) SA Tetrachlo...	4.654	5.585	7866507	19268508	19.514	18.684
28) SA Decachlor...	10.432	11.510	9359423	18409999	22.681	20.462

Target Compounds

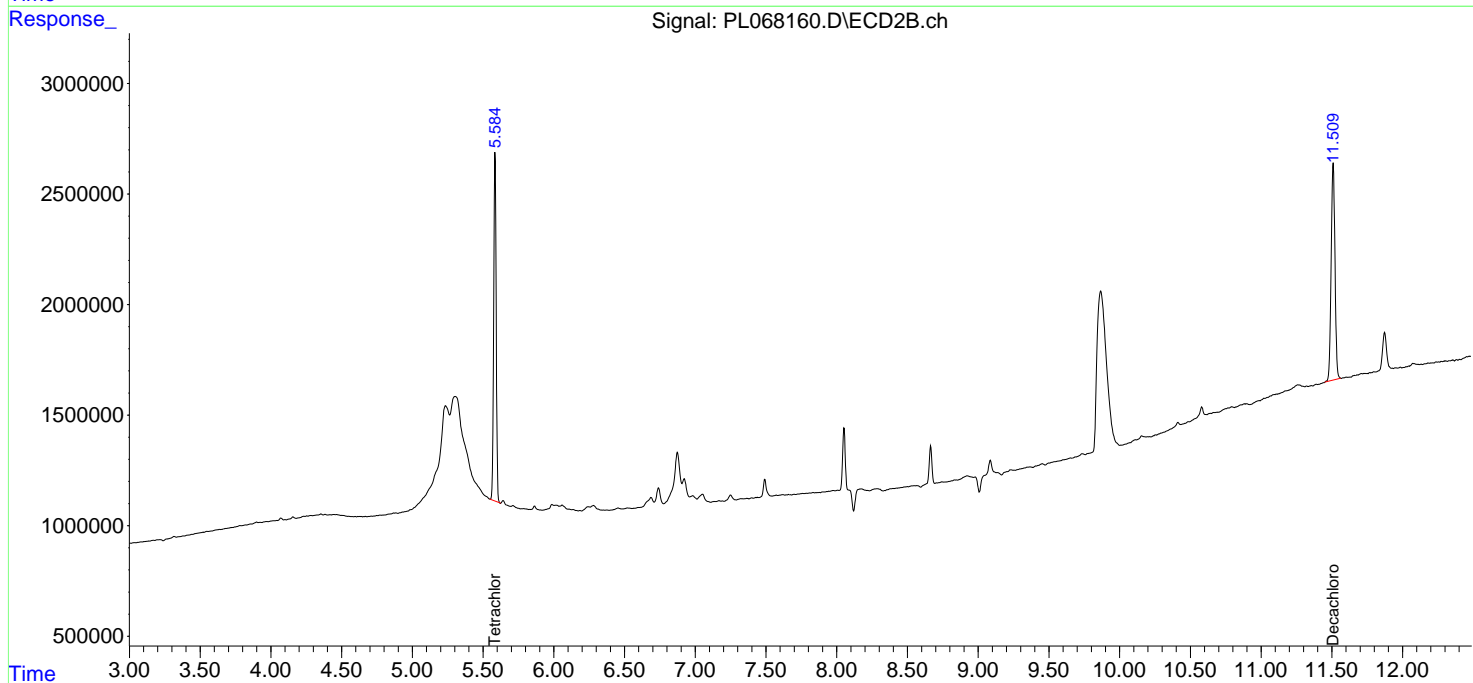
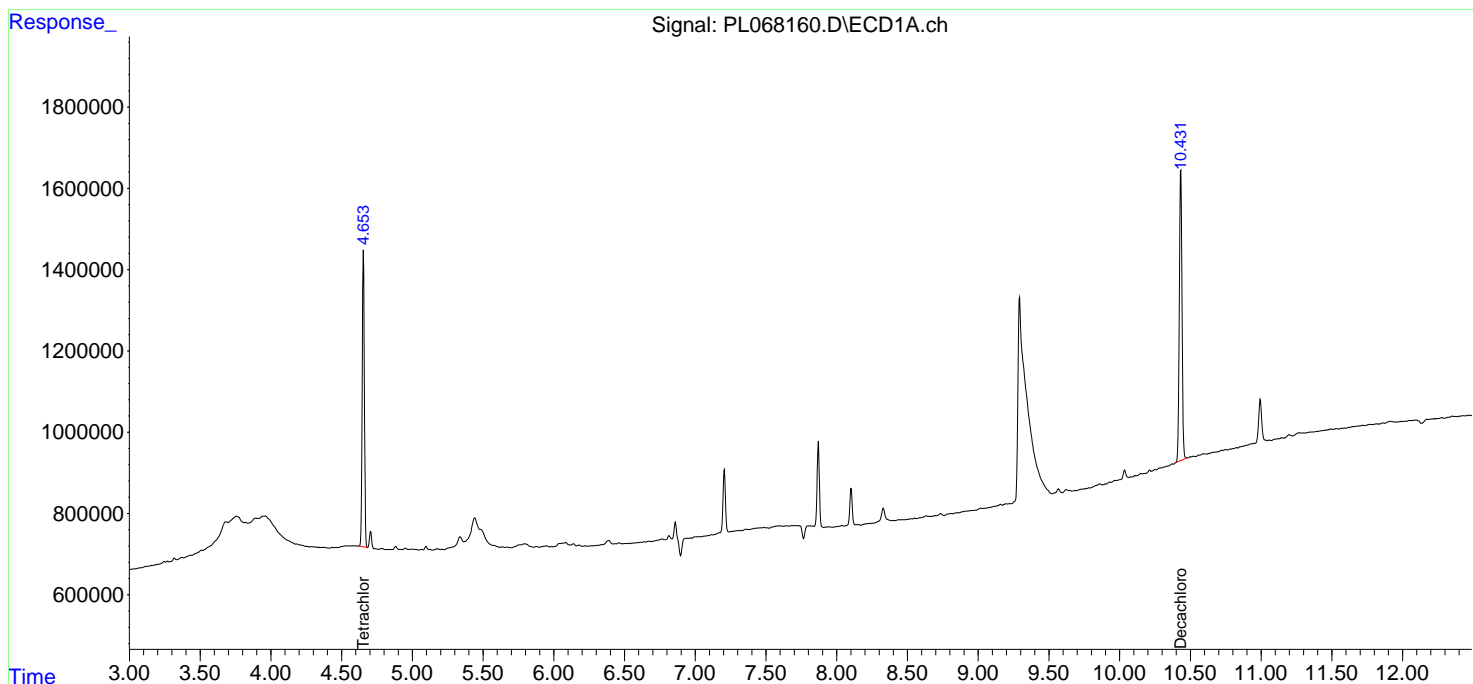
(f)=RT Delta > 1/2 Window (#)=Amounts differ by > 25% (m)=manual int.

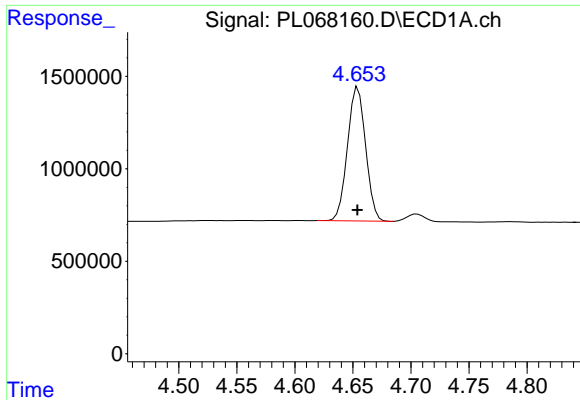
Data Path : Z:\pestpcbsrv\HPCHEM1\ECD_L\Data\PL071521\
 Data File : PL068160.D
 Signal(s) : Signal #1: ECD1A.ch Signal #2: ECD2B.ch
 Acq On : 15 Jul 2021 05:01
 Operator : AR\AJ
 Sample : PB137673BL
 Misc :
 ALS Vial : 36 Sample Multiplier: 1

Instrument :
 ECD_L
 ClientSampleId :
 PB137673BL

Integration File signal 1: autoint1.e
 Integration File signal 2: autoint2.e
 Quant Time: Jul 15 07:27:36 2021
 Quant Method : Z:\pestpcbsrv\HPCHEM1\ECD_L\methods\PL071521.M
 Quant Title : GC Extractables
 QLast Update : Thu Jul 15 04:04:16 2021
 Response via : Initial Calibration
 Integrator: ChemStation

Volume Inj. : 1 µl
 Signal #1 Phase : ZB-MR2 Signal #2 Phase: ZB-MR1
 Signal #1 Info : 30M x 0.32mm x0.2 Signal #2 Info : 30M x 0.32mm x0.5µm

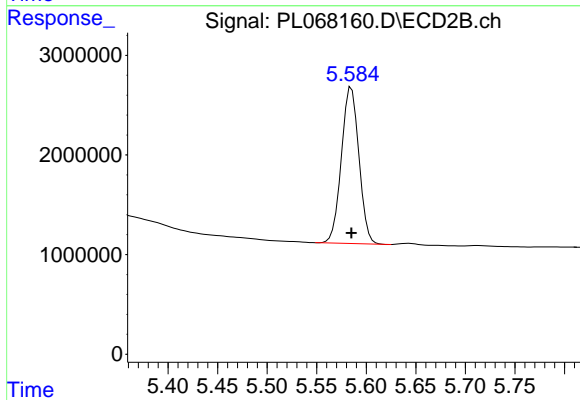




#1 Tetrachloro-m-xylene

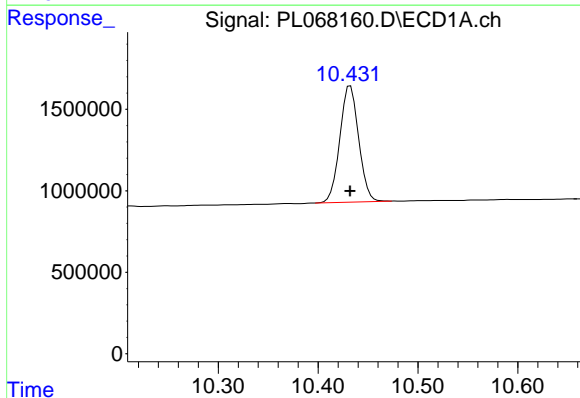
R.T.: 4.654 min
 Delta R.T.: 0.000 min
 Response: 7866507
 Conc: 19.51 ng/ml

Instrument :
 ECD_L
 ClientSampled :
 PB137673BL



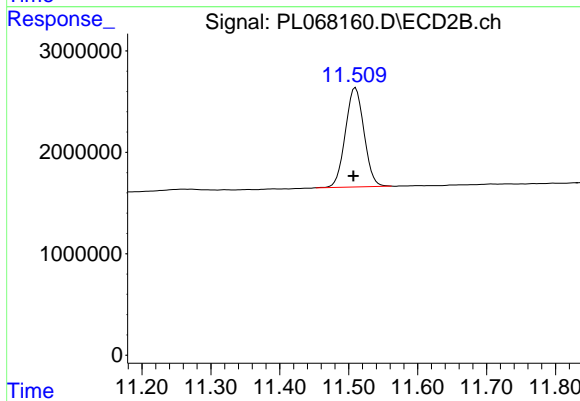
#1 Tetrachloro-m-xylene

R.T.: 5.585 min
 Delta R.T.: 0.000 min
 Response: 19268508
 Conc: 18.68 ng/ml



#28 Decachlorobiphenyl

R.T.: 10.432 min
 Delta R.T.: 0.000 min
 Response: 9359423
 Conc: 22.68 ng/ml



#28 Decachlorobiphenyl

R.T.: 11.510 min
 Delta R.T.: 0.003 min
 Response: 18409999
 Conc: 20.46 ng/ml