

Data Path : Z:\pestpcbsrv\HPCHEM1\ECD_L\Data\PL071521\
 Data File : PL068171.D
 Signal(s) : Signal #1: ECD1A.ch Signal #2: ECD2B.ch
 Acq On : 15 Jul 2021 08:04
 Operator : AR\AJ
 Sample : PSTDCCC050
 Misc :
 ALS Vial : 7 Sample Multiplier: 1

Instrument :
 ECD_L
 ClientSampleId :
 PSTDCCC050

Integration File signal 1: autoint1.e
 Integration File signal 2: autoint2.e
 Quant Time: Jul 15 08:16:36 2021
 Quant Method : Z:\pestpcbsrv\HPCHEM1\ECD_L\methods\PL071521.M
 Quant Title : GC Extractables
 QLast Update : Thu Jul 15 04:04:16 2021
 Response via : Initial Calibration
 Integrator: ChemStation

Volume Inj. : 1 µl
 Signal #1 Phase : ZB-MR2 Signal #2 Phase: ZB-MR1
 Signal #1 Info : 30M x 0.32mm x0.2 Signal #2 Info : 30M x 0.32mm x0.5µm

	Compound	RT#1	RT#2	Resp#1	Resp#2	ng/ml	ng/ml

System Monitoring Compounds							
1)	SA Tetrachlo...	4.655	5.585	20210316	52114443	50.135	50.533
28)	SA Decachlor...	10.432	11.510	22078102	42488968	53.502	47.225
Target Compounds							
2)	A alpha-BHC	5.362	6.166	26319260	70609242	48.820	51.557
3)	MA gamma-BHC...	5.785	6.562	25479091	66010421	49.066	51.116
4)	MA Heptachlor	6.198	7.211	25299872	64402631	45.811	49.862
5)	MB Aldrin	6.524	7.582	23675160	58660411	47.083	48.663
6)	B beta-BHC	6.164	6.813	12885081	31680233	49.549	45.520
7)	B delta-BHC	6.426	7.081	25032913	63578069	50.221	52.187
8)	B Heptachlo...	7.100	8.048	22843178	56351475	47.812	50.693
9)	A Endosulfan I	7.504	8.453	21368841	49325707	47.882	48.405
10)	B gamma-Chl...	7.378	8.317	23081491	54552286	47.964	49.075
11)	B alpha-Chl...	7.448	8.398	23087696	53993228	48.246	48.443
12)	B 4,4'-DDE	7.661	8.584	20729541	48955995	47.957	48.232
13)	MA Dieldrin	7.790	8.743	21817027	50125397	47.983	48.087
14)	MA Endrin	8.082	8.982	20825041	42664691	48.349	48.119
15)	B Endosulfa...	8.391	9.215	19530713	41902661	49.360	47.328
16)	A 4,4'-DDD	8.247	9.123	18402916	41787927	50.039	48.769
17)	MA 4,4'-DDT	8.508	9.441	19092767	42560484	47.205	45.134
18)	B Endrin al...	8.579	9.349	15652036	33730819	50.207	46.249
19)	B Endosulfa...	8.810	9.587	20359306	42118512	49.429	47.110
20)	A Methoxychlor	9.104	9.925	11922146	22734176	50.304	44.545
21)	B Endrin ke...	9.330	10.086	23392265	45887102	51.266	46.411
22)	Mirex	9.521	10.553	19420828	35910242	54.224	47.190

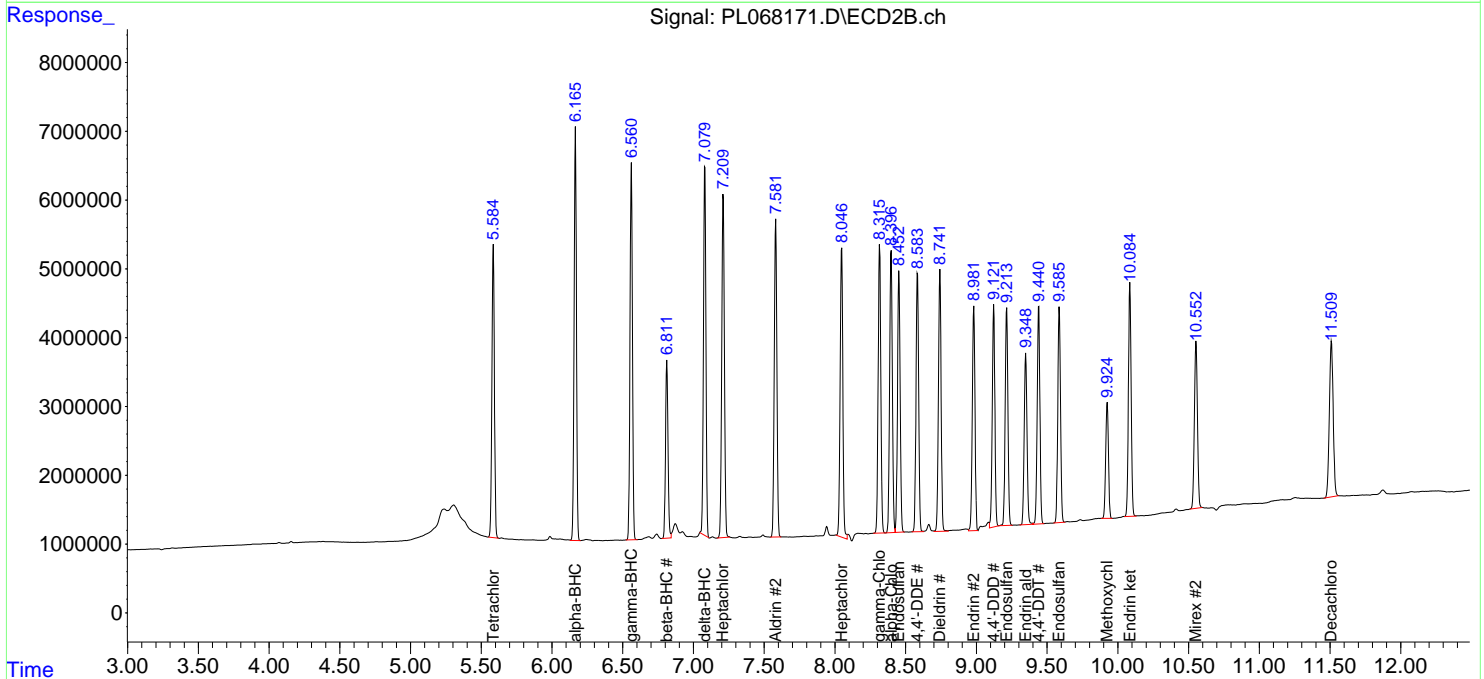
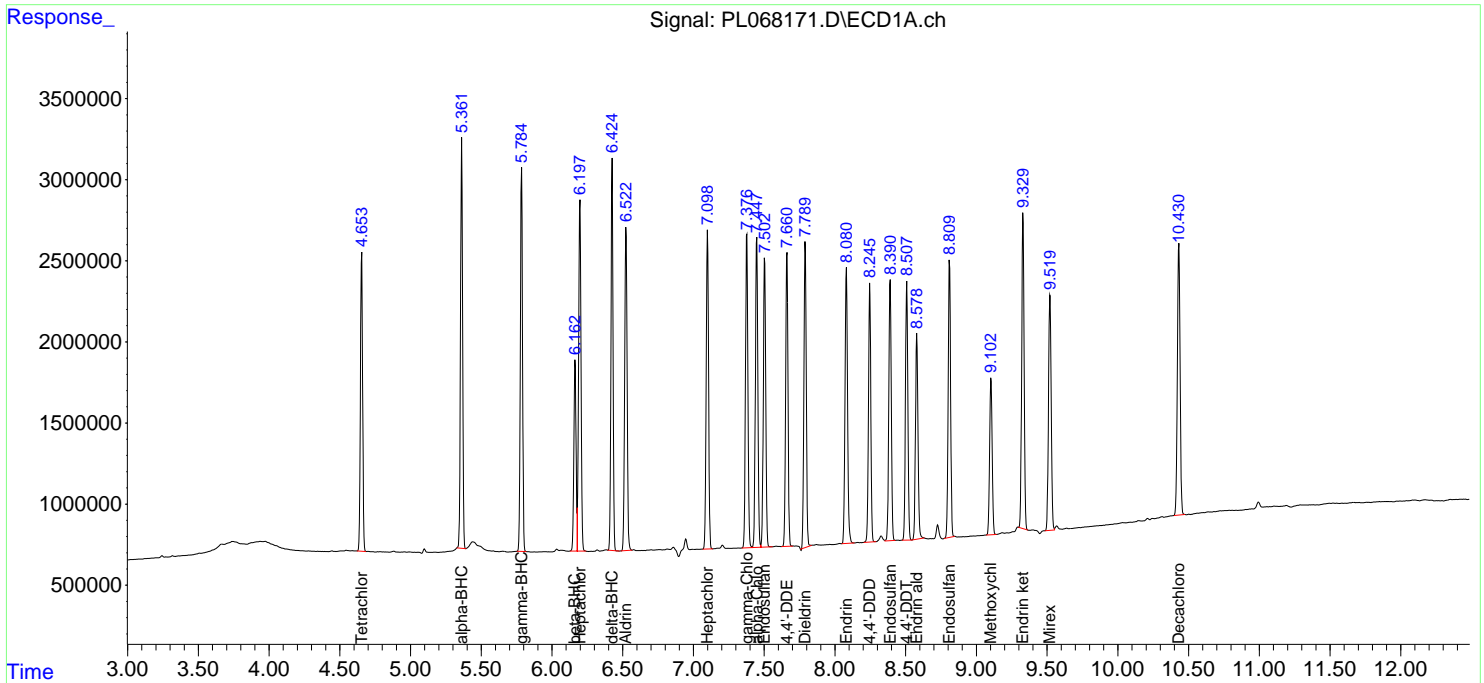
(f)=RT Delta > 1/2 Window (#)=Amounts differ by > 25% (m)=manual int.

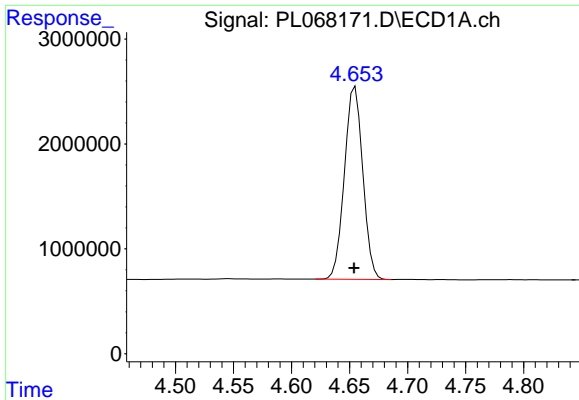
Data Path : Z:\pestpcbsrv\HPCHEM1\ECD_L\Data\PL071521\
 Data File : PL068171.D
 Signal(s) : Signal #1: ECD1A.ch Signal #2: ECD2B.ch
 Acq On : 15 Jul 2021 08:04
 Operator : AR\AJ
 Sample : PSTDCCC050
 Misc :
 ALS Vial : 7 Sample Multiplier: 1

Instrument :
 ECD_L
 Client Sampled :
 PSTDCCC050

Integration File signal 1: autoint1.e
 Integration File signal 2: autoint2.e
 Quant Time: Jul 15 08:16:36 2021
 Quant Method : Z:\pestpcbsrv\HPCHEM1\ECD_L\methods\PL071521.M
 Quant Title : GC Extractables
 QLast Update : Thu Jul 15 04:04:16 2021
 Response via : Initial Calibration
 Integrator: ChemStation

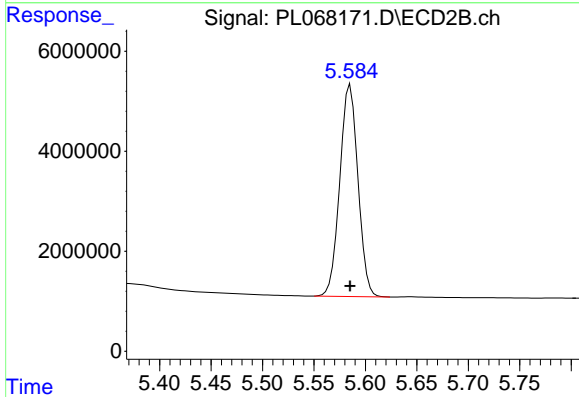
Volume Inj. : 1 µl
 Signal #1 Phase : ZB-MR2 Signal #2 Phase: ZB-MR1
 Signal #1 Info : 30M x 0.32mm x0.2 Signal #2 Info : 30M x 0.32mm x0.5µm



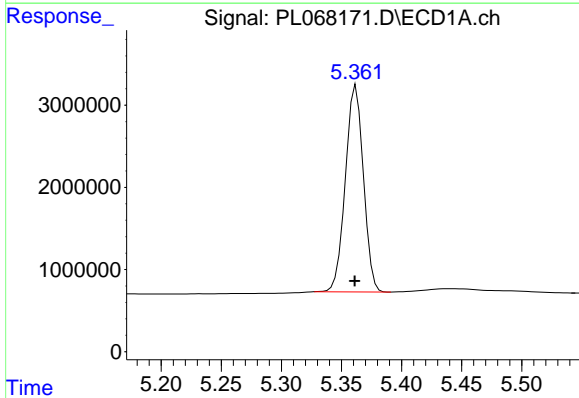


#1 Tetrachloro-m-xylene
 R.T.: 4.655 min
 Delta R.T.: 0.000 min
 Response: 20210316
 Conc: 50.14 ng/ml

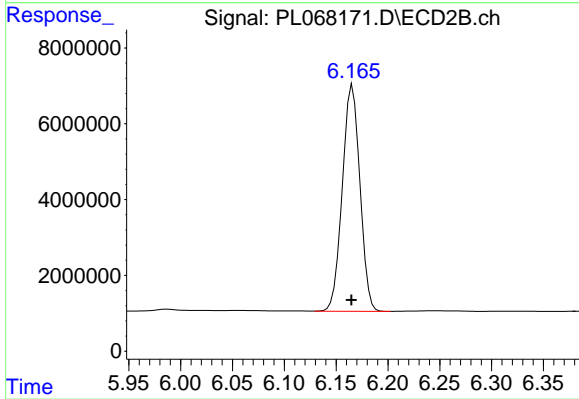
Instrument :
 ECD_L
 ClientSampleId :
 PSTDCCC050



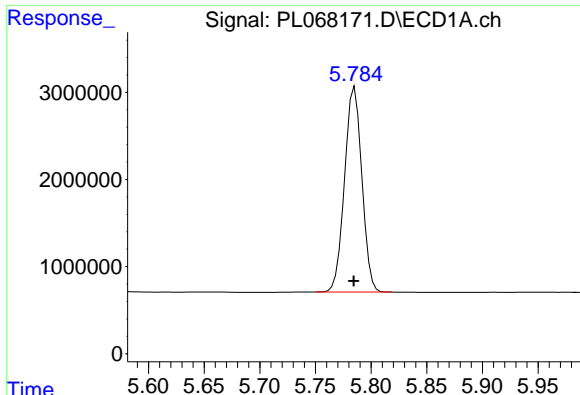
#1 Tetrachloro-m-xylene
 R.T.: 5.585 min
 Delta R.T.: 0.000 min
 Response: 52114443
 Conc: 50.53 ng/ml



#2 alpha-BHC
 R.T.: 5.362 min
 Delta R.T.: 0.001 min
 Response: 26319260
 Conc: 48.82 ng/ml



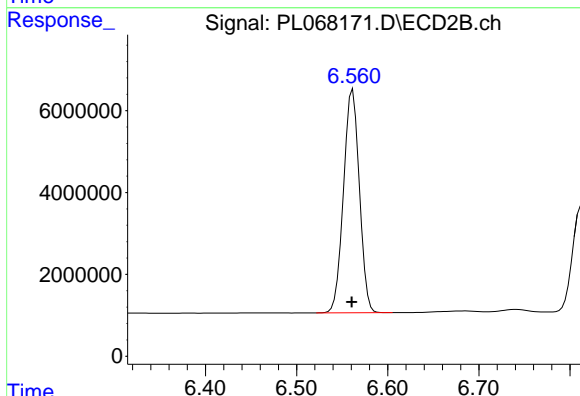
#2 alpha-BHC
 R.T.: 6.166 min
 Delta R.T.: 0.001 min
 Response: 70609242
 Conc: 51.56 ng/ml



#3 gamma-BHC (Lindane)

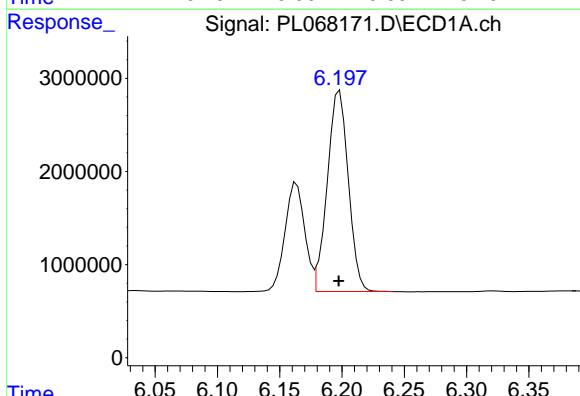
R.T.: 5.785 min
 Delta R.T.: 0.000 min
 Response: 25479091
 Conc: 49.07 ng/ml

Instrument :
 ECD_L
 ClientSampleId :
 PSTDCCC050



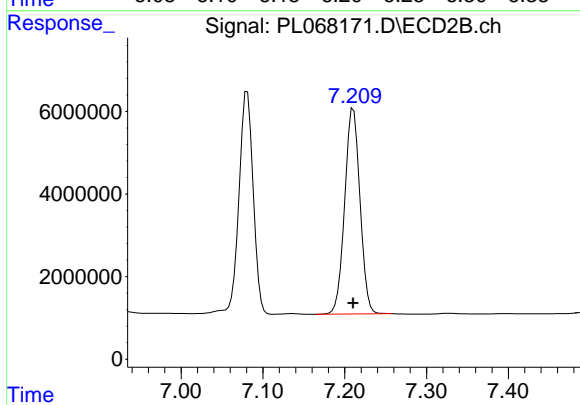
#3 gamma-BHC (Lindane)

R.T.: 6.562 min
 Delta R.T.: 0.001 min
 Response: 66010421
 Conc: 51.12 ng/ml



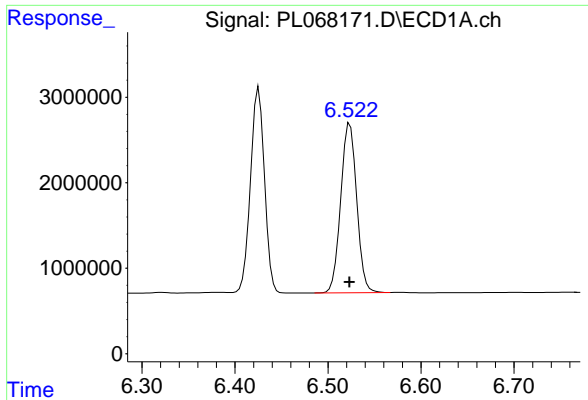
#4 Heptachlor

R.T.: 6.198 min
 Delta R.T.: 0.000 min
 Response: 25299872
 Conc: 45.81 ng/ml



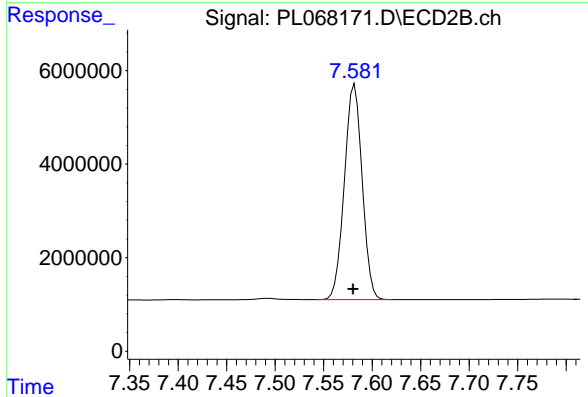
#4 Heptachlor

R.T.: 7.211 min
 Delta R.T.: 0.000 min
 Response: 64402631
 Conc: 49.86 ng/ml

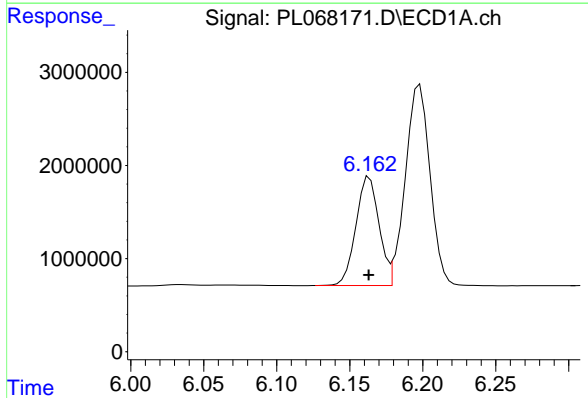


#5 Aldrin
 R.T.: 6.524 min
 Delta R.T.: 0.000 min
 Response: 23675160
 Conc: 47.08 ng/ml

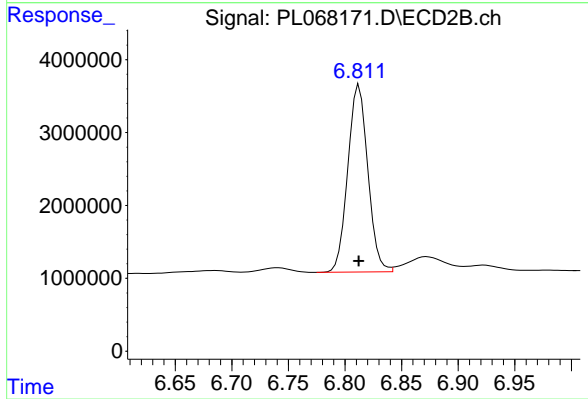
Instrument :
 ECD_L
 ClientSampleId :
 PSTDCCC050



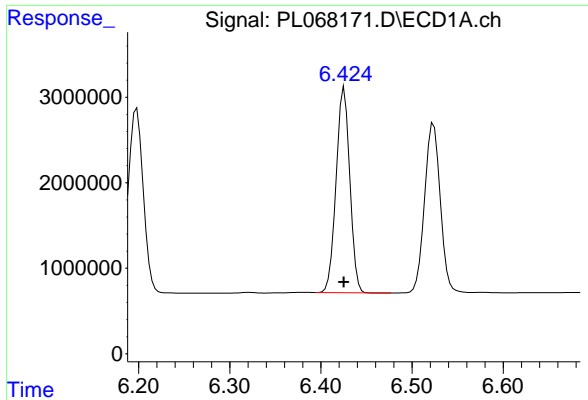
#5 Aldrin
 R.T.: 7.582 min
 Delta R.T.: 0.001 min
 Response: 58660411
 Conc: 48.66 ng/ml



#6 beta-BHC
 R.T.: 6.164 min
 Delta R.T.: 0.000 min
 Response: 12885081
 Conc: 49.55 ng/ml



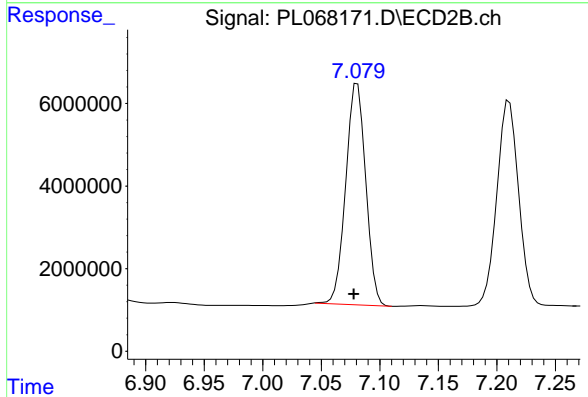
#6 beta-BHC
 R.T.: 6.813 min
 Delta R.T.: 0.000 min
 Response: 31680233
 Conc: 45.52 ng/ml



#7 delta-BHC

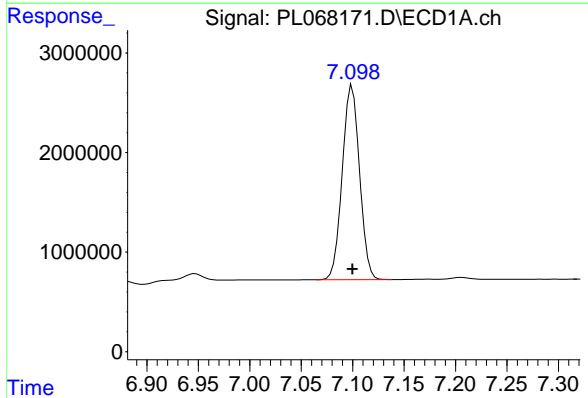
R.T.: 6.426 min
 Delta R.T.: 0.000 min
 Response: 25032913
 Conc: 50.22 ng/ml

Instrument :
 ECD_L
 ClientSampleId :
 PSTDCCC050



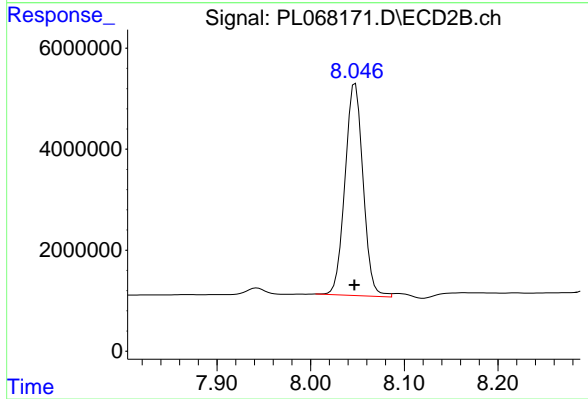
#7 delta-BHC

R.T.: 7.081 min
 Delta R.T.: 0.003 min
 Response: 63578069
 Conc: 52.19 ng/ml



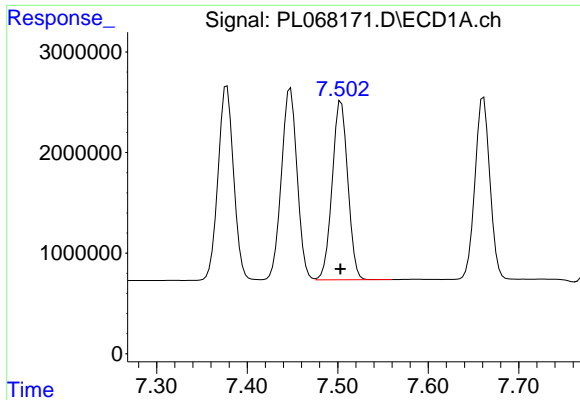
#8 Heptachlor epoxide

R.T.: 7.100 min
 Delta R.T.: 0.000 min
 Response: 22843178
 Conc: 47.81 ng/ml



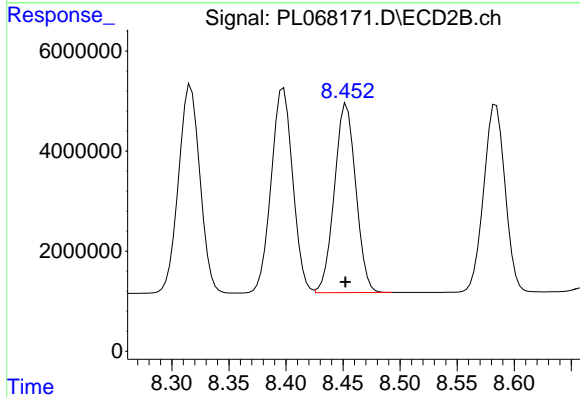
#8 Heptachlor epoxide

R.T.: 8.048 min
 Delta R.T.: 0.001 min
 Response: 56351475
 Conc: 50.69 ng/ml

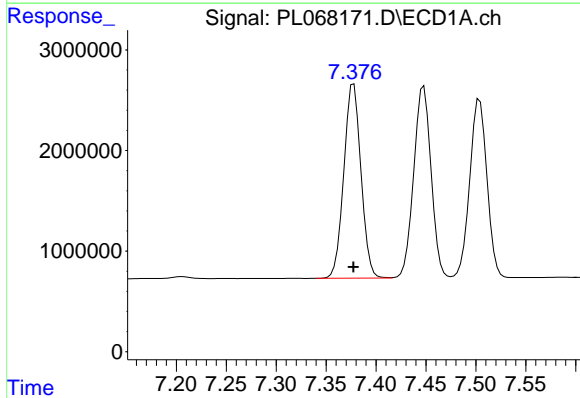


#9 Endosulfan I
 R.T.: 7.504 min
 Delta R.T.: 0.000 min
 Response: 21368841
 Conc: 47.88 ng/ml

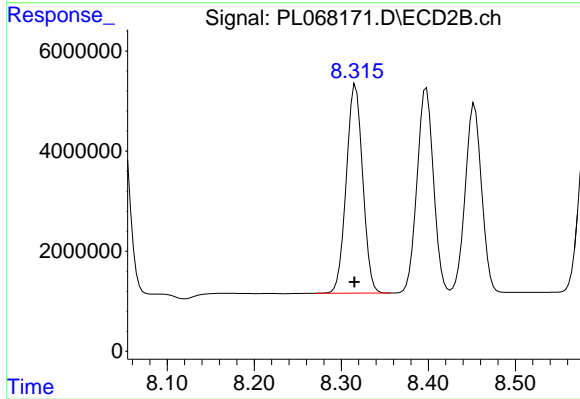
Instrument :
 ECD_L
 ClientSampleId :
 PSTDCCC050



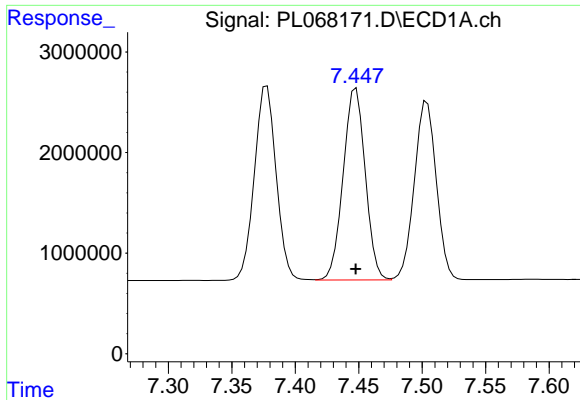
#9 Endosulfan I
 R.T.: 8.453 min
 Delta R.T.: 0.000 min
 Response: 49325707
 Conc: 48.41 ng/ml



#10 gamma-Chlordane
 R.T.: 7.378 min
 Delta R.T.: 0.000 min
 Response: 23081491
 Conc: 47.96 ng/ml

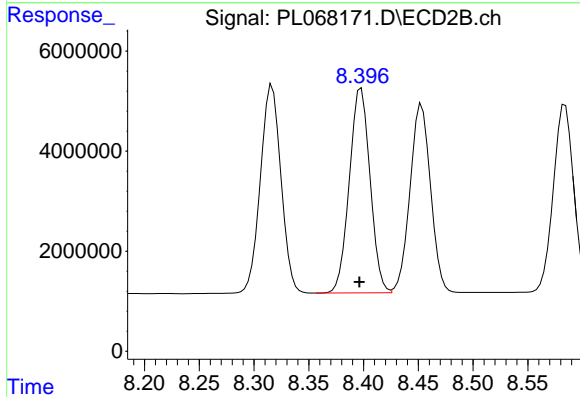


#10 gamma-Chlordane
 R.T.: 8.317 min
 Delta R.T.: 0.002 min
 Response: 54552286
 Conc: 49.08 ng/ml

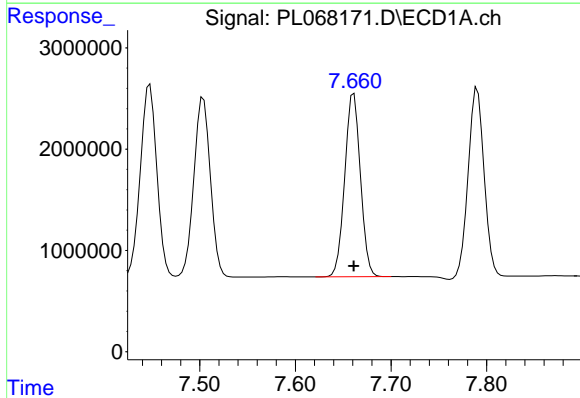


#11 alpha-Chlordane
 R.T.: 7.448 min
 Delta R.T.: 0.000 min
 Response: 23087696
 Conc: 48.25 ng/ml

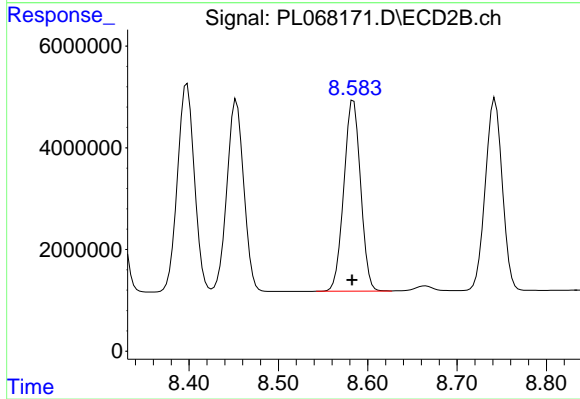
Instrument :
 ECD_L
 ClientSampleId :
 PSTDCCC050



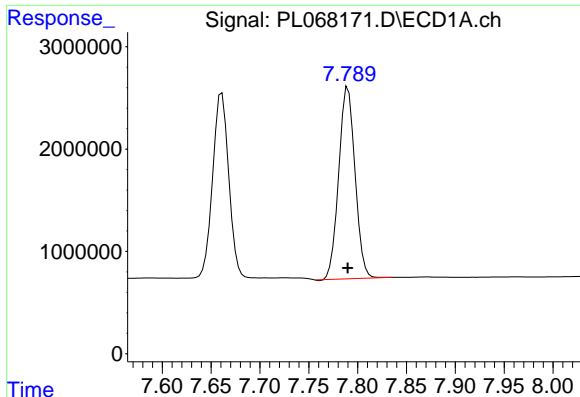
#11 alpha-Chlordane
 R.T.: 8.398 min
 Delta R.T.: 0.002 min
 Response: 53993228
 Conc: 48.44 ng/ml



#12 4,4'-DDE
 R.T.: 7.661 min
 Delta R.T.: 0.000 min
 Response: 20729541
 Conc: 47.96 ng/ml



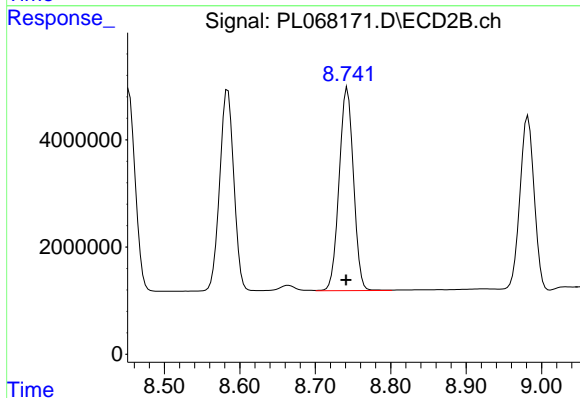
#12 4,4'-DDE
 R.T.: 8.584 min
 Delta R.T.: 0.002 min
 Response: 48955995
 Conc: 48.23 ng/ml



#13 Dieldrin

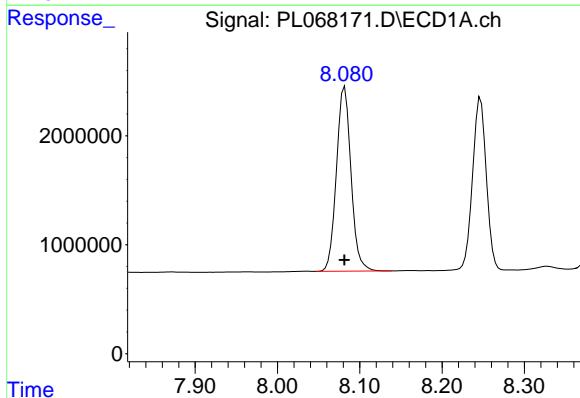
R.T.: 7.790 min
 Delta R.T.: 0.000 min
 Response: 21817027
 Conc: 47.98 ng/ml

Instrument :
 ECD_L
 ClientSampleId :
 PSTDCCC050



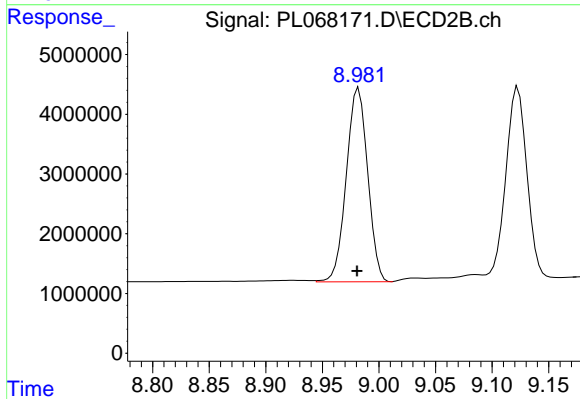
#13 Dieldrin

R.T.: 8.743 min
 Delta R.T.: 0.002 min
 Response: 50125397
 Conc: 48.09 ng/ml



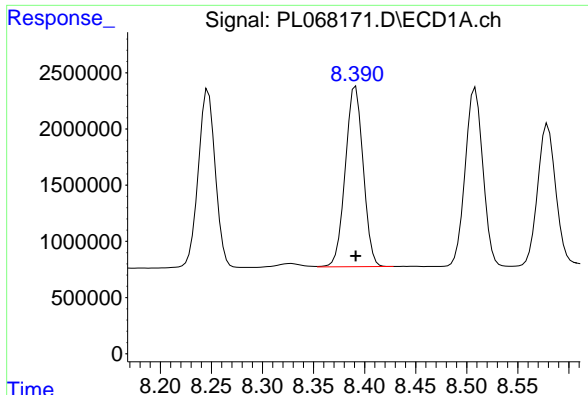
#14 Endrin

R.T.: 8.082 min
 Delta R.T.: 0.000 min
 Response: 20825041
 Conc: 48.35 ng/ml



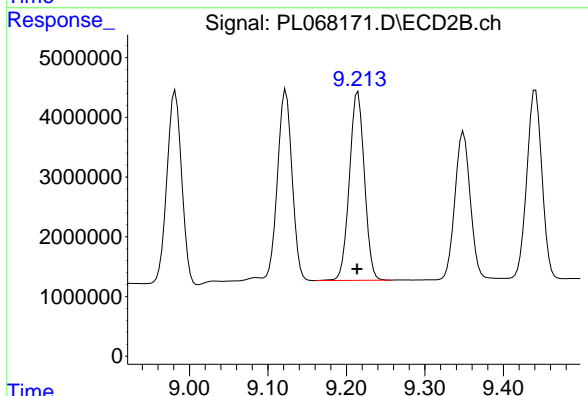
#14 Endrin

R.T.: 8.982 min
 Delta R.T.: 0.001 min
 Response: 42664691
 Conc: 48.12 ng/ml

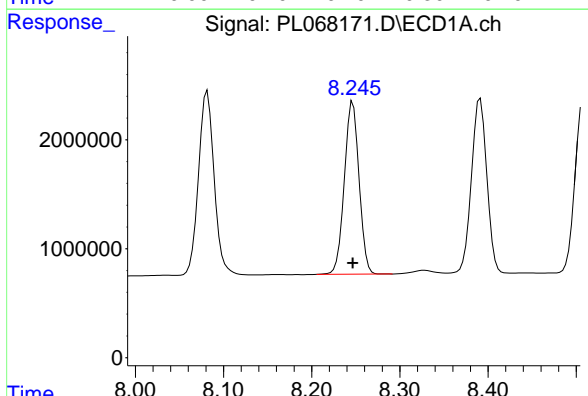


#15 Endosulfan II
 R.T.: 8.391 min
 Delta R.T.: 0.000 min
 Response: 19530713
 Conc: 49.36 ng/ml

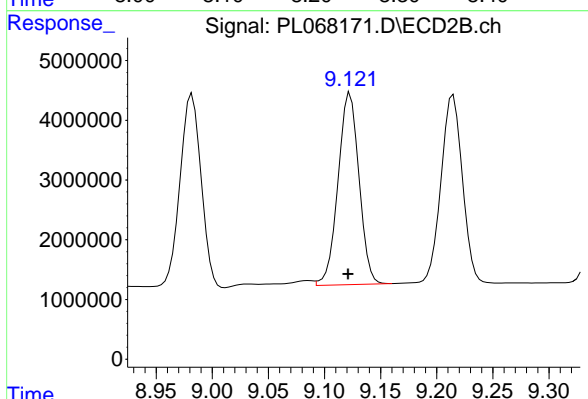
Instrument :
 ECD_L
 ClientSampleId :
 PSTDCCC050



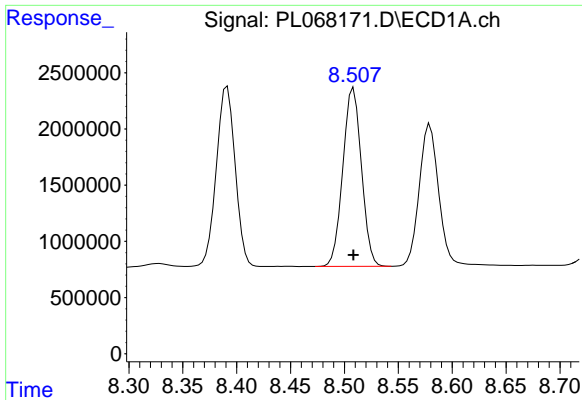
#15 Endosulfan II
 R.T.: 9.215 min
 Delta R.T.: 0.001 min
 Response: 41902661
 Conc: 47.33 ng/ml



#16 4,4'-DDD
 R.T.: 8.247 min
 Delta R.T.: 0.000 min
 Response: 18402916
 Conc: 50.04 ng/ml



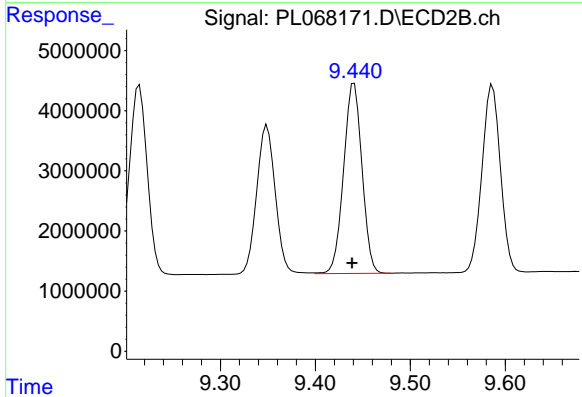
#16 4,4'-DDD
 R.T.: 9.123 min
 Delta R.T.: 0.002 min
 Response: 41787927
 Conc: 48.77 ng/ml



#17 4,4'-DDT

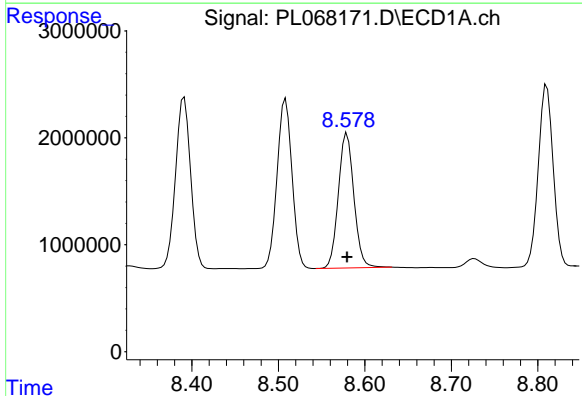
R.T.: 8.508 min
Delta R.T.: 0.000 min
Response: 19092767
Conc: 47.20 ng/ml

Instrument :
ECD_L
ClientSampleId :
PSTDCCC050



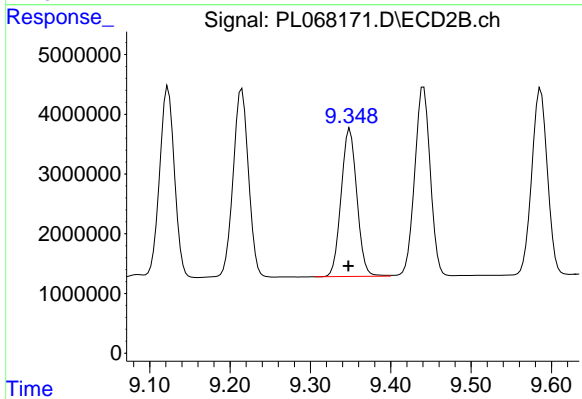
#17 4,4'-DDT

R.T.: 9.441 min
Delta R.T.: 0.002 min
Response: 42560484
Conc: 45.13 ng/ml



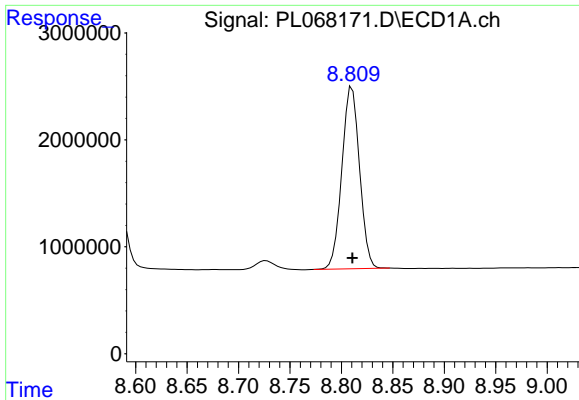
#18 Endrin aldehyde

R.T.: 8.579 min
Delta R.T.: 0.000 min
Response: 15652036
Conc: 50.21 ng/ml



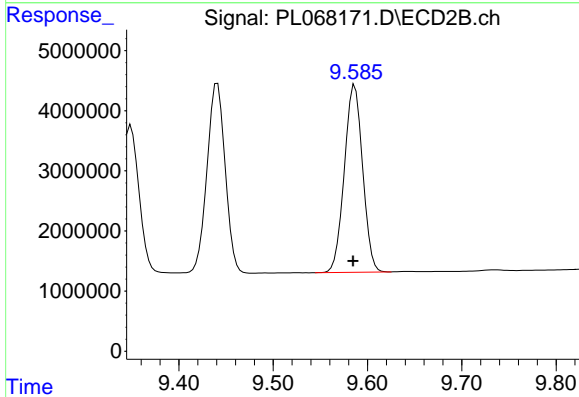
#18 Endrin aldehyde

R.T.: 9.349 min
Delta R.T.: 0.002 min
Response: 33730819
Conc: 46.25 ng/ml

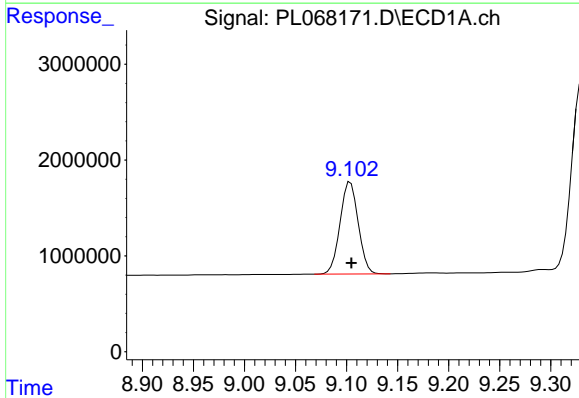


#19 Endosulfan Sulfate
 R.T.: 8.810 min
 Delta R.T.: 0.000 min
 Response: 20359306
 Conc: 49.43 ng/ml

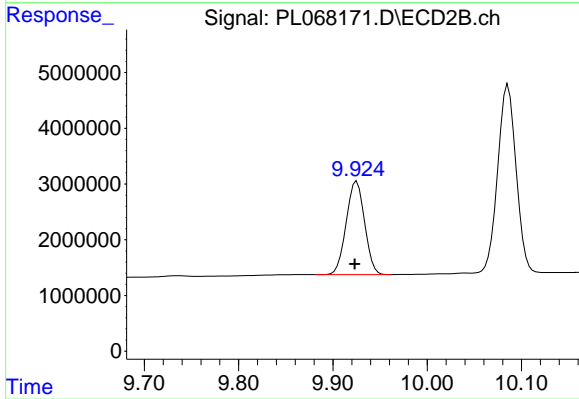
Instrument :
 ECD_L
 ClientSampleId :
 PSTDCCC050



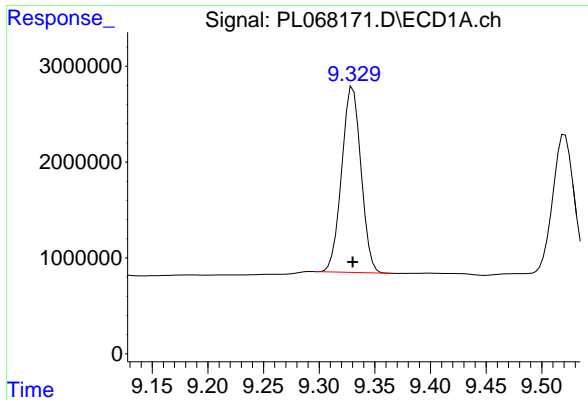
#19 Endosulfan Sulfate
 R.T.: 9.587 min
 Delta R.T.: 0.002 min
 Response: 42118512
 Conc: 47.11 ng/ml



#20 Methoxychlor
 R.T.: 9.104 min
 Delta R.T.: 0.000 min
 Response: 11922146
 Conc: 50.30 ng/ml

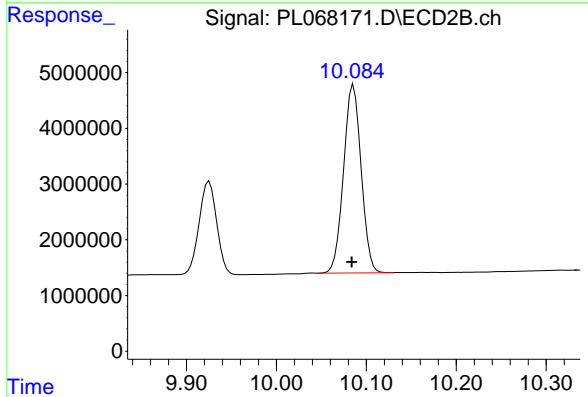


#20 Methoxychlor
 R.T.: 9.925 min
 Delta R.T.: 0.002 min
 Response: 22734176
 Conc: 44.55 ng/ml

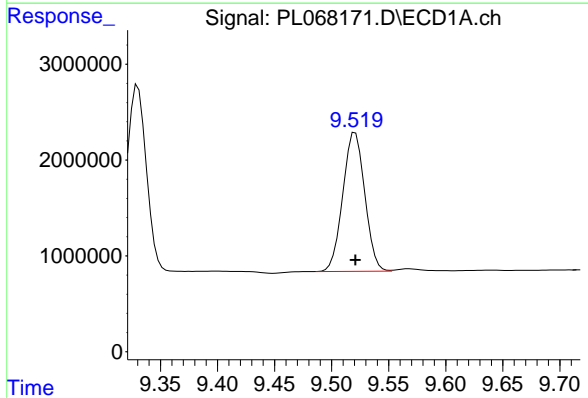


#21 Endrin ketone
 R.T.: 9.330 min
 Delta R.T.: 0.000 min
 Response: 23392265
 Conc: 51.27 ng/ml

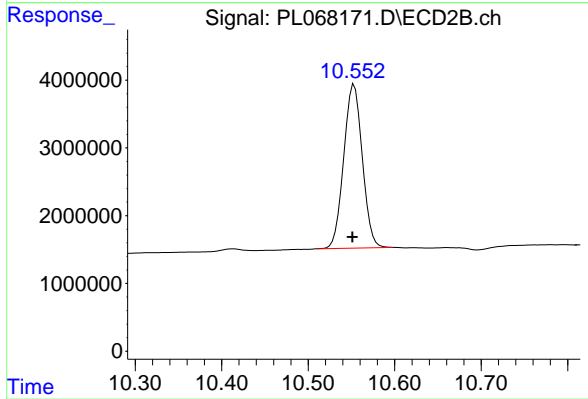
Instrument :
 ECD_L
 ClientSampleId :
 PSTDCCC050



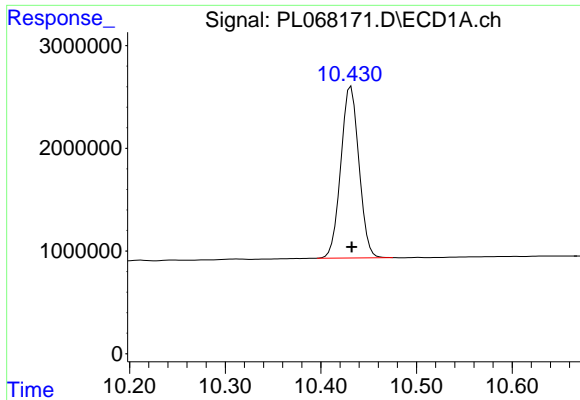
#21 Endrin ketone
 R.T.: 10.086 min
 Delta R.T.: 0.002 min
 Response: 45887102
 Conc: 46.41 ng/ml



#22 Mirex
 R.T.: 9.521 min
 Delta R.T.: 0.000 min
 Response: 19420828
 Conc: 54.22 ng/ml



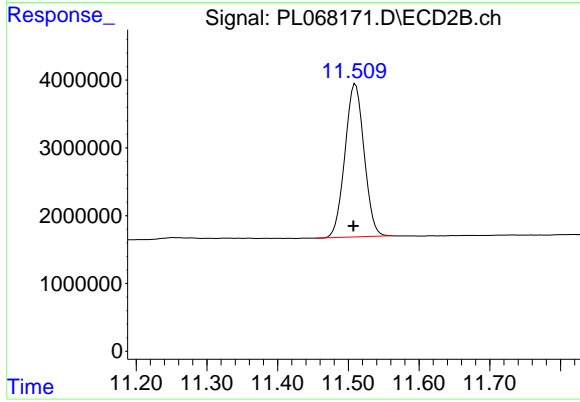
#22 Mirex
 R.T.: 10.553 min
 Delta R.T.: 0.002 min
 Response: 35910242
 Conc: 47.19 ng/ml



#28 Decachlorobiphenyl

R.T.: 10.432 min
Delta R.T.: 0.000 min
Response: 22078102
Conc: 53.50 ng/ml

Instrument :
ECD_L
ClientSampleId :
PSTDCCC050



#28 Decachlorobiphenyl

R.T.: 11.510 min
Delta R.T.: 0.003 min
Response: 42488968
Conc: 47.23 ng/ml