

Data Path : Z:\pestpcbsrv\HPCHEM1\ECD\_L\Data\PL071523\  
 Data File : PL083924.D  
 Signal(s) : Signal #1: ECD1A.ch Signal #2: ECD2B.ch  
 Acq On : 15 Jul 2023 00:44  
 Operator : AR\AJ  
 Sample : RESC352  
 Misc :  
 ALS Vial : 2 Sample Multiplier: 1

Instrument :  
 ECD\_L  
 ClientSampleId :  
 RESC211

Manual Integrations  
**APPROVED**

Reviewed By :Abdul Mirza 07/21/2023  
 Supervised By :Ankita Jodhani 07/21/2023

Integration File signal 1: autoint1.e  
 Integration File signal 2: autoint2.e  
 Quant Time: Jul 15 05:27:42 2023  
 Quant Method : Z:\pestpcbsrv\HPCHEM1\ECD\_L\methods\PL071523CLP.M  
 Quant Title : GC Extractables  
 QLast Update : Sat Jul 15 05:26:27 2023  
 Response via : Initial Calibration  
 Integrator: ChemStation

Volume Inj. : 1 µl  
 Signal #1 Phase : ZB-MR2 Signal #2 Phase: ZB-MR1  
 Signal #1 Info : 30M x 0.32mm x0.2 Signal #2 Info : 30M x 0.32mm x 0.50µm

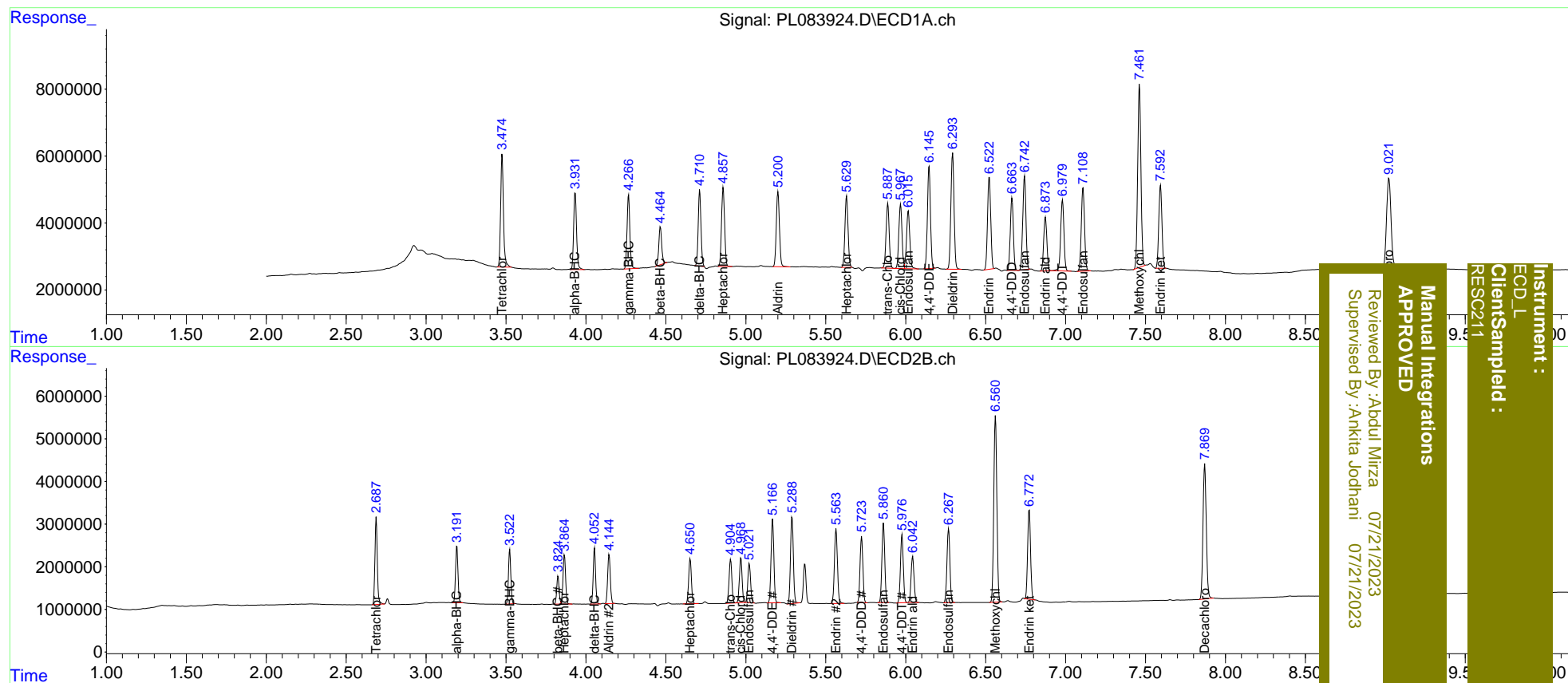
Compound	RT#1	RT#2	Resp#1	Resp#2	ng/ml	ng/ml
-----						
System Monitoring Compounds						
1) SA Tetrachlo...	3.476	2.688	41943176	21397282	20.225	20.841
27) SA Decachlor...	9.023	7.871	53392321	44828141	40.622	40.504
Target Compounds						
2) A alpha-BHC	3.933	3.193	28920146	13840745	9.573	9.577
3) MA gamma-BHC...	4.267	3.524	27430466	13383288	9.723	9.691
4) MA Heptachlor	4.859	3.865	30999576	12998597	9.850	9.866
5) MB Aldrin	5.201	4.145	30511758	13204244	10.269	10.114
6) B beta-BHC	4.466	3.825	14096594	6950929	10.520	10.318
7) B delta-BHC	4.712	4.054	27428491	13852486	9.687	9.684
8) B Heptachlo...	5.631	4.652	28969503	12552786	10.472	10.028
9) A Endosulfan I	6.017	5.022	24921864	11053171	10.326	9.762
10) B trans-Chl...	5.888	4.905	26537972	12376974	10.148	10.007
11) B cis-Chlor...	5.968	4.969	26811023	12572655	10.098	9.815
12) B 4,4'-DDE	6.147	5.166	40895097	23497697	19.746	19.475m
13) MA Dieldrin	6.294	5.289	47547898	25398108	19.583	19.420
14) MA Endrin	6.523	5.564	37933754	22670670	19.568	19.905
15) B Endosulfa...	6.744	5.861	38173884	22758011	20.005	19.950
16) A 4,4'-DDD	6.665	5.725	28558100	18776797	19.403	19.386
17) MA 4,4'-DDT	6.981	5.977	30881908	20175215	19.995	19.368
18) B Endrin al...	6.874	6.044	22109461	13651985	16.739	16.637
19) B Endosulfa...	7.110	6.269	35666902	22228449	20.332	20.148
20) A Methoxychlor	7.462	6.562	77082515	57975139	101.093	103.412
21) B Endrin ke...	7.594	6.773	34583610	26408670	20.384	20.153

(f)=RT Delta > 1/2 Window (#)=Amounts differ by > 25% (m)=manual int.

Data Path : Z:\pestpcbsrv\HPCHEM1\ECD\_L\Data\PL071523\  
 Data File : PL083924.D  
 Signal(s) : Signal #1: ECD1A.ch Signal #2: ECD2B.ch  
 Acq On : 15 Jul 2023 00:44  
 Operator : AR\AJ  
 Sample : RESC352  
 Misc :  
 ALS Vial : 2 Sample Multiplier: 1

Integration File signal 1: autoint1.e  
 Integration File signal 2: autoint2.e  
 Quant Time: Jul 15 05:27:42 2023  
 Quant Method : Z:\pestpcbsrv\HPCHEM1\ECD\_L\methods\PL071523CLP.M  
 Quant Title : GC Extractables  
 QLast Update : Sat Jul 15 05:26:27 2023  
 Response via : Initial Calibration  
 Integrator: ChemStation

Volume Inj. : 1 µl  
 Signal #1 Phase : ZB-MR2 Signal #2 Phase: ZB-MR1  
 Signal #1 Info : 30M x 0.32mm x0.2 Signal #2 Info : 30M x 0.32mm x 0.50µm



Instrument : ECD\_L  
 Client/Sampled : RESC214  
 Manual Integrations APPROVED  
 Reviewed By : Aboul Mirza 07/21/2023  
 Supervised By : Ankitia Jodhani 07/21/2023

Data Path : Z:\pestpcbsrv\HPCHEM1\ECD\_L\Data\PL071523\  
 Data File : PL083924.D  
 Acq On : 15 Jul 2023 00:44  
 Operator : AR\AJ  
 Sample : RESC352  
 Misc :  
 ALS Vial : 2 Sample Multiplier: 1

Instrument :  
 ECD\_L  
 ClientSampleId :  
 RESC211

Manual Integrations  
 APPROVED

Reviewed By :Abdul Mirza 07/21/2023  
 Supervised By :Ankita Jodhani 07/21/2023

Integration File signal 1: autoint1.e  
 Integration File signal 2: autoint2.e

Method : Z:\pestpcbsrv\HPCHEM1\ECD\_L\methods\PL071523C.D  
 Title : GC Extractables  
 Last Update : Sat Jul 15 05:26:27 2023  
 Integrator: ChemStation

RT#1	RT#2	Resolution
3.476	3.933	100.00%
3.933	4.267	100.00%
4.267	4.466	100.00%
4.466	4.712	100.00%
4.712	4.859	100.00%
4.859	5.201	100.00%
5.201	5.631	100.00%
5.631	5.888	100.00%
5.888	5.968	100.00%
5.968	6.017	93.32%
6.017	6.147	100.00%
6.147	6.294	100.00%
6.294	6.523	100.00%
6.523	6.665	100.00%
6.665	6.744	100.00%
6.744	6.874	100.00%
6.874	6.981	100.00%
6.981	7.110	100.00%
7.110	7.462	100.00%
7.462	7.594	100.00%
7.594	9.023	100.00%

## Signal #2

2.688	3.193	100.00%
3.193	3.524	100.00%
3.524	3.825	100.00%
3.825	3.865	93.82%
3.865	4.054	100.00%
4.054	4.145	100.00%
4.145	4.652	100.00%
4.652	4.905	100.00%
4.905	4.969	100.00%
4.969	5.022	100.00%
5.022	5.168	100.00%
5.168	5.289	100.00%
5.289	5.369	100.00%
5.369	5.565	100.00%
5.565	5.725	100.00%
5.725	5.861	100.00%
5.861	5.977	100.00%
5.977	6.044	100.00%
6.044	6.269	100.00%
6.269	6.562	100.00%
6.562	6.773	100.00%
6.773	7.871	100.00%

Data Path : Z:\pestpcbsrv\HPCHEM1\ECD\_L\Data\PL071523\  
 Data File : PL083924.D  
 Signal(s) : Signal #1: ECD1A.ch Signal #2: ECD2B.ch  
 Acq On : 15 Jul 2023 00:44  
 Operator : AR\AJ  
 Sample : RESC352  
 Misc :  
 ALS Vial : 2 Sample Multiplier: 1

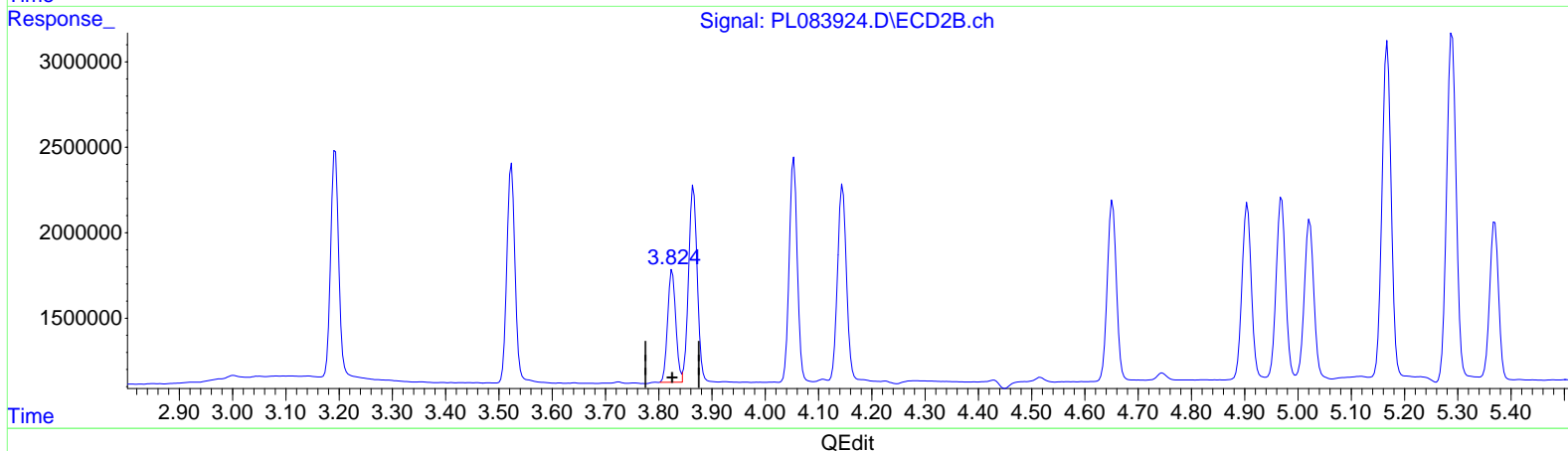
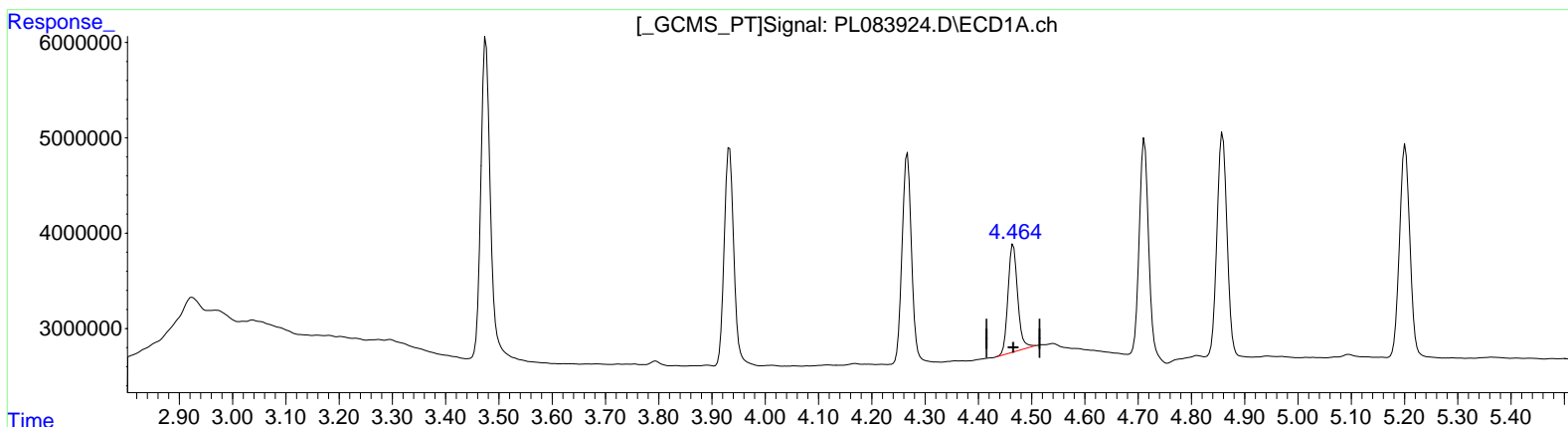
Instrument :  
 ECD\_L  
 ClientSampleId :  
 RESC211

Manual Integrations  
 APPROVED

Reviewed By :Abdul Mirza 07/21/2023  
 Supervised By :Ankita Jodhani 07/21/2023

Integration File signal 1: autoint1.e  
 Integration File signal 2: autoint2.e  
 Quant Time: Jul 15 05:27:42 2023  
 Quant Method : Z:\pestpcbsrv\HPCHEM1\ECD\_L\methods\PL071523CLP.M  
 Quant Title : GC Extractables  
 QLast Update : Sat Jul 15 05:26:27 2023  
 Response via : Initial Calibration  
 Integrator: ChemStation

Volume Inj. : 1 µl  
 Signal #1 Phase : ZB-MR2 Signal #2 Phase: ZB-MR1  
 Signal #1 Info : 30M x 0.32mm x0.2 Signal #2 Info : 30M x 0.32mm x 0.50µm



(6) beta-BHC (B)  
 4.466min 10.520 ng/ml  
 response 14096594

(6) beta-BHC #2 (B)  
 3.825min 10.318 ng/ml  
 response 6950929

Data Path : Z:\pestpcbsrv\HPCHEM1\ECD\_L\Data\PL071523\  
 Data File : PL083924.D  
 Signal(s) : Signal #1: ECD1A.ch Signal #2: ECD2B.ch  
 Acq On : 15 Jul 2023 00:44  
 Operator : AR\AJ  
 Sample : RESC352  
 Misc :  
 ALS Vial : 2 Sample Multiplier: 1

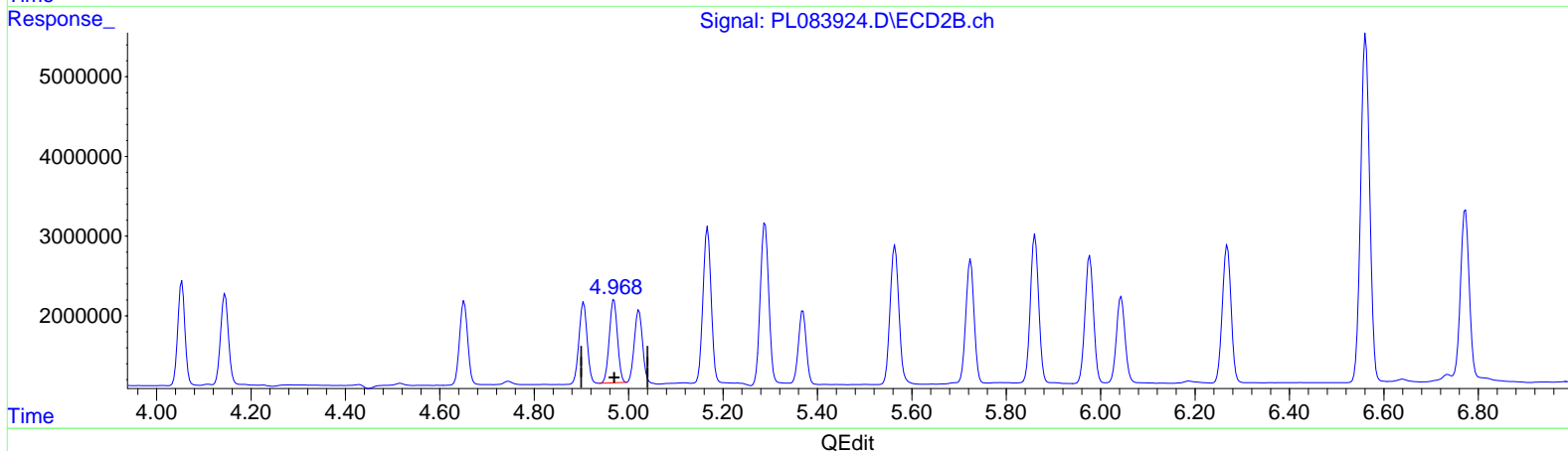
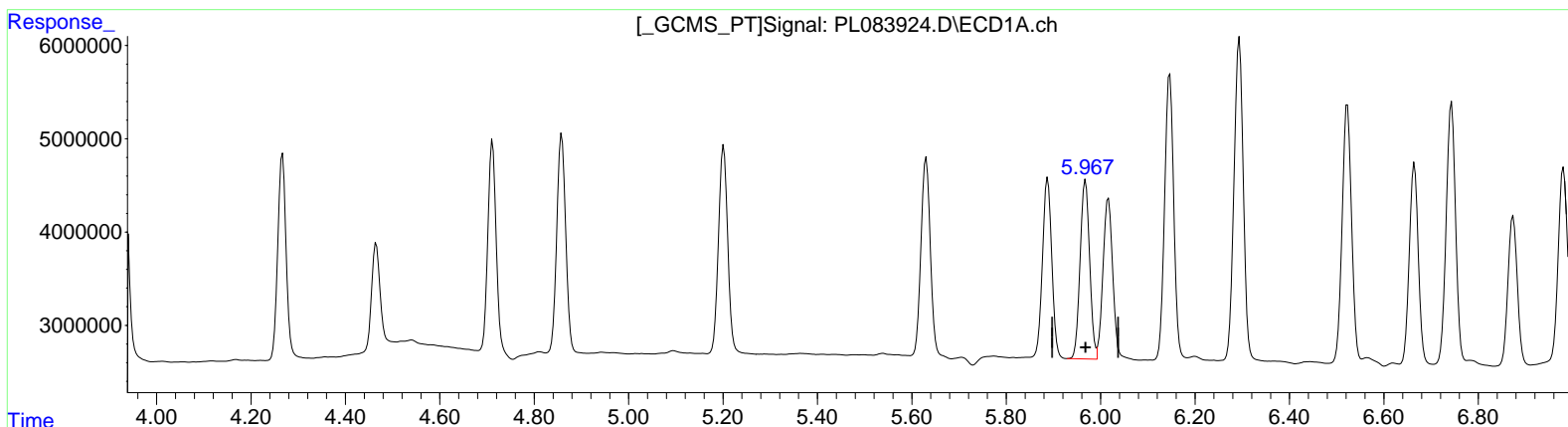
Instrument :  
 ECD\_L  
 ClientSampleId :  
 RESC211

Manual Integrations  
 APPROVED

Reviewed By :Abdul Mirza 07/21/2023  
 Supervised By :Ankita Jodhani 07/21/2023

Integration File signal 1: autoint1.e  
 Integration File signal 2: autoint2.e  
 Quant Time: Jul 15 05:27:42 2023  
 Quant Method : Z:\pestpcbsrv\HPCHEM1\ECD\_L\methods\PL071523CLP.M  
 Quant Title : GC Extractables  
 QLast Update : Sat Jul 15 05:26:27 2023  
 Response via : Initial Calibration  
 Integrator: ChemStation

Volume Inj. : 1 µl  
 Signal #1 Phase : ZB-MR2 Signal #2 Phase: ZB-MR1  
 Signal #1 Info : 30M x 0.32mm x0.2 Signal #2 Info : 30M x 0.32mm x 0.50µm



(11) cis-Chlordane (B)  
 5.968min 10.098 ng/ml  
 response 26811023

(11) cis-Chlordane #2 (B)  
 4.969min 9.815 ng/ml  
 response 12572655