

Data Path : Z:\pestpcbsrv\HPCHEM1\ECD_L\Data\PL071524\
 Data File : PL090521.D
 Signal(s) : Signal #1: ECD1A.ch Signal #2: ECD2B.ch
 Acq On : 15 Jul 2024 11:54
 Operator : AR\AJ
 Sample : PTOXICC1000
 Misc :
 ALS Vial : 15 Sample Multiplier: 1

Instrument :
 ECD_L
 ClientSampleId :
 PTOXICC1000

Integration File signal 1: autoint1.e
 Integration File signal 2: autoint2.e
 Quant Time: Jul 15 13:08:16 2024
 Quant Method : Z:\pestpcbsrv\HPCHEM1\ECD_L\methods\LTX071524.M
 Quant Title : GC Extractables
 QLast Update : Mon Jul 15 13:05:43 2024
 Response via : Initial Calibration
 Integrator: ChemStation

Volume Inj. : 2 µl
 Signal #1 Phase : Rtx-CLPesticide 1 Signal #2 Phase: Rtx-CLPesticide 1
 Signal #1 Info : 30M x 0.32mm x0.3 Signal #2 Info : 30M x 0.32mm x 0.25µm

Compound	RT#1	RT#2	Resp#1	Resp#2	ng/ml	ng/ml

System Monitoring Compounds						
1) SA Tetrachlo...	3.546	2.789	197.0E6	166.1E6	98.576	99.596
7) SA Decachlor...	9.058	7.931	122.7E6	139.1E6	97.939	98.088
Target Compounds						
2) Toxaphene-1	5.857	5.346	8712790	11062814	956.072	990.447
3) Toxaphene-2	6.446	5.704	11876585	11338601	962.293	983.485
4) Toxaphene-3	7.062	6.619	57121952	39081669	983.749	1023.553
5) Toxaphene-4	7.153	6.746	43038136	55465234	977.038	1005.339
6) Toxaphene-5	7.937	7.191	31273979	16566854	986.951	1039.954

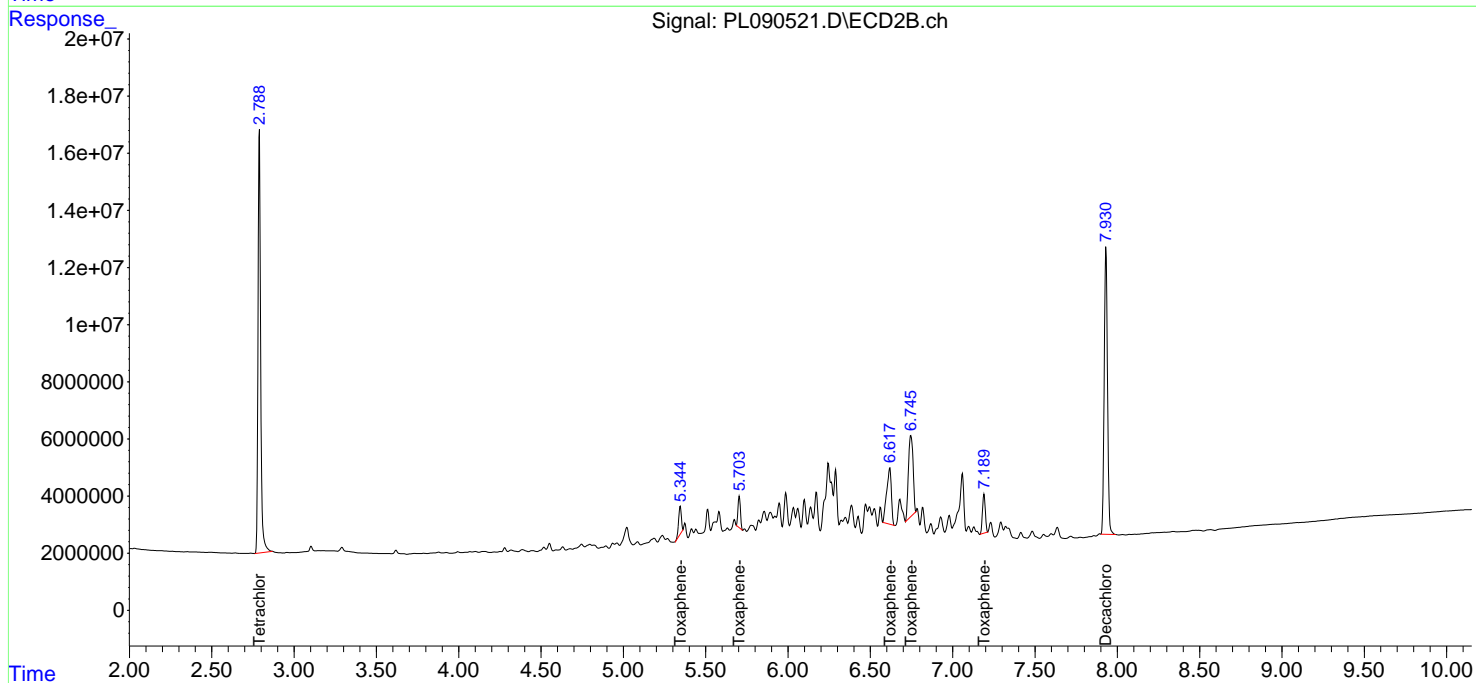
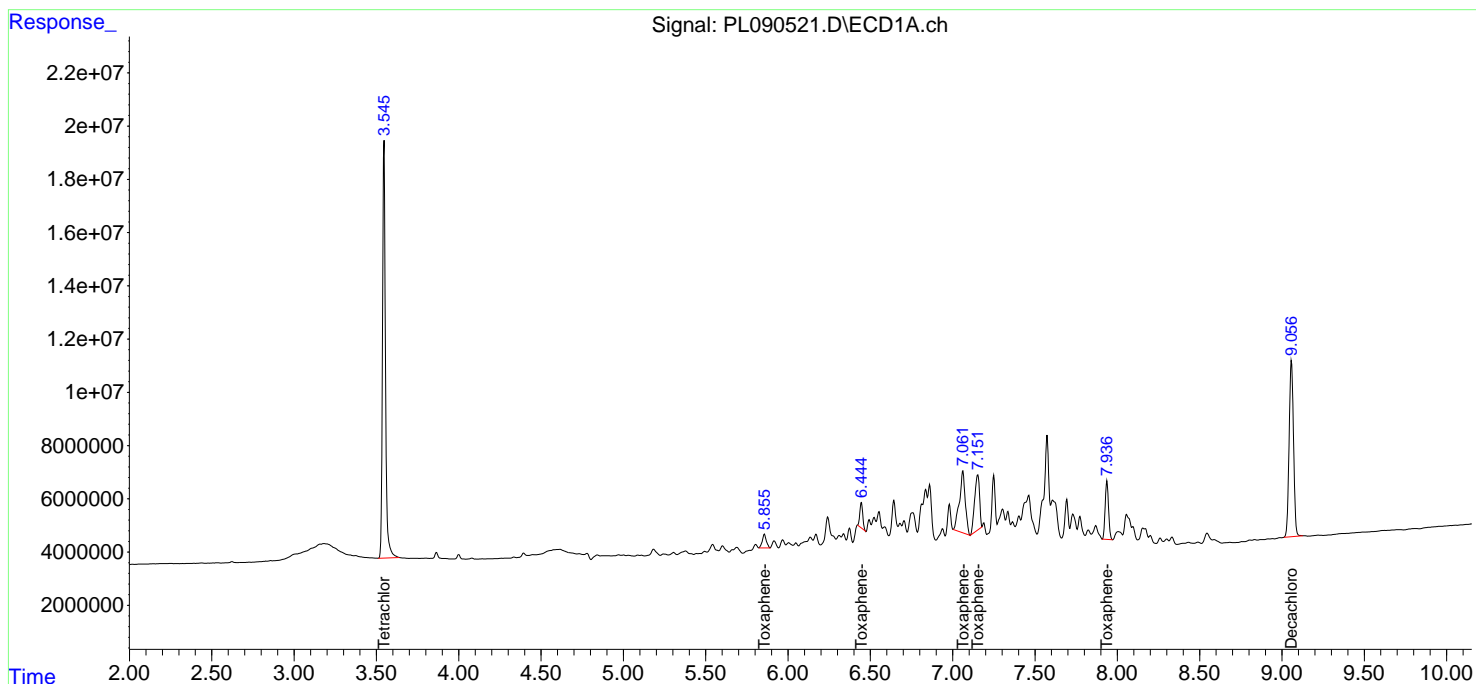
(f)=RT Delta > 1/2 Window (#)=Amounts differ by > 25% (m)=manual int.

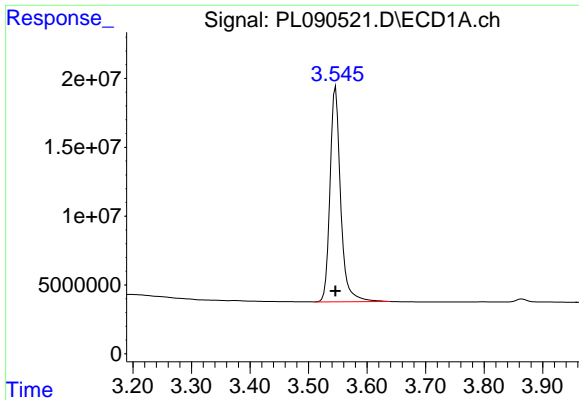
Data Path : Z:\pestpcbsrv\HPCHEM1\ECD_L\Data\PL071524\
 Data File : PL090521.D
 Signal(s) : Signal #1: ECD1A.ch Signal #2: ECD2B.ch
 Acq On : 15 Jul 2024 11:54
 Operator : AR\AJ
 Sample : PTOXICC1000
 Misc :
 ALS Vial : 15 Sample Multiplier: 1

Instrument :
 ECD_L
 ClientSampleId :
 PTOXICC1000

Integration File signal 1: autoint1.e
 Integration File signal 2: autoint2.e
 Quant Time: Jul 15 13:08:16 2024
 Quant Method : Z:\pestpcbsrv\HPCHEM1\ECD_L\methods\LTX071524.M
 Quant Title : GC Extractables
 QLast Update : Mon Jul 15 13:05:43 2024
 Response via : Initial Calibration
 Integrator: ChemStation

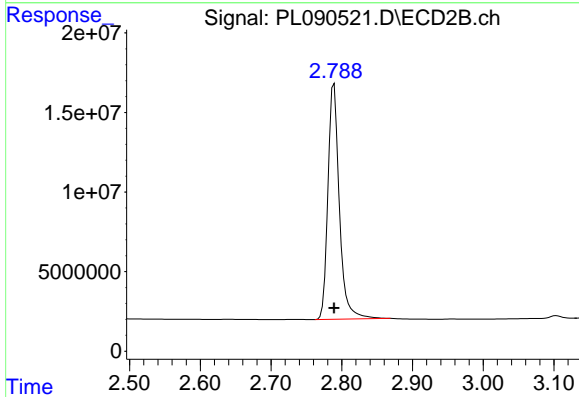
Volume Inj. : 2 µl
 Signal #1 Phase : Rtx-CLPesticide 1 Signal #2 Phase: Rtx-CLPesticide 1
 Signal #1 Info : 30M x 0.32mm x0.3 Signal #2 Info : 30M x 0.32mm x 0.25µm



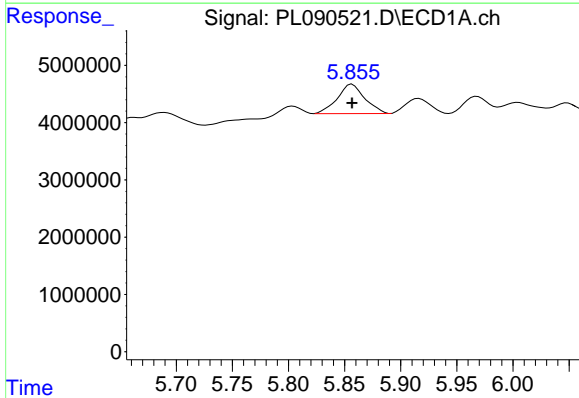


#1 Tetrachloro-m-xylene
 R.T.: 3.546 min
 Delta R.T.: 0.000 min
 Response: 197028618
 Conc: 98.58 ng/ml

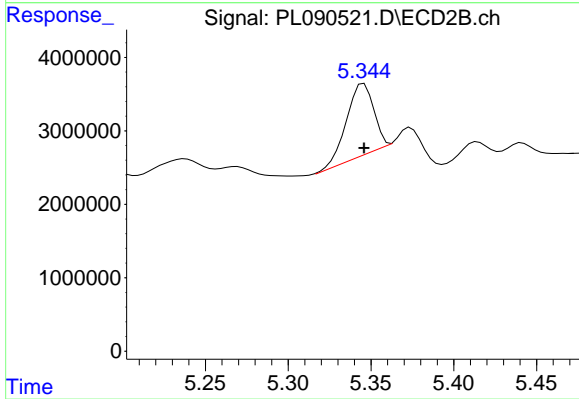
Instrument :
 ECD_L
 ClientSampleId :
 PTOXICC1000



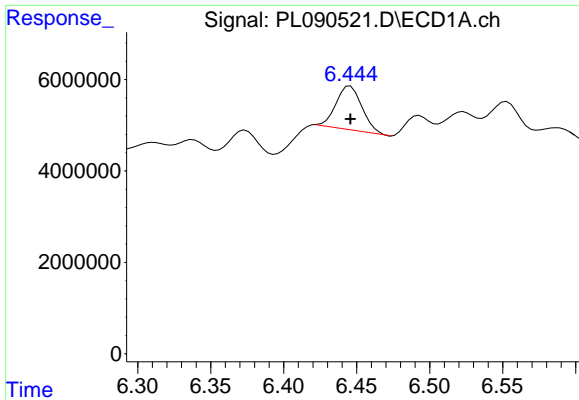
#1 Tetrachloro-m-xylene
 R.T.: 2.789 min
 Delta R.T.: 0.000 min
 Response: 166142335
 Conc: 99.60 ng/ml



#2 Toxaphene-1
 R.T.: 5.857 min
 Delta R.T.: 0.000 min
 Response: 8712790
 Conc: 956.07 ng/ml



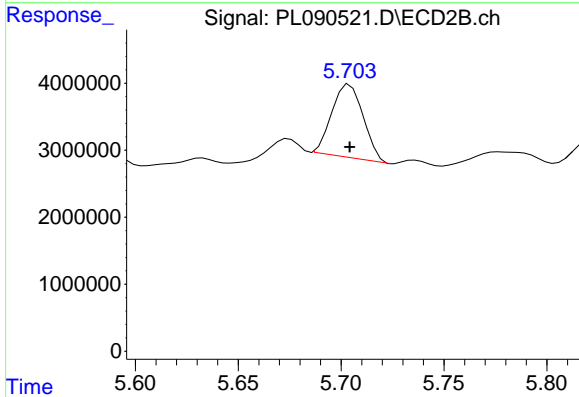
#2 Toxaphene-1
 R.T.: 5.346 min
 Delta R.T.: 0.000 min
 Response: 11062814
 Conc: 990.45 ng/ml



#3 Toxaphene-2

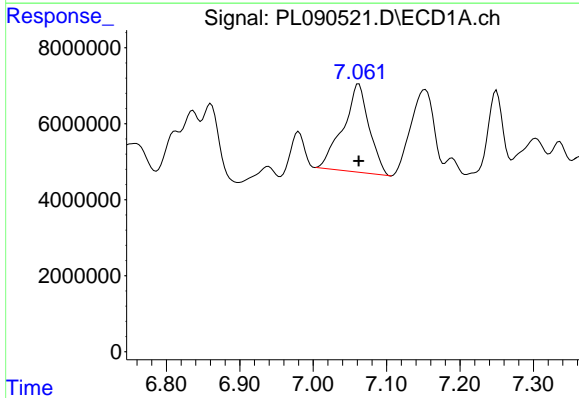
R.T.: 6.446 min
 Delta R.T.: 0.000 min
 Response: 11876585
 Conc: 962.29 ng/ml

Instrument :
 ECD_L
 ClientSampleId :
 PTOXICC1000



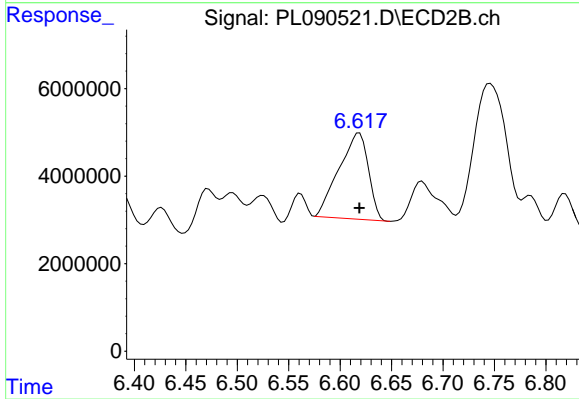
#3 Toxaphene-2

R.T.: 5.704 min
 Delta R.T.: 0.000 min
 Response: 11338601
 Conc: 983.48 ng/ml



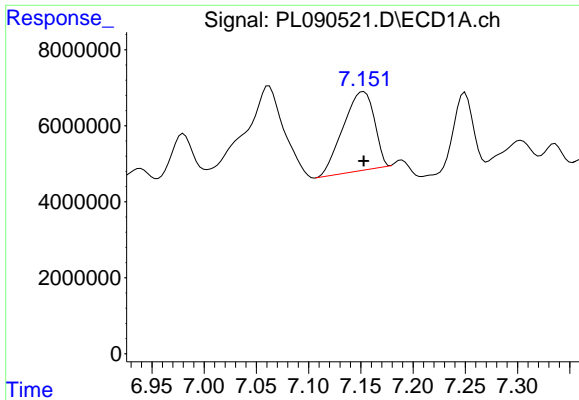
#4 Toxaphene-3

R.T.: 7.062 min
 Delta R.T.: 0.000 min
 Response: 57121952
 Conc: 983.75 ng/ml



#4 Toxaphene-3

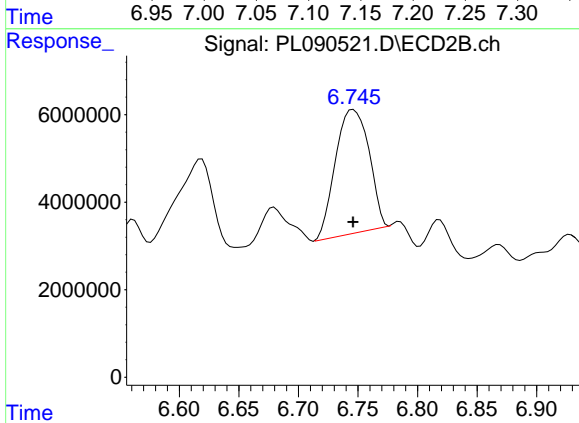
R.T.: 6.619 min
 Delta R.T.: 0.000 min
 Response: 39081669
 Conc: 1023.55 ng/ml



#5 Toxaphene-4

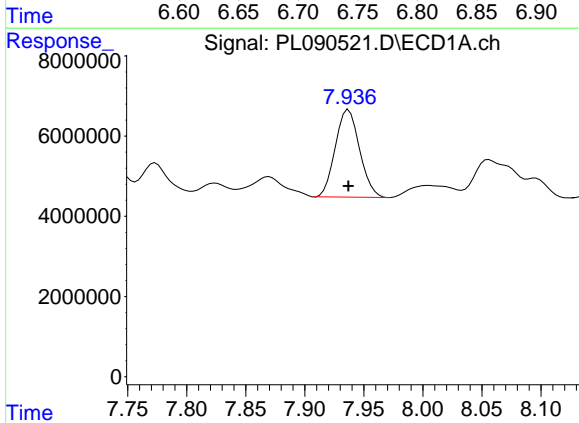
R.T.: 7.153 min
 Delta R.T.: 0.000 min
 Response: 43038136
 Conc: 977.04 ng/ml

Instrument :
 ECD_L
 ClientSampleId :
 PTOXICC1000



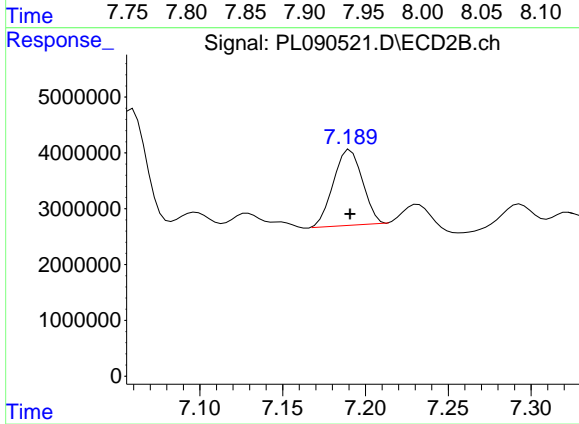
#5 Toxaphene-4

R.T.: 6.746 min
 Delta R.T.: 0.000 min
 Response: 55465234
 Conc: 1005.34 ng/ml



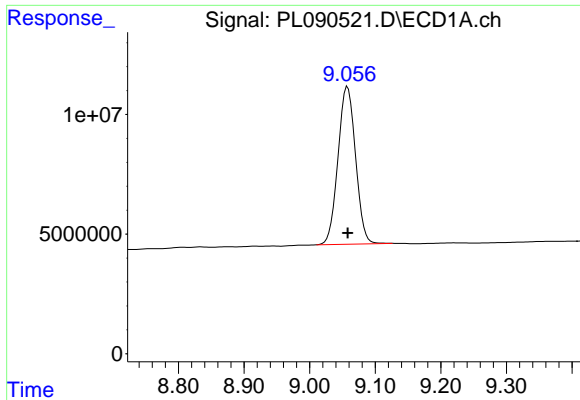
#6 Toxaphene-5

R.T.: 7.937 min
 Delta R.T.: 0.000 min
 Response: 31273979
 Conc: 986.95 ng/ml



#6 Toxaphene-5

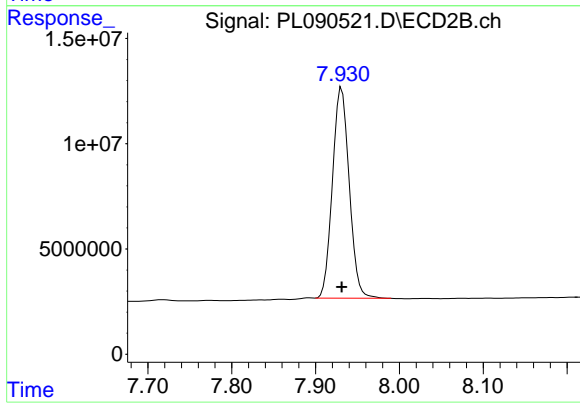
R.T.: 7.191 min
 Delta R.T.: 0.000 min
 Response: 16566854
 Conc: 1039.95 ng/ml



#7 Decachlorobiphenyl

R.T.: 9.058 min
Delta R.T.: 0.000 min
Response: 122652808
Conc: 97.94 ng/ml

Instrument :
ECD_L
ClientSampleId :
PTOXICC1000



#7 Decachlorobiphenyl

R.T.: 7.931 min
Delta R.T.: 0.000 min
Response: 139106900
Conc: 98.09 ng/ml