

Data Path : Z:\pestpcbsrv\HPCHEM1\ECD_L\Data\PL071619\
 Data File : PL050453.D
 Signal(s) : Signal #1: ECD1A.ch Signal #2: ECD2B.ch
 Acq On : 17 Jul 2019 05:31
 Operator : SM\AJ
 Sample : PB121400BL
 Misc :
 ALS Vial : 65 Sample Multiplier: 1

Instrument :
 ECD_L
 ClientSampleId :
 PB121400BL

Integration File signal 1: autoint1.e
 Integration File signal 2: autoint2.e
 Quant Time: Jul 17 06:49:33 2019
 Quant Method : Z:\pestpcbsrv\HPCHEM1\ECD_L\methods\PL062019.M
 Quant Title : GC Extractables
 QLast Update : Fri Jun 21 02:23:20 2019
 Response via : Initial Calibration
 Integrator: ChemStation

Volume Inj. : 1 µl
 Signal #1 Phase : ZB-MR2 Signal #2 Phase: ZB-MR1
 Signal #1 Info : 30M x 0.32mm x0.2 Signal #2 Info : 30M x 0.32mm x0.5µm

Compound	RT#1	RT#2	Resp#1	Resp#2	ng/ml	ng/ml

System Monitoring Compounds						
1) SA Tetrachlo...	3.320	3.931	218.9E6	63128742	19.411	20.618
28) SA Decachlor...	7.982	8.962	219.1E6	64552619	17.241	19.229

Target Compounds

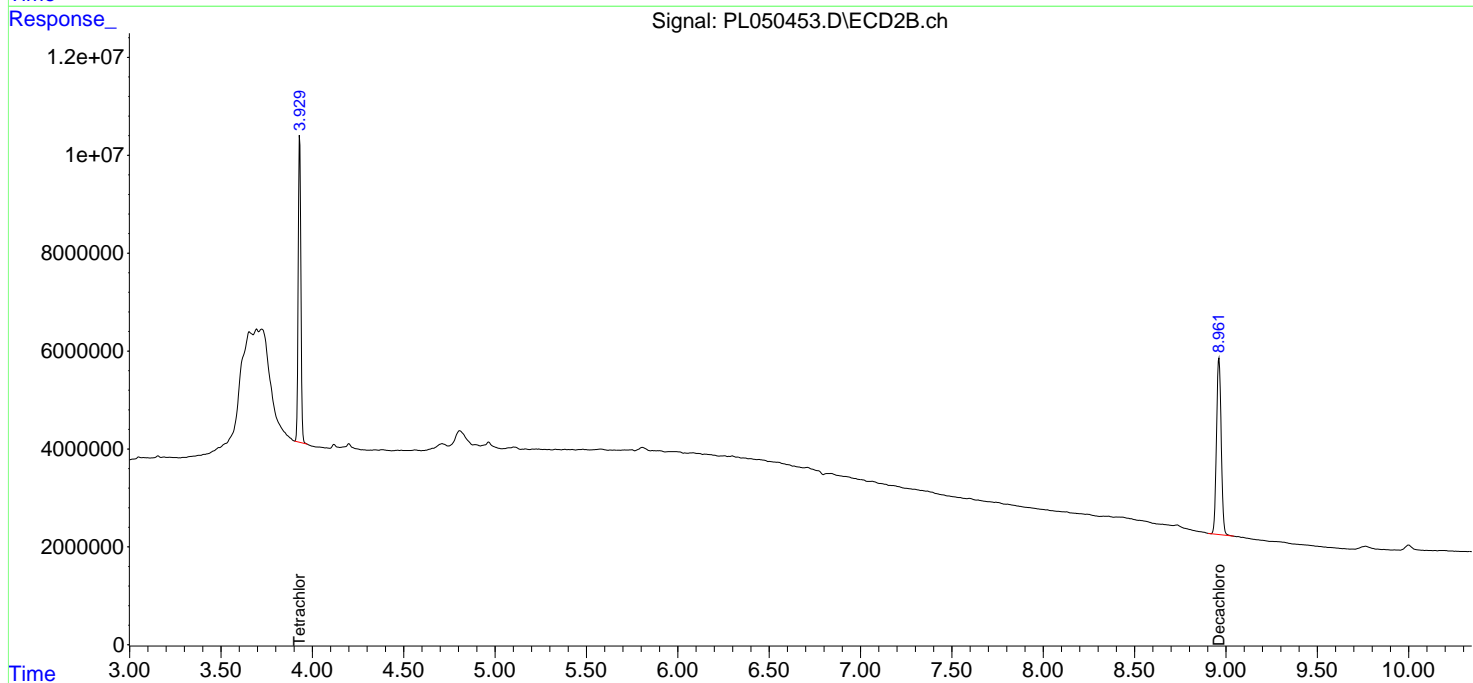
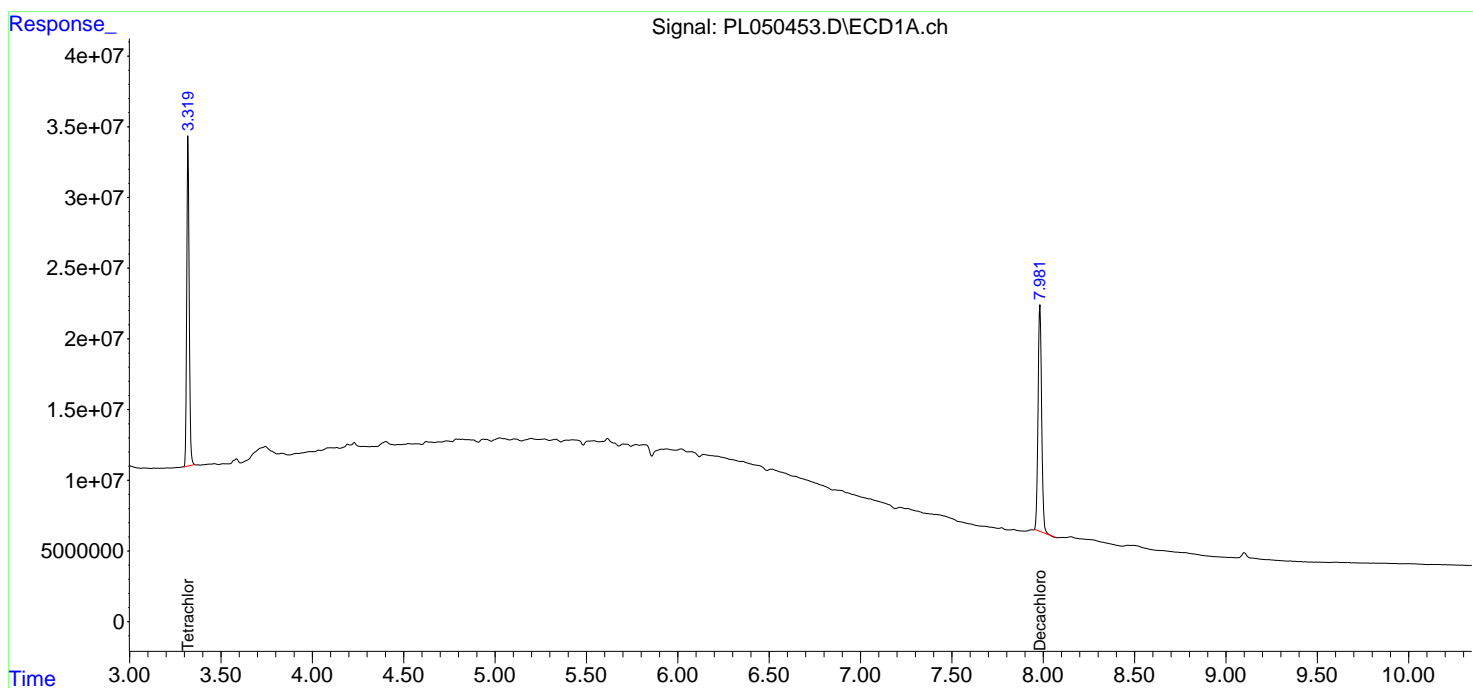
(f)=RT Delta > 1/2 Window (#)=Amounts differ by > 25% (m)=manual int.

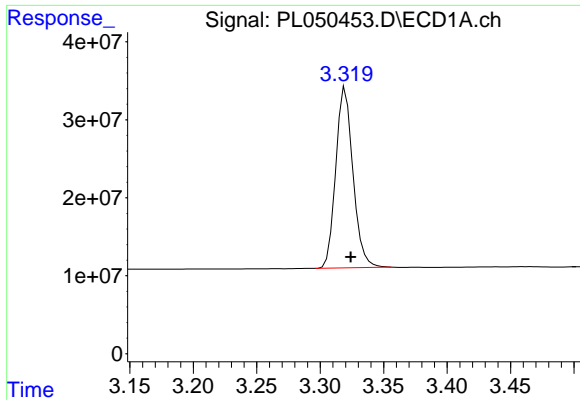
Data Path : Z:\pestpcbsrv\HPCHEM1\ECD_L\Data\PL071619\
 Data File : PL050453.D
 Signal(s) : Signal #1: ECD1A.ch Signal #2: ECD2B.ch
 Acq On : 17 Jul 2019 05:31
 Operator : SM\AJ
 Sample : PB121400BL
 Misc :
 ALS Vial : 65 Sample Multiplier: 1

Instrument :
 ECD_L
 ClientSampleId :
 PB121400BL

Integration File signal 1: autoint1.e
 Integration File signal 2: autoint2.e
 Quant Time: Jul 17 06:49:33 2019
 Quant Method : Z:\pestpcbsrv\HPCHEM1\ECD_L\methods\PL062019.M
 Quant Title : GC Extractables
 QLast Update : Fri Jun 21 02:23:20 2019
 Response via : Initial Calibration
 Integrator: ChemStation

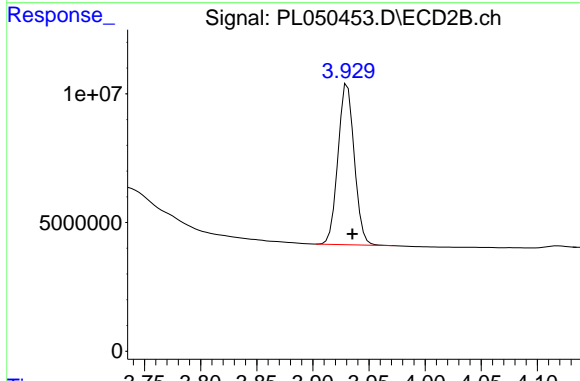
Volume Inj. : 1 µl
 Signal #1 Phase : ZB-MR2 Signal #2 Phase: ZB-MR1
 Signal #1 Info : 30M x 0.32mm x0.2 Signal #2 Info : 30M x 0.32mm x0.5µm



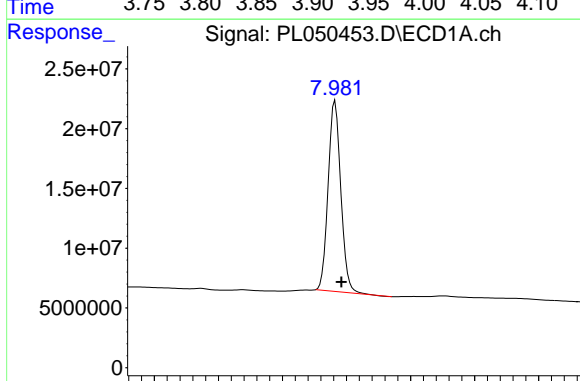


#1 Tetrachloro-m-xylene
 R.T.: 3.320 min
 Delta R.T.: -0.004 min
 Response: 218909764
 Conc: 19.41 ng/ml

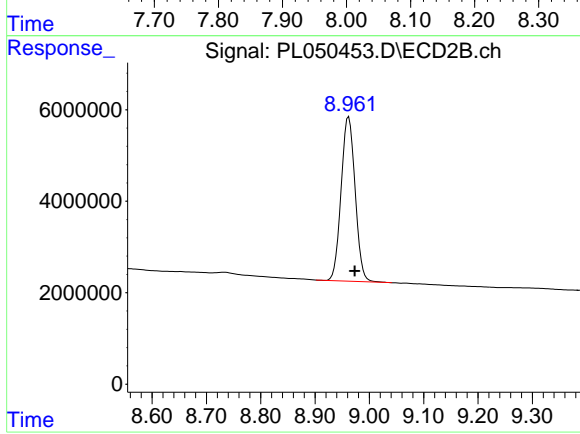
Instrument :
 ECD_L
 ClientSampled :
 PB121400BL



#1 Tetrachloro-m-xylene
 R.T.: 3.931 min
 Delta R.T.: -0.004 min
 Response: 63128742
 Conc: 20.62 ng/ml



#28 Decachlorobiphenyl
 R.T.: 7.982 min
 Delta R.T.: -0.010 min
 Response: 219072868
 Conc: 17.24 ng/ml



#28 Decachlorobiphenyl
 R.T.: 8.962 min
 Delta R.T.: -0.011 min
 Response: 64552619
 Conc: 19.23 ng/ml