

Data Path : Z:\pestpcbsrv\HPCHEM1\ECD_L\Data\PL071619\
 Data File : PL050408.D
 Signal(s) : Signal #1: ECD1A.ch Signal #2: ECD2B.ch
 Acq On : 16 Jul 2019 17:27
 Operator : SM\AJ
 Sample : PB121424BL
 Misc :
 ALS Vial : 28 Sample Multiplier: 1

Instrument :
 ECD_L
 ClientSampleId :
 PB121424BL

Integration File signal 1: autoint1.e
 Integration File signal 2: autoint2.e
 Quant Time: Jul 17 01:11:17 2019
 Quant Method : Z:\pestpcbsrv\HPCHEM1\ECD_L\methods\PL062019.M
 Quant Title : GC Extractables
 QLast Update : Fri Jun 21 02:23:20 2019
 Response via : Initial Calibration
 Integrator: ChemStation

Volume Inj. : 1 µl
 Signal #1 Phase : ZB-MR2 Signal #2 Phase: ZB-MR1
 Signal #1 Info : 30M x 0.32mm x0.2 Signal #2 Info : 30M x 0.32mm x0.5µm

Compound	RT#1	RT#2	Resp#1	Resp#2	ng/ml	ng/ml

System Monitoring Compounds						
1) SA Tetrachlo...	3.319	3.931	197.0E6	58119722	17.468	18.982
28) SA Decachlor...	7.981	8.961	182.9E6	56683653	14.396	16.885

Target Compounds

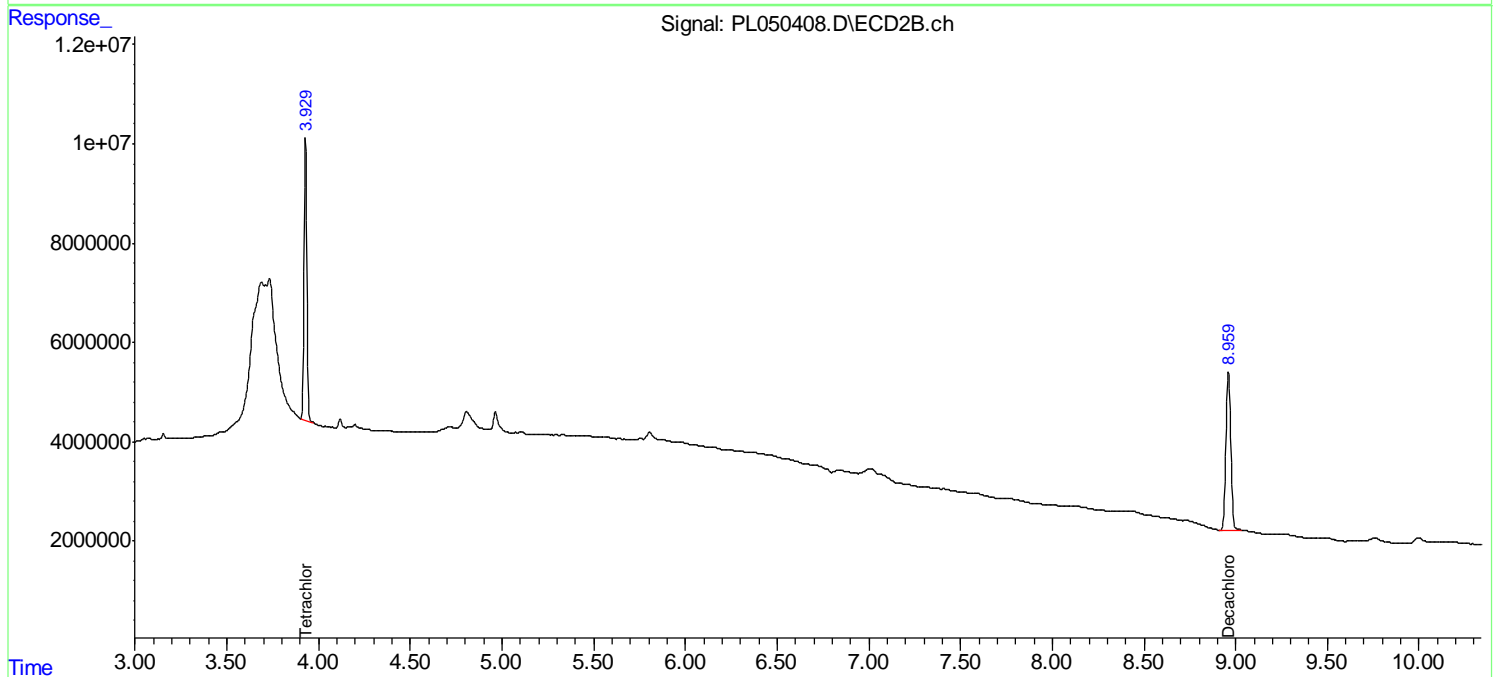
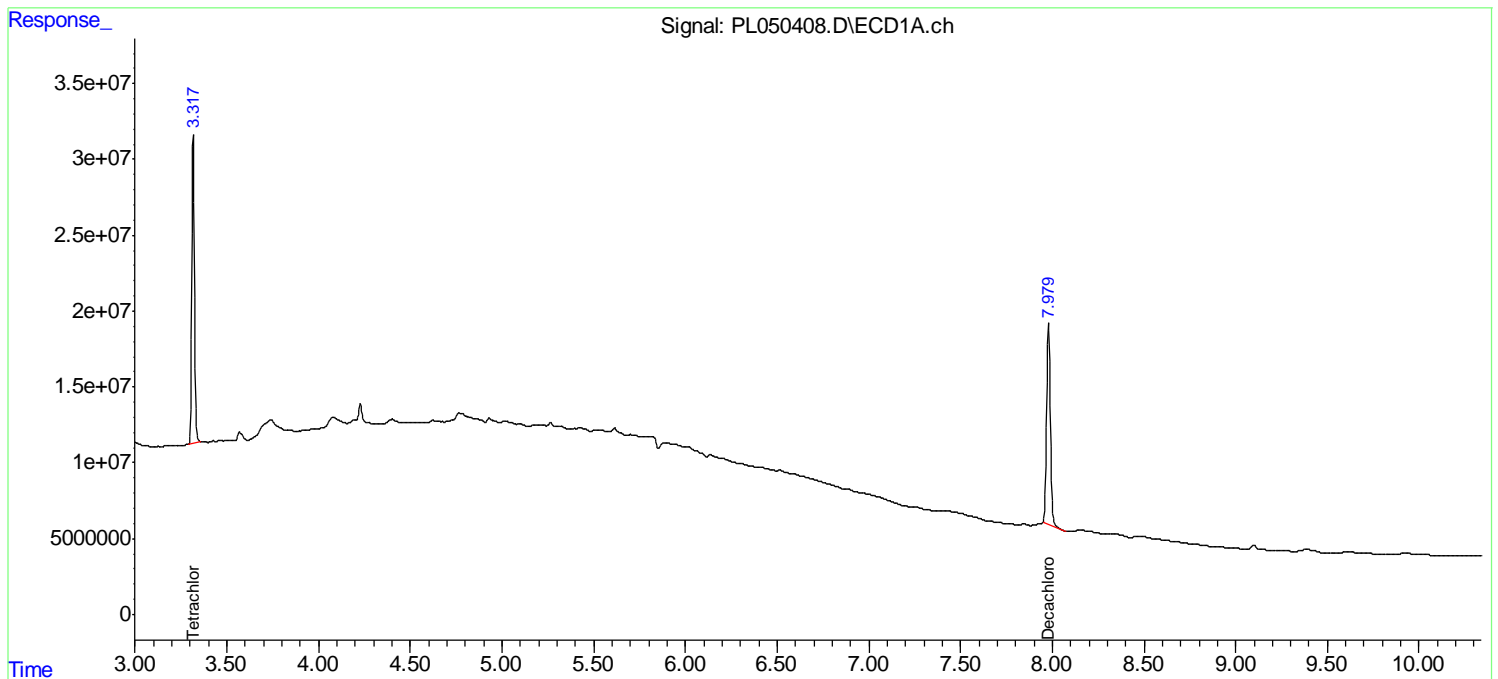
(f)=RT Delta > 1/2 Window (#)=Amounts differ by > 25% (m)=manual int.

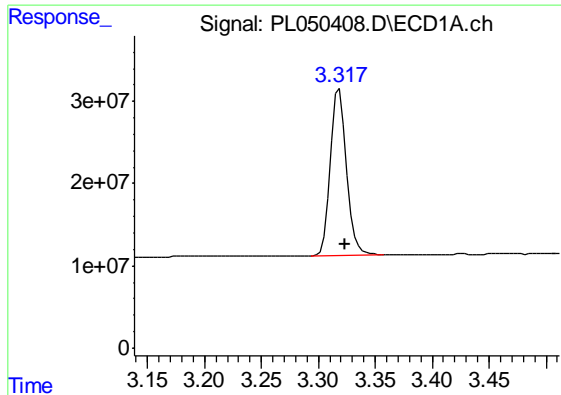
Data Path : Z:\pestpcbsrv\HPCHEM1\ECD_L\Data\PL071619\
 Data File : PL050408.D
 Signal(s) : Signal #1: ECD1A.ch Signal #2: ECD2B.ch
 Acq On : 16 Jul 2019 17:27
 Operator : SM\AJ
 Sample : PB121424BL
 Misc :
 ALS Vial : 28 Sample Multiplier: 1

Instrument :
 ECD_L
 ClientSampleId :
 PB121424BL

Integration File signal 1: autoint1.e
 Integration File signal 2: autoint2.e
 Quant Time: Jul 17 01:11:17 2019
 Quant Method : Z:\pestpcbsrv\HPCHEM1\ECD_L\methods\PL062019.M
 Quant Title : GC Extractables
 QLast Update : Fri Jun 21 02:23:20 2019
 Response via : Initial Calibration
 Integrator: ChemStation

Volume Inj. : 1 µl
 Signal #1 Phase : ZB-MR2 Signal #2 Phase: ZB-MR1
 Signal #1 Info : 30M x 0.32mm x0.2 Signal #2 Info : 30M x 0.32mm x0.5µm

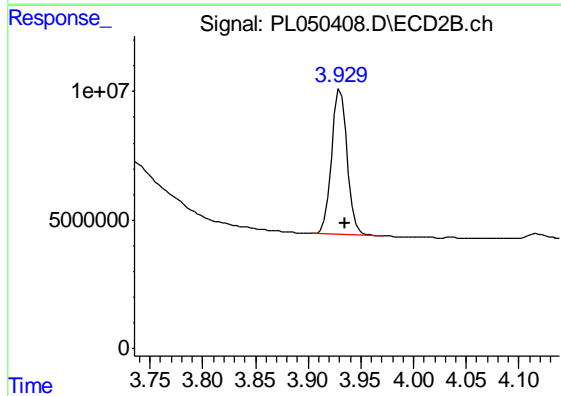




#1 Tetrachloro-m-xylene

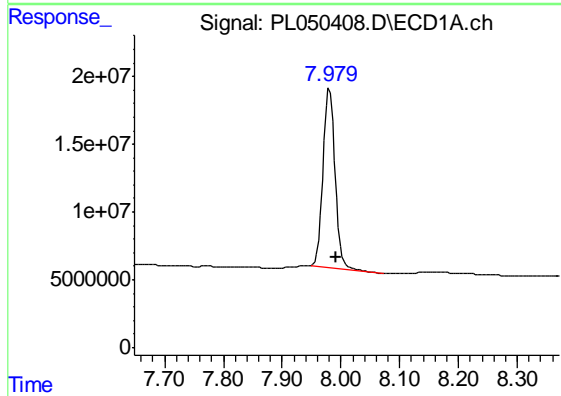
R.T.: 3.319 min
Delta R.T.: -0.005 min
Response: 196997418
Conc: 17.47 ng/ml

Instrument :
ECD_L
ClientSampleId :
PB121424BL



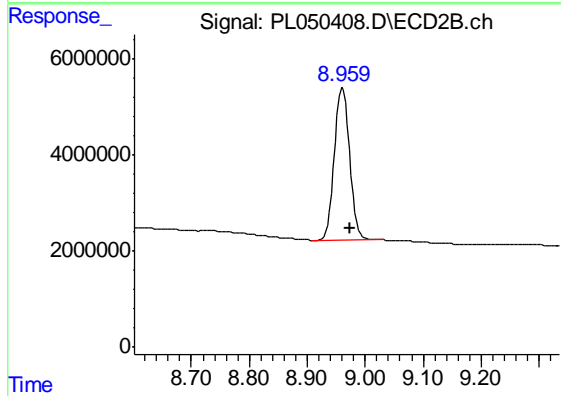
#1 Tetrachloro-m-xylene

R.T.: 3.931 min
Delta R.T.: -0.004 min
Response: 58119722
Conc: 18.98 ng/ml



#28 Decachlorobiphenyl

R.T.: 7.981 min
Delta R.T.: -0.011 min
Response: 182915658
Conc: 14.40 ng/ml



#28 Decachlorobiphenyl

R.T.: 8.961 min
Delta R.T.: -0.012 min
Response: 56683653
Conc: 16.88 ng/ml